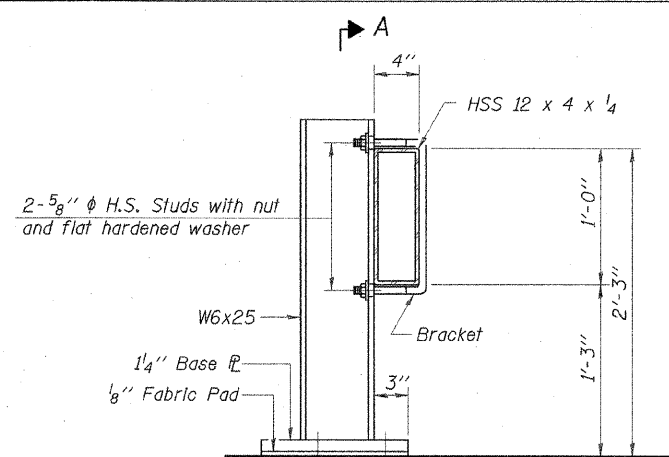
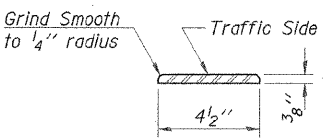


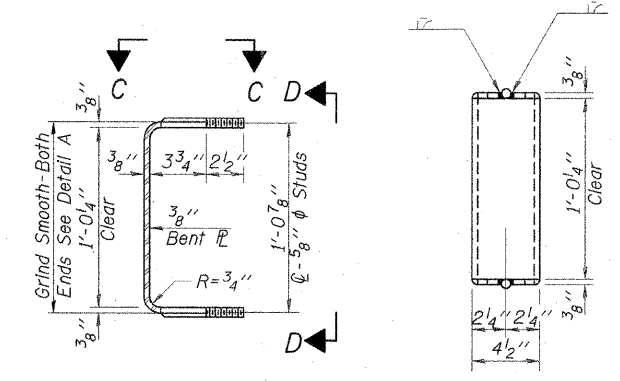
SECTION A-A



SECTION AT RAIL POST

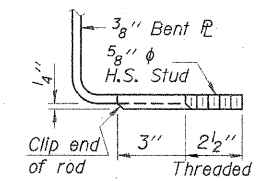


DETAIL A



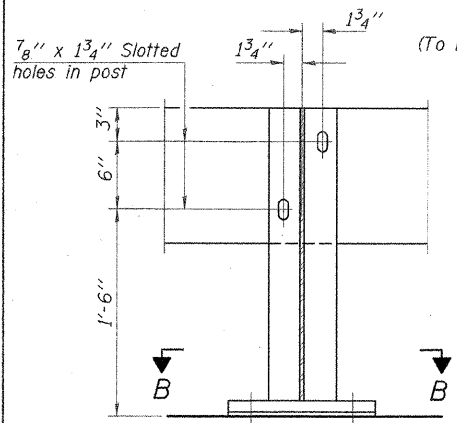
SECTION THRU BRACKET

VIEW D-D

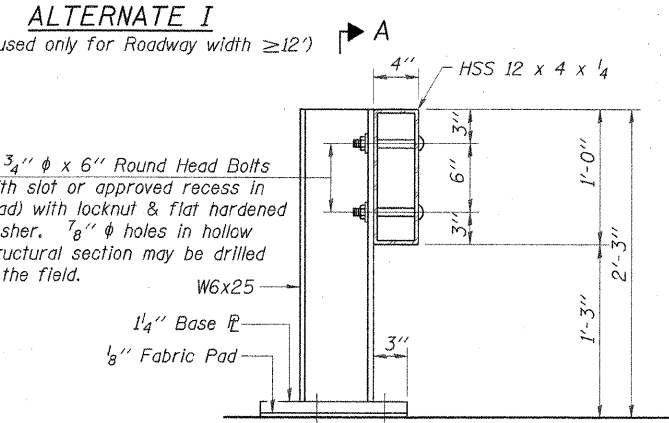


VIEW E-E

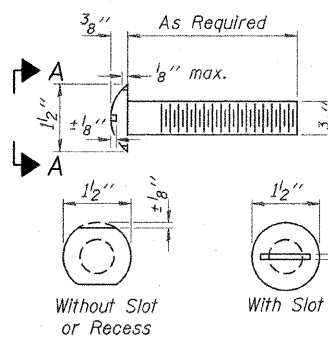
Notes:
 See Rail Post spacing detail this sheet.
 The contact surfaces between post flange, rail and inside face of bracket for Alternate I shall be free of all lubricants.
 The nut for 5/8 inch diameter high strength studs used in Alternate I to connect bracket to post shall be tightened to a snug fit and given an additional one half turn.



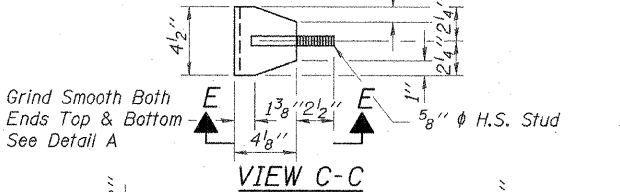
SECTION A-A



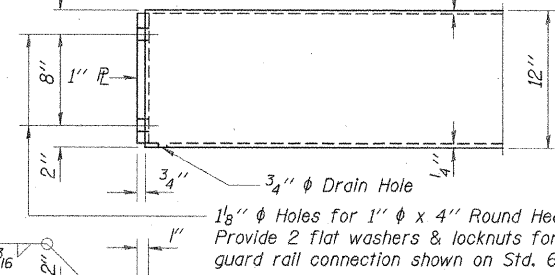
SECTION AT RAIL POST



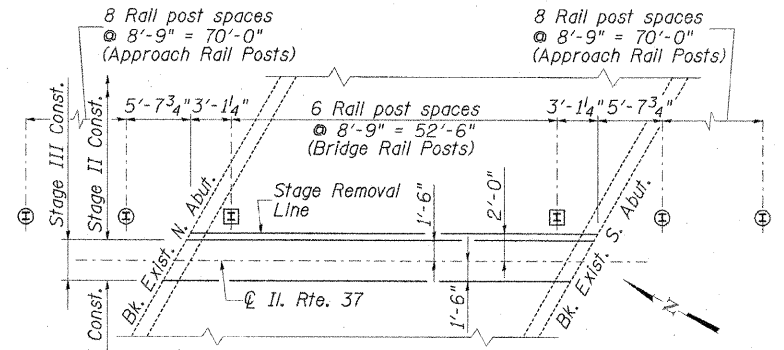
VIEW A-A ROUND HEAD BOLT



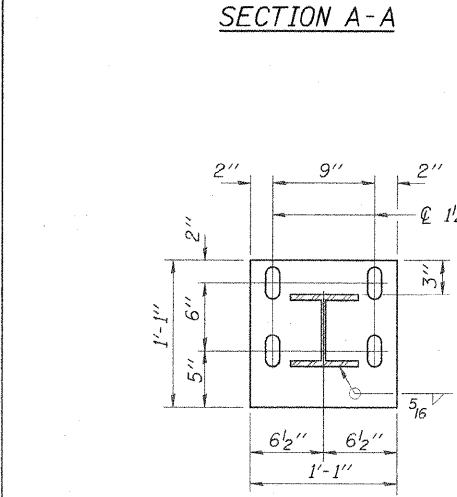
VIEW C-C



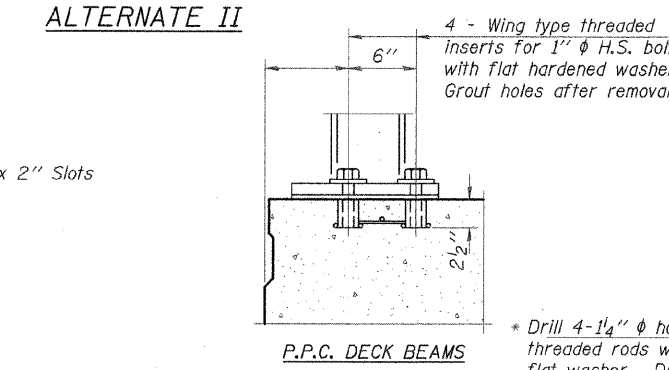
END OF RAIL DETAILS



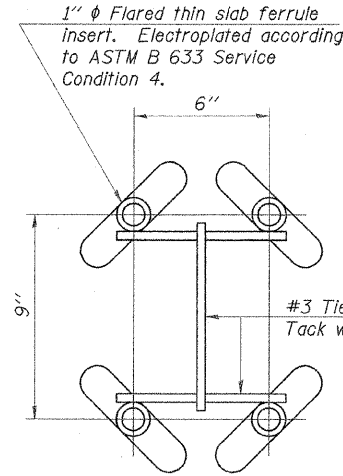
TEMPORARY BRIDGE RAIL POST SPACING PLAN



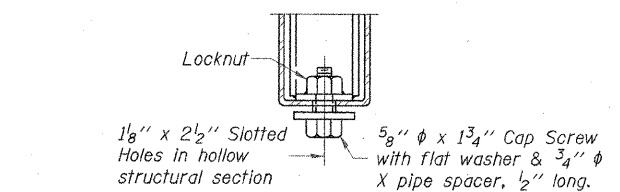
SECTION B-B



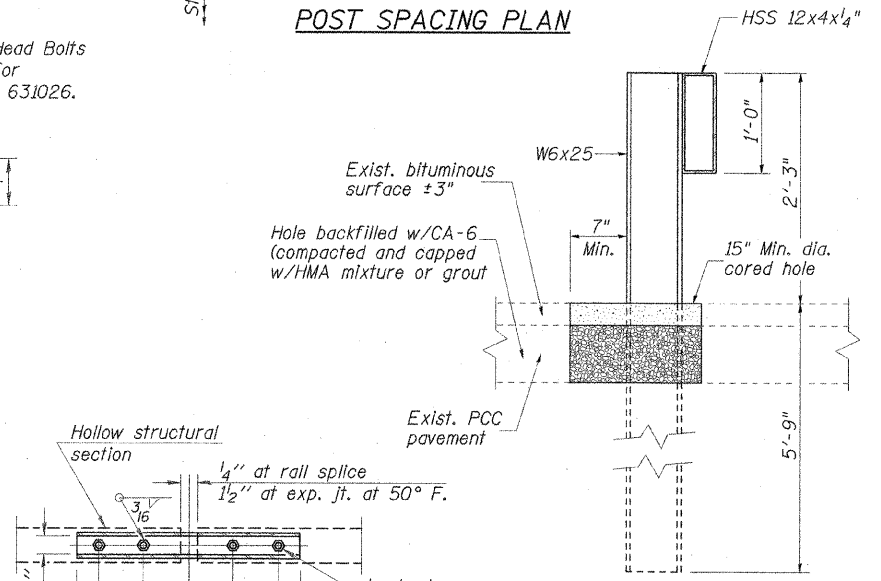
ALTERNATE II



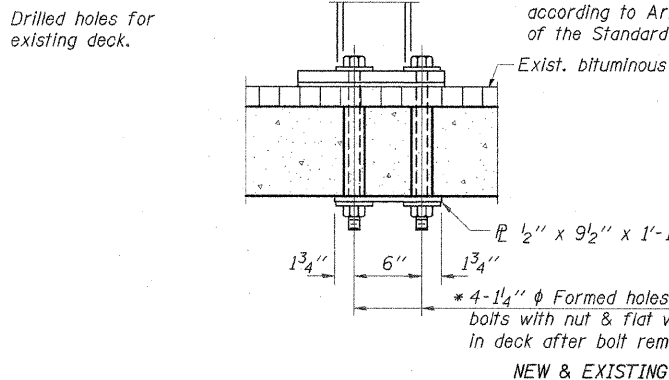
INSERT DETAIL



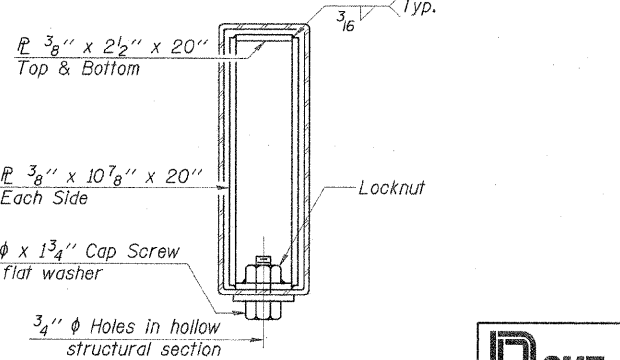
RAIL SPLICE CONNECTION AT EXPANSION JT.



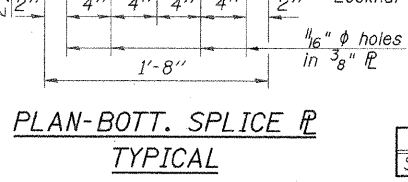
SECTION AT RAIL POST (On Existing Bridge Approaches)



ANCHORAGE DETAILS



SECTION AT RAIL SPLICE



PLAN-BOTT. SPLICE TYPICAL

BILL OF MATERIAL

Item	Unit	Quantity
Steel Railing (Temporary)	Foot	214

REVISIONS

NAME	DATE

ILLINOIS DEPARTMENT OF TRANSPORTATION
 TEMPORARY BRIDGE RAIL DETAILS
 F.A.P. ROUTE 726 (IL. RTE. 37)
 ILLINOIS ROUTE 37 OVER
 LITTLE SALINE CREEK
 SECTION 113B-2 STA. 531+81.00
 STR. NO. 100-0091 - WILLIAMSON COUNTY
 SCALE: NONE DRAWN BY: GLD
 DATE: 12/14/07 CHECKED BY: WLB

CMT
 CRAWFORD MURPHY & TILLY, INC.
 CONSULTING ENGINEERS
 SPRINGFIELD, IL ALPORA, IL ST. LOUIS, MO
 ROCKFORD, IL PEGATA, IL CHICAGO, IL

I:\DOT\060660\CA-1000091\Drawings\Sheets\TEMP BRIDGE RAIL - R-25.dgn
 12/17/2007