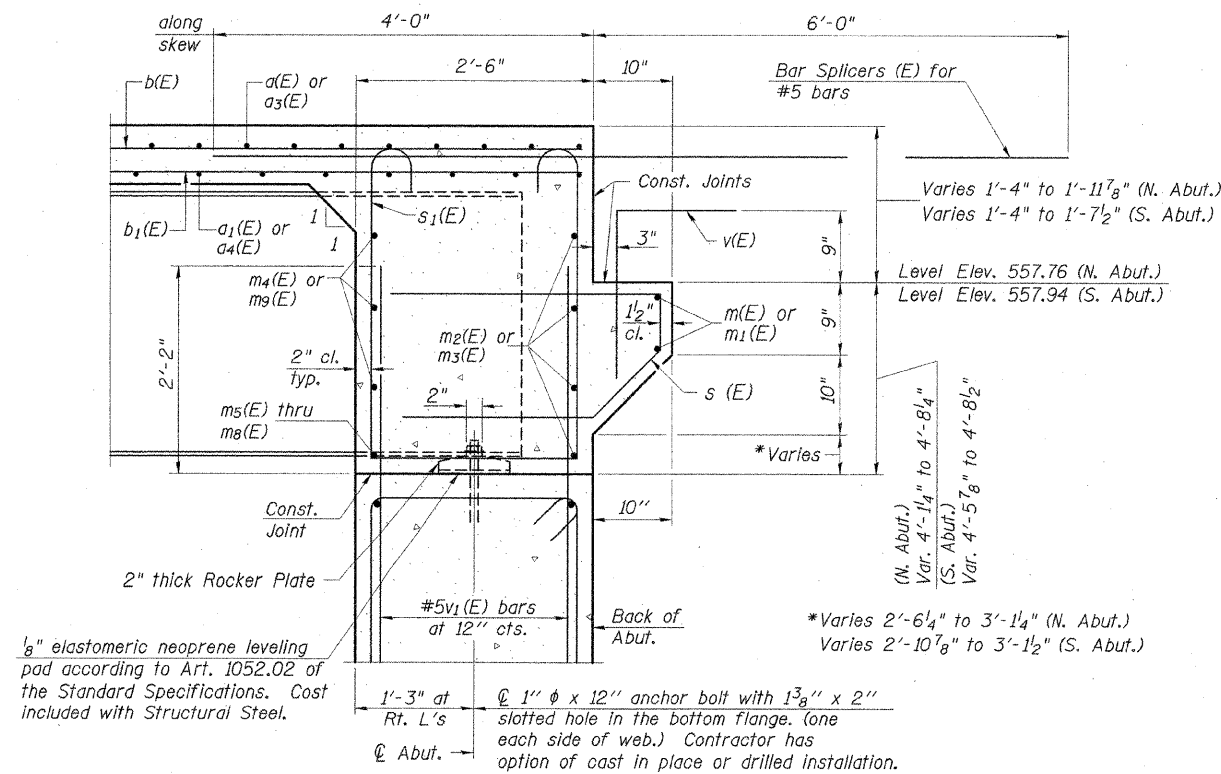


DIAPHRAGM ELEVATION AT ABUTMENT
(Looking South at South Abut., North Abut. similar)



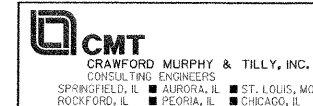
MIN. BAR LAP
#6 bar = 2'-9"

NOTES:

1. Reinforcement bars in diaphragm are billed with superstructure on Sheet 10 of 18.
2. Concrete in diaphragm is included with Concrete Superstructure on Sheet 10 of 18.
3. For details of bars s(E) & s1(E) see Sheet 10 of 18.
4. The s(E) and s1(E) bars shall be placed parallel to the beams. Spacing for these bars shall be at right angles to the beams.
5. For location of holes in web see Sheet 12 of 18.
6. For bar splicer details see Sheet 16 of 18.

REVISIONS	
NAME	DATE

ILLINOIS DEPARTMENT OF TRANSPORTATION
ABUTMENT DIAPHRAGM DETAILS
F.A.P. ROUTE 726 (IL. RTE. 37)
ILLINOIS ROUTE 37 OVER
LITTLE SALINE CREEK
SECTION 113B-2 STA. 531+81.00
STR. NO. 100-0091 - WILLIAMSON COUNTY
SCALE: NONE DRAWN BY: GLD
DATE: 12/14/07 CHECKED BY: WLB



SECTION A-A
Dimensions at right angles to abutment, except as shown.

L:\DOT\060666\SN\1000091\Drawings\sheets\ABUTMENT DETAIL 5.dgn 12/25/2007