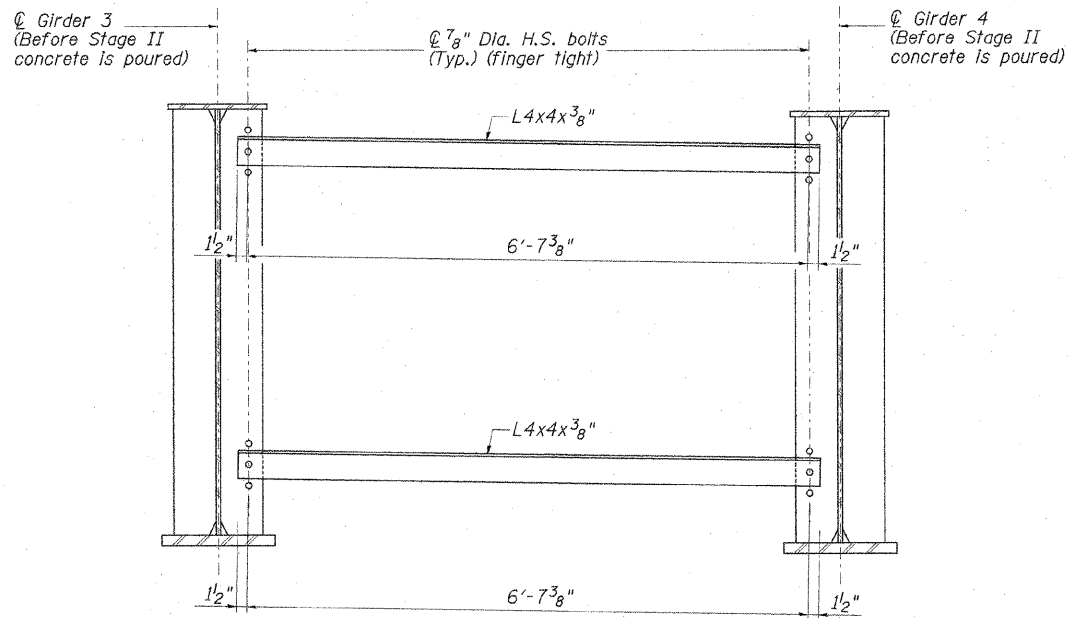


DETAIL "A"

TEMPORARY BRACING FOR STAGE I CONSTRUCTION

(No. Required = 6)

*The dimensions "A", "B", and "C" between the holes in the cross frame connection plate and the L4x4x3/8 shall be measured in the field. The holes in the brace shall be field drilled at dimensions "C". Included in the cost of "Furnishing and Erecting Structural Steel."



DETAIL "A"

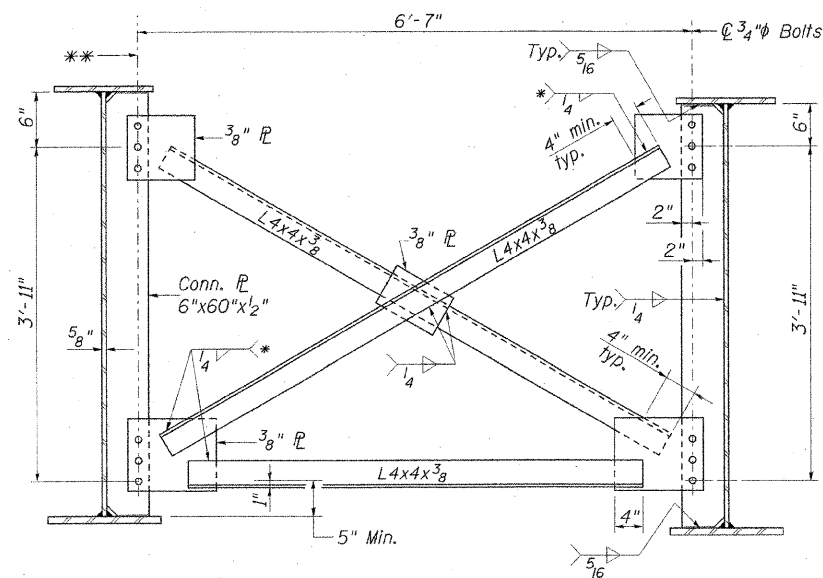
TEMPORARY BRACING FOR STAGE II CONSTRUCTION

(No. Required = 6)

Note: All steel for flanges, webs, cross frames, connection plates, and bearings shall be AASHTO M270 Grade 50W.

NOTES:

1. Remove Temporary Bracing for Stage II Construction and install typical interior cross frames between girders 3 and 4. Allow at least 72 hours to elapse following the Stage II deck pour prior to removing temporary braces.
2. All materials and installation and removal of temporary braces shall be included in "Furnishing and Erecting Structural Steel."



TYPICAL INTERIOR CROSS FRAME

(30 Required)

All cross frames or diaphragms shall be installed as steel is erected and secured with erection pins and bolts except as otherwise noted. Individual cross frames or diaphragms at supports may be temporarily disconnected to install bearing anchor rods.

* Fillet weld angles along 3 sides on one face of gusset plate.

** Use 1/2" vertical x 1 1/8" slotted holes in connection plates at South side of Beam #3 only. Provide 5/16" plate washers for slotted holes.

REVISIONS	
NAME	DATE

CMT
CRAWFORD MURPHY & TILLY, INC.
CONSULTING ENGINEERS
SPRINGFIELD, IL ■ AURORA, IL ■ ST. LOUIS, MO
ROCKFORD, IL ■ PEORIA, IL ■ CHICAGO, IL

ILLINOIS DEPARTMENT OF TRANSPORTATION
STRUCTURAL STEEL DETAILS
F.A.P. ROUTE 726 (IL. RTE. 37)
ILLINOIS ROUTE 37 OVER
LITTLE SALINE CREEK
SECTION 113B-2 STA. 531+81.00
STR. NO. 100-0091 - WILLIAMSON COUNTY
SCALE: NONE DRAWN BY: GLD
DATE: 12/14/07 CHECKED BY: WLB