

T.R.	SECTION	COUNTY	TOTAL SHEETS	SHEET NO.
149	04-09112-00-BR	HAMILTON	13	2
FED. ROAD DIST. NO. 9		ILLINOIS	FED. AID PROJECT	
PROJECT# BROS-065(039)		CONTRACT# 99301		PHONE:
JOB NO. C-99-563-06		BIG CREEK TRIB		(618)-262-8651
LEC JOB # H061019HW				FAX:
				(618)-263-3327

405 W. STATE ST
SUITE 1
PRINCETON, IN 47670
PHONE:
(812)-386-7611
FAX:
(812)-385-2912



PROFESSIONAL DESIGN FIRM
LAND SURVEY &
PROFESSIONAL
ENGINEERING
CORPORATION
184-00087
(62-032435)(95-002769)



AARON M. MEFFORD
NAME
SIGNATURE
9-28-07
DATE
11-30-09
EXPIRES

TOWNSHIP ROUTE 149
OVER BIG CREEK TRIBUTARY
HAMILTON COUNTY, ILLINOIS

SHEET TITLE:

PLAN & PROFILE

SCALE: VARIES

BY: AMM

DATE: 02/07

REV:

2 OF 13 SHEETS

SHEET NO. 2

GENERAL NOTES:

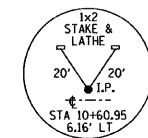
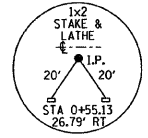
THIS SECTION SHALL BE CONSTRUCTED IN ACCORDANCE WITH THE PLANS, SPECIAL PROVISIONS AND "STANDARD SPECIFICATIONS FOR ROAD AND BRIDGE CONSTRUCTION", ADOPTED JANUARY 1, 2007.

THE WORK INVOLVED ON THIS SECTION CONSISTS OF THE REMOVAL OF THE EXISTING STRUCTURE, THE CONSTRUCTION OF A 60 FOOT LONG SINGLE SPAN PRECAST, PRESTRESSED CONCRETE DECK BEAM BRIDGE, EARTH APPROACHES, AGGREGATE SURFACE COURSE AND OTHER MISCELLANEOUS ITEMS NECESSARY TO COMPLETE THIS SECTION.

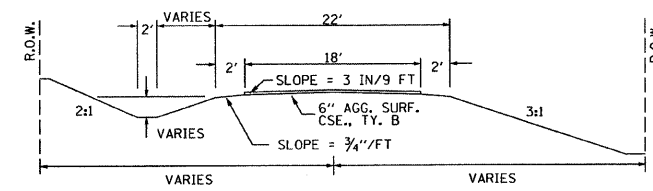
ALL ELEVATIONS ARE BASED ON U.S.G.S. MEAN SEA LEVEL DATUM.

IT SHALL BE THE CONTRACTOR'S RESPONSIBILITY TO CONTACT ALL THE UTILITIES, AFFECTING THE PROJECT, PRIOR TO CONSTRUCTION.

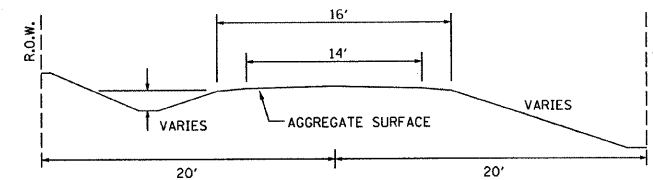
NOTE: CONSTRUCTION TRANSITION
STA 2+00 TO STA 2+50
STA 7+00 TO STA 7+50
ALL QUANTITIES ARE INCLUDED IN THE PROPOSAL



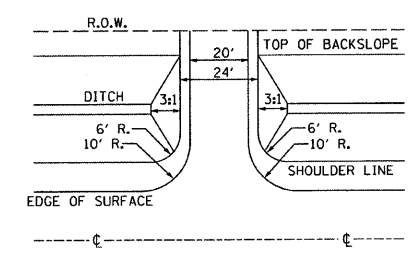
TYPICAL CROSS SECTION PROPOSED



TYPICAL CROSS SECTION EXISTING



FIELD ENTRANCE DETAIL



NOTE: CONSTRUCT SPECIAL DITCH

STA 2+00 TO STA 4+60 LT
STA 2+00 TO STA 4+46 RT
STA 5+50 TO STA 7+50 LT
STA 5+50 TO STA 7+50 RT

NOTE: CONSTRUCT STONE RIPRAP DITCH

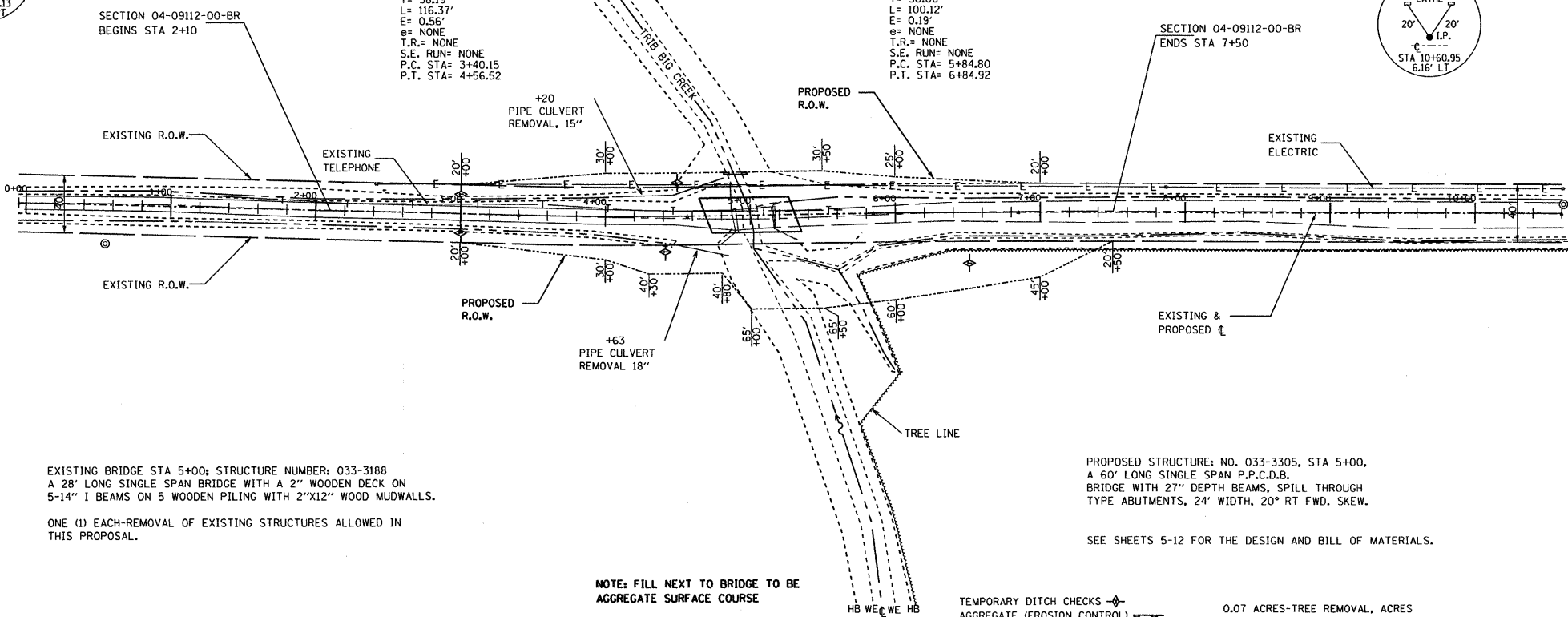
STA 5+11 TO STA 6+50 RT (0.62 TON/LIN FT)
86 TON STONE RIPRAP DITCH ALLOWED IN PROPOSAL.

SEE SHEET NO. 13 FOR STONE RIPRAP DITCH DETAIL.

UTILITIES:
J.U.L.I.E. 1-800-892-0123

WAYNE-WHITE ELECTRIC
618-842-2196

VERIZON
618-395-6189

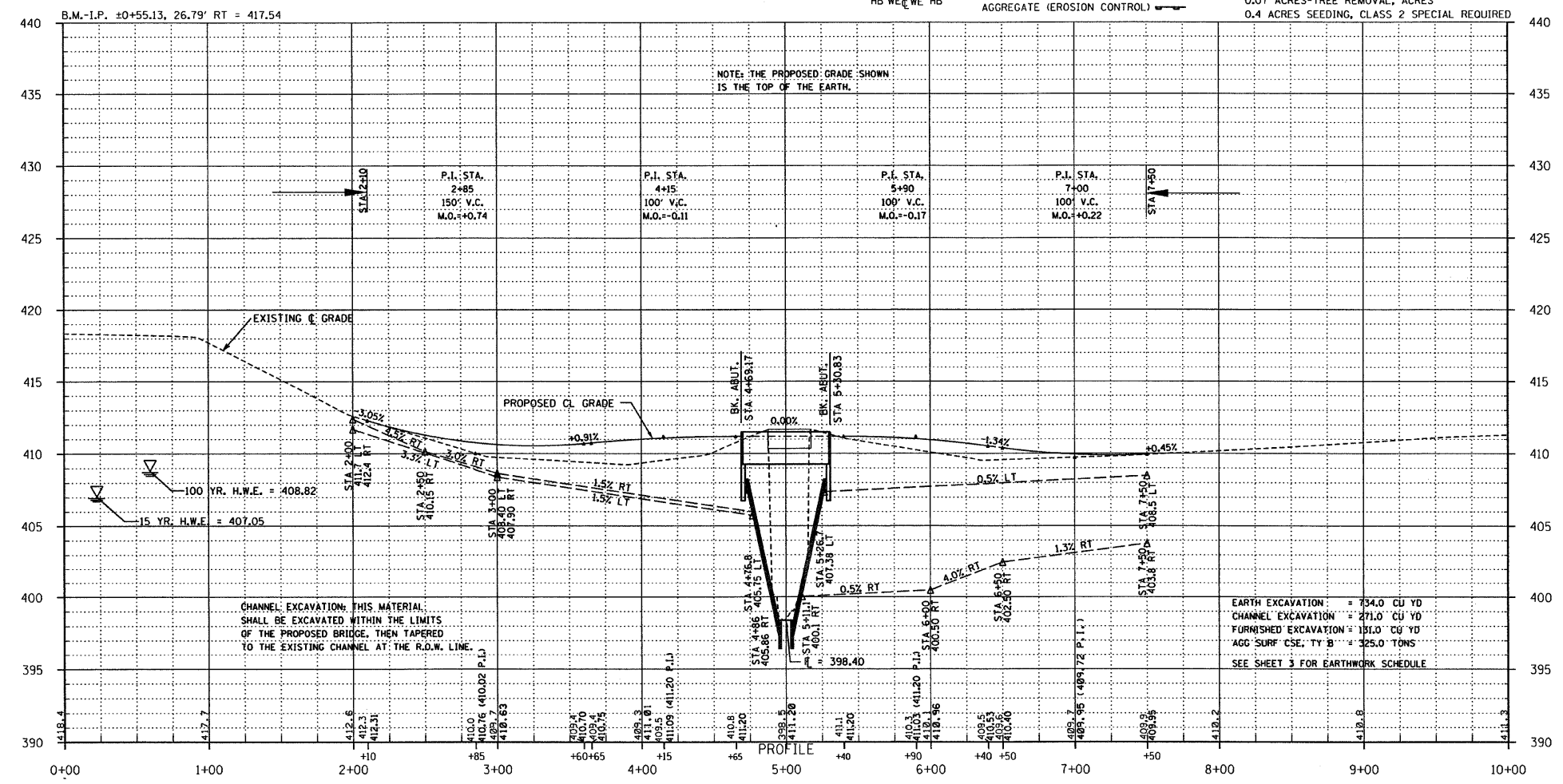


EXISTING BRIDGE STA 5+00; STRUCTURE NUMBER: 033-3188
A 28' LONG SINGLE SPAN BRIDGE WITH A 2" WOODEN DECK ON
5-14" I BEAMS ON 5 WOODEN PILING WITH 2"x12" WOOD MUDDWALLS.
ONE (1) EACH-REMOVAL OF EXISTING STRUCTURES ALLOWED IN
THIS PROPOSAL.

PROPOSED STRUCTURE: NO. 033-3305, STA 5+00,
A 60' LONG SINGLE SPAN P.P.C.D.B.
BRIDGE WITH 27" DEPTH BEAMS, SPILL THROUGH
TYPE ABUTMENTS, 24' WIDTH, 20° RT FWD. SKEW.

SEE SHEETS 5-12 FOR THE DESIGN AND BILL OF MATERIALS.

NOTE: FILL NEXT TO BRIDGE TO BE
AGGREGATE SURFACE COURSE



CHANNEL EXCAVATION: THIS MATERIAL
SHALL BE EXCAVATED WITHIN THE LIMITS
OF THE PROPOSED BRIDGE, THEN TAPERED
TO THE EXISTING CHANNEL AT THE R.O.W. LINE.

EARTH EXCAVATION = 734.0 CU YD
CHANNEL EXCAVATION = 271.0 CU YD
FURNISHED EXCAVATION = 151.0 CU YD
AGG SURF CSE, TY B = 325.0 TONS
SEE SHEET 3 FOR EARTHWORK SCHEDULE