

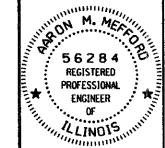
| C.H. | SECTION | COUNTY | TOTAL SHEETS | SHEET NO. |
|--------------------------------|----------------|------------------|--------------|-----------|
| 13 | 06-00100-00-BR | WHITE | 13 | 2 |
| FED. ROAD DIST. NO. 9 ILLINOIS | | LIMEKILN CREEK | | |
| PROJECT # BR05-193251 | | CONTRACT # 99305 | | |
| LEC JOB # H061025WH | | | | |

323 W. 3RD ST.
P.O. BOX 160
MT. CARMEL, IL
62863
PHONE: (618)-262-8651
FAX: (618)-263-3327

405 W. STATE ST
SUITE 1
PRINCETON, IN
47670
PHONE: (812)-386-7611
FAX: (812)-385-2812



PROFESSIONAL DESIGN FIRM
LAND SURVEY & PROFESSIONAL ENGINEERING CORPORATION
184-000887
(62-032435)(35-002769)



AARON M. MEFFORD
NAME
SIGNATURE
9-27-07
DATE
11-30-09
EXPIRES

COUNTY HIGHWAY 13
OVER LIMEKILN CREEK
WHITE COUNTY, ILLINOIS

SHEET TITLE:

PLAN & PROFILE

SCALE: Varies
BY: AMM
DATE: 9/27/07
REV:

2 OF 13 SHEETS

SHEET NO. 2

GENERAL NOTES:

THIS SECTION SHALL BE CONSTRUCTED IN ACCORDANCE WITH THE PLANS, SPECIAL PROVISIONS AND "STANDARD SPECIFICATIONS FOR ROAD AND BRIDGE CONSTRUCTION", ADOPTED JANUARY 1, 2007.

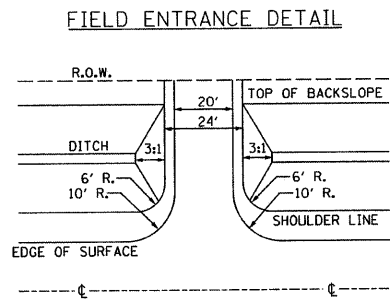
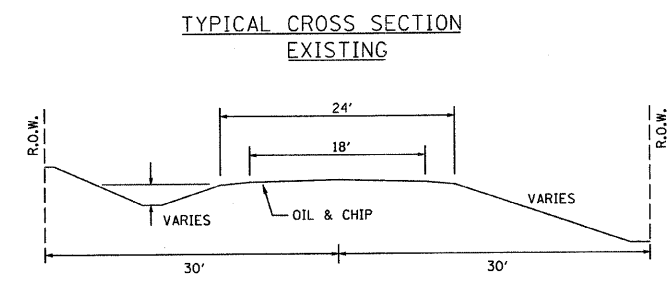
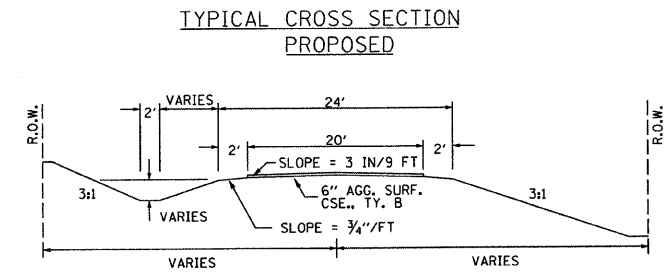
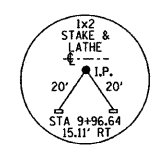
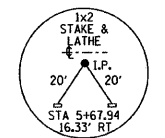
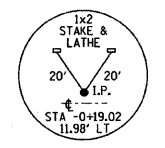
THE WORK INVOLVED ON THIS SECTION CONSISTS OF THE REMOVAL OF THE EXISTING STRUCTURE, THE CONSTRUCTION OF A 45 FOOT LONG SINGLE SPAN PRECAST, PRESTRESSED CONCRETE DECK BEAM BRIDGE, EARTH APPROACHES, AGGREGATE SURFACE COURSE AND OTHER MISCELLANEOUS ITEMS NECESSARY TO COMPLETE THIS SECTION.

ALL ELEVATIONS ARE BASED ON U.S.G.S. MEAN SEA LEVEL DATUM.

IT SHALL BE THE CONTRACTOR'S RESPONSIBILITY TO CONTACT ALL THE UTILITIES, AFFECTING THE PROJECT, PRIOR TO CONSTRUCTION.

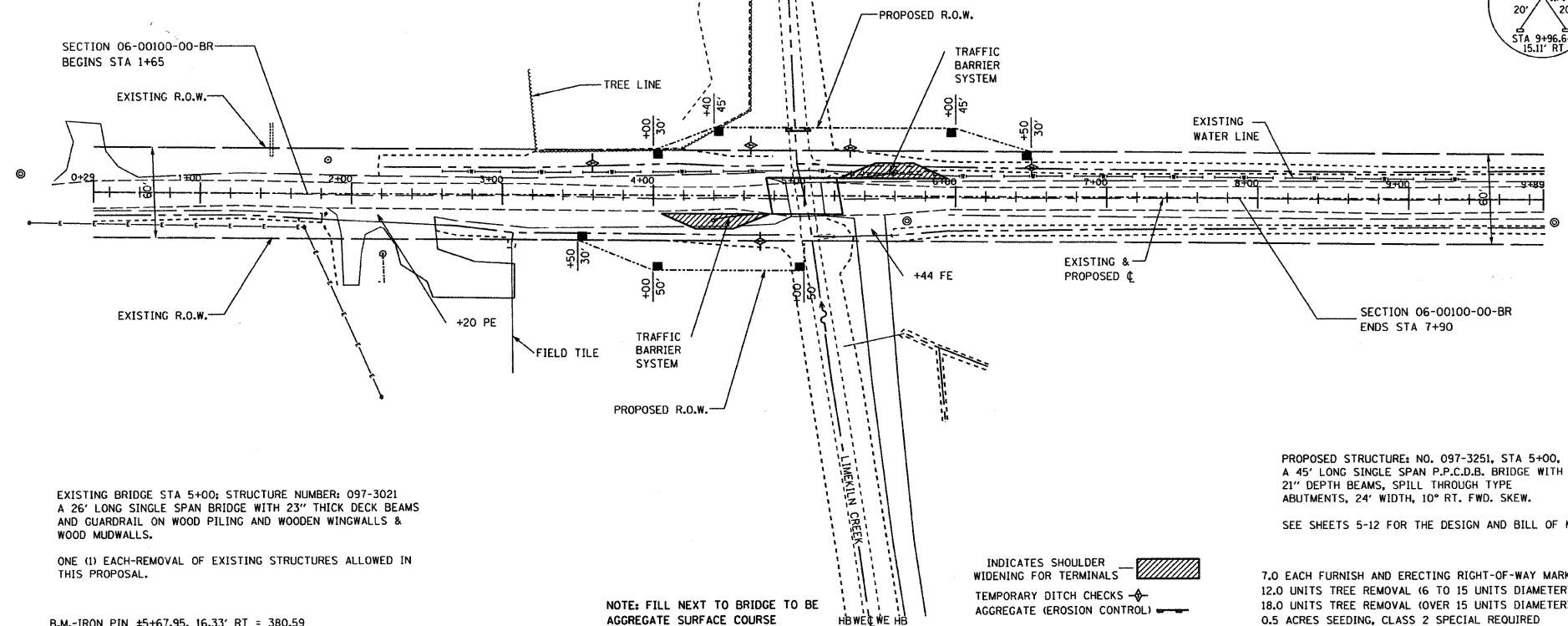
THE CONTRACTOR SHALL HAVE THE WATER LINE LOCATED AND ADJUST THE CHANNEL EXCAVATION AS NECESSARY.

NOTE: CONSTRUCTION TRANSITIONS
STA. 1+65 TO STA 2+00
STA 7+50 TO STA 7+90
ALL QUANTITIES ARE INCLUDED IN THE PROPOSAL



UTILITIES:
J.U.L.I.E. 1-800-892-0123
WAYNE-WHITE ELECTRIC
1-618-842-2196
BROWNSVILLE WATER
1-618-265-3820

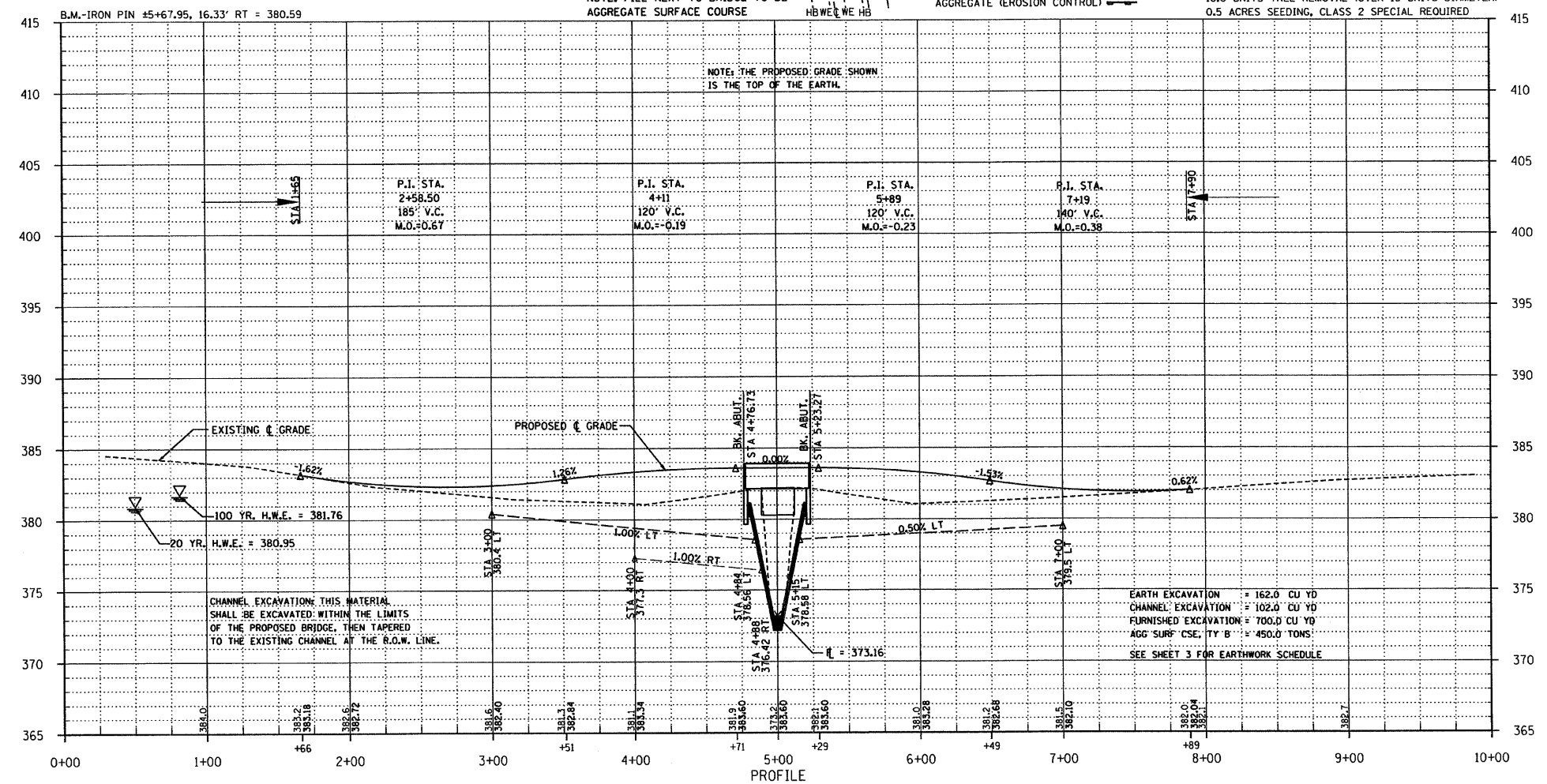
NOTE: CONSTRUCT SPECIAL DITCH
STA 3+00 TO STA 4+84 LT
STA 4+00 TO STA 4+84 RT
STA 5+15 TO STA 7+00 LT



EXISTING BRIDGE STA 5+00; STRUCTURE NUMBER: 097-3021
A 26' LONG SINGLE SPAN BRIDGE WITH 23" THICK DECK BEAMS AND GUARDRAIL ON WOOD PILING AND WOODEN WINGWALLS & WOOD MUDWALLS.
ONE (1) EACH-REMOVAL OF EXISTING STRUCTURES ALLOWED IN THIS PROPOSAL.

NOTE: FILL NEXT TO BRIDGE TO BE AGGREGATE SURFACE COURSE
INDICATES SHOULDER WIDENING FOR TERMINALS
TEMPORARY DITCH CHECKS
AGGREGATE (EROSION CONTROL)

7.0 EACH FURNISH AND ERECTING RIGHT-OF-WAY MARKERS
12.0 UNITS TREE REMOVAL (6 TO 15 UNITS DIAMETER)
18.0 UNITS TREE REMOVAL (OVER 15 UNITS DIAMETER)
0.5 ACRES SEEDING, CLASS 2 SPECIAL REQUIRED



CHANNEL EXCAVATION THIS MATERIAL SHALL BE EXCAVATED WITHIN THE LIMITS OF THE PROPOSED BRIDGE, THEN TAPERED TO THE EXISTING CHANNEL AT THE R.O.W. LINE.

EARTH EXCAVATION = 162.0 CU YD
CHANNEL EXCAVATION = 102.0 CU YD
FURNISHED EXCAVATION = 700.0 CU YD
AGG SURF CSE. TY B = 450.0 TONS
SEE SHEET 3 FOR EARTHWORK SCHEDULE