

DATE: Wednesday, January 09, 2008 4:57:57 PM
 FILE: K:\Duroba\A0725704_Rev 28 PAPI\Draw\Sheets\Inst\Rev 28 PAPI\Doc\RELS\papi-ana.dwg
 UPDATE BY: Jeremy Linke
 LAYOUT: layout1
 DWG: papi-base.dwg
 XREF: papi-base.dwg
 to print: papi-ana.dwg

PHASE	WORK AREA	ALLOWABLE WORK PERIODS	AIRPORT OPERATIONAL RESTRICTIONS
1A	AREA WITHIN RUNWAY 10/28 A.O.A.	UNRESTRICTED FOR FIRST 10 CALENDAR DAYS DURING OPEN EXCAVATIONS AND FOUNDATION WORK. ONCE AREA GRADED PER CRITERIA, DAILY CLOSURES (7:30 A.M. - 3:30 P.M.) MAY BE PERMITTED FOR WIRING AND EQUIPMENT INSTALLATION.	AFFECTED RUNWAY WILL BE CLOSED. AIRCRAFT MAY USE RUNWAY FOR TAXIING AS APPROVED
1B	AREA WITHIN RUNWAY 10/28 AND 2L/20R A.O.A.	CLOSURE OF RUNWAY 2L/20R ONLY PERMITTED BETWEEN 10:00 A.M. AND 2:00 P.M. WEEKDAYS DURING REMOVAL OF VASI BOXES. RUNWAY 10/28 CLOSURE SAME RESTRICTIONS AS PHASE 1A.	AFFECTED RUNWAY(S) WILL BE CLOSED. AIRCRAFT MAY USE RUNWAY FOR TAXIING AS APPROVED
2	AREAS OUTSIDE OF RUNWAY A.O.A., TAXIWAY G A.O.A. DURING DUCT CROSSINGS	NO RESTRICTIONS	TAXIWAY G FROM RUNWAY 10/28 TO TAXIWAY C CLOSED WHEN CONSTRUCTION OCCURS WITHIN TAXIWAY A.O.A.

LEGEND

- PHASE 1A CONSTRUCTION
- PHASE 1B CONSTRUCTION
- PHASE 2 CONSTRUCTION
- CONTRACTOR'S ACCESS TO SITE
- AIRCRAFT MOVEMENT AREA
- AOA - AIRCRAFT OPERATIONS AREA (A.O.A.)
- BARRICADES WITH FLASHING RED LIGHTS
- AIRPORT PROPERTY LINE
- CLOSED RUNWAY MARKER
- ILS GLIDESLOPE AND LOCALIZER CRITICAL AREA

PHASE 1A - WORK WITHIN RUNWAY 10/28 A.O.A. SUGGESTED SEQUENCE OF CONSTRUCTION

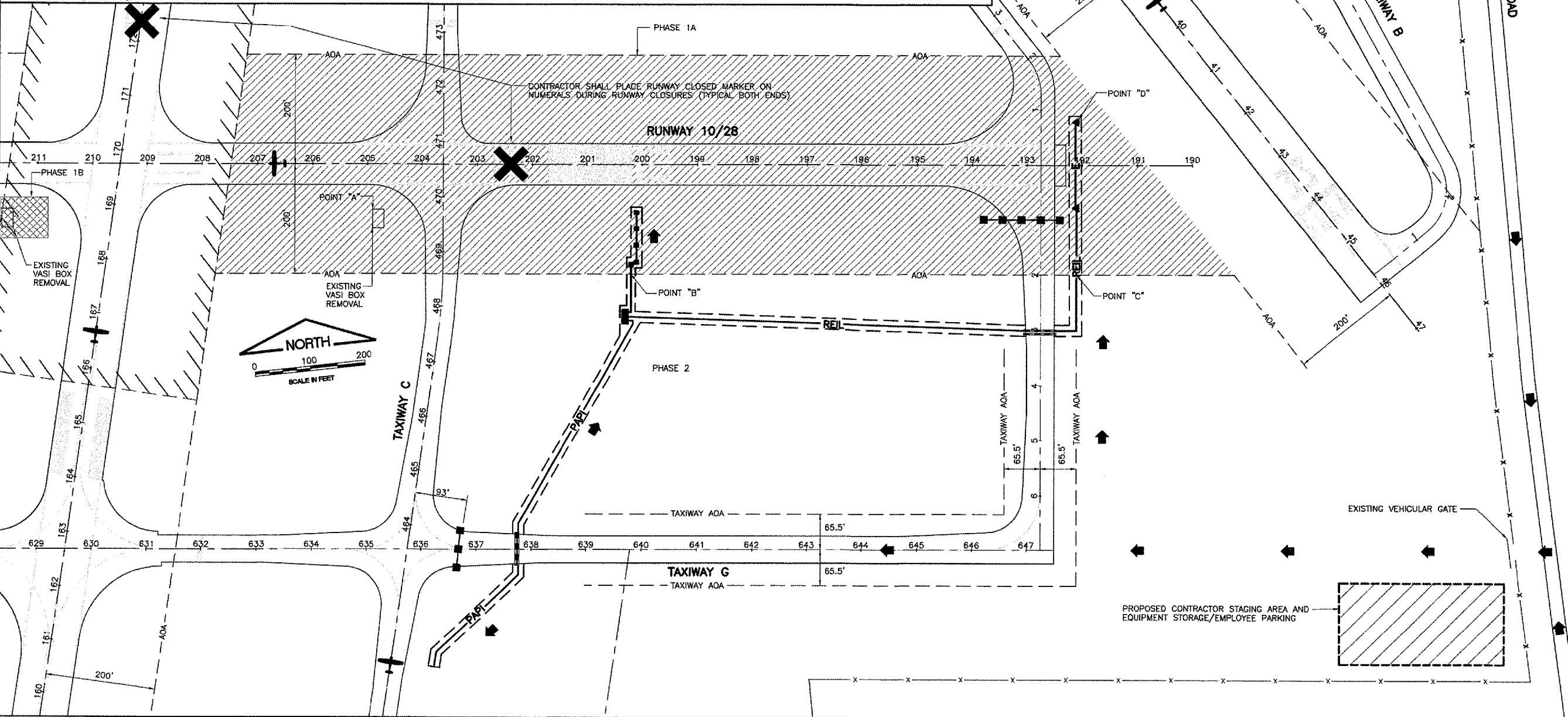
- PLACE LATHE AND RIBBON AT AIR OPERATIONS AREA (A.O.A.) FOR ALL RUNWAYS WITHIN PROJECT LIMITS
- PHASE 1A SHALL BE COMPLETED WITHIN 10 CALENDAR DAYS.
- CLOSE RUNWAY 10/28 AND PLACE RUNWAY CLOSURE MARKERS.
- REMOVE VASI AND CONSTRUCT PAPI AND REIL LIGHT FOUNDATIONS. INSTALL CABLE WITHIN RUNWAY A.O.A.
- BACKFILL FOUNDATIONS TO MEET GRADING CRITERIA. RESTORE CABLE TRENCH.
- INSTALL LANDSCAPING.
- REMOVE CLOSURE MARKERS AND BARRICADES. OPEN ALL TAXIWAYS AND RUNWAYS.

PHASE 1B - WORK WITHIN RUNWAY 2L/20R A.O.A. SUGGESTED SEQUENCE OF CONSTRUCTION

- PHASE 1A SHALL BE COMPLETED WITHIN 3 CALENDAR DAYS.
- CLOSE RUNWAY 2L/20R AND PLACE RUNWAY CLOSURE MARKERS.
- REMOVE VASI AND GRAVEL PAD WITHIN 2L/20R A.O.A.
- BACKFILL TO MEET GRADING CRITERIA.
- INSTALL LANDSCAPING.
- REMOVE CLOSURE MARKERS AND BARRICADES. OPEN ALL TAXIWAYS AND RUNWAYS.

PHASE 2 - WORK OUTSIDE RUNWAY A.O.A.

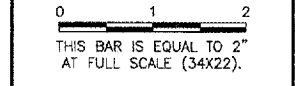
- PLACE TAXIWAY BARRICADES. CLOSE TAXIWAY G, AS NECESSARY FOR DUCT CROSSINGS.
- CONSTRUCT BORE AND JACKING OF DUCT CROSSINGS.
- INSTALL CABLE AND TRENCHING.
- RESTORE DISTURBED AREAS AND LANDSCAPE.
- OPEN TAXIWAY TO TRAFFIC.
- DAILY RUNWAY 10/28 CLOSURES MAY BE PERMITTED FROM 7:30 A.M. TO 3:30 P.M. TO ALLOW INSTALLATION OF PAPI LIGHT HOUSING ASSEMBLIES AND REIL LIGHTS, WIRING AND CONNECTIONS. THE RUNWAY 10/28 MUST BE OPENED DAILY FOLLOWING CONSTRUCTION.



I.L. CONTRACT: DU077
 I.L. LETTING ITEM: 3A
 I.L. PROJECT: DPA-3769
 A.I.P. PROJECT: 3-17-0017-B22

SURVEY BOOK # BOOK #

REVISIONS		
NUMBER	BY	DATE



DUPAGE AIRPORT
WEST CHICAGO, ILLINOIS
INSTALL RUNWAY 28 PAPI AND RELOCATE REIL LIGHTS
SEQUENCE OF CONSTRUCTION
PER AC 150-5370-2E

© Copyright CMT, Inc.
CMT
 CRAWFORD, MURPHY & TILLY, INC.
 CONSULTING ENGINEERS
 License No. 184-000613

DESIGN BY:	DLP
DRAWN BY:	JRO
CHECKED BY:	JRL
APPROVED BY:	DLP
DATE:	MARCH 7, 2008
JOB No:	07257-04