

REIL WIRING DIAGRAM IS SHOWN FOR INFORMATION ONLY. COORDINATE WITH EXISTING REIL MANUFACTURER.

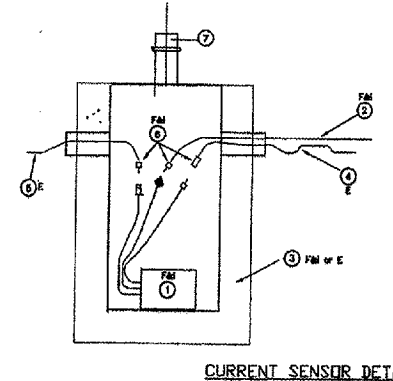
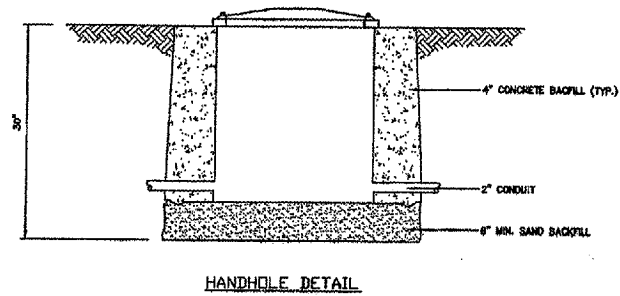
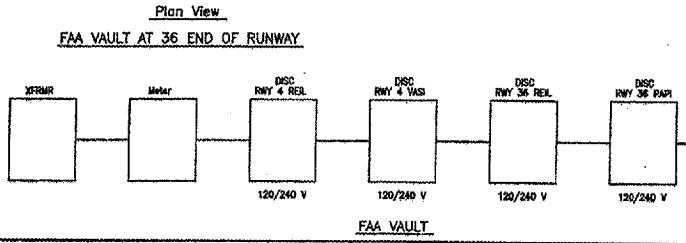
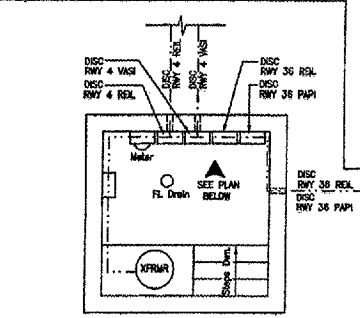
NOTES  
 ① CONTRACTOR TO FURNISH AND INSTALL GROUND BASS ON THE UNIT 1 AND UNIT 2 CABINETS.

IL CONTRACT: **DU077**  
 IL LETTING ITEM: **3A**  
 IL PROJECT: **DPA-3769**  
 A.I.P. PROJECT: **3-17-0017-B22**

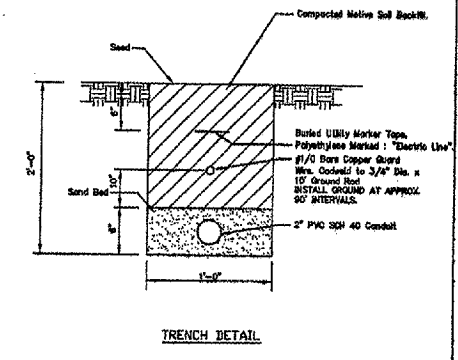
SURVEY BOOK # BOOK #

REVISIONS		
NUMBER	BY	DATE

0 1 2  
 THIS BAR IS EQUAL TO 2" AT FULL SCALE (34X22).



- Notes
- FM ① Avconce Isolation Transformer to match existing airport REL system.
  - FM ② 1-3/4" BODY #10 wwg Armored cable. Addstar 777-1003. Connect to REL Control Cabinet Terminals 1 & 2. Circuit Break 1A/1P
  - FM or E ③ Existing runway light run or Jeppesen LD-1 Light Base con.
  - E ④ Existing Airport lighting circuit
  - E ⑤ Existing Airport lighting circuit
  - FM ⑥ Compatible boot connectors
  - E ⑦ Existing Airport runway or threshold light
- FM = Furnish and Install  
 E = Existing  
 FM or E = Furnish and Install or Existing



DUPAGE AIRPORT  
 WEST CHICAGO, ILLINOIS

INSTALL RUNWAY 28 PAPI AND RELOCATE REIL LIGHTS

REIL WIRING DIAGRAM  
 REIL - RUNWAY 28

© Copyright DMT, Inc.

**CMT**  
 CRAWFORD, MURPHY & TILLY, INC.  
 CONSULTING ENGINEERS  
 License No. 784-000613

**DMT**  
 DuPage Airport

DESIGN BY:	DLP
DRAWN BY:	JRO
CHECKED BY:	JRL
APPROVED BY:	DLP
DATE:	MARCH 7, 2008
JOB No:	07257-04