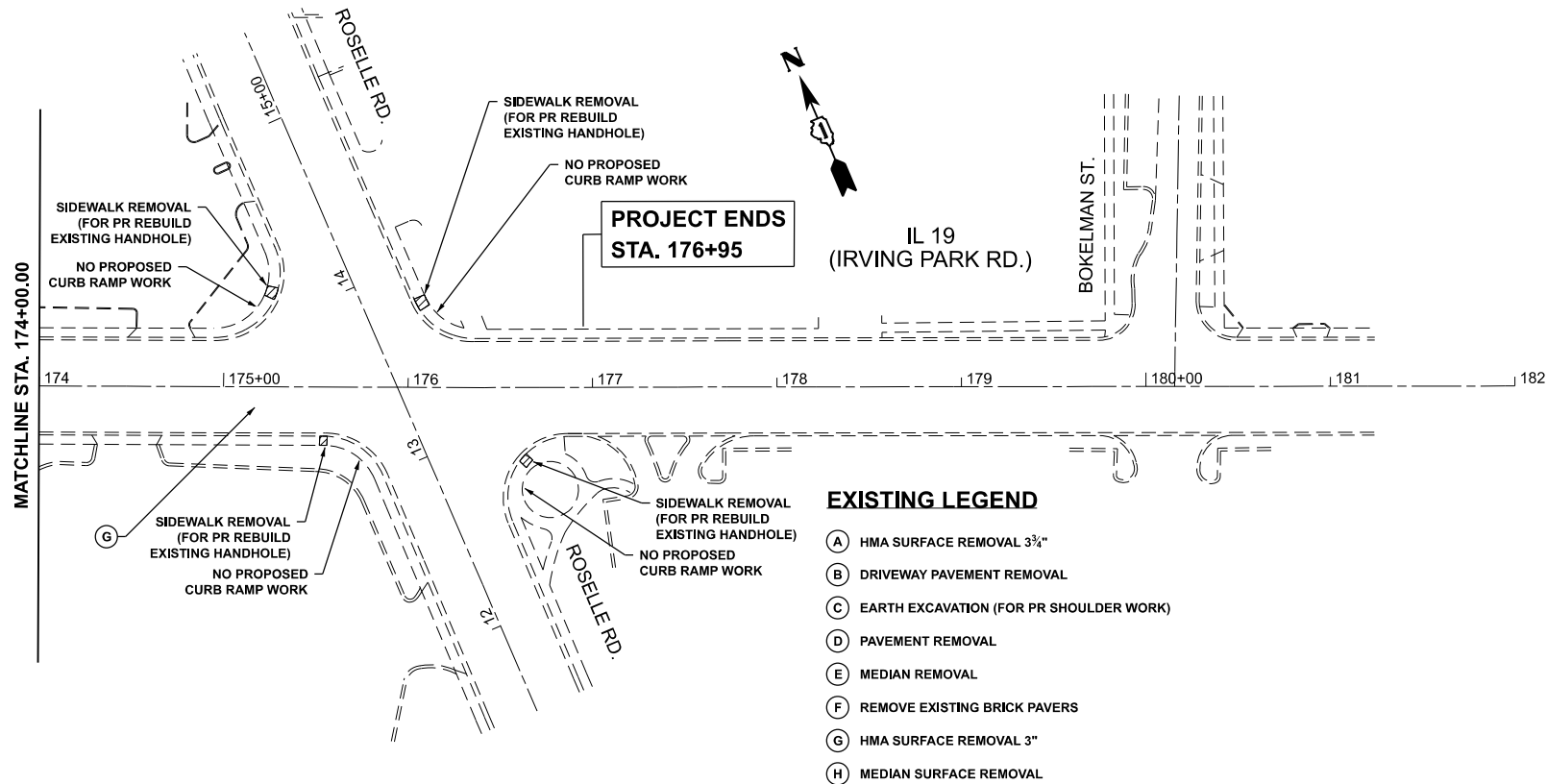


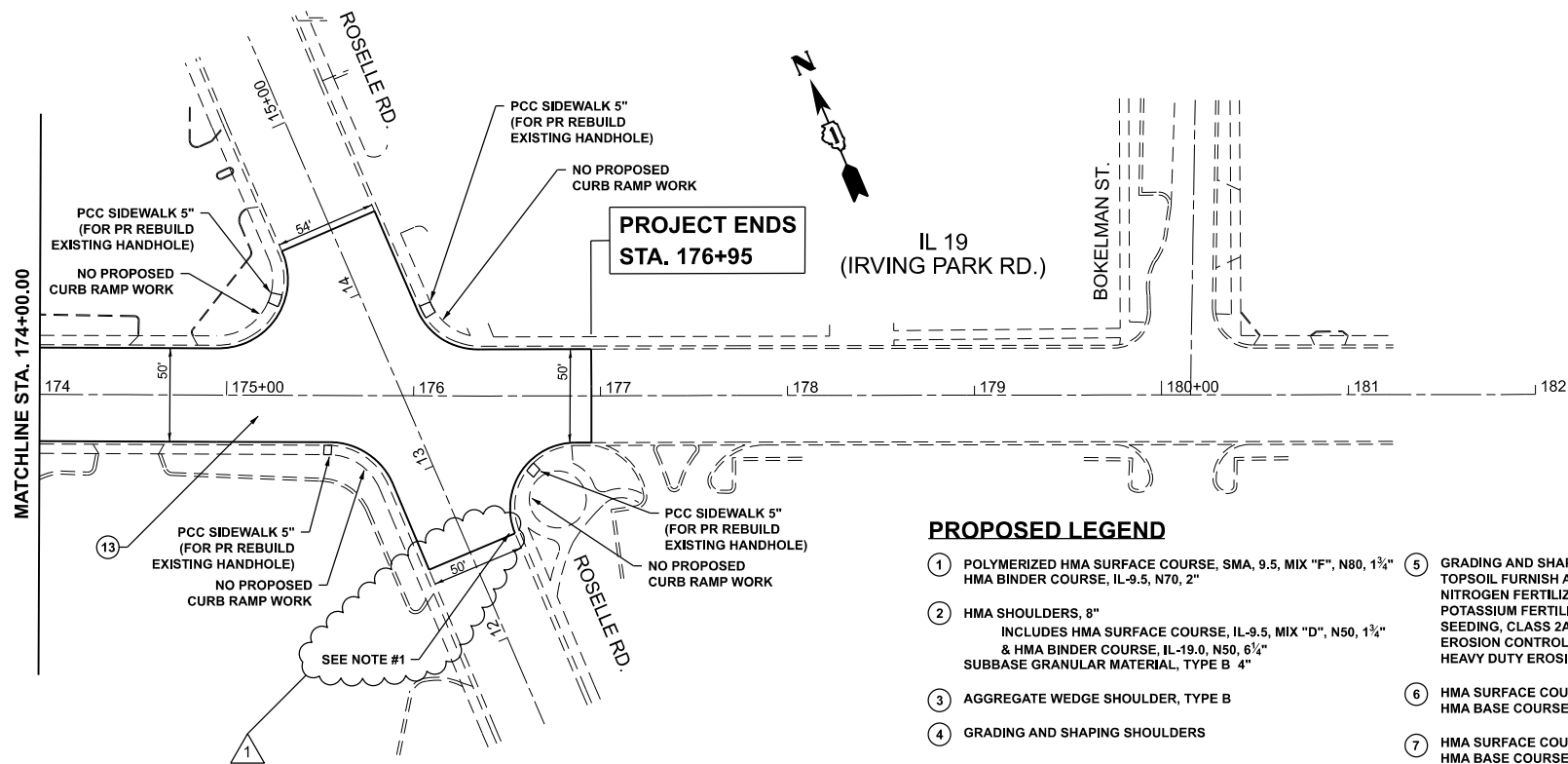
MODEL: S005 (Sheet)
FILE NAME: c:\pwr\work\pwr\ltd\ltd\m\09040\10116422-sh1-S005.dgn

SUMMARY OF QUANTITIES				CONSTRUCTION TYPE CODE													
				80% FED 20% STATE (STP) COOK CO.	80% FED 20% STATE (STP) COOK CO.	80% FED 20% STATE (NHPP) COOK CO.	80% FED 20% STATE (NHPP) COOK CO.	80% FED 20% STATE (STP) DUPAGE CO.	80% FED 20% STATE (STP) DUPAGE CO.	80% FED 20% STATE (NHPP) DUPAGE CO.	80% FED 20% STATE (NHPP) DUPAGE CO.	100% STATE COOK CO.	100% STATE DUPAGE CO.				
CODE NO.	ITEM	UNIT	TOTAL QUANTITY	ROADWAY 0005	TR. SIGNALS 0021	ROADWAY 0005	TR. SIGNALS 0021	ROADWAY 0005	TR. SIGNALS 0021	ROADWAY 0005	TR. SIGNALS 0021	ROADWAY 0005	TR. SIGNALS 0021	ROADWAY 0005	ROADWAY 0005		
				URBAN	URBAN	URBAN	URBAN	URBAN	URBAN	URBAN	URBAN	URBAN	URBAN	URBAN	URBAN		
* 72000100	SIGN PANEL - TYPE 1	SQ FT	5	5													
* 72501000	TERMINAL MARKER - DIRECT APPLIED	EACH	8	5				3									
* 72800100	TELESCOPING STEEL SIGN SUPPORT	FOOT	14.5	14.5													
* 78000100	THERMOPLASTIC PAVEMENT MARKING - LETTERS AND SYMBOLS	SQ FT	1318	753.7		291.2		273.1									
* 78000200	THERMOPLASTIC PAVEMENT MARKING - LINE 4"	FOOT	45247	22906		4472		17425		444							
* 78000400	THERMOPLASTIC PAVEMENT MARKING - LINE 6"	FOOT	5687	3047		2092		383		165							
* 78000500	THERMOPLASTIC PAVEMENT MARKING - LINE 8"	FOOT	213	15		198											
* 78000600	THERMOPLASTIC PAVEMENT MARKING - LINE 12"	FOOT	4147	2407		620		466		654							
* 78000650	THERMOPLASTIC PAVEMENT MARKING - LINE 24"	FOOT	1096	433		387		117		159							
* 78100100	RAISED REFLECTIVE PAVEMENT MARKER	EACH	954	488		185		239		42							
* 78200005	GUARDRAIL REFLECTORS, TYPE A	EACH	40	23				17									
	78300200	RAISED REFLECTIVE PAVEMENT MARKER REMOVAL	EACH	560	286		49	205		20							
	78300202	PAVEMENT MARKING REMOVAL - WATER BLASTING	SQ FT	26186	13656		4354	6973		1203							
* 81028200	UNDERGROUND CONDUIT, GALVANIZED STEEL, 2" DIA.	FOOT	131		128		3										
* 85000200	MAINTENANCE OF EXISTING TRAFFIC SIGNAL INSTALLATION	EACH	7		3		3				1						
* 87301215	ELECTRIC CABLE IN CONDUIT, SIGNAL NO. 14 2C	FOOT	970		786		184										
* 87301225	ELECTRIC CABLE IN CONDUIT, SIGNAL NO. 14 3C	FOOT	247		247												
* 87301900	ELECTRIC CABLE IN CONDUIT, EQUIPMENT GROUNDING CONDUCTOR, NO. 6 1C	FOOT	248		234		14										
* 87900200	DRILL EXISTING HANDHOLE	EACH	10		9		1										
* 88102717	PEDESTRIAN SIGNAL HEAD, LED, 1-FACE, BRACKET MOUNTED WITH COUNTDOWN TIMER	EACH	2		2												
* 88600100	DETECTOR LOOP, TYPE I	FOOT	3863		2190		1104		65		504						
* 89502200	MODIFY EXISTING CONTROLLER	EACH	4		3		1										
* 89502300	REMOVE ELECTRIC CABLE FROM CONDUIT	FOOT	83		83												
* SPECIALTY ITEMS																	
				STATE OF ILLINOIS DEPARTMENT OF TRANSPORTATION				SUMMARY OF QUANTITIES IL 19 (EAST OF WISE RD. TO ROSELLE RD.)				REVISED SHEET 2/18/2025					
								</									

SUMMARY OF QUANTITIES				CONSTRUCTION TYPE CODE											
				80% FED 20% STATE (STP) COOK CO.	80% FED 20% STATE (STP) COOK CO.	80% FED 20% STATE (NHPP) COOK CO.	80% FED 20% STATE (NHPP) COOK CO.	80% FED 20% STATE (STP) DUPAGE CO.	80% FED 20% STATE (STP) DUPAGE CO.	80% FED 20% STATE (NHPP) DUPAGE CO.	80% FED 20% STATE (NHPP) DUPAGE CO.	100% STATE COOK CO.	100% STATE DUPAGE CO.		
				ROADWAY 0005	TR. SIGNALS 0021	ROADWAY 0005	TR. SIGNALS 0021	ROADWAY 0005	TR. SIGNALS 0021	ROADWAY 0005	TR. SIGNALS 0021	ROADWAY 0005	TR. SIGNALS 0021	ROADWAY 0005	ROADWAY 0005
CODE NO.	ITEM	UNIT	TOTAL QUANTITY	URBAN	URBAN	URBAN	URBAN	URBAN	URBAN	URBAN	URBAN	URBAN	URBAN		
* 89502375	REMOVE EXISTING TRAFFIC SIGNAL EQUIPMENT	EACH	6		3		3								
89502350	REMOVE AND REINSTALL ELECTRIC CABLE FROM CONDUIT	FOOT	31		31										
* 89502376	REBUILD EXISTING HANDHOLE	EACH	11		6		1				4				
*															
X0320050	CONSTRUCTION LAYOUT (SPECIAL)	L SUM	1	0.9		0.1									
X0325896	WEED CONTROL TOTAL VEGATATION	GALLON	2.5	2.0		0.5									
X0327036	BIKE PATH REMOVAL	SQ YD	136	97		39									
X0327611	REMOVE AND REINSTALL BRICK PAVER	SQ FT	62					62							
X0327989	REMOVE EXISTING BRICK PAVERS	SQ FT	180					180							
* X1400367	PEDESTRIAN SIGNAL POST, 10 FT.	EACH	1		1										
* X1400378	PEDESTRIAN SIGNAL POST, 5 FT.	EACH	9		8		1								
X2010516	SELECTIVE CLEARING	UNIT	16	12.5		1		2.5							
X2020110	GRADING AND SHAPING SHOULDERS	UNIT	81	32				49							
X2503112	MOWING (SPECIAL)	SQ YD	1250	500		250		500							
X2510635	HEAVY DUTY EROSION CONTROL BLANKET (SPECIAL)	SQ YD	258	258											
X4021000	TEMPORARY ACCESS (PRIVATE ENTRANCE)	EACH	5					5							
X4022000	TEMPORARY ACCESS (COMMERCIAL ENTRANCE)	EACH	3					3							
X4060995	TEMPORARY RAMP (SPECIAL)	SQ YD	629	238				387		4					
X4400501	COMBINATION CURB AND GUTTER REMOVAL AND REPLACEMENT LESS THAN OR EQUAL TO 10 FEET	FOOT	600	332		80		148		40					
X4400503	COMBINATION CURB AND GUTTER REMOVAL AND REPLACEMENT GREATER THAN 10 FEET	FOOT	6524	4058		1187		1179		100					
X4403800	MEDIAN SURFACE REMOVAL	SQ FT	3596			3596									
X5537800	STORM SEWERS TO BE CLEANED 12"	FOOT	510									240	270		
X6030310	FRAMES AND LIDS TO BE ADJUSTED (SPECIAL)	EACH	39	13		2		17		7					
X6061311	CONCRETE MEDIAN SURFACE, 5 INCH	SQ FT	381			381									
X6065768	CONCRETE MEDIAN SURFACE, 12"	SQ FT	5484	5484											
X6700407	ENGINEER'S FIELD OFFICE, TYPE A (D1)	CAL MO	12	6.48		1.08		4.32		0.12					
* SPECIALTY ITEMS															
11															
11															
11															
11															
11															
11															
11															
11															
11															
11															
11															
11															
11															
11															
11															
11															
11															
11															
11															
11															
11															
11															
11															
11															
11															
11															
11															
11															
11															
11															
11															
11															
11															
11															
11															
11															
11															
11															
11															
11															
11															
11															
11															
11															
11															
11															
11															
11															
11															
11															
11															
11															
11															
11															
11															
11															
11															
11															
11															
11															
11															
11															
11															
11															
11															
11															
11															
11															
11															
11															
11															
11															
11															
11															
11															
11															
11															
11															
11															
11															
11															
11															
11															
11															
11															
11															
11															
11															
11															
11															
11															
11															
11															
11															
11															
11															
11															
11															
11															
11															
11															
11															
11															
11															
11															
11															
11															
11															
11															
11															
11															
11															
11															
11															
11															
11															
11															
11															
11															
11															
11															
11															
11															
11															
11															
11															
11															
11															
11															
11															
11															
11															
11															
11															
11															
11															
11															
11															
11															
11															
11															
11															
11															
11															
11															
11															
11															



EXISTING



NOTES:

1. FRAME AND LID TO BE REPLACED – SUPPLIED BY OTHERS. CONTRACTOR TO CONTACT THE DUPAGE WATER COMMISSION PIPELINE DEPARTMENT AT 630-834-0100 NO LESS THAN 48 BUSINESS HOURS PRIOR TO FRAME AND LID ADJUSTMENT WORK SO THAT A NEW FRAME AND LID CAN BE DELIVERED TO THE SITE. CONTRACTOR IS RESPONSIBLE FOR THE FRAME AND LID UPON DELIVERY. NEW ADJUSTMENT RINGS SHALL BE USED TO BRING THE FRAME AND LID TO GRADE AND IT SHALL BE CENTERED UPON THE MANHOLE OPENING.

PROPOSED

MODEL: IL 19 - DnPlan11
FILE NAME: c:\pwwork\pwwork\il19\116422-shp-planDoutlet.dgn

USER NAME	= Farhan.Tariq	DESIGNED	-	REVISED	-	FT, 1/21/2025
		DRAWN	-	REVISED	-	△ FT, 2/11/2025
		CHECKED	-	REVISED	-	
PLOT DATE	= 2/11/2025	DATE	-	REVISED	-	

STATE OF ILLINOIS
DEPARTMENT OF TRANSPORTATION





EXISTING AND PROPOSED ROADWAY PLAN
IL 19 (EAST OF WISE RD. TO ROSELLE RD.)

SCALE: SHEET OF SHEETS STA. 174+00.00 TO STA. 182+00.00

1 REVISED SHEET 2/18/2025

F.A.U. RTE.	SECTION	COUNTY	TOTAL SHEETS	SHEET NO.
1321	FAU 1321 22 RS	COOK & DUPAGE	75	25
CONTRACT NO. 62R58				
ILLINOIS FED. AID PROJECT				

TYPE	NO. OF LAMPS	LED WATTAGE	TOTAL WATTAGE
SIGNAL HEAD			
3 - SECTION	8	11	88
4 - SECTION	-	14	-
5 - SECTION	4	13	52
PROGRAMMABLE SIGNALS			
3 - SECTION	-	22	-
4 - SECTION	-	32	-
5 - SECTION	-	28	-
PED. SIGNAL	8	15	120
CONTROLLER	1	150	150
MASTER CONTROLLER	-	100	-
UPS	1	25	25
DETECTION RADAR	-	20	-
VIDEO	-	20	-
BLANK-OUT SIGN	-	25	-
NETWORK SWITCH II OR III	-	35	-
CELLULAR MODEM	-	15	-
TOTAL UPS SIZING =			435
UPS CHARGING	1	225	225
BATTERY HEATER MAT	1	180	180
CABINET HEATER	1	200	200
FLASHER	-	15	-
LED STREET NAME SIGN	-	120	-
LUMINAIRE	-	240	-
TOTAL SERVICE WIRE SIZING =			1040

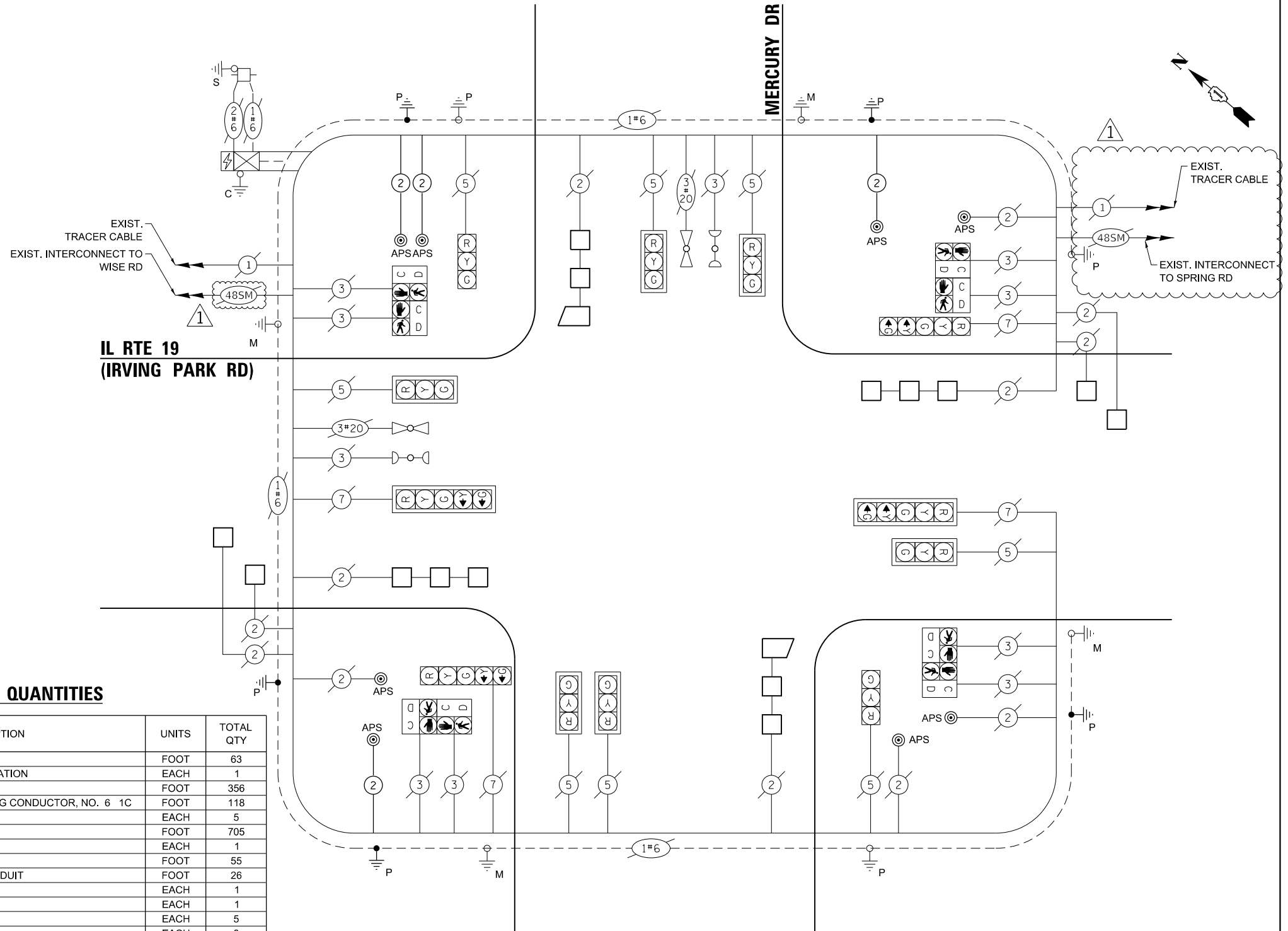
 PROTECTED PHASE
 PROTECTED/PERMITTED PHASE
 PEDESTRIAN PHASE
 OVERLAP

ITEM DESCRIPTION	UNITS	TOTAL QTY
UNDERGROUND CONDUIT, GALVANIZED STEEL, 2" DIA.	FOOT	63
MAINTENANCE OF EXISTING TRAFFIC SIGNAL INSTALLATION	EACH	1
ELECTRIC CABLE IN CONDUIT, SIGNAL NO. 14 2C	FOOT	356
ELECTRIC CABLE IN CONDUIT, EQUIPMENT GROUNDING CONDUCTOR, NO. 6 1C	FOOT	118
DRILL EXISTING HANDHOLE	EACH	5
DETECTOR LOOP, TYPE I	FOOT	705
MODIFY EXISTING CONTROLLER	EACH	1
REMOVE ELECTRIC CABLE FROM CONDUIT	FOOT	55
REMOVE AND REINSTALL ELECTRIC CABLE FROM CONDUIT	FOOT	26
REMOVE EXISTING TRAFFIC SIGNAL EQUIPMENT	EACH	1
REBUILD EXISTING HANDHOLE	EACH	1
PEDESTRIAN SIGNAL POST, 5 FT.	EACH	5
ACCESSIBLE PEDESTRIAN SIGNALS	EACH	8
CONCRETE FOUNDATION, TYPE A 12-INCH DIAMETER	FOOT	20
RE-OPTIMIZE TRAFFIC SIGNAL SYSTEM LEVEL 1	EACH	1

ENERGY COSTS TO:
VILLAGE OF SCHAUMBURG
101 SCHAUMBURG COURT
SCHAUMBURG, IL 60193-1878

ENERGY SUPPLY:

CONTACT: NEW BUSINESS DEPT.
PHONE: (866) 639-3532
COMPANY: COMMONWEALTH EDISON
ACCOUNT NUMBER: 61783-02111



1

Sam Schwartz 200 S. WACKER
SUITE 1400
CHICAGO, IL 60606
TEL: (773) 305-0800

USER NAME	= erica.salutz
PLOT SCALE	= 40.0000 ' / in.
PLOT DATE	= 2/11/2025

DESIGNED	-	ERICA SALUTZ
DRAWN	-	ERICA SALUTZ
CHECKED	-	PETER WOJTKIEWICZ
DATE	-	01/21/2025

REVISED	-	1 02/10/2025
REVISED	-	
REVISED	-	
REVISED	-	

**CABLE PLAN, PHASE DESIGNATION DIAGRAM, EMERGENCY VEHICLE
PREEMPTION SEQUENCE, AND SUMMARY OF QUANTITIES
IL RTE 19 (IRVING PARK RD) AT MERCURY DR**

SCALE:	SHEET	OF	SHEETS	STA.	TO STA.
--------	-------	----	--------	------	---------

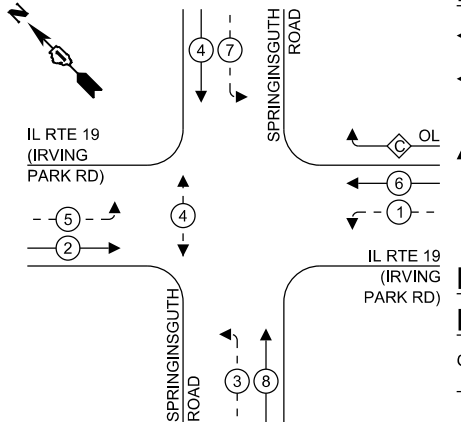
1 REVISED SHEET 2/18/2025

1 **TS 1976**
IDOT CENTRACS
FORMER ECON 158

F.A.U. RTE.	SECTION	COUNTY	TOTAL SHEETS	SHEET NO.
1321	FAU 1321 22 RS	*	75	50
* COOK & DUPAGE		CONTRACT NO. 62R58		
	ILLINOIS	FED. AID PROJECT		

FILE NAME: M3 201913 C:\18-03-1500 DOT RTE 190 - Various Traffic Signal Design\Graphics\WO 24-010-APS & Various Tasks\62R58\CAD\62R58-Sheet_03_IL_19 at Springsguth.dgn

EXISTING CONTROLLER SEQUENCE



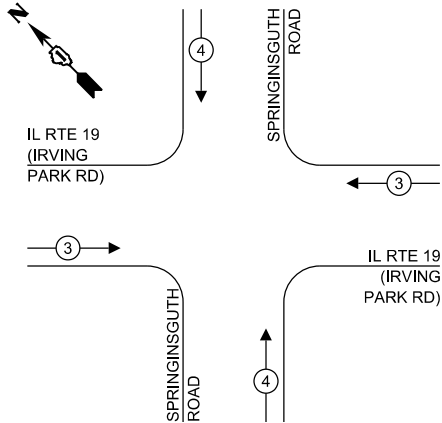
LEGEND:

- PROTECTED PHASE
- PROTECTED/PERMITTED PHASE
- PEDESTRIAN PHASE
- OVERLAP

RIGHT TURN OVERLAP PHASE DESIGNATION:

OVERLAP LETTER	PERMISSIVE PHASE	PROTECTED PHASE
C	= 6 +	7

EXISTING EMERGENCY VEHICLE PREEMPTION SEQUENCE



TRAFFIC SIGNAL ELECTRICAL SERVICE REQUIREMENTS

TYPE	NO. OF LAMPS	LED WATTAGE	TOTAL WATTAGE
SIGNAL HEAD			
3 - SECTION	9	11	99
4 - SECTION	-	14	-
5 - SECTION	10	13	130
PROGRAMMABLE SIGNALS			
3 - SECTION	-	22	-
4 - SECTION	-	32	-
5 - SECTION	-	28	-
PED. SIGNAL	4	15	60
CONTROLLER	1	150	150
MASTER CONTROLLER	-	100	-
UPS	1	25	25
DETECTION RADAR	-	20	-
VIDEO	-	20	-
BLANK-OUT SIGN	-	25	-
NETWORK SWITCH II OR III	-	35	-
CELLULAR MODEM	-	15	-
TOTAL UPS SIZING =			464
UPS CHARGING	1	225	225
BATTERY HEATER MAT	1	180	180
CABINET HEATER	1	200	200
FLASHER	-	15	-
LED STREET NAME SIGN	-	120	-
LUMINAIRE	-	240	-
TOTAL SERVICE WIRE SIZING =			1069

ENERGY COSTS TO:
VILLAGE OF SCHAUMBURG
101 SCHAUMBURG COURT
SCHAUMBURG, IL 60193-1878
ENERGY SUPPLY:
CONTACT: NEW BUSINESS DEPT.
PHONE: (866) 639-3532
COMPANY: COMMONWEALTH EDISON
ACCOUNT NUMBER: 6831011222

Sam Schwartz
200 S. WACKER
SUITE 1400
CHICAGO, IL 60606
TEL: (773) 305-0800

USER NAME = erica.salutz
PLOT SCALE = 40,0000 ' / in.
PLOT DATE = 2/11/2025

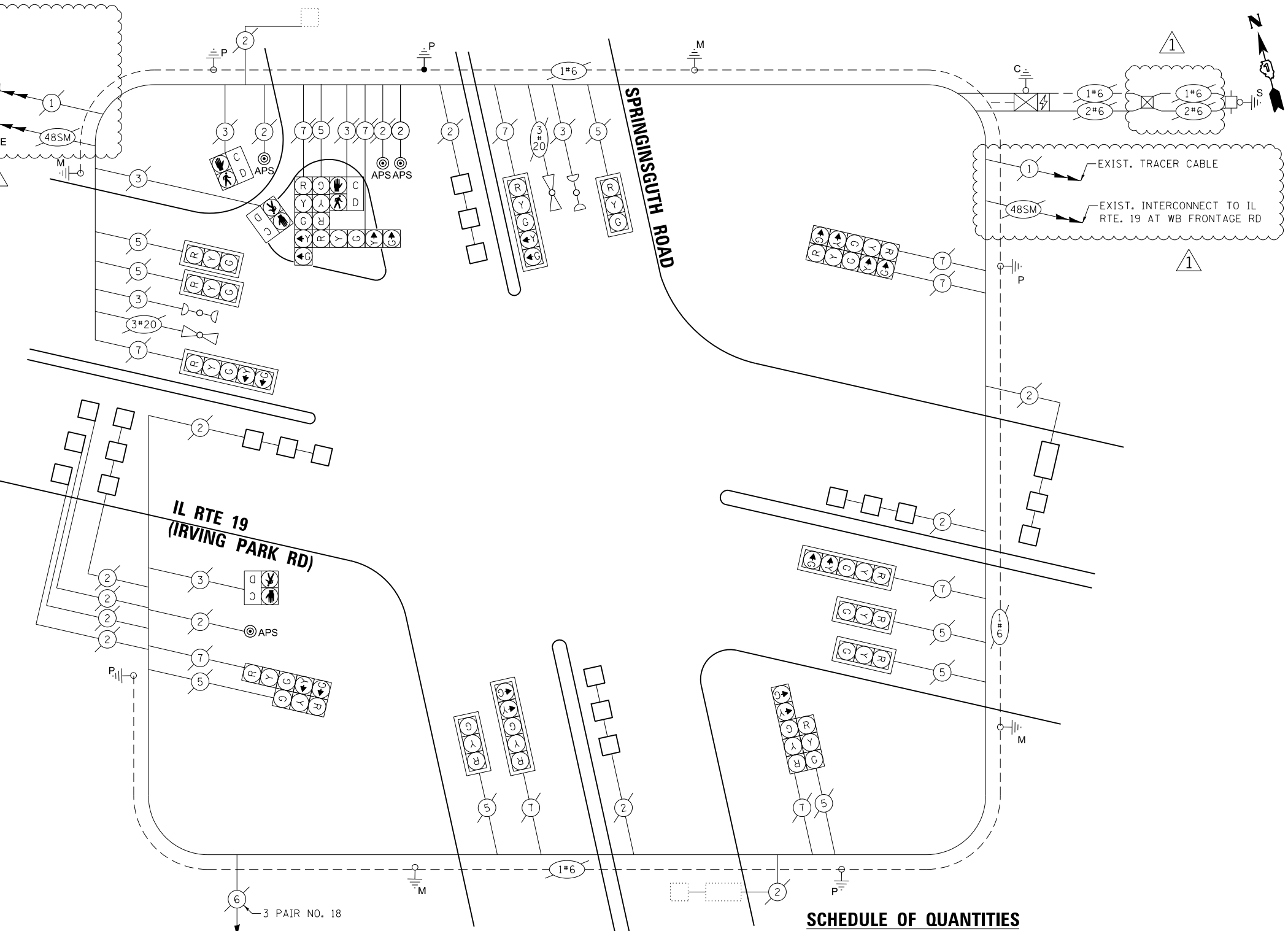
DESIGNED - ERICA SALUTZ	REVISED - 02/10/2025
DRAWN - ERICA SALUTZ	REVISED -
CHECKED - PETER WOJTKIEWICZ	REVISED -
DATE - 01/21/2025	REVISED -

STATE OF ILLINOIS
DEPARTMENT OF TRANSPORTATION

CABLE PLAN, PHASE DESIGNATION DIAGRAM, EMERGENCY VEHICLE
PREEMPTION SEQUENCE, AND SUMMARY OF QUANTITIES
IL RTE 19 (IRVING PARK RD) AT SPRINGSGUTH RD

SCALE: SHEET OF SHEETS STA. TO STA.

F.A.U. RTE.	SECTION	COUNTY	TOTAL SHEETS	SHEET NO.
1321	FAU 1321 22 RS	*	75	52
* COOK & DUPAGE		CONTRACT NO. 62R58		
ILLINOIS		FED. AID PROJECT		



CABLE PLAN
(NOT TO SCALE)

SCHEDULE OF QUANTITIES

ITEM DESCRIPTION	UNITS	TOTAL QTY
UNDERGROUND CONDUIT, GALVANIZED STEEL, 2" DIA.	FOOT	3
MAINTENANCE OF EXISTING TRAFFIC SIGNAL INSTALLATION	EACH	1
ELECTRIC CABLE IN CONDUIT, SIGNAL NO. 14 2C	FOOT	184
ELECTRIC CABLE IN CONDUIT, EQUIPMENT GROUNDING CONDUCTOR, NO. 6 1C	FOOT	14
DRILL EXISTING HANDHOLE	EACH	1
DETECTOR LOOP, TYPE I	FOOT	833
MODIFY EXISTING CONTROLLER	EACH	1
REMOVE EXISTING TRAFFIC SIGNAL EQUIPMENT	EACH	1
REBUILD EXISTING HANDHOLE	EACH	1
PEDESTRIAN SIGNAL POST, 5 FT.	EACH	1
ACCESSIBLE PEDESTRIAN SIGNALS	EACH	4
CONCRETE FOUNDATION, TYPE A 12-INCH DIAMETER	FOOT	4
RE-OPTIMIZE TRAFFIC SIGNAL SYSTEM LEVEL 1	EACH	1

TS 1965
IDOT CENTRACS
FORMER ECON 89

FILE NAME: M4 201913 CHIL18-03-2500 IDOT RTE 190 - Various Traffic Signal DesignGraphics\WO 24-010_APS & Various Tasks\62R58\CAD\62R58_Sheet_03a_IL 19 at W Frontage.dgn

Sam Schwartz
200 S. WACKER
SUITE 1400
CHICAGO, IL 60606
TEL: (773) 305-0800

USER NAME = erica.salutz	DESIGNED - ERICA SALUTZ	REVISED - 02/10/2025
	DRAWN - ERICA SALUTZ	REVISED -
PLOT SCALE = 40,0000 ' / in.	CHECKED - PETER WOJTKIEWICZ	REVISED -
PLOT DATE = 2/11/2025	DATE - 01/21/2025	REVISED -

STATE OF ILLINOIS
DEPARTMENT OF TRANSPORTATION

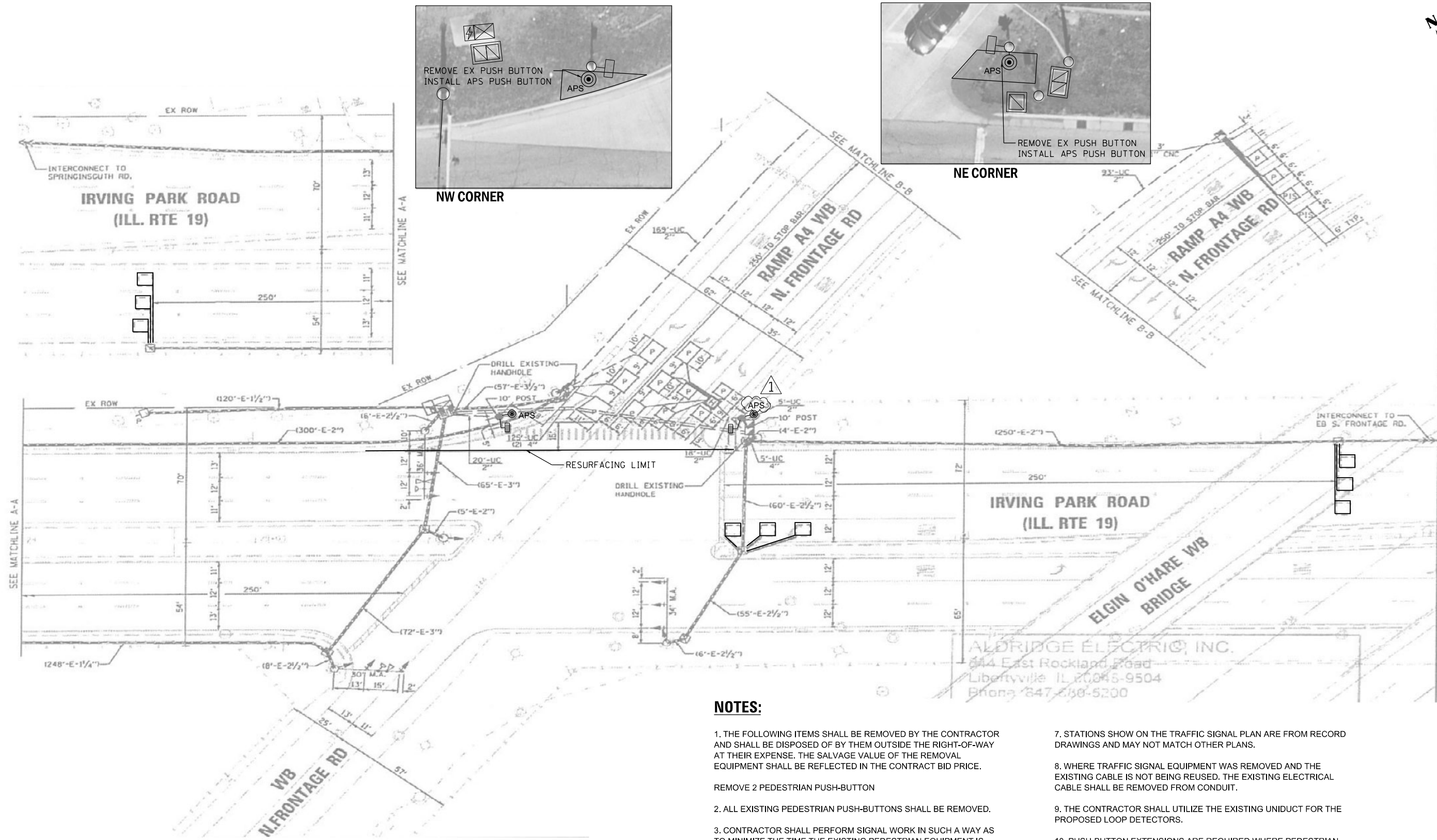
TRAFFIC SIGNAL MODERNIZATION PLAN
IL RTE 19 (IRVING PARK RD) AT WB FRONTAGE ROAD

SCALE: SHEET OF SHEETS STA. TO STA.

REVISED SHEET 2/18/2025

F.A.U. RTE.	SECTION	COUNTY	TOTAL SHEETS	SHEET NO.
1321	FAU 1321 22 RS	*	75	53
* COOK & DUPAGE		CONTRACT NO. 62R58		
ILLINOIS		FED. AID PROJECT		

TS 21710
IDOT CENTRACS
FORMER ECON 89



NOTES:

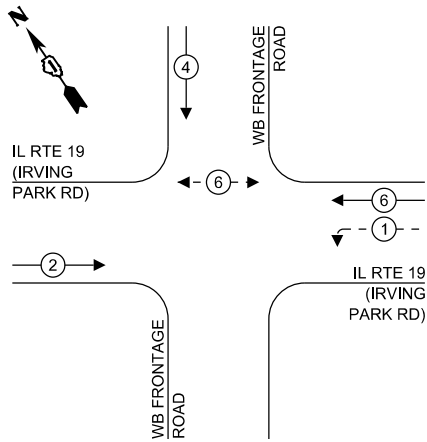
1. THE FOLLOWING ITEMS SHALL BE REMOVED BY THE CONTRACTOR AND SHALL BE DISPOSED OF BY THEM OUTSIDE THE RIGHT-OF-WAY AT THEIR EXPENSE. THE SALVAGE VALUE OF THE REMOVAL EQUIPMENT SHALL BE REFLECTED IN THE CONTRACT BID PRICE.

REMOVE 2 PEDESTRIAN PUSH-BUTTON
2. ALL EXISTING PEDESTRIAN PUSH-BUTTONS SHALL BE REMOVED.
3. CONTRACTOR SHALL PERFORM SIGNAL WORK IN SUCH A WAY AS TO MINIMIZE THE TIME THE EXISTING PEDESTRIAN EQUIPMENT IS INOPERATIONAL.
4. CONTRACTOR SHALL CONFIRM THE FINAL LOCATION OF THE PEDESTRIAN EQUIPMENT BEFORE INSTALLATION WITH THE TRAFFIC SIGNAL AREA ENGINEER.
5. DIMENSIONS SHOWN ARE FROM CENTER OF POST TO BACK OF CURB AND ARE APPROXIMATE AND PLACEMENT OF THE POST SHALL BE VERIFIED WITH THE ENGINEER PRIOR TO THE START OF WORK.
6. APS SHALL BE PLACED PARALLEL TO THE CORRESPONDING CROSSWALK.
7. STATIONS SHOW ON THE TRAFFIC SIGNAL PLAN ARE FROM RECORD DRAWINGS AND MAY NOT MATCH OTHER PLANS.
8. WHERE TRAFFIC SIGNAL EQUIPMENT WAS REMOVED AND THE EXISTING CABLE IS NOT BEING REUSED. THE EXISTING ELECTRICAL CABLE SHALL BE REMOVED FROM CONDUIT.
9. THE CONTRACTOR SHALL UTILIZE THE EXISTING UNIDUCT FOR THE PROPOSED LOOP DETECTORS.
10. PUSH-BUTTON EXTENSIONS ARE REQUIRED WHERE PEDESTRIAN PUSH-BUTTON LOCATIONS/INSTALLATIONS DO NOT MEET THE REQUIREMENTS OF THE MUTCD OR THE INFORMATION FOUND IN THE "AMERICANS WITH DISABILITIES ACT ACCESSIBILITY GUIDELINES FOR BUILD AND FACILITIES". THE PUSH-BUTTON EXTENSIONS SHALL BE INCLUDED IN THE COST OF THE ACCESSIBLE PEDESTRIAN SIGNALS.

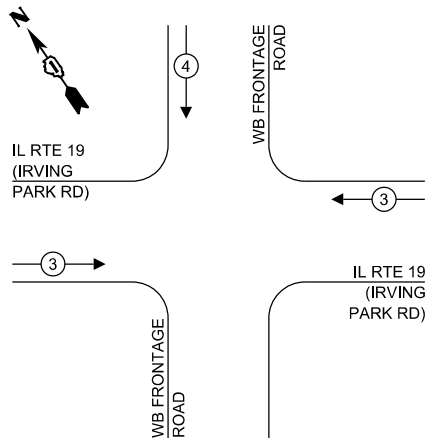
TS SHT NO. 14

FILE NAME: MS_201913_Cul18-03-25100 DDT FTE 190 - Various Traffic Signal DesignGraphics\WO 24-010-APS & Various Traffic Signal DesignGraphics\CAD\241859_Sheet_03a_IL 19 at W Frontage.dgn

EXISTING CONTROLLER SEQUENCE



EXISTING EMERGENCY VEHICLE PREEMPTION SEQUENCE



LEGEND:

- PROTECTED PHASE
- PROTECTED/PERMITTED PHASE
- PEDESTRIAN PHASE
- OVERLAP

TRAFFIC SIGNAL ELECTRICAL SERVICE REQUIREMENTS

TYPE	NO. OF LAMPS	LED WATTAGE	TOTAL WATTAGE
SIGNAL HEAD			
3 - SECTION	11	11	121
4 - SECTION	-	14	-
5 - SECTION	2	13	26
PROGRAMMABLE SIGNALS			
3 - SECTION	-	22	-
4 - SECTION	-	32	-
5 - SECTION	-	28	-
PED. SIGNAL	2	15	30
CONTROLLER	1	150	150
MASTER CONTROLLER	-	100	-
UPS	1	25	25
DETECTION RADAR	-	20	-
VIDEO	-	20	-
BLANK-OUT SIGN	-	25	-
NETWORK SWITCH II OR III	-	35	-
CELLULAR MODEM	-	15	-
TOTAL UPS SIZING =			352
UPS CHARGING	1	225	225
BATTERY HEATER MAT	1	180	180
CABINET HEATER	1	200	200
FLASHER	-	15	-
LED STREET NAME SIGN	-	120	-
LUMINAIRE	-	240	-
TOTAL SERVICE WIRE SIZING =			957

ENERGY COSTS TO:
ILLINOIS DEPT OF TRANSPORTATION
201 WEST CENTER COURT
SCHAUMBURG, IL 60196-1096
ENERGY SUPPLY:
CONTACT: NEW BUSINESS DEPT.
PHONE: (866) 639-3532
COMPANY: COMMONWEALTH EDISON
ACCOUNT NUMBER: 61783-02111

Sam Schwartz
200 S. WACKER
SUITE 1400
CHICAGO, IL 60606
TEL: (773) 305-0800

USER NAME = erica.salutz
PLOT SCALE = 40,0000 ' / in.
PLOT DATE = 2/11/2025

DESIGNED - ERICA SALUTZ	REVISED - 02/10/2025
DRAWN - ERICA SALUTZ	REVISED -
CHECKED - PETER WOJTKIEWICZ	REVISED -
DATE - 01/21/2025	REVISED -

STATE OF ILLINOIS
DEPARTMENT OF TRANSPORTATION

CABLE PLAN, PHASE DESIGNATION DIAGRAM, EMERGENCY VEHICLE PREEMPTION SEQUENCE, AND SUMMARY OF QUANTITIES
IL RTE 19 (IRVING PARK RD) AT WB FRONTAGE ROAD

SCALE: SHEET OF SHEETS STA. TO STA.

SCHEDULE OF QUANTITIES

ITEM DESCRIPTION	UNITS	TOTAL QTY
MAINTENANCE OF EXISTING TRAFFIC SIGNAL INSTALLATION	EACH	1
DETECTOR LOOP, TYPE I	FOOT	322
REMOVE EXISTING TRAFFIC SIGNAL EQUIPMENT	EACH	1
ACCESSIBLE PEDESTRIAN SIGNALS	EACH	2
RE-OPTIMIZE TRAFFIC SIGNAL SYSTEM LEVEL 1	EACH	1

REVISED SHEET 2/18/2025

F.A.U. RTE.	SECTION	COUNTY	TOTAL SHEETS	SHEET NO.
1321	FAU 1321 22 RS	*	75	54
* COOK & DUPAGE		CONTRACT NO. 62R58		
ILLINOIS		FED. AID PROJECT		

TS 21710
IDOT CENTRACS
FORMER ECON 89

FILE NAME: M4_201913 CHIL18-03-2500 IDOT FTE 190 - Various Traffic Signal DesignGraphics\WO 24-010_APS & Various tasks\62R58\CAD\62R58_Sheet_02b_IL 19 at E Frontage.dgn

Sam
Schwartz

200 S. WACKER
SUITE 1400
CHICAGO, IL 60606
TEL: (773) 305-0800

USER NAME = erica.salutz	DESIGNED - ERICA SALUTZ	REVISED - 02/10/2025
	DRAWN - ERICA SALUTZ	REVISED -
PLOT SCALE = 40,0000 ' / in.	CHECKED - PETER WOJTKIEWICZ	REVISED -
PLOT DATE = 2/11/2025	DATE - 01/21/2025	REVISED -

STATE OF ILLINOIS
DEPARTMENT OF TRANSPORTATION

TRAFFIC SIGNAL MODERNIZATION PLAN
IL RTE 19 (IRVING PARK RD) AT EB FRONTAGE ROAD

SCALE: SHEET OF SHEETS STA. TO STA.

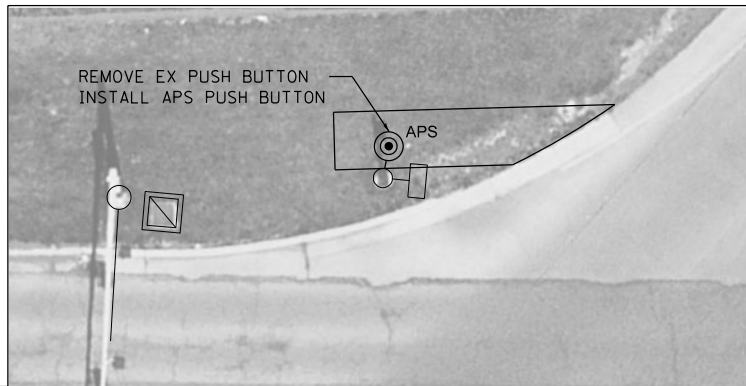
NOTES:

1. THE FOLLOWING ITEMS SHALL BE REMOVED BY THE CONTRACTOR AND SHALL BE DISPOSED OF BY THEM OUTSIDE THE RIGHT-OF-WAY AT THEIR EXPENSE. THE SALVAGE VALUE OF THE REMOVAL EQUIPMENT SHALL BE REFLECTED IN THE CONTRACT BID PRICE.

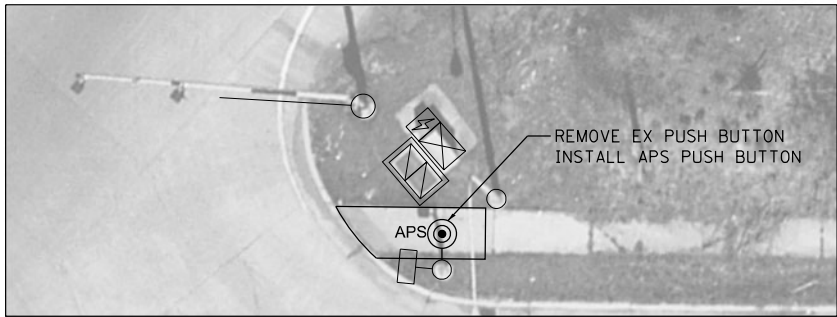
REMOVE 2 PEDESTRIAN PUSH-BUTTON
2. ALL EXISTING PEDESTRIAN PUSH-BUTTONS SHALL BE REMOVED.
3. CONTRACTOR SHALL PERFORM SIGNAL WORK IN SUCH A WAY AS TO MINIMIZE THE TIME THE EXISTING PEDESTRIAN EQUIPMENT IS INOPERATIONAL.
4. CONTRACTOR SHALL CONFIRM THE FINAL LOCATION OF THE PEDESTRIAN EQUIPMENT BEFORE INSTALLATION WITH THE TRAFFIC SIGNAL AREA ENGINEER.
5. DIMENSIONS SHOWN ARE FROM CENTER OF POST TO BACK OF CURB AND ARE APPROXIMATE AND PLACEMENT OF THE POST SHALL BE VERIFIED WITH THE ENGINEER PRIOR TO THE START OF WORK.
6. APS SHALL BE PLACED PARALLEL TO THE CORRESPONDING CROSSWALK.
7. STATIONS SHOW ON THE TRAFFIC SIGNAL PLAN ARE FROM RECORD DRAWINGS AND MAY NOT MATCH OTHER PLANS.
8. WHERE TRAFFIC SIGNAL EQUIPMENT WAS REMOVED AND THE EXISTING CABLE IS NOT BEING REUSED, THE EXISTING ELECTRICAL CABLE SHALL BE REMOVED FROM CONDUIT.
9. THE CONTRACTOR SHALL UTILIZE THE EXISTING UNIDUCT FOR THE PROPOSED LOOP DETECTORS.

NOTES (CONT'D):

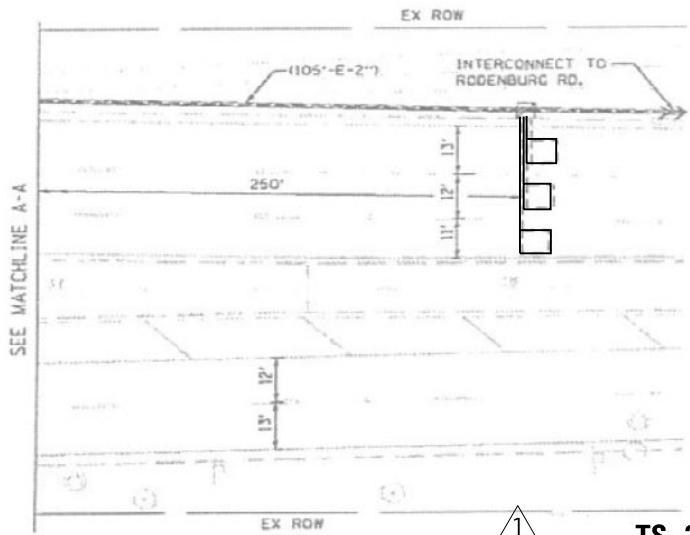
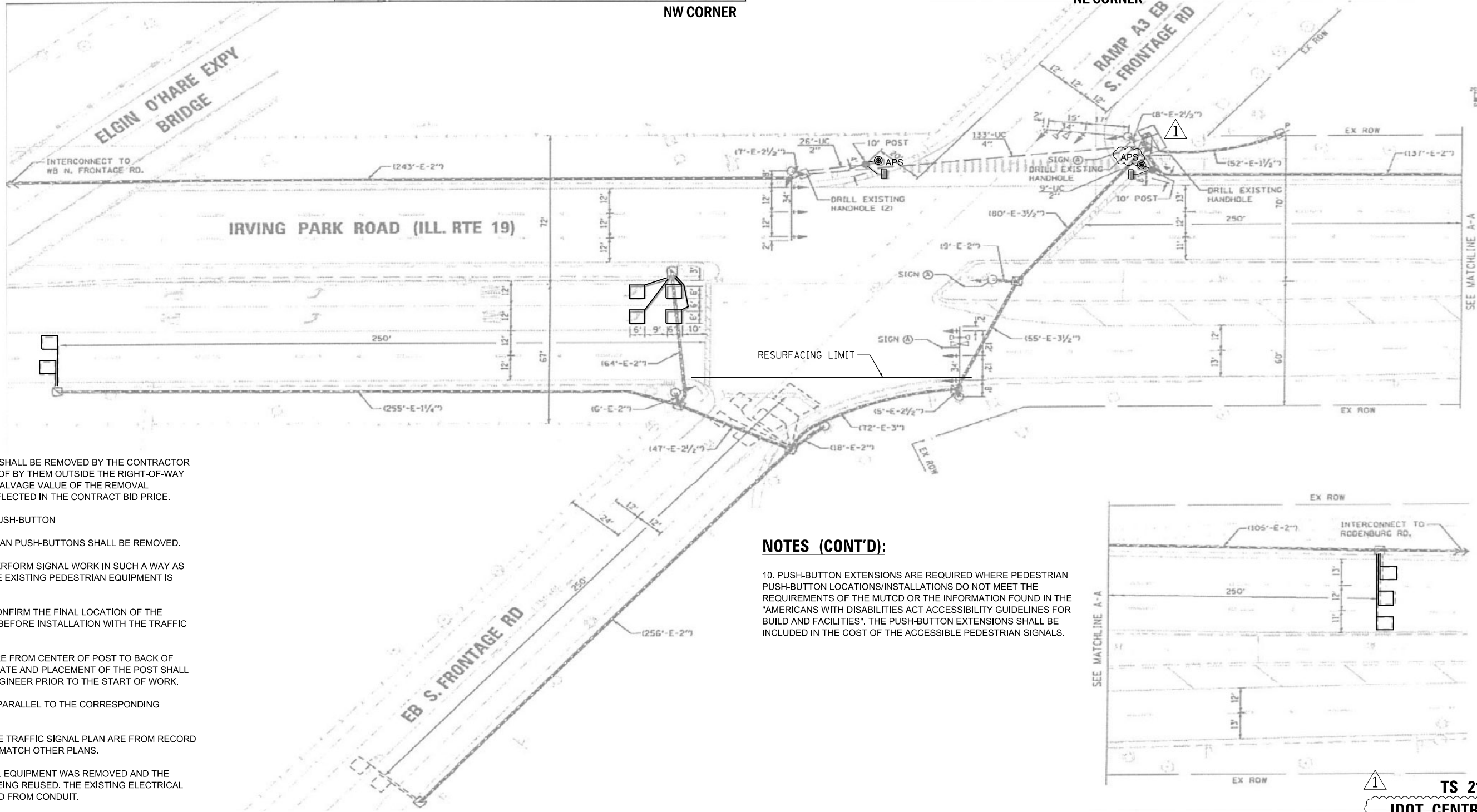
10. PUSH-BUTTON EXTENSIONS ARE REQUIRED WHERE PEDESTRIAN PUSH-BUTTON LOCATIONS/INSTALLATIONS DO NOT MEET THE REQUIREMENTS OF THE MUTCD OR THE INFORMATION FOUND IN THE "AMERICANS WITH DISABILITIES ACT ACCESSIBILITY GUIDELINES FOR BUILD AND FACILITIES". THE PUSH-BUTTON EXTENSIONS SHALL BE INCLUDED IN THE COST OF THE ACCESSIBLE PEDESTRIAN SIGNALS.



NW CORNER



NE CORNER

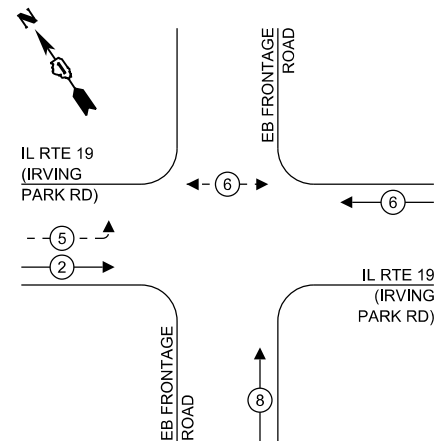


1 REVISED SHEET 2/18/2025

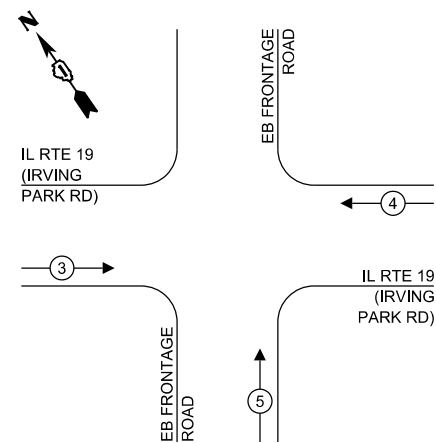
TS 21709
IDOT CENTRACS
FORMER ECON 89

F.A.U. RTE.	SECTION	COUNTY	TOTAL SHEETS	SHEET NO.
1321	FAU 1321 22 RS	*	75	55
* COOK & DUPAGE			CONTRACT NO. 62R58	
ILLINOIS		FED. AID PROJECT		

EXISTING CONTROLLER SEQUENCE



EXISTING EMERGENCY VEHICLE PREEMPTION SEQUENCE



TRAFFIC SIGNAL ELECTRICAL SERVICE REQUIREMENTS

TYPE	NO. OF LAMPS	LED WATTAGE	TOTAL WATTAGE
SIGNAL HEAD			
3 - SECTION	13	11	143
4 - SECTION	-	14	-
5 - SECTION	-	13	-
PROGRAMMABLE SIGNALS			
3 - SECTION	-	22	-
4 - SECTION	-	32	-
5 - SECTION	-	28	-
PED. SIGNAL	2	15	30
CONTROLLER	1	150	150
MASTER CONTROLLER	-	100	-
UPS	1	25	25
DETECTION RADAR	-	20	-
VIDEO	-	20	-
BLANK-OUT SIGN	-	25	-
NETWORK SWITCH II OR III	-	35	-
CELLULAR MODEM	-	15	-
TOTAL UPS SIZING =			348
UPS CHARGING	1	225	225
BATTERY HEATER MAT	1	180	180
CABINET HEATER	1	200	200
FLASHER	-	15	-
LED STREET NAME SIGN	-	120	-
LUMINAIRE	-	240	-
TOTAL SERVICE WIRE SIZING =			953

ENERGY COSTS TO:
ILLINOIS DEPT OF TRANSPORTATION
201 WEST CENTER COURT
SCHAUMBURG, IL 60196-1096

ENERGY SUPPLY:

CONTACT: NEW BUSINESS DEPT.

PHONE: (866) 639-3532

COMPANY: COMMONWEALTH EDISON

ACCOUNT NUMBER: 61783-02111

Sam Schwartz 200 S. WACKER
SUITE 1400
CHICAGO, IL 60606
TEL: (773) 305-0800

USER NAME	= erica.salutz
PLOT SCALE	= 40.0000 ' / in.
PLOT DATE	= 2/11/2025

DESIGNED - ERICA SALUTZ	REVISED - 02/10/2025
DRAWN - ERICA SALUTZ	REVISED -
CHECKED - PETER WOJTKIEWICZ	REVISED -
DATE - 01/21/2025	REVISED -

**STATE OF ILLINOIS
DEPARTMENT OF TRANSPORTATION**

**CABLE PLAN, PHASE DESIGNATION DIAGRAM, EMERGENCY VEHICLE
PREEMPTION SEQUENCE, AND SUMMARY OF QUANTITIES
IL RTE 19 (IRVING PARK RD) AT EB FRONTAGE ROAD**

CABLE PLAN

(NOT TO SCALE)

1 REVISED SHEET 2/18/2025

SCHEDULE OF QUANTITIES

ITEM DESCRIPTION	UNITS	TOTAL QTY
MAINTENANCE OF EXISTING TRAFFIC SIGNAL INSTALLATION	EACH	1
DETECTOR LOOP, TYPE I	FOOT	300
REMOVE EXISTING TRAFFIC SIGNAL EQUIPMENT	EACH	1
ACCESSIBLE PEDESTRIAN SIGNALS	EACH	2
RE-OPTIMIZE TRAFFIC SIGNAL SYSTEM LEVEL 1	EACH	1


1 TS 21709
IDOT CENTRACS
FORMER ECON 89

TS SHT NO. 16

FILE NAME: M:\2019\3 CH\18-03-5500 IDOT PTR 190 - Various Traffic Signal Design\Graphics\WO 24-010 APS & Various Tasks\62858\CAD\62858 Sheet 03b II 19 at E Frontage.dgn

FILE NAME: M:\2019\3 CH\18-03-5500 IDOT PTB 190 - Various Traffic Signal Design\Graphics\WO 24-010 APS & Various tasks\62R58\CAD\62R58 Sheet 04 IL 19 at Rodenburg.dgn

USER NAME	= erica.salutz
PLOT SCALE	= 40.0000 ' / in.
PLOT DATE	= 2/11/2025

REVISED	-	 02/10/2025
REVISED	-	
REVISED	-	
REVISED	-	

SCALE:	SHEET	OF	SHEETS	STA.	TO STA.
--------	-------	----	--------	------	---------

F.A.U. RTE.	SECTION	COUNTY	TOTAL SHEETS	SHEET NO.
1321	FAU 1321 22 RS	*	75	57
* COOK & DUPAGE		CONTRACT NO. 62R58		
ILLINOIS		FED. AID PROJECT		

IDOT CENTRACS
FORMER ECON 158

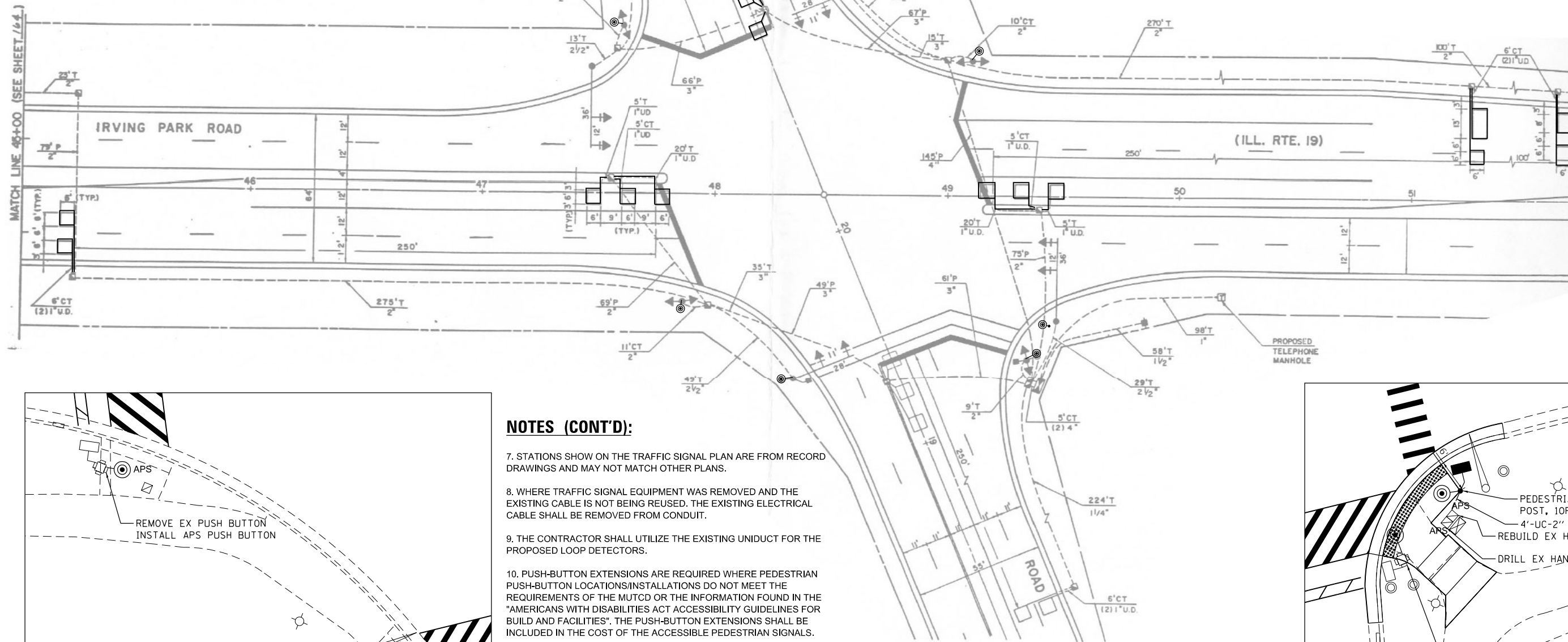
1. THE FOLLOWING ITEMS SHALL BE REMOVED BY THE CONTRACTOR AND SHALL BE DISPOSED OF BY THEM OUTSIDE THE RIGHT-OF-WAY AT THEIR EXPENSE. THE SALVAGE VALUE OF THE REMOVAL EQUIPMENT SHALL BE REFLECTED IN THE CONTRACT BID PRICE.
- REMOVE 4 PEDESTRIAN PUSH-BUTTON
2. ALL EXISTING PEDESTRIAN PUSH-BUTTONS SHALL BE REMOVED.
3. CONTRACTOR SHALL PERFORM SIGNAL WORK IN SUCH A WAY AS TO MINIMIZE THE TIME THE EXISTING PEDESTRIAN EQUIPMENT IS INOPERATIONAL.
4. CONTRACTOR SHALL CONFIRM THE FINAL LOCATION OF THE PEDESTRIAN EQUIPMENT BEFORE INSTALLATION WITH THE TRAFFIC SIGNAL AREA ENGINEER.
5. DIMENSIONS SHOWN ARE FROM CENTER OF POST TO BACK OF CURB AND ARE APPROXIMATE AND PLACEMENT OF THE POST SHALL BE VERIFIED WITH THE ENGINEER PRIOR TO THE START OF WORK.
6. APS SHALL BE PLACED PARALLEL TO THE CORRESPONDING CROSSWALK.

7. STATIONS SHOW ON THE TRAFFIC SIGNAL PLAN ARE FROM RECORD DRAWINGS AND MAY NOT MATCH OTHER PLANS.

8. WHERE TRAFFIC SIGNAL EQUIPMENT WAS REMOVED AND THE EXISTING CABLE IS NOT BEING REUSED, THE EXISTING ELECTRICAL CABLE SHALL BE REMOVED FROM CONDUIT.

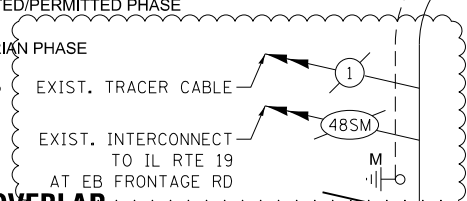
9. THE CONTRACTOR SHALL UTILIZE THE EXISTING UNIDUCT FOR THE PROPOSED LOOP DETECTORS.

10. PUSH-BUTTON EXTENSIONS ARE REQUIRED WHERE PEDESTRIAN PUSH-BUTTON LOCATIONS/INSTALLATIONS DO NOT MEET THE REQUIREMENTS OF THE MUTCD OR THE INFORMATION FOUND IN THE "AMERICANS WITH DISABILITIES ACT ACCESSIBILITY GUIDELINES FOR BUILD AND FACILITIES". THE PUSH-BUTTON EXTENSIONS SHALL BE INCLUDED IN THE COST OF THE ACCESSIBLE PEDESTRIAN SIGNALS.



TYPE	NO. OF LAMPS	LED WATTAGE	TOTAL WATTAGE
SIGNAL HEAD			
3 - SECTION	6	11	66
4 - SECTION	-	14	-
5 - SECTION	10	13	130
PROGRAMMABLE SIGNALS			
3 - SECTION	-	22	-
4 - SECTION	-	32	-
5 - SECTION	-	28	-
PED. SIGNAL	6	15	90
CONTROLLER	1	150	150
MASTER CONTROLLER	-	100	-
UPS	1	25	25
DETECTION RADAR	-	20	-
VIDEO	-	20	-
BLANK-OUT SIGN	-	25	-
NETWORK SWITCH II OR III	-	35	-
CELLULAR MODEM	-	15	-
TOTAL UPS SIZES =			461
UPS CHARGING	1	225	225
BATTERY HEATER MAT	1	180	180
CABINET HEATER	1	200	200
FLASHER	-	15	-
LED STREET NAME SIGN	-	120	-
LUMINAIRE	-	240	-
TOTAL SERVICE WIRE SIZING =			1066

OVERLAP LETTER	PERMISSIVE PHASE	PROTECTED PHASE
C	6	7



IL RTE 19
(IRVING PARK RD)

ITEM DESCRIPTION	UNITS	TOTAL QTY
UNDERGROUND CONDUIT, GALVANIZED STEEL, 2" DIA.	FOOT	4
MAINTENANCE OF EXISTING TRAFFIC SIGNAL INSTALLATION	EACH	1
ELECTRIC CABLE IN CONDUIT, SIGNAL NO. 14 2C	FOOT	233
ELECTRIC CABLE IN CONDUIT, SIGNAL NO. 14 3C	FOOT	247
ELECTRIC CABLE IN CONDUIT, EQUIPMENT GROUNDING CONDUCTOR, NO. 6 1C	FOOT	22
DRILL EXISTING HANDHOLE	EACH	1
PEDESTRIAN SIGNAL HEAD, LED, 1-FACE, BRACKET MOUNTED WITH COUNTDOWN TIMER	EACH	2
DETECTOR LOOP, TYPE I	FOOT	510
MODIFY EXISTING CONTROLLER	EACH	1
REMOVE EXISTING TRAFFIC SIGNAL EQUIPMENT	EACH	1
REBUILD EXISTING HANDHOLE	EACH	2
PEDESTRIAN SIGNAL POST, 10 FT.	EACH	1
ACCESSIBLE PEDESTRIAN SIGNALS	EACH	6
CONCRETE FOUNDATION, TYPE A 12-INCH DIAMETER	FOOT	4
RE-OPTIMIZE TRAFFIC SIGNAL SYSTEM LEVEL 1	EACH	1

1

1 REVISED SHEET 2/18/2025

FORMER ECON 158

FILE NAME: M:\ 2019\3 CH\18-03-5500 IDOT PTB 190 - Various Traffic Signal Design\WO 24-010 APS & Various tasks\62R58\CAD\62R58 Sheet 04 IL 19 at Rodenburg.dgn

Sam Schwartz
200 S. WACKER
SUITE 1400
CHICAGO, IL 60606
TEL: (773) 305-0800

USER NAME	= erica.salutz
PLOT SCALE	= 40.0000 ' / in.
PLOT DATE	= 2/11/2025

DESIGNED	-	ERICA SALUTZ
DRAWN	-	ERICA SALUTZ
CHECKED	-	PETER WOJTKIEWICZ
DATE	-	01/21/2025

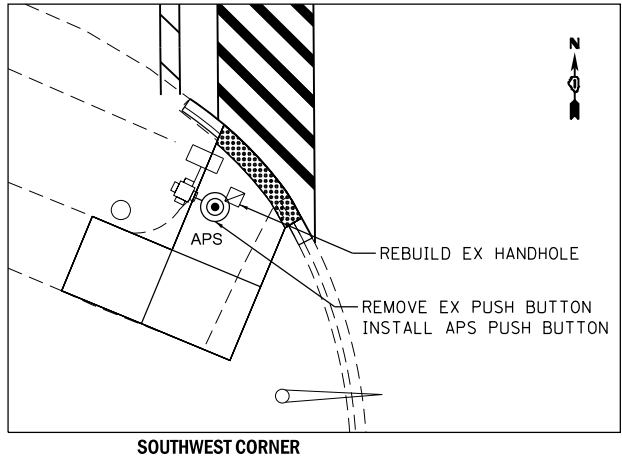
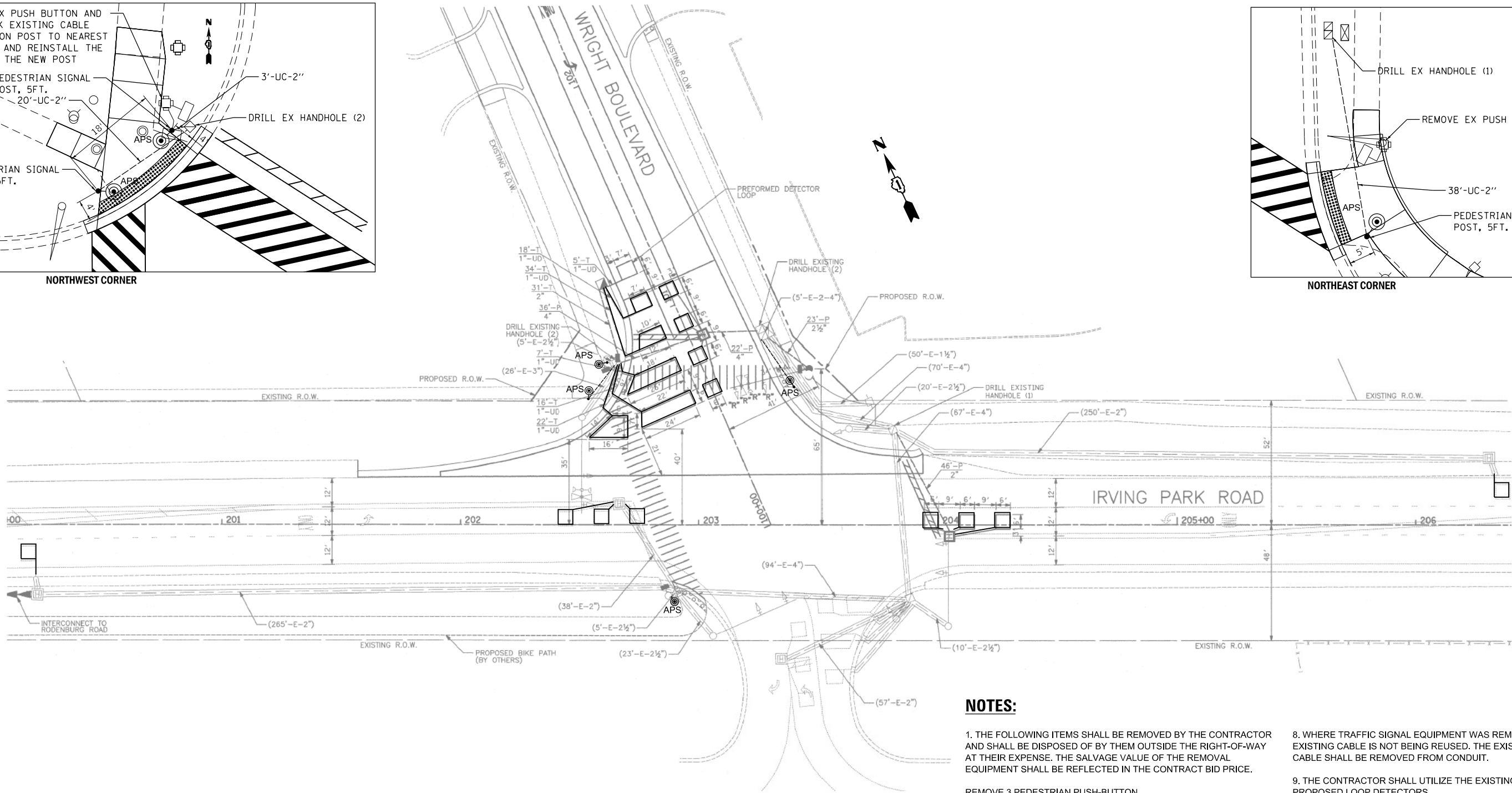
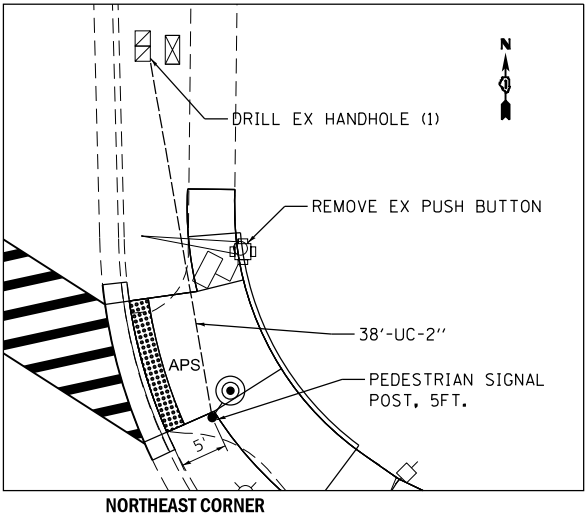
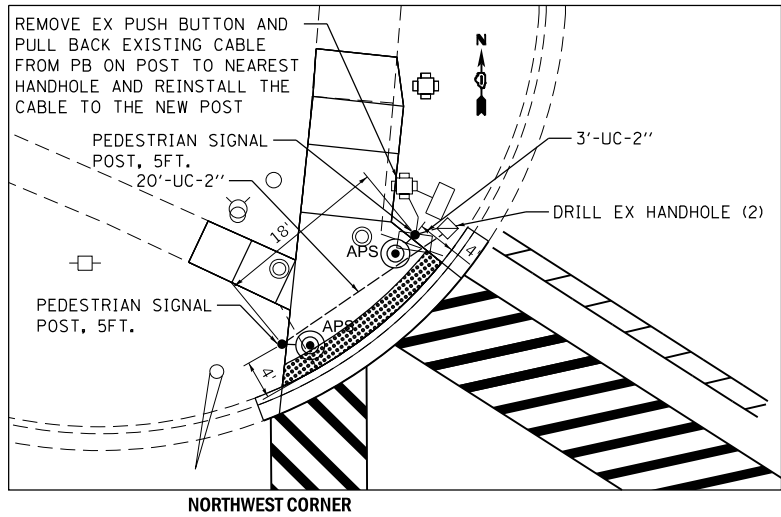
REVISED	-	<u>1</u> 02/10/2025
REVISED	-	
REVISED	-	
REVISED	-	

**STATE OF ILLINOIS
DEPARTMENT OF TRANSPORTATION**

**CABLE PLAN, PHASE DESIGNATION DIAGRAM, EMERGENCY VEHICLE
PREEMPTION SEQUENCE, AND SUMMARY OF QUANTITIES
IL RTE 19 (IRVING PARK RD) AT RODENBURG RD**

SCALE:	SHEET	OF	SHEETS	STA.	TO STA.
--------	-------	----	--------	------	---------

F.A.U. RTE.	SECTION	COUNTY	TOTAL SHEETS	SHEET NO.
1321	FAU 1321 22 RS	*	75	58
* COOK & DUPAGE		CONTRACT NO. 62R58		
ILLINOIS		FED. AID PROJECT		



NOTES:

1. THE FOLLOWING ITEMS SHALL BE REMOVED BY THE CONTRACTOR AND SHALL BE DISPOSED OF BY THEM OUTSIDE THE RIGHT-OF-WAY AT THEIR EXPENSE. THE SALVAGE VALUE OF THE REMOVAL EQUIPMENT SHALL BE REFLECTED IN THE CONTRACT BID PRICE.
2. ALL EXISTING PEDESTRIAN PUSH-BUTTONS SHALL BE REMOVED.
3. CONTRACTOR SHALL PERFORM SIGNAL WORK IN SUCH A WAY AS TO MINIMIZE THE TIME THE EXISTING PEDESTRIAN EQUIPMENT IS INOPERATIONAL.
4. CONTRACTOR SHALL CONFIRM THE FINAL LOCATION OF THE PEDESTRIAN EQUIPMENT BEFORE INSTALLATION WITH THE TRAFFIC SIGNAL AREA ENGINEER.
5. DIMENSIONS SHOWN ARE FROM CENTER OF POST TO BACK OF CURB AND ARE APPROXIMATE AND PLACEMENT OF THE POST SHALL BE VERIFIED WITH THE ENGINEER PRIOR TO THE START OF WORK.
6. APS SHALL BE PLACED PARALLEL TO THE CORRESPONDING CROSSWALK.
7. STATIONS SHOW ON THE TRAFFIC SIGNAL PLAN ARE FROM RECORD DRAWINGS AND MAY NOT MATCH OTHER PLANS.
8. WHERE TRAFFIC SIGNAL EQUIPMENT WAS REMOVED AND THE EXISTING CABLE IS NOT BEING REUSED, THE EXISTING ELECTRICAL CABLE SHALL BE REMOVED FROM CONDUIT.
9. THE CONTRACTOR SHALL UTILIZE THE EXISTING UNIDUCT FOR THE PROPOSED LOOP DETECTORS.
10. PUSH-BUTTON EXTENSIONS ARE REQUIRED WHERE PEDESTRIAN PUSH-BUTTON LOCATIONS/INSTALLATIONS DO NOT MEET THE REQUIREMENTS OF THE MUTCD OR THE INFORMATION FOUND IN THE "AMERICANS WITH DISABILITIES ACT ACCESSIBILITY GUIDELINES FOR BUILD AND FACILITIES". THE PUSH-BUTTON EXTENSIONS SHALL BE INCLUDED IN THE COST OF THE ACCESSIBLE PEDESTRIAN SIGNALS.

REMOVE 3 PEDESTRIAN PUSH-BUTTON

1 REVISED SHEET 2/18/2025

Sam Schwartz
200 S. WACKER
SUITE 1400
CHICAGO, IL 60606
TEL: (773) 305-0800

USER NAME = erica.salutz	DESIGNED - ERICA SALUTZ	REVISED - 02/10/2025
DRAWN - ERICA SALUTZ	REVIS	
PLOT SCALE = 40,0000 ' / in.	CHECKED - PETER WOJTKIEWICZ	REVISED -
PLOT DATE = 2/11/2025	DATE - 01/21/2025	REVISED -

STATE OF ILLINOIS
DEPARTMENT OF TRANSPORTATION

TRAFFIC SIGNAL MODERNIZATION PLAN
IL RTE 19 (IRVING PARK RD) AT WRIGHT BLVD

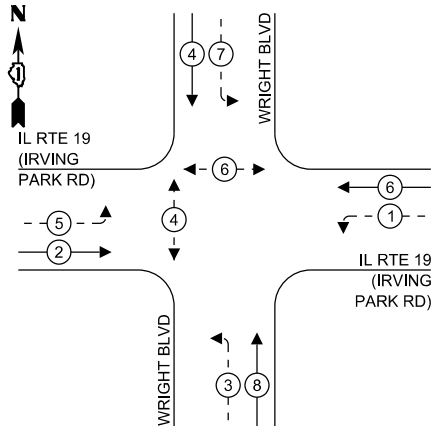
SCALE: SHEET OF SHEETS STA. TO STA.

F.A.U. RTE.	SECTION	COUNTY	TOTAL SHEETS	SHEET NO.
1321	FAU 1321 22 RS	*	75	59
* COOK & DUPAGE		CONTRACT NO. 62R58		
		ILLINOIS FED. AID PROJECT		

TS 7637
IDOT CENTRACS
FORMER ECON 158

FILE NAME: MS_201913_Civil18-03-15500 DDT FTE 190 - Various Traffic Signal DesignGraphicsW0 24.010_APS & Various tasks626258/CAD/62R58_Sheet_05_IL 19 at Wright.dgn

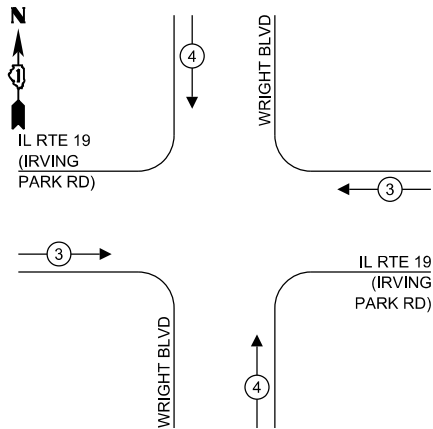
EXISTING CONTROLLER SEQUENCE



LEGEND:

- ← * → PROTECTED PHASE
- ← - * - → PROTECTED/PERMITTED PHASE
- ← * → PEDESTRIAN PHASE
- ← * OL → OVERLAP

EXISTING EMERGENCY VEHICLE PREEMPTION SEQUENCE



TRAFFIC SIGNAL ELECTRICAL SERVICE REQUIREMENTS

TYPE	NO. OF LAMPS	LED WATTAGE	TOTAL WATTAGE
SIGNAL HEAD			
3 - SECTION	4	11	44
4 - SECTION	-	14	-
5 - SECTION	8	13	104
PROGRAMMABLE SIGNALS			
3 - SECTION	-	22	-
4 - SECTION	-	32	-
5 - SECTION	-	28	-
PED. SIGNAL	4	15	60
CONTROLLER	1	150	150
MASTER CONTROLLER	-	100	-
UPS	1	25	25
DETECTION RADAR	-	20	-
VIDEO	-	20	-
BLANK-OUT SIGN	-	25	-
NETWORK SWITCH II OR III	-	35	-
CELLULAR MODEM	-	15	-
TOTAL UPS SIZING =			383
UPS CHARGING	1	225	225
BATTERY HEATER MAT	1	180	180
CABINET HEATER	1	200	200
FLASHER	-	15	-
LED STREET NAME SIGN	-	120	-
LUMINAIRE	-	240	-
TOTAL SERVICE WIRE SIZING =			988

ENERGY COSTS TO:
VILLAGE OF SCHAUMBURG
101 SCHAUMBURG COURT
SCHAUMBURG, IL 60193-1878
ENERGY SUPPLY:
CONTACT: NEW BUSINESS DEPT.
PHONE: (866) 639-3532
COMPANY: COMMONWEALTH EDISON
ACCOUNT NUMBER: 61783-02111

Sam Schwartz
200 S. WACKER
SUITE 1400
CHICAGO, IL 60606
TEL: (773) 305-0800

USER NAME = erica.salutz
DESIGNED - ERICA SALUTZ
DRAWN - ERICA SALUTZ
PLOT SCALE = 40,0000 ' / in.
PLOT DATE = 2/11/2025

DESIGNED - ERICA SALUTZ
CHECKED - PETER WOJTKIEWICZ
DATE - 01/21/2025

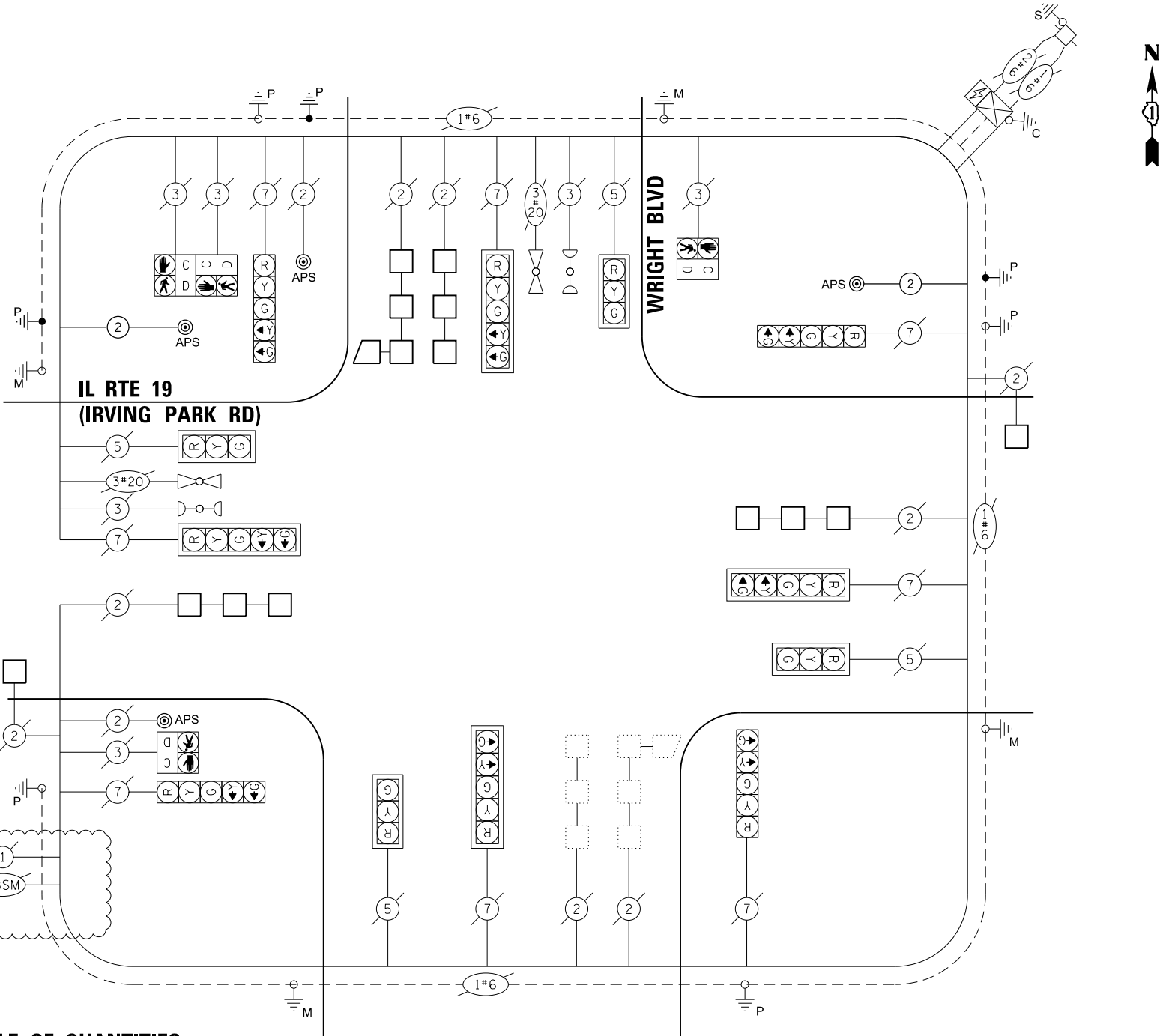
REVISED - 02/10/2025
REVISED -
REVISED -
REVISED -

STATE OF ILLINOIS
DEPARTMENT OF TRANSPORTATION

CABLE PLAN, PHASE DESIGNATION DIAGRAM, EMERGENCY VEHICLE
PREEMPTION SEQUENCE, AND SUMMARY OF QUANTITIES
IL RTE 19 (IRVING PARK RD) AT WRIGHT BLVD

SCALE: SHEET OF SHEETS STA. TO STA.

F.A.U. RTE.	SECTION	COUNTY	TOTAL SHEETS	SHEET NO.
1321	FAU 1321 22 RS	*	75	60
* COOK & DUPAGE		CONTRACT NO. 62R58		
ILLINOIS		FED. AID PROJECT		



SCHEDULE OF QUANTITIES

ITEM DESCRIPTION	UNITS	TOTAL QTY
UNDERGROUND CONDUIT, GALVANIZED STEEL, 2" DIA.	FOOT	61
MAINTENANCE OF EXISTING TRAFFIC SIGNAL INSTALLATION	EACH	1
ELECTRIC CABLE IN CONDUIT, SIGNAL NO. 14 2C	FOOT	197
ELECTRIC CABLE IN CONDUIT, EQUIPMENT GROUNDING CONDUCTOR, NO. 6 1C	FOOT	94
DRILL EXISTING HANDHOLE	EACH	3
DETECTOR LOOP, TYPE I	FOOT	624
MODIFY EXISTING CONTROLLER	EACH	1
REMOVE ELECTRIC CABLE FROM CONDUIT	FOOT	28
REMOVE AND REINSTALL ELECTRIC CABLE FROM CONDUIT	FOOT	5
REMOVE EXISTING TRAFFIC SIGNAL EQUIPMENT	EACH	1
REBUILD EXISTING HANDHOLE	EACH	1
PEDESTRIAN SIGNAL POST, 5 FT.	EACH	3
ACCESSIBLE PEDESTRIAN SIGNALS	EACH	4
CONCRETE FOUNDATION, TYPE A 12-INCH DIAMETER	FOOT	12
RE-OPTIMIZE TRAFFIC SIGNAL SYSTEM LEVEL 1	EACH	1

CABLE PLAN
(NOT TO SCALE)

REVISED SHEET 2/18/2025

TS 7637
IDOT CENTRACS
FORMER ECON 158



ENERGY COSTS TO:
ILLINOIS DEPT OF TRANSPORTATION
201 CENTER COURT
SCHAUMBURG, IL 60196-1096

ENERGY SUPPLY:

CONTACT: NEW BUSINESS DEPT.
PHONE: (866) 639-3532
COMPANY: COMMONWEALTH EDISON

ACCOUNT NUMBER:

SCHEDULE OF QUANTITIES

SCALE:	SHEET	OF	SHEETS	STA.	TO STA.
--------	-------	----	--------	------	---------

F.A.U. RTE.	SECTION	COUNTY	TOTAL SHEETS	SHEET NO.
1321	FAU 1321 22 RS	*	75	61A
* COOK & DUPAGE		CONTRACT NO. 62R58		
ILLINOIS		FED. AID PROJECT		

Sam Schwartz 200 S. WACKER
SUITE 1400
CHICAGO, IL 60606
TEL: (773) 305-0800