

STATE OF ILLINOIS
DEPARTMENT OF TRANSPORTATION
DIVISION OF HIGHWAYS
PROPOSED
HIGHWAY PLANS

F.A.P. RTE.	SECTION	COUNTY	TOTAL SHEETS	SHEET NO.
307	126RS-4	DEKALB	18	1
		ILLINOIS	CONTRACT NO. 66P49	

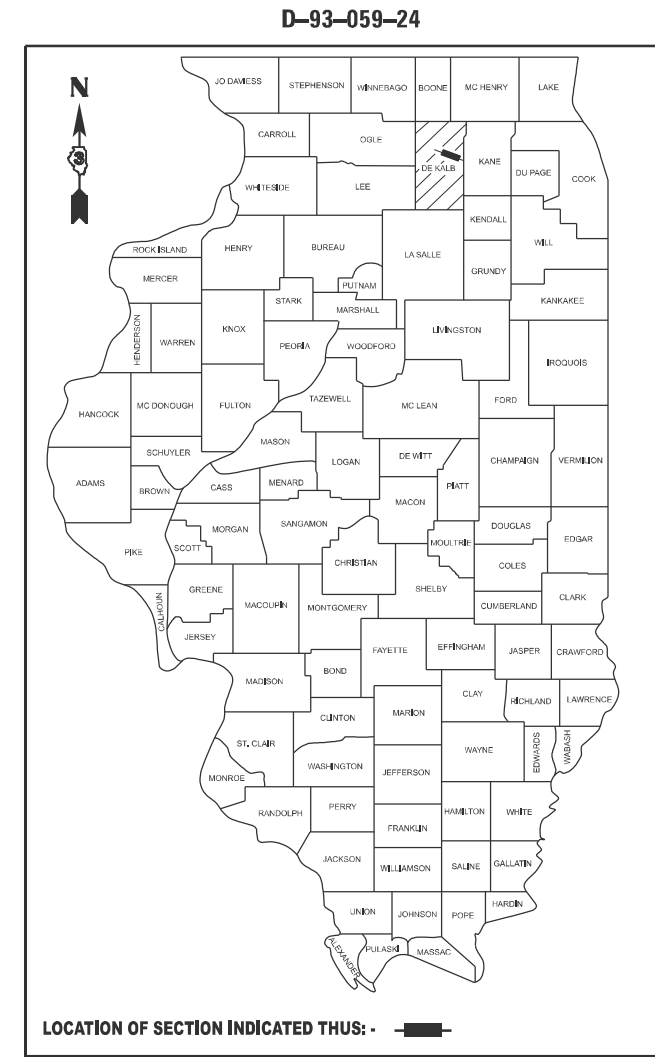
INDEX OF SHEETS

- 1 COVER SHEET
- 2 GENERAL NOTES
- 3 LINE DIAGRAM
- 4-7 SUMMARY OF QUANTITIES
- 8-9 TYPICAL SECTIONS
- 11-12 SCHEDULES
- 13-18 DETAILS

LIST OF ILLINOIS DOT HIGHWAY STANDARDS

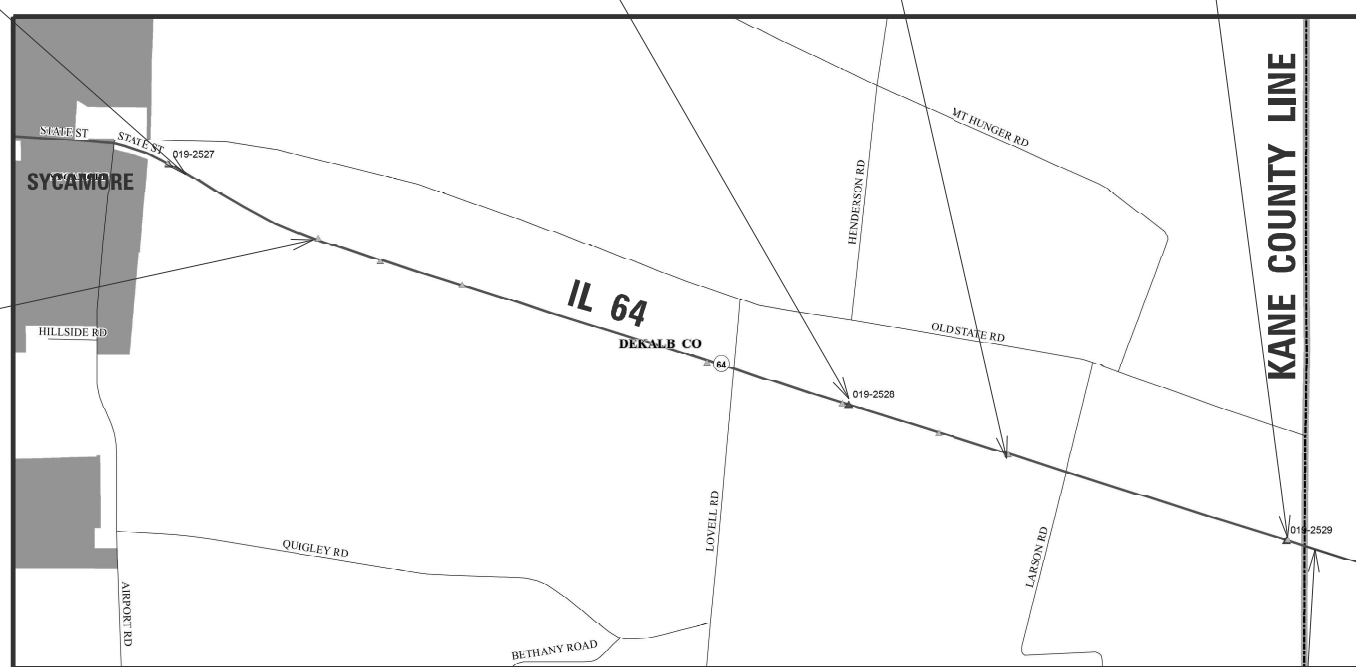
- 000001-08 STANDARD SYMBOLS, ABBREVIATIONS AND PATTERNS
- 001001-02 AREAS OF REINFORCEMENT BARS
- 001006 DECIMAL OF AN INCH AND OF A FOOT
- 442101-09 CLASS B PATCHES
- 442201-03 CLASS C AND D PATCHES
- 601101-02 CONCRETE HEADWALL FOR PIPE UNDERDRAINS
- 630001-13 STEEL PLATE BEAM GUARDRAIL
- 630106-02 LONG-SPAN GUARDRAIL OVER CULVERT
- 635001-02 DELINEATORS
- 701001-02 OFF-ROAD OPERATIONS 2L, 2W, MORE THAN 15' AWAY
- 701006-05 OFF-ROAD OPERATIONS 2L, 2W, 15' TO 24" FROM PAVEMENT EDGE
- 701201-05 LANE CLOSURE, 2L, 2W, DAY ONLY, FOR SPEEDS ≥ 45 MPH
- 701301-04 LANE CLOSURE, 2L, 2W, SHORT TIME OPERATIONS
- 701306-04 LANE CLOSURE, 2L, 2W, SLOW MOVING OPERATIONS DAY ONLY, FOR SPEEDS ≥ 45 MPH
- 701311-03 LANE CLOSURE, 2L, 2W, MOVING OPERATIONS - DAY ONLY
- 701901-10 TRAFFIC CONTROL DEVICES
- 780001-05 TYPICAL PAVEMENT MARKINGS
- 781001-04 TYPICAL APPLICATIONS RAISED REFLECTIVE PAVEMENT MARKERS

FAP ROUTE 307 (IL 64)
SECTION 126RS-4
PROJECT:
MILLING & RESURFACING (DESIGNED OVERLAY)
DEKALB COUNTY



IMPROVEMENTS BEGINS
1021 FT EAST OF AIRPORT RD
STA. 112 + 00

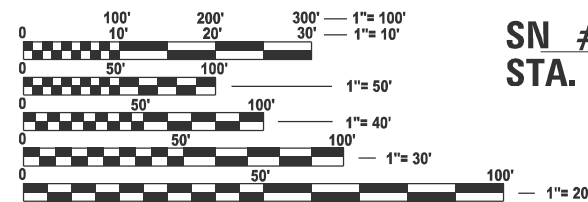
SN 019-2528
STA. 203 + 00 **SN #1344**
STA. 226 + 00 **SN 019-2519**
STA. 264 + 00



SN #1338
STA. 131 + 38

IMPROVEMENTS ENDS
120 FT EAST OF KANE COUNTY LINE
STA. 267 + 59

GROSS LENGTH = 15,559 FT. = 2.946 MILE
 NET LENGTH = 15,559 FT. = 2.946 MILE



FULL SIZE PLANS HAVE BEEN PREPARED USING STANDARD ENGINEERING SCALES. REDUCED SIZED PLANS WILL NOT CONFORM TO STANDARD SCALES. IN MAKING MEASUREMENTS ON REDUCED PLANS, THE ABOVE SCALES MAY BE USED.

J.U.L.I.E.
 JOINT UTILITY LOCATION INFORMATION FOR EXCAVATION
 1-800-892-0123
 OR 811

PROJECT ENGINEER: JOSEPH KANNEL P.E.
UNIT CHIEF: MOHAMED YOUSIF
DISTRICT 3 NO. (815) 434-6131
CONTRACT NO. 66P49

FUNCTIONAL CLASSIFICATION-MINOR
ARTERIAL (RURAL)
 2023 ADT = 5450
 PV = 87% SU = 7% MU = 6%

STATE OF ILLINOIS
 DEPARTMENT OF TRANSPORTATION

SUBMITTED December 12, 2024

Trisha Thompson
 REGIONAL ENGINEER

January 31, 2025
Scott E. [Signature]
 ENGINEER OF DESIGN AND ENVIRONMENT

January 31, 2025
[Signature]
 DIRECTOR OF HIGHWAYS PROJECT IMPLEMENTATION

PRINTED BY THE AUTHORITY
OF THE STATE OF ILLINOIS

GENERAL NOTES

THE HMA SURFACE OF ALL MAILBOX TURNOUTS, PRIVATE ENTRANCES, COMMERCIAL ENTRANCES, AND SIDE ROADS SHALL BE MADE NEATLY, IN A WORKMANLIKE MANNER, AND SHALL ACCURATELY CONFORM TO THE SHAPES AND DIMENSIONS SHOWN ON THE PLAN DETAILS. IF REQUIRED BY THE ENGINEER, THE CONTRACTOR SHALL SAW CUT THE HMA SURFACE TO CONFORM TO THE SHAPES AND DIMENSIONS SHOWN ON THE PLAN DETAILS. THIS WORK WILL BE INCLUDED IN THE COST OF THE HMA SURFACE.

EXCEPT AS NOTED ON THE PLANS, PAVEMENT GRADES SHOWN ARE AT THE TOP OF PAVEMENT SURFACES.

BEFORE ORDERING PIPE CULVERTS OR PIPE DRAINS, THE CONTRACTOR SHALL CONSULT THE ENGINEER FOR EXACT LENGTHS.

THE ENGINEER WILL BE THE SOLE JUDGE CONCERNING CURING TIME FOR THE VARIOUS HMA LIFTS.

THE FINISHED EARTHWORK SHALL HAVE A VEGETATION SUSTAINING SOIL COVERING THE TOP FOUR INCHES IN AREAS TO BE SEEDED OR SODDED. THE VEGETATION SUSTAINING SOIL REQUIRED WILL NOT BE PAID FOR SEPARATELY BUT WILL BE INCLUDED IN THE COST OF FURNISHED EXCAVATION (SPECIAL).

ALL ELEVATIONS REFERRING TO U.S.G.S. MEAN SEA LEVEL DATUM.

THE FOLLOWING RATES OF APPLICATION HAVE BEEN USED IN CALCULATING PLAN QUANTITIES:

GRANULAR MATERIALS	2.05	TONS / CU YD
HMA RESURFACING	112	LBS / SQ YD / IN
SHORT TERM PAVEMENT MARKING	10	FT /100 FT OF APPLICATION
BINDER (HAND METHOD)	0.0005	TONS / SQ YD

ALL DAMAGE TO DEPARTMENT OWNED UNDERGROUND FACILITIES, CAUSED BY THE CONTRACTOR SHALL BE REPAIRED TO THE SATISFACTION OF THE ENGINEER AND AT NO EXPENSE TO THE DEPARTMENT. THIS SHALL INCLUDE ALL TEMPORARY REPAIRS REQUIRED TO KEEP THE FACILITY OPERATIONAL WHILE MATERIAL IS BEING OBTAINED TO MAKE PERMANENT REPAIRS. SPlicing OF ELECTRIC CABLE WILL NOT BE ALLOWED. ELECTRIC CABLE SHALL BE REPLACED FROM POLE TO POLE OR CONTROLLER.

MEMBERS OF JULIE KNOWN TO BE WITHIN THE LIMTS OF THE IMPROVEMENT ARE: COMED, FRONTIER, EVERSTREAM, GUARDIAN PIPELINE, SYCAMORE CITY OF DEKALB CO. HWY DEPT.

THE CONTRACTOR SHALL CONTACT JULIE ATLEAST 48 HOURS PRIOR TO EXCAVATION TO DETERMINE WHICH UTILITES ARE IN THE AREA

COMMITMENTS

None

HMA MIXTURE REQUIREMENT TABLE

LOCATIONS:	ENTIRE PROJECT	ENTIRE PROJECT	ENTIRE PROJECT
MIXTURE USE(S):	HMA BINDER	HMA SURFACE	HMA INCIDENTAL
BINDER GRADE (PG):	PG 64-22	PG 64-22	PG 64-22
DESIGN AIR VOIDS:	4.0% @ N50	4.0% @ N50	4.0% @ N50
MIXTURE COMPOSITION: (MIXTURE GRADATION)	IL 19.0	IL 9.5	IL 9.5
FRICITION AGGREGATE:		MIXTURE D	MIXTURE D
MIXTURE WEIGHT:	112.0 LB/SY/IN	112.0 LB/SY/IN	112.0 LB/SY/IN
QUALITY MANAGEMENT PROGRAM:	QCP	QCP	QCQA
SUBLOT SIZE:	1000 TONS	1000 TONS	NA
DENSITY TEST METHOD:	CORES	CORES	SATISFACTION OF ENGINEER
MATERIAL TRANSFER DEVICE (REQUIRED):	YES	YES	NO

66P49 - IL 64 FROM SYCAMORE TO THE KANE CO. LINE

STATE OF ILLINOIS
DEPARTMENT OF TRANSPORTATION
DISTRICT THREE
AS BUILT INFORMATION

SUPERVISING CONSTRUCTION FIELD ENGINEER

RESIDENT ENGINEER / TECHNICIAN

START & END DATES
OF CONSTRUCTION:

INSPECTORS:

MODEL: Default
FILE NAME: c:\p\work\pwwork\illinois.gov_boudie.shan@d0980c49d366P49-SHT-COVER.dgn

USER NAME = Boudie,Shan	DESIGNED -	REVISED -
	DRAWN -	REVISED -
	CHECKED -	REVISED -
PLOT DATE = 12/10/2024	DATE -	REVISED -

STATE OF ILLINOIS
DEPARTMENT OF TRANSPORTATION

GENERAL NOTES

SCALE: SHEET OF SHEETS STA. TO STA.

F.A.P RTE.	SECTION	COUNTY	TOTAL SHEETS	SHEET NO.
307	126RS-4	DEKALB	18	2
CONTRACT NO. 66P49				
ILLINOIS FED. AID PROJECT				

SYCAMORE

US 64 IMPROVEMENT BEGINS
1021 FT EAST OF AIRPORT RD
STA. 112 + 00

AIRPORT RD

#1338
STA. 131 + 38

#1340
STA. 151 + 00

IL 64

SN 019-2528
STA. 203 + 00

#1339
STA. 140 + 00

SN 019-2529
STA. 264 + 00

#1341
STA. 184 + 40

LOVELL RD

#1343
STA. 216 + 22

#1344
STA. 226 + 00

LARSON RD

DEKALB COUNTY
KANE COUNTY

W COUNTY LINE ROAD

US 64 IMPROVEMENT ENDS
120 FT EAST OF KANE COUNTY LINE
STA. 267 + 59



MODEL: D:\data\...
 FILE NAME: ...

USER NAME = Boudle,Shan	DESIGNED -	REVISED -
	DRAWN -	REVISED -
PLOT SCALE = \$SCALE\$	CHECKED -	REVISED -
PLOT DATE = 12/11/2024	DATE -	REVISED -

STATE OF ILLINOIS
DEPARTMENT OF TRANSPORTATION

IL 64 LINE DIAGRAM

SCALE: SHEET OF SHEETS STA. TO STA.

F.A.P. RTE.	SECTION	COUNTY	TOTAL SHEETS	SHEET NO.
307	126RS-4	DEKALB	18	3
CONTRACT NO. 66P49				
ILLINOIS		FED. AID PROJECT		

CODE NO.	ITEM	UNIT	TOTAL QUANTITY	CONSTR. CODE	
				100% STATE	
				ROADWAY	
				0005	RURAL
20200100	EARTH EXCAVATION	CU YD	214.6	214.6	
20300100	CHANNEL EXCAVATION	CU YD	20	20	
21400100	GRADING AND SHAPING DITCHES	FOOT	1450	1450	
25000210	SEEDING, CLASS 2A	ACRE	0.75	0.75	
25000400	NITROGEN FERTILIZER NUTRIENT	POUND	67.5	67.5	
25000500	PHOSPHORUS FERTILIZER NUTRIENT	POUND	67.5	67.5	
25000600	POTASSIUM FERTILIZER NUTRIENT	POUND	67.5	67.5	
25100630	EROSION CONTROL BLANKET	SQ YD	3630	3630	
40600290	BITUMINOUS MATERIALS (TACK COAT)	POUND	34805	34805	
40600370	LONGITUDINAL JOINT SEALANT	FOOT	47618	47618	
40600400	MIXTURE FOR CRACKS, JOINTS, AND FLANGEWAYS	TON	15	15	
40600405	MATERIAL TRANSFER DEVICE	TON	10573	10573	
40600900	HOT-MIX ASPHALT BINDER COURSE (HAND METHOD), N50	TON	25	25	
40600990	TEMPORARY RAMP	SQ YD	509	509	

MODEL: D:\data\...
 FILE NAME: ...

USER NAME = Boudle,Shan	DESIGNED -	REVISED -
PLOT SCALE = \$SCALE\$	CHECKED -	REVISED -
PLOT DATE = 12/18/2024	DATE -	REVISED -

STATE OF ILLINOIS
DEPARTMENT OF TRANSPORTATION

500			
SCALE:	SHEET	OF	SHEETS
	STA.		TO STA.

F.A.P. RTE.	SECTION	COUNTY	TOTAL SHEETS	SHEET NO.
307	126RS-4	DEKALB	18	4
CONTRACT NO. 66P49				
ILLINOIS FED. AID PROJECT				

CODE NO.	ITEM	UNIT	TOTAL QUANTITY	CONSTR. CODE
				100% STATE
				ROADWAY
				0005
				RURAL
40603080	HOT-MIX ASPHALT BINDER COURSE, IL-19.0, N50	TON	6344	6344
40604060	HOT-MIX ASPHALT SURFACE COURSE, IL-9.5, MIX "D", N50	TON	4229	4229
40800050	INCIDENTAL HOT-MIX ASPHALT SURFACING	TON	178	178
44000164	HOT-MIX ASPHALT SURFACE REMOVAL, 3 3/4"	SQ YD	50345	50345
44201729	CLASS D PATCHES, TYPE II, 7 INCH	SQ YD	130.3	130.3
44201753	CLASS D PATCHES, TYPE II, 9 INCH	SQ YD	158.2	158.2
44201914	CLASS D PATCHES, TYPE II, 22 INCH	SQ YD	93	93
48102100	AGGREGATE WEDGE SHOULDER, TYPE B	TON	1184	1184
60905305	BOX CULVERTS TO BE CLEANED	FOOT	126	126
* 63000001	STEEL PLATE BEAM GUARDRAIL, TYPE A, 6 FOOT POSTS	FOOT	1200	1200
* 63000350	LONG-SPAN GUARDRAIL OVER CULVERT, 12 FT 6 IN SPAN	FOOT	100	100
* 63100167	TRAFFIC BARRIER TERMINAL, TYPE 1 (SPECIAL) TANGENT	EACH	16	16
63200310	GUARDRAIL REMOVAL	FOOT	1049	1049
63500105	DELINEATORS	EACH	15	15

*= SPECIALTY ITEM

MODEL: D:\data\...
 FILE NAME: ...

USER NAME = Boudle,Shan	DESIGNED -	REVISED -
	DRAWN -	REVISED -
PLOT SCALE = \$SCALE\$	CHECKED -	REVISED -
PLOT DATE = 12/18/2024	DATE -	REVISED -

**STATE OF ILLINOIS
DEPARTMENT OF TRANSPORTATION**

SOQ

SCALE: SHEET OF SHEETS STA. TO STA.

F.A.P. RTE.	SECTION	COUNTY	TOTAL SHEETS	SHEET NO.
307	126RS-4	DEKALB	18	5
CONTRACT NO. 66P49				
ILLINOIS FED. AID PROJECT				

CODE NO.	ITEM	UNIT	TOTAL QUANTITY	CONSTR. CODE	
				100% STATE	
				ROADWAY	
				0005	RURAL
67000400	ENGINEER'S FIELD OFFICE, TYPE A	CAL MO	3	3	
67100100	MOBILIZATION	L SUM	1	1	
70100450	TRAFFIC CONTROL AND PROTECTION, STANDARD 701201	L SUM	1	1	
70100460	TRAFFIC CONTROL AND PROTECTION, STANDARD 701306	L SUM	1	1	
70300100	SHORT TERM PAVEMENT MARKING	FOOT	1564	1564	
70300150	SHORT TERM PAVEMENT MARKING REMOVAL	SQ FT	521	521	
* 72501000	TERMINAL MARKER - DIRECT APPLIED	EACH	28	28	
* 78000100	THERMOPLASTIC PAVEMENT MARKING - LETTERS AND SYMBOLS	SQ FT	78	78	
* 78000500	THERMOPLASTIC PAVEMENT MARKING - LINE 8"	FOOT	266	266	
* 78000600	THERMOPLASTIC PAVEMENT MARKING - LINE 12"	FOOT	260	260	
* 78004720	PREFORMED PLASTIC PAVEMENT MARKING, TYPE D - STANDARD - LINE 24"	FOOT	43	43	
* 78009004	MODIFIED URETHANE PAVEMENT MARKING - LINE 4"	FOOT	69600	69600	
* 78009006	MODIFIED URETHANE PAVEMENT MARKING - LINE 6"	FOOT	7224	7224	
* 78011000	GROOVING FOR RECESSED PAVEMENT MARKING, LETTERS AND SYMBOLS	SQ FT	78	78	

* = SPECIALTY ITEM

MODEL: D:\infra\...
 FILE NAME: ...

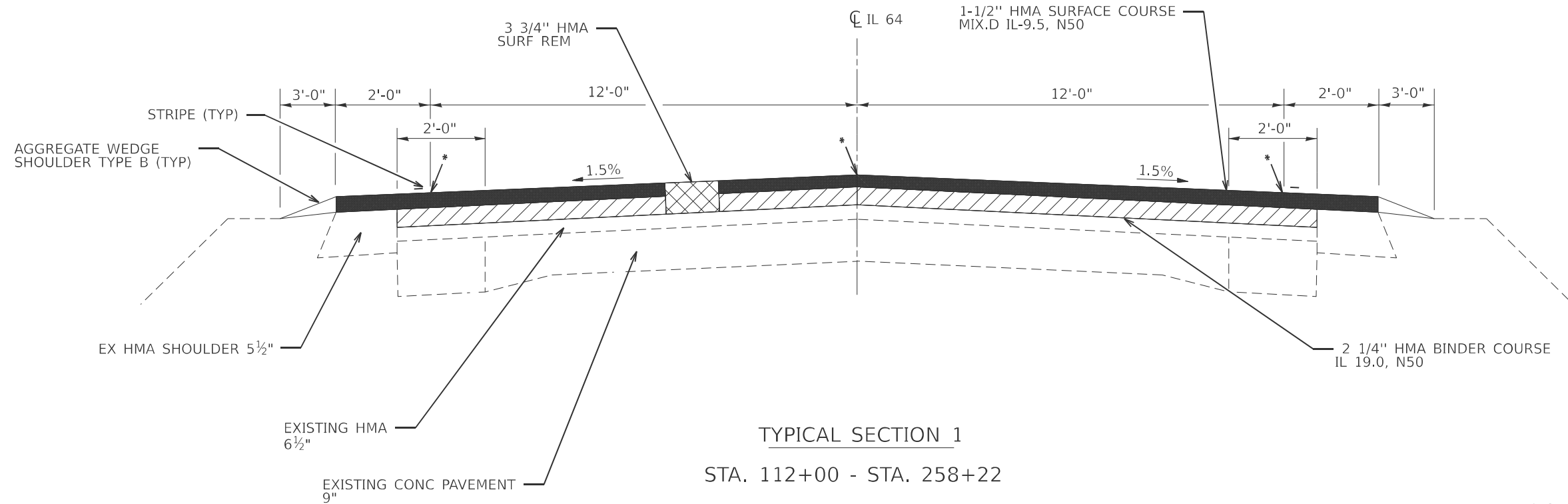
USER NAME = Boudle,Shan	DESIGNED -	REVISED -	STATE OF ILLINOIS DEPARTMENT OF TRANSPORTATION	SOQ	F.A.P. RTE. 307	SECTION 126RS-4	COUNTY DEKALB	TOTAL SHEETS 18	SHEET NO. 6	
PLOT SCALE = \$SCALE\$	CHECKED -	REVISED -			CONTRACT NO. 66P49					
PLOT DATE = 12/18/2024	DATE -	REVISED -			ILLINOIS FED. AID PROJECT					
					SCALE:	SHEET OF SHEETS	STA. TO STA.			

CODE NO.	ITEM	UNIT	TOTAL QUANTITY	CONSTR. CODE	
				100% STATE	
				ROADWAY	
				0005	RURAL
* 78011045	GROOVING FOR RECESSED PAVEMENT MARKING 9"	FOOT	266	266	
* 78011065	GROOVING FOR RECESSED PAVEMENT MARKING 13"	FOOT	229	229	
* 78011125	GROOVING FOR RECESSED PAVEMENT MARKING 25"	FOOT	43	43	
* 78100100	RAISED REFLECTIVE PAVEMENT MARKER	EACH	199	199	
* 78200005	GUARDRAIL REFLECTORS, TYPE A	EACH	32	32	
78300200	RAISED REFLECTIVE PAVEMENT MARKER REMOVAL	EACH	199	199	
X2040805	FURNISHED EXCAVATION (SPECIAL)	CU YD	41	41	
X4401198	HOT-MIX ASPHALT SURFACE REMOVAL, VARIABLE DEPTH	SQ YD	1823	1823	
X6350204	LINEAR DELINEATOR PANELS, 4 INCH	EACH	32	32	
Z0005216	HOT-MIX ASPHALT STABILIZATION 6" AT STEEL PLATE BEAM GUARD RAIL	SQ YD	536	536	
Z0030850	TEMPORARY INFORMATION SIGNING	SQ FT	42	42	

*= SPECIALTY ITEM

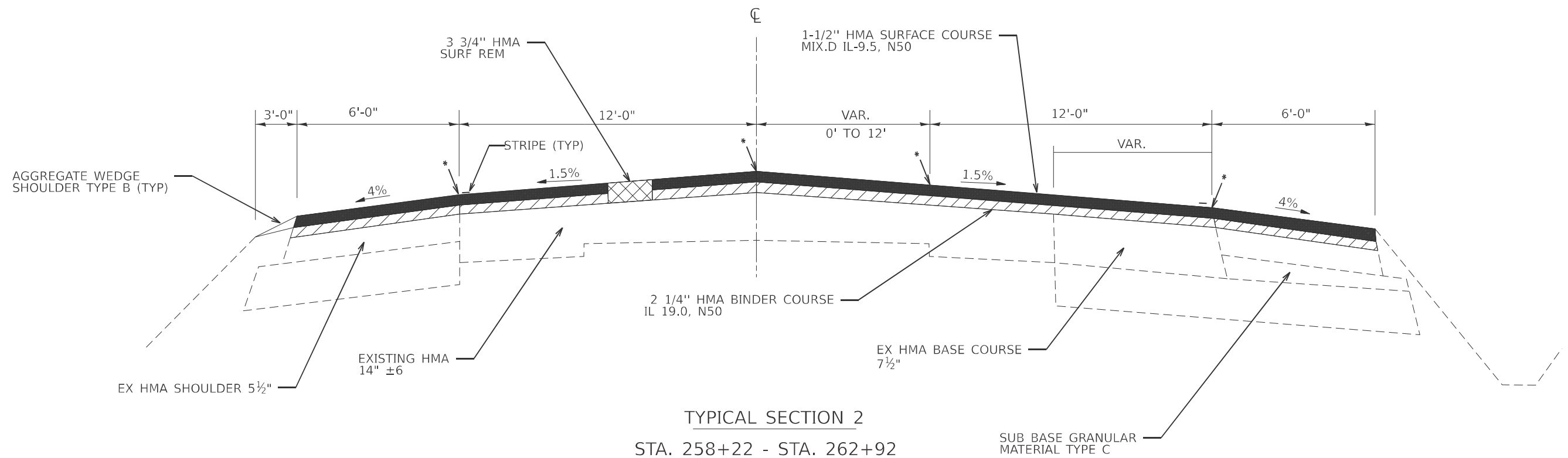
MODEL: D:\info\... FILE NAME: ...

USER NAME = Boudle,Shan	DESIGNED -	REVISED -	STATE OF ILLINOIS DEPARTMENT OF TRANSPORTATION	SOQ		F.A.P. RTE.	SECTION	COUNTY	TOTAL SHEETS	SHEET NO.	
PLOT SCALE = \$SCALE\$	DRAWN -	REVISED -		SCALE:	SHEET OF SHEETS	STA. TO STA.	307	126RS-4	DEKALB	18	7
PLOT DATE = 12/18/2024	CHECKED -	REVISED -		CONTRACT NO. 66P49							
DATE -	REVISED -	ILLINOIS FED. AID PROJECT									



TYPICAL SECTION 1
STA. 112+00 - STA. 258+22

*LONGITUDINAL JOINT SEALANT



TYPICAL SECTION 2
STA. 258+22 - STA. 262+92

*LONGITUDINAL JOINT SEALANT

MODEL: D:\data\...
 FILE NAME: ...

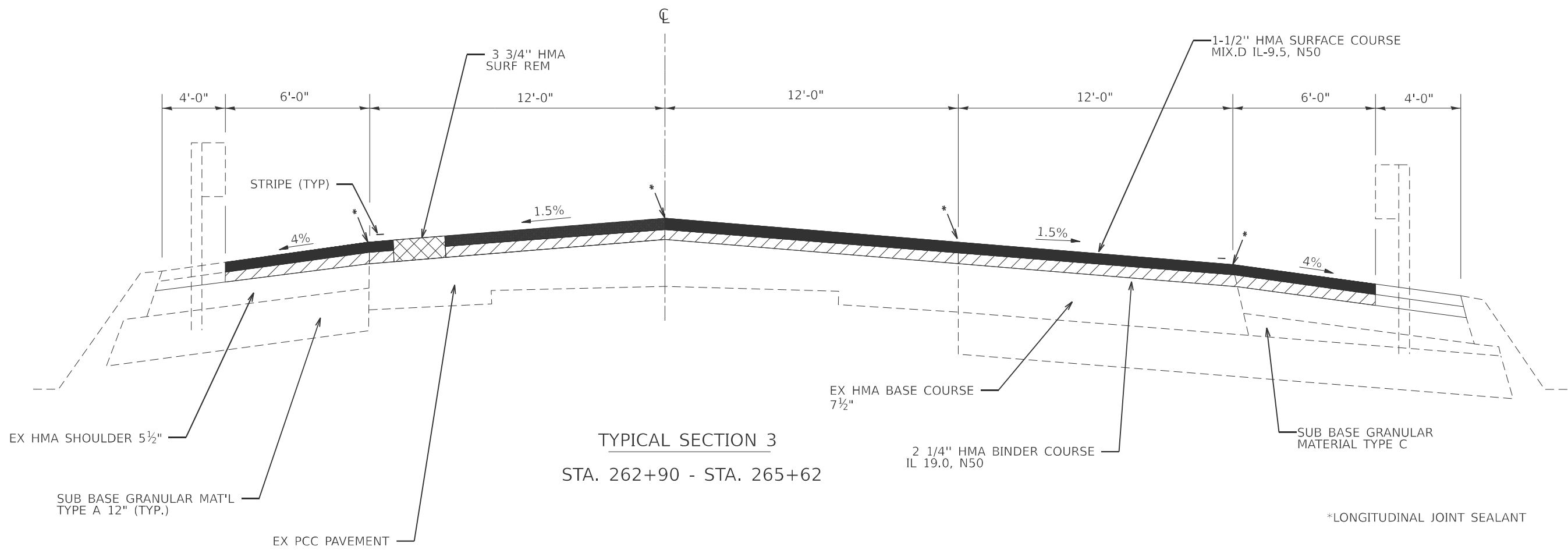
USER NAME = Boudle,Shan	DESIGNED -	REVISED -
	DRAWN -	REVISED -
PLOT SCALE = \$SCALE\$	CHECKED -	REVISED -
PLOT DATE = 12/11/2024	DATE -	REVISED -

STATE OF ILLINOIS
DEPARTMENT OF TRANSPORTATION

IL 64 TYPICALS

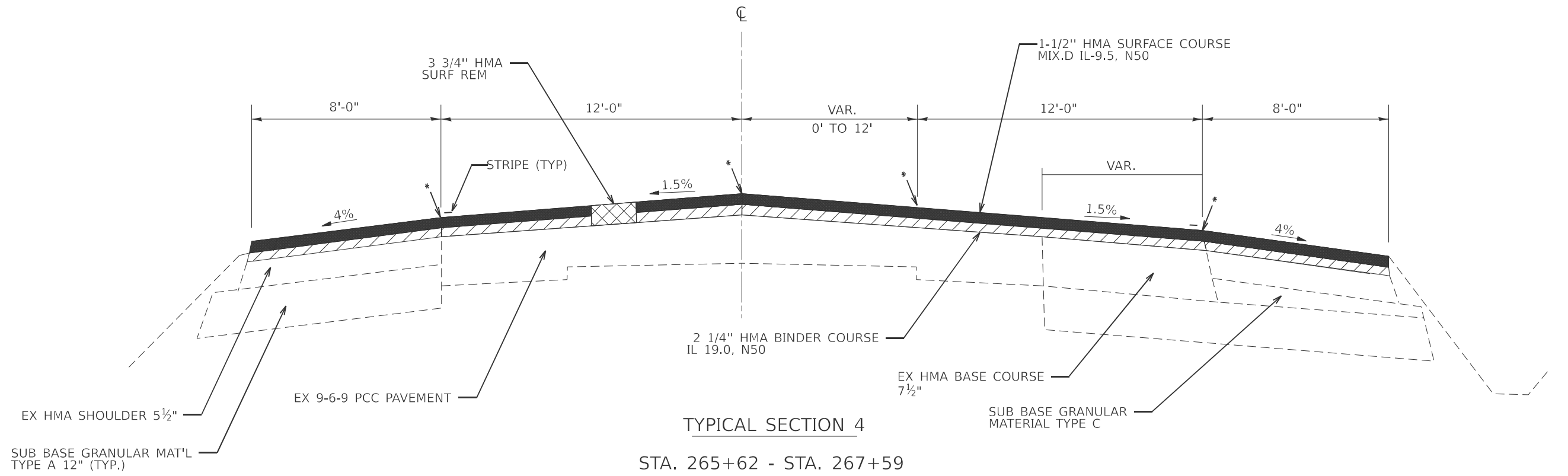
SCALE: SHEET OF SHEETS STA. TO STA.

F.A.P. RTE.	SECTION	COUNTY	TOTAL SHEETS	SHEET NO.
307	126RS-4	DEKALB	18	8
CONTRACT NO. 66P49				
ILLINOIS FED. AID PROJECT				



TYPICAL SECTION 3
STA. 262+90 - STA. 265+62

*LONGITUDINAL JOINT SEALANT



TYPICAL SECTION 4
STA. 265+62 - STA. 267+59

*LONGITUDINAL JOINT SEALANT

MODEL: D:\hwy\p\ill64typ\com\p\DOT\Documents\DOT Office\Drawings\3070\Project\66P49\CD\Drawings\66P49\Complete Sheets.dgn
 FILE NAME: p\ill64typ\com\p\DOT\Documents\DOT Office\Drawings\3070\Project\66P49\CD\Drawings\66P49\Complete Sheets.dgn

USER NAME = Boudle,Shan	DESIGNED -	REVISED -
	DRAWN -	REVISED -
PLOT SCALE = \$SCALE\$	CHECKED -	REVISED -
PLOT DATE = 12/11/2024	DATE -	REVISED -

STATE OF ILLINOIS
DEPARTMENT OF TRANSPORTATION

IL 64 TYPICALS	
SCALE:	SHEET OF SHEETS STA. TO STA.

F.A.P. RTE.	SECTION	COUNTY	TOTAL SHEETS	SHEET NO.
307	126RS-4	DEKALB	18	9
CONTRACT NO. 66P49				
		ILLINOIS	FED. AID PROJECT	

MAINLINE SCHEDULE														
LOCATION	NOTES	LENGTH	HMA WIDTH	RESURF AREA	HMA SURF REM 3-3/4"	HMA SURF CSE IL 9.5 MIX D, N50 (1-1/2")	HMA BIND CSE IL-19.0, N50 (2-1/4")	HMA BINDER CSE (HM) N50	MATL TRANS DEVICE	BIT MATL (TACK COAT)	LONG JOINT SEAL	MIXTURE CRACKS JTS & FLANGEWYS	TEMP RAMP	AGG WEDGE SHLD TY B
STATION		FOOT	FOOT	SQ FT	SQ YD	TON	TON	TON	TON	POUND	FOOT	TON	SQ YD	TON
US 64 RURAL														
STA 112+00 TO STA 258+22	RESURFACE	14622	28.0	409416	45491	3821	5732	22.7	9553	30706	43866	13.6	39	1112.4
STA 258+22 TO STA 262+92	VARIES	470	46.0	21620	2402	202	303	1.2	505	1622	1880	0.7		35.8
STA 262+92 TO STA 265+62	RESURFACE	270	48.0	12960	1440	121	181	0.7	302	972	1080	0.4		20.5
STA 265+62 TO STA 267+59	VARIES	197	46.0	9062	1007	85	127	0.5	212	680	788	0.3	64	15.0
TOTAL		15559		453058	50340	4229	6343	25	10572	33980	47614	15	103	1184

SIDE ROAD & ENTRANCE SCHEDULE														
LOCATION	AREA	HMA SURF REMOVAL VARIABLE DEPTH	BITUMINOUS MATERIAL (TACK COAT)	INCIDENTAL HMA SURFACING	TEMP RAMP	FURNISHED EXCAVATION (SPECIAL)	SEEDING CLASS 2A	NITROGEN FERTILIZER NUTRIENT (90 LB/ACRE)	PHOSPHORUS FERTILIZER NUTRIENT (90 LB/ACRE)	POTASSIUM FERTILIZER NUTRIENT (90 LB/ACRE)	EROSION CONTROL BLANKET			
ROAD NAME	SIDE	MATERIAL	STATION	SQ FT	SQ YD	POUND	TON	SQ YD	CU YD	ACRE	POUND	POUND	POUND	SQ YD
DEKALB COUNTY														
PE	RT	HMA	173+41	1650	183	83	18	44	5.0	0.01	0.9	0.9	0.9	48
PE	RT	HMA	176+27	875	97	44	10	28	4.1	0.008	0.7	0.7	0.7	39
LOVELL RD	RT	HMA	188+30	1590	177	80	17	44	5.0	0.01	0.9	0.9	0.9	48
LOVELL RD	LT	HMA	188+30	1500	167	75	16	42	5.0	0.01	0.9	0.9	0.9	48
LARSON RD	RT	HMA	233+92	1320	147	66	14	50	3.5	0.007	0.6	0.6	0.6	34
LARSON RD	LT	HMA	233+92	1029	114	51	11	40	3.4	0.007	0.6	0.6	0.6	34
E COUNTY LINE RD	RT	HMA	266+38	5625	625	281	61	100	7.7	0.015	1.4	1.4	1.4	73
W COUNTY LINE RD	LT	HMA	266+38	2814	313	141	31	58	7.2	0.014	1.3	1.3	1.3	68
TOTALS				16403	1823	821	178	406	41	0.25	22.5	22.5	22.5	1210

PAVEMENT MARKING SCHEDULE																
LOCATION	COMMENT	LENGTH	MODIFIED URETHANE			THERMOPLASTIC				PREF PL PM TY D STD L24	GROOVING FOR RECESSED PAVEMENT MARKING				RAISED REF PM	RAISED REF PM RCM
			LINE 4"		LINE 6"	LINE 8"	LINE 12"		LTR & SYM		LINE 9"	LINE 13"	LINE 25"	LTR & SYM		
			EOP	NO PASS	SKIP DASH LINE	MERGE LINE/ ISLAND LINE	ISLAND HATCHING	MEDIAN HATCHING	TURN ARROW							
STATION		FOOT	WHITE	YELLOW	YELLOW	WHITE	WHITE	YELLOW	WHITE	WHITE	FOOT	FOOT	FOOT	FOOT	EACH	EACH
DEKALB COUNTY																
STA 112+00 TO STA 121+86	EB NO PASS	986	3944	1972	494										13	13
STA 121+86 TO STA 123+64	NO PASS	178	712	712											3	3
STA 123+64 TO STA 133+92	WD NO PASS	1020	4112	2056	514										13	13
STA 133+92 TO STA 252+75	PASS	11883	47532	5942											149	149
STA 252+75 TO STA 258+22	EB NO PASS	547	2188	1094	274										7	7
STA 258+22 TO STA 265+93	PAINTED MEDIAN	771	3084	1368		155		147	47		155	147		47	10	10
STA 265+93 TO STA 266+70	INTERSECTION	85	340			111		31		23	111		23		2	2
STA 266+70 TO STA 267+59	PAINTED MEDIAN	81	486					82		20		82	20	31	2	2
TOTALS		15559	69600	7224	266		260	78		43	266	229	43	78	199	199

SHORT TERM PAVEMENT MARKINGS				
LOCATION	COMMENT	LENGTH	SHORT TERM PM	SHORT TERM PM REM
STATION		FOOT	FOOT	SQ FT
RURAL BUREAU COUNTY				
STA 112+00 TO STA 121+86	EB NO PASS	986	100	33
STA 121+86 TO STA 123+64	NO PASS	178	16	5
STA 123+64 TO STA 133+92	WB NO PASS	1028	104	35
STA 133+92 TO STA 252+75	PASS	11883	1188	396
STA 252+75 TO STA 258+22	EB NO PASS	547	56	19
STA 258+22 TO STA 265+93	PAINTED MEDIAN	771	76	25
STA 265+93 TO STA 266+70	INTERSECTION	85	16	5
STA 266+70 TO STA 267+59	PAINTED MEDIAN	81	8	3
TOTAL		15559	1564	521

MODEL: D:\info\...
 FILE NAME: ...

USER NAME = boudle.shan	DESIGNED -	REVISED -
	DRAWN -	REVISED -
PLOT SCALE = \$SCALE\$	CHECKED -	REVISED -
PLOT DATE = 12/17/2024	DATE -	REVISED -

STATE OF ILLINOIS
DEPARTMENT OF TRANSPORTATION

SCHEDULES				
SCALE:	SHEET	OF	SHEETS	STA. TO STA.

F.A.P. RTE.	SECTION	COUNTY	TOTAL SHEETS	SHEET NO.
307	126RS-4	DEKALB	18	10
CONTRACT NO. 66P49				
ILLINOIS FED. AID PROJECT				

DITCH CLEANING SCHEDULE								
LOCATION	LENGTH	SIDE	FLOW DIRECTION	GRADING & SHAPING DITCHES	EARTH EXCAVATION			
				FT	CU YD			
STA 128+00 TO STA 131+00	300	NORTH	WEST	300	44.4			
STA 131+00 TO STA 132+50	150	SOUTH	WEST	150	22.2			
STA 137+00 TO STA 138+50	150	SOUTH	WEST	150	22.2			
STA 177+50 TO STA 179+00	150	SOUTH	EAST	150	22.2			
STA 180+00 TO STA 182+00	200	NORTH	EAST	200	29.6			
STA 225+00 TO STA 226+00	100	SOUTH	WEST	100	14.8			
STA 230+00 TO STA 232+50	250	NORTH	WEST	250	37.0			
STA 231+50 TO STA 233+00	150	SOUTH	EAST	150	22.2			
TOTAL				1450	214.6			

SEEDING SCHEDULE FOR GRADING & SHAPING										
LOCATION	SIDE	LENGTH	WIDTH	SEEDING CLASS 2A	NITROGEN FERTILIZER	PHOSPHORUS FERTILIZER	POTASSIUM FERTILIZER	FROSTON CONTROL		
					(90 LB/ACRE)	(90 LB/ACRE)	(90 LB/ACRE)	BLANKET	FOOT	CU YD
STA 128+00 TO STA 131+00	NORTH	300	8	0.055	5	5	5	266	FOOT	CU YD
STA 131+00 TO STA 132+50	SOUTH	150	8	0.028	2.5	2.5	2.5	136	FOOT	CU YD
STA 137+00 TO STA 138+50	SOUTH	150	8	0.028	2.5	2.5	2.5	136	FOOT	CU YD
STA 177+50 TO STA 179+00	SOUTH	150	8	0.028	2.5	2.5	2.5	136	FOOT	CU YD
STA 180+00 TO STA 182+00	NORTH	200	8	0.037	3.3	3.3	3.3	179	FOOT	CU YD
STA 225+00 TO STA 226+00	SOUTH	100	8	0.018	1.6	1.6	1.6	87	FOOT	CU YD
STA 230+00 TO STA 232+50	NORTH	250	8	0.046	4.1	4.1	4.1	223	FOOT	CU YD
STA 231+50 TO STA 233+00	SOUTH	150	8	0.028	2.5	2.5	2.5	136	FOOT	CU YD
TOTALS				0.50	45	45	45	2420		

DRAINAGE SCHEDULE							
STA	SN	SIDE	SIZE/TYPE	WORK DESCRIPTION	BOX CULV TO BE CLEANED	CHANNEL EXCAVATION	
					FOOT	CU YD	
131+38	#1338	N AND S	4X1.5 BOX	CLEANING THE BARREL OF CULVERT	42		
203+00	SN 019-2528	N AND S	6X3 BOX	CLEAN BARREL AND GRADE OUTLET TO DRAIN TO ROW	42	10	
226+00	#1344	N AND S	4X1.5 BOX	CLEAN BARREL AND GRADE OUTLET TO DRAIN TO ROW	42	10	
264+00	SN 019-2529	N AND S	5X4 BOX	PATCH SINKHOLE ALONG THE NORTH GUARDRAIL			
TOTAL					126	20	

PERMANENT SURVEY MARKER SCHEDULE						
MONUMENT NUMBER	DESCRIPTION	APPROXIMATE LOCATION	EXISTING MONUMENT TYPE	PROPOSED MONUMENT TYPE	MONUMENT RECORD TO BE RECORDED	RESPONSIBILITY
N/A	NO PERMANENT SURVEY MARKERS OR OTHER MONUMENTS TO BE SET OR RESET.	N/A	N/A	N/A	N/A	N/A
<p>ONLY THE ORIGINAL SCOPE OF THIS JOB HAS BEEN SEARCHED FOR MONUMENTS. R.E. MUST INFORM PLATS AND PLANS TO SEARCH FOR ADDITIONAL MONUMENTS PRIOR TO MILLING IF ADDENDUMS HAVE BEEN ADDED TO THIS JOB.</p> <p>UNKNOWN MONUMENTS MAY EXIST. IF AN UNLISTED MONUMENT IS FOUND, R.E. IS REQUIRED TO PROTECT THE MONUMENT FROM DAMAGE UNTIL A PLATS AND PLANS LAND SURVEYOR CAN DOCUMENT THE MONUMENT. PLATS AND PLANS WILL RESET SUCH MONUMENTS IN KIND FOLLOWING CONSTRUCTION.</p>						

MODEL: D:\data\...
 FILE NAME: ...

USER NAME = Boudle,Shan	DESIGNED -	REVISED -
PLOT SCALE = \$SCALE\$	DRAWN -	REVISED -
PLOT DATE = 12/11/2024	CHECKED -	REVISED -
	DATE -	REVISED -

STATE OF ILLINOIS
DEPARTMENT OF TRANSPORTATION

SCALE:	SHEET	OF	SHEETS	STA.	TO STA.
--------	-------	----	--------	------	---------

F.A.P. RTE.	SECTION	COUNTY	TOTAL SHEETS	SHEET NO.
307	126RS-4	DEKALB	18	11
CONTRACT NO. 66P49				
ILLINOIS FED. AID PROJECT				

GUARDRAIL SCHEDULE											
LOCATION	SIDE	LENGTH OF NEED	GUARDRAIL REM	LONG SPAN GUARDRAIL OVER CULVERT, 12.5 FT SPAN	STEEL PLATE BEAM GUARDRAIL TYPE A, 6 FT POSTS	TBT TYPE 1 (SPL) TANGENT	GUARDRAIL REFLECTORS, TYPE A	HMA STABILIZATION 6" AT STEEL PLATE BEAM GUARDRAIL	TERMINAL MARKER DIRECT APPLIED	LINEAR DELINEATOR PANELS 4 INCH	
		FOOT	FOOT	FOOT	FOOT	EACH	EACH	SQ YD	EACH	EACH	
STA 130+46.0 TO STA 132+82.5	LT	236.50	155.0	12.5	150.0	2	2	67	2	2	
STA 129+93.5 TO STA 132+30.0	RT	236.50	140.0	12.5	150.0	2	2	67	2	2	
STA 150+39.0 TO STA 150+80.0	LT	41.00							2		
STA 150+07.0 TO STA 151+50.0	RT	143.00							2		
STA 150+08.0 TO STA 152+44.5	LT	236.50	140.0	12.5	150.0	2	2	67	2	2	
STA 149+55.5 TO STA 151+92.0	RT	236.50	140.0	12.5	150.0	2	2	67	2	2	
STA 202+60.0 TO STA 203+92.0	LT	132.00							2		
STA 202+00.0 TO STA 203+29.0	RT	129.00							2		
STA 215+30.5 TO STA 217+66.0	LT	235.50	104.0	12.5	150.0	2	2	67	2	2	
STA 214+78.0 TO STA 217+13.5	RT	235.50	90.0	12.5	150.0	2	2	67	2	2	
STA 225+08.0 TO STA 227+44.5	LT	236.50	140.0	12.5	150.0	2	2	67	2	2	
STA 224+55.5 TO STA 226+92.0	RT	236.50	140.0	12.5	150.0	2	2	67	2	2	
STA 263+49.0 TO STA 265+62.0	LT	213.00							2		
STA 262+40.0 TO STA 264+53.0	RT	213.00							2		
TOTAL			1049.0	100.0	1200.0	16.0	16.0	536.0	28.0	16.0	

PATCHING SCHEDULE						
LOCATION	SIDE	PATCH LENGTH	PATCH WIDTH	CLASS D PATCHES		
				TYPE II 7 INCH	TYPE II 9 INCH	TYPE II 22 INCH
STATION		FOOT	FOOT	SQ YD	SQ YD	SQ YD
125+68	RT	6	14			9.3
125+68	LT	6	14			9.3
128+43	RT	6	14			9.3
128+43	LT	6	14			9.3
128+67	RT	6	14			9.3
128+67	LT	6	14			9.3
132+54	RT	6	14			9.3
132+54	LT	6	14			9.3
134+96	RT	6	14			9.3
134+96	LT	6	14			9.3
146+52	RT	6	14		9.3	
147+11	RT	6	14		9.3	
147+11	LT	6	14		9.3	
152+95	RT	6	14		9.3	
152+95	LT	6	14		9.3	
152+41	RT	6	14		9.3	
152+41	LT	6	14		9.3	
158+90	RT	6	14		9.3	
158+90	LT	6	14		9.3	
174+71	LT	6	14		9.3	
175+48	LT	9	14		14	
178+81	LT	6	14		9.3	
203+69	RT	6	14		9.3	
203+69	LT	6	14		9.3	
204+30	LT	6	14		9.3	
207+52	RT	14	6		9.3	
213+73	RT	6	14	9.3		
213+73	LT	6	14	9.3		
220+90	RT	6	14	9.3		
220+90	LT	6	14	9.3		
221+46	RT	6	14	9.3		
221+46	LT	6	14	9.3		
222+70	RT	6	14	9.3		
222+70	LT	6	14	9.3		
232+11	LT	6	14	9.3		
233+11	LT	9	14	14		
235+62	LT	9	14	14		
236+33	RT	6	14	9.3		
236+33	LT	6	14	9.3		
TOTAL				130.3	158.2	93

MODEL: D:\data\...
 FILE NAME: ...

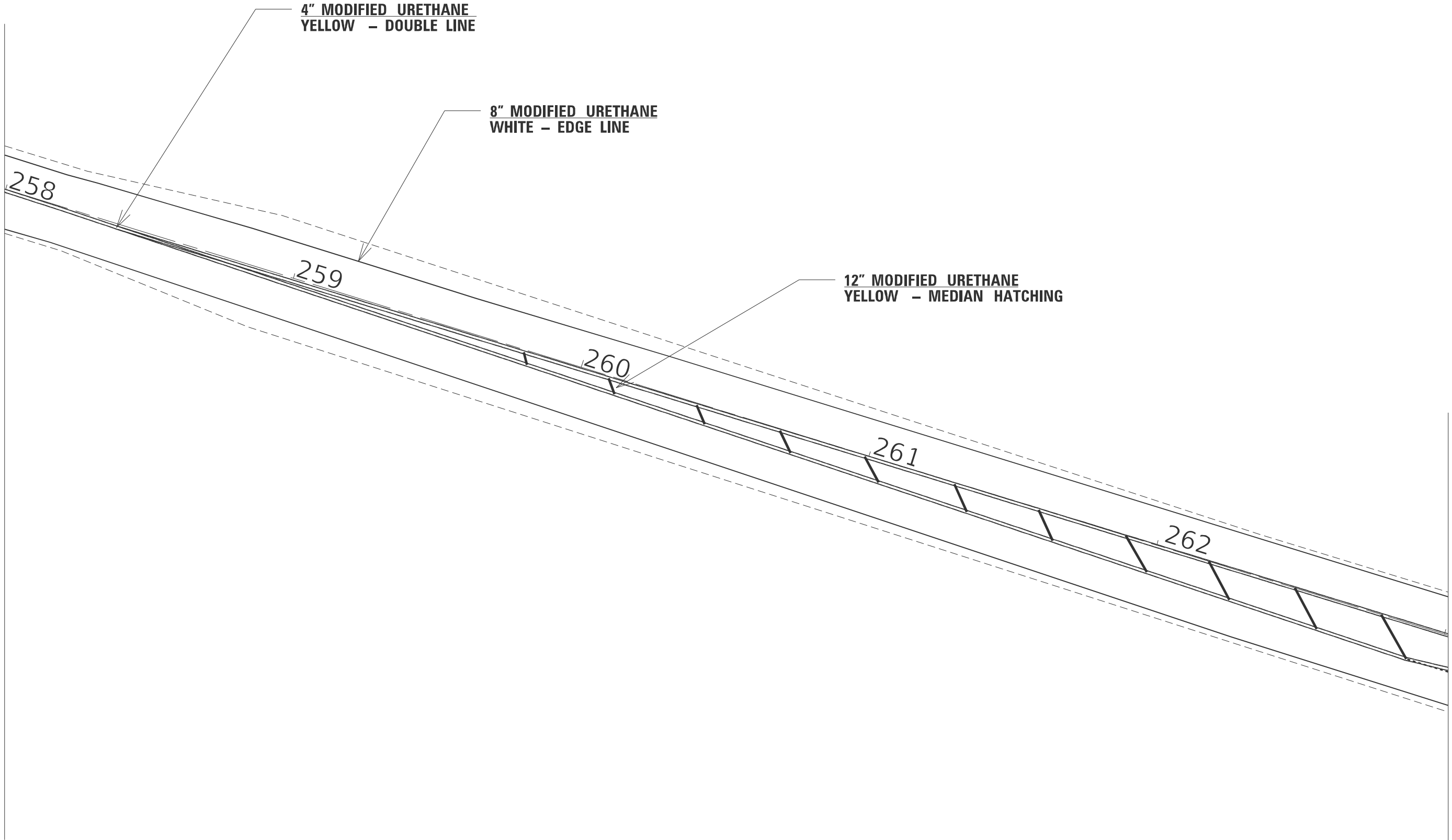
USER NAME = Boudle,Shan	DESIGNED -	REVISED -
PLOT SCALE = \$SCALE\$	DRAWN -	REVISED -
PLOT DATE = 12/11/2024	CHECKED -	REVISED -
	DATE -	REVISED -

**STATE OF ILLINOIS
DEPARTMENT OF TRANSPORTATION**

SCHEDULES

SCALE: SHEET OF SHEETS STA. TO STA.

F.A.P. RTE.	SECTION	COUNTY	TOTAL SHEETS	SHEET NO.
307	126RS-4	DEKALB	18	12
CONTRACT NO. 66P49				
ILLINOIS FED. AID PROJECT				



MATCH LINE STA. 263+00

MODEL: D:\data\... FILE NAME: ...

USER NAME = Boudle,Shan	DESIGNED -	REVISED -
	DRAWN -	REVISED -
PLOT SCALE = \$\$SCALE\$	CHECKED -	REVISED -
PLOT DATE = 12/11/2024	DATE -	REVISED -

**STATE OF ILLINOIS
DEPARTMENT OF TRANSPORTATION**

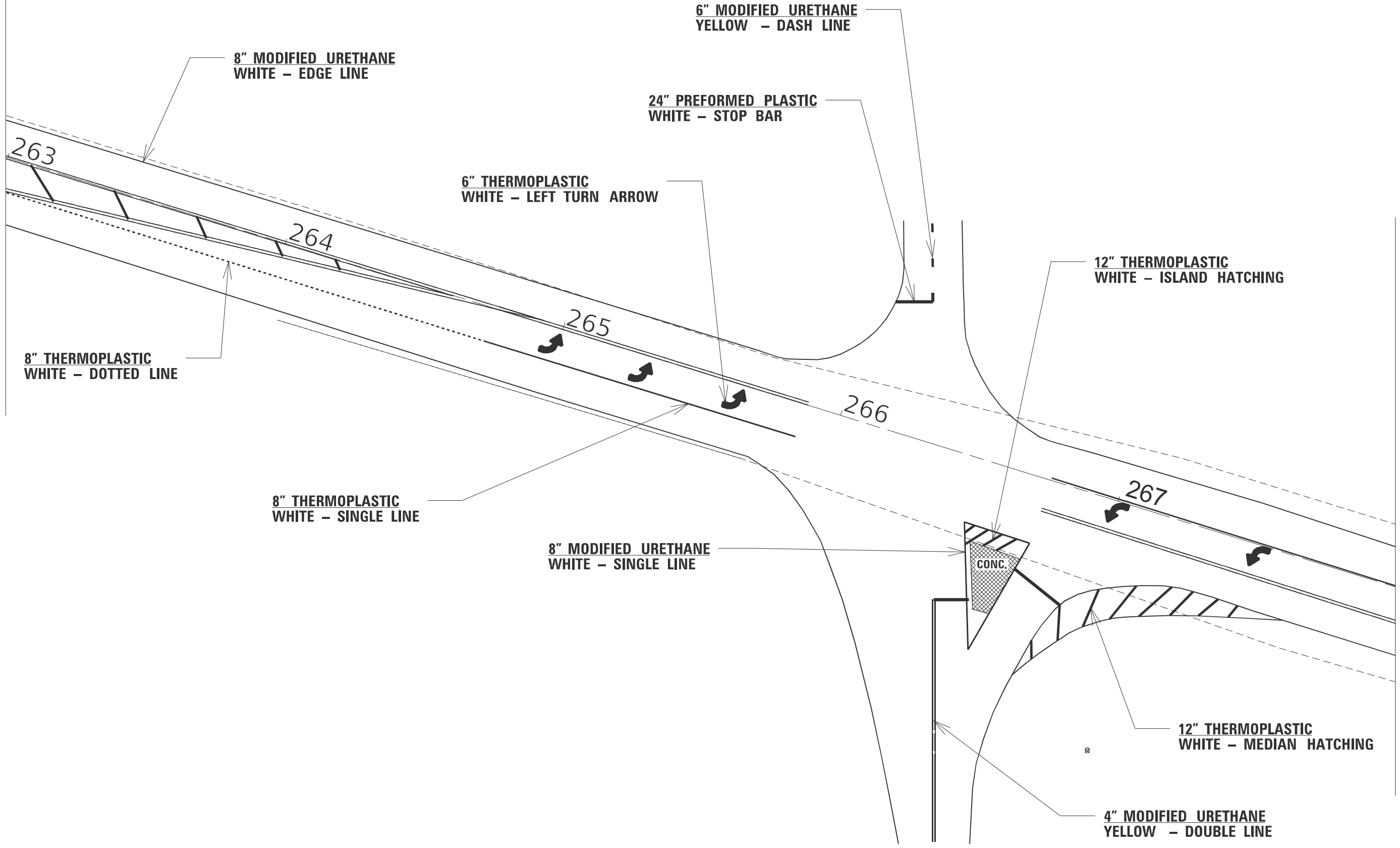
PAVEMENT MARKING DETAIL

SCALE: SHEET OF SHEETS STA. 258+00 TO STA. 263+00

F.A.P. RTE. 307	SECTION 126RS-4	COUNTY DEKALB	TOTAL SHEETS 18	SHEET NO. 13
ILLINOIS FED. AID PROJECT			CONTRACT NO. 66P49	

MATCH LINE STA. 263+00

MATCH LINE STA. 268+00



MODEL: D:\h141
FILE NAME: p:\bldg\p\h141\com\p\h141\DOT\Office\Detail\3\ORD Project\388P49\CADD\Detail\388P49 Complete Sheets.dgn

USER NAME = Boudle,Shan	DESIGNED -	REVISED -
	DRAWN -	REVISED -
PLOT SCALE = \$\$SCALE\$	CHECKED -	REVISED -
PLOT DATE = 12/11/2024	DATE -	REVISED -

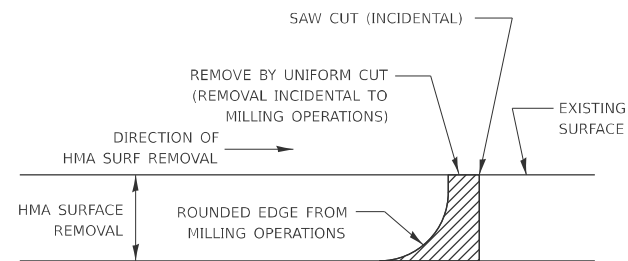
STATE OF ILLINOIS
DEPARTMENT OF TRANSPORTATION

PAVEMENT MARKING DETAIL

SCALE: SHEET OF SHEETS STA. 263+00 TO STA. 268+00

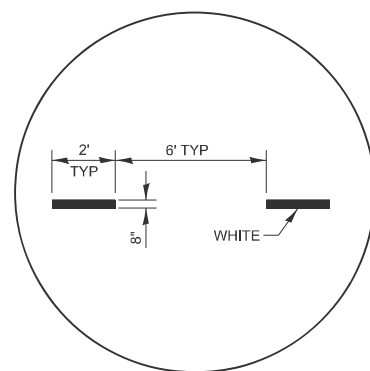
F.A.P. RTE.	SECTION	COUNTY	TOTAL SHEETS	SHEET NO.
307	126RS-4	DEKALB	18	14
CONTRACT NO. 66P49				
ILLINOIS FED. AID PROJECT				

MODEL: D:\info\...
 FILE NAME: ...

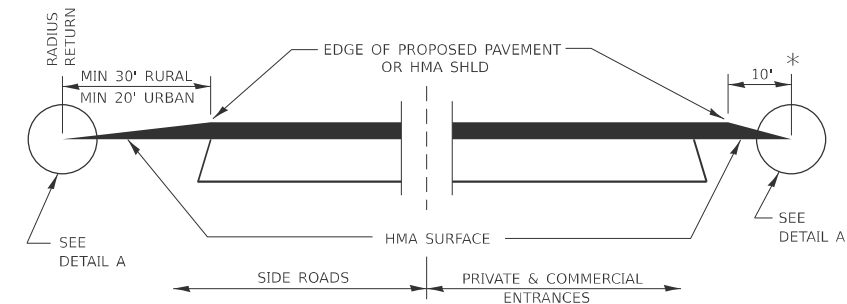


NOTE:
 WHEN MILLING OPERATIONS PRODUCE A ROUNDED EDGE, THEN A SAW CUT SHALL BE USED TO MANUFACTURE A PERPENDICULAR EDGE AS SHOWN IN THE DETAIL. THE ENGINEER SHALL BE THE SOLE JUDGE CONCERNING THE USE OF THIS DETAIL.

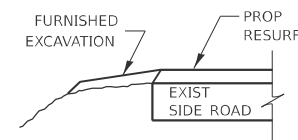
HMA DETAIL AT BUTT JOINTS



ADVANCE AND INTERSECTION LANE DIVIDER LINES

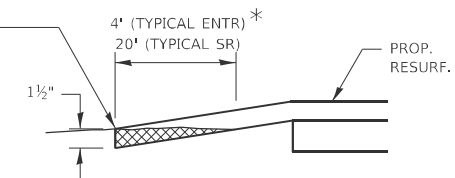


**SECTION A-A
 DETAILS AT ENTRANCES & SIDE ROADS**

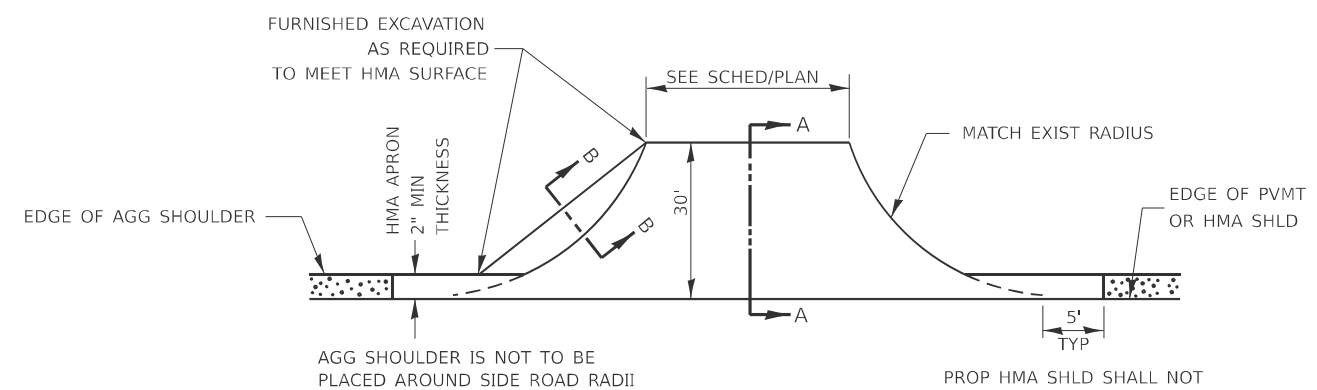


SECTION B-B

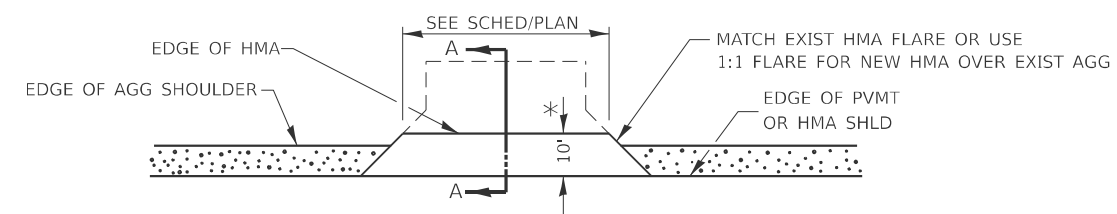
THE COST OF REMOVAL AT EXISTING HMA OR PCC LOCATIONS SHALL BE PAID FOR PER SQ YD BY THE APPROPRIATE PAY ITEM. REMOVAL AT THE EXISTING AGG LOCATIONS SHALL BE INCIDENTAL TO THE HMA. A-3 LOCATIONS SHALL BE FEATHER TAPERED.



DETAIL A



PLAN AT SIDE ROADS



PLAN AT PRIVATE & COMMERCIAL ENTRANCES

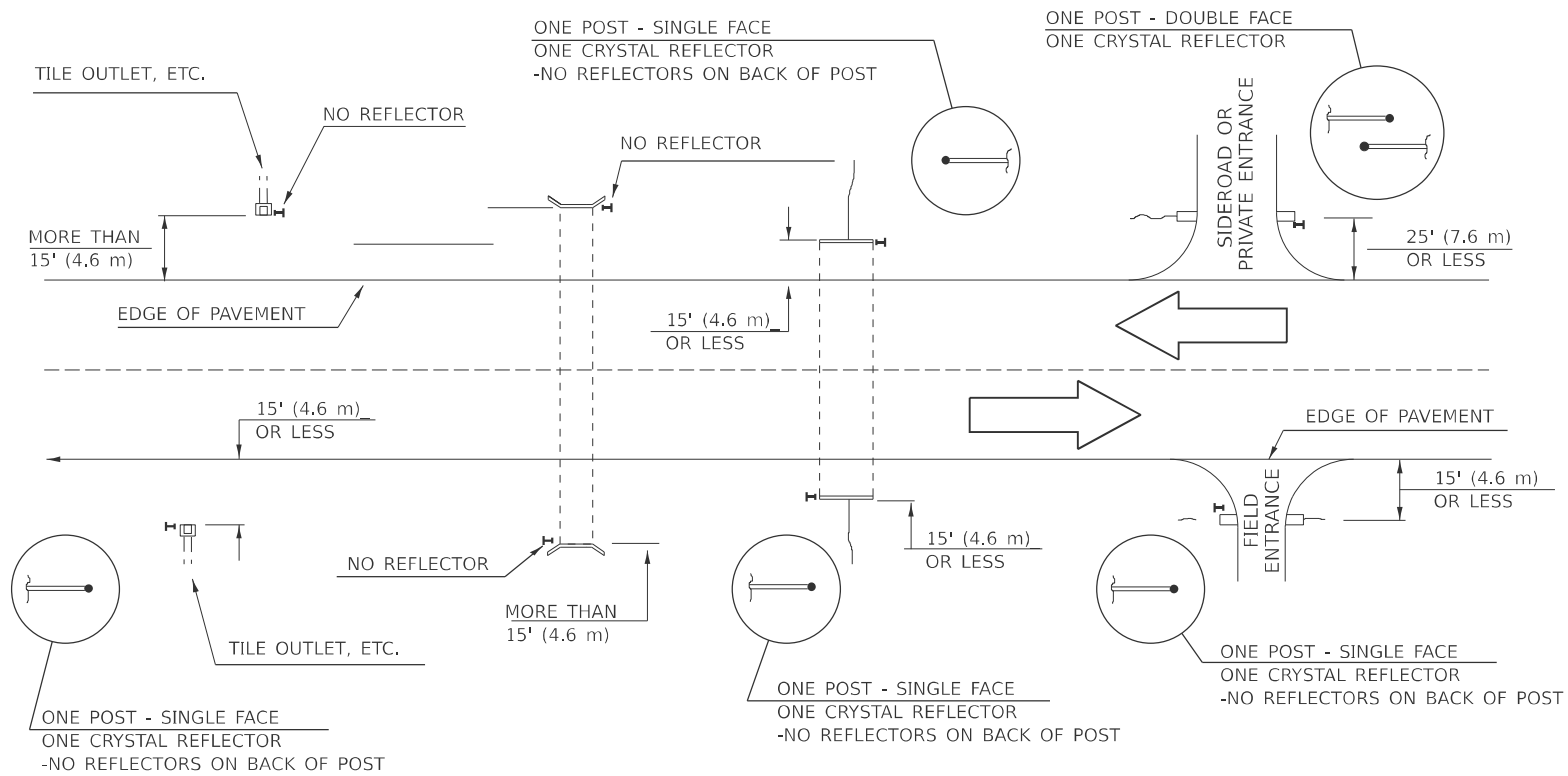
(DO NOT RESURFACE FIELD ENTRANCES)

USER NAME = Boudle,Shan	DESIGNED -	REVISED -
	DRAWN -	REVISED -
PLOT SCALE = \$\$SCALE\$	CHECKED -	REVISED -
PLOT DATE = 12/11/2024	DATE -	REVISED -

**STATE OF ILLINOIS
 DEPARTMENT OF TRANSPORTATION**

DETAILS			
SCALE:	SHEET	OF SHEETS	STA. TO STA.

F.A.P. RTE.	SECTION	COUNTY	TOTAL SHEETS	SHEET NO.
307	126RS-4	DEKALB	18	15
CONTRACT NO. 66P49				
ILLINOIS FED. AID PROJECT				



IDENTIFICATION OF ROADSIDE HAZARDS FOR TWO-LANE ROADWAYS

NOTES

DELINEATORS FOR ROADSIDE HAZARDS SHALL ONLY BE PLACED AT LOCATIONS WHERE THERE IS NO GUARDRAIL, OR OTHER PERMANENT BARRIER, ON THE SAME SIDE OF ROAD AS THE HAZARD.

DELINEATORS FOR ROADSIDE HAZARDS SHALL ONLY BE PLACED AT LOCATIONS WHERE DELINEATORS ARE NOT IN PLACE ALONG THE EDGE OF SHOULDER.

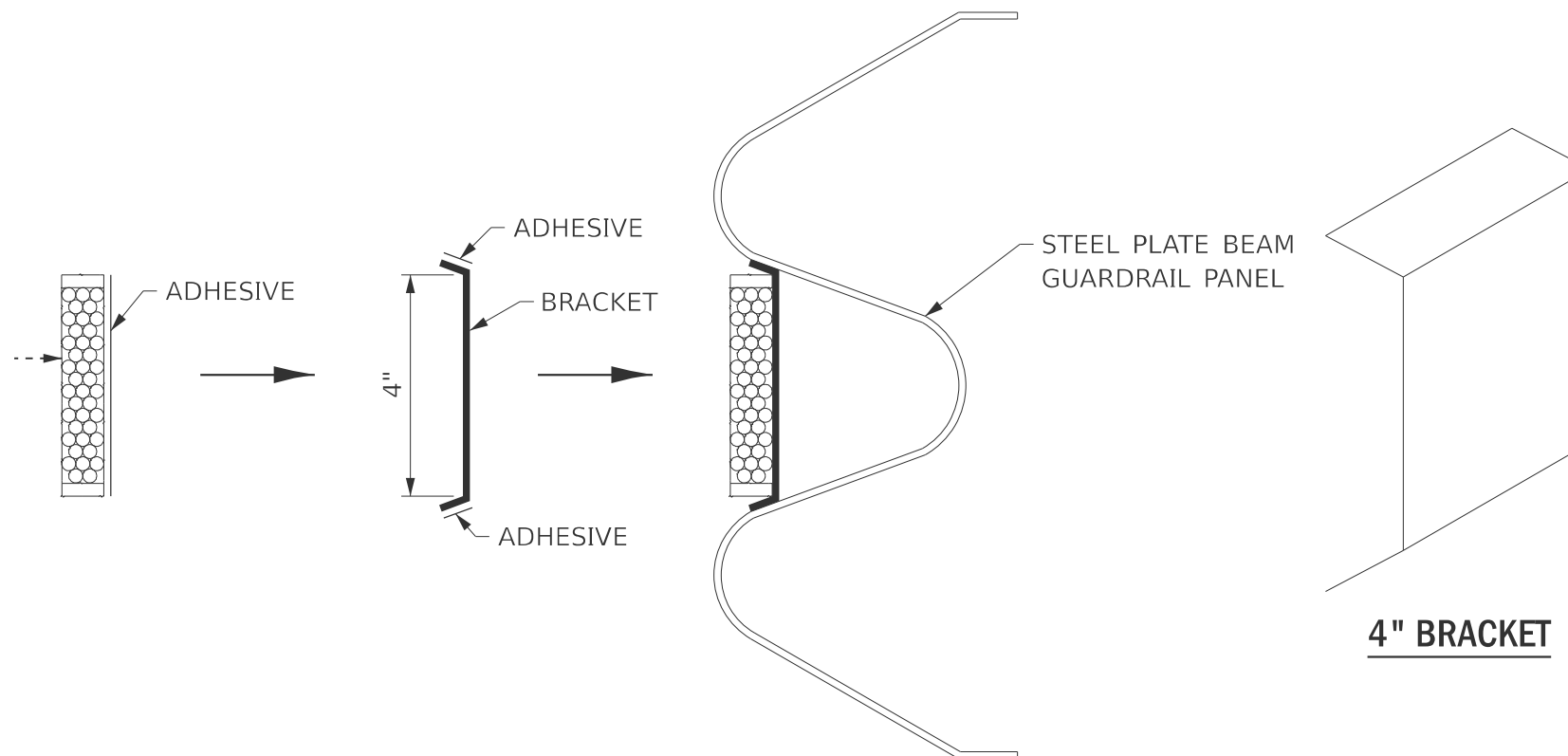
EACH POST SHALL BE CONSIDERED AS ONE DELINEATOR FOR PAYMENT, REGARDLESS OF THE NUMBER OF DELINEATORS ATTACHED TO IT.

FOR ONE-WAY ROADWAYS THE APPLICATION SHALL BE SIMILAR WITH DELINEATORS PLACED ON THE TRAFFIC APPROACH SIDE OF HAZARDS AND OBJECTS. ONLY SINGLE FACE DELINEATORS WILL BE REQUIRED ON ONE-WAY ROADWAYS. CRYSTAL ON RIGHT SIDE, AMBER ON LEFT.

FOR OTHER DELINEATOR APPLICATIONS, REFER TO HIGHWAY STANDARD 635001.

BILL OF MATERIALS

DELINEATOR TYPE	SINGLE FACE	DOUBLE FACE	NO REFLECTOR	TOTAL DELINEATORS
SINGLE CRYSTAL	8	7	N/A	15
SINGLE CRYSTAL			TOTAL	15



LINEATOR DELINEATOR APPLICATION TO STANDARD GALVANIZED GUARDRAIL

LINEATOR DELINEATOR SHALL BE APPLIED ACCORDING TO THE MANUFACTURER'S RECOMMENDATIONS

MODEL: D:\data\... FILE NAME: ...

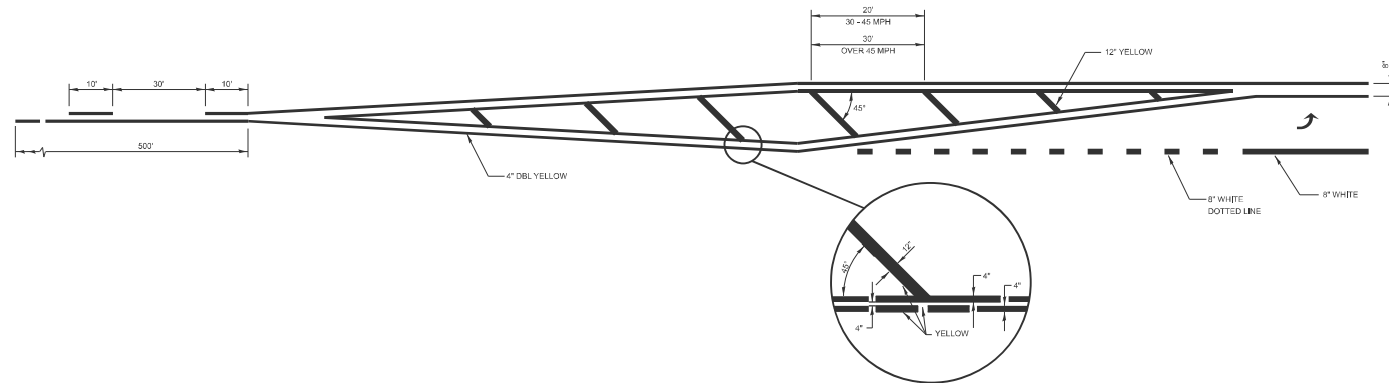
USER NAME = Boudle,Shan	DESIGNED -	REVISED -
	DRAWN -	REVISED -
PLOT SCALE = \$SCALE\$	CHECKED -	REVISED -
PLOT DATE = 12/11/2024	DATE -	REVISED -

**STATE OF ILLINOIS
DEPARTMENT OF TRANSPORTATION**

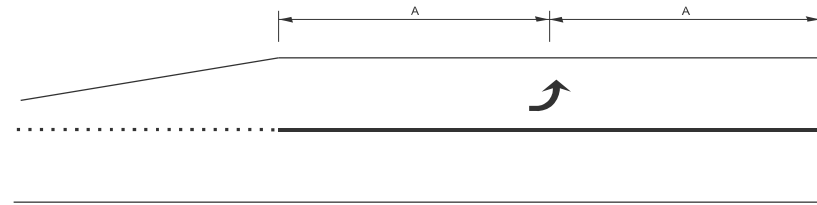
DETAILS

SCALE: SHEET OF SHEETS STA. TO STA.

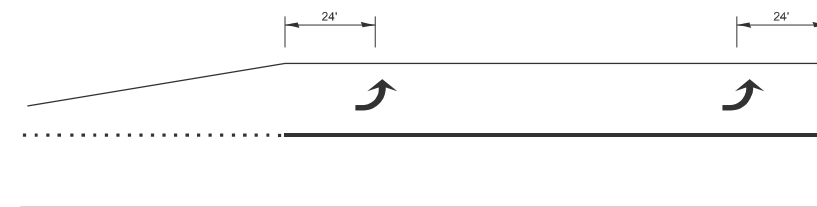
F.A.P. RTE.	SECTION	COUNTY	TOTAL SHEETS	SHEET NO.
307	126RS-4	DEKALB	18	16
CONTRACT NO. 66P49				
ILLINOIS FED. AID PROJECT				



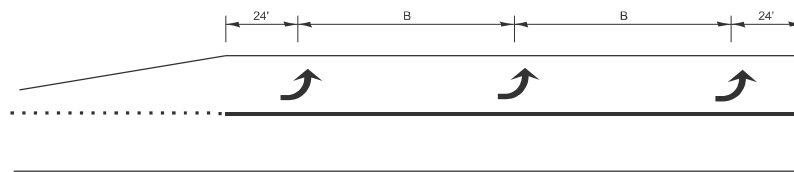
LEFT TURN LANE WITH APPROACH MEDIAN



99' AND UNDER

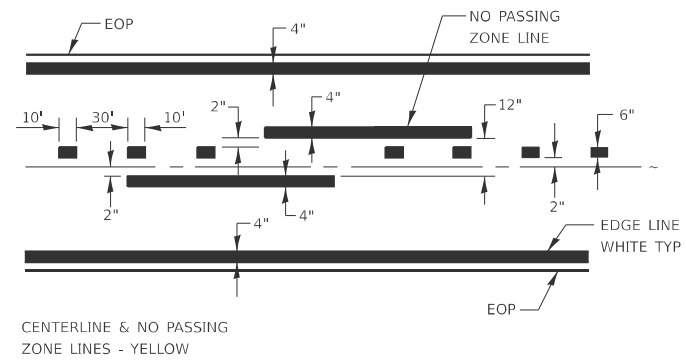


100' TO 149'



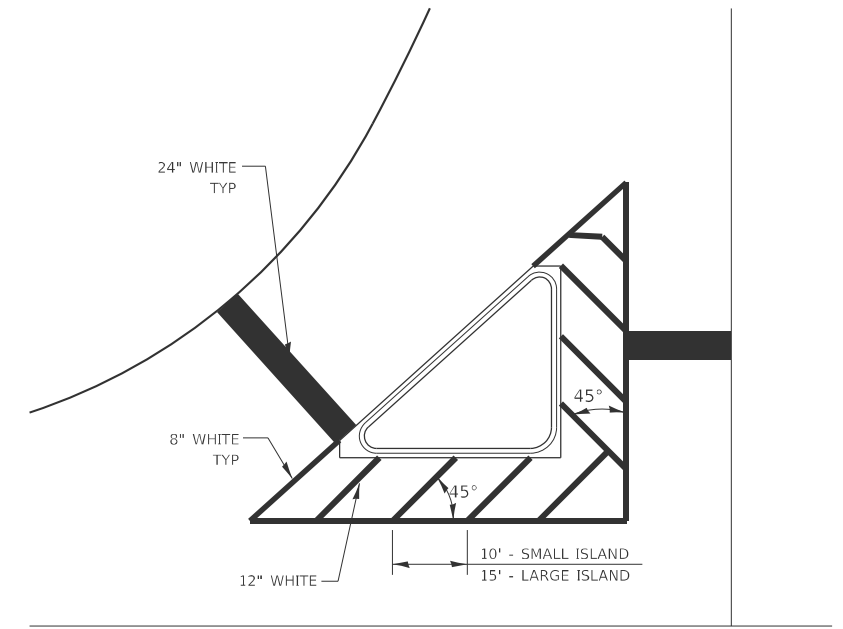
150' AND LONGER

**TYPICAL PLACEMENT OF ARROWS
IN TURN LANES**

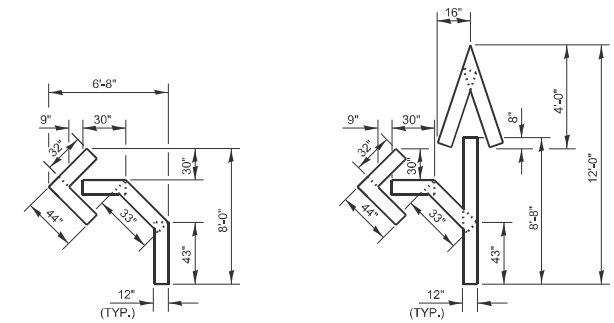


CENTERLINE & NO PASSING
ZONE LINES - YELLOW

PAVEMENT MARKING

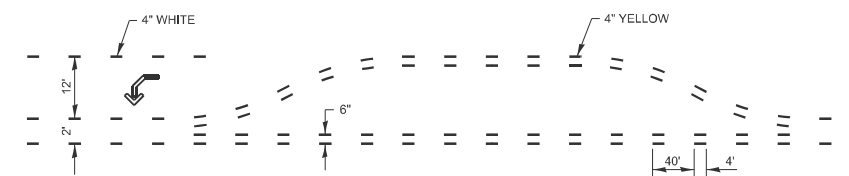


TYPICAL ISLAND



QUANTITY
12" LINE = 16 LIN FT
OR 4" LINE = 48 LIN FT

QUANTITY
12" LINE = 29 LIN FT
OR 4" LINE = 87 LIN FT



**SHORT-TERM PAVEMENT MARKING
FOR MEDIANS AND ARROWS**

MODEL: D:\infra\...
FILE NAME: ...

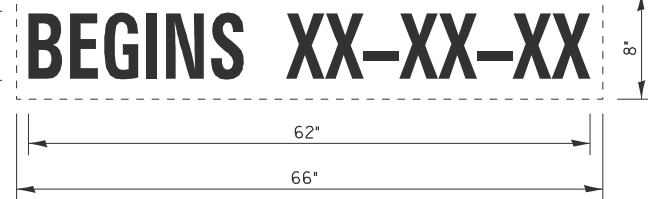
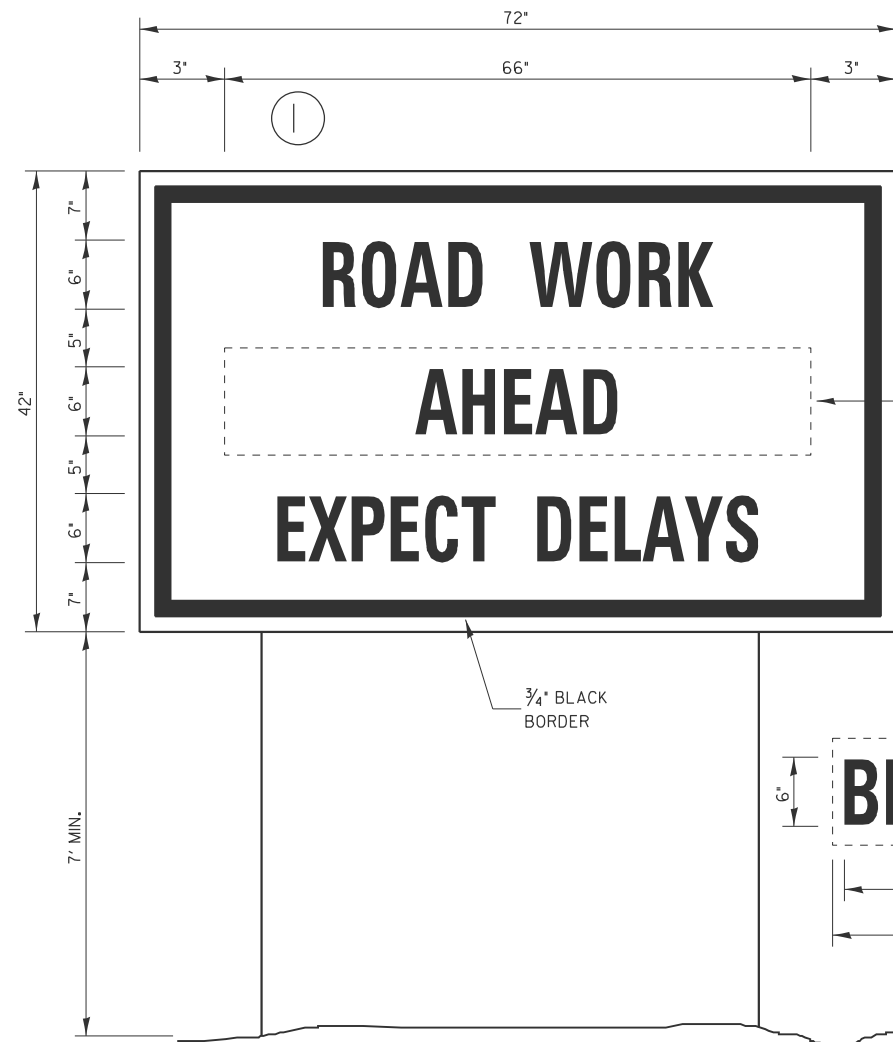
USER NAME = Boudle,Shan	DESIGNED -	REVISED -
	DRAWN -	REVISED -
PLOT SCALE = \$SCALE\$	CHECKED -	REVISED -
PLOT DATE = 12/11/2024	DATE -	REVISED -

**STATE OF ILLINOIS
DEPARTMENT OF TRANSPORTATION**

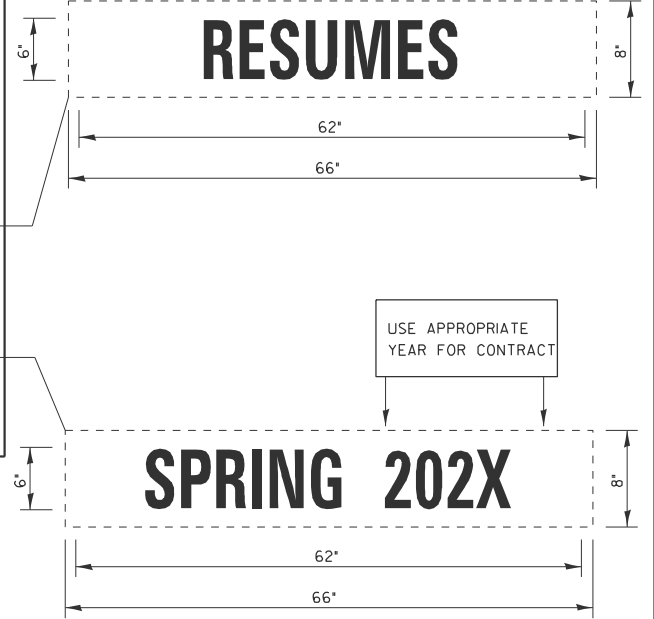
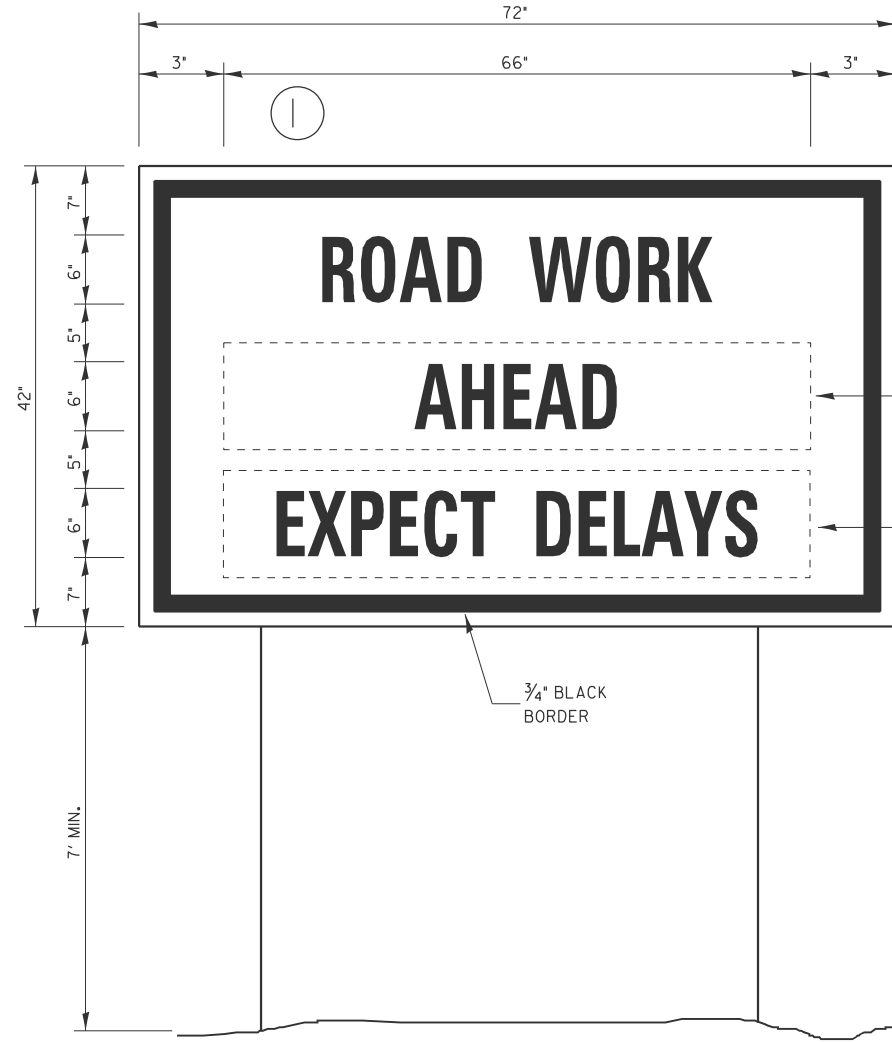
DETAILS

SCALE: SHEET OF SHEETS STA. TO STA.

F.A.P. RTE. 307	SECTION 126RS-4	COUNTY DEKALB	TOTAL SHEETS 18	SHEET NO. 17
CONTRACT NO. 66P49				
ILLINOIS FED. AID PROJECT				



TEMPORARY INFORMATION SIGNING



WINTER SHUT DOWN SIGNING

NOTES:

1. USE 6" D BLACK LETTERING ON FLOURESENT ORANGE BACKGROUND.
2. ERECT SIGNS AT LOCATIONS IN ADVANCE OF THE "ROAD CONSTRUCTION AHEAD" SIGNS AS DIRECTED BY THE ENGINEER.
3. ERECT SIGN ① WITH INSTALLED PANEL 2 ② A MINIMUM OF ONE WEEK PRIOR TO THE START OF THE LANE CLOSURE.
4. REMOVE PANEL ② ON THAT DATE.
5. SEE SPECIAL PROVISION "TEMPORARY INFORMATION SIGNING" FOR ADDITIONAL INFORMATION.
6. WILL BE PAID FOR PER SQ FT AS "TEMPORARY INFORMATION SIGNING". EACH SIGN = 21 SQ FT AND THE DATE PANEL 2 ② WILL NOT BE MEASURED SEPARATELY FOR PAYMENT.

MODEL: D:\info\...
 FILE NAME: ...

USER NAME = Boudle,Shan	DESIGNED -	REVISED -
PLOT SCALE = \$SCALE\$	DRAWN -	REVISED -
PLOT DATE = 12/11/2024	CHECKED -	REVISED -
	DATE -	REVISED -

**STATE OF ILLINOIS
DEPARTMENT OF TRANSPORTATION**

DETAILS

SCALE: SHEET OF SHEETS STA. TO STA.

F.A.P. RTE.	SECTION	COUNTY	TOTAL SHEETS	SHEET NO.
307	126RS-4	DEKALB	18	18
CONTRACT NO. 66P49				
ILLINOIS FED. AID PROJECT				