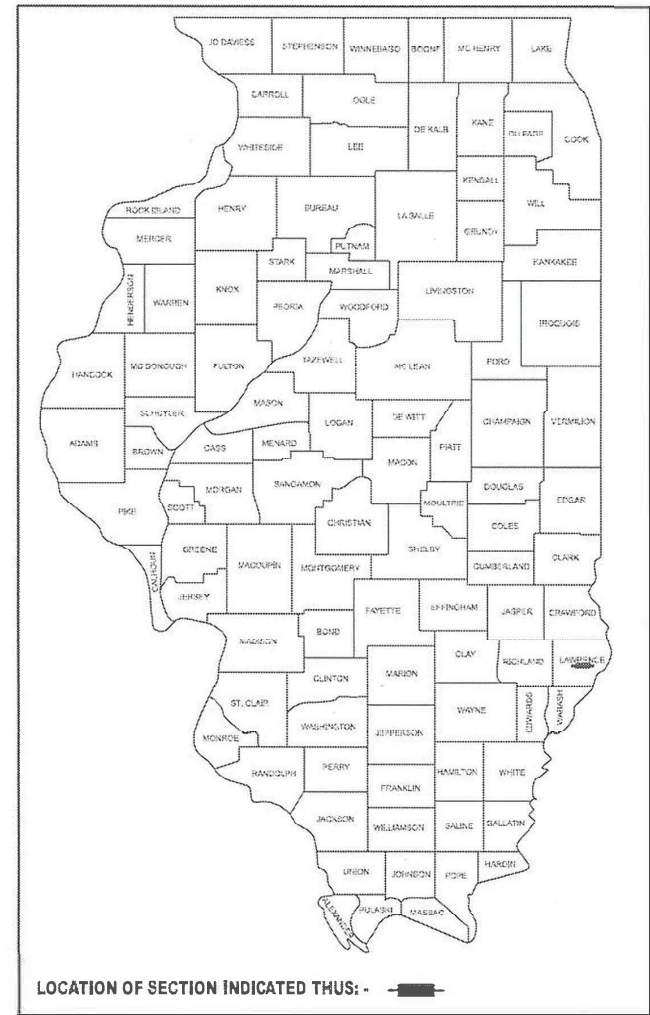


STATE OF ILLINOIS
DEPARTMENT OF TRANSPORTATION

F.A.P. RTE.	SECTION	COUNTY	TOTAL SHEETS	SHEET NO.
VAR	(51-23,3-2,2-2,2Z)RS-2	LAWRENCE	36	1
		ILLINOIS	CONTRACT NO. 74C45	

FAP 327, FAS 1809

D-97-091-23



PROPOSED HIGHWAY PLANS

FAP ROUTE 327 (US 50) FAS ROUTE 1809 (US 50 BUS)
SECTION (51-23,3-2,2-2,2Z)RS-2
PROJECT NHPP-STP-TWTZ(288)
SMART RESURFACING
LAWRENCE COUNTY

C-97-122-23

FOR INDEX OF SHEETS, SEE SHEET NO. 2

CURRENT TRAFFIC DATA

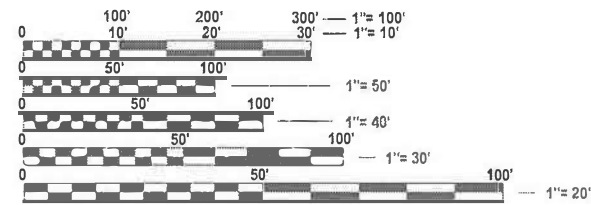
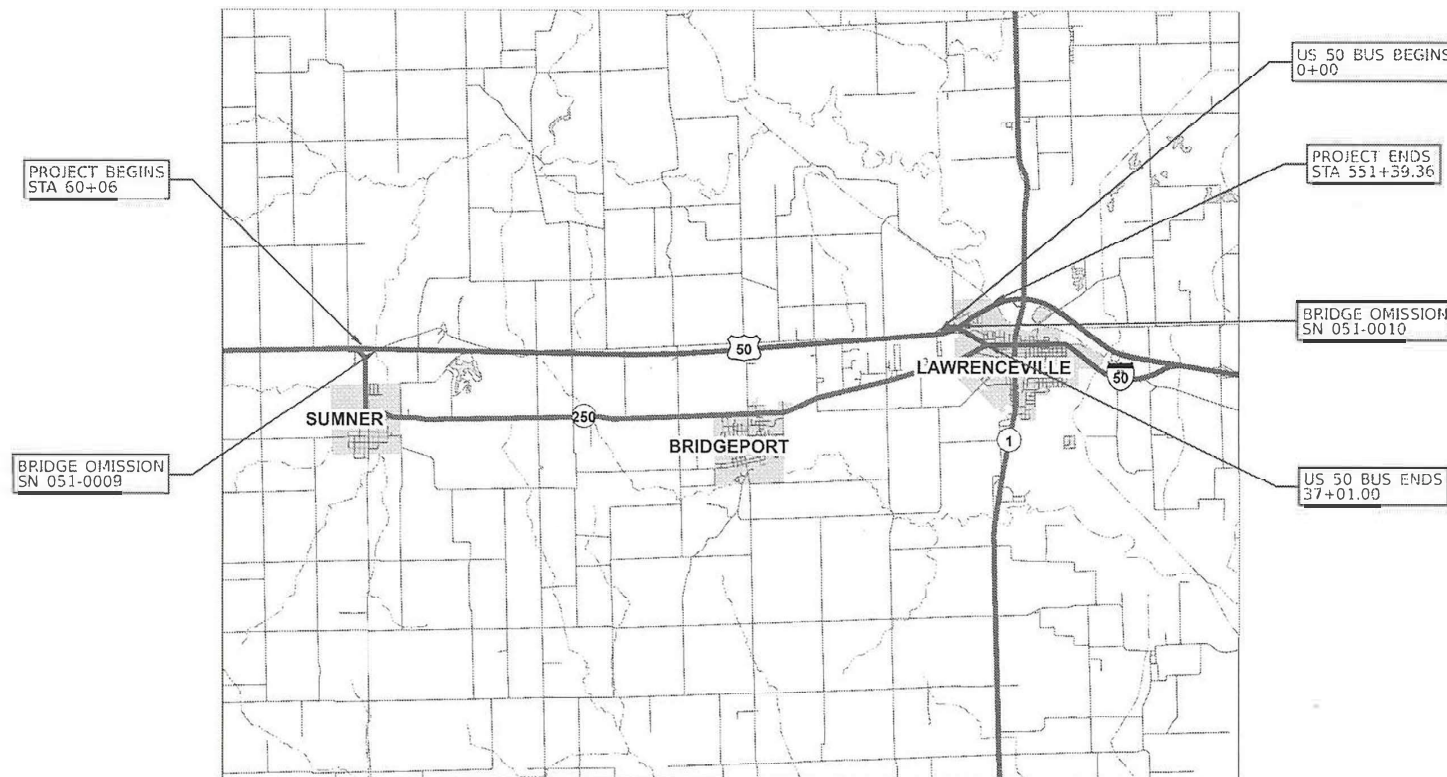
2025 ADT	4450
P.V.%	82.5%
S.U.%	5.1%
M.U.%	12.4%

STATION EQUATIONS:

192 + 90.50 BK = 192 + 83.00 AH
494 + 49.74 BK = 1494 + 49.74 AH
1538 + 68.25 BK = 537 + 95.53 AH

BRIDGE OMISSIONS:

STA 70 + 41.13 TO STA 73 + 08.88
STA 1519 + 02.00 TO 1522 + 28.00



FULL SIZE PLANS HAVE BEEN PREPARED USING STANDARD ENGINEERING SCALES. REDUCED SIZED PLANS WILL NOT CONFORM TO STANDARD SCALES. IN MAKING MEASUREMENTS ON REDUCED PLANS, THE ABOVE SCALES MAY BE USED.

J.U.L.I.E.
JOINT UTILITY LOCATION INFORMATION FOR EXCAVATION
1-800-892-0123
OR 811

PROJECT ENGINEER: BRIAN LEWIS
PROJECT MANAGER: ANDREW NIEMERG

CONTRACT NO. 74C45

GROSS LENGTH = 53,697 FT. = 10.17 MILE
NET LENGTH = 53,116 FT. = 10.06 MILE

STATE OF ILLINOIS
DEPARTMENT OF TRANSPORTATION

SUBMITTED DECEMBER 11 20 24
Jeffrey P. Meyer REGIONAL ENGINEER

January 31 2025
[Signature] ENGINEER OF DESIGN AND ENVIRONMENT

January 31 2025
[Signature] DIRECTOR OF HIGHWAYS PROJECT IMPLEMENTATION

PRINTED BY THE AUTHORITY
OF THE STATE OF ILLINOIS

GENERAL NOTES

THIS PROJECT IS LOCATED ON FAP ROUTE 327 (US 50) FROM SUMNER ROAD TO THE EMBARRAS RIVER. AND FAS 1809 (US 50 BUS) FROM US 50 TO ILL 250/US 50 BUS IN LAWRENCE COUNTY,

THE WORK CONSISTS OF PAVEMENT PATCHING, MILLING, HOT-MIX ASPHALT RESURFACING, AGGREGATE WEDGE SHOULDERS, PAVEMENT MARKING, RUMBLE STRIPS, AND ANY OTHER WORK NECESSARY TO COMPLETE THIS SECTION.

SUFFICIENT QUANTITIES OF SURFACE COURSE ARE INCLUDED IN THIS CONTRACT TO TAKE THE PLACE OF WHAT WAS INCLUDED IN BRIDGE REPLACEMENT CONTRACT 74443.

LONGITUDINAL JOINT SEALANT SHALL BE PLACED ON THE MILLED SURFACE.

THE MATERIAL USED FOR AGGREGATE WEDGE SHOULDERS, TYPE B SHALL BE CRUSHED STONE, CRUSHED CONCRETE, OR RAP.

WHEN APPLYING SHORT TERM PAVEMENT MARKINGS, TEMPORARY TAPE SHALL BE USED ON THE SURFACE COURSE, AND PAINT SHALL BE USED ON MILLED SURFACES.

GROOVING FOR PAVEMENT MARKING LETTERS AND SYMBOLS SHALL BE DONE IN THE SHAPE OF THE PROPOSED MARKINGS

THE FOLLOWING RATES OF APPLICATION HAVE BEEN USED IN CALCULATING PLAN QUANTITIES:

HOT MIX ASPHALT	112 LBS/SQ YD/IN
AGGREGATE WEDGE SHOULDERS	2.05 TONS/CU YD
BITUMINOUS MATERIALS (TACK COAT)	0.075 LBS/SQ FT MILLED SURFACE

INDEX OF SHEETS

<u>SHEET NO.</u>	<u>DESCRIPTION</u>
1	COVER SHEET
2	GENERAL NOTES/ INDEX OF SHEETS / HIGHWAY STANDARDS
3 - 4	SUMMARY OF QUANTITIES
5 - 8	TYPICAL SECTIONS
9 - 11	SCHEDULE OF QUANTITIES
12 - 31	PLAN SHEETS
32 - 36	DISTRICT DETAILS

THE FOLLOWING STANDARDS ARE A PART OF THESE PLANS AND ARE INCLUDED AFTER SHEET NO. 36

STD. NO.	DESCRIPTION
000001-08	STANDARD SYMBOLS, ABBREVIATIONS AND PATTERNS
001006	DECIMAL OF AN INCH & OF A FOOT
442201-03	CLASS C AND D PATCHES
642006-01	SHOULDER RUMBLE STRIPS, 8 IN.
667101-02	PERMANENT SURVEY MARKERS
701001-02	OFF-RD OPERATIONS, 2L, 2W, MORE THAN 15' FROM PAVEMENT EDGE
701006-05	OFF-RD OPERATIONS, 2L, 2W, 15' TO 24" FROM PAVEMENT EDGE
701011-04	OFF-RD MOVING OPERATIONS, 2L,2W, DAY ONLY
701201-05	LANE CLOSURE, 2L, 2W, DAY ONLY, FOR SPEEDS ≥ 45 MPH
701301-04	LANE CLOSURE, 2L, 2W, SHORT TIME OPERATIONS
701306-04	LANE CLOSURE, 2L, 2W, SLOW MOVING OPERATIONS DAY ONLY, FOR SPEEDS ≥ 45 MPH
701311-03	LANE CLOSURE 2L, 2W, MOVING OPERATIONS - DAY ONLY
701501-06	URBAN LANE CLOSURE, 2L, 2W, UNDIVIDED
701901-10	TRAFFIC CONTROL DEVICES
780001-05	TYPICAL PAVEMENT MARKINGS
781001-04	TYPICAL APPLICATIONS RAISED REFLECTIVE PAVEMENT MARKERS

THE FOLLOWING MIXTURE REQUIREMENTS ARE APPLICABLE TO THIS PROJECT:

LOCATION(S)	MIXTURE USE(S)	PG	DESIGN AIR VOIDS	MIXTURE COMPOSITION	FRICTION AGGREGATE	MIXTURE WEIGHT	QUALITY MANAGEMENT PROGRAM	SUBLOT SIZE	MATERIAL TRANSFER DEVICE (REQUIRED?)
MAINLINE	POLYMERIZED HMA SURFACE COURSE, IL-9.5, MIX "D", N90	SBS PG 70-22	4.0% @ N=90	IL - 9.5	MIXTURE D	N90	PFP	1000	N/A
CLASS D PATCHING	HMA BINDER COURSE, IL-19.0, N90	PG 64-22	4.0% @ N=90	IL - 19.0	N/A	N90	QCQA	3000	N/A

REV - MS

MODEL: General Notes and Index (Sheet)
FILE NAME: c:\pwworkspace\andrew.niemerg@illinois.gov\d0911650\D774C45-ashl-GenNotes.dgn

USERNAME = andrew.niemerg	DESIGNED -	REVISED -
	DRAWN -	REVISED -
	CHECKED -	REVISED -
PLOT DATE = 11/20/2024	DATE -	REVISED -

**STATE OF ILLINOIS
DEPARTMENT OF TRANSPORTATION**

**INDEX OF SHEETS, STANDARDS
AND GENERAL NOTES**

SCALE: SHEET 1 OF 1 SHEETS STA. TO STA.

F.A.P. RTE.	SECTION	COUNTY	TOTAL SHEETS	SHEET NO.
VAR	(51-23,3-2,2-2,2)RS-2	LAWRENCE	36	2
CONTRACT NO. 74C45				

SUMMARY OF QUANTITIES				80% FED 20% STATE		NHPP	STP
				CONSTRUCTION CODE		MAINLINE	RAMPS
CODE NO.	ITEM	UNIT	TOTAL QUANTITY	ROADWAY	ROADWAY	RURAL	RURAL
				0005	0005		
40600290	BITUMINOUS MATERIALS (TACK COAT)	POUND	125732	115150		10582	
40600370	LONGITUDINAL JOINT SEALANT	FOOT	64109	54041		10068	
40600990	TEMPORARY RAMP	SQ YD	93	80		13	
40604164	POLYMERIZED HOT-MIX ASPHALT SURFACE COURSE, IL-9.5, MIX "D", N90	TON	15647	14330		1317	
44000155	HOT-MIX ASPHALT SURFACE REMOVAL, 1 1/2"	SQ YD	186269	170592		15677	
44201798	CLASS D PATCHES, TYPE I, 13 INCH	SQ YD	1	0		1	
44201803	CLASS D PATCHES, TYPE II, 13 INCH	SQ YD	487	403		84	
44201807	CLASS D PATCHES, TYPE III, 13 INCH	SQ YD	50	50		0	
44201809	CLASS D PATCHES, TYPE IV, 13 INCH	SQ YD	25	25		0	
48102100	AGGREGATE WEDGE SHOULDER, TYPE B	TON	2012	1897		115	
64200108	SHOULDER RUMBLE STRIPS, 8 INCH	FOOT	99926	99926		0	
66700205	PERMANENT SURVEY MARKERS, TYPE I	EACH	6	6		0	
67000400	ENGINEER'S FIELD OFFICE, TYPE A	CAL MO	3	2.7		0.3	
67000600	ENGINEER'S FIELD LABORATORY	CAL MO	3	2.7		0.3	

SUMMARY OF QUANTITIES				80% FED 20% STATE		NHPP	STP
				CONSTRUCTION CODE		MAINLINE	RAMPS
CODE NO.	ITEM	UNIT	TOTAL QUANTITY	ROADWAY	ROADWAY	RURAL	RURAL
				0005	0005		
67100100	MOBILIZATION	L SUM	1	0.9		0.1	
70100450	TRAFFIC CONTROL AND PROTECTION, STANDARD 701201	L SUM	1	0.9		0.1	
70100460	TRAFFIC CONTROL AND PROTECTION, STANDARD 701306	L SUM	1	0.9		0.1	
70102620	TRAFFIC CONTROL AND PROTECTION, STANDARD 701501	L SUM	1	0		1	
70107025	CHANGEABLE MESSAGE SIGN	CAL DA	42	28		14	
70300100	SHORT TERM PAVEMENT MARKING	FOOT	10972	10234		738	
70300150	SHORT TERM PAVEMENT MARKING REMOVAL	SQ FT	1811	1689		122	
* 78000100	THERMOPLASTIC PAVEMENT MARKING - LETTERS AND SYMBOLS	SQ FT	203	203		0	
* 78000200	THERMOPLASTIC PAVEMENT MARKING - LINE 4"	FOOT	21092	21092		0	
* 78000400	THERMOPLASTIC PAVEMENT MARKING - LINE 6"	FOOT	455	455		0	
* 78000600	THERMOPLASTIC PAVEMENT MARKING - LINE 12"	FOOT	623	623		0	
* 78000650	THERMOPLASTIC PAVEMENT MARKING - LINE 24"	FOOT	20	20		0	
* 78001110	PAINT PAVEMENT MARKING - LINE 4"	FOOT	117454	100011		17443	
* 78001140	PAINT PAVEMENT MARKING - LINE 8"	FOOT	250	250		0	

* SPECIALTY ITEM

REV - MS

MODEL: SOQ1 (Sheet)
FILE NAME: c:\p\work\wvitolanorev.niemerg@illinois.gov\0911650\D774C45-shft-SOQ.dgn

USER NAME = andrew.niemerg	DESIGNED -	REVISED -
	DRAWN -	REVISED -
	CHECKED -	REVISED -
PLOT DATE = 12/12/2024	DATE -	REVISED -

STATE OF ILLINOIS
DEPARTMENT OF TRANSPORTATION

SUMMARY OF QUANTITIES

SCALE: SHEET 1 OF 2 SHEETS STA. TO STA.

F.A. RTE.	SECTION	COUNTY	TOTAL SHEETS	SHEET NO.
VAR	(51-23.3-2,2-2,2)RS-2	LAWRENCE	36	3
CONTRACT NO. 74C45				
ILLINOIS FED. AID PROJECT				

SUMMARY OF QUANTITIES

80% FED
20% STATE

NHPP STP

CONSTRUCTION CODE

CODE NO.	ITEM	UNIT	TOTAL QUANTITY	CONSTRUCTION CODE	
				MAINLINE	RAMPS
				ROADWAY 0005	ROADWAY 0005
				RURAL	RURAL
* 78011000	GROOVING FOR RECESSED PAVEMENT MARKING, LETTERS AND SYMBOLS	SQ FT	203	203	0
* 78011025	GROOVING FOR RECESSED PAVEMENT MARKING 5"	FOOT	21092	21092	0
* 78011035	GROOVING FOR RECESSED PAVEMENT MARKING 7"	FOOT	455	455	0
* 78011065	GROOVING FOR RECESSED PAVEMENT MARKING 13"	FOOT	623	623	0
* 78011125	GROOVING FOR RECESSED PAVEMENT MARKING 25"	FOOT	20	20	0
* 78100100	RAISED REFLECTIVE PAVEMENT MARKER	EACH	759	713	46
∅ Z0076600	TRAINEES	HOUR	1500	1500	
78300200	RAISED REFLECTIVE PAVEMENT MARKER REMOVAL	EACH	759	713	46
∅ Z0076604	TRAINEES TRAINING PROGRAM GRADUATE	HOUR	1500	1500	
Z0049799	PROTECTING OR RESETTING SURVEY MARKERS	EACH	4	4	0

* SPECIALTY ITEM

∅ 0042

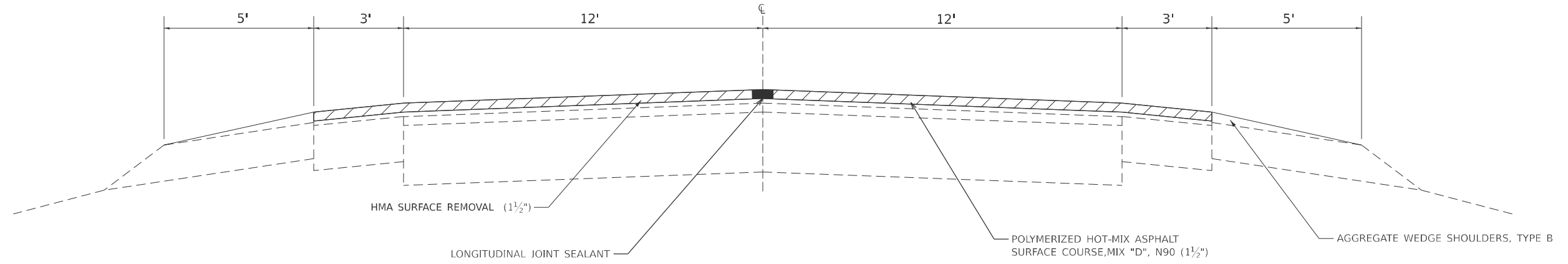
MODEL: SOQ2 (Sheet)
FILE NAME: c:\p\work\pavilionandrew.niemerg@illinois.gov\0911650\774C45-shr-SOQ.dgn

REV - MS

USER NAME = andrew.niemerg	DESIGNED -	REVISED -	STATE OF ILLINOIS DEPARTMENT OF TRANSPORTATION	SUMMARY OF QUANTITIES			F.A. RTE.	SECTION	COUNTY	TOTAL SHEETS	SHEET NO.		
	DRAWN -	REVISED -		SCALE:	SHEET 2	OF 2	SHEETS	STA.	TO STA.	(51-23.3-2,2-2,2)RS-2	LAWRENCE	36	4
	CHECKED -	REVISED -											
PLOT DATE = 11/21/2024	DATE -	REVISED -											
												ILLINOIS FED. AID PROJECT	

TYPICAL CROSS SECTIONS

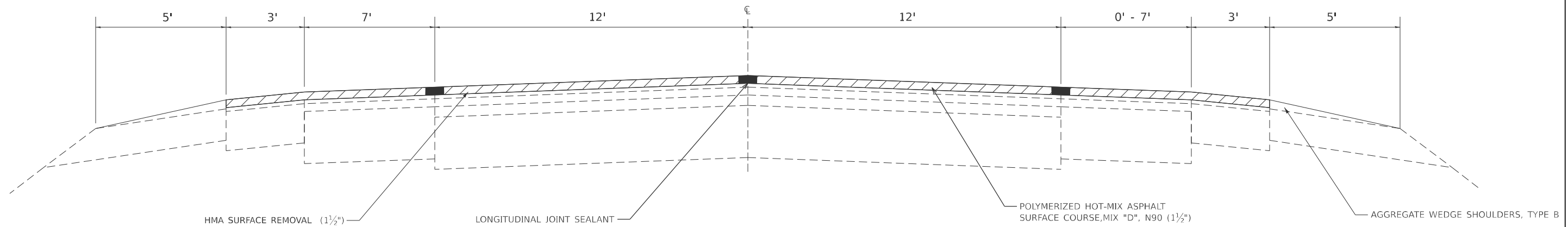
STA 60+08 TO STA 139+79
 STA 152+10 TO STA 349+86
 STA 366+02 TO STA 551+30



RED HILL TURN LANE

TYPICAL CROSS SECTIONS

STA 139+79 TO STA 141+48
 STA 144+83 TO STA 152+10



MODEL: TYPICALS_1 [Sheet]
 FILE NAME: c:\p\work\redhill\andrew.niemerg@illinois.gov\0911650\D774C45-shh-Typical.dgn

USER NAME = andrew.niemerg	DESIGNED -	REVISED -
	DRAWN -	REVISED -
	CHECKED -	REVISED -
PLOT DATE = 11/25/2024	DATE -	REVISED -

STATE OF ILLINOIS
DEPARTMENT OF TRANSPORTATION

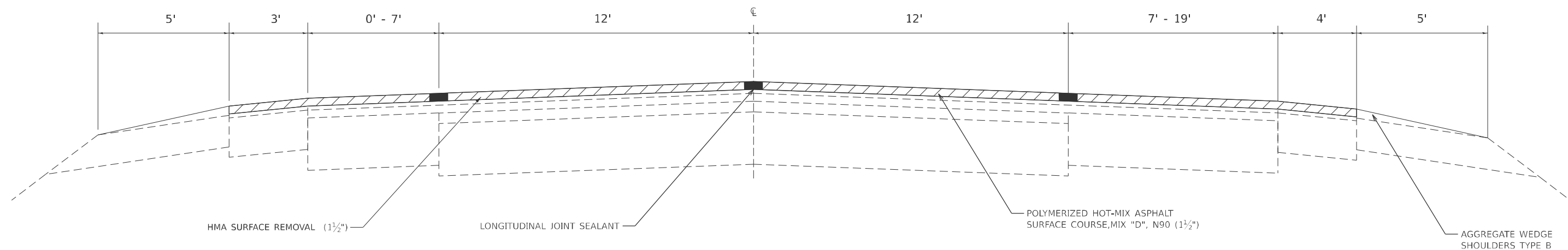
TYPICAL CROSS SECTIONS

SCALE: SHEET 1 OF 4 SHEETS STA. TO STA.

F.A. RTE.	SECTION	COUNTY	TOTAL SHEETS	SHEET NO.
VAR	(51-23.3-2,2-2,2)RS-2	LAWRENCE	36	5
CONTRACT NO. 74C45				
ILLINOIS		FED. AID PROJECT		

RED HILL TURN LANE TYPICAL CROSS SECTIONS

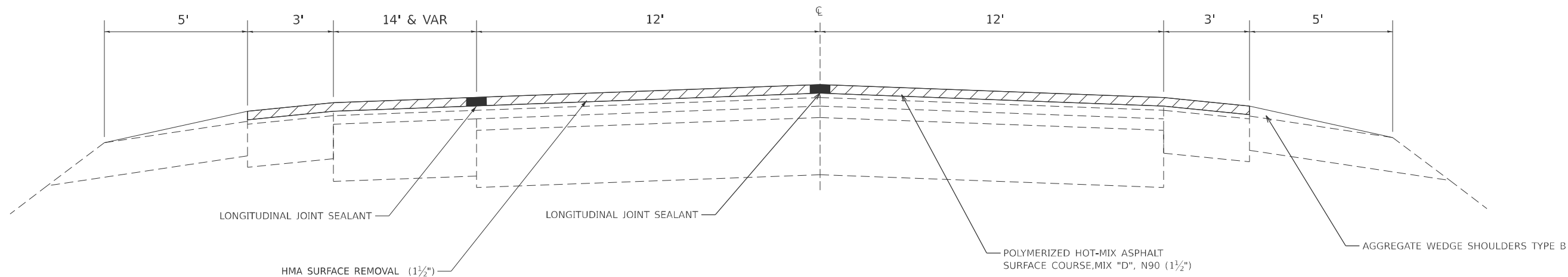
STA 141+48 TO STA 144+83



BRIDGEPORT TURN LANE TYPICAL CROSS SECTIONS

STA 349+86 TO STA 356+09

STA 359+07 TO STA 366+02



MODEL: TYPICALS_2 (Sheet)
FILE NAME: c:\p\work\74c45\andrew.niemerg@illinois.gov\0911650\774c45-shr-typical.dgn

USER NAME = andrew.niemerg	DESIGNED -	REVISED -
	DRAWN -	REVISED -
	CHECKED -	REVISED -
PLOT DATE = 11/25/2024	DATE -	REVISED -

**STATE OF ILLINOIS
DEPARTMENT OF TRANSPORTATION**

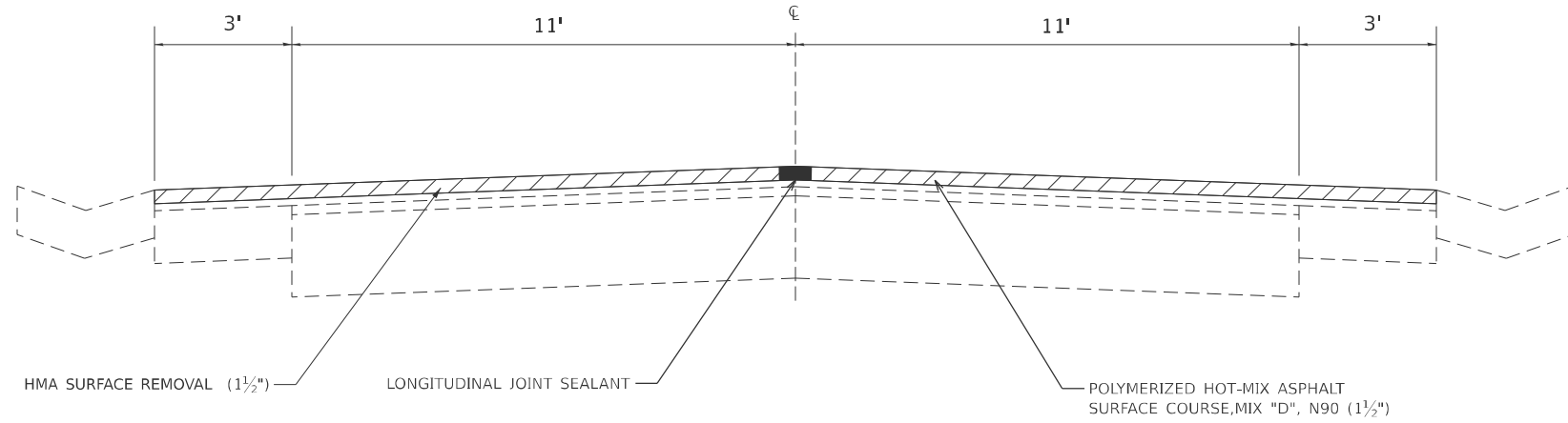
TYPICAL CROSS SECTIONS

SCALE: SHEET 2 OF 4 SHEETS STA. TO STA.

F.A. RTE.	SECTION	COUNTY	TOTAL SHEETS	SHEET NO.
VAR	(51-23.3-2,2-2,2)RS-2	LAWRENCE	36	6
CONTRACT NO. 74C45				
		ILLINOIS	FED. AID PROJECT	

TYPICAL CROSS SECTIONS

STA 30+30 TO STA 36+50 (RAMP A)



MODEL: TYPICALS_4 [Sheet]
FILE NAME: c:\p\work\pav\andrew.niemerg@illinois.gov\0911650\774C45-sht-Typical.dgn

USER NAME = andrew.niemerg	DESIGNED -	REVISED -
	DRAWN -	REVISED -
	CHECKED -	REVISED -
PLOT DATE = 11/25/2024	DATE -	REVISED -

**STATE OF ILLINOIS
DEPARTMENT OF TRANSPORTATION**

TYPICAL CROSS SECTIONS

SCALE: SHEET 4 OF 4 SHEETS STA. TO STA.

F.A. RTE.	SECTION	COUNTY	TOTAL SHEETS	SHEET NO.
VAR	(51-23,3-2,2-2,2)RS-2	LAWRENCE	36	8
CONTRACT NO. 74C45			ILLINOIS FED. AID PROJECT	

RESURFACING SCHEDULE

STATIONING			LENGTH	PAVEMENT WIDTH	SHOULDER WIDTH (LT&RT)	AREA	AREA	BITUMINOUS MATERIALS (TACK COAT)	LONGITUDINAL JOINT SEALANT	TEMPORARY RAMP	POLYMERIZED HOT-MIX ASPHALT SURFACE COURSE, IL-9.5,MIX"D",N90	HOT-MIX ASPHALT SURFACE REMOVAL, 1 1/2"	SHOULDER RUMBLE STRIPS, 8"
STATION	TO	STATION	FEET	FEET	FEET	SQ FT	SQ YD	40600290	40600370	40600370	40604164	44000155	64200108
STATION	TO	STATION	FEET	FEET	FEET	SQ FT	SQ YD	POUND	FEET	SQ YD	TON	SQ YD	FEET
US 50													
60+06.00		70+41.13	1035.13	24	6.0	31053.9	3450.4	2329.0	1035.1	26.7	289.8	3450.4	2070.3
70+41.13		73+08.88	267.75	BRIDGE OMISSION									
73+08.88		139+79.00	6670.12	24	6.0	200103.6	22233.7	15007.8	6670.1	13.3	1867.6	22233.7	13340.2
139+79.00		152+10.00	1231	VARIES	6.0	54523.0	6058.1	4089.2	3693.0		508.9	6058.1	2462.0
152+10.00		192+90.50	4080.5	24	6.0	122415.0	13601.7	9181.1	4080.5		1142.5	13601.7	8161.0
192+50.50	=	192+83.00	STATION EQUATION										
192+83.00		349+86.00	1570.3	24	6.0	471090.0	52343.3	35331.8	15703.0		4396.8	52343.3	31406.0
349+86.00		366+02.00	1616	VARIES	6.0	61696.8	6855.2	4627.3	3232.0		575.8	6855.2	3232.0
366+02.00		494+49.74	12847.74	24	6.0	385432.2	42825.8	28907.4	12847.7		3597.4	42825.8	25695.5
494+49.74	=	1494+49.74	STATION EQUATION										
1494+49.74		1509+06.00	1456.26	24	6.0	43687.8	4854.2	3276.6	1456.3		407.8	4854.2	2912.5
1509+06.00		1514+14.00	508	VARIES	6.0	20866.9	2318.5	1565.0	508.0		194.8	2318.5	1016.0
1514+14.00		1519+02.00	488	24	6.0	14640.0	1626.7	1098.0	488.0	13.3	136.6	1626.7	976.0
1519+02.00		1522+28.00	326	BRIDGE OMISSION									
1522+28.00		1538+68.25	1640.25	24	6.0	49207.5	5467.5	3690.6	1640.3	13.3	459.3	5467.5	3280.5
1538+68.25	=	537+95.53	STATION EQUATION										
537+95.53		551+39.00	1343.47	24	6.0	40304.1	4478.2	3022.8	1343.5		376.2	4478.2	2686.9
537+95.53		546+55.00	859.47	24	6.0	25784.1	2864.9	1933.8	859.5		240.7	2864.9	1718.9
546+55.00		546+90.00	35	24	6.0	1050.0	116.7	78.8	35.0		9.8	116.7	70.0
546+90.00		551+39.00	449.0	24	6.0	13470.0	1496.7	1010.3	449.0	13.3	125.7	1496.7	898.0
US 50 TOTAL =								115150	54041	80	14330	170592	99926
US 50 BUSINESS RAMP A													
0+13.50		1+35.00	121.5	22.0	6.0	3402.0	378.0	255.2	243.0		31.8	378.0	
1+35.00		22+61.00	2126.0	22.0	6.0	59528.0	6614.2	4464.6	4252.0		555.6	6614.2	
22+61.00		28+84.00	623.0	VARIES	6.0	22966.0	2551.8	1722.5	1246.0		214.3	2551.8	
28+84.00		29+95.00	111.0	22.0	6.0	3108.0	345.3	233.1	222.0		29.0	345.3	
29+95.00		30+30.00	35.0	22.0	6.0	980.0	108.9	73.5	70.0		9.1	108.9	
30+30.00		37+01.00	671.0	22.0	6.0	18788.0	2087.6	1409.1	1342.0	12.2	175.4	2087.6	
US 50 BUSINESS RAMP B													
0+00.00		13+46.37	1346.4	18.0	6.0	32312.9	3590.3	2423.5	2692.7		301.6	3590.3	
US 50 BUS TOTAL =								10582	10068	13	1317	15677	0
PROJECT TOTAL =								125732	64109	93	15647	186269	99926

MODEL: Schedules (Sheet)
FILE NAME: c:\p\work\pvt\olofandrew.niemerg@illinois.gov\0911650\774C45-shr-Schedules.dgn

USER NAME = andrew.niemerg	DESIGNED -	REVISED -
	DRAWN -	REVISED -
	CHECKED -	REVISED -
PLOT DATE = 11/25/2024	DATE -	REVISED -

**STATE OF ILLINOIS
DEPARTMENT OF TRANSPORTATION**

SCHEDULE OF QUANTITIES

SCALE: SHEET 1 OF 3 SHEETS STA. TO STA.

F.A. RTE.	SECTION	COUNTY	TOTAL SHEETS	SHEET NO.
VAR	(51-23.3-2,2-2,2)RS-2	LAWRENCE	36	9
CONTRACT NO. 74C45				
ILLINOIS		FED. AID PROJECT		

PAVEMENT MARKING SCHEDULE

STATIONING	LENGTH	NO PASSING ZONE	PAINT PAVEMENT MARKING - LINE 4"	PAINT PAVEMENT MARKING - LINE 8" WHITE	THERMOPLASTIC PAVEMENT MARKING - LETTERS AND SYMBOLS	THERMOPLASTIC PAVEMENT MARKING - LINE 4"	THERMOPLASTIC PAVEMENT MARKING - LINE 6"	THERMOPLASTIC PAVEMENT MARKING - LINE 12"	THERMOPLASTIC PAVEMENT MARKING - LINE 24"	GROOVING FOR RECESSED PAVEMENT MARKING, LETTERS AND SYMBOLS	GROOVING FOR RECESSED PAVEMENT MARKING 5"	GROOVING FOR RECESSED PAVEMENT MARKING 7"	GROOVING FOR RECESSED PAVEMENT MARKING 13"	GROOVING FOR RECESSED PAVEMENT MARKING 25"	SHORT-TERM PAVEMENT MARKING	SHORT TERM PAVEMENT REMOVAL	RAISED REFLECTIVE PAVEMENT MARKER	RAISED REFLECTIVE PAVEMENT REMOVAL	
			78001110	78001140	78000100	78000200	78000400	78000600	78000650	78011000	78011025	78011035	78011065	78011125	70300100	70300150	78100100	78300200	
STATION	TO	STATION	FEET			SQ FT	FEET	FEET	FEET	SQ FT	FEET	FEET	FEET	FEET	FEET	SQ FT	EACH	EACH	
US 50																			
60+06.00	TO	70+41.00	1035.0		WB NPZ		3364												
70+41.00		73+09.00	268.0		BRIDGE OMISSION														
73+09.00	TO	113+80.00	4071.0		SKIP DASH		9160												
113+80.00	TO	118+67.00	487.0		EB NPZ		1583												
118+67.00	TO	134+79.00	1612.0		SKIP DASH		3627												
134+79.00	TO	138+99.00	420.0		EB NPZ			1365.0			1365.0								
138+99.00	TO	139+79.00	80.0		DOUBLE NPZ			320.0											
139+79.00	TO	143+29.00	350.0		GORE AREA			2100.0			2100.0		122.0						
143+29.00	TO	144+44.00	115.0		TURN LANE / GORE AREA	46.8		690.0	115.0		60.0	46.8	690.0	115.0	60.0				
144+44.00	TO	144+59.00	15.0		GORE AREA			90.0			12.0		90.0		12.0				
144+59.00	TO	145+30.00	71.0		EDGE LINE/STOP BAR			96.0				20.0	96.0			20.0			
145+30.00	TO	146+80.00	150.0		TURN LANE	46.8				46.8									
146+80.00	TO	152+10.00	530.0		GORE AREA			3180.0			145.0		3180.0		145.0				
152+10.00	TO	152+90.00	80.0		DOUBLE NPZ			320.0					320.0						
152+90.00	TO	157+10.00	420.0		WB NPZ			1365.0					1365.0						
157+10.00	TO	192+90.50	3580.5		SKIP DASH		8056												
192+90.50	BK=	192+83.00 AH			STATION EQUATION														
192+83.00	TO	344+86.00	15203.0		SKIP DASH		34207												
344+86.00	TO	349+06.00	420.0		EB NPZ			1365.0					1365.0						
349+06.00	TO	349+86.00	80.0		DOUBLE NPZ			320.0					320.0						
349+86.00	TO	355+16.00	530.0		GORE AREA			3180.0		103.0			3180.0		103.0				
355+16.00	TO	355+46.00	30.0		TURN LANE/GORE AREA	15.6		180.0	30.0		15.6		180.0	30.0					
355+46.00	TO	356+61.00	115.0		TURN LANE	31.2		293.0	115.0		31.2		293.0	115.0					
356+61.00	TO	357+47.00	86.0		INTERSECTION														
357+47.00	TO	359+42.00	195.0		TURN LANE	62.4		583.0	195.0				583.0	195.0					
359+42.00	TO	366+02.00	660.0		GORE AREA			3960.0		181.0			3960.0	181.0					
366+02.00	TO	366+82.00	80.0		DOUBLE NPZ			320.0					320.0						
366+82.00	TO	371+02.00	420.0		WB NPZ			1365.0					1365.0						
371+02.00	TO	494+49.74	12347.7		SKIP DASH		27782												
494+49.74	BK=	1494+49.74 AH			STATION EQUATION														
1494+49.74	TO	1512+95.00	1845.3		SKIP DASH		4152												
1512+95.00	TO	1515+45.00	250.0		SKIP DASH/GORE AREA	250		563											
1515+45.00	TO	1519+02.00	357.0		SKIP DASH		803												
1519+02.00		1522+28.00			BRIDGE OMISSION														
1522+28.00		1538+68.25	1640.3		SKIP DASH		3691												
1538+68.25	BK=	537+95.35 AH			STATION EQUATION														
537+95.35	TO	551+39.36	1344.0		SKIP DASH		3024												
			US 50 TOTAL =	100011	250	203	21092	455	623	20	203	21092	455	623	20	10234	1689	713	713
US 50 BUS RAMP A																			
0+13.50		21+35.00	2121.5		DBL NPZ		8486												
21+35.00		22+60.00	125.0		DBL NPZ & GORE		500												
22+60.00		37+01.00	1441.0		DBL NPZ		5764												
US 50 BUS RAMP B																			
0+00.00		0+90.00	90.0		EDGE LINE & GORE		180												
0+90.00		12+20.00	1130.0		EDGE LINES		2260												
12+20.00		13+46.37	126.4		EDGE LINE & GORE		253												
			US BUS 50 TOTAL =	17443	0	0	0	0	0	0	0	0	0	0	0	738	122	46	46
			PROJECT TOTAL =	117454	250	203	21092	455	623	20	203	21092	455	623	20	10972	1811	759	759

MODEL: Schedules-1 [Sheet]
FILE NAME: c:\p\work\74c45-shs-Schedules.dgn

USER NAME = andrew.niemerg	DESIGNED -	REVISED -
	DRAWN -	REVISED -
	CHECKED -	REVISED -
PLOT DATE = 11/25/2024	DATE -	REVISED -

STATE OF ILLINOIS
DEPARTMENT OF TRANSPORTATION

SCHEDULE OF QUANTITIES

SCALE: SHEET 2 OF 3 SHEETS STA. TO STA.

F.A. RTE.	SECTION	COUNTY	TOTAL SHEETS	SHEET NO.
VAR	(51-23.3-2,2-2,2)RS-2	LAWRENCE	36	10
CONTRACT NO. 74C45				
ILLINOIS FED. AID PROJECT				

AGGREGATE WEDGE SHOULDER					
STATIONING		LENGTH	WIDTH LT/RT	AGGREGATE WEDGE SHOULDER, TYPE B	
				48102100	
STATION	TO	STATION	FEET	FEET	TON
US 50					
60+06.00		70+41.13	1035.0	5	39
70+41.13		73+08.88	BRIDGE		
73+08.88		139+79.00	6670.0	5	253
139+79.00		152+10.00	1231.0	5	47
152+10.00		192+90.50	4081.0	5	155
192+50.50	=	192+83.00	STATION EQUATION		
192+83.00		349+86.00	15703.0	5	596
349+86.00		366+02.00	1616.0	5	61
366+02.00		494+49.74	12848.0	5	488
494+49.74	=	1494+49.74	STATION EQUATION		
1494+49.74		1509+06.00	1456.0	5	55
1509+06.00		1514+14.00	508.0	5	19
1514+14.00		1519+02.00	488.0	5	19
1519+02.00		1522+28.00	BRIDGE		
1522+28.00		1538+68.25	1640.0	5	62
1538+68.25	=	537+95.53	STATION EQUATION		
537+95.53		551+39.00	1343.0	5	51
537+95.53		546+55.00	859.0	5	33
546+55.00		546+90.00	35.0	5	1
546+90.00		551+39.00	449.0	5	17
US 50 TOTAL					1897

US 50 BUSINESS RAMP A					
0+13.50		1+35.00	122.0	3	3
1+35.00		22+61.00	2126.0	3	48
22+61.00		28+84.00	623.0	3	14
28+84.00		29+95.00	111.0	3	3
29+95.00		30+30.00	35.0	3	1
30+30.00		37+01.00	671.0	3	15
US 50 BUSINESS RAMP B					
0+00.00	TO	13+46.37	1346.0	3	31
US 50 BUS TOTAL					115

PROJECT TOTAL = 2012

PERMANENT SURVEY MARKERS						PROPOSED PROTECT OR RESET
PT#	NORTHING	EASTING	STATION	OFFSET	CODE	
1100	752317.882	1120555.596	82+21.58	0.0'	818-POT MAG NAIL	TYPE I - NO VAULT
1101	752674.148	1161737.35	1494+58.43	0.0'	824-POT MAG NAIL	TYPE I - NO VAULT
1102	752716.257	1162435.052	1501+57.34	0.0'	824-PC MAG NAIL	TYPE I - NO VAULT
1103	753669.156	1164952.469	1528+90.50	0.0'	824-PT MAG NAIL	TYPE I - NO VAULT
1104	753785.39	1165101.124	1530+79.17	0.0'	824-PC MAG NAIL	TYPE I - NO VAULT
1105	754029.028	1165412.905	1534+74.92	16.59' LT.	821-PI IRON PIN	TYPE I - NO VAULT
1106	754215.383	1165762.05	1538+68.69BK=1537+97.04AH	0.0'	824-STA EQ MAG NAIL	TYPE I - NO VAULT

MODEL: Schedule-2 [Sheet]
FILE NAME: c:\p\work\pvt\olliandrew.niemerg@illinois.gov\0911650\74C45-sht-Schedules.dgn

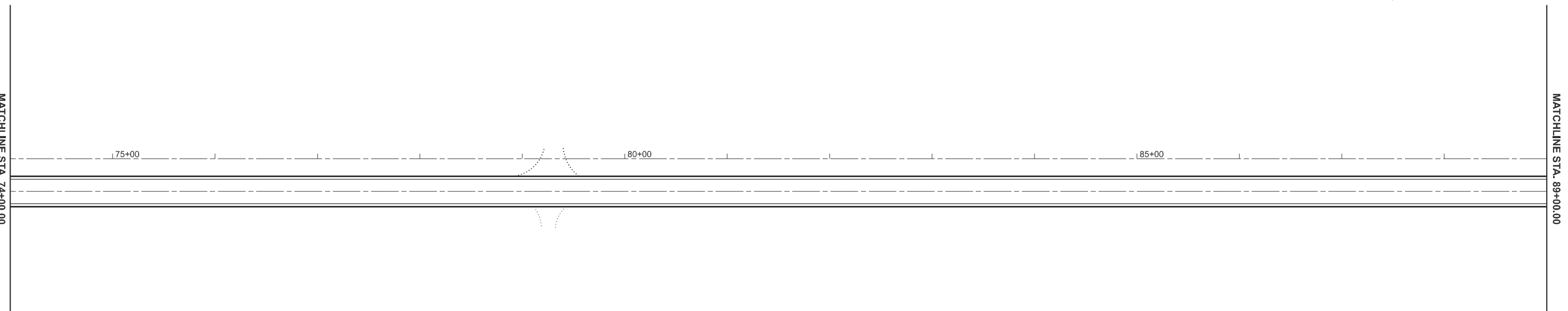
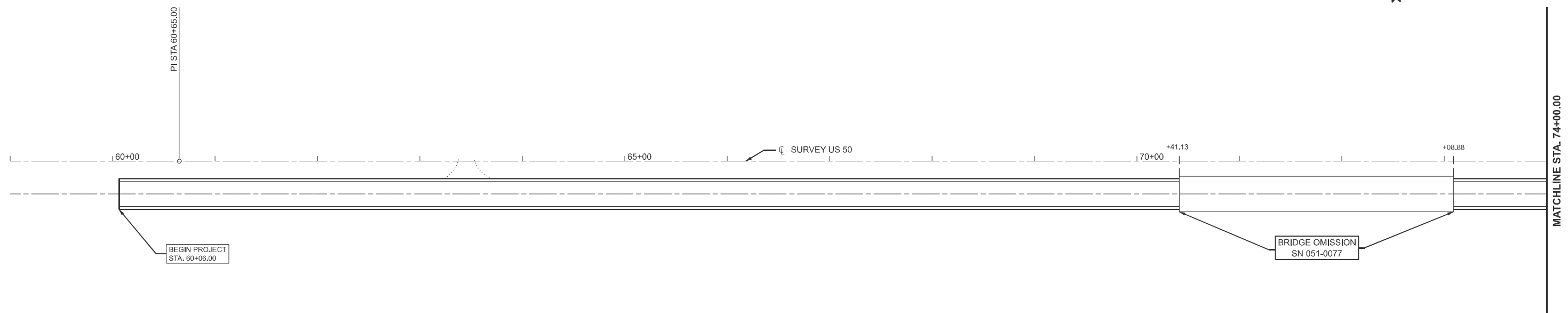
USER NAME = andrew.niemerg	DESIGNED -	REVISED -
	DRAWN -	REVISED -
	CHECKED -	REVISED -
PLOT DATE = 11/25/2024	DATE -	REVISED -

STATE OF ILLINOIS
DEPARTMENT OF TRANSPORTATION

SCHEDULE OF QUANTITIES

SCALE: SHEET 3 OF 3 SHEETS STA. TO STA.

F.A. RTE.	SECTION	COUNTY	TOTAL SHEETS	SHEET NO.
VAR	(51-23,3-2,2-2,2Z)RS-2	LAWRENCE	36	11
CONTRACT NO. 74C45				
ILLINOIS			FED. AID PROJECT	



MODEL: US50BL - Plan 1 (Sheet)
 FILE NAME: c:\p\work\p\101andrew.niemerg@illinois.gov\0911650\D774C45-shf-Plan.dgn

USER NAME = andrew.niemerg	DESIGNED -	REVISED -
	DRAWN -	REVISED -
	CHECKED -	REVISED -
PLOT DATE = 11/25/2024	DATE -	REVISED -

**STATE OF ILLINOIS
 DEPARTMENT OF TRANSPORTATION**

PLAN SHEET

SCALE: 1"=50' SHEET 1 OF 20 SHEETS STA. 59+00.00 TO STA. 89+00.00

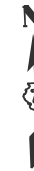
F.A.P RTE.	SECTION	COUNTY	TOTAL SHEETS	SHEET NO.
VAR	(51-23,3-2,2-2,2Z)RS-2	LAWRENCE	36	12
CONTRACT NO. 74C45				
ILLINOIS		FED. AID PROJECT		



MATCHLINE STA. 104+00.00

MATCHLINE STA. 89+00.00

90+00 95+00 100+00 SURVEY US 50



MATCHLINE STA. 119+00.00

MATCHLINE STA. 104+00.00

105+00 110+00 115+00

MODEL: US50BL - Plan 3 [Sheet]
FILE NAME: c:\p\work\p\willandrew.niemerg@illinois.gov\0911650\774C45-sh+Plan.dgn

USER NAME = andrew.niemerg	DESIGNED -	REVISED -
	DRAWN -	REVISED -
	CHECKED -	REVISED -
PLOT DATE = 12/11/2024	DATE -	REVISED -

**STATE OF ILLINOIS
DEPARTMENT OF TRANSPORTATION**

PLAN SHEET

SCALE: 1"=50' SHEET 2 OF 20 SHEETS STA. 89+00.00 TO STA. 119+00.00

F.A.P RTE.	SECTION	COUNTY	TOTAL SHEETS	SHEET NO.
VAR	(51-23.3-2,2-2,2Z)RS-2	LAWRENCE	36	13
CONTRACT NO. 74C45				
ILLINOIS		FED. AID PROJECT		

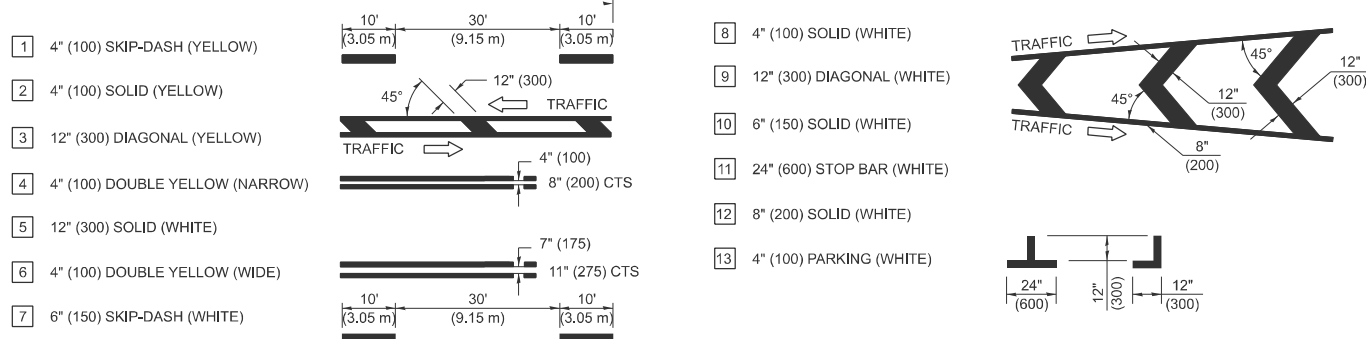


MATCHLINE STA. 119+00.00

MATCHLINE STA. 134+00.00

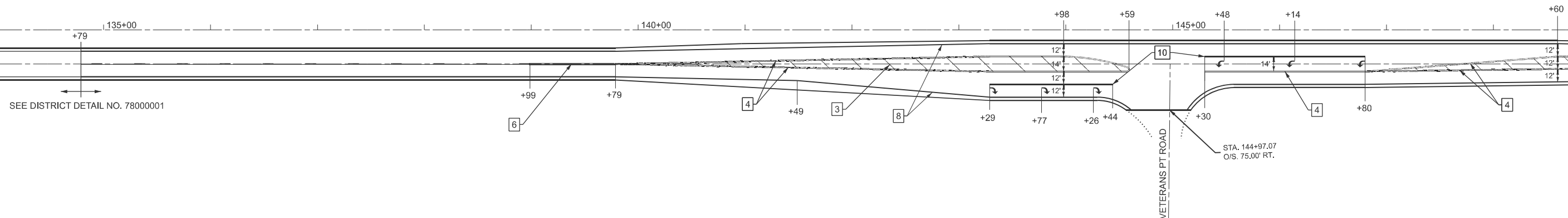
120+00 125+00 130+00 SURVEY US 50

PAVEMENT MARKING LEGEND



MATCHLINE STA. 134+00.00

MATCHLINE STA. 149+00.00



MODEL: US50BL - Plan 5 (Sheet)
FILE NAME: c:\pwworking\andrew.niemerg@illinois.gov\d0911650\174c45-shp+Plan.dgn

USER NAME = andrew.niemerg	DESIGNED -	REVISED -
	DRAWN -	REVISED -
	CHECKED -	REVISED -
PLOT DATE = 12/11/2024	DATE -	REVISED -

STATE OF ILLINOIS
DEPARTMENT OF TRANSPORTATION

PLAN SHEET

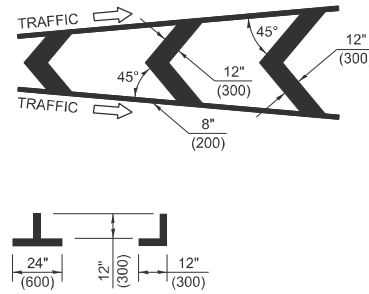
SCALE: 1"=50' SHEET 3 OF 20 SHEETS STA. 119+00.00 TO STA. 149+00.00

F.A.P. RTE.	SECTION	COUNTY	TOTAL SHEETS	SHEET NO.
VAR	(51-23.3-2,2-2,2Z)RS-2	LAWRENCE	36	14
CONTRACT NO. 74C45				
ILLINOIS FED. AID PROJECT				

PAVEMENT MARKING LEGEND

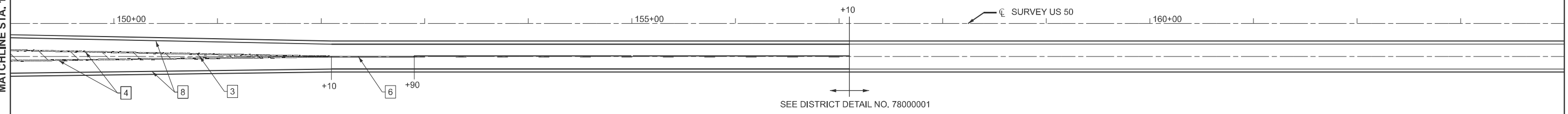
- 1 4" (100) SKIP-DASH (YELLOW)
- 2 4" (100) SOLID (YELLOW)
- 3 12" (300) DIAGONAL (YELLOW)
- 4 4" (100) DOUBLE YELLOW (NARROW)
- 5 12" (300) SOLID (WHITE)
- 6 4" (100) DOUBLE YELLOW (WIDE)
- 7 6" (150) SKIP-DASH (WHITE)

- 8 4" (100) SOLID (WHITE)
- 9 12" (300) DIAGONAL (WHITE)
- 10 6" (150) SOLID (WHITE)
- 11 24" (600) STOP BAR (WHITE)
- 12 8" (200) SOLID (WHITE)
- 13 4" (100) PARKING (WHITE)



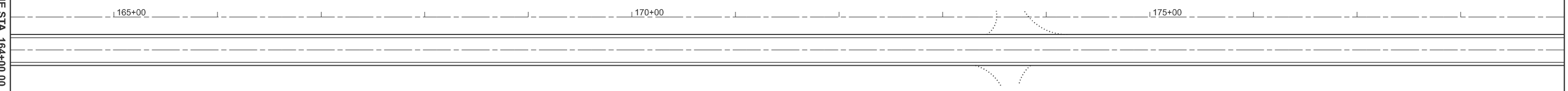
MATCHLINE STA. 149+00.00

MATCHLINE STA. 164+00.00



MATCHLINE STA. 164+00.00

MATCHLINE STA. 179+00.00



MODEL: I:\S5\0BL - Plan 7 (Sheet)
FILE NAME: c:\pwwork\pwwork\andrew.niemerg@illinois.gov\0911650\174C45-sh+Plan.dgn

USER NAME = andrew.niemerg	DESIGNED -	REVISED -
	DRAWN -	REVISED -
	CHECKED -	REVISED -
PLOT DATE = 11/25/2024	DATE -	REVISED -

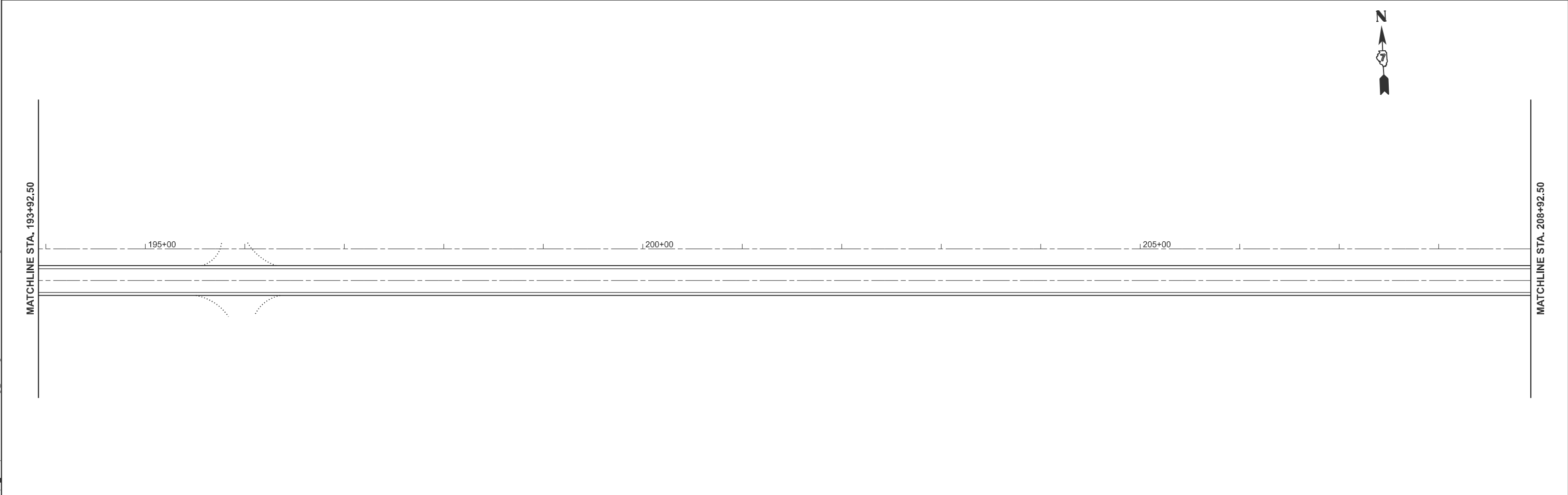
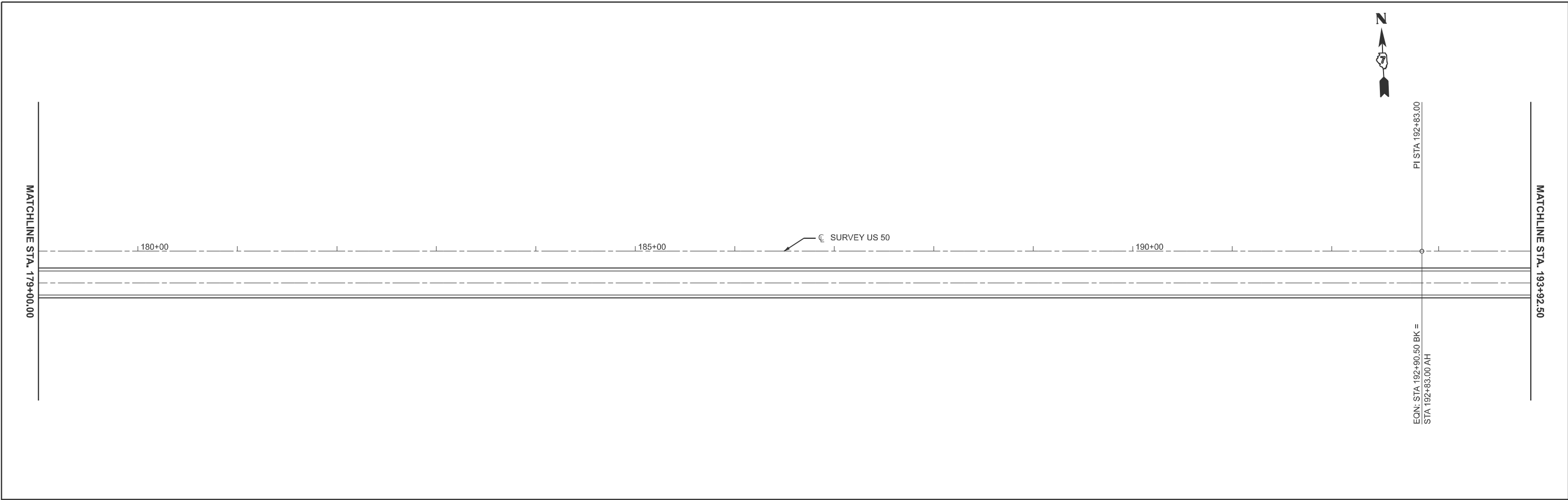
**STATE OF ILLINOIS
DEPARTMENT OF TRANSPORTATION**

PLAN SHEET

SCALE: 1"=50' SHEET 4 OF 20 SHEETS STA. 149+00.00 TO STA. 179+00.00

F.A.P. RTE.	SECTION	COUNTY	TOTAL SHEETS	SHEET NO.
VAR	(51-23.3-2,2-2,2Z)RS-2	LAWRENCE	36	15
CONTRACT NO. 74C45				
ILLINOIS FED. AID PROJECT				

MODEL: US50BL - Plan 9 [Sheet]
 FILE NAME: c:\p\work\pav\andrew.niemerg@illinois.gov\0911650\774C45-shf-Plan.dgn



USER NAME = andrew.niemerg	DESIGNED -	REVISED -
	DRAWN -	REVISED -
	CHECKED -	REVISED -
PLOT DATE = 11/25/2024	DATE -	REVISED -

**STATE OF ILLINOIS
 DEPARTMENT OF TRANSPORTATION**

PLAN SHEET

SCALE: 1"=50' SHEET 5 OF 20 SHEETS STA. 179+00.00 TO STA. 208+92.50 R2

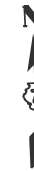
F.A.P RTE.	SECTION	COUNTY	TOTAL SHEETS	SHEET NO.
VAR	(51-23.3-2,2-2,2Z)RS-2	LAWRENCE	36	16
CONTRACT NO. 74C45				
ILLINOIS FED. AID PROJECT				



MATCHLINE STA. 223+92.50

MATCHLINE STA. 208+92.50

210+00 215+00 220+00 SURVEY US 50



MATCHLINE STA. 238+92.50

MATCHLINE STA. 223+92.50

225+00 230+00 235+00

MODEL: I:\S50BL - Plan 11 (Sheet)
FILE NAME: c:\p\work\pwl\andrew.niemerg@illinois.gov\0911650\74C45-shf-Plan.dgn

USER NAME = andrew.niemerg	DESIGNED -	REVISED -
	DRAWN -	REVISED -
	CHECKED -	REVISED -
PLOT DATE = 11/25/2024	DATE -	REVISED -

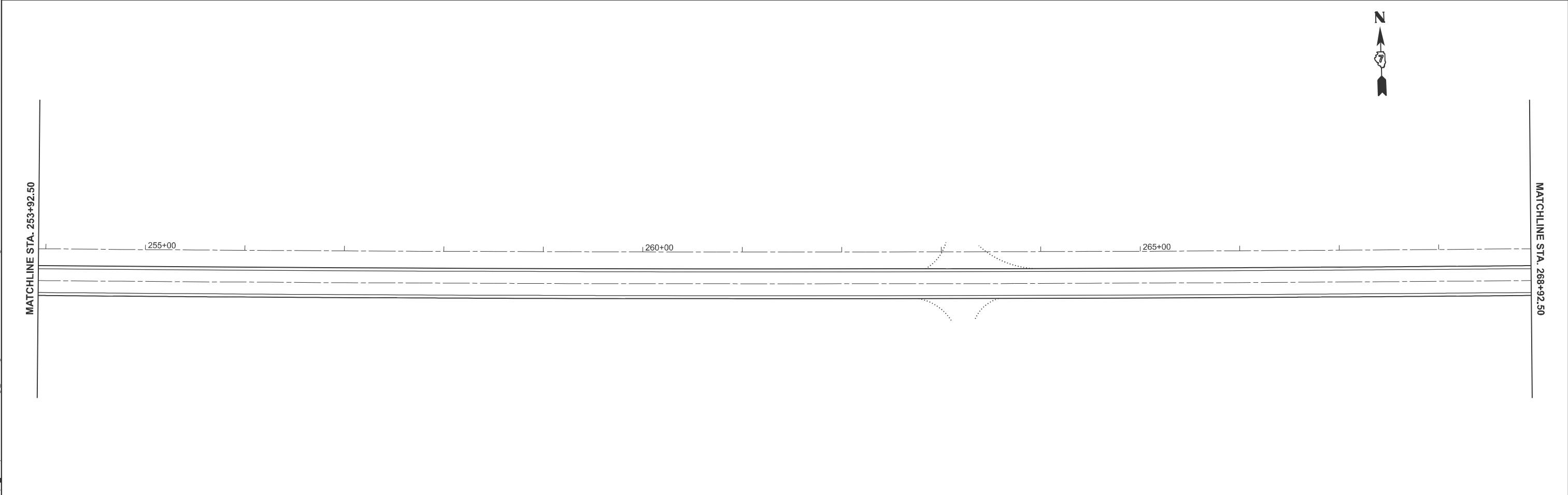
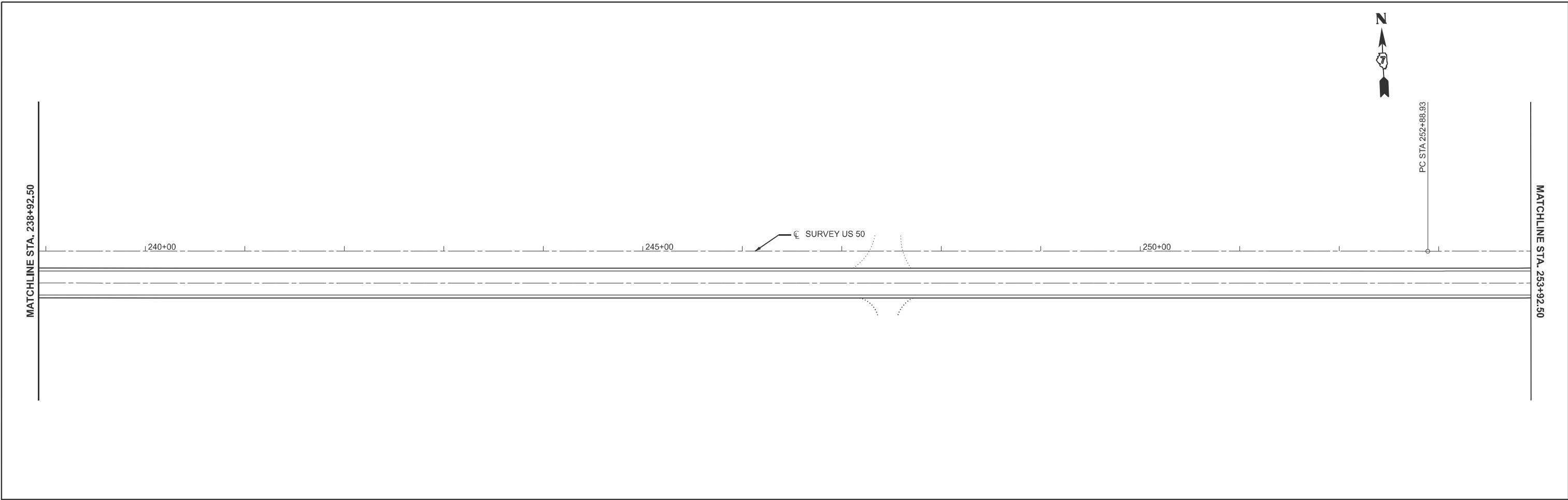
**STATE OF ILLINOIS
DEPARTMENT OF TRANSPORTATION**

PLAN SHEET

SCALE: 1"=50' SHEET 6 OF 20 SHEETS STA. 208+92.50 R2 TO STA. 238+92.50 R2

F.A.P RTE.	SECTION	COUNTY	TOTAL SHEETS	SHEET NO.
VAR	(51-23.3-2,2-2,2Z)RS-2	LAWRENCE	36	17
CONTRACT NO. 74C45			ILLINOIS FED. AID PROJECT	

MODEL: I:\S50BL - Plan 13 [Sheet]
 FILE NAME: c:\p\work\pwl\andrew.niemerg@illinois.gov\0911650\D774C45-shr-Plan.dgn



USER NAME = andrew.niemerg	DESIGNED -	REVISED -
	DRAWN -	REVISED -
	CHECKED -	REVISED -
PLOT DATE = 12/11/2024	DATE -	REVISED -

**STATE OF ILLINOIS
 DEPARTMENT OF TRANSPORTATION**

PLAN SHEET

SCALE: 1"=50' SHEET 7 OF 20 SHEETS STA. 238+92.50 R2 TO STA. 268+92.50 R2

F.A.P. RTE.	SECTION	COUNTY	TOTAL SHEETS	SHEET NO.
VAR	(51-23.3-2,2-2,2Z)RS-2	LAWRENCE	36	18
CONTRACT NO. 74C45			ILLINOIS FED. AID PROJECT	



MATCHLINE STA. 283+92.50

MATCHLINE STA. 268+92.50

270+00 275+00 SURVEY US 50 280+00



MATCHLINE STA. 298+92.50

MATCHLINE STA. 283+92.50

285+00 290+00 295+00

MODEL: I:\S50BL - Plan 15 (Sheet)
FILE NAME: c:\p\work\pwl\andrew.niemerg@illinois.gov\0911650\D774C45-shr-Plan.dgn

USER NAME = andrew.niemerg	DESIGNED -	REVISED -
	DRAWN -	REVISED -
	CHECKED -	REVISED -
PLOT DATE = 12/10/2024	DATE -	REVISED -

**STATE OF ILLINOIS
DEPARTMENT OF TRANSPORTATION**

PLAN SHEET

SCALE: 1"=50' SHEET 8 OF 20 SHEETS STA. 268+92.50 R2 TO STA. 298+92.50 R2

F.A.P RTE.	SECTION	COUNTY	TOTAL SHEETS	SHEET NO.
VAR	(51-23.3-2,2-2,2Z)RS-2	LAWRENCE	36	19
CONTRACT NO. 74C45				
ILLINOIS		FED. AID PROJECT		



MATCHLINE STA. 313+92.50

MATCHLINE STA. 298+92.50

300+00 305+00 310+00 SURVEY US 50



MATCHLINE STA. 328+92.50

MATCHLINE STA. 313+92.50

315+00 320+00 325+00

MODEL: I:\S50BL - Plan 17 (Sheet)
FILE NAME: c:\p\work\pwl\andrew.niemerg@illinois.gov\0911650\774C45-shr-Plan.dgn

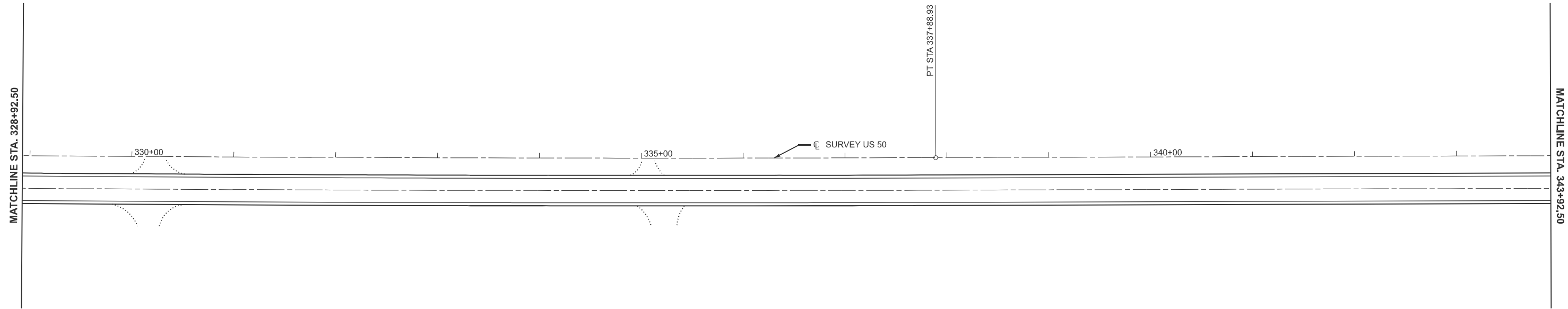
USER NAME = andrew.niemerg	DESIGNED -	REVISED -
	DRAWN -	REVISED -
	CHECKED -	REVISED -
PLOT DATE = 12/10/2024	DATE -	REVISED -

**STATE OF ILLINOIS
DEPARTMENT OF TRANSPORTATION**

PLAN SHEET

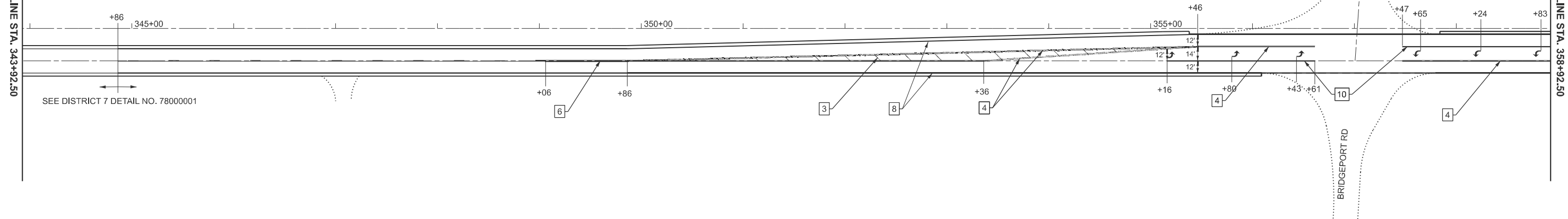
SCALE: 1"=50' SHEET 9 OF 20 SHEETS STA. 298+92.50 R2 TO STA. 328+92.50 R2

F.A.P. RTE.	SECTION	COUNTY	TOTAL SHEETS	SHEET NO.
VAR	(51-23.3-2,2-2,2Z)RS-2	LAWRENCE	36	20
CONTRACT NO. 74C45				
ILLINOIS		FED. AID PROJECT		



PAVEMENT MARKING LEGEND

- | | |
|--|--|
| <ul style="list-style-type: none"> 1 4" (100) SKIP-DASH (YELLOW) 2 4" (100) SOLID (YELLOW) 3 12" (300) DIAGONAL (YELLOW) 4 4" (100) DOUBLE YELLOW (NARROW) 5 12" (300) SOLID (WHITE) 6 4" (100) DOUBLE YELLOW (WIDE) 7 6" (150) SKIP-DASH (WHITE) | <ul style="list-style-type: none"> 8 4" (100) SOLID (WHITE) 9 12" (300) DIAGONAL (WHITE) 10 6" (150) SOLID (WHITE) 11 24" (600) STOP BAR (WHITE) 12 8" (200) SOLID (WHITE) 13 4" (100) PARKING (WHITE) |
|--|--|



MODEL: US50BL - Plan 19 (Sheet)
 FILE NAME: c:\p\work\pav\andrew.niemerg@illinois.gov\0911650\D774C45-shr-Plan.dgn

USER NAME = andrew.niemerg	DESIGNED -	REVISED -
	DRAWN -	REVISED -
	CHECKED -	REVISED -
PLOT DATE = 12/11/2024	DATE -	REVISED -

STATE OF ILLINOIS
DEPARTMENT OF TRANSPORTATION

PLAN SHEET			
SCALE: 1"=50'	SHEET 10	OF 20 SHEETS	STA. 328+92.50 R2 TO STA. 358+92.50 R2

F.A.P. RTE.	SECTION	COUNTY	TOTAL SHEETS	SHEET NO.
VAR	(51-23.3-2,2-2,2Z)RS-2	LAWRENCE	36	21
CONTRACT NO. 74C45				
ILLINOIS FED. AID PROJECT				

PAVEMENT MARKING LEGEND

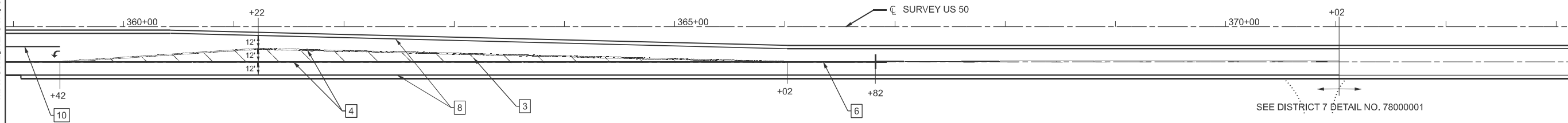
- | | | | |
|--|------------------|--|------|
| <ul style="list-style-type: none"> 1 4" (100) SKIP-DASH (YELLOW) 2 4" (100) SOLID (YELLOW) 3 12" (300) DIAGONAL (YELLOW) 4 4" (100) DOUBLE YELLOW (NARROW) 5 12" (300) SOLID (WHITE) 6 4" (100) DOUBLE YELLOW (WIDE) 7 6" (150) SKIP-DASH (WHITE) |

 | <ul style="list-style-type: none"> 8 4" (100) SOLID (WHITE) 9 12" (300) DIAGONAL (WHITE) 10 6" (150) SOLID (WHITE) 11 24" (600) STOP BAR (WHITE) 12 8" (200) SOLID (WHITE) 13 4" (100) PARKING (WHITE) |
 |
|--|------------------|--|------|



MATCHLINE STA. 358+92.50

MATCHLINE STA. 373+92.50



MATCHLINE STA. 373+92.50

MATCHLINE STA. 388+92.50



MODEL: I:\S50BL - Plan 21 (Sheet)
FILE NAME: c:\pwworkspace\andrew.niemerg@illinois.gov\00911650\174C45-sh+Plan.dgn

USER NAME = andrew.niemerg	DESIGNED -	REVISED -
	DRAWN -	REVISED -
	CHECKED -	REVISED -
PLOT DATE = 12/11/2024	DATE -	REVISED -

**STATE OF ILLINOIS
DEPARTMENT OF TRANSPORTATION**

PLAN SHEET

SCALE: 1"=50' SHEET 11 OF 20 SHEETS STA. 358+92.50 R2 TO STA. 388+92.50 R2

F.A.P. RTE.	SECTION	COUNTY	TOTAL SHEETS	SHEET NO.
VAR	(51-23.3-2,2-2,2Z)RS-2	LAWRENCE	36	22
CONTRACT NO. 74C45				
ILLINOIS FED. AID PROJECT				



MATCHLINE STA. 388+92.50

MATCHLINE STA. 403+92.50

390+00 395+00 SURVEY US 50 400+00

MATCHLINE STA. 403+92.50

MATCHLINE STA. 418+92.50

405+00 410+00 415+00

MODEL: I:\S50BL - Plan 23 (Sheet)
FILE NAME: c:\p\work\pwl\andrew.niemerg@illinois.gov\0911650\774C45-shr-Plan.dgn

USER NAME = andrew.niemerg	DESIGNED -	REVISED -
	DRAWN -	REVISED -
	CHECKED -	REVISED -
PLOT DATE = 11/25/2024	DATE -	REVISED -

**STATE OF ILLINOIS
DEPARTMENT OF TRANSPORTATION**

PLAN SHEET

SCALE: 1"=50' SHEET 12 OF 20 SHEETS STA. 388+92.50 R2 TO STA. 418+92.50 R2

F.A.P RTE.	SECTION	COUNTY	TOTAL SHEETS	SHEET NO.
VAR	(51-23,3-2,2-2,2Z)RS-2	LAWRENCE	36	23
CONTRACT NO. 74C45				
ILLINOIS		FED. AID PROJECT		



MATCHLINE STA. 418+92.50

MATCHLINE STA. 433+92.50

420+00

425+00

☉ SURVEY US 50

430+00

MATCHLINE STA. 433+92.50

MATCHLINE STA. 448+92.50

435+00

440+00

445+00



MODEL: US50BL - Plan 25 (Sheet)
FILE NAME: c:\p\work\pwt\andrew.niemerg@illinois.gov\0911650\774C45-sh+Plan.dgn

USER NAME = andrew.niemerg	DESIGNED -	REVISED -
	DRAWN -	REVISED -
	CHECKED -	REVISED -
PLOT DATE = 12/11/2024	DATE -	REVISED -

**STATE OF ILLINOIS
DEPARTMENT OF TRANSPORTATION**

PLAN SHEET

SCALE: 1"=50' SHEET 13 OF 20 SHEETS STA. 418+92.50 R2 TO STA. 448+92.50 R2

F.A.P. RTE.	SECTION	COUNTY	TOTAL SHEETS	SHEET NO.
VAR	(51-23.3-2,2-2,2Z)RS-2	LAWRENCE	36	24
CONTRACT NO. 74C45			ILLINOIS FED. AID PROJECT	



MATCHLINE STA. 448+92.50

MATCHLINE STA. 463+92.50

450+00 455+00 SURVEY US 50 460+00

MATCHLINE STA. 463+92.50

MATCHLINE STA. 478+92.50

465+00 470+00 475+00



MODEL: I:\S50BL - Plan 27 (Sheet)
FILE NAME: c:\p\work\pwl\andrew.niemerg@illinois.gov\0911650\774C45-shr-Plan.dgn

USER NAME = andrew.niemerg	DESIGNED -	REVISED -
	DRAWN -	REVISED -
	CHECKED -	REVISED -
PLOT DATE = 11/25/2024	DATE -	REVISED -

**STATE OF ILLINOIS
DEPARTMENT OF TRANSPORTATION**

PLAN SHEET

SCALE: 1"=50' SHEET 14 OF 20 SHEETS STA. 448+92.50 R2 TO STA. 478+92.50 R2

F.A.P RTE.	SECTION	COUNTY	TOTAL SHEETS	SHEET NO.
VAR	(51-23.3-2,2-2,2Z)RS-2	LAWRENCE	36	25
CONTRACT NO. 74C45				
ILLINOIS		FED. AID PROJECT		



MATCHLINE STA. 478+92.50

MATCHLINE STA. 493+92.50

480+00 485+00 SURVEY US 50 490+00

MATCHLINE STA. 493+92.50

MATCHLINE STA. 1508+92.50

EQN: STA 494+49.74 BK =
STA 1494+49.74 AH

PC STA 494+49.74
PI STA 1494+49.74

PC STA 1501+57.37



495+00 500+00 SURVEY US 50 505+00
1495+00 1500+00 1505+00

POT STA 0+00.00

PC STA 1+00.98

MODEL: I:\550BL - Plan 29 (Sheet)
FILE NAME: c:\pw\work\pwl\andrew.niemerg@illinois.gov\0911650\774C45-shft-Plan.dgn

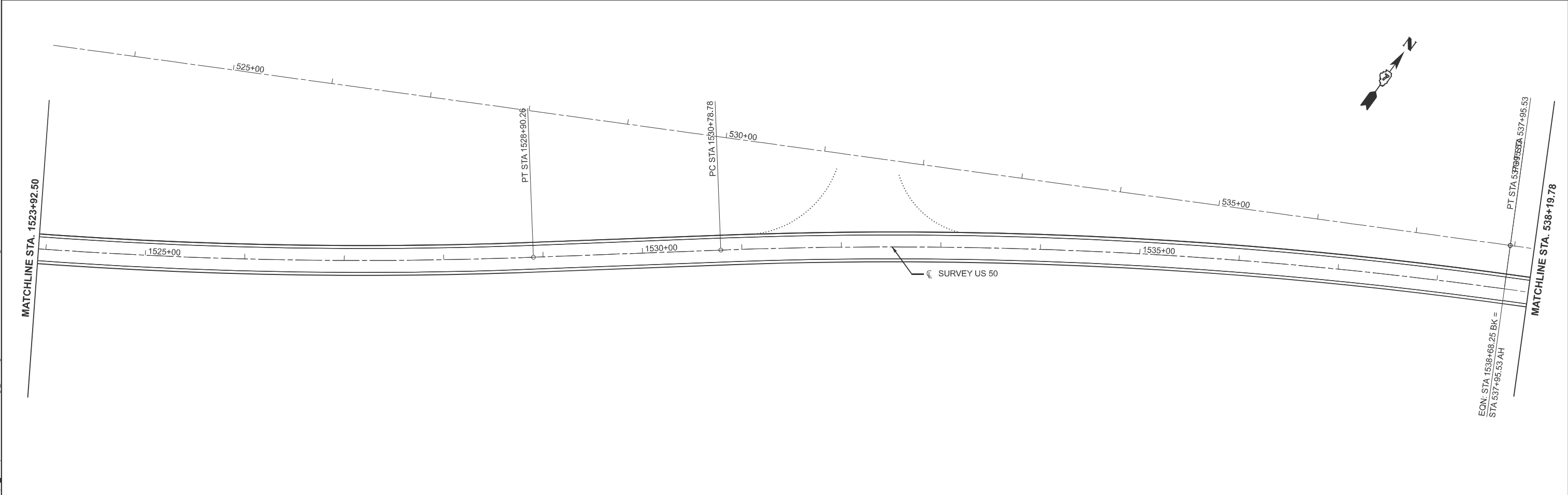
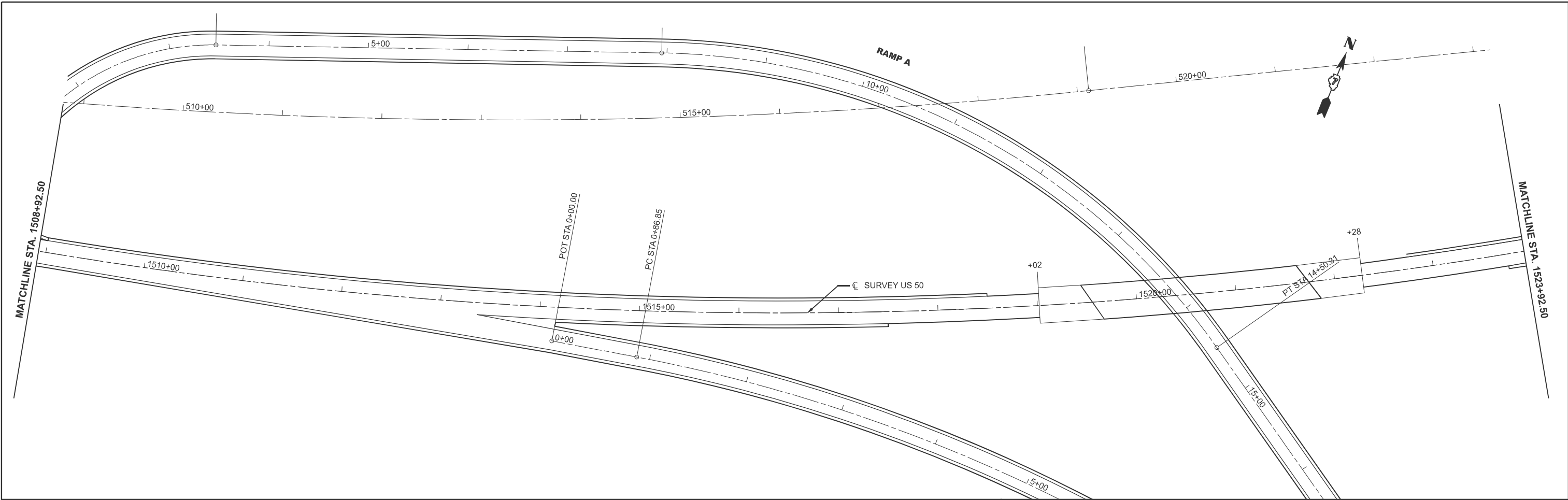
USER NAME = andrew.niemerg	DESIGNED -	REVISED -
	DRAWN -	REVISED -
	CHECKED -	REVISED -
PLOT DATE = 11/25/2024	DATE -	REVISED -

**STATE OF ILLINOIS
DEPARTMENT OF TRANSPORTATION**

PLAN SHEET

SCALE: 1"=50' SHEET 15 OF 20 SHEETS STA. 478+92.50 R2 TO STA. 1508+92.50 R3

F.A.P RTE.	SECTION	COUNTY	TOTAL SHEETS	SHEET NO.
VAR	(51-23.3-2,2-2,2Z)RS-2	LAWRENCE	36	26
CONTRACT NO. 74C45				
ILLINOIS		FED. AID PROJECT		



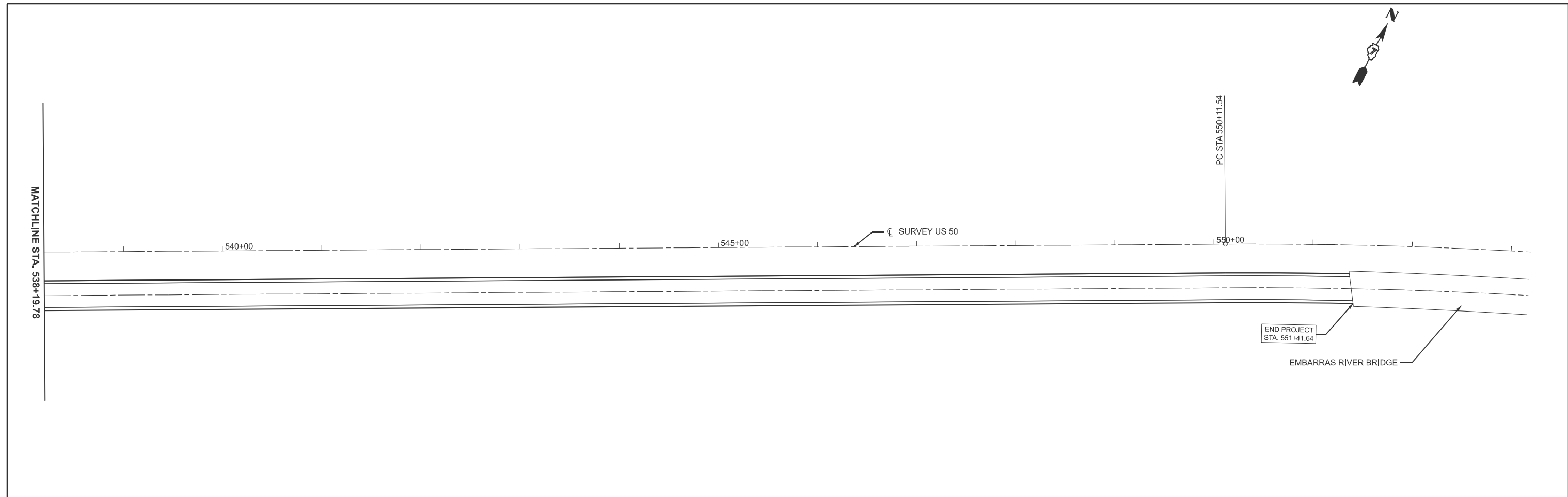
MODEL: I:\550BL - Plan 31 (Sheet)
 FILE NAME: c:\pwwork\pwwork\andrew.niemerg@illinois.gov\0911650\774C45-shr-Plan.dgn

USER NAME = andrew.niemerg	DESIGNED -	REVISED -
	DRAWN -	REVISED -
	CHECKED -	REVISED -
PLOT DATE = 12/11/2024	DATE -	REVISED -

STATE OF ILLINOIS
DEPARTMENT OF TRANSPORTATION

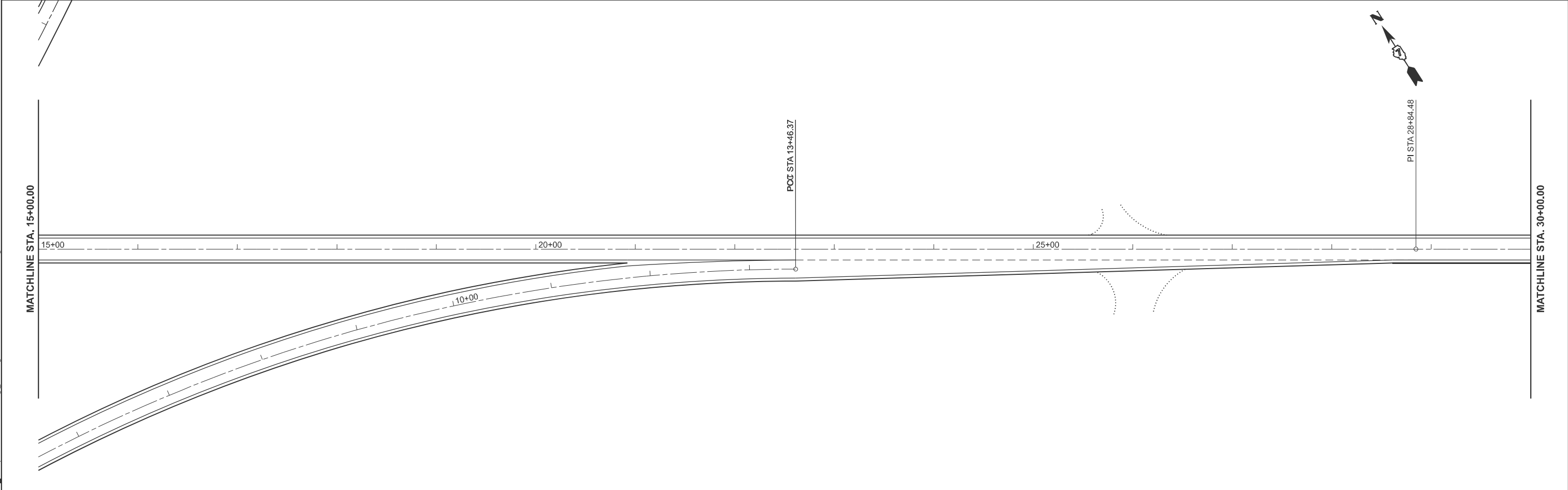
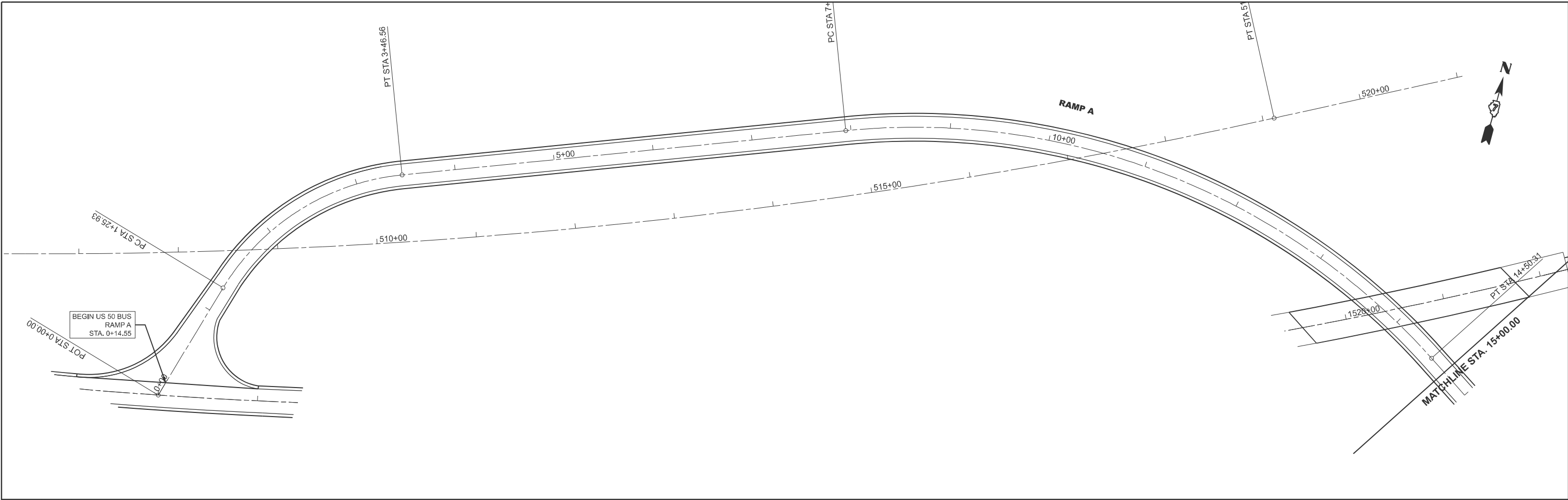
PLAN SHEET
 SCALE: 1"=50' SHEET 16 OF 20 SHEETS STA. 1508+92.50 R3 TO STA. 538+19.78 R4

F.A.P. RTE.	SECTION	COUNTY	TOTAL SHEETS	SHEET NO.
VAR	(51-23.3-2,2-2,2Z)RS-2	LAWRENCE	36	27
CONTRACT NO. 74C45				
ILLINOIS FED. AID PROJECT				



MODEL: I:\S50BL - Plan 33 [Sheet]
 FILE NAME: c:\p\work\pwl\andrew.niemerg@illinois.gov\0911650\774C45-shr-Plan.dgn

USER NAME = andrew.niemerg	DESIGNED -	REVISED -	STATE OF ILLINOIS DEPARTMENT OF TRANSPORTATION	PLAN SHEET			F.A.P RTE.	SECTION	COUNTY	TOTAL SHEETS	SHEET NO.
	DRAWN -	REVISED -		SCALE: 1"=50'	SHEET 17	OF 20 SHEETS	STA. 538+19.78 R4	TO STA. 553+19.78 R4	LAWRENCE	36	28
	CHECKED -	REVISED -							CONTRACT NO. 74C45		
PLOT DATE = 11/25/2024	DATE -	REVISED -							ILLINOIS FED. AID PROJECT		



MODEL: BUS50CL - Plan 34 (Sheet)
 FILE NAME: c:\p\work\p\andrew.niemerg@illinois.gov\0911650\D774C45-shr-Plan.dgn

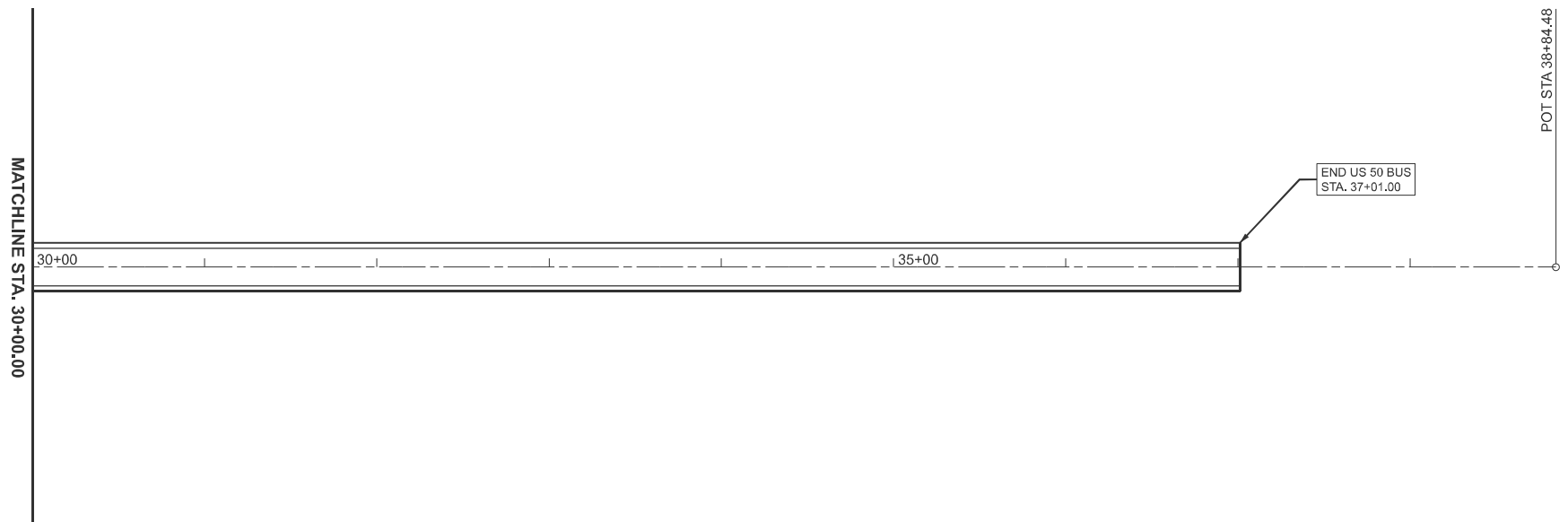
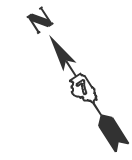
USER NAME = andrew.niemerg	DESIGNED -	REVISED -
	DRAWN -	REVISED -
	CHECKED -	REVISED -
PLOT DATE = 11/25/2024	DATE -	REVISED -

**STATE OF ILLINOIS
DEPARTMENT OF TRANSPORTATION**

PLAN SHEET - RAMPS

SCALE: 1"=50' SHEET 18 OF 20 SHEETS STA. 0+00.00 TO STA. 30+00.00

F.A.P. RTE.	SECTION	COUNTY	TOTAL SHEETS	SHEET NO.
VAR	(51-23.3-2,2-2,2Z)RS-2	LAWRENCE	36	29
CONTRACT NO. 74C45				
ILLINOIS FED. AID PROJECT				



MODEL: BUS50CL - Plan 36 [Sheet]
 FILE NAME: c:\p\work\pwl\andrew.niemerg@illinois.gov\0911650\D774C45-shr-Plan.dgn

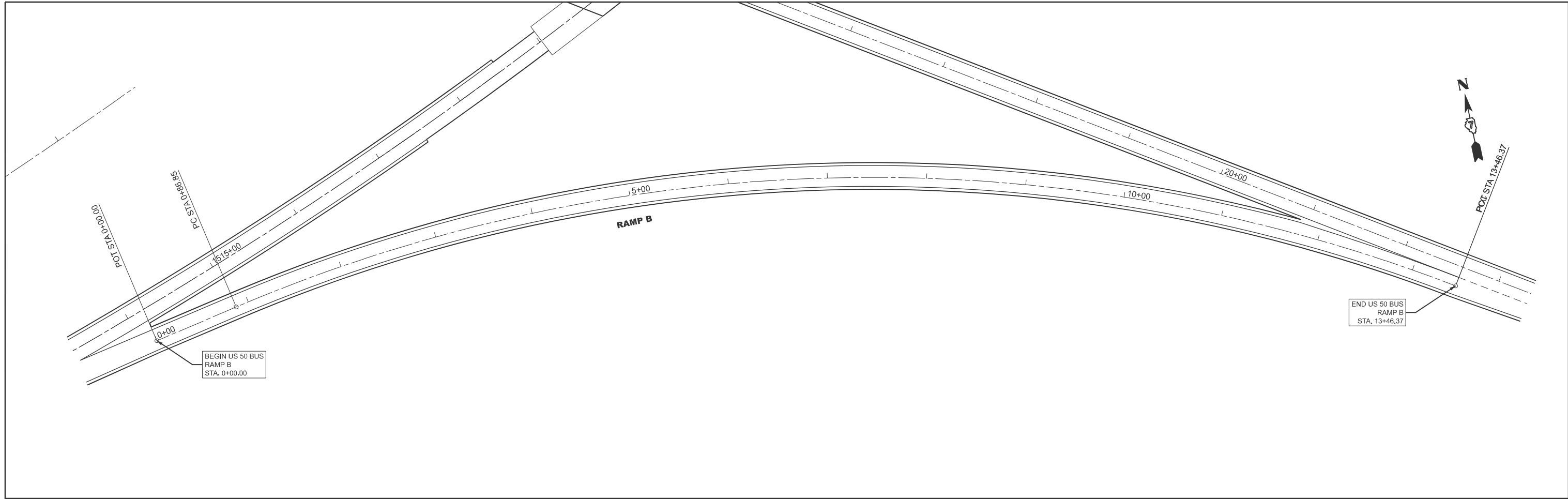
USER NAME = andrew.niemerg	DESIGNED -	REVISED -
	DRAWN -	REVISED -
	CHECKED -	REVISED -
PLOT DATE = 11/25/2024	DATE -	REVISED -

STATE OF ILLINOIS
DEPARTMENT OF TRANSPORTATION

PLAN SHEET - RAMPS

SCALE: 1"=50' SHEET 19 OF 20 SHEETS STA. 30+00.00 TO STA. 45+00.00

F.A.P RTE.	SECTION	COUNTY	TOTAL SHEETS	SHEET NO.
VAR	(51-23,3-2,2-2,2)RS-2	LAWRENCE	36	30
CONTRACT NO. 74C45				
ILLINOIS		FED. AID PROJECT		



MODEL: I:\S50EXT - Plan 37 (Sheet)
 FILE NAME: c:\p\work\pwl\andrew.niemerg@illinois.gov\0911650\774C45-shr-Plan.dgn

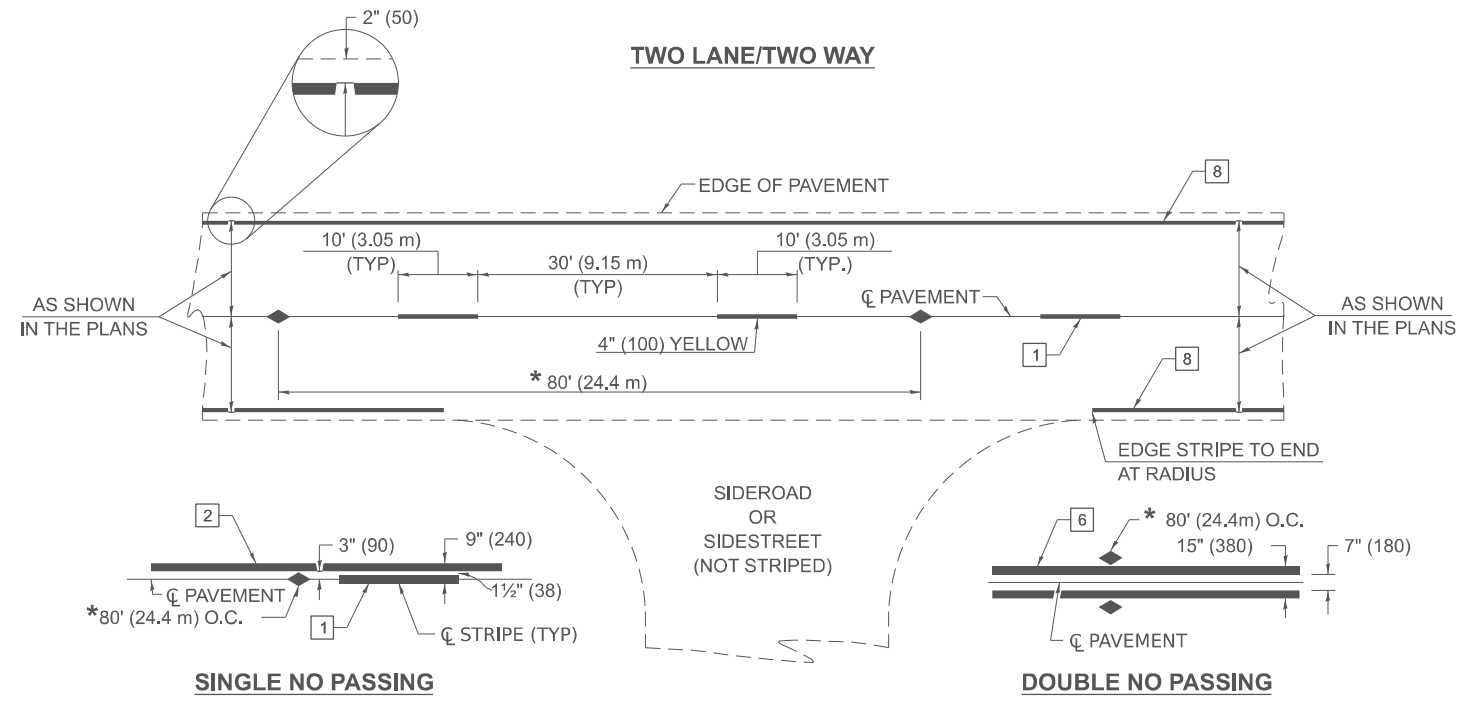
USER NAME = andrew.niemerg	DESIGNED -	REVISED -
	DRAWN -	REVISED -
	CHECKED -	REVISED -
PLOT DATE = 12/12/2024	DATE -	REVISED -

**STATE OF ILLINOIS
 DEPARTMENT OF TRANSPORTATION**

PLAN SHEET - RAMPS

SCALE: 1"=50' SHEET 20 OF 20 SHEETS STA. 0+00.00 TO STA. 15+00.00

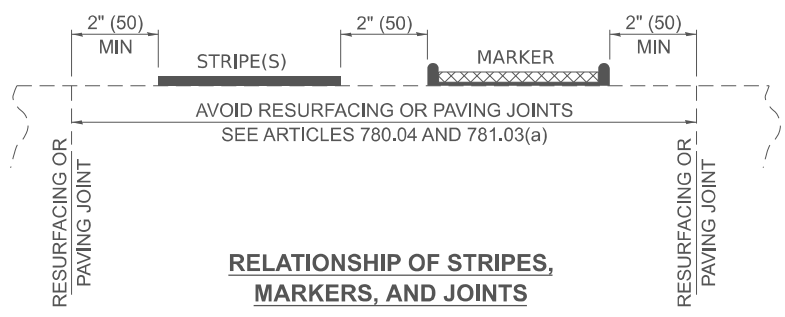
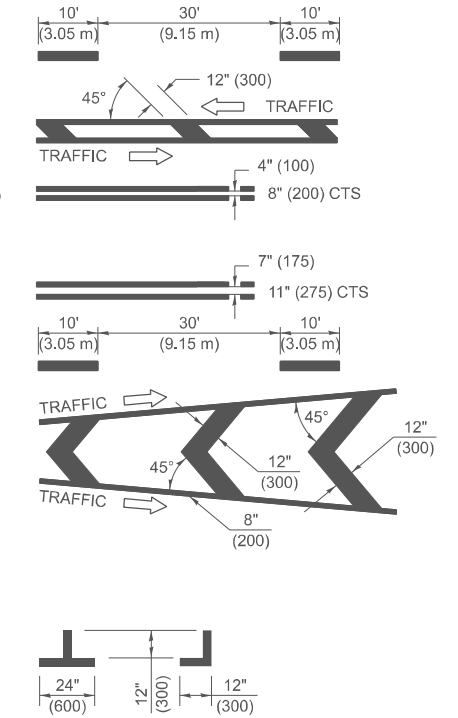
F.A.P. RTE.	SECTION	COUNTY	TOTAL SHEETS	SHEET NO.
VAR	(51-23.3-2,2-2,2)RS-2	LAWRENCE	36	31
CONTRACT NO. 74C45				
		ILLINOIS	FED. AID PROJECT	



* REDUCE TO 40' (12.2 m) O.C. ON CURVES WITH POSTED OR ADVISORY SPEEDS OF 45 MPH (70 km/h) OR LESS.

PAVEMENT MARKERS LEGEND

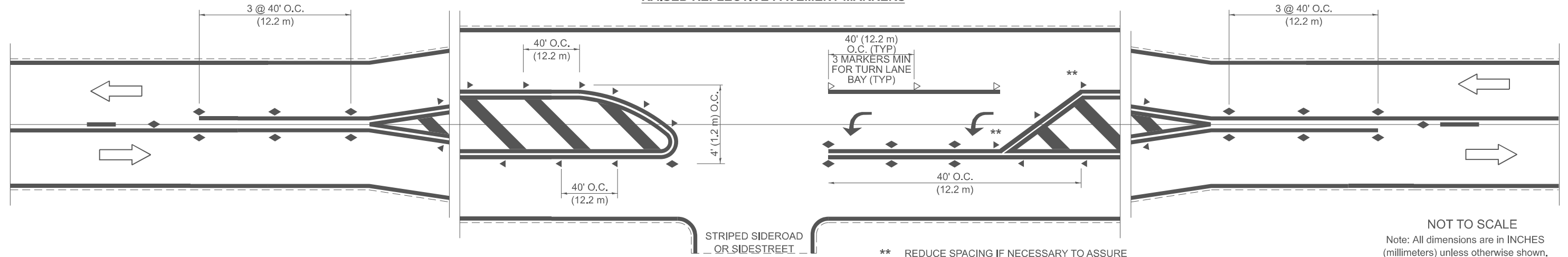
- 1 4" (100) SKIP-DASH (YELLOW)
- 2 4" (100) SOLID (YELLOW)
- 3 12" (300) DIAGONAL (YELLOW)
- 4 4" (100) DOUBLE YELLOW (NARROW)
- 5 12" (300) SOLID (WHITE)
- 6 4" (100) DOUBLE YELLOW (WIDE)
- 7 6" (150) SKIP-DASH (WHITE)
- 8 4" (100) SOLID (WHITE)
- 9 12" (300) DIAGONAL (WHITE)
- 10 6" (150) SOLID (WHITE)
- 11 24" (600) STOP BAR (WHITE)
- 12 8" (200) SOLID (WHITE)
- 13 4" (100) PARKING (WHITE)



TYPICAL PAVEMENT MARKERS LEGEND

- ◆ TWO-WAY AMBER MARKER
- ▶ ONE-WAY AMBER MARKER
- ▷ ONE-WAY CRYSTAL MARKER

RAISED REFLECTIVE PAVEMENT MARKERS



NOT TO SCALE
Note: All dimensions are in INCHES (millimeters) unless otherwise shown.

MODEL - Details [Sheet]
FILE NAME: c:\p\work\wvictorianandrew.niemerg@illinois.gov\0911650\774C45-shr-Details.dgn

USER NAME = andrew.niemerg	DESIGNED -	REVISED -
	DRAWN -	REVISED -
	CHECKED -	REVISED -
PLOT DATE = 11/25/2024	DATE -	REVISED -

**STATE OF ILLINOIS
DEPARTMENT OF TRANSPORTATION**

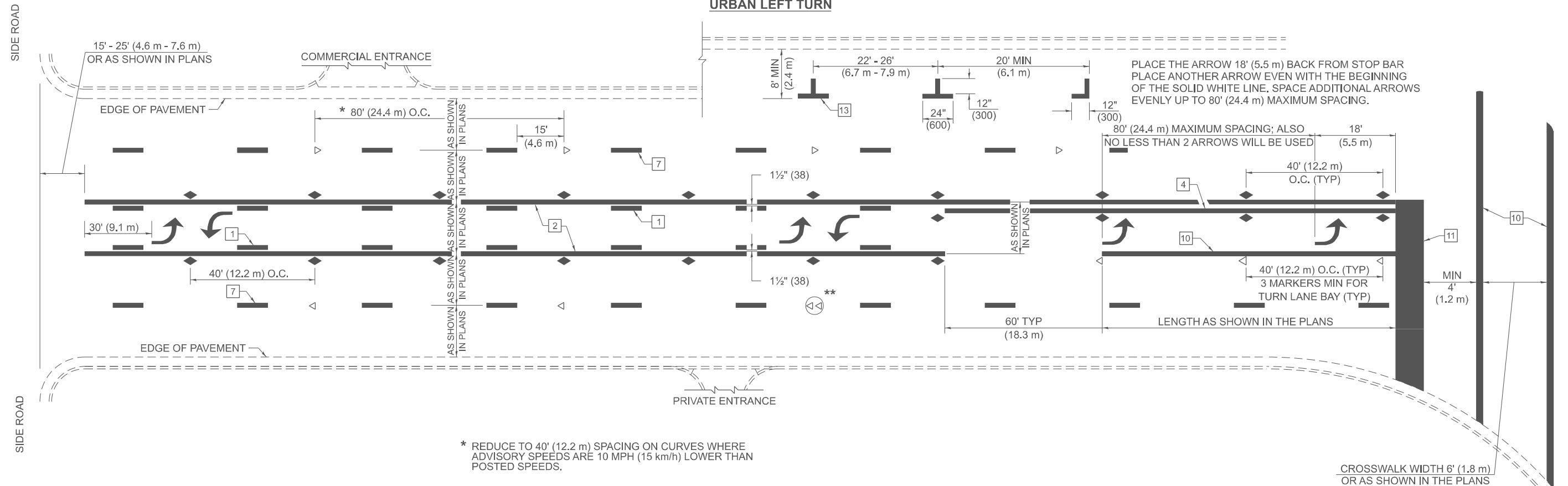
DETAILS

SCALE: SHEET 1 OF 5 SHEETS STA. TO STA.

DISTRICT 7 DETAIL NO. 78000001

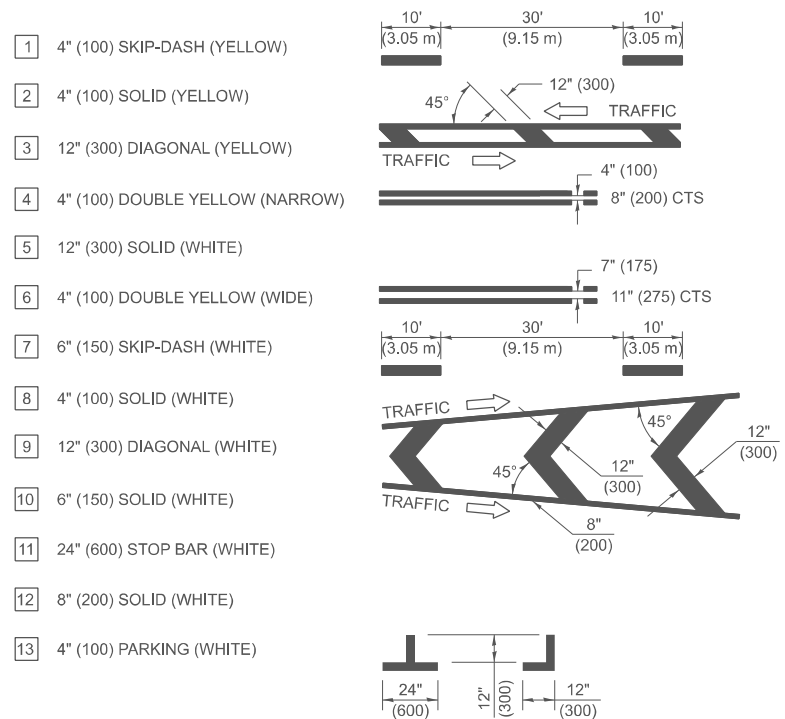
F.A. RTE.	SECTION	COUNTY	TOTAL SHEETS	SHEET NO.
VAR	(51-23.3-2,2,2)RS-2	LAWRENCE	36	32
CONTRACT NO. 74C45				

URBAN LEFT TURN



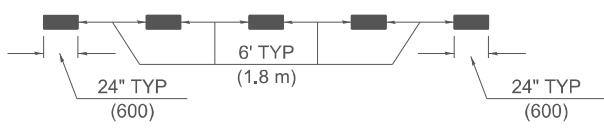
- * REDUCE TO 40' (12.2 m) SPACING ON CURVES WHERE ADVISORY SPEEDS ARE 10 MPH (15 km/h) LOWER THAN POSTED SPEEDS.
- ** DOUBLE LANE LINE MARKERS SHALL BE SPECIFIED AND SPACED AS SHOWN IN HIGHWAY STANDARD 781001 FOR MULTI-LANE DIVIDED AND UNDIVIDED HIGHWAYS.

PAVEMENT MARKING LEGEND

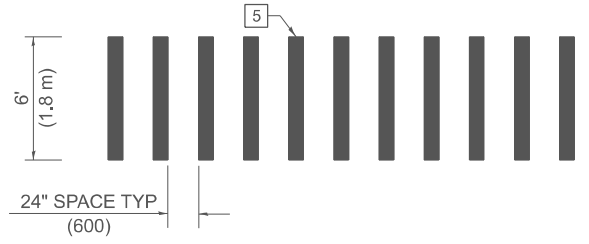


GENERAL NOTES

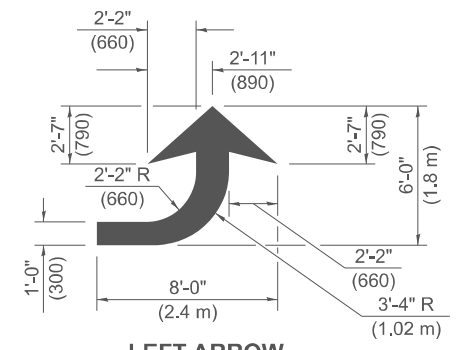
1. TURN ARROW PAIRS SHALL BE PLACED AT 250' (75 m) INTERVALS AND SHALL BE EVENLY SPACED BETWEEN BOTH ENDS OF THE BIDIRECTIONAL LEFT TURN LANE USE A MINIMUM OF TWO PAIRS PER BLOCK.
2. THE SOLID YELLOW PAVEMENT MARKING [2] SHOULD GENERALLY START OR END NEAR THE RADIUS POINT OF EACH STREET RETURN EXCEPT WHERE ONE OR BOTH ENDS WOULD INCLUDE STOP BARS.
3. THE SKIP-DASH PAVEMENT MARKING [1] OR [7] SHOULD BE CENTERED BETWEEN BOTH ENDS OF EACH CITY BLOCK AND SHALL BE PLACED SO THEY LINE UP ACROSS FROM EACH OTHER.
4. USE LARGE ARROW SIZE FOR BOTH RURAL AND URBAN LOCATIONS. (SEE SECTION 780 FOR SYMBOLS TABLE)
5. LANE LINE EXTENSIONS SHALL BE THE SAME COLOR AND WIDTH AS THE LANE LINE BEING EXTENDED.
6. ALL WHITE SKIP-DASH LINES SHALL BE 6" IN WIDTH.



LANE LINE EXTENSIONS

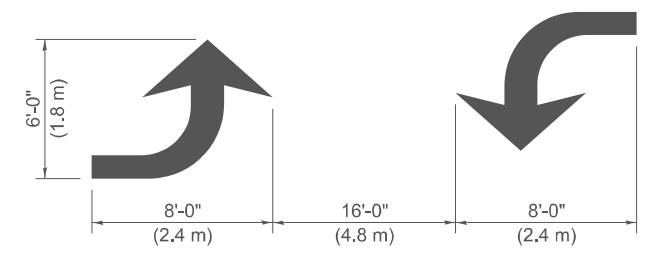


CROSSWALK DETAIL (DECATUR CITY LIMITS ONLY)



LEFT ARROW

REVERSE FOR RIGHT ARROW
AREA = 15.6 SQ.FT. (1.47 m²)
(WHITE)



TYPICAL DOUBLE TURN ARROWS (WHITE)

NOT TO SCALE
Note: All dimensions are in INCHES (millimeters) unless otherwise shown.

DISTRICT 7 DETAIL NO. 78000001

USER NAME = andrew.niemerg	DESIGNED -	REVISED -
	DRAWN -	REVISED -
	CHECKED -	REVISED -
PLOT DATE = 11/25/2024	DATE -	REVISED -

**STATE OF ILLINOIS
DEPARTMENT OF TRANSPORTATION**

DETAILS

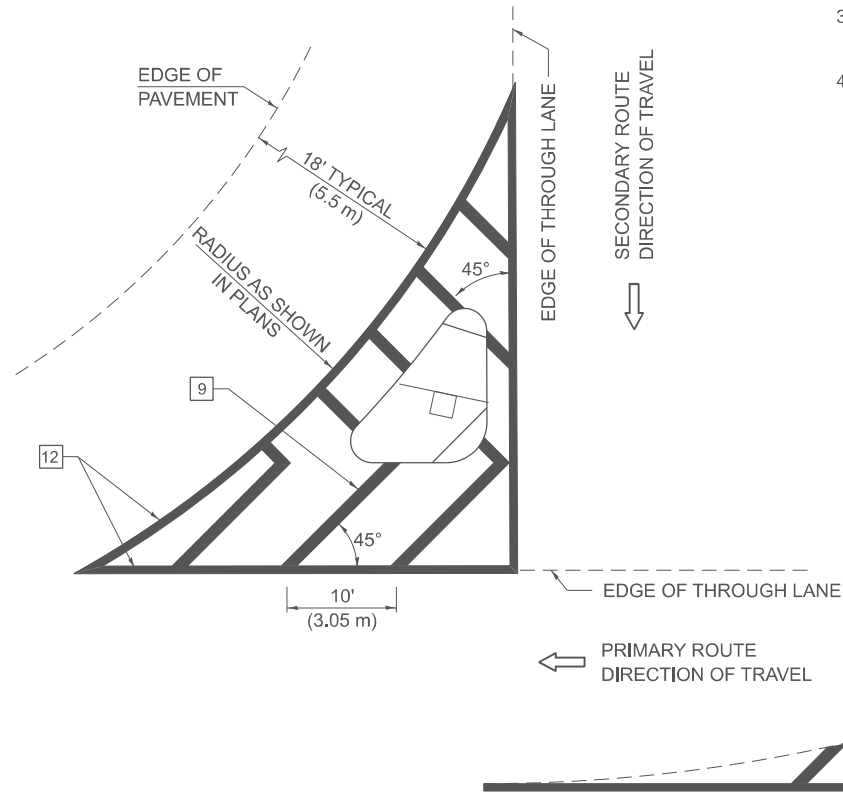
SCALE: SHEET 2 OF 5 SHEETS STA. TO STA.

F.A. RTE.	SECTION	COUNTY	TOTAL SHEETS	SHEET NO.
VAR	(51-23.3-2,2,2)RS-2	LAWRENCE	36	33
CONTRACT NO. 74C45				
ILLINOIS FED. AID PROJECT				

MODEL - Details-1 (Sheet)
FILE NAME: c:\p\work\wv\illanorrev.niemerg@illinois.gov\0911650\774c45-sh+Details.dgn

ISLANDS

OPTION 1

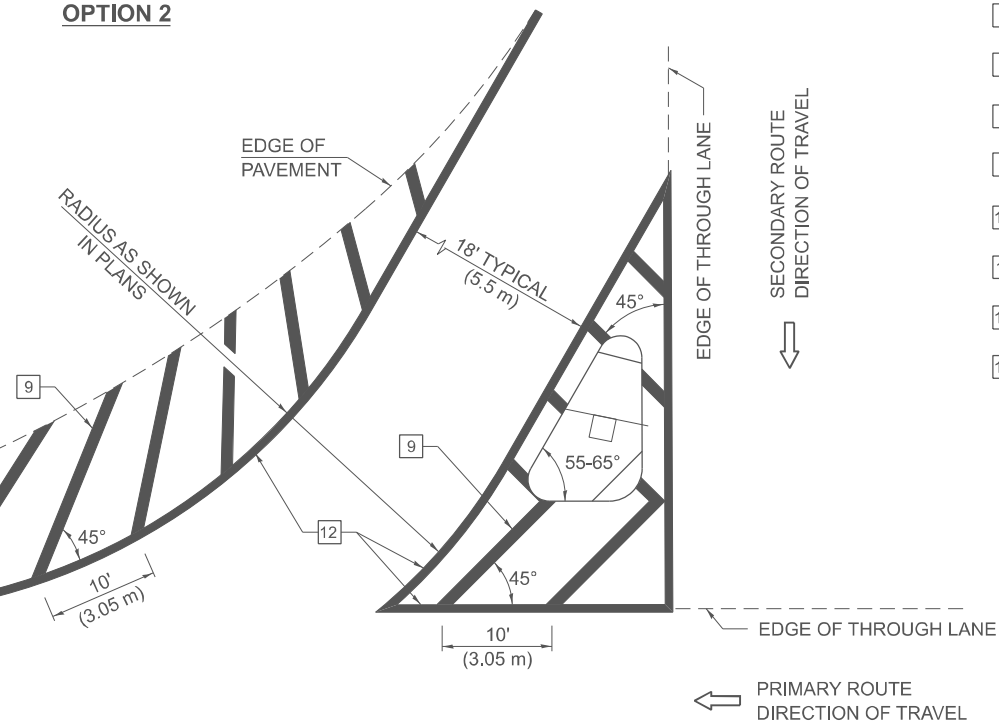


GENERAL NOTES

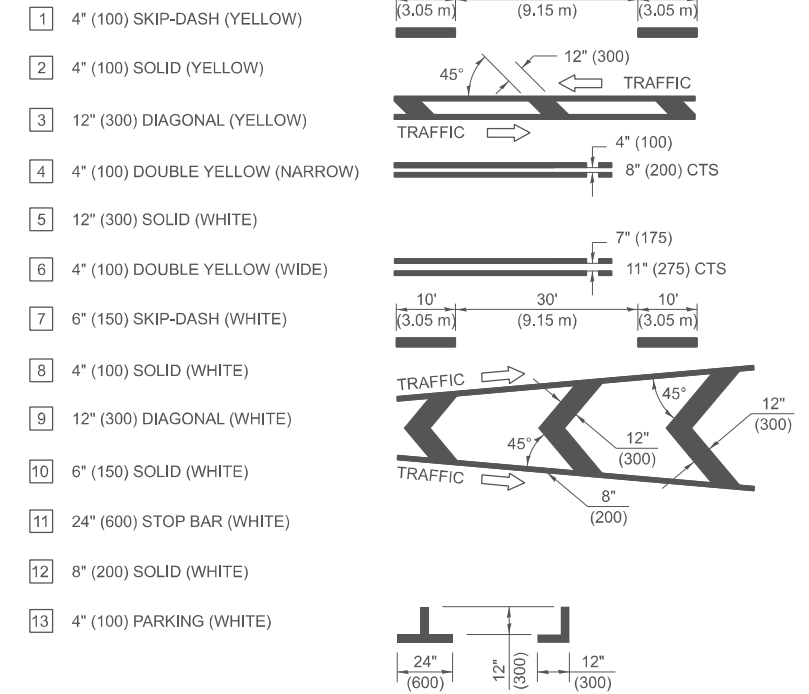
1. RAISED AND CORRUGATED MEDIANS SHALL BE OUTLINED WITH [2].
2. SOME OF THE INFORMATION INCLUDED WITH THIS DETAIL MAY NOT BE APPLICABLE TO THIS IMPROVEMENT.
3. PAVEMENT MARKINGS ARE TO BE EXTENDED THROUGH OMISSIONS WHEN APPLICABLE.
4. FINAL PAVEMENT MARKINGS SHALL BE IN PLACE PRIOR TO PLACING ANY RAISED REFLECTIVE PAVEMENT MARKERS.
5. THE FOLLOWING CRITERIA SHALL BE USED FOR SELECTING THE DIAGONAL PAVEMENT MARKING SPACING:

<30 MPH (<50 km/h)	15' (4.5 m)
30-45 MPH (50-75 km/h)	20' (6.0 m)
>45 MPH (>75 km/h)	30' (9.0 m)
6. THE USE OF ISLAND STRIPING OPTION 1 OR OPTION 2 SHALL BE AS SHOWN ON THE PLANS.

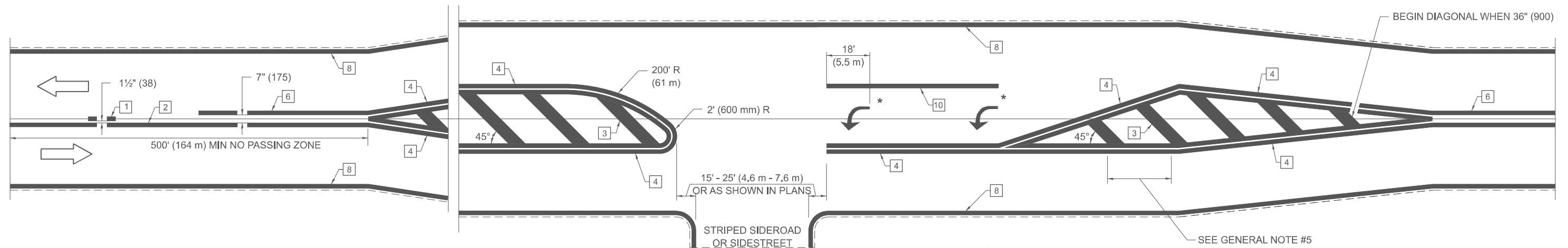
OPTION 2



PAVEMENT MARKING LEGEND



RURAL LEFT TURN STRIPING



* PLACE AN ARROW 18' (5.5 m) BACK FROM END OF THE SOLID WHITE LINE. PLACE ANOTHER ARROW EVEN WITH THE BEGINNING OF THE SOLID WHITE LINE. SPACE ADDITIONAL ARROWS EVENLY UP TO 80' (24.4 m) MAXIMUM SPACING. USE MINIMUM OF 2 ARROWS.

NOT TO SCALE
Note: All dimensions are in INCHES (millimeters) unless otherwise shown.

DISTRICT 7 DETAIL NO. 78000001

USER NAME = andrew.niemerg	DESIGNED -	REVISED -
	DRAWN -	REVISED -
	CHECKED -	REVISED -
PLOT DATE = 11/25/2024	DATE -	REVISED -

**STATE OF ILLINOIS
DEPARTMENT OF TRANSPORTATION**

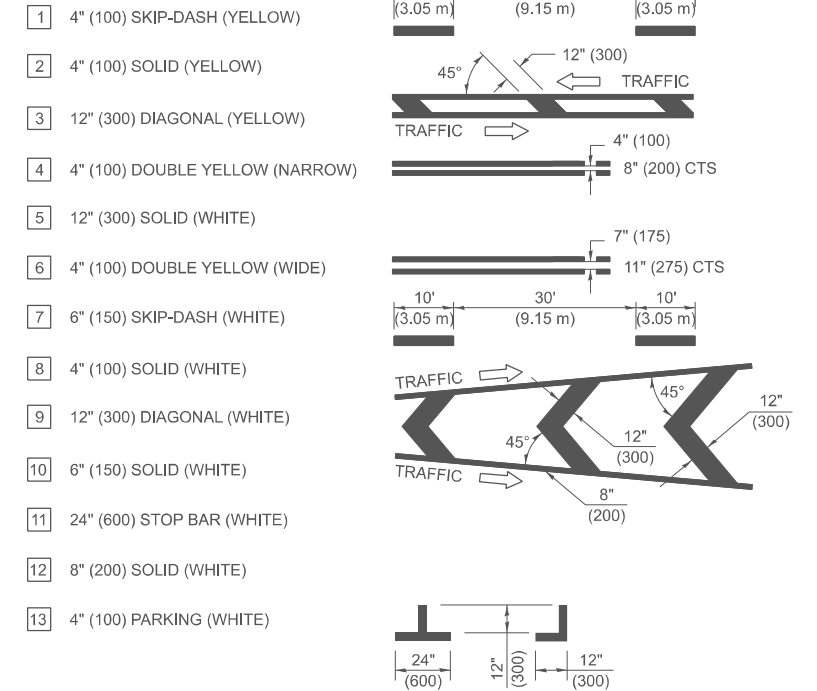
DETAILS

SCALE: SHEET 3 OF 5 SHEETS STA. TO STA.

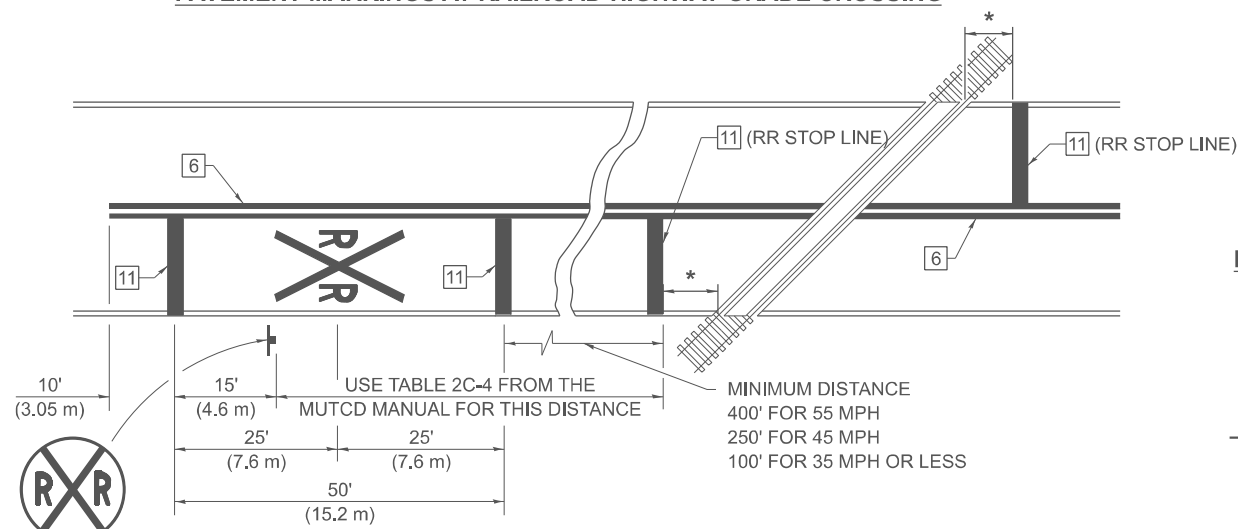
F.A. RTE.	SECTION	COUNTY	TOTAL SHEETS	SHEET NO.
VAR	(51-23.3-2,2-2,2Z)RS-2	LAWRENCE	36	34
CONTRACT NO. 74C45				

SUPPLEMENTAL PAVEMENT MARKING TREATMENT FOR RAILROAD-HIGHWAY GRADE CROSSING

PAVEMENT MARKING LEGEND



PAVEMENT MARKINGS AT RAILROAD-HIGHWAY GRADE CROSSING

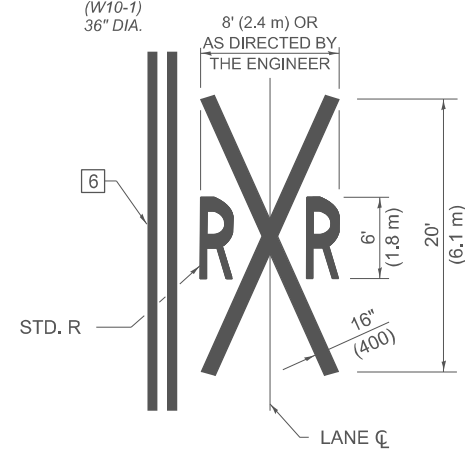


NOTES

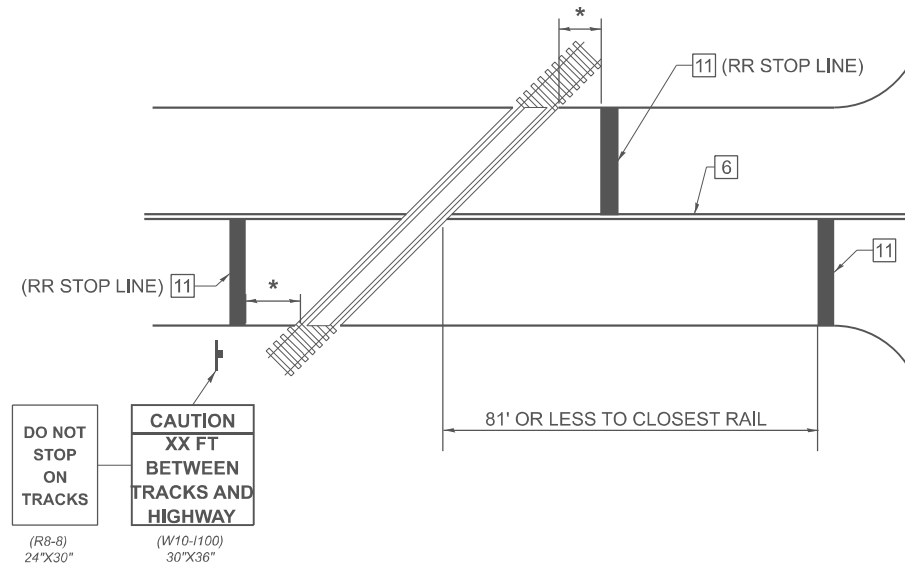
THE TRAVERSE SPREAD OF THE "X" MAY VARY ACCORDING TO LANE WIDTH.

ON MULTI-LANE ROADS, THE STOP LINES SHALL EXTEND ACROSS ALL APPROACH LANES AND SEPARATE RXR SYMBOLS SHALL BE PLACED ADJACENT TO EACH OTHER IN EACH LANE.

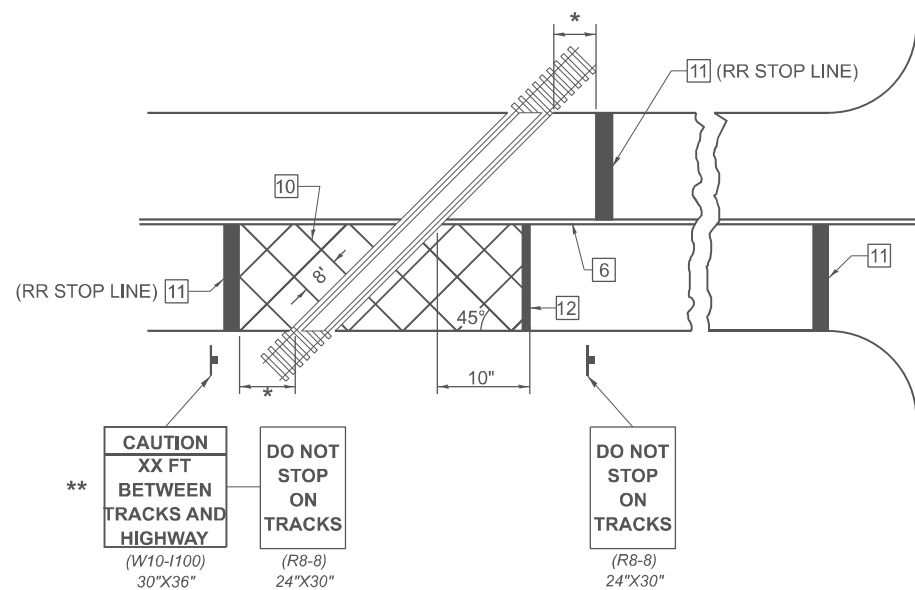
WHEN THE PAVEMENT MARKING SYMBOLS IS USED, A PORTION OF THE SYMBOL SHOULD BE LOCATED DIRECTLY ADJACENT TO THE ADVANCE WARNING SIGN (W10-1) AS PLACED BY TABLE II-1, CONDITION B OF THE MUTCD.



RAILROAD CROSSING WITH NON-SIGNALIZED INTERSECTION

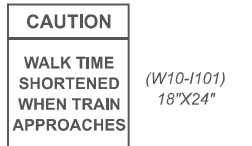


RAILROAD CROSSING WITH INTERCONNECT AND PRE-SIGNALS



GENERAL NOTES

- SUPPLEMENTAL PAVEMENT MARKINGS TO BE INSTALLED ONLY ON APPROACHES TO INTERSECTIONS CONTROLLED BY TRAFFIC SIGNALS WHICH ARE INTERCONNECTED WITH THE RAILROAD WARNING SIGNALS.
- EXTEND PAVEMENT MARKINGS TO THE INTERSECTION ONLY WHERE PRE-SIGNALS ARE USED.
- WHEN PEDESTRIAN SIGNALS ARE PRESENT WITH INTERCONNECTED SIGNALS, WARNING SIGN W10-1101 (18"X24") SHALL BE PLACED NEAR EACH PEDESTRIAN SIGNAL HEAD. COUNTDOWN PEDESTRIAN SIGNAL HEADS SHALL NOT BE UTILIZED ALONG WITH INTERCONNECTED SIGNALS.
- PLEASE REFER TO THE IDOT BUREAU OF OPERATION MEMO OPS T-06 DATED DECEMBER 1, 2020 FOR ADDITIONAL INFORMATION.



- * 15' FROM NEAR RAIL OR 8' FROM AND PARALLEL TO GATE IF PRESENT
- ** WARNING SIGN W10-1100 SHALL BE USED AS AN INTERIM MEASURE AT INTERCONNECTED SIGNAL LOCATIONS WHERE PRE-SIGNALS ARE TO BE INSTALLED IN THE FUTURE. THIS SIGN SHALL BE REMOVED WHEN THE PRE-SIGNALS ARE INSTALLED AND THE PAVEMENT MARKINGS ARE EXTENDED TO THE INTERSECTION.

NOT TO SCALE
Note: All dimensions are in INCHES (millimeters) unless otherwise shown.

DISTRICT 7 DETAIL NO. 78000001

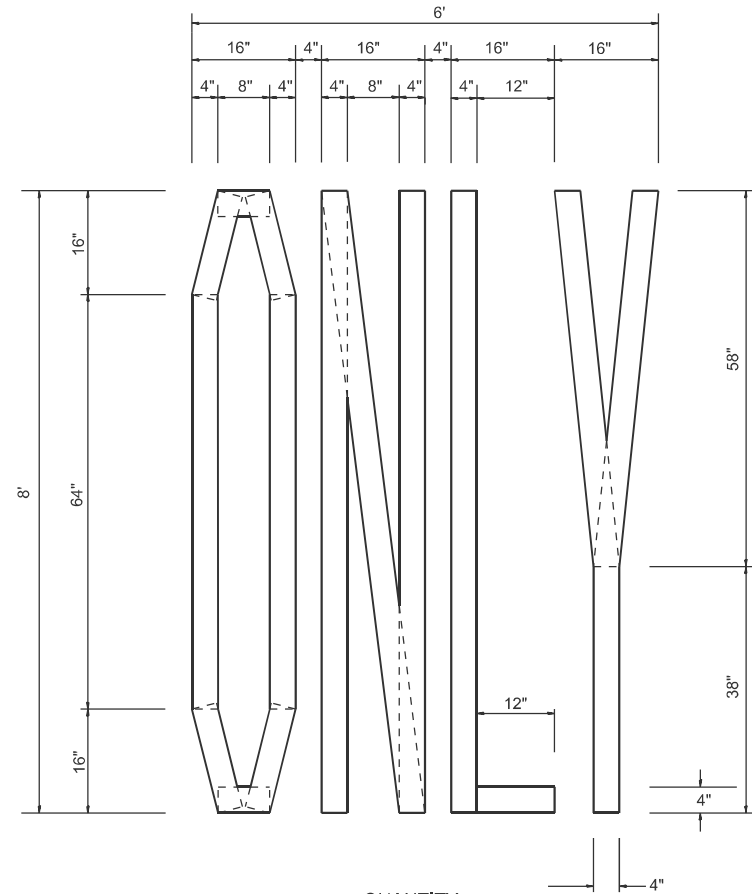
USER NAME = andrew.niemerg	DESIGNED -	REVISED -
	DRAWN -	REVISED -
	CHECKED -	REVISED -
PLOT DATE = 11/25/2024	DATE -	REVISED -

STATE OF ILLINOIS
DEPARTMENT OF TRANSPORTATION

DETAILS

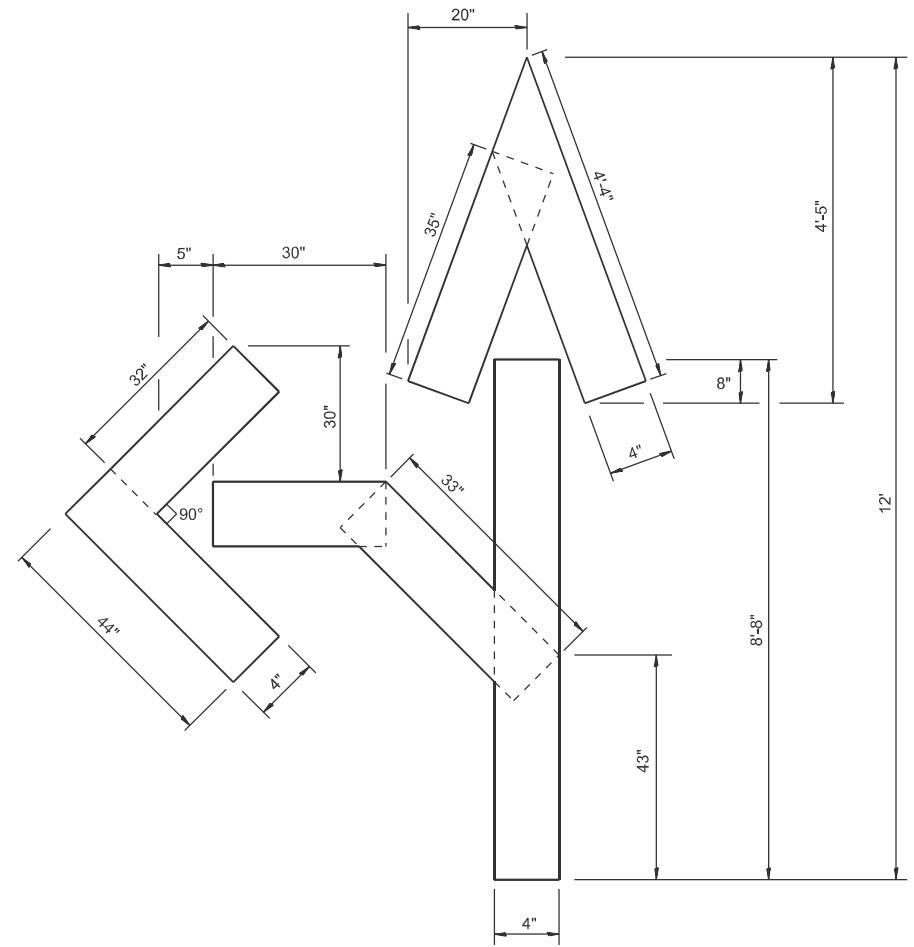
SCALE: SHEET 4 OF 5 SHEETS STA. TO STA.

F.A. RTE.	SECTION	COUNTY	TOTAL SHEETS	SHEET NO.
VAR	(51-23.3-2,2,2)RS-2	LAWRENCE	36	35
CONTRACT NO. 74C45			ILLINOIS FED. AID PROJECT	

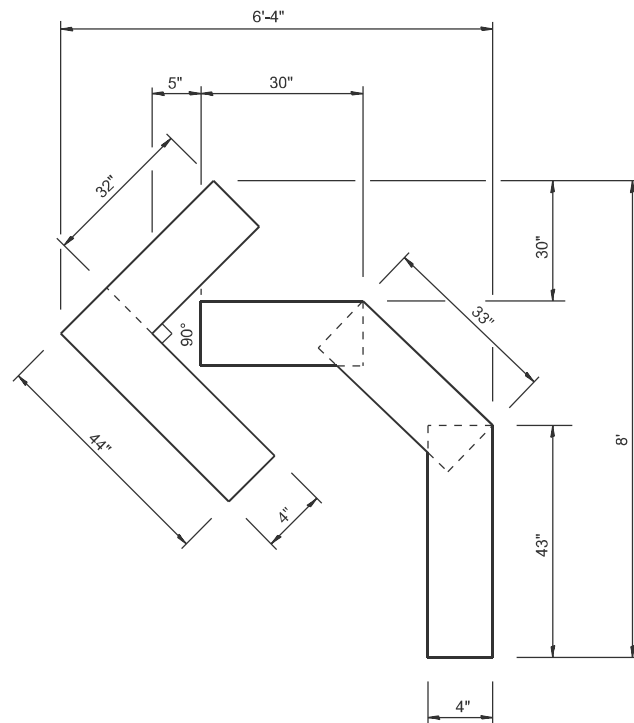


QUANTITY
4" LINE = 63.2 FT
21.0 SQ FT

SHORT TERM STOP BAR



QUANTITY
4" LINE = 27.5 FT
9.2 SQ FT



QUANTITY
4" LINE = 15.2 FT
5.0 SQ FT

NOT TO SCALE

DISTRICT 7 DETAIL NO. 7030001

MODEL: Detail-4 (Sheet)
FILE NAME: c:\p\work\awit\andrew.niemerg@illinois.gov\0911650\D774C45-shrt-Details.dgn

USER NAME = andrew.niemerg	DESIGNED -	REVISED -
	DRAWN -	REVISED -
	CHECKED -	REVISED -
PLOT DATE = 11/25/2024	DATE -	REVISED -

STATE OF ILLINOIS
DEPARTMENT OF TRANSPORTATION

DETAILS

SCALE: SHEET 5 OF 5 SHEETS STA. TO STA.

F.A. RTE.	SECTION	COUNTY	TOTAL SHEETS	SHEET NO.
VAR	(51-23.3-2,2-2,2Z)RS-2	LAWRENCE	36	36
			CONTRACT NO. 74C45	
		ILLINOIS	FED. AID PROJECT	

FAP 327, FAS 1809