

STATE OF ILLINOIS
DEPARTMENT OF TRANSPORTATION

F.A.P. RTE.	SECTION	COUNTY	TOTAL SHEETS	SHEET NO.
682	21RS-4	RANDOLPH	18	1
ILLINOIS CONTRACT NO. 76T84				

D-98-058-24

FOR INDEX OF SHEETS, SEE SHEET NO. 2

FUNCTIONAL CLASS
OTHER PRINCIPAL ARTERIAL

ADT

LOCATION 1

IL 4 TO COUNTY RD 18
2023 ADT = 4350 (ACTUAL)
2024 ADT = 4400 (ESTIMATED)
2044 ADT = 4900 (ESTIMATED)

LOCATION 2

COUNTY RD 18 TO KELI RD
2023 ADT = 4450 (ACTUAL)
2024 ADT = 4500 (ESTIMATED)
2044 ADT = 5000 (ESTIMATED)

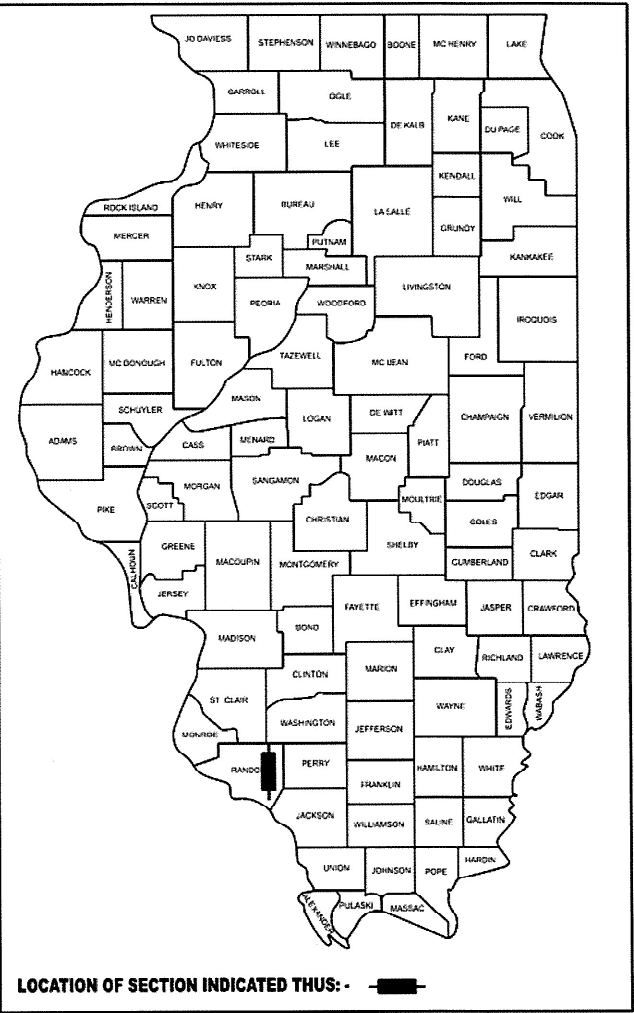
LOCATION 3

KELI ROAD TO STEVENSON DR
2023 ADT = 5100 (ACTUAL)
2024 ADT = 5150 (ESTIMATED)
2044 ADT = 5800 (ESTIMATED)

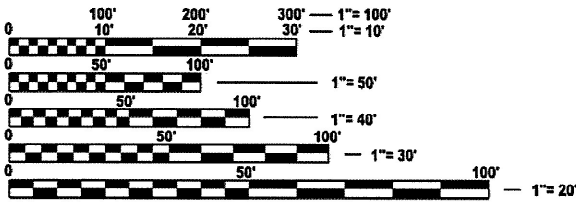
**PROPOSED
HIGHWAY PLANS**

**FAP ROUTE 682 (IL 4)
SECTION 21RS-4
PROJECT NHPP-7YP8(610)
MICRO-SURFACING 1 PASS
RANDOLPH COUNTY**

C-98-126-24



PROJECT ENDS
STA: 871 + 05
LAT: 38.2096
LONG: -89.7033
BRIDGE OMISSION
SN 079-0050
STA. 791 + 95.60
TO STA. 793 + 51.99

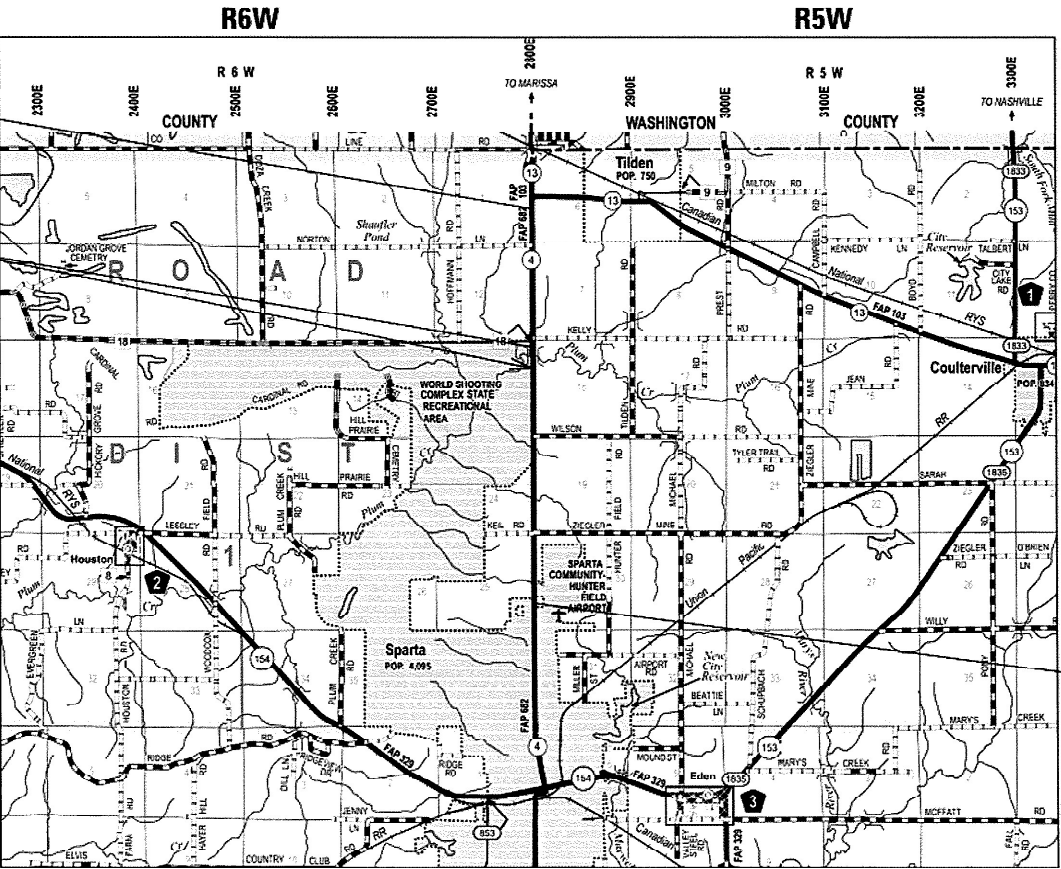


FULL SIZE PLANS HAVE BEEN PREPARED USING STANDARD
ENGINEERING SCALES. REDUCED SIZED PLANS WILL NOT
CONFORM TO STANDARD SCALES. IN MAKING MEASUREMENTS
ON REDUCED PLANS, THE ABOVE SCALES MAY BE USED.

J.U.L.I.E.
JOINT UTILITY LOCATION INFORMATION FOR EXCAVATION
1-800-892-0123
OR 811

**PROJECT ENGINEER: BILLIE OWEN
PROJECT MANAGER: MIKE BERG**

CONTRACT NO. 76T84



PROJECT BEGINS
STA: 658 + 60
LAT: 38.1512
LONG: -89.7035

GROSS LENGTH = 21245 FT. = 4.02 MILE
NET LENGTH = 21088.6 FT. = 3.99 MILE
OMISSION = 156.4 FT. = 0.03 MILE

STATE OF ILLINOIS
DEPARTMENT OF TRANSPORTATION

SUBMITTED Dec 11 20 24
Kel JH REGIONAL ENGINEER

January 31 20 25
See Etc ENGINEER OF DESIGN AND ENVIRONMENT

January 31 20 25
Quarry DIRECTOR OF HIGHWAYS PROJECT IMPLEMENTATION

**PRINTED BY THE AUTHORITY
OF THE STATE OF ILLINOIS**

INDEX OF SHEETS

- 1. COVER SHEET
- 2. INDEX OF SHEETS, HIGHWAY STANDARDS, GENERAL NOTES, AND COMMITMENTS
- 3. SUMMARY OF QUANTITIES
- 4 - 7. TYPICAL SECTIONS
- 8. RESURFACING SCHEDULE
- 9. SCHEDULE OF QUANTITIES
- 10. LOCATION MAP
- 11 - 14. PAVEMENT MARKING DETAILS
- 15 - 18. SURVEY MONUMENTS

HIGHWAY STANDARDS

000001-08	STANDARD SYMBOLS ABBREVIATIONS & PATTERNS
001006	DECIMAL OF INCH & FOOT
701001-02	OFF-RD OPERATIONS, 2L, 2W, MORE THAN 15' (4.5m) AWAY
701006-05	OFF-RD OPERATIONS, 2L, 2W, 15' (4.5m) TO 24' (600mm) FROM PAVEMENT EDGE
701011-04	OFF-RD MOVING OPERATIONS, 2L, 2W, DAY ONLY
701201-05	LANE CLOSURE, 2L, 2W, DAY ONLY, FOR SPEEDS > 45 MPH
701301-04	LANE CLOSURE, 2L, 2W, SHORT TIME OPERATIONS
701306-04	LANE CLOSURE, 2L, 2W, SLOW MOVING OPERATIONS DAY ONLY, FOR SPEEDS ≥ 45 MPH
701311-03	LANE CLOSURE 2L, 2W, MOVING OPERATIONS-DAY ONLY
701901-10	TRAFFIC CONTROL DEVICES
780001-05	TYPICAL PAVEMENT MARKINGS
781001-04	TYPICAL APPLICATIONS RAISED REFLECTIVE PAVEMENT MARKERS

COMMITMENTS

NO COMMITMENTS

GENERAL NOTES

- 1. UTILITIES KNOWN TO HAVE FACILITIES WITHIN THE PROJECT AREA

AMEREN ILLINOIS
CLEARWAVE FIBER LLC
VILLAGE OF COULTERVILLE
EGYPTIAN ELECTRIC COOPERATIVE ASSOCIATION
EGYPTIAN TELEPHONE COOP. ASSN.
FRONTIER COMMUNICATIONS
KASKASKIA WATER DISTRICT
NEWWAVE COMMUNICATIONS
CITY OF SPARTA
VILLAGE OF TILDEN
WASHINGTON COUNTY WATER CO.
- 2. NO SURVEY WAS PERFORMED FOR THIS PROJECT AND THE PLANS WERE CREATED USING MICROFILM AND FIELD MEASUREMENTS.
- 3. THE PROPOSED PAVEMENT MARKINGS AND TEMPORARY PAVEMENT MARKINGS SHALL MATCH THE LOCATIONS OF THE EXISTING PAVEMENT MARKINGS, AS DIRECTED BY THE ENGINEER.
- 4. MICRO-SURFACING SHALL NOT COVER EXISTING RUMBLE STRIP IN THE SHOULDER.
- 5. NEW RAISED REFLECTIVE PAVEMENT MARKERS MUST BE OFFSET FROM THE EXISTING RAISED REFLECTIVE PAVEMENT MARKING LOCATIONS.
- 6. ONE CHANGEABLE MESSAGE SIGN SHALL BE PLACED IN EACH DIRECTION APPROXIMATELY TWO WEEKS PRIOR TO CONSTRUCTION. THE LOCATIONS OF THE SIGNS SHALL BE AS DIRECTED BY THE ENGINEER.
- 7. THE RESIDENT ENGINEER SHALL VERIFY THE EXISTENCE OF HIGHWAY LIGHTING, INTELLIGENT TRANSPORTATION SYSTEMS (I.T.S.) UTILITIES, AND/OR ELECTRICAL CABLES ASSOCIATED WITH TRAFFIC SIGNALS WITHIN THE PROJECT LIMITS. IF ANY OF THESE EXIST WITHIN THE PROJECT LIMITS, AND IF THESE ITEMS REQUIRE LOCATING, THE CONTRACTOR SHALL BE DIRECTED TO DO SO ACCORDING TO SECTION 803 OF THE STANDARD SPECIFICATIONS. THIS WORK SHALL BE PAID FOR ACCORDING TO ARTICLE 109.04 OF THE STANDARD SPECIFICATIONS.

MODEL: General Notes (Sheet)
FILE NAME: c:\pw\work\pwsd\john.p.green@illinois.gov\0969735\0876T84-ahf-gennote.dgn

	USER NAME = John.P.Green	DESIGNED -	REVISED -	STATE OF ILLINOIS DEPARTMENT OF TRANSPORTATION	INDEX OF SHEETS, HIGHWAY STANDARDS, GENERAL NOTES, & COMMITMENTS			F.A.P RTE.	SECTION	COUNTY	TOTAL SHEETS	SHEET NO.
		DRAWN -	REVISED -					682	21RS-4	RANDOLPH	18	2
		CHECKED -	REVISED -					CONTRACT NO. 76T84				
	PLOT DATE = 12/4/2024	DATE -	REVISED -		SCALE:	SHEET	OF	SHEETS	STA.	TO STA.	ILLINOIS FED. AID PROJECT	

MODEL: Schedule of Quantities (Sheet)
FILE NAME: F:\proj_work\kwid\john.p.green@illinois.gov\0969735\0876T84-sh-SQQ.dgn

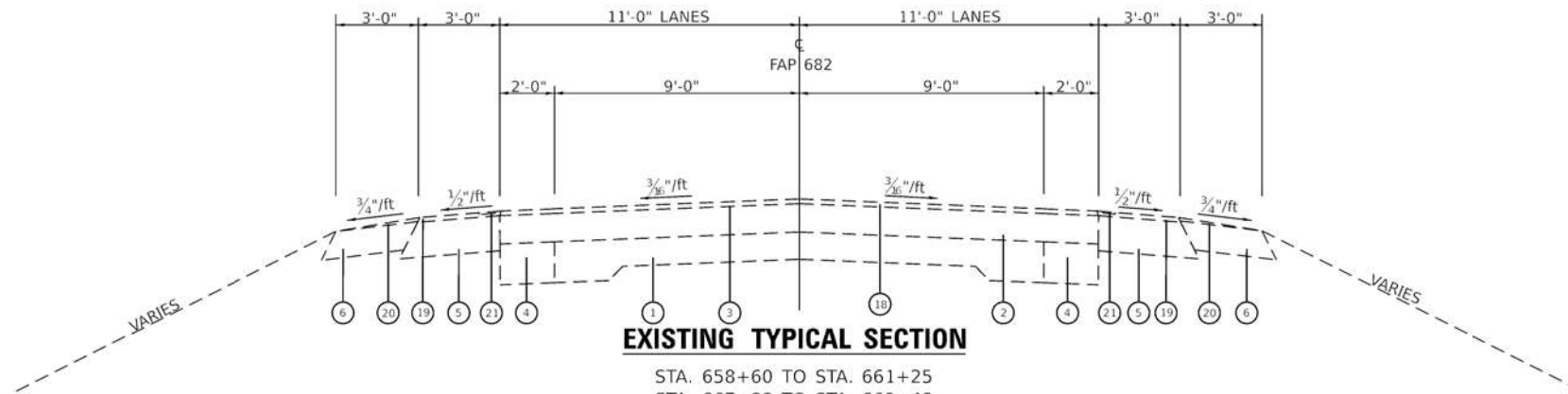
				80% FED 20% STATE
				CONSTR. CODE
CODE NO.	ITEM	UNIT	TOTAL QUANTITY	ROADWAY
				0005
				RURAL
40400118	MICRO-SURFACING, SINGLE PASS	SQ YD	53249	53249
40600290	BITUMINOUS MATERIALS (TACK COAT)	POUND	11981	11981
67000400	ENGINEER'S FIELD OFFICE, TYPE A	CAL MO	4	4
67100100	MOBILIZATION	L SUM	1	1
70100450	TRAFFIC CONTROL AND PROTECTION, STANDARD 701201	L SUM	1	1
70100460	TRAFFIC CONTROL AND PROTECTION, STANDARD 701306	L SUM	1	1
70107025	CHANGEABLE MESSAGE SIGN	CAL DA	14	14
70300100	SHORT TERM PAVEMENT MARKING	FOOT	2124	2124
70300150	SHORT TERM PAVEMENT MARKING REMOVAL	SQ FT	708	708
70300211	TEMPORARY PAVEMENT MARKING LETTERS AND SYMBOLS - PAINT	SQ FT	31	31
70300241	TEMPORARY PAVEMENT MARKING - LINE 6"- PAINT	FOOT	60440	60440
70300261	TEMPORARY PAVEMENT MARKING - LINE 12"- PAINT	FOOT	181	181
* 78000100	THERMOPLASTIC PAVEMENT MARKING - LETTERS AND SYMBOLS	SQ FT	31	31

* SPECIALTY ITEM

				80% FED 20% STATE
				CONSTR. CODE
CODE NO.	ITEM	UNIT	TOTAL QUANTITY	ROADWAY
				0005
				RURAL
* 78000400	THERMOPLASTIC PAVEMENT MARKING - LINE 6"	FOOT	60440	60440
* 78000600	THERMOPLASTIC PAVEMENT MARKING - LINE 12"	FOOT	181	181
* 78100100	RAISED REFLECTIVE PAVEMENT MARKER	EACH	300	300
78300200	RAISED REFLECTIVE PAVEMENT MARKER REMOVAL	EACH	300	300
78300202	PAVEMENT MARKING REMOVAL - WATER BLASTING	SQ FT	20238	20238
Z0070100	SURVEY MONUMENT COVER ASSEMBLY	EACH	22	22

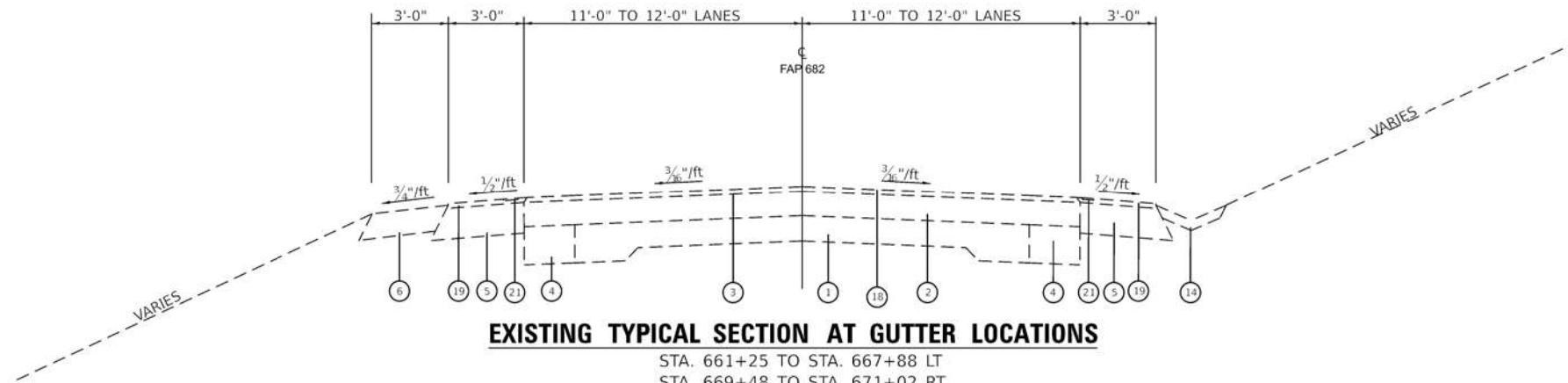
REV - MS

	USER NAME = John.P.Green	DESIGNED -	REVISED -	STATE OF ILLINOIS DEPARTMENT OF TRANSPORTATION	SUMMARY OF QUANTITIES				F.A.P. RTE.	SECTION	COUNTY	TOTAL SHEETS	SHEET NO.
		DRAWN -	REVISED -						682	21RS-4	RANDOLPH	18	3
		CHECKED -	REVISED -		CONTRACT NO. 76T84								
	PLOT DATE = 12/11/2024	DATE -	REVISED -		SCALE:	SHEET	OF	SHEETS	STA.	TO STA.	ILLINOIS FED. AID PROJECT		



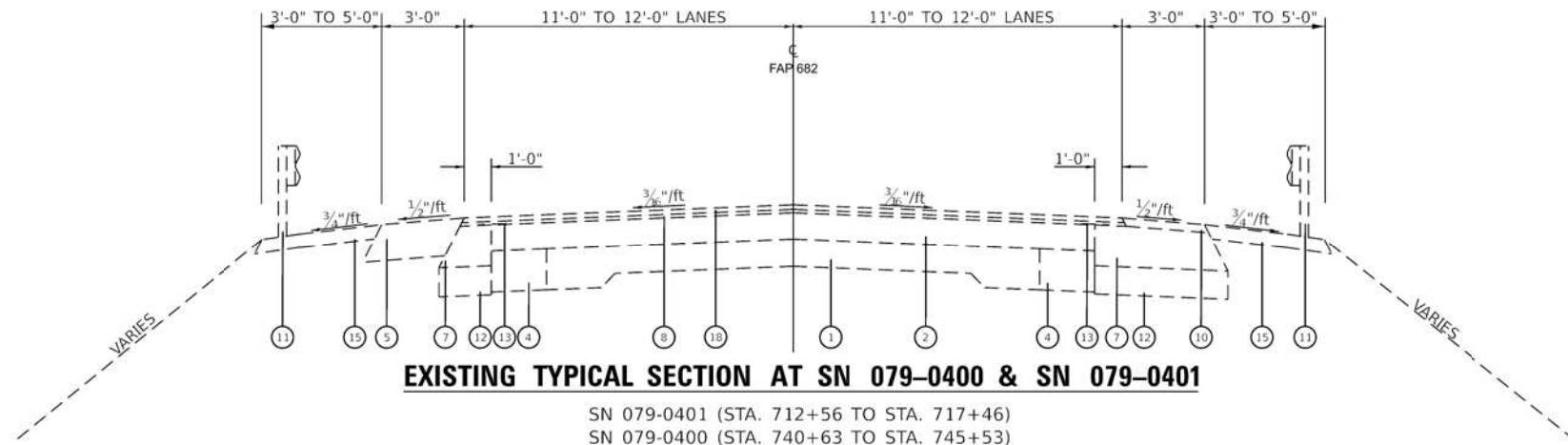
EXISTING TYPICAL SECTION

STA. 658+60 TO STA. 661+25
STA. 667+88 TO STA. 669+48
STA. 671+02 TO STA. 672+97
STA. 681+43 TO STA. 683+36
STA. 686+83 TO STA. 690+60
STA. 696+07 TO STA. 707+78
STA. 709+78 TO STA. 712+56
STA. 717+46 TO STA. 740+63
STA. 745+53 TO STA. 791+95.60
STA. 793+51.99 TO STA. 797+82
STA. 797+82 TO STA. 805+00
STA. 805+00 TO STA. 851+38
STA. 854+18 TO STA. 859+05
STA. 861+07 TO STA. 871+05



EXISTING TYPICAL SECTION AT GUTTER LOCATIONS

STA. 661+25 TO STA. 667+88 LT
STA. 669+48 TO STA. 671+02 RT
STA. 672+97 TO STA. 681+43 RT
STA. 683+36 TO STA. 686+83 RT
STA. 690+60 TO STA. 696+07 RT
STA. 707+78 TO STA. 709+78 LT
STA. 851+38 TO STA. 854+18 RT
STA. 859+05 TO STA. 861+07 LT



EXISTING TYPICAL SECTION AT SN 079-0400 & SN 079-0401

SN 079-0401 (STA. 712+56 TO STA. 717+46)
SN 079-0400 (STA. 740+63 TO STA. 745+53)

LEGEND

- ① EXISTING P.C.C. PAVEMENT 9-6-9
- ② EXISTING BITUMINOUS OVERLAY 6" (±)
- ③ EXISTING RESURFACING
- ④ EXISTING BASE COURSE WIDENING 9"
- ⑤ EXISTING HOT-MIX ASPHALT SHOULDER, 8"
- ⑥ EXISTING AGGREGATE SHOULDERS, 6"
- ⑦ EXISTING HOT-MIX ASPHALT BASE COURSE WIDENING, 12"
- ⑧ EXISTING LEVELING BINDER
- ⑨ EXISTING HOT-MIX ASPHALT SURFACE COURSE, 1 1/2"
- ⑩ EXISTING HOT-MIX ASPHALT SHOULDER, 2"
- ⑪ EXISTING GUARDRAIL
- ⑫ EXISTING SUB-BASE GRANULAR MATERIAL, TYPE A, 12"
- ⑬ EXISTING STRIP REFLECTIVE CRACK CONTROL
- ⑭ EXISTING GUTTER
- ⑮ EXISTING HOT-MIX ASPHALT STABILIZATION
- ⑯ OMITTED
- ⑰ EXISTING HOT-MIX ASPHALT BINDER COURSE (VARIES 2 1/4" TO 4")
- ⑱ EXISTING HOT-MIX ASPHALT SURFACE COURSE, MIX "C", N70, 1 1/2"
- ⑲ EXISTING HOT-MIX ASPHALT SHOULDERS, 2 1/4"
- ⑳ EXISTING AGGREGATE SHOULDER WEDGE, TYPE B
- ㉑ EXISTING SHOULDER RUMBLE STRIPS, 8"
- ㉒ PROPOSED BITUMINOUS MATERIALS (TACK COAT)
- ㉓ PROPOSED MICRO-SURFACING, SINGLE PASS
- ㉔ PROPOSED THERMOPLASTIC PAVEMENT MARKING

MODEL: -CORRECT NEW TYPICAL SHEET 1 (Sheet)
FILE NAME: c:\pw\work\john.p.green@illinois.gov\0969735\06784-shh-typical.dgn

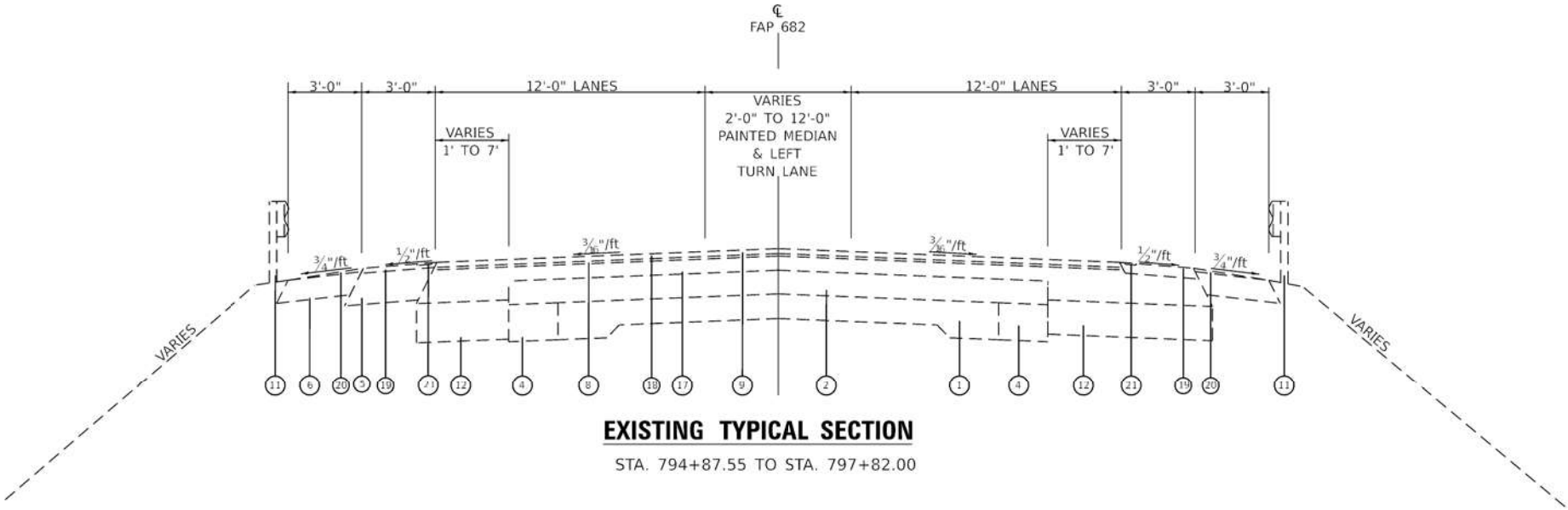
USER NAME = John.P.Green	DESIGNED -	REVISED -
	DRAWN -	REVISED -
	CHECKED -	REVISED -
PLOT DATE = 12/5/2024	DATE -	REVISED -

**STATE OF ILLINOIS
DEPARTMENT OF TRANSPORTATION**

TYPICAL SECTIONS

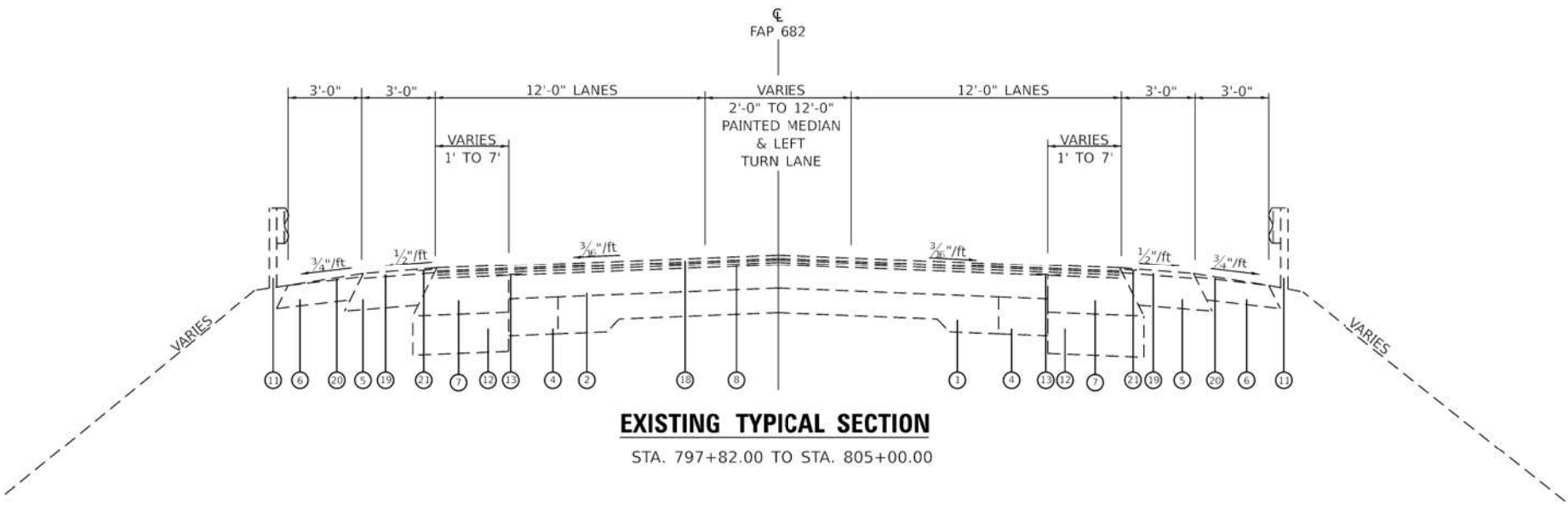
SCALE: SHEET OF SHEETS STA. TO STA.

F.A.P. RTE.	SECTION	COUNTY	TOTAL SHEETS	SHEET NO.
682	21RS-4	RANDOLPH	18	4
CONTRACT NO. 76T84				
ILLINOIS FED. AID PROJECT				



EXISTING TYPICAL SECTION

STA. 794+87.55 TO STA. 797+82.00



EXISTING TYPICAL SECTION

STA. 797+82.00 TO STA. 805+00.00

LEGEND

- ① EXISTING P.C.C. PAVEMENT 9-6-9
- ② EXISTING BITUMINOUS OVERLAY 6" (±)
- ③ EXISTING RESURFACING
- ④ EXISTING BASE COURSE WIDENING 9"
- ⑤ EXISTING HOT-MIX ASPHALT SHOULDER, 8"
- ⑥ EXISTING AGGREGATE SHOULDERS, 6"
- ⑦ EXISTING HOT-MIX ASPHALT BASE COURSE WIDENING, 12"
- ⑧ EXISTING LEVELING BINDER
- ⑨ EXISTING HOT-MIX ASPHALT SURFACE COURSE, 1 1/2"
- ⑩ EXISTING HOT-MIX ASPHALT SHOULDER, 2"
- ⑪ EXISTING GUARDRAIL
- ⑫ EXISTING SUB-BASE GRANULAR MATERIAL, TYPE A, 12"
- ⑬ EXISTING STRIP REFLECTIVE CRACK CONTROL
- ⑭ EXISTING GUTTER
- ⑮ EXISTING HOT-MIX ASPHALT STABILIZATION
- ⑯ OMITTED
- ⑰ EXISTING HOT-MIX ASPHALT BINDER COURSE (VARIES 2 1/4" TO 4")
- ⑱ EXISTING HOT-MIX ASPHALT SURFACE COURSE, MIX "C", N70, 1 1/2"
- ⑲ EXISTING HOT-MIX ASPHALT SHOULDERS, 2 1/4"
- ⑳ EXISTING AGGREGATE SHOULDER WEDGE, TYPE B
- ㉑ EXISTING SHOULDER RUMBLE STRIPS, 8"
- ㉒ PROPOSED BITUMINOUS MATERIALS (TACK COAT)
- ㉓ PROPOSED MICRO-SURFACING, SINGLE PASS
- ㉔ PROPOSED THERMOPLASTIC PAVEMENT MARKING

MODEL: -CORRECT NEW TYPICAL SHEET 2 (Sheet)
FILE NAME: c:\pw\work\pawd\john.p.green@illinois.gov\0969735\06784-shh-typical.dgn

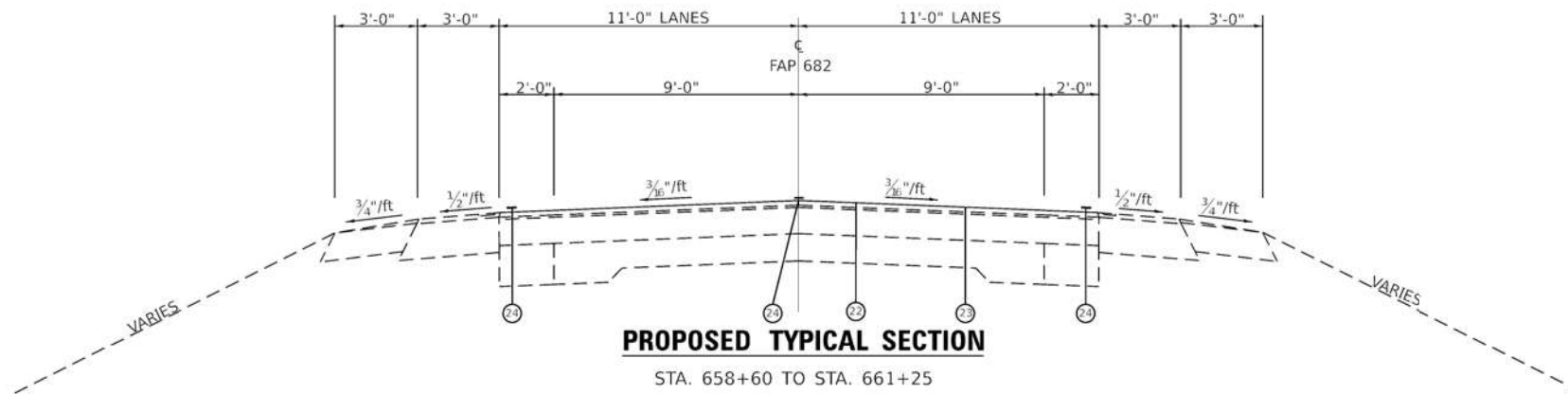
USER NAME = John.P.Green	DESIGNED -	REVISED -
	DRAWN -	REVISED -
	CHECKED -	REVISED -
PLOT DATE = 12/5/2024	DATE -	REVISED -

STATE OF ILLINOIS
DEPARTMENT OF TRANSPORTATION

TYPICAL SECTIONS

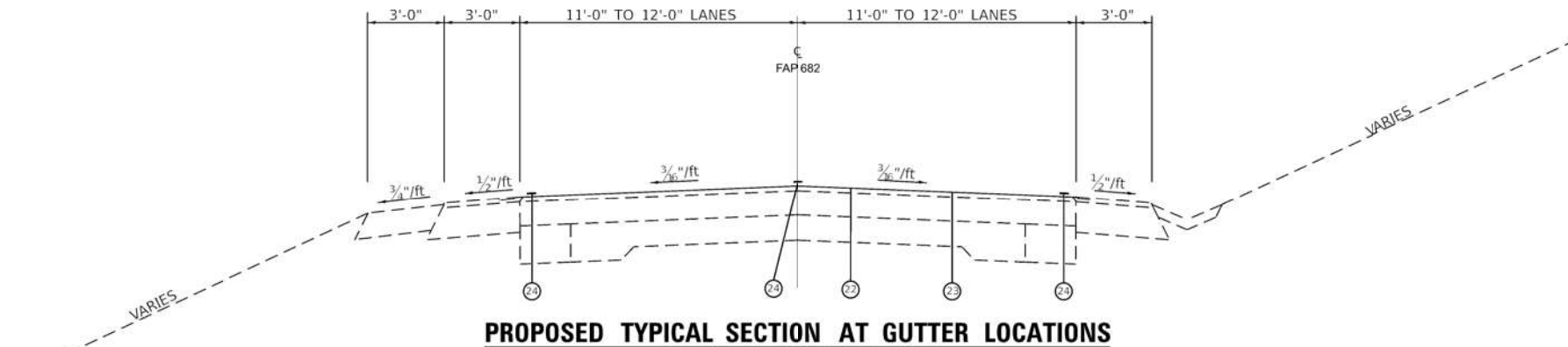
SCALE: SHEET OF SHEETS STA. TO STA.

F.A.P. RTE.	SECTION	COUNTY	TOTAL SHEETS	SHEET NO.
682	21RS-4	RANDOLPH	18	5
CONTRACT NO. 76T84				
ILLINOIS FED. AID PROJECT				



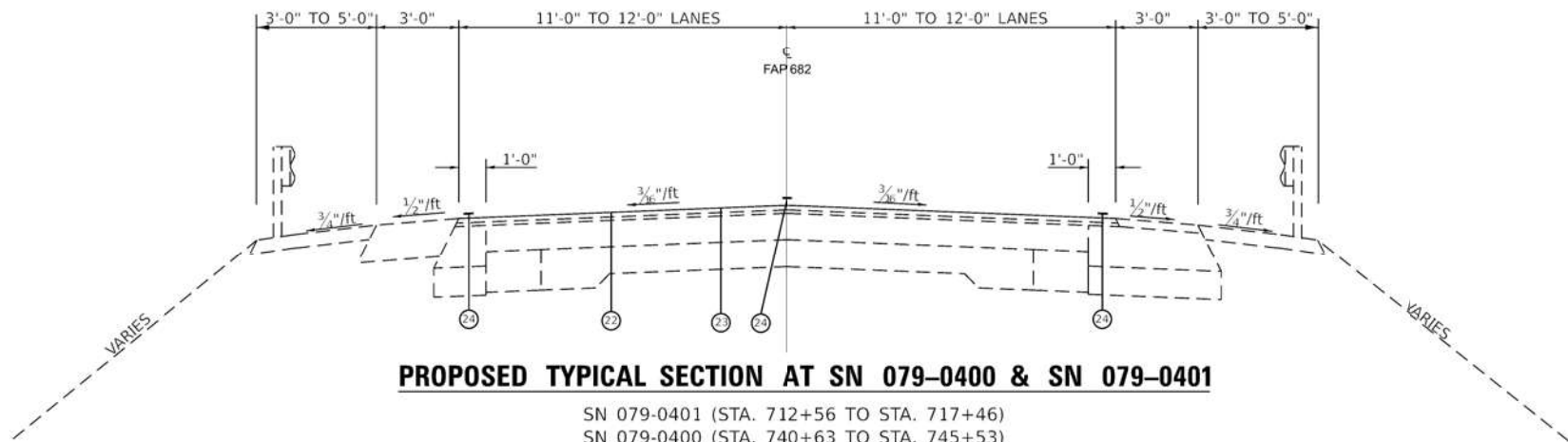
PROPOSED TYPICAL SECTION

STA. 658+60 TO STA. 661+25
STA. 667+88 TO STA. 669+48
STA. 671+02 TO STA. 672+97
STA. 681+43 TO STA. 683+36
STA. 686+83 TO STA. 690+60
STA. 696+07 TO STA. 707+78
STA. 709+78 TO STA. 712+56
STA. 717+46 TO STA. 740+63
STA. 745+53 TO STA. 791+95.60
STA. 793+51.99 TO STA. 797+82
STA. 797+82 TO STA. 805+00
STA. 805+00 TO STA. 851+38
STA. 854+18 TO STA. 859+05
STA. 861+07 TO STA. 871+05



PROPOSED TYPICAL SECTION AT GUTTER LOCATIONS

STA. 661+25 TO STA. 667+88 LT
STA. 669+48 TO STA. 671+02 RT
STA. 672+97 TO STA. 681+43 RT
STA. 683+36 TO STA. 686+83 RT
STA. 690+60 TO STA. 696+07 RT
STA. 707+78 TO STA. 709+78 LT
STA. 851+38 TO STA. 854+18 RT
STA. 859+05 TO STA. 861+07 LT



PROPOSED TYPICAL SECTION AT SN 079-0400 & SN 079-0401

SN 079-0401 (STA. 712+56 TO STA. 717+46)
SN 079-0400 (STA. 740+63 TO STA. 745+53)

LEGEND

- 1 EXISTING P.C.C. PAVEMENT 9-6-9
- 2 EXISTING BITUMINOUS OVERLAY 6" (±)
- 3 EXISTING RESURFACING
- 4 EXISTING BASE COURSE WIDENING 9"
- 5 EXISTING HOT-MIX ASPHALT SHOULDER, 8"
- 6 EXISTING AGGREGATE SHOULDERS, 6"
- 7 EXISTING HOT-MIX ASPHALT BASE COURSE WIDENING, 12"
- 8 EXISTING LEVELING BINDER
- 9 EXISTING HOT-MIX ASPHALT SURFACE COURSE, 1 1/2"
- 10 EXISTING HOT-MIX ASPHALT SHOULDER, 2"
- 11 EXISTING GUARDRAIL
- 12 EXISTING SUB-BASE GRANULAR MATERIAL, TYPE A, 12"
- 13 EXISTING STRIP REFLECTIVE CRACK CONTROL
- 14 EXISTING GUTTER
- 15 EXISTING HOT-MIX ASPHALT STABILIZATION
- 16 OMITTED
- 17 EXISTING HOT-MIX ASPHALT BINDER COURSE (VARIES 2 1/4" TO 4")
- 18 EXISTING HOT-MIX ASPHALT SURFACE COURSE, MIX "C", N70, 1 1/2"
- 19 EXISTING HOT-MIX ASPHALT SHOULDERS, 2 1/4"
- 20 EXISTING AGGREGATE SHOULDER WEDGE, TYPE B
- 21 EXISTING SHOULDER RUMBLE STRIPS, 8"
- 22 PROPOSED BITUMINOUS MATERIALS (TACK COAT)
- 23 PROPOSED MICRO-SURFACING, SINGLE PASS
- 24 PROPOSED THERMOPLASTIC PAVEMENT MARKING

MODEL: -CORRECT NEW TYPICAL SHEET 3 (Sheet)
FILE NAME: c:\pw\work\john.p.green@illinois.gov\0969735\08784-ahb-typical.dgn

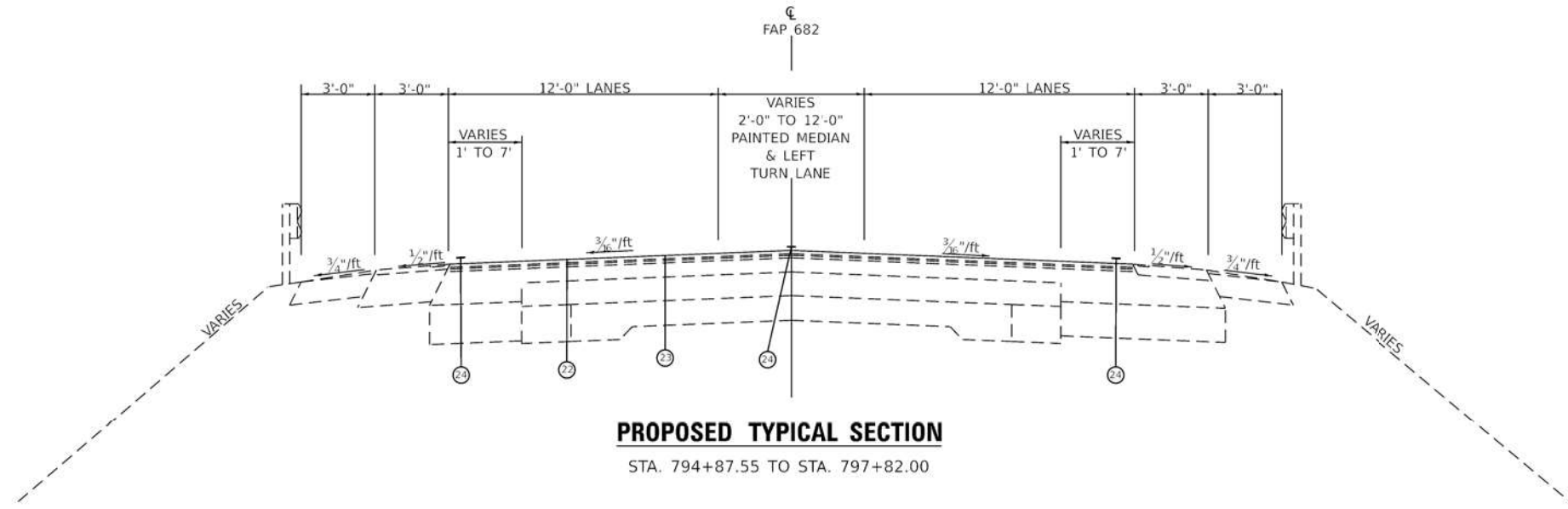
USER NAME = John.P.Green	DESIGNED -	REVISED -
	DRAWN -	REVISED -
	CHECKED -	REVISED -
PLOT DATE = 12/11/2024	DATE -	REVISED -

STATE OF ILLINOIS
DEPARTMENT OF TRANSPORTATION

TYPICAL SECTIONS

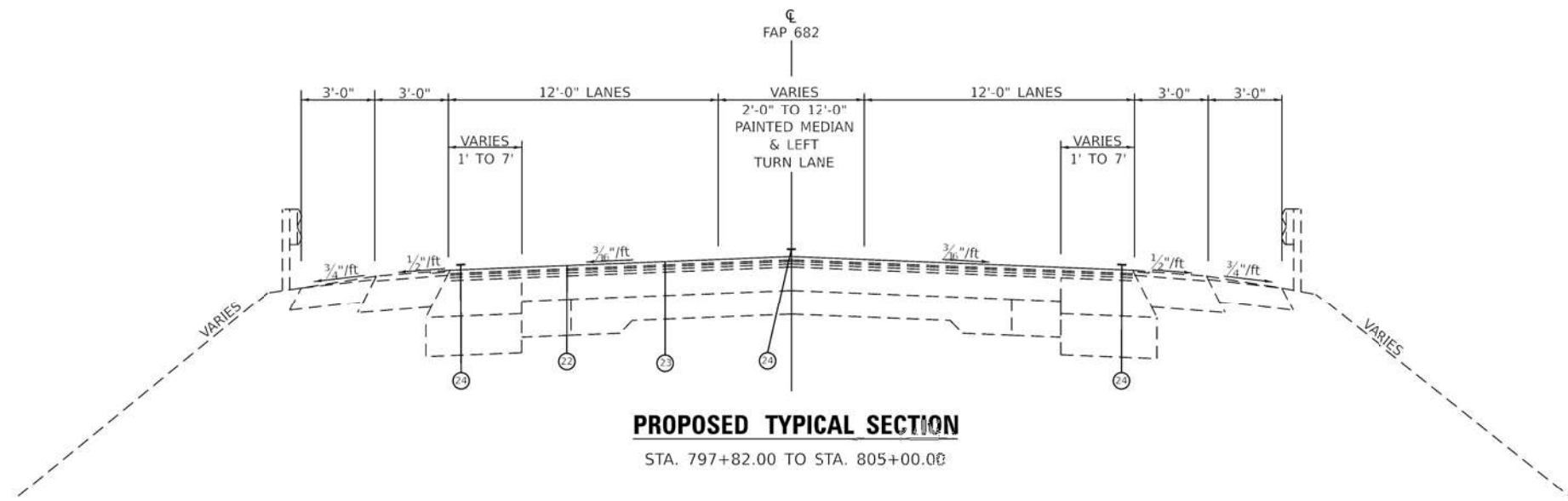
SCALE: SHEET OF SHEETS STA. TO STA.

F.A.P. RTE.	SECTION	COUNTY	TOTAL SHEETS	SHEET NO.
682	21RS-4	RANDOLPH	18	6
CONTRACT NO. 76T84				
ILLINOIS FED. AID PROJECT				



PROPOSED TYPICAL SECTION

STA. 794+87.55 TO STA. 797+82.00



PROPOSED TYPICAL SECTION

STA. 797+82.00 TO STA. 805+00.00

LEGEND

- ① EXISTING P.C.C. PAVEMENT 9-6-9
- ② EXISTING BITUMINOUS OVERLAY 6" (±)
- ③ EXISTING RESURFACING
- ④ EXISTING BASE COURSE WIDENING 9"
- ⑤ EXISTING HOT-MIX ASPHALT SHOULDER, 8"
- ⑥ EXISTING AGGREGATE SHOULDERS, 6"
- ⑦ EXISTING HOT-MIX ASPHALT BASE COURSE WIDENING, 12"
- ⑧ EXISTING LEVELING BINDER
- ⑨ EXISTING HOT-MIX ASPHALT SURFACE COURSE, 1 1/2"
- ⑩ EXISTING HOT-MIX ASPHALT SHOULDER, 2"
- ⑪ EXISTING GUARDRAIL
- ⑫ EXISTING SUB-BASE GRANULAR MATERIAL, TYPE A, 12"
- ⑬ EXISTING STRIP REFLECTIVE CRACK CONTROL
- ⑭ EXISTING GUTTER
- ⑮ EXISTING HOT-MIX ASPHALT STABILIZATION
- ⑯ OMITTED
- ⑰ EXISTING HOT-MIX ASPHALT BINDER COURSE (VARIES 2 1/4" TO 4")
- ⑱ EXISTING HOT-MIX ASPHALT SURFACE COURSE, MIX "C", N70, 1 1/2"
- ⑲ EXISTING HOT-MIX ASPHALT SHOULDERS, 2 1/4"
- ⑳ EXISTING AGGREGATE SHOULDER WEDGE, TYPE B
- ㉑ EXISTING SHOULDER RUMBLE STRIPS, 8"
- ㉒ PROPOSED BITUMINOUS MATERIALS (TACK COAT)
- ㉓ PROPOSED MICRO-SURFACING, SINGLE PASS
- ㉔ PROPOSED THERMOPLASTIC PAVEMENT MARKING

MODEL: -CORRECT NEW TYPICAL SHEET 4 (Sheet)
FILE NAME: c:\pw\work\paw\john.p.green@illinois.gov\0969735\0876184-ahh-typical.dgn

USER NAME = John.P.Green	DESIGNED -	REVISED -
	DRAWN -	REVISED -
	CHECKED -	REVISED -
PLOT DATE = 12/11/2024	DATE -	REVISED -

STATE OF ILLINOIS
DEPARTMENT OF TRANSPORTATION

TYPICAL SECTIONS

SCALE: SHEET OF SHEETS STA. TO STA.

F.A.P. RTE.	SECTION	COUNTY	TOTAL SHEETS	SHEET NO.
682	21RS-4	RANDOLPH	18	7
CONTRACT NO. 76T84				
ILLINOIS FED. AID PROJECT				

MODEL: Schedule-2 (Sheet)
FILE NAME: c:\pw_work\pwdd\john.p.green@illinois.gov\d0969735\DJ76T84-sht-schedule.dgn

RESURFACING SCHEDULE					
LOCATION			WIDTH	BITUMINOUS MATERIALS (TACK COAT)	MICRO-SURFACING, SINGLE PASS
STA	TO	STA	FOOT	POUND	SQ YD
658+60	TO	658+95	22	19	86
658+95	TO	661+25	22	127	562
661+25	TO	667+88	23	381	1694
667+88	TO	669+48	22	88	391
669+48	TO	671+02	23	89	394
671+02	TO	672+97	22	107	477
672+97	TO	681+43	23	486	2162
681+43	TO	683+36	22	106	472
683+36	TO	686+83	23	200	887
686+83	TO	690+60	22	207	922
690+60	TO	696+07	23	315	1398
696+07	TO	707+78	22	644	2862
707+78	TO	709+78	23	115	511
709+78	TO	712+56	22	153	680
712+56	TO	717+46	23	282	1252
717+46	TO	740+63	22	1274	5664
740+63	TO	745+53	23	282	1252
745+53	TO	791+96	22	2553	11349
793+52	TO	794+88	22	75	331
794+88	TO	797+82	31	228	1014
797+82	TO	800+15	36	209	930
800+15	TO	801+77	36	146	648
801+77	TO	805+00	31	250	1113
805+00	TO	851+38	22	2551	11337
851+38	TO	854+18	23	161	716
854+18	TO	859+05	22	268	1190
859+05	TO	861+07	23	116	516
861+07	TO	870+70	22	530	2354
870+70	TO	871+05	22	19	86
TOTAL				11981	53249

*The application rate of the Tack Coat is 0.025 lb/sqft

**Omission at 791+95.6 to 793+52

	USER NAME = John.P.Green	DESIGNED -	REVISED -	STATE OF ILLINOIS DEPARTMENT OF TRANSPORTATION	RESURFACING SCHEDULE			F.A.P. RTE.	SECTION	COUNTY	TOTAL SHEETS	SHEET NO.
		DRAWN -	REVISED -					682	21RS-4	RANDOLPH	18	8
		CHECKED -	REVISED -					CONTRACT NO. 76T84				
	PLOT DATE = 1/30/2025	DATE -	REVISED -		SCALE:	SHEET	OF	SHEETS	STA.	TO STA.	ILLINOIS FED. AID PROJECT	

MODEL: Schedule-4 (Sheet)
FILE NAME: c:\pw_work\pwdd\john.p.green@illinois.gov\0969735\076T84-sht-schedule.dgn

LOCATION			THERMOPLASTIC PAVEMENT MARKING							LETTERS & SYMBOLS	RAISED REFLECTIVE PAVEMENT MARKER		RAISED REFLECTIVE PAVEMENT MARKER REMOVAL	SHORT TERM PAVEMENT MARKING	SHORT TERM PAVEMENT MARKING REMOVAL	PAVEMENT MARKING REMOVAL - WATER BLASTING
			LINE 6"						LINE 12"							
			WHITE SKIP-DASH (TURN LANE)	SOLID WHITE (TURN LANE)	SOLID WHITE (EDGE LINE)	SOLID YELLOW (CENTERLINE)	DOUBLE YELLOW (CENTERLINE)	YELLOW SKIP-DASH (CENTERLINE)	SOLID YELLOW (DIAGONAL)		1-WAY AMBER	1-WAY CRYSTAL				
STA TO STA			FOOT	FOOT	FOOT	FOOT	FOOT	FOOT	FOOT	SQ FT	EACH	EACH	EACH	FOOT	SQ FT	SQ FT
658+65	TO	786+00	0	0	25297	7092	1191	3176	0	0	159	0	159	1274	425	12252
786+00	TO	805+00	41	155	2674	244	3254	189	181	31	54	5	59	190	63	2277
805+00	TO	871+00	0	0	13140	2344	0	1643	0	0	82	0	82	660	220	5709
SUBTOTAL			41	155	41111	9680	4445	5008	181	31	295	5	300	2124	708	20238
TOTAL			60440						181	31	300		300	2124	708	20238

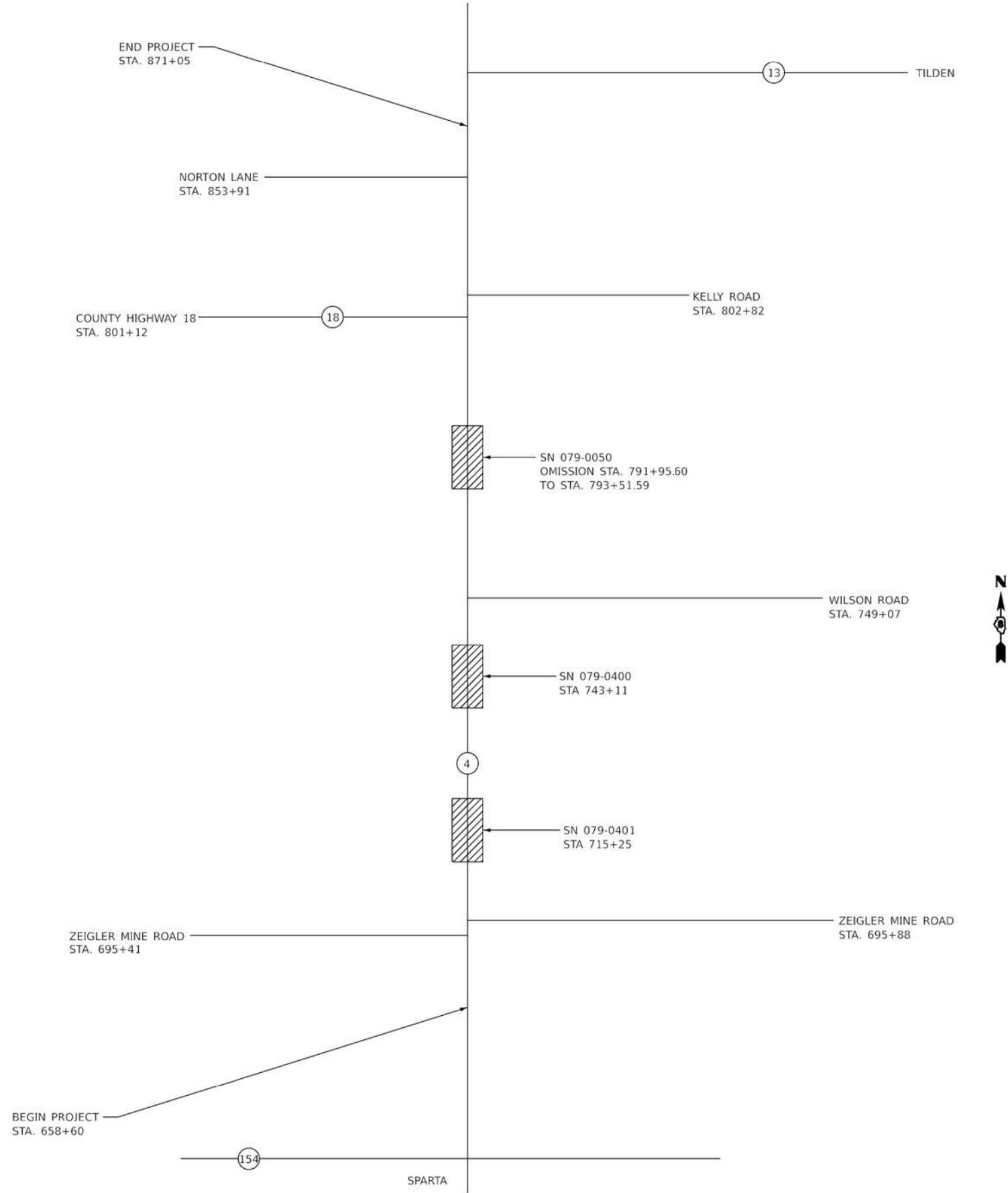
NOTE: UNLESS OTHERWISE NOTED BELOW, CENTERLINE MARKINGS WILL BE YELLOW SKIP DASHES:

STA. 658+60 TO STA. 663+65 - SOLID YELLOW ON SB SIDE
STA. 669+84 TO STA. 678+97 - SOLID YELLOW ON NB SIDE
STA. 680+39 TO STA. 689+77 - SOLID YELLOW ON SB SIDE
STA. 698+64 TO STA. 710+21 - SOLID YELLOW ON NB SIDE
STA. 710+21 TO STA. 722+12 - DOUBLE YELLOW
STA. 722+12 TO STA. 758+26 - SOLID YELLOW ON SB SIDE
STA. 786+00 TO STA. 805+00 - SEE PAVEMENT MARKING SHEETS
STA. 809+32 TO STA. 817+58 - SOLID YELLOW ON NB SIDE
STA. 820+35 TO STA. 833+25 - SOLID YELLOW ON SB SIDE
STA. 868+42 TO STA. 870+05 - SOLID YELLOW ON NB SIDE

TEMPORARY PAVEMENT MARKING SHALL BE APPLIED IN ACCORDANCE WITH THE APPLICABLE PORTIONS OF THE PERMANENT PAVEMENT MARKING SCHEDULE.

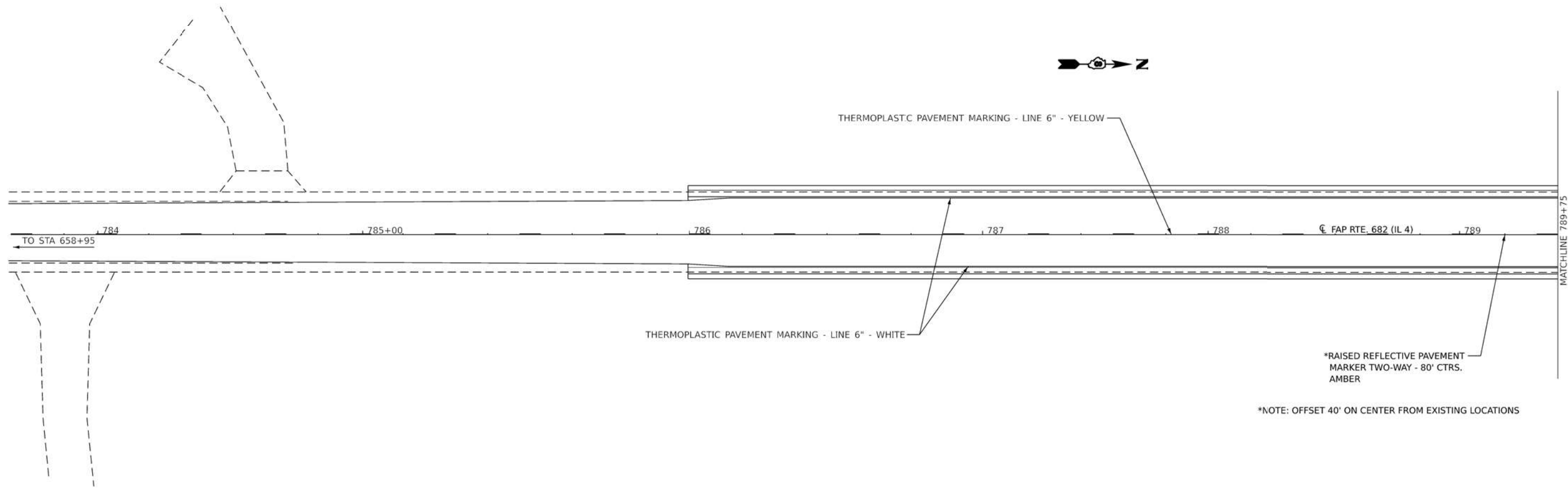
	USER NAME = John.P.Green	DESIGNED -	REVISED -	STATE OF ILLINOIS DEPARTMENT OF TRANSPORTATION	SCHEDULE OF QUANTITIES			F.A.P. RTE.	SECTION	COUNTY	TOTAL SHEETS	SHEET NO.
		DRAWN -	REVISED -					682	21RS-4	RANDOLPH	18	9
		CHECKED -	REVISED -					CONTRACT NO. 76T84				
	PLOT DATE = 12/5/2024	DATE -	REVISED -		SCALE:	SHEET	OF	SHEETS	STA.	TO STA.	ILLINOIS FED. AID PROJECT	

MODEL: Untitled-3 [Sheet]
FILE NAME: c:\pw\work\dwg\john.p.green@illinois.gov\0969735\0676T84-ahh-typical.dgn



	USER NAME = John.P.Green	DESIGNED -	REVISED -	STATE OF ILLINOIS DEPARTMENT OF TRANSPORTATION	LOCATION MAP			F.A.P. RTE.	SECTION	COUNTY	TOTAL SHEETS	SHEET NO.
		DRAWN -	REVISED -					682	21RS-4	RANDOLPH	18	10
		CHECKED -	REVISED -					CONTRACT NO.76T84				
	PLOT DATE = 12/4/2024	DATE -	REVISED -		SCALE:	SHEET	OF	SHEETS	STA.	TO STA.	ILLINOIS FED. AID PROJECT	

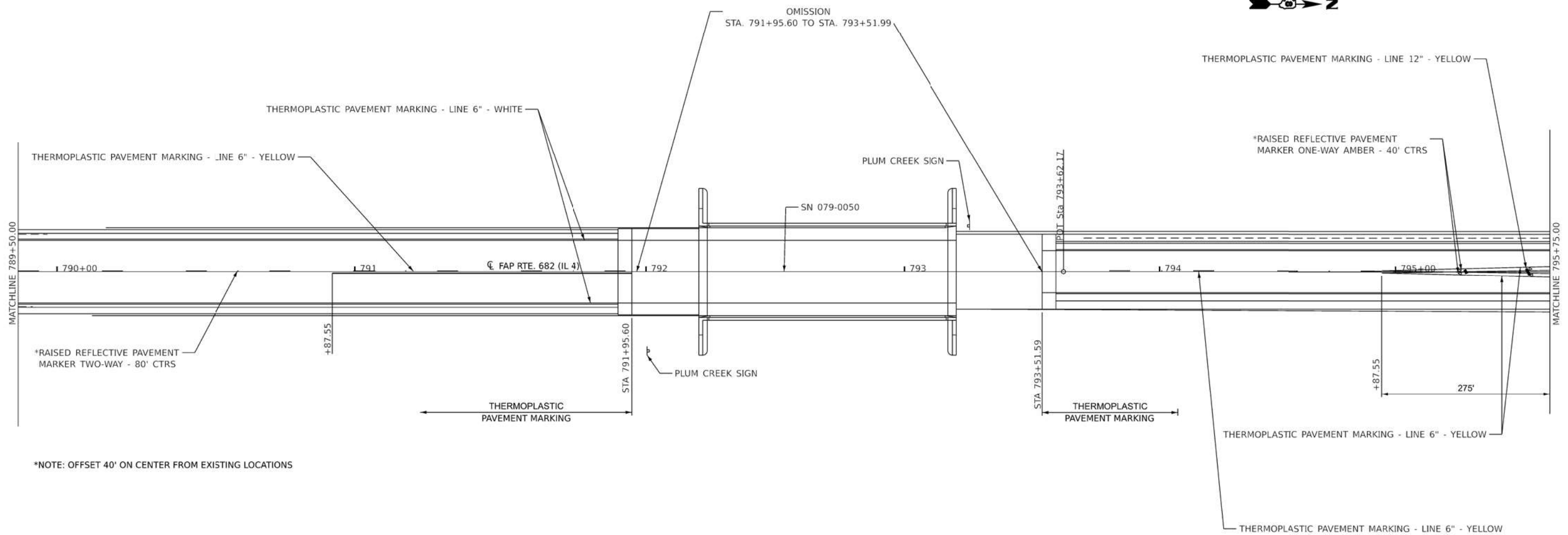
MODEL: Untitled-4 [Sheet]
FILE NAME: c:\pwworking\john.p.green@illinois.gov\0969735\06784-ahh-typical.dgn



*NOTE: OFFSET 40' ON CENTER FROM EXISTING LOCATIONS

	USER NAME = John.P.Green	DESIGNED -	REVISED -	STATE OF ILLINOIS DEPARTMENT OF TRANSPORTATION	PAVEMENT MARKING DETAILS				F.A.P. RTE.	SECTION	COUNTY	TOTAL SHEETS	SHEET NO.
		DRAWN -	REVISED -						682	21RS-4	RANDOLPH	18	11
		CHECKED -	REVISED -						CONTRACT NO. 76T84				
	PLOT DATE = 12/4/2024	DATE -	REVISED -		SCALE:	SHEET	OF	SHEETS	STA.	TO STA.	ILLINOIS FED. AID PROJECT		

MODEL: Untitled-6 [Sheet]
FILE NAME: c:\pw\work\dwg\john.p.green@illinois.gov\0969735\06784\sh-typical.dgn



*NOTE: OFFSET 40' ON CENTER FROM EXISTING LOCATIONS

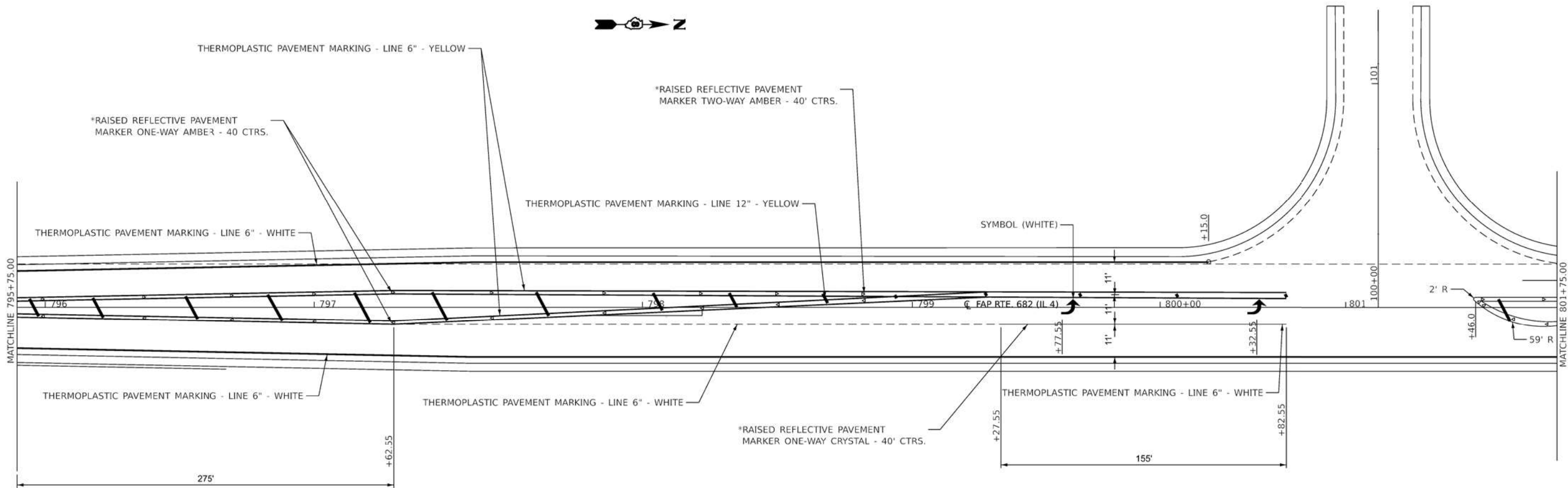
USER NAME	= John.P.Green	DESIGNED	-	REVISED	-
		DRAWN	-	REVISED	-
		CHECKED	-	REVISED	-
PLOT DATE	= 12/4/2024	DATE	-	REVISED	-

STATE OF ILLINOIS
DEPARTMENT OF TRANSPORTATION

PAVEMENT MARKING DETAILS

SCALE: SHEET OF SHEETS STA. TO STA.

F.A.P. RTE.	SECTION	COUNTY	TOTAL SHEETS	SHEET NO.
682	21RS-4	RANDOLPH	18	12
CONTRACT NO. 76T84				
ILLINOIS FED. AID PROJECT				



*NOTE: OFFSET 40' ON CENTER FROM EXISTING LOCATIONS

MODEL: Untitled-5 [Sheet]
FILE NAME: c:\pw\work\dwg\john.p.green@illinois.gov\0969735\08784-ahh-typical.dgn

USER NAME = John.P.Green	DESIGNED -	REVISED -
	DRAWN -	REVISED -
	CHECKED -	REVISED -
PLOT DATE = 12/4/2024	DATE -	REVISED -

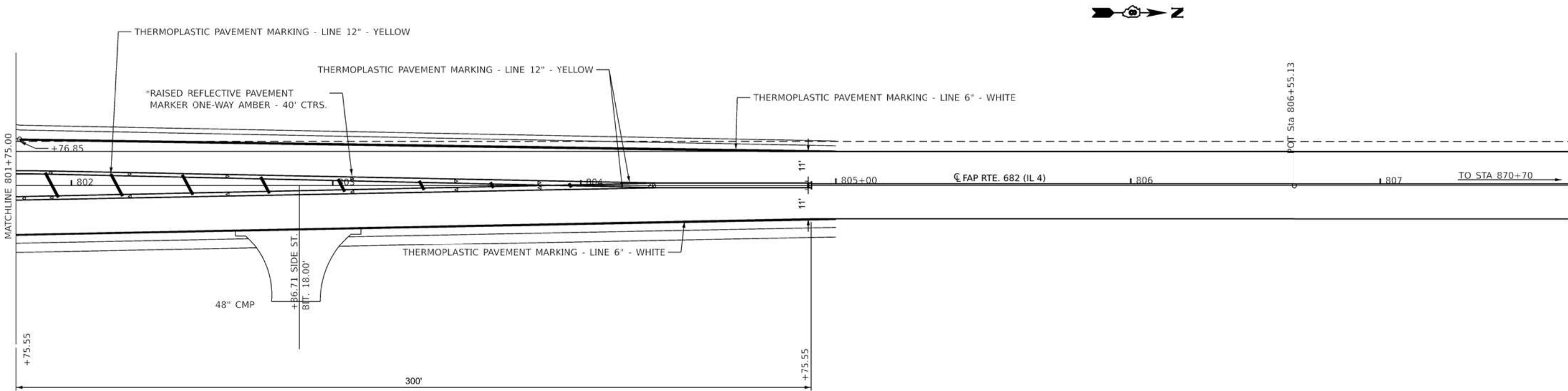
STATE OF ILLINOIS
DEPARTMENT OF TRANSPORTATION

PAVEMENT MARKING DETAILS

SCALE: SHEET OF SHEETS STA. TO STA.

F.A.P. RTE.	SECTION	COUNTY	TOTAL SHEETS	SHEET NO.
682	21RS-4	RANDOLPH	18	13
CONTRACT NO. 76T84				
ILLINOIS FED. AID PROJECT				

*NOTE: OFFSET 40' ON CENTER FROM EXISTING LOCATIONS



MODEL: Untitled-7 [Sheet]
FILE NAME: c:\pwworking\john.p.green@illinois.gov\0969735\06784-shh-typical.dgn

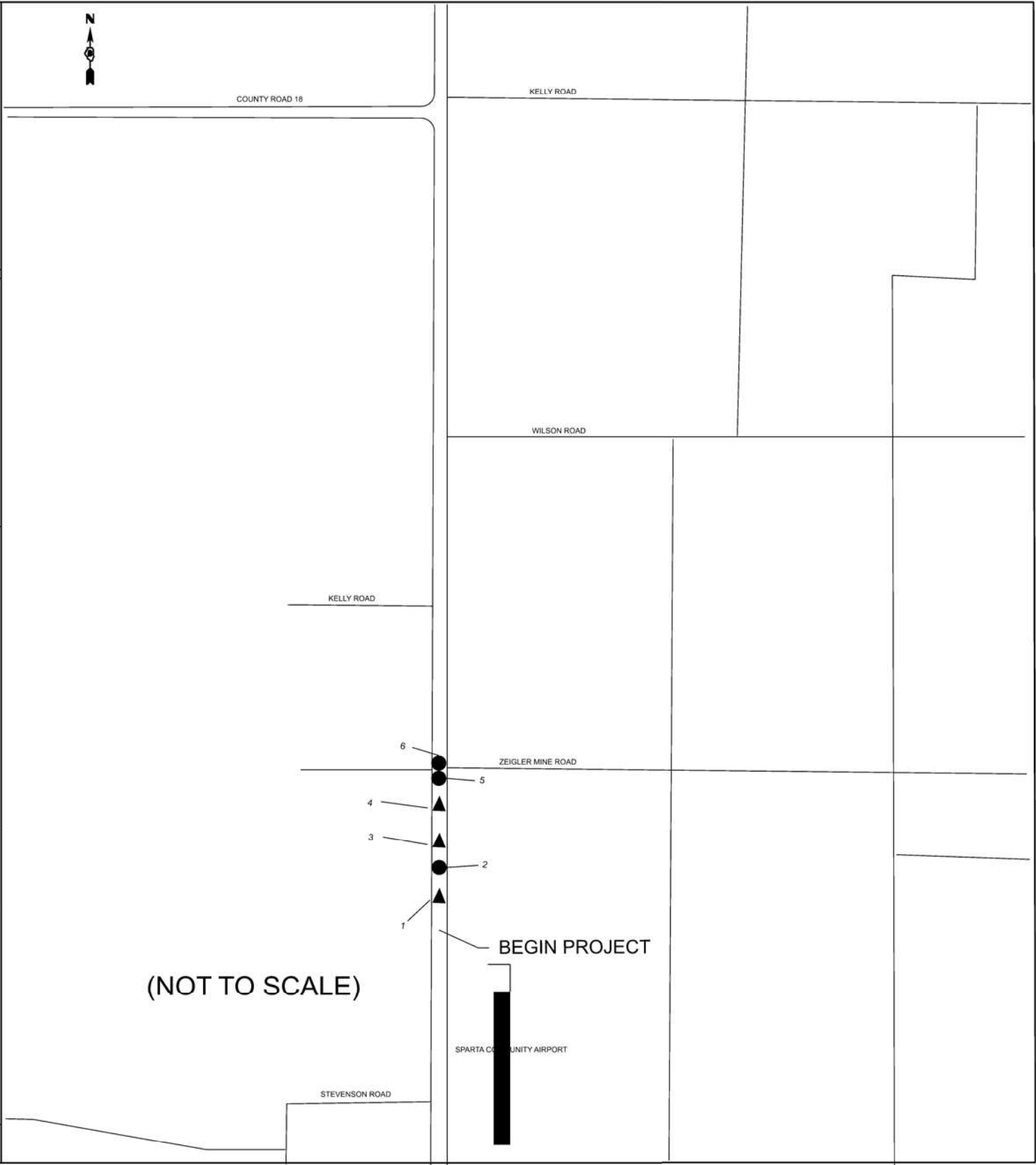
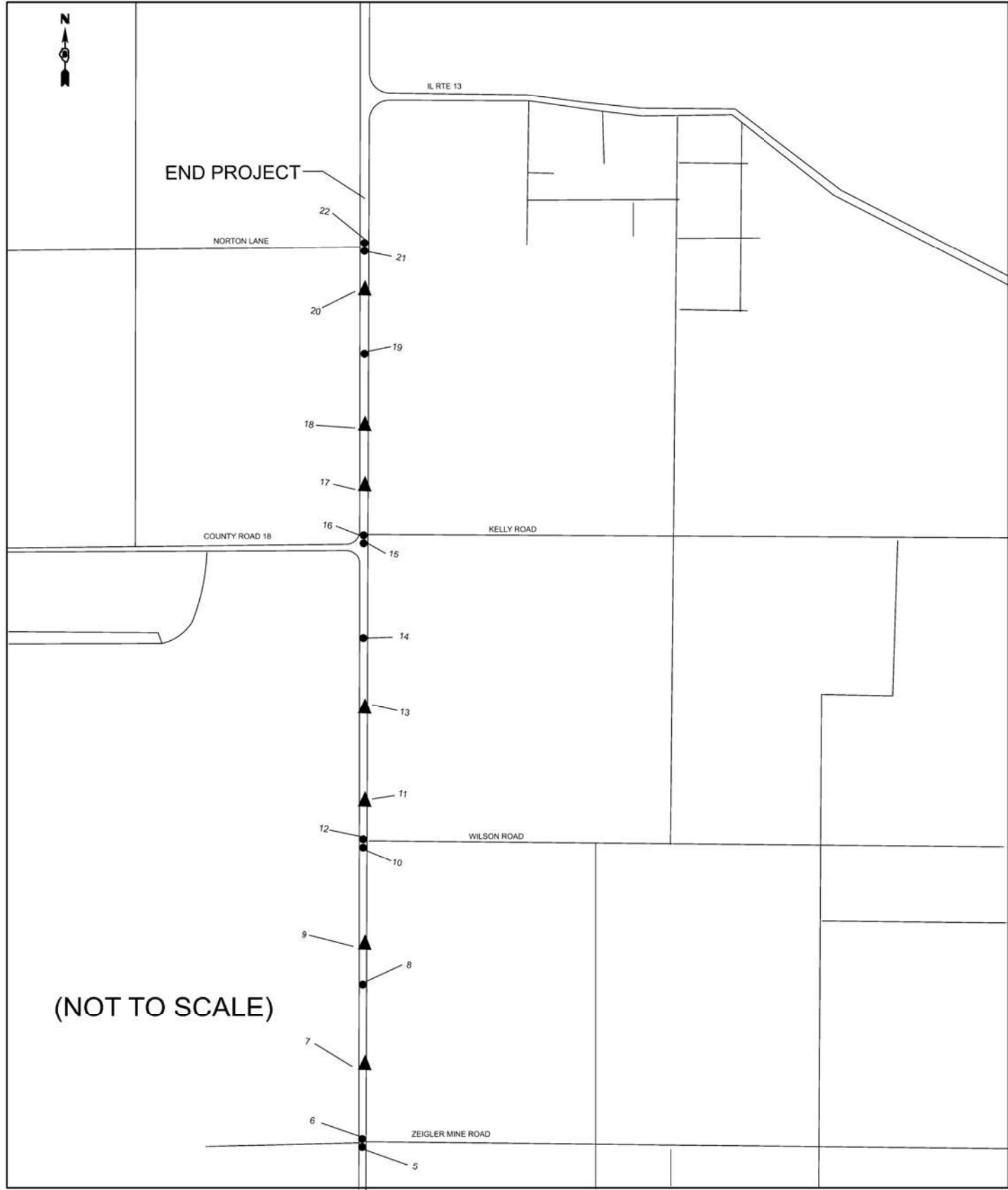
USER NAME	= John.P.Green	DESIGNED	-	REVISED	-
		DRAWN	-	REVISED	-
		CHECKED	-	REVISED	-
PLOT DATE	= 12/4/2024	DATE	-	REVISED	-

STATE OF ILLINOIS
DEPARTMENT OF TRANSPORTATION

PAVEMENT MARKING DETAILS			
SCALE:	SHEET	OF	SHEETS
	STA.	TO	STA.

F.A.P. RTE.	SECTION	COUNTY	TOTAL SHEETS	SHEET NO.
682	21RS-4	RANDOLPH	18	14
CONTRACT NO. 76T84				
ILLINOIS FED. AID PROJECT				

MODEL: Typical 5 (Sheet)
FILE NAME: c:\pw\work\jwd\john.p.green@illinois.gov\dd969735\06784-shh-typical.dgn



LEGEND

- SECTION CORNERS
- ▲ CENTERLINE MARKERS

NOTE: STAMPED STATIONS ON FOUND CENTERLINE DISKS DO NOT REFLECT PROJECT STATIONING.

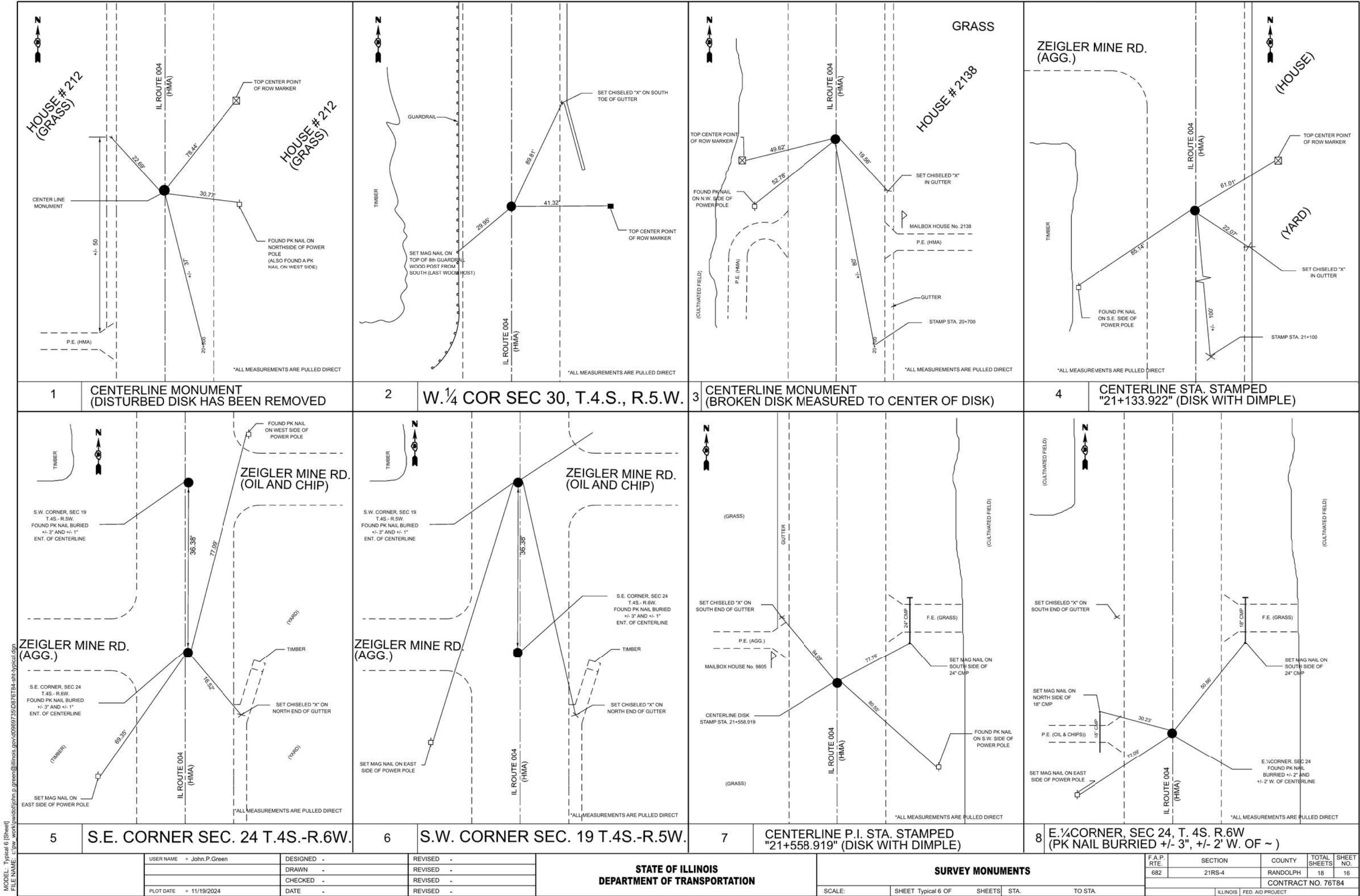
USER NAME = John.P.Green	DESIGNED -	REVISED -
	DRAWN -	REVISED -
	CHECKED -	REVISED -
PLOT DATE = 11/19/2024	DATE -	REVISED -

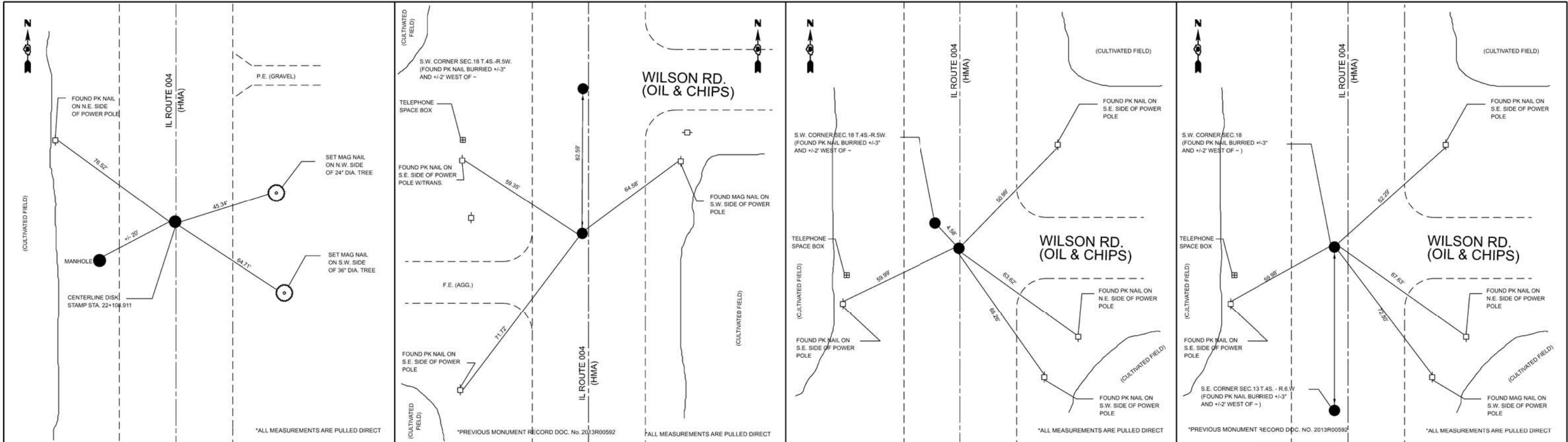
STATE OF ILLINOIS
DEPARTMENT OF TRANSPORTATION

SURVEY MONUMENTS

SCALE: SHEET Typical 5 OF SHEETS STA. TO STA.

F.A.P. RTE.	SECTION	COUNTY	TOTAL SHEETS	SHEET NO.
682	21RS-4	RANDOLPH	18	15
CONTRACT NO. 76T84				
ILLINOIS FED. AID PROJECT				





9

CENTERLINE P.I. STA. STAMPED "22+108.911"

10

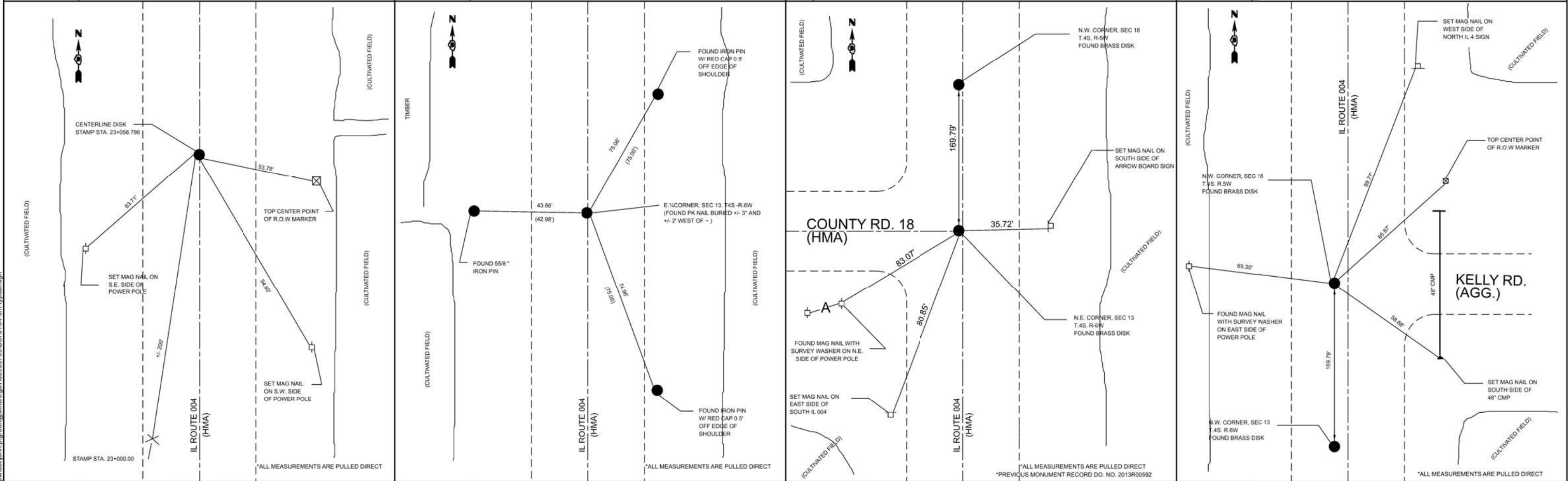
S.E. CORNER, SEC. 13, T.4S.-R.6W

11

CENTERLINE P.I. STA. STAMPED "22+8*3.922" (DISK WITH DIMPLE. * ILLEGIBLE NUMBER)

12

S.W. CORNER, SEC. 18, T.4S.-R.5W



13

CENTERLINE P.I. STA. 23+058.796 (DISK WITH DIMPLE)

14

E. 1/4 CORNER, SEC. 13, T.4S.-R.6W

15

N.E. CORNER, SEC. 13, T.4S.-R.6W

16

N.W. CORNER, SEC. 18, T.4S.-R.5W

MODEL: Typical 7 (Sheet)
FILE NAME: c:\pwworking\john.p.green@illinois.gov\d0969735\0676184-shr-typical.dgn

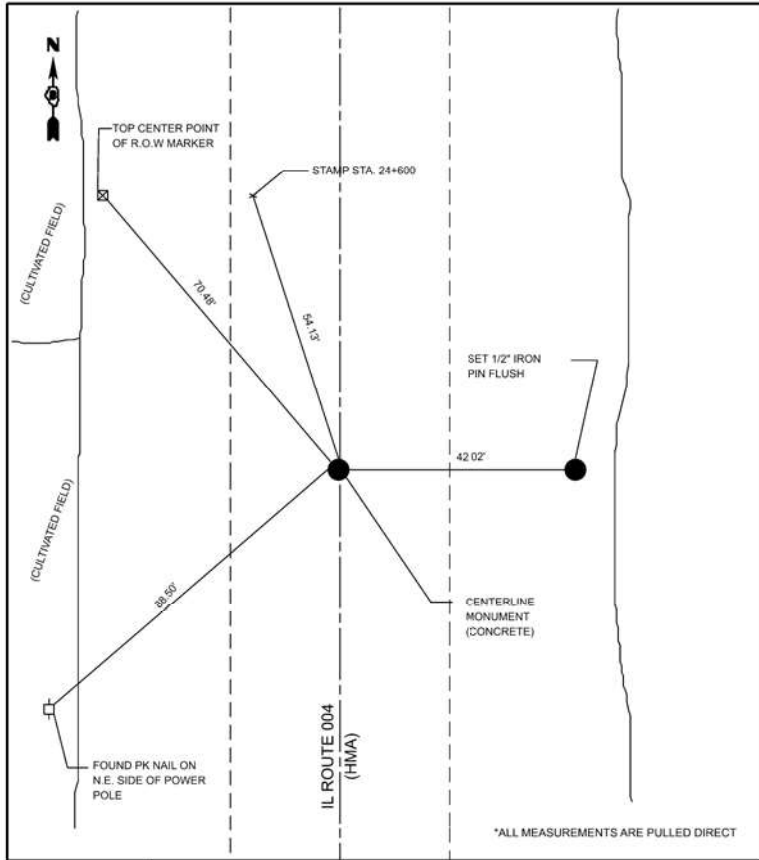
USER NAME	= John.P.Green	DESIGNED	-	REVISED	-
		DRAWN	-	REVISED	-
		CHECKED	-	REVISED	-
PLOT DATE	= 11/19/2024	DATE	-	REVISED	-

STATE OF ILLINOIS
DEPARTMENT OF TRANSPORTATION

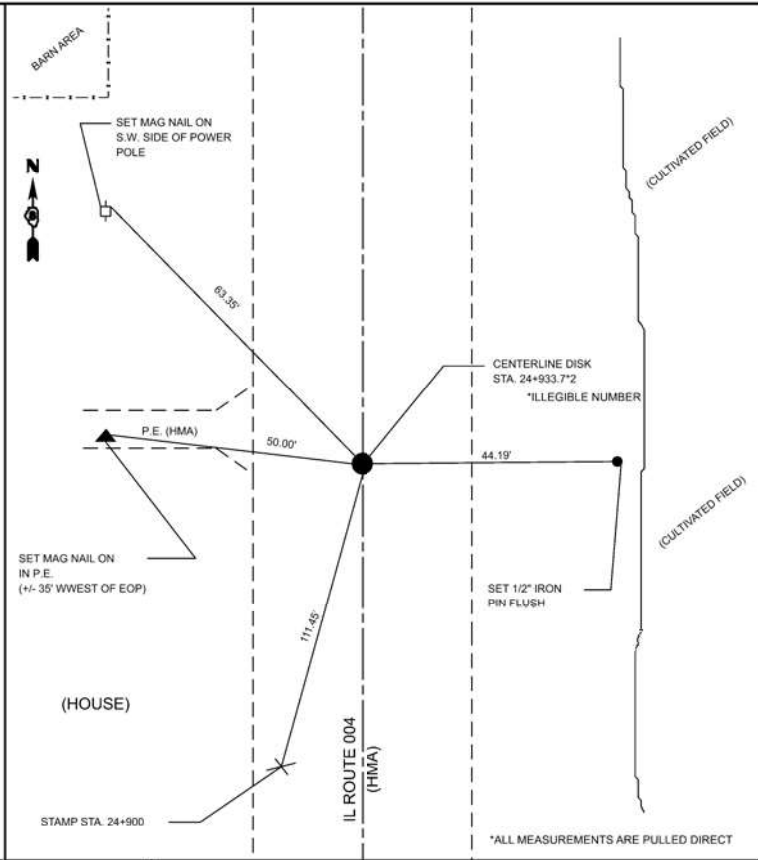
SURVEY MONUMENTS

SCALE: SHEET Typical 7 OF SHEETS STA. TO STA.

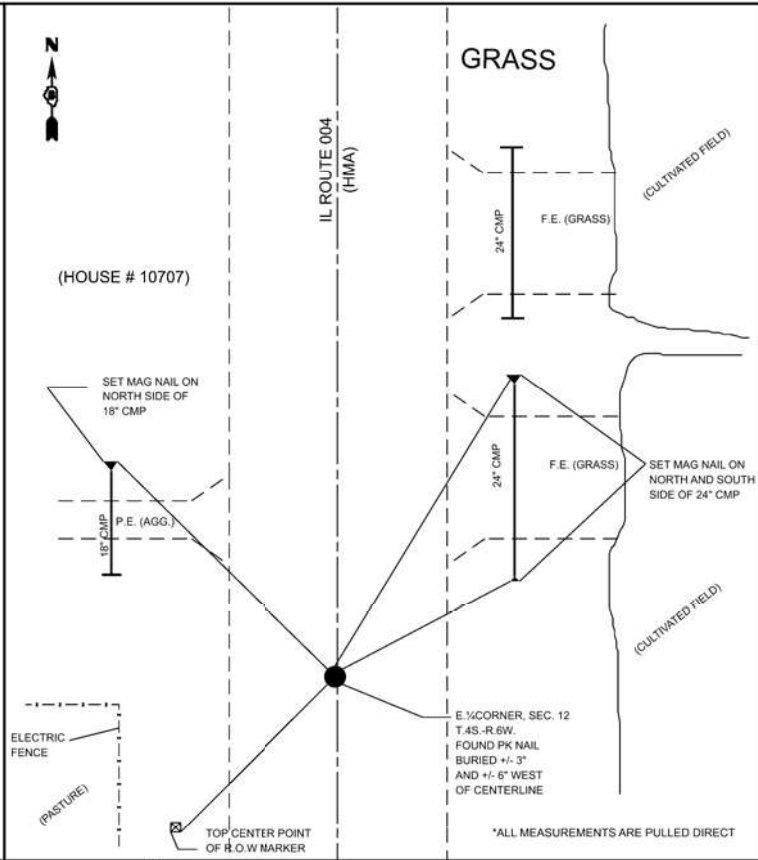
F.A.P. RTE.	SECTION	COUNTY	TOTAL SHEETS	SHEET NO.
682	21RS-4	RANDOLPH	18	17
CONTRACT NO. 76T84				
ILLINOIS FED. AID PROJECT				



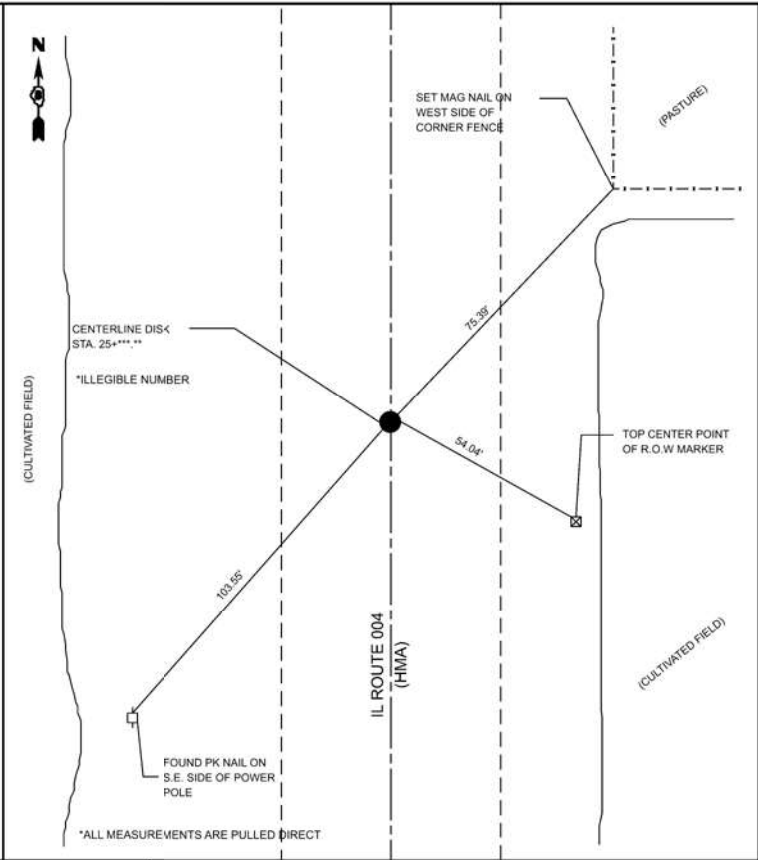
17 CENTERLINE MONUMENT
(DISTURBED DISK HAS BEEN REMOVED)



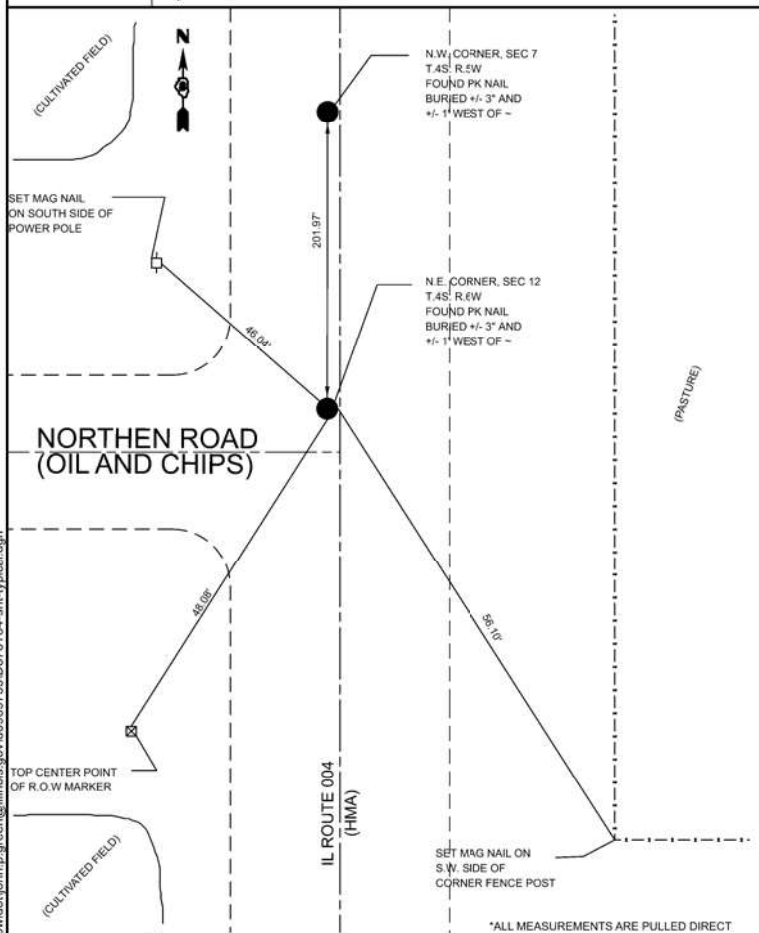
18 CENTERLINE STA. STAMPED
"24+933.7*2" (DISK WITH DIMPLE)



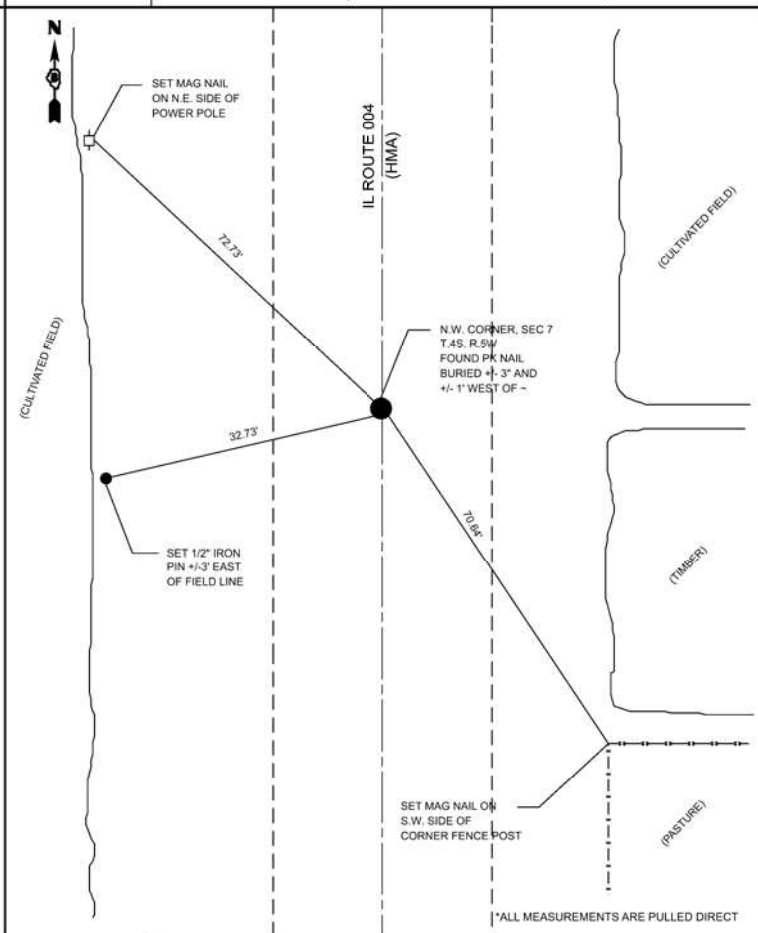
19 E. 1/4 CORNER, SEC. 12, T4S-R.6W



20 CENTERLINE STA. STAMPED
"25+*** **" (DISK WITH DIMPLE)



21 N.E. CORNER SEC. 12 T.4S.-R.6W.



22 N.E. CORNER SEC. 7 T.4S.-R.5W.

MODEL: Typical 8 (Sheet)
FILE NAME: c:\pw\work\jwd\john.p.green@illinois.gov\0969735\06784-sh-typical.dgn

USER NAME	= John.P.Green	DESIGNED	-	REVISED	-
		DRAWN	-	REVISED	-
		CHECKED	-	REVISED	-
PLOT DATE	= 11/19/2024	DATE	-	REVISED	-

STATE OF ILLINOIS
DEPARTMENT OF TRANSPORTATION

SURVEY MONUMENTS

SCALE: SHEET Typical 8 OF SHEETS STA. TO STA.

F.A.P. RTE.	SECTION	COUNTY	TOTAL SHEETS	SHEET NO.
682	21RS-4	RANDOLPH	18	18
CONTRACT NO. 76T84				
ILLINOIS FED. AID PROJECT				