

INDEX OF SHEETS

- 1 COVER SHEET
- 2 SUMMARY OF QUANTITIES
- 3-4 TYPICAL SECTIONS AND GENERAL NOTES
- 5 SCHEDULE OF QUANTITIES
- 6 SITE PLAN AND CONTROL SHEET
- 7-11 ROADWAY PLAN SHEETS
- 12-14 TRAFFIC CONTROL PLANS
- 15 TUBULAR STEEL GATE DETAIL
- 16 MISCELLANEOUS DETAILS

HIGHWAY STANDARDS

- 000001-06 STANDARD SYMBOLS, ABBREVIATIONS AND PATTERNS
- 001006 DECIMAL OF AN INCH AND OF A FOOT
- 701001-02 OFF-ROAD OPERATIONS 2L, 2W, MORE THAN 15' (4.5 m) AWAY
- 701006-04 OFF-ROAD OPERATIONS 2L, 2W, 15' (4.5 m) TO 24" (600 mm) FROM PAVEMENT EDGE
- 701301-04 LANE CLOSURE, 2L, 2W SHORT TIME OPERATIONS
- 701901-02 TRAFFIC CONTROL DEVICES
- 720001-01 SIGN PANEL MOUNTING DETAILS
- 720006-03 SIGN PANEL ERECTION DETAILS
- 780001-03 TYPICAL PAVEMENT MARKINGS
- B.L.R. 21-9 TYPICAL APPLICATION OF TRAFFIC OF TRAFFIC CONTROL DEVICES FOR CONSTRUCTION ON RURAL LOCAL HIGHWAYS

03-08-13 LETTING ITEM 122

STATE OF ILLINOIS

DEPARTMENT OF TRANSPORTATION

DIVISION OF HIGHWAYS

IDOT / IDNR STATEWIDE

MERMET LAKE STATE FISH AND WILDLIFE AREA
SECTION PARK ROADS

MASSAC COUNTY

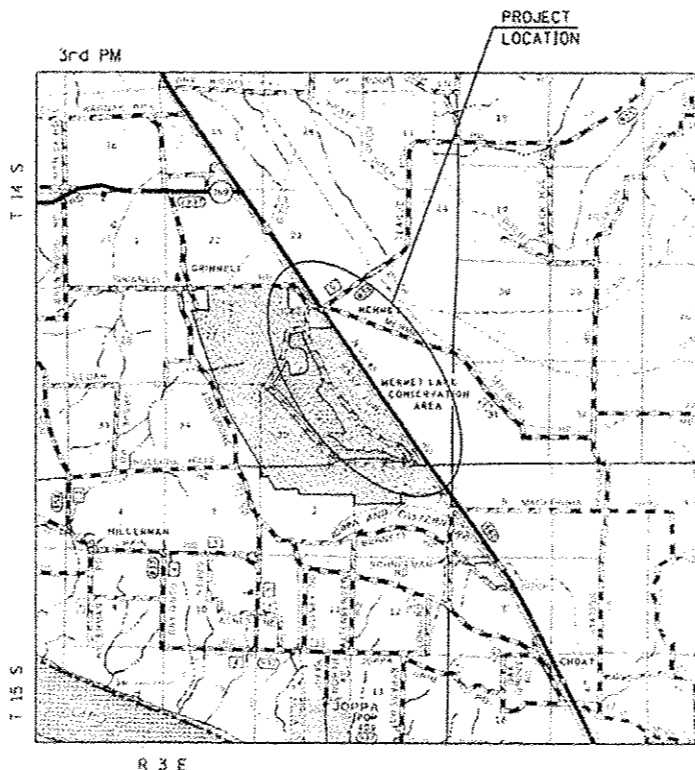
IDOT PROJECT NO.

IDNR PROJECT NO. 5-13-001

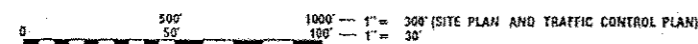
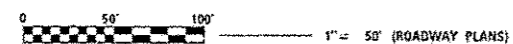
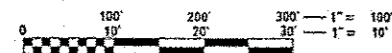
C-30-006-13

F.A. RTE.	SECTION	COUNTY	TOTAL SHEETS	SHEET NO.
	PARK ROADS	MASSAC	18	1
ILLINOIS			CONTRACT NO. 46253	

P-30-001-12



LOCATION MAP



FULL SIZE PLANS HAVE BEEN PREPARED USING STANDARD ENGINEERING SCALES. REDUCED SIZED PLANS WILL NOT CONFORM TO STANDARD SCALES. IN MAKING MEASUREMENTS ON REDUCED PLANS, THE ABOVE SCALES MAY BE USED.

J.U.L.I.E.
JOINT UTILITY LOCATION INFORMATION FOR EXCAVATION
1-800-892-0123
OR 811

PROJECT ENGINEER: LANCE KIDD (217) 785-2933

CONTRACT NO. 46253



SEAL

SIGNATURE: *Jack Blakehorst*
DATE SIGNED: 12/10/12
LICENSE EXPIRATION DATE: 11/30/13

STATE OF ILLINOIS
DEPARTMENT OF TRANSPORTATION
DIVISION OF HIGHWAYS

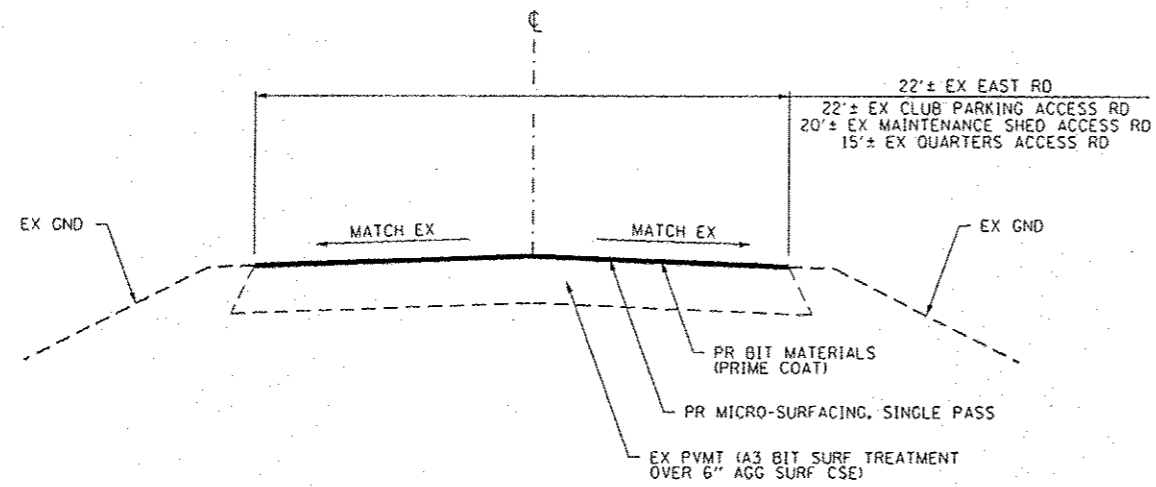
SUBMITTED: Feb 1 2013
Bill Z. Frey / *bl*
DEPUTY DIRECTOR OF HIGHWAYS, REGION ENGINEER

Feb 1 2013
John D. Baranzelli, P.E. / *jb*
ENGINEER OF DESIGN AND ENVIRONMENT

Feb 1 2013
Omer Osman, P.E. / *or*
DIRECTOR OF HIGHWAYS, CHIEF ENGINEER

PRINTED BY THE AUTHORITY
OF THE STATE OF ILLINOIS

CMT
CRAWFORD, MURPHY & TILLY, INC.
CONSULTING ENGINEERS
License No. 184-000613



ROADWAY - TYPICAL #1

EAST ROAD: STA 5+09.48 TO STA 100+62.85
 MAINTENANCE SHED ACCESS ROAD: STA 202+54.80 TO STA 213+26.95
 QUARTERS ACCESS ROAD: STA 302+60.68 TO STA 307+51.66
 CLUB PARKING ACCESS ROAD: STA 502+44.64 TO STA 506+33.03

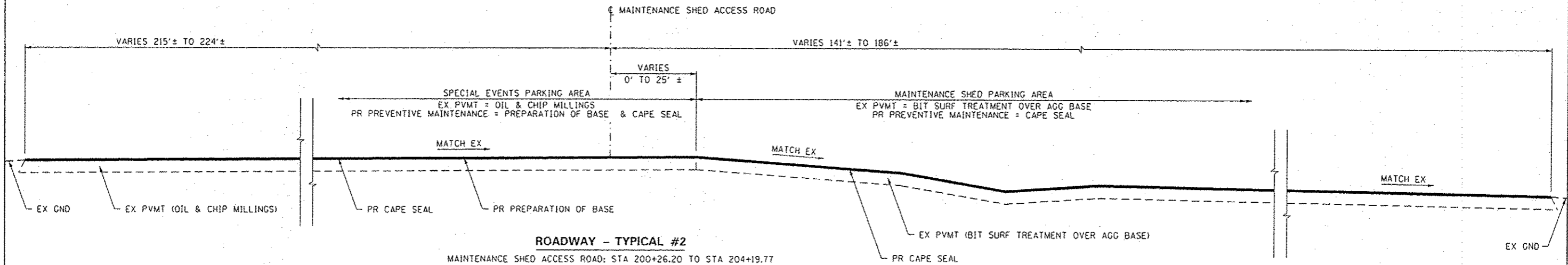
NOTES:

1. THE AGGREGATES FOR THE MICRO-SURFACING SHALL MEET THE FRICTION AGGREGATE REQUIREMENTS FOR MIXTURE C IN ARTICLE 1004.03 (G).
2. CA 16 OR CA 20 AGGREGATE GRADATION SHALL BE USED FOR THE A-1 BITUMINOUS SURFACE TREATMENT PORTION OF THE CAPE SEAL.

GENERAL NOTES:

1. THE LOCATIONS, SIZE, MATERIAL, DESCRIPTION OR TYPE OF EXISTING UNDERGROUND UTILITIES INDICATED ON THE PLANS ARE APPROXIMATE LOCATIONS BASED ON IN PART, INFORMATION SUPPLIED BY OTHERS AND IS NOT REPRESENTED AS BEING ACCURATE, SUFFICIENT OR COMPLETE. PRIOR TO THE START OF CONSTRUCTION, THE CONTRACTOR SHALL ARRANGE TO HAVE ALL UTILITIES INCLUDING WATER, GAS, ELECTRIC, STORM SEWER, SANITARY SEWER, TELEPHONE, AND CABLE T.V. LOCATED AND SUITABLY MARKED. SHOULD A UTILITY BE IN CONFLICT WITH THE PROPOSED CONSTRUCTION, THE OWNER'S REPRESENTATIVE SHALL BE NOTIFIED AT ONCE. THE CONTRACTOR SHALL AT MINIMUM CONTACT J.U.L.I.E. AT 1-800-892-0123 FOR UTILITY LOCATING.
2. UNLESS MODIFIED BY THE PROJECT SPECIFICATIONS, ALL WORK SHALL BE DONE IN ACCORDANCE WITH THE "STANDARD SPECIFICATIONS FOR ROAD AND BRIDGE CONSTRUCTION", ADOPTED BY THE ILLINOIS DEPARTMENT OF TRANSPORTATION ON JAN. 1, 2012; THE LATEST ADDITION OF THE "MANUAL ON UNIFORM TRAFFIC CONTROL DEVICES FOR STREETS AND HIGHWAYS"; AND THE "SUPPLEMENTAL SPECIFICATIONS AND RECURRING SPECIAL PROVISIONS" ADOPTED JAN. 1, 2013.
3. WHERE CLEARING OR PRUNING IS REQUIRED FOR PROPOSED IMPROVEMENTS, IT SHALL BE IN ACCORDANCE WITH SECTION 201 OF THE STANDARD SPECIFICATIONS EXCEPT THAT ANY CLEARING OR PRUNING REQUIRED SHALL BE INCLUDED IN THE UNIT PRICE FOR THE PROPOSED ITEM REQUIRING THE CLEARING OR PRUNING.
4. THE CONTRACTOR SHALL TAKE REASONABLE PRECAUTIONS TO PROTECT PUBLIC AND PRIVATE PROPERTY. IF AT ANY TIME, HE/SHE DAMAGES OR DESTROYS PUBLIC OR PRIVATE PROPERTY, THE CONTRACTOR SHALL, AT HIS/HER OWN EXPENSE, RESTORE SUCH PROPERTY TO A CONDITION EQUAL TO THAT EXISTING BEFORE SUCH DAMAGE. PUBLIC ROADWAYS, PRIVATE ENTRANCES AND EMPLOYEE ENTRANCES SHALL REMAIN ACCESSIBLE AND FREE OF CONSTRUCTION DEBRIS. ANY MATERIAL TO BE STAGED OR STOCKPILED SHALL BE COORDINATED WITH THE OWNER'S REPRESENTATIVE.
5. WHERE SECTION OR SUB-SECTION CORNERS OR PROPERTY MARKERS ARE ENCOUNTERED THE ENGINEER SHALL BE NOTIFIED BEFORE SUCH MARKERS ARE REMOVED. THE CONTRACTOR SHALL PROTECT AND PRESERVE ALL PROPERTY MARKERS UNTIL AN AUTHORIZED SURVEYOR HAS WITNESSED OR REFERENCED THEIR LOCATION.
6. PLAN DIMENSIONS AND DETAILS RELATIVE TO EXISTING PLANS ARE SUBJECT TO NOMINAL CONSTRUCTION VARIATIONS. THE CONTRACTOR SHALL FIELD VERIFY EXISTING DIMENSIONS AND DETAILS AFFECTING NEW CONSTRUCTION AND MAKE NECESSARY APPROVED ADJUSTMENTS PRIOR TO CONSTRUCTION OR ORDERING OF MATERIALS. SUCH VARIATIONS SHALL NOT BE CAUSE FOR ADDITIONAL COMPENSATION FOR A CHANGE IN SCOPE OF WORK; HOWEVER, THE CONTRACTOR WILL BE PAID FOR THE QUANTITY ACTUALLY FURNISHED AT THE UNIT PRICE BID FOR THE WORK.
7. GRADING SHALL BE DONE BY HAND AROUND LIGHT POLES, UTILITY POLES, SIGN POSTS, SHRUBS, TREES OR OTHER NATURAL OR MAN-MADE OBJECTS WHERE SHALLOW FILLS OR CUTS ARE ADJACENT TO THE ITEMS. IT IS THE INTENT THAT THE LIMITS OF CONSTRUCTION BE SUCH AS TO PRESERVE IN THE ORIGINAL STATE AS MUCH AREA AS POSSIBLE. THE DECISION AS TO ITEMS TO REMAIN IN PLACE SHALL BE DIRECTED BY THE ENGINEER. THIS WORK WILL NOT BE PAID FOR SEPARATELY BUT SHALL BE INCLUDED AS PART OF THIS PROJECT AND NO ADDITIONAL COMPENSATION WILL BE ALLOWED.
8. THE CONTRACTOR SHALL NOTIFY THE ENGINEER AND THE ILLINOIS DEPARTMENT OF NATURAL RESOURCES MERMET LAKE STATE FISH AND WILDLIFE AREA SITE SUPERINTENDENT, CHRIS MCGINNESS AT (618) 524-5577 AT LEAST TWO WEEKS IN ADVANCE OF MOVING EQUIPMENT, MATERIALS, OR WORK FORCES TO THE SITE.
9. ALL TREES SHALL BE PROTECTED BY THE CONTRACTOR FROM DAMAGE DUE TO HIS/HER OPERATIONS.
10. EXCESS EXCAVATION AND OR AGGREGATE MAY BE DISPOSED OF WITHIN PARK BOUNDARIES AND A LOCATION APPROVED BY THE ENGINEER. THE CONTRACTOR SHALL SPECIFY TO THE ENGINEER, IN WRITING, HOW THE LANDSCAPE RESTORATION WILL BE ACCOMPLISHED. PLACEMENT OF FILL IN SUCH AREAS SHALL NOT COMMENCE UNTIL THE CONTRACTOR'S LANDSCAPE RESTORATION PLAN IS APPROVED BY THE ENGINEER AS STATED IN ARTICLE 202.03 OF THE STANDARD SPECIFICATIONS.
11. SEEDING SHALL BE DONE ON ALL AREAS THAT ARE DISTURBED BY CONSTRUCTION OPERATIONS AS DIRECTED BY THE ENGINEER. THIS WORK WILL NOT BE PAID FOR SEPARATELY BUT SHALL BE INCLUDED AS PART OF THIS PROJECT AND NO ADDITIONAL COMPENSATION WILL BE ALLOWED.
12. WHERE PROPOSED CONSTRUCTION ABUTS EXISTING APPURTENANCES, A SAW CUT SHALL BE MADE TO ACHIEVE A NEAT CONSTRUCTION JOINT. SAW CUTTING WILL NOT BE PAID FOR SEPARATELY, BUT SHALL BE INCLUDED IN THE UNIT PRICE FOR THE ITEM BEING CONSTRUCTED.
13. FOR STABILIZATION, ALL TYPE III BARRICADES SHALL REQUIRE A MINIMUM OF FOUR SAND BAGS PER BARRICADE.
14. THE FOLLOWING RATES OF APPLICATION HAVE BEEN USED IN CALCULATING PLAN QUANTITIES:

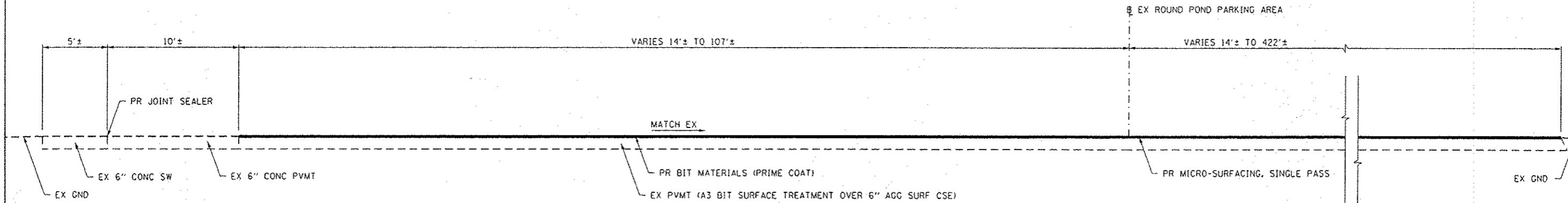
BITUMINOUS MATERIALS:
 PRIME COAT-ON PAVEMENT: 0.10 GAL/SY



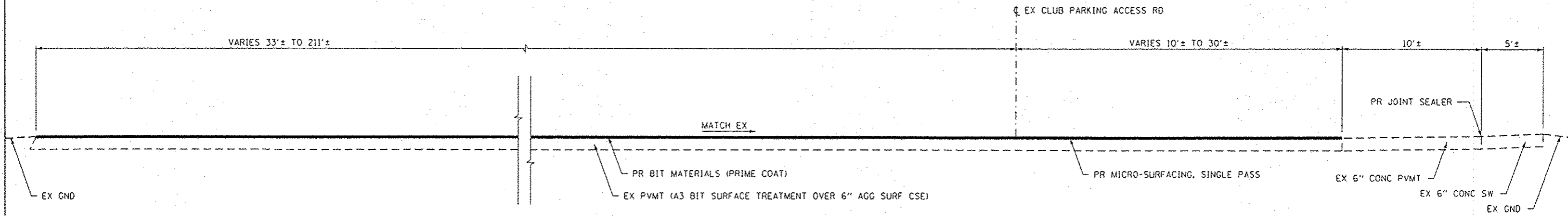
ROADWAY - TYPICAL #2

MAINTENANCE SHED ACCESS ROAD: STA 200+26.20 TO STA 204+19.77

FILE NAME * L:\1007\11066-10-11\Drawings\CA00_Sheets\003	USER NAME * Jack Blakemore SEN_NOTES.dgn	DESIGNED - JWB	REVISED -	STATE OF ILLINOIS DEPARTMENT OF TRANSPORTATION	TYPICAL SECTIONS AND GENERAL NOTES MERMET LAKE STATE FISH AND WILDLIFE AREA			F.A. RTE.	SECTION	COUNTY	TOTAL SHEETS	SHEET NO.
PLOT SCALE * 40.0000 / in.	CHECKED - SPH	REVISOR - AJK	REVISIONS -		SCALE: NTS	SHEET NO. 1 OF 2 SHEETS	STA. N/A TO STA. N/A	PARK ROADS	MASSAC	16	3	
PLOT DATE * 12/21/2012	DATE - 12/21/2012	REVISOR - SPH	REVISIONS -		CONTRACT NO. 46253							
ILLINOIS FED. AID PROJECT												



ROADWAY - TYPICAL #3
 ROUND POND PARKING AREA: STA 400+89.72 TO STA 403+56.25



ROADWAY - TYPICAL #4
 CLUB PARKING ACCESS ROAD: STA 500+00.00 TO STA 502+44.64

FILE NAME * L:\1007\11866-10-11\Draw-CADD_Sheets\003_GEN_NOTES.dgn	USER NAME * Jack Blahamora	DESIGNED - JWB	REVISED -	STATE OF ILLINOIS DEPARTMENT OF TRANSPORTATION	TYPICAL SECTIONS AND GENERAL NOTES MERMET LAKE STATE FISH AND WILDLIFE AREA			F.A. RTE.	SECTION PARK ROADS	COUNTY MASSAC	TOTAL SHEETS 16	SHEET NO. 4
	PLOT SCALE * 49.0000' / in.	CHECKED - SPH	REVISED -		SCALE: NTS	SHEET NO. 2 OF 2 SHEETS	STA. N/A TO STA. N/A	CONTRACT NO. 46253				
	PLOT DATE * 12/21/2012	DATE - 12/21/2012	REVISED -		ILLINOIS FED. AID PROJECT							

PAVEMENT RECONSTRUCTION SCHEDULE				
LOCATION	GRADING AND SHAPING DITCHES (SPECIAL) (FOOT)	TEMPORARY DITCH CHECKS (FOOT)	GEOTECHNICAL FABRIC FOR GROUND STABILIZATION (SQ YD)	AGGREGATE BASE COURSE - TYPE A 12" (SQ YD)
MAINTENANCE SHED ACCESS ROAD:				
STA 200+85.23, 30.95' RT TO STA 201+81.75, 56.60' RT	100	10	90	90
STA 202+13.07, 61.42' RT TO STA 202+20.07, 161.17' RT	100	10	118	118
TOTALS	200	20	208	208

GATE SCHEDULE		
LOCATION	REMOVE EXISTING GATE (EACH)	TUBULAR STEEL GATE (EACH)
EAST ROAD:		
STA 8+29.34	1	1
STA 20+89.69 RT	1	1
TOTALS	2	2

KIOSK SCHEDULE				
LOCATION	SOLAR LIGHTING UNIT COMPLETE (EACH)	INFORMATION KIOSK COMPLETE (EACH)	PORTLAND CEMENT CONCRETE SIDEWALK 6 INCH (SQ FT)	REMOVE EXISTING SIGN COMPLETE (EACH)
EAST ROAD:				
STA 20+30.68, 39.86' RT	1	1	70.6	
ROUND POND PARKING AREA:				
STA 400+73.66, 95.99' LT				1
STA 401+90.13, 106.69' LT		1	70.6	
TOTALS	1	2	141	1

PAVEMENT PREVENTIVE MAINTENANCE SCHEDULE						
LOCATION	PREPARATION OF BASE (SQ YD)	BITUMINOUS MATERIALS (PRIME COAT) (GALLON)	FIBER-MODIFIED ASPHALT CRACK SEALING (FOOT)	MICRO-SURFACING RUT FILLING (FOOT)	MICRO-SURFACING SINGLE PASS, TYPE II, MIXTURE C (SQ YD)	CAPE SEAL (SQ YD)
EAST ROAD:						
STA 5+09.48 TO STA 100+62.85		2,423	335	625	24,234	
MAINTENANCE SHED ACCESS ROAD:						
STA 202+54.80 TO STA 213+26.95		258	35	65	2,583	
SPECIAL EVENTS PARKING AREA:						
STA 200+26.20 LT TO STA 201+79.95 LT	3,426					3,426
MAINTENANCE SHED PARKING AREA:						
STA 200+68.58 RT TO STA 204+19.77 RT						3,583
QUARTERS ACCESS ROAD:						
STA 302+60.68 TO 307+51.66		111	15	30	1,114	
ROUND POND PARKING AREA:						
STA 400+89.72 TO STA 403+56.25		520			5,200	
CLUB PARKING ACCESS ROAD:						
STA 502+44.64 TO STA 506+33.03		99	15	30	989	
CLUB PARKING AREA:						
STA 500+00.00 TO STA 502+44.64		351			3,514	
TOTALS	3,426	3,763	400	750	37,633	7,008

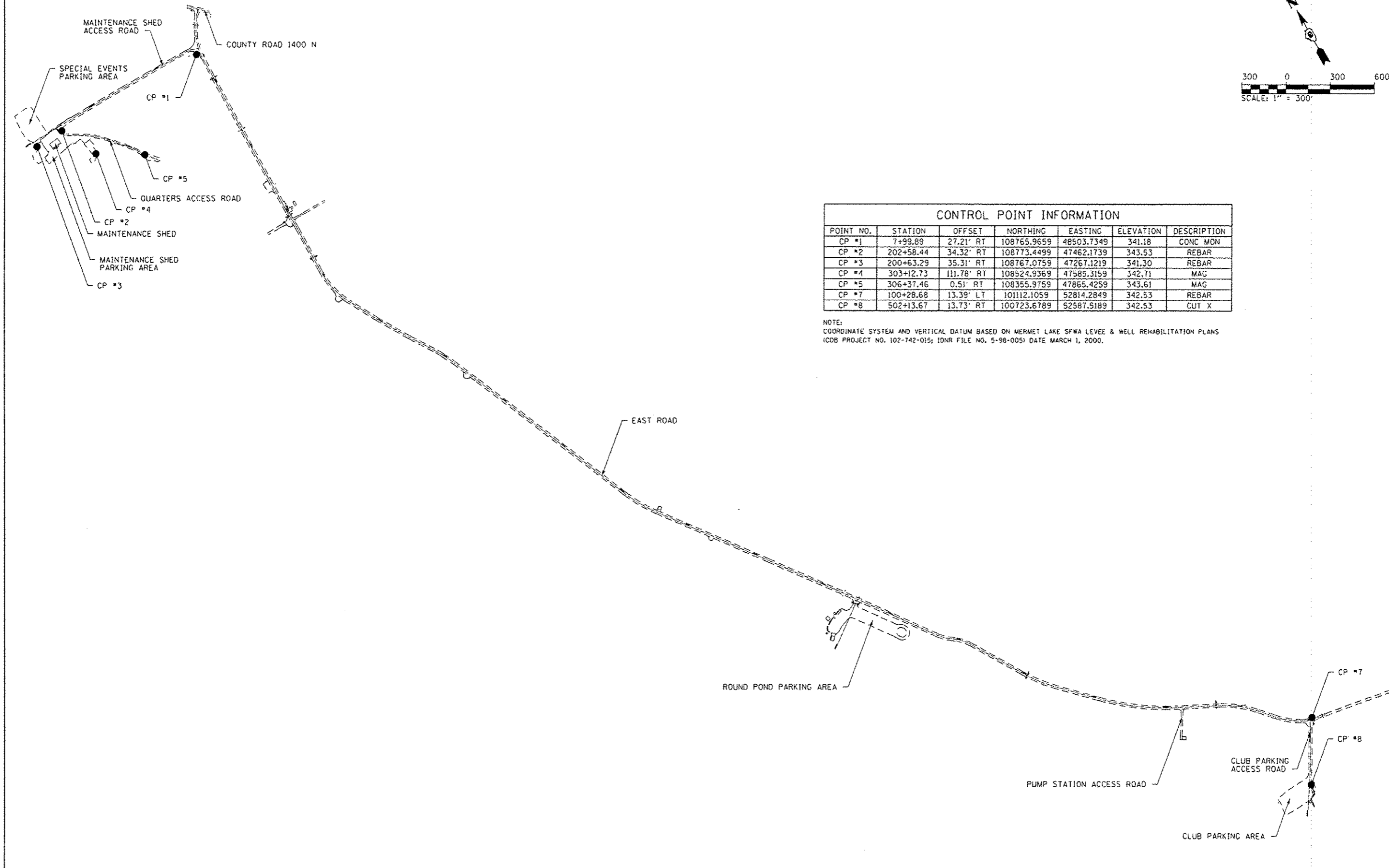
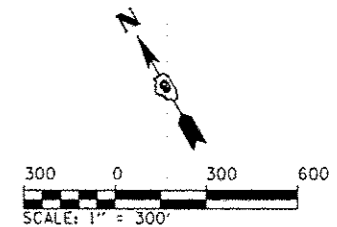
PAVEMENT MARKING AND SIGNING SCHEDULE					
LOCATION	PAINT PAVEMENT MARKING - LETTERS AND SYMBOLS (SQ FT)	PAINT PAVEMENT MARKING - LINE 4" (FOOT)	SIGN PANEL - TYPE 1 (SQ FT)	WOOD SIGN SUPPORT (FOOT)	REMOVING AND RESETTING STREET SIGNS (EACH)
EAST ROAD:					
STA 5+25.00 RT (STOP SIGN)			5.2	14.5	
STA 6+05.00 RT (SPEED LIMIT SIGN & WILDLIFE VIEWING SIGN)			9.0	16.5	
STA 6+05.00 LT (LOVE THE LAND OF LINCOLN SIGN)				15.0	1
STA 8+15.00 LT (ARCHERY DEER HUNTING & NO SHOTGUN DEER HUNTING SIGNS)				15.0	2
STA 8+29.34 CL (WILDLIFE MANAGEMENT AREA, AUTHORIZED VEHICLES ONLY & NOTICE SIGNS)					3
STA 17+75.00 RT (TWO-WAY TRAFFIC SIGN)			9.0	16.5	
STA 20+08.00 LT (RESERVED PARKING SIGN & FINE SIGN)			2.0	14.0	
STA 20+17.38 LT (DISABLED PARKING STALL)		114			
STA 21+00.00 LT (AUTHORIZED VEHICLES ONLY SIGN & NO PARKING SIGN)			4.0	15.0	1
STA 21+25.00 RT (NO PARKING SIGN & BOAT RAMP SIGN)			8.0	16.0	
STA 66+75.00 RT & LT (SPEED LIMIT SIGN)			10.0	29.0	
STA 95+50 LT (SPEED LIMIT SIGN)			5.0	14.5	
STA 101+00.00 RT & LT (DO NOT ENTER SIGN)			12.5	29.0	
MAINTENANCE SHED ACCESS ROAD:					
STA 213+10.00 RT (STOP SIGN)			5.2	14.5	
SPECIAL EVENTS PARKING AREA:					
STA 201+00.00 LT (PARKING SIGN)				15.0	1
MAINTENANCE SHED PARKING AREA:					
STA 201+36.63 RT TO STA 201+38.06 RT (DISABLED PARKING STALL)		114			
STA 201+45.18 RT (RESERVED PARKING SIGN & FINE SIGN MOUNTED ON BUILDING)			2.0		
ROUND POND PARKING AREA:					
STA 400+80.00 LT (ROAD ENDS IN WATER SIGN)			9.0	16.5	
STA 401+50.00 LT (NO PARKING SIGN)			4.0	14.0	
STA 401+65.00 RT (NO PARKING SIGN)			4.0	14.0	
STA 401+89.31 LT TO STA 402+55.99 LT (DISABLED PARKING STALLS)	9.2	10			
STA 402+00.00 LT (RESERVED PARKING SIGN & FINE SIGN)			2.0	14.0	
STA 402+40.00 LT (RESERVED PARKING SIGN & FINE SIGN)			2.0	14.0	
STA 403+45.00 RT (STOP SIGN)			5.2	14.5	
CLUB PARKING ACCESS ROAD:					
STA 506+10.00 RT (STOP SIGN)			5.2	14.5	
CLUB PARKING AREA:					
STA 500+62.50 LT (ROAD ENDS IN WATER SIGN)			9.0	16.5	
STA 501+70.00 RT (RESERVED PARKING SIGN & FINE SIGN)			2.0	14.0	
STA 501+49.20 RT TO STA 502+30.31 (DISABLED PARKING STALLS)	9.2	10			
STA 502+20.00 RT (RESERVED PARKING SIGN & FINE SIGN)			2.0	14.0	
TOTALS	18	248	116	371	8

PCC PAVEMENT AND SIDEWALK JOINT SEALER SCHEDULE	
LOCATION	JOINT SEALER (FOOT)
EAST ROAD:	
STA 20+09.27 LT TO STA 20+35.36 LT	30
ROUND POND PARKING AREA:	
STA 401+92.10 LT TO STA 402+55.99 LT	110
CLUB PARKING AREA:	
STA 501+08.67 RT TO STA 502+39.24 RT	200
TOTAL	340

FILE NAME * L:\DOT\11856-10-11\Draw\CADD_Sheets\005	USER NAME * Jack Blakemore SCHEDULES.L.dgn	DESIGNED - JWB DRAWN - AJK	REVISED - REVISED -
PLOT SCALE * 1/8"=1'-0"	CHECKED - SPH	REVISED - REVISED -	
PLOT DATE * 12/21/2012	DATE - 12/21/2012	REVISED -	

STATE OF ILLINOIS
DEPARTMENT OF TRANSPORTATION

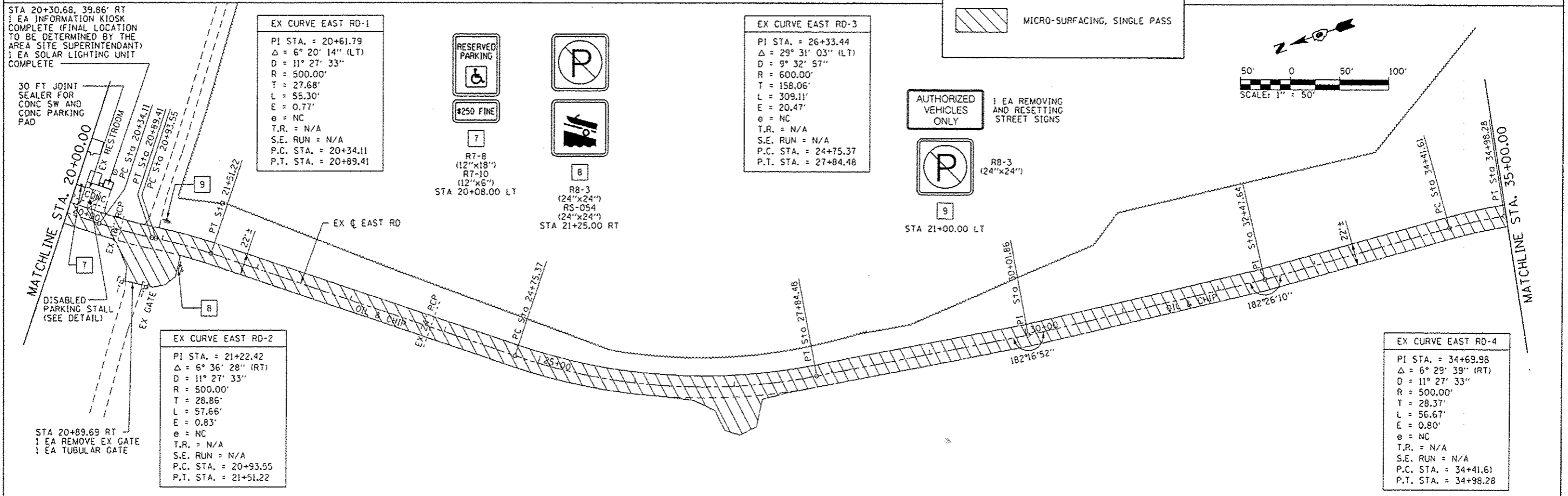
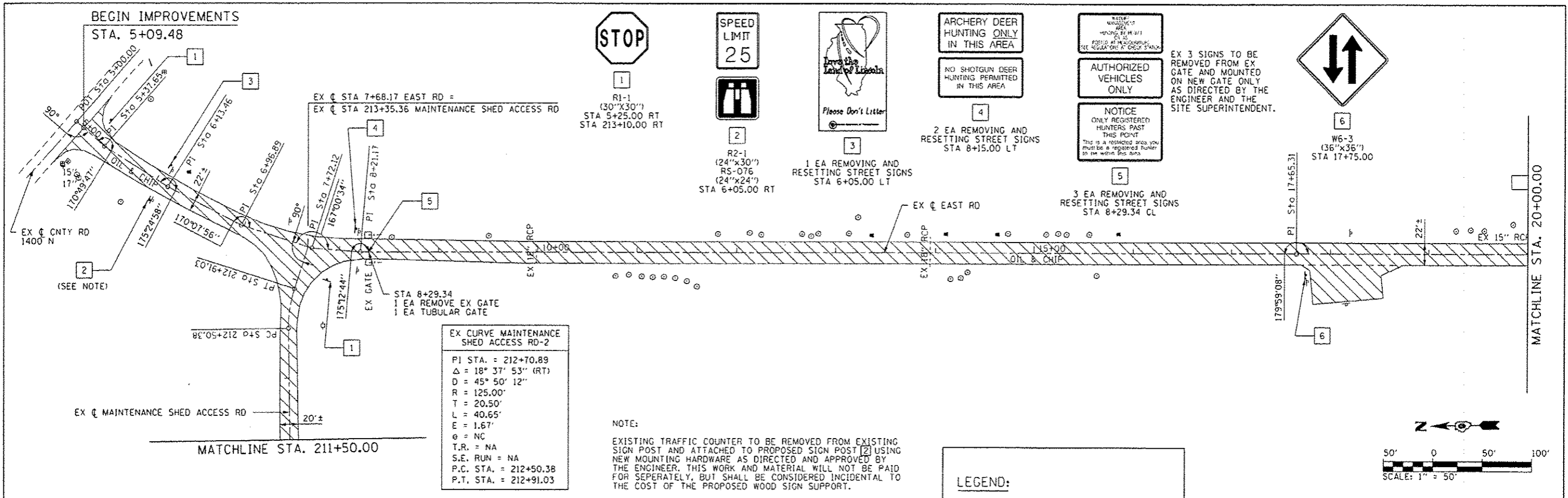
SUMMARY OF QUANTITIES		F.A. RTE.	SECTION	COUNTY	TOTAL SHEETS	SHEET NO.
MERMET LAKE STATE FISH AND WILDLIFE AREA			PARK ROADS	MASSAC	16	5
SCALE: NTS	SHEET NO. 1 OF 1 SHEETS	STA. N/A TO STA. N/A	ILLINOIS FED. AID PROJECT CONTRACT NO. 46253			



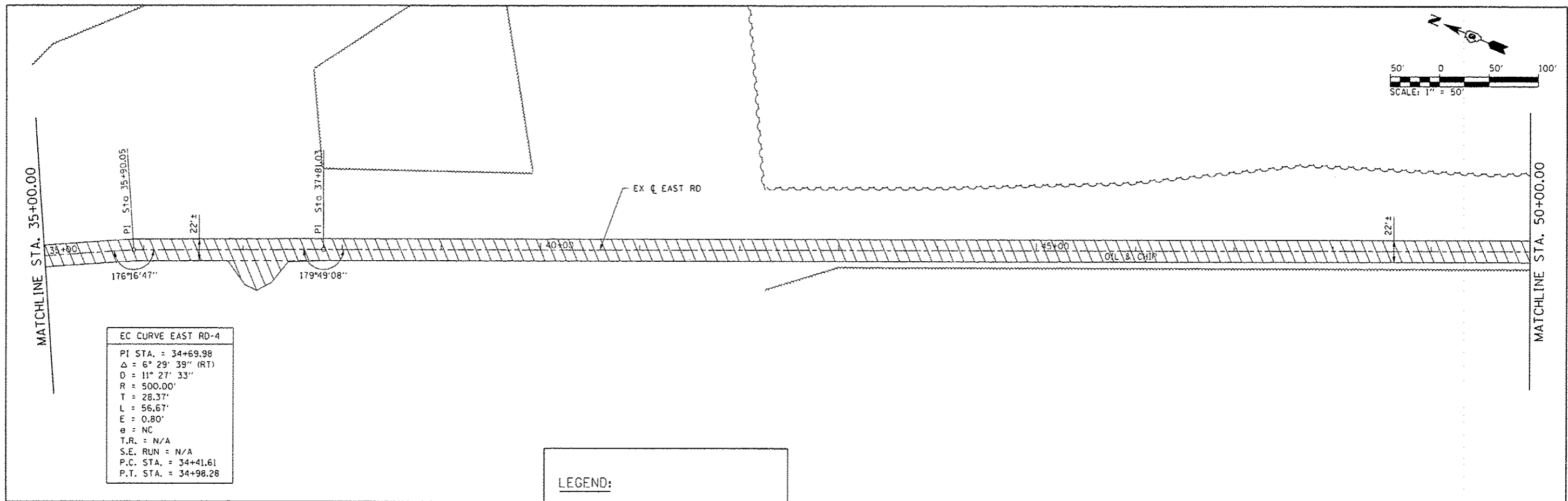
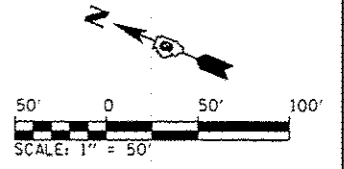
CONTROL POINT INFORMATION						
POINT NO.	STATION	OFFSET	NORTHING	EASTING	ELEVATION	DESCRIPTION
CP #1	7+99.89	27.21' RT	108765.9659	48503.7349	341.18	CONC MON
CP #2	202+58.44	34.32' RT	108773.4499	47462.1739	343.53	REBAR
CP #3	200+63.29	35.31' RT	108767.0759	47267.1219	341.30	REBAR
CP #4	303+12.73	111.78' RT	108524.9369	47585.3159	342.71	MAG
CP #5	306+37.46	0.51' RT	108355.9759	47865.4259	343.61	MAG
CP #7	100+28.68	13.39' LT	101112.1059	52814.2849	342.53	REBAR
CP #8	502+13.67	13.73' RT	100723.6789	52587.5189	342.53	CUT X

NOTE:
 COORDINATE SYSTEM AND VERTICAL DATUM BASED ON MERMET LAKE SFWA LEVEE & WELL REHABILITATION PLANS
 (CDB PROJECT NO. 102-742-015; IDNR FILE NO. 5-98-005) DATE MARCH 1, 2000.

FILE NAME * L:\IDOT\11066-10-11\Draw\CADD_Sheets\096	USER NAME * Jack Blahemore SITE PLAN .dgn	DESIGNED - JWB DRAWN - AJK	REVISED - REVISED -	STATE OF ILLINOIS DEPARTMENT OF TRANSPORTATION	SITE PLAN AND CONTROL SHEET MERMET LAKE STATE FISH AND WILDLIFE AREA	F.A. RTE.	SECTION PARK ROADS	COUNTY MASSAC	TOTAL SHEETS 16	SHEET NO. 6	
PLOT SCALE = 600.0000' / in.		CHECKED - SPH	REVISED -			SCALE: 1"=300'	SHEET NO. 1 OF 1 SHEETS	STA. N/A TO STA. N/A	CONTRACT NO. 46253		
PLOT DATE = 12/21/2012		DATE = 12/21/2012	REVISED -			ILLINOIS FED. AID PROJECT					

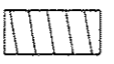


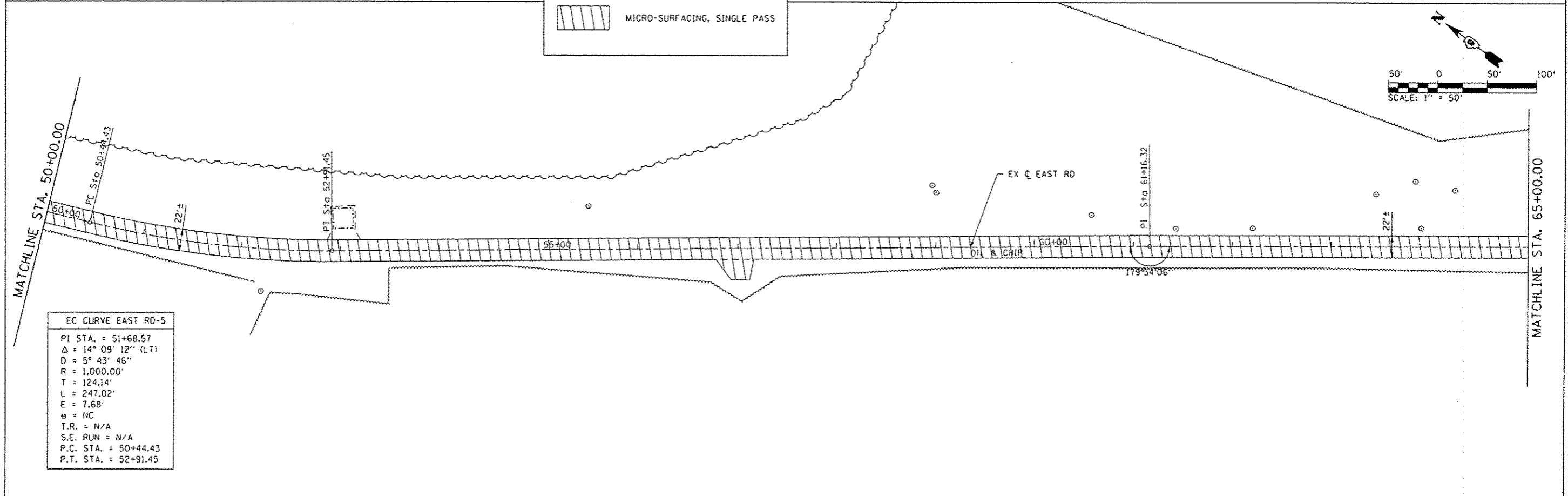
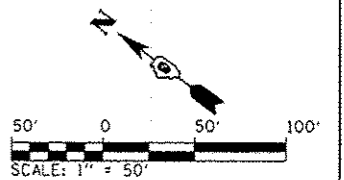
FILE NAME *	USER NAME * Jack Blahonore	DESIGNED - JWB	REVISED -	STATE OF ILLINOIS DEPARTMENT OF TRANSPORTATION	ROADWAY PLAN MERMET LAKE STATE FISH AND WILDLIFE AREA	F.A. RTE.	SECTION	COUNTY	TOTAL SHEETS	SHEET NO.	
L:\DDT\11066-10-11\DDT\CAD\Drawings\007	PLAN 1.dgn	DRAWN - AJK	REVISED -					MASSAC	16	7	
PLOT SCALE = 1/8" = 1' @ 11"		CHECKED - SPH	REVISED -			SCALE: 1" = 50'	SHEET NO. 1 OF 5 SHEETS				
PLOT DATE = 12/21/2012		DATE - 12/21/2012	REVISED -			STA. 5+00.00 TO STA. 35+00.00					CONTRACT NO. 46253



EC CURVE EAST RD-4	
PI STA.	= 34+69.98
Δ	= 6° 29' 39" (RT)
D	= 11° 27' 33"
R	= 500.00'
T	= 28.37'
L	= 56.67'
E	= 0.80'
θ	= NC
T.R.	= N/A
S.E. RUN	= N/A
P.C. STA.	= 34+41.61
P.T. STA.	= 34+98.28

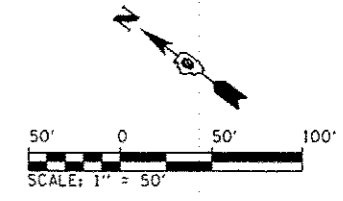
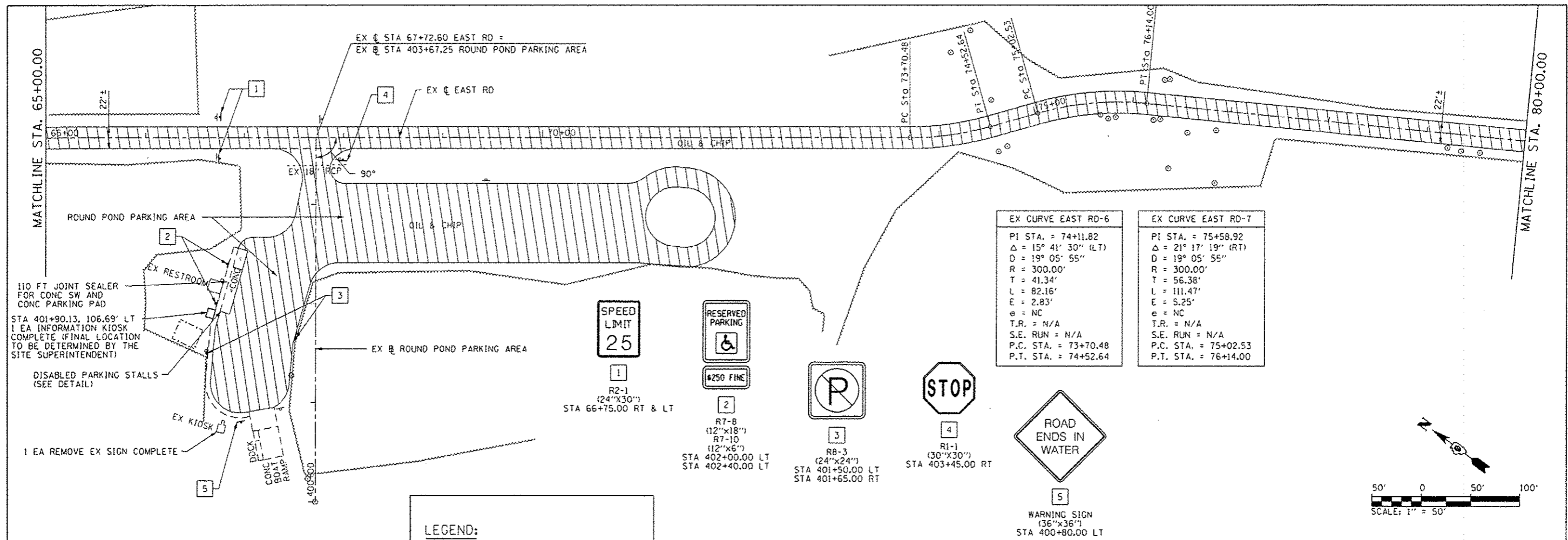
LEGEND:

 MICRO-SURFACING, SINGLE PASS



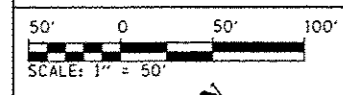
EC CURVE EAST RD-5	
PI STA.	= 51+68.57
Δ	= 14° 09' 12" (LT)
D	= 5° 43' 46"
R	= 1,000.00'
T	= 124.14'
L	= 247.02'
E	= 7.68'
θ	= NC
T.R.	= N/A
S.E. RUN	= N/A
P.C. STA.	= 50+44.43
P.T. STA.	= 52+91.45

FILE NAME * L:\IDOT\11866-10-11\Drawings\CADD_Sheets\808	USER NAME * Jack Blakemore PLAN 2.dgn	DESIGNED - JWb	REVISED -	STATE OF ILLINOIS DEPARTMENT OF TRANSPORTATION	ROADWAY PLAN MERMET LAKE STATE FISH AND WILDLIFE AREA	F.A. RTE.	SECTION	COUNTY	TOTAL SHEETS	SHEET NO.	
PLOT SCALE * 100.0000 1/2 in.	CHECKED - SPH	REVISED -									
PLOT DATE * 12/21/2012	DATE - 12/21/2012	REVISED -									
			SCALE: 1"=50'			SHEET NO. 2 OF 5 SHEETS	STA. 35+00.00 TO STA. 65+00.00	CONTRACT NO. 46253			
<small>ILLINOIS FED. AID PROJECT</small>											



LEGEND:

MICRO-SURFACING, SINGLE PASS



EX CURVE EAST RD-9

PI STA. = 88+28.61
 $\Delta = 18^\circ 05' 48''$ (LT)
 D = 3' 22' 13"
 R = 1,700.00'
 T = 270.73'
 L = 536.94'
 E = 21.42'
 e = NC
 T.R. = N/A
 S.E. RUN = N/A
 P.C. STA. = 85+57.88
 P.T. STA. = 90+94.83

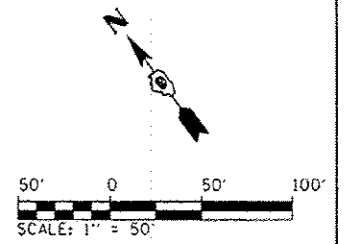
EX CURVE EAST RD-8

PI STA. = 81+27.13
 $\Delta = 14^\circ 06' 13''$ (LT)
 D = 5' 43' 46"
 R = 1,000.00'
 T = 123.70'
 L = 246.16'
 E = 7.62'
 e = NC
 T.R. = N/A
 S.E. RUN = N/A
 P.C. STA. = 80+03.43
 P.T. STA. = 82+49.58

EX CURVE EAST RD-10

PI STA. = 95+11.48
 $\Delta = 21^\circ 07' 02''$ (RT)
 D = 8' 11' 06"
 R = 700.00'
 T = 130.48'
 L = 257.99'
 E = 12.06'
 e = NC
 T.R. = N/A
 S.E. RUN = N/A
 P.C. STA. = 93+81.00
 P.T. STA. = 96+39.00

FILE NAME * L:\1001\11066-18-11\VD-eu\CAD\Drawings\1001	USER NAME * Jack Blakenore PLAN 3.dgn	DESIGNED - JWB	REVISIONS -	STATE OF ILLINOIS DEPARTMENT OF TRANSPORTATION	ROADWAY PLAN MERMET LAKE STATE FISH AND WILDLIFE AREA		F.A. RTE.	SECTION	COUNTY	TOTAL SHEETS	SHEET NO.	
PLOT SCALE * 1/8"=0'00" / 1"			CHECKED - SPH		SCALE: 1"=50'	SHEET NO. 3 OF 5 SHEETS	STA. 65+00.00 TO STA. 95+00.00	PARK ROADS	MASSAC	16	9	
PLOT DATE * 12/21/2012			DATE - 12/21/2012						CONTRACT NO. 46253		ILLINOIS FISH AND WILDLIFE PROJECT	



EX CURVE EAST RD-11
 PI STA. = 98+63.30
 $\Delta = 18^\circ 53' 32''$ (LT)
 $D = 9^\circ 32' 57''$
 $R = 600.00'$
 $T = 99.82'$
 $L = 197.84'$
 $E = 8.25'$
 $e = NC$
 $T.R. = N/A$
 $S.E. RUN = N/A$
 $P.C. STA. = 97+63.47$
 $P.T. STA. = 99+61.31$

EX CURVE EAST RD-12
 PI STA. = 99+95.12
 $\Delta = 19^\circ 11' 26''$ (LT)
 $D = 28^\circ 38' 52''$
 $R = 200.00'$
 $T = 33.81'$
 $L = 66.99'$
 $E = 2.84'$
 $e = NC$
 $T.R. = N/A$
 $S.E. RUN = N/A$
 $P.C. STA. = 99+61.31$
 $P.T. STA. = 100+28.30$

EX CURVE EAST RD-10
 PI STA. = 95+11.48
 $\Delta = 21^\circ 07' 02''$ (RT)
 $D = 8^\circ 11' 06''$
 $R = 700.00'$
 $T = 130.48'$
 $L = 257.99'$
 $E = 12.06'$
 $e = NC$
 $T.R. = N/A$
 $S.E. RUN = N/A$
 $P.C. STA. = 93+81.00$
 $P.T. STA. = 96+39.00$

EX CURVE CLUB PARKING ACCESS RD-1
 PI STA. = 504+59.31
 $\Delta = 5^\circ 40' 03''$ (LT)
 $D = 1^\circ 31' 40''$
 $R = 3,750.00'$
 $T = 185.62'$
 $L = 370.94'$
 $E = 4.59'$
 $e = NC$
 $T.R. = N/A$
 $S.E. RUN = N/A$
 $P.C. STA. = 502+73.69$
 $P.T. STA. = 506+44.63$

MATCHLINE STA. 95+00.00

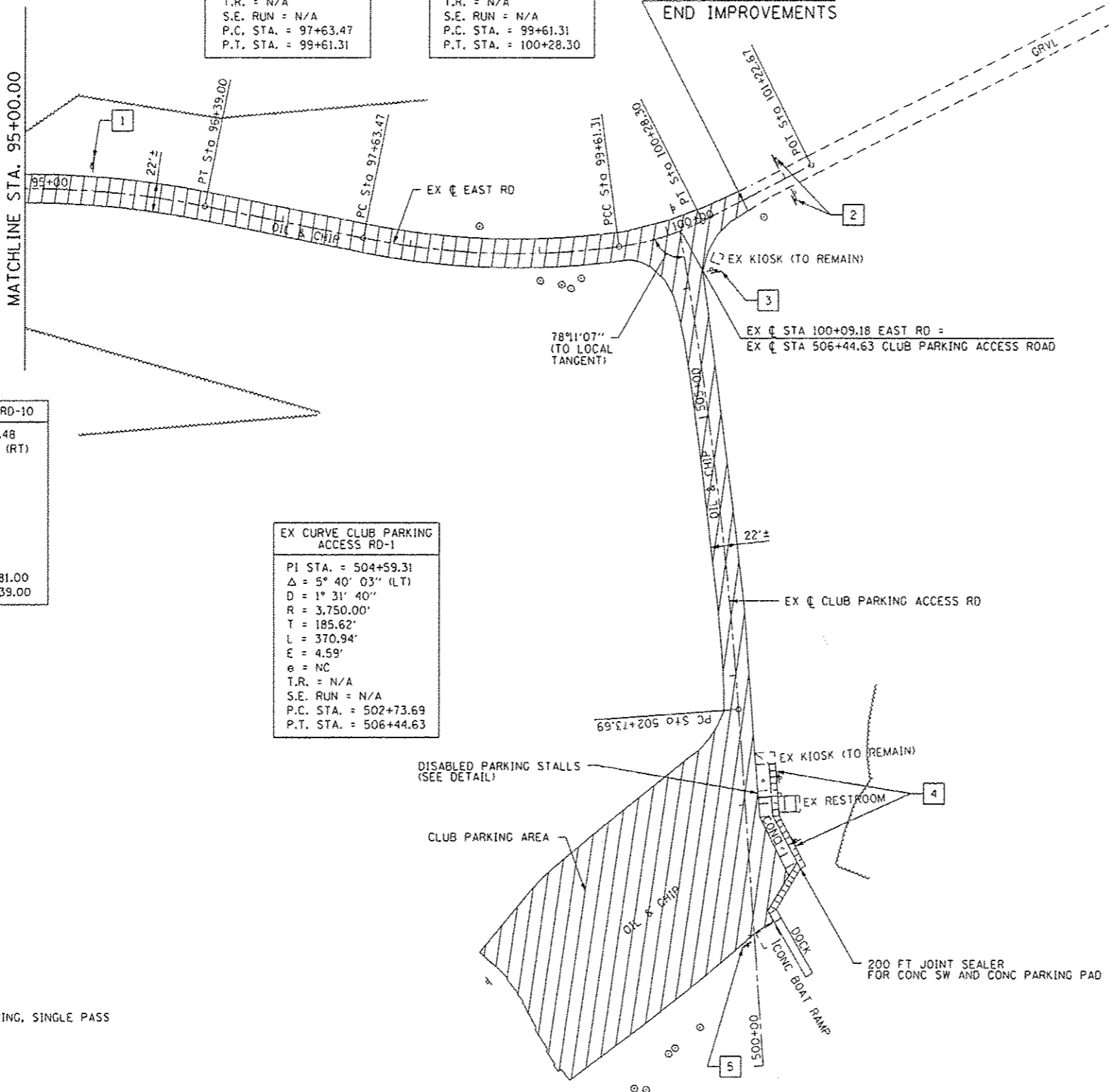
STA 100+62.85
 END IMPROVEMENTS

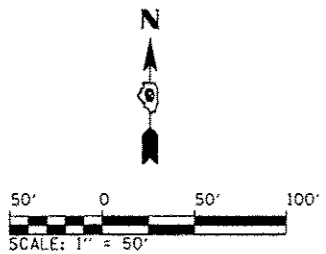
- 1 SPEED LIMIT 25
R2-1 (24"x30") STA 95+50.00 LT
- 2 DO NOT ENTER
R5-1 (30"x30") STA 101+00.00 RT & LT
- 3 STOP
R1-1 (30"x30") STA 506+10.00
- 4 RESERVED PARKING
#250 FINE
R7-8 (12"x18")
R7-10 (12"x6")
STA 501+70.00 RT
STA 502+20.00 RT
- 5 ROAD ENDS IN WATER
WARNING SIGN (36"x36") STA 500+92.50 LT

LEGEND:

MICRO-SURFACING, SINGLE PASS

FILE NAME *	USER NAME * Jack Blakemore	DESIGNED - JWB	REVISED -	STATE OF ILLINOIS DEPARTMENT OF TRANSPORTATION	ROADWAY PLAN MERMET LAKE STATE FISH AND WILDLIFE AREA	F.A. RTE.	SECTION	COUNTY	TOTAL SHEETS	SHEET NO.	
L:\1001\11866-18-11\10-CAOD_Sheets\010	PLAN 4.dgn	DRAWN - AJK	REVISED -								
	PLOT SCALE = 1/8"=1'-0"	CHECKED - SPH	REVISED -								
	PLOT DATE = 12/21/2012	DATE = 12/21/2012	REVISED -								
					SCALE: 1"=50'	SHEET NO. 4 OF 5 SHEETS		STA. 95+00.00 TO STA. 100+62.85		ILLINOIS FED. AID PROJECT	





EX CURVE QUARTERS ACCESS RD-1

PI STA. = 300+58.05
$\Delta = 60^\circ 16' 15''$ (LT)
D = 57' 17' 45"
R = 100.00'
T = 58.05'
L = 105.19'
E = 15.63'
e = NC
T.R. = N/A
S.E. RUN = N/A
P.C. STA. = 300+00.00
P.T. STA. = 301+05.19

EX CURVE QUARTERS ACCESS RD-2

PI STA. = 301+64.23
$\Delta = 4^\circ 34' 07''$ (RT)
D = 3' 52' 17"
R = 1,480.00'
T = 59.04'
L = 118.01'
E = 1.18'
e = NC
T.R. = N/A
S.E. RUN = N/A
P.C. STA. = 301+05.19
P.T. STA. = 302+23.20

EX CURVE QUARTERS ACCESS RD-3

PI STA. = 302+65.32
$\Delta = 9^\circ 37' 44''$ (RT)
D = 11' 27' 33"
R = 500.00'
T = 42.11'
L = 84.03'
E = 1.77'
e = NC
T.R. = N/A
S.E. RUN = N/A
P.C. STA. = 302+23.20
P.T. STA. = 303+07.23

EX CURVE QUARTERS ACCESS RD-4

PI STA. = 303+58.34
$\Delta = 7^\circ 05' 23''$ (RT)
D = 6' 56' 42"
R = 825.00'
T = 51.11'
L = 102.09'
E = 1.58'
e = NC
T.R. = N/A
S.E. RUN = N/A
P.C. STA. = 303+07.23
P.T. STA. = 304+09.32

EX CURVE MAINTENANCE SHED ACCESS RD-1

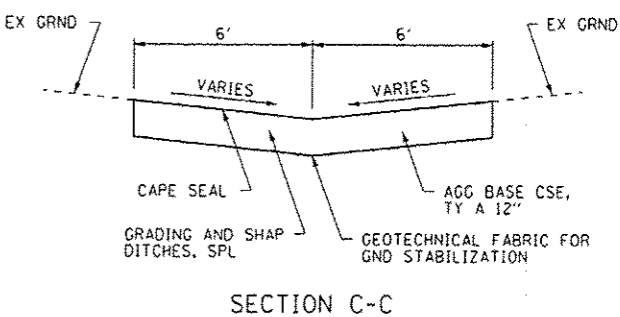
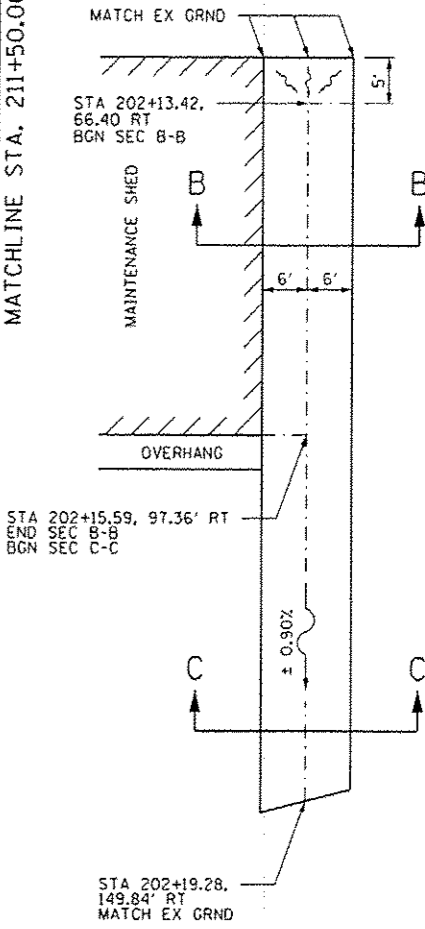
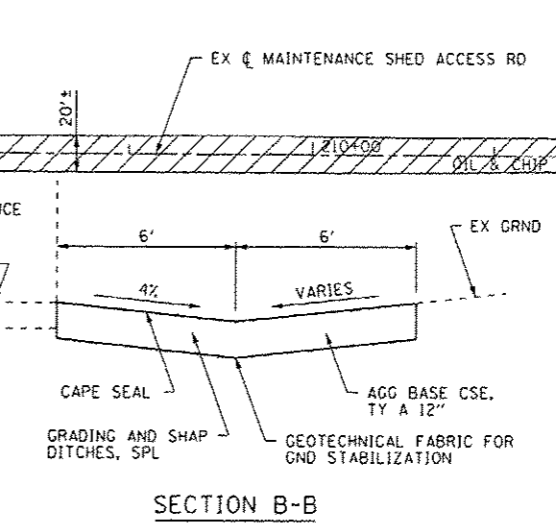
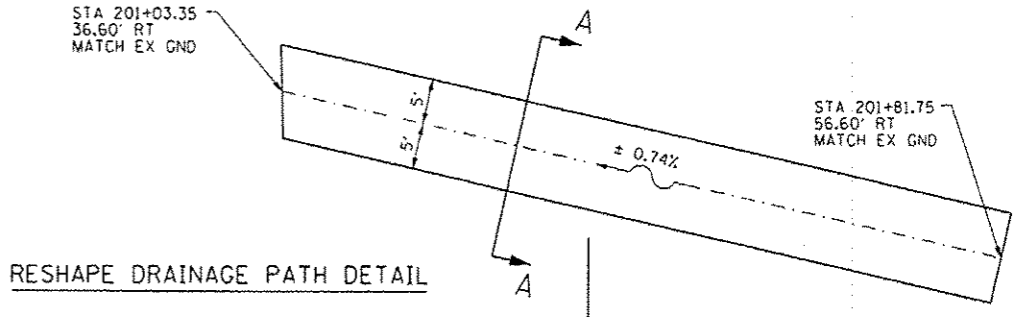
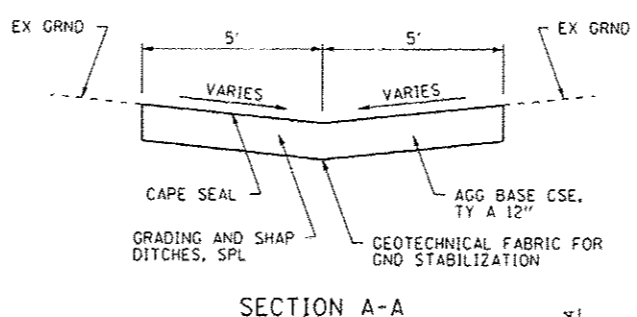
PI STA. = 206+26.78
$\Delta = 1^\circ 47' 58''$ (RT)
D = 0' 31' 41"
R = 10,850.00'
T = 170.39'
L = 340.76'
e = N/C
T.R. = N/A
S.E. RUN = N/A
P.C. STA. = 204+56.38
P.T. STA. = 207+97.14

EX CURVE QUARTERS ACCESS RD-6

PI STA. = 306+62.40
$\Delta = 13^\circ 53' 30''$ (LT)
D = 8' 25' 33"
R = 680.00'
T = 82.84'
L = 164.87'
E = 5.03'
e = NC
T.R. = N/A
S.E. RUN = N/A
P.C. STA. = 305+79.56
P.T. STA. = 307+44.43

EX CURVE MAINTENANCE SHED ACCESS RD-5

PI STA. = 305+50.30
$\Delta = 10^\circ 20' 41''$ (RT)
D = 17' 37' 46"
R = 325.00'
T = 29.42'
L = 58.68'
E = 1.33'
e = NC
T.R. = N/A
S.E. RUN = N/A
P.C. STA. = 305+20.88
P.T. STA. = 305+79.56



RESHAPE DRAINAGE PATH (SEE DETAIL THIS SHEET)

END PR CAPE SEAL AT EX OIL & CHIP PAVEMENT. LOCATION TO BE DETERMINED IN THE FIELD BY THE ENGINEER.

MAINTENANCE SHED PARKING AREA

DIASABLED PARKING STALL (SEE DETAIL)

EX PARKING BLOCKS TO BE REMOVED AND DISPOSED OF IN ACCORDANCE WITH SECTION 201 OF THE STANDARD SPECIFICATIONS. COST INCIDENTAL TO PR MICRO-SURFACING.

RESERVED PARKING (with wheelchair symbol)

250 FINE

1 R7-B (12"x18") R7-10 (12"x6") STA 201+45 RT (ATTACH TO BLDG)

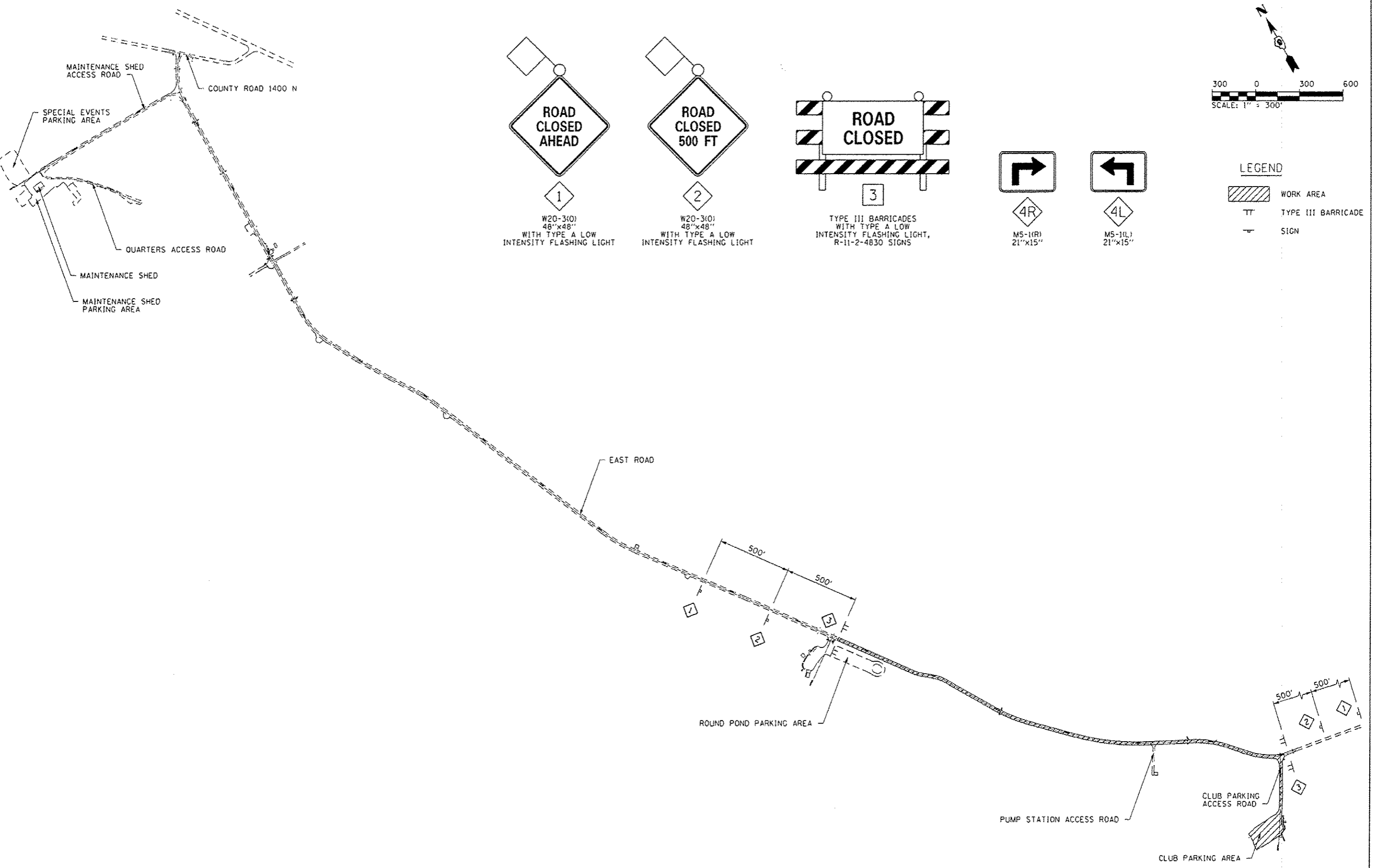
2 1 EA REMOVING AND RESETTING STREET SIGNS STA 201+00.00 LT

Parking (with arrow pointing right)

Please do not block the parking area.

- LEGEND:**
- MICRO-SURFACING, SINGLE PASS
 - CAPE SEAL
 - TEMPORARY DITCH CHECK (ONLY TO BE INSTALLED IF DIRECTED BY THE ENGINEER)

FILE NAME: L:\1007\11266-18-11\Draw\CADD_Sheets\011	USER NAME: Jack Blahemore	DESIGNED: JWB	REVISED:	STATE OF ILLINOIS DEPARTMENT OF TRANSPORTATION	ROADWAY PLAN MERMET LAKE STATE FISH AND WILDLIFE AREA		F.A. RTE.	SECTION	COUNTY	TOTAL SHEETS	SHEET NO.	
PLAN 5.dgn	DRAWN: AJK	REVISIONS:			SCALE: 1"=50'	SHEET NO. 5 OF 5 SHEETS	STA. 200+00.00 TO STA. 211+50.00	PARK ROADS	MASSAC	16	11	
PLOT SCALE: 1/8"=1'-0"	CHECKED: SPH	REVISIONS:			CONTRACT NO. 46253							
PLOT DATE: 12/21/2012	DATE: 12/21/2012	REVISIONS:			ILLINOIS FED. AID PROJECT							



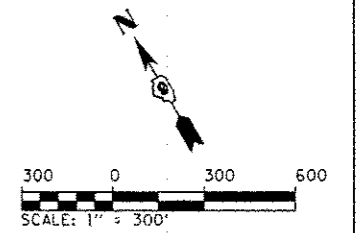
1
W20-3(0)
48"x48"
WITH TYPE A LOW
INTENSITY FLASHING LIGHT

2
W20-3(0)
48"x48"
WITH TYPE A LOW
INTENSITY FLASHING LIGHT

3
TYPE III BARRICADES
WITH TYPE A LOW
INTENSITY FLASHING LIGHT,
R-11-2-4830 SIGNS

4R
M5-1(R)
21"x15"

4L
M5-1(L)
21"x15"



LEGEND

	WORK AREA
	TYPE III BARRICADE
	SIGN

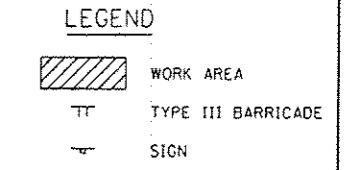
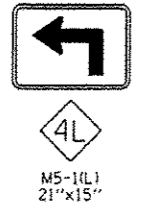
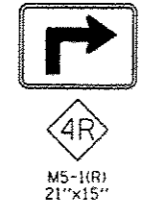
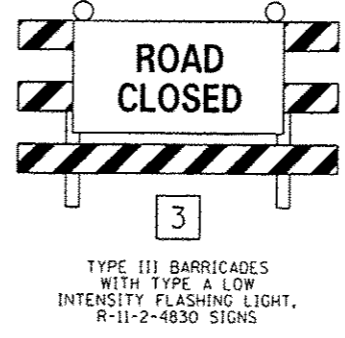
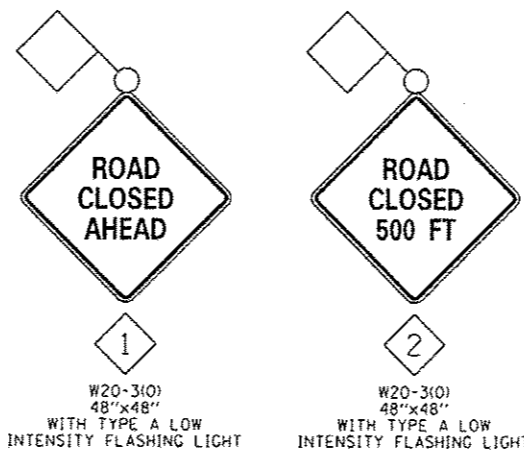
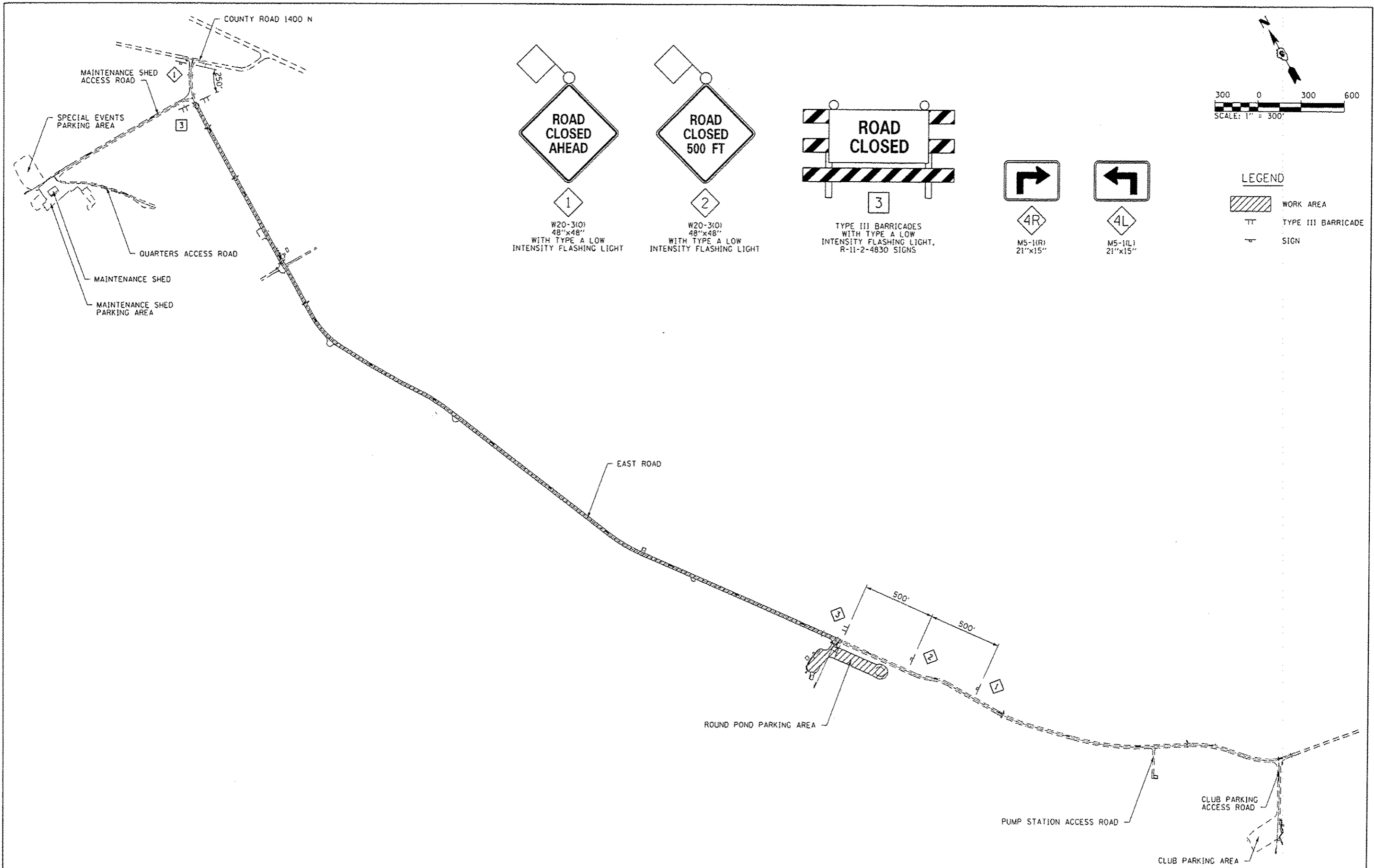
FILE NAME * L:\1007\11866-10-11\Drawings\CADD_Sheets\012	USER NAME * Jack Bikenore	DESIGNED - JWB	REVISED -
	TRAFF_CONT-1.dgn	DRAWN - AJK	REVISED -
	PLOT SCALE * 680.0000 1/ in.	CHECKED - SPH	REVISED -
	PLOT DATE = 12/21/2012	DATE - 12/21/2012	REVISED -

**STATE OF ILLINOIS
DEPARTMENT OF TRANSPORTATION**

**TRAFFIC CONTROL PLAN -- STAGE 1
MERMET LAKE STATE FISH AND WILDLIFE AREA**

SCALE: 1"=300' SHEET NO. 1 OF 3 SHEETS STA. N/A TO STA. N/A

F.A. RTE.	SECTION	COUNTY	TOTAL SHEETS	SHEET NO.
	PARK ROADS	MASSAC	16	12
			CONTRACT NO. 46253	
ILLINOIS FED. AID PROJECT				



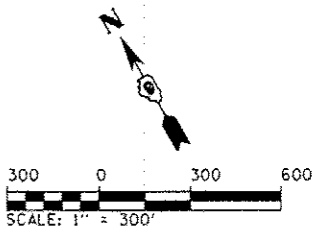
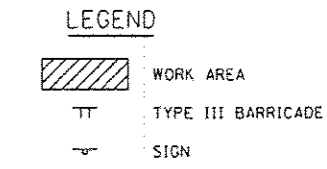
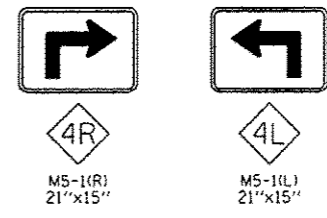
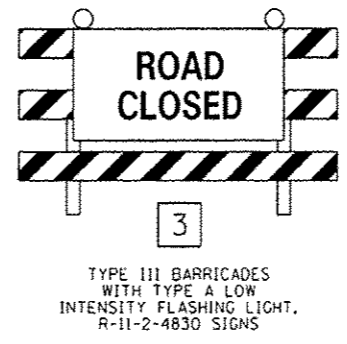
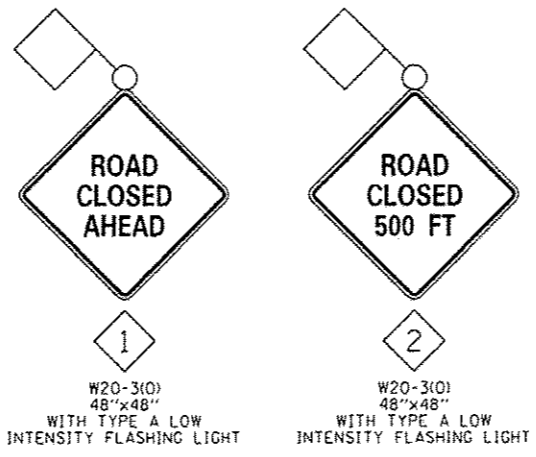
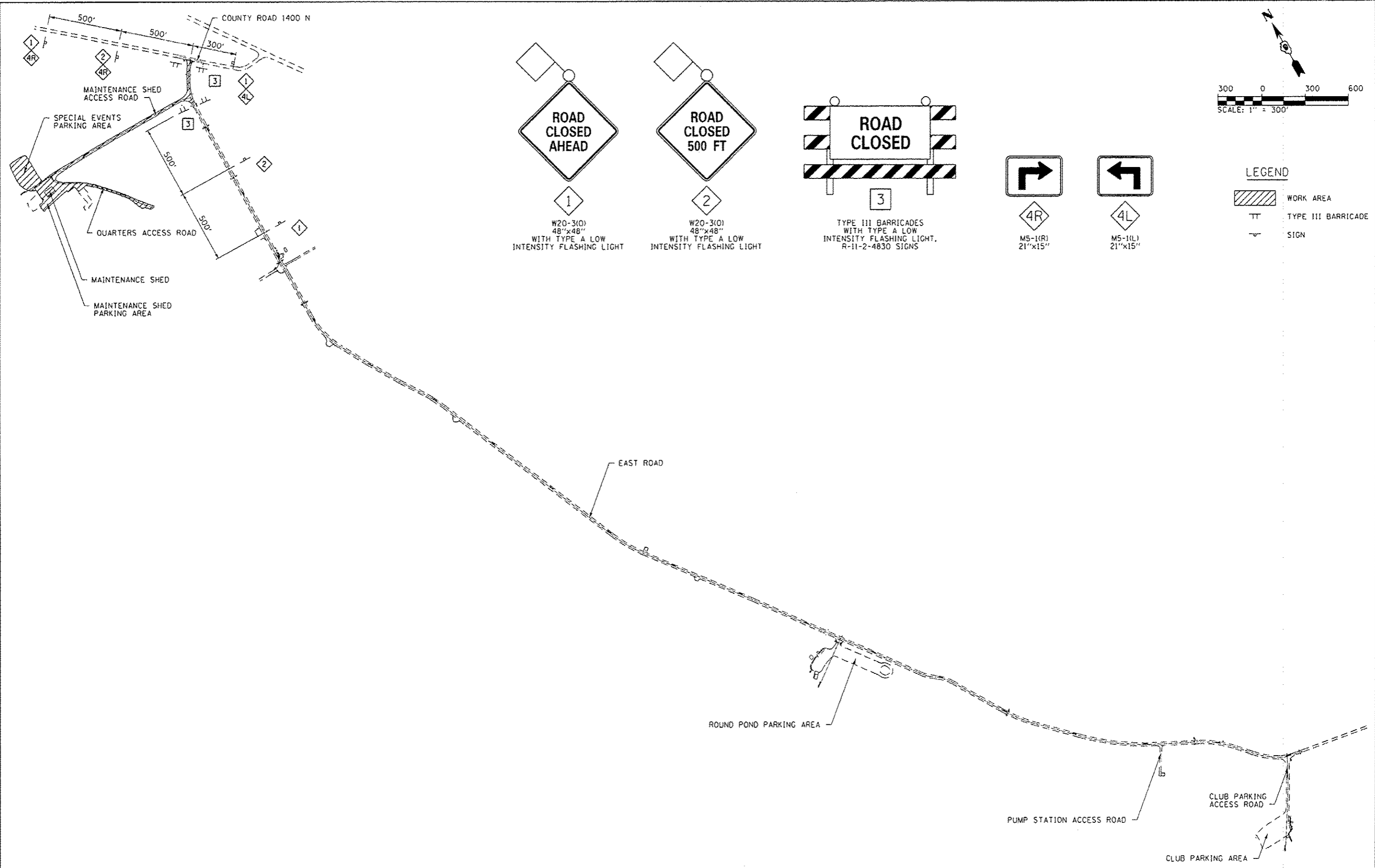
FILE NAME : L:\VDDT\11866-10-11\02rev\1400_Sheets\VB13	USER NAME : Jack Blakemore	DESIGNED : JW6	REVISED :
	TRAFF. CONT-2.dgn	DRAWN : AJK	REVISED :
	PLOT SCALE = 600.0000' / 1" = 300'	CHECKED : SPH	REVISED :
	PLOT DATE : 12/21/2012	DATE : 12/21/2012	REVISED :

**STATE OF ILLINOIS
DEPARTMENT OF TRANSPORTATION**

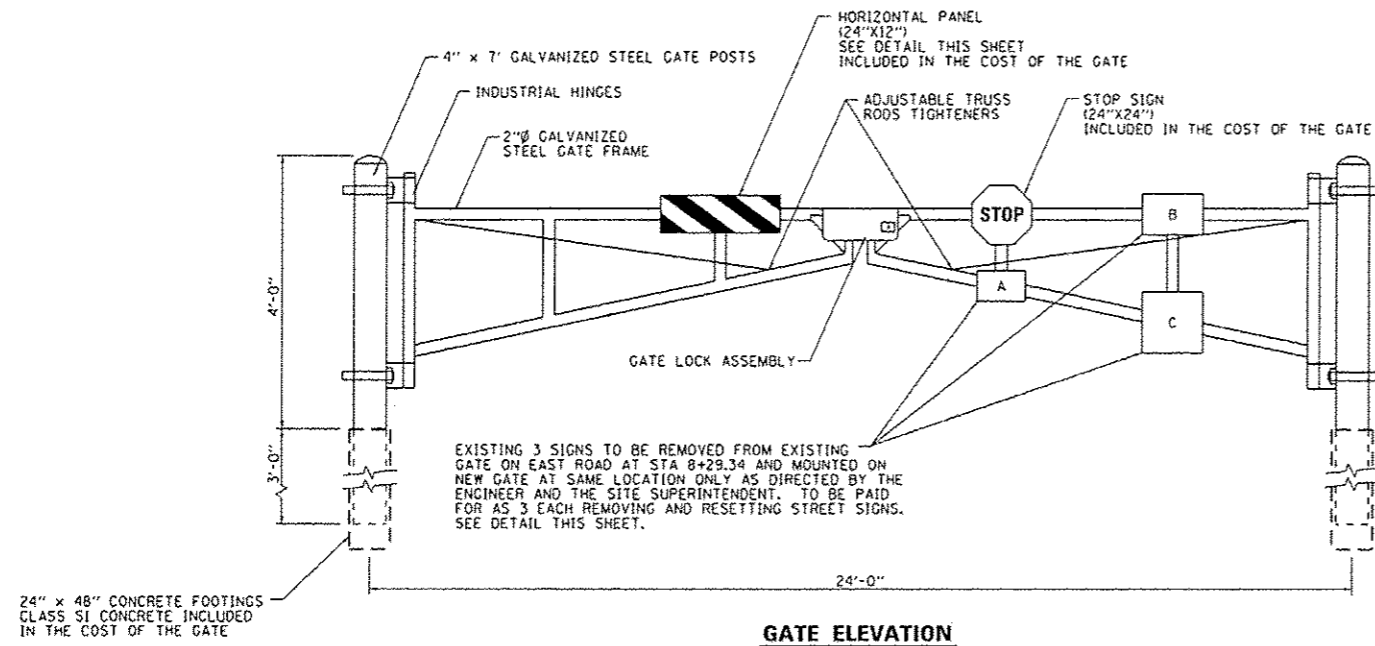
**TRAFFIC CONTROL PLAN - STAGE 2
MERMET LAKE STATE FISH AND WILDLIFE AREA**

F.A. RTE.	SECTION	COUNTY	TOTAL SHEETS	SHEET NO.
	PARK ROADS	MASSAC	16	13
CONTRACT NO. 46253				
ILLINOIS FED. AID PROJECT				

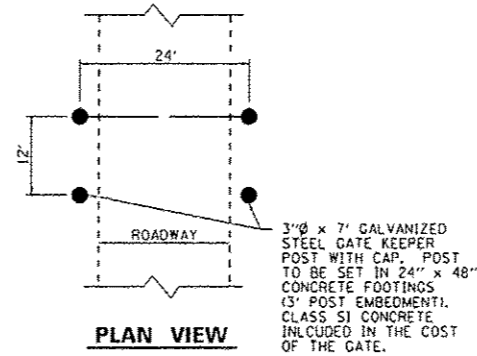
SCALE: 1"=300' SHEET NO. 2 OF 3 SHEETS STA. N/A TO STA. N/A



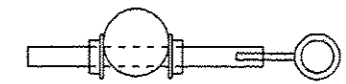
FILE NAME : L:\1107\11866-10-11\10-0-1\CAD\ Sheets\014	USER NAME : Jack Blakemore	DESIGNED - JWB	REVISED -	STATE OF ILLINOIS DEPARTMENT OF TRANSPORTATION	TRAFFIC CONTROL PLAN - STAGE 3 MERMET LAKE STATE FISH AND WILDLIFE AREA	SCALE: 1"=300'	SHEET NO. 3 OF 3 SHEETS	STA. N/A TO STA. N/A	F.A. RTE.	SECTION	COUNTY	TOTAL SHEETS	SHEET NO.	
	TRAFFIC CONTROL 3.dgn	DRAWN - AJK	REVISED -							PARK ROADS	MASSAC	16	14	
	PLOT SCALE - 680.0000 / in.	CHECKED - SPH	REVISED -											
	PLOT DATE : 12/21/2012	DATE - 12/21/2012	REVISED -											
									CONTRACT NO. 46253					
ILLINOIS FED. AID PROJECT														



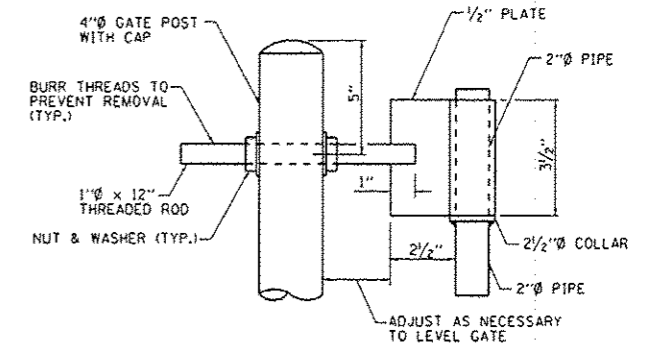
GATE ELEVATION



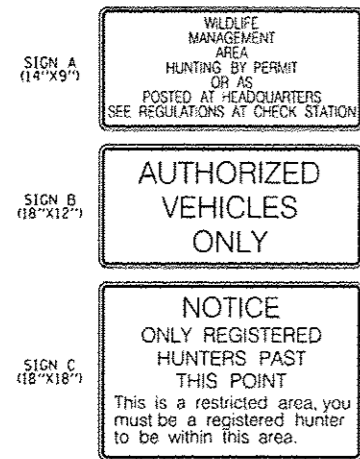
PLAN VIEW



PLAN VIEW

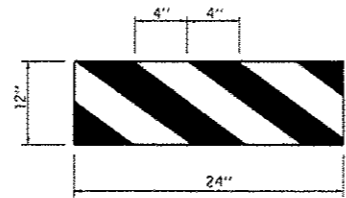


TOP GATE HINGE

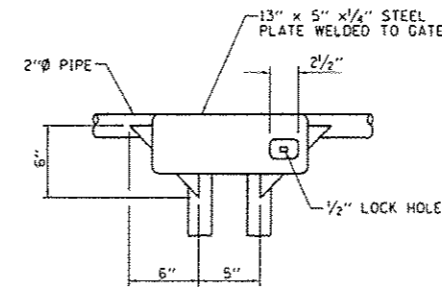


REMOVE AND RESET EXISTING SIGNS

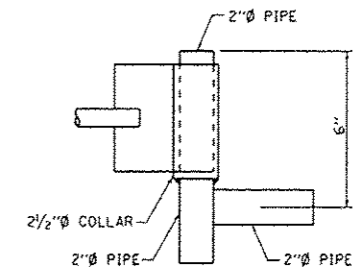
MOUNT 3 SIGNS ONLY AS DIRECTED BY THE ENGINEER AND THE SITE SUPERINTENDENT.



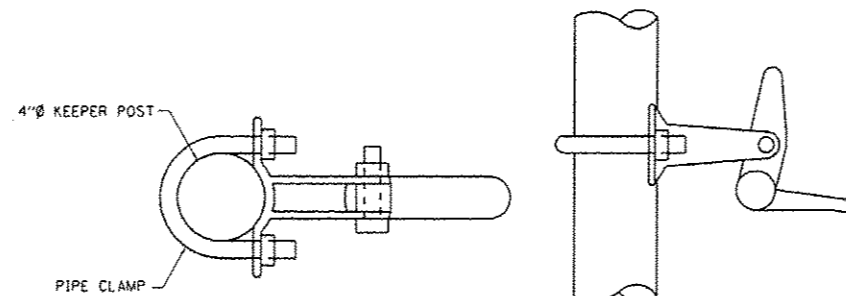
HORIZONTAL PANEL DETAIL



GATE LOCK ASSEMBLY



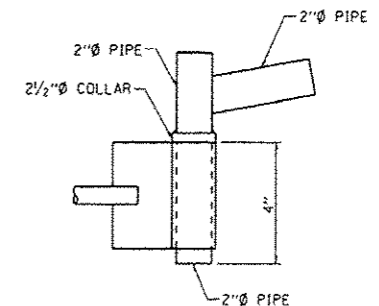
DETAIL AT TOP HINGE



PLAN VIEW

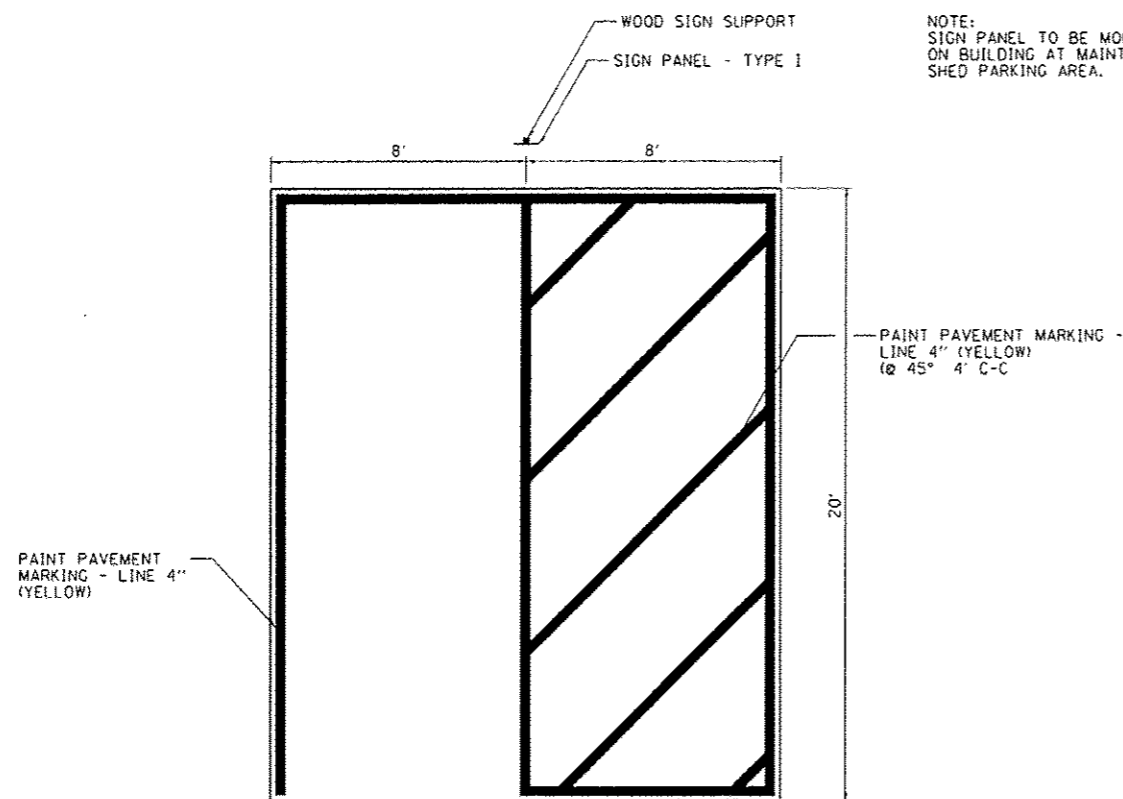
SIDE VIEW

AUTOMATIC GATE KEEPER

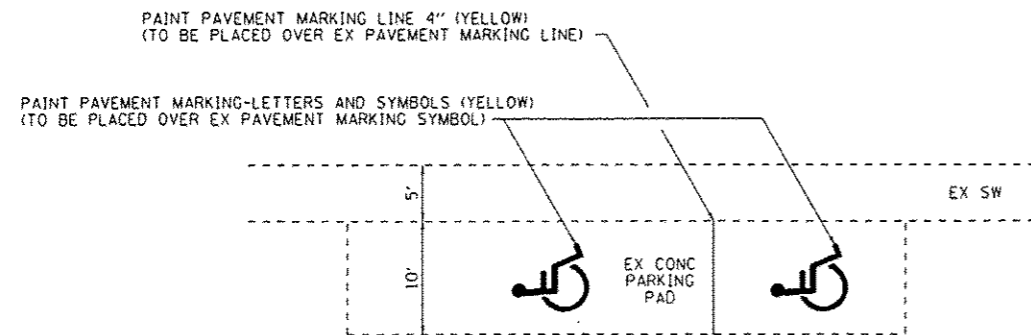


DETAIL AT BOTTOM HINGE

FILE NAME * L:\1001\11056-18-11\Draw\CADD\Sheets\DIS	USER NAME * Jack Blahomere	DESIGNED - JWB	REVISED -	STATE OF ILLINOIS DEPARTMENT OF TRANSPORTATION	TUBULAR STEEL GATE DETAIL MERMET LAKE STATE FISH AND WILDLIFE AREA		F.A. RTE.	SECTION	COUNTY	TOTAL SHEETS	SHEET NO.	
	METAL_GATE_DETAIL.dgn	DRAWN - AJK	REVISED -		SCALE: NTS	SHEET NO. 1 OF 1 SHEETS	STA. N/A TO STA. N/A	PARK ROADS	MASSAC	16	15	
	PLOT SCALE = 6.8888 1/16	CHECKED - SPH	REVISED -									
	PLOT DATE = 12/21/2012	DATE - 12/21/2012	REVISED -									
							CONTRACT NO. 46253		ILLINOIS FED. AID PROJECT			

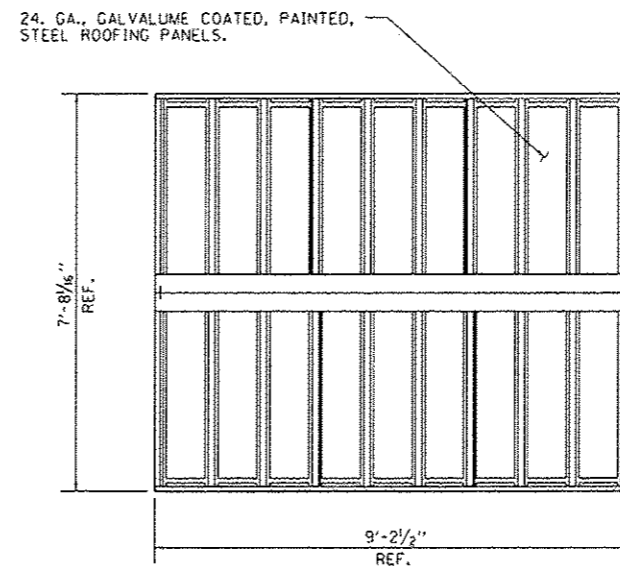


DISABLED PARKING STALL STRIPING DIMENSIONS
EAST ROAD RESTROOM
MAINTENANCE SHED PARKING AREA



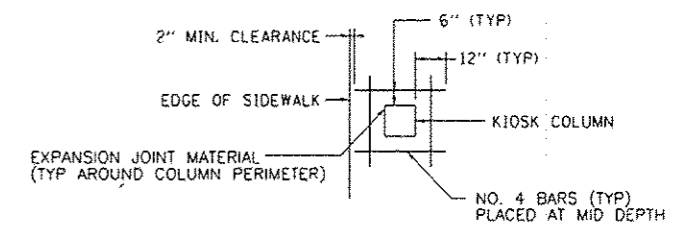
DISABLED PARKING STALL STRIPING DIMENSIONS
ROUND POND PARKING AREA
CLUB PARKING AREA

NOTE:
SIGN PANEL TO BE MOUNTED
ON BUILDING AT MAINTENANCE
SHED PARKING AREA.

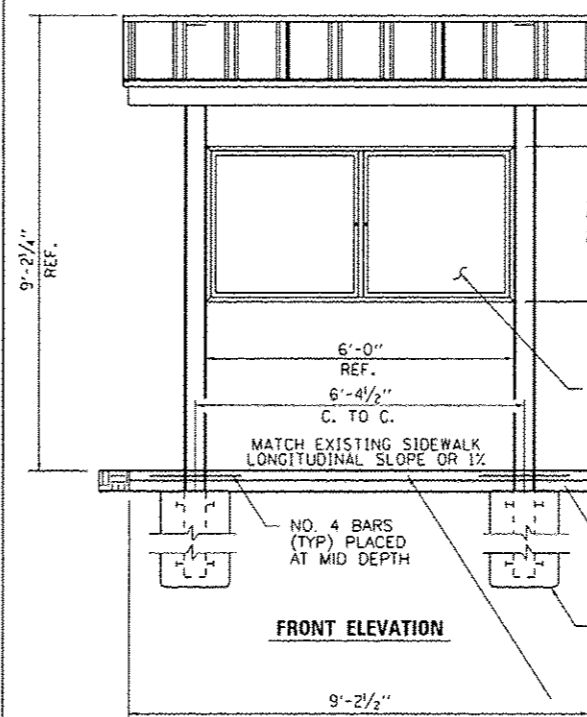


ROOF PLAN

- NOTES:
- SOLAR LIGHT AND POWER ASSEMBLY SHALL ONLY BE INSTALLED ON KIOSK LOCATED AT STA 20+30.68 (EAST ROAD).
 - PROPOSED SIDEWALK SHALL BE CONSTRUCTED IN ACCORDANCE WITH CURRENT ADA REQUIREMENTS (NO SLOPE SHALL EXCEED 2% IN ANY DIRECTION).
 - EXPANSION JOINT MATERIAL AND REBAR SHALL BE PLACED AROUND THE KIOSK SUPPORTS WHERE THEY ARE ADJACENT TO THE PCC SIDEWALK (SEE DETAIL). COST INCIDENTAL TO INFORMATION KIOSK COMPLETE.
 - ALL EXCAVATION OR EMBANKMENT REQUIRED TO CONSTRUCT THE KIOSK, PCC SIDEWALK AND AGGREGATE BASE COURSE SHALL BE CONSIDERED INCIDENTAL TO THE COST OF THE INFORMATION KIOSK COMPLETE.

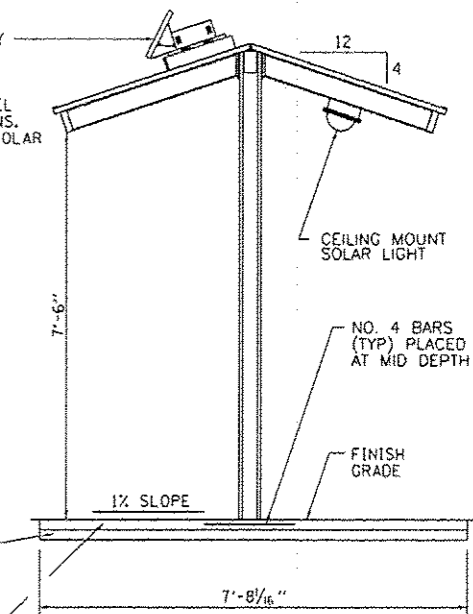


COLUMN PLAN VIEW



FRONT ELEVATION

SOLAR ELECTRIC POWER ASSEMBLY (SOLAR PANEL TO FACE SOUTH). SOLAR PANEL TO BE MOUNTED ON KIOSK ACCORDING TO KIOSK MANUFACTURER'S AND SOLAR PANEL MANUFACTURER'S RECOMMENDATIONS. MOUNTING COST INCIDENTAL TO SOLAR LIGHTING UNIT COMPLETE.



SIDE VIEW

TYPICAL KIOSK DETAILS

NO SCALE

FILE NAME * L:\1007\11066-10-11\10-01-CADD_Sheets\B16	USER NAME * Jack Blokemore MISCELLANEOUS DETAILS.dgn	DESIGNED - JWB DRAWN - AJK	REVISED - REVISED -
	PLOT SCALE * 6.0000 1/16 in.	CHECKED - SPH	REVISED -
	PLOT DATE * 12/21/2012	DATE - 12/21/2012	REVISED -

STATE OF ILLINOIS
DEPARTMENT OF TRANSPORTATION

MISCELLANEOUS DETAILS
MERMET LAKE STATE FISH AND WILDLIFE AREA

SCALE: NTS SHEET NO. 1 OF 1 SHEETS STA. N/A TO STA. N/A

F.A. RTE.	SECTION PARK ROADS	COUNTY MASSAC	TOTAL SHEETS 16	SHEET NO. 16
			CONTRACT NO. 46253	
ILLINOIS FED. AID PROJECT				