

EXIST. IL. 59	PT# 103	N 2062909.7986	E 1029332.8628	STA. 477+07.27
	PC CURVE 1	N 2063413.8396	E 1029032.3245	STA. 482+94.11
	PI CURVE 1	N 2064178.0622	E 1028576.6509	STA. 491+83.87
	PT CURVE 1	N 2065067.8229	E 1028577.3200	STA. 500+30.43
EXIST. FOX LAKE RD.	PT# 100	N 2067234.7888	E 1028578.9496	STA. 521+97.40
	PT# A10	N 2063285.2791	E 1027928.2032	STA. 180+64.65
	PC CURVE 1	N 2064621.0688	E 1028440.9676	STA. 194+95.48
	PI CURVE 1	N 2064783.3250	E 1028503.2522	STA. 196+69.28
EXIST. YMCA ACCESS RD.	PT CURVE 1	N 2064953.2131	E 1028466.5850	STA. 198+33.31
	PC CURVE 2	N 2064953.2131	E 1028466.5850	STA. 198+33.31
	PI CURVE 2	N 2065036.5769	E 1028448.5924	STA. 199+18.59
	PT CURVE 2	N 2065037.1112	E 1028533.8741	STA. 199+56.43
PROP. DRIVEWAY	PT# A11	N 2065037.3841	E 1028577.4408	STA. 200+00.00
	PT# 115	N 2065037.3841	E 1028577.4408	STA. 100+00.00
	PT# 114	N 2065061.2843	E 1028831.0404	STA. 102+54.69
	PT# 2160	N 2065065.3284	E 1029278.8081	STA. 107+02.51
PROP. DRIVEWAY	PT# A20	N 2065061.5543	E 1028466.8177	STA. 10+00.00
	PC CURVE 1	N 2065126.5050	E 1028410.3718	STA. 10+86.05
	PI CURVE 1	N 2065172.2092	E 1028370.6522	STA. 11+46.60
	PT CURVE 1	N 2065232.6795	E 1028373.7930	STA. 12+01.15
	PC CURVE 2	N 2065276.0292	E 1028376.0445	STA. 12+44.56
	PI CURVE 2	N 2065312.5211	E 1028377.9399	STA. 12+81.10
	PT CURVE 2	N 2065341.6377	E 1028355.8612	STA. 13+14.63
	PT# A21	N 2065372.0047	E 1028332.8344	STA. 13+52.74

**CONTROL POINTS**

CP# 1	N 2063497.8249	E 1027992.0217
CP# 2	N 2063867.5596	E 1028132.1088
CP# 3	N 2064993.5997	E 1028391.1221
CP# 4	N 2065061.0788	E 1028668.3899
CP# 5	N 2065621.8662	E 1028629.7496
CP# 6	N 2066529.0287	E 1028630.6505
CP# 7	N 2064623.7496	E 1028555.8305
CP# 8	N 2063976.1842	E 1028711.8057
CP# 9	N 2064346.8208	E 1028652.9094

**BENCHMARKS**

- BM 1 - SPIKE IN P.P. S.E. CORNER OF US12/IL 59 & FOX LAKE RD.
- BM 2 - RR SPIKE (FOUND) IN P.P. W. SIDE OF US 12/IL 59, 3RD P.P. N. OF FOX LAKE RD. ±500' N. OF FOX LAKE RD. ELEV. 784.26
- BM 3 - SPIKE IN P.P. WEST SIDE OF FOX LAKE RD. (STA. 485+25/25' L) @ ENT. TO PETER BAKER & SONS EXCAVATING CO.

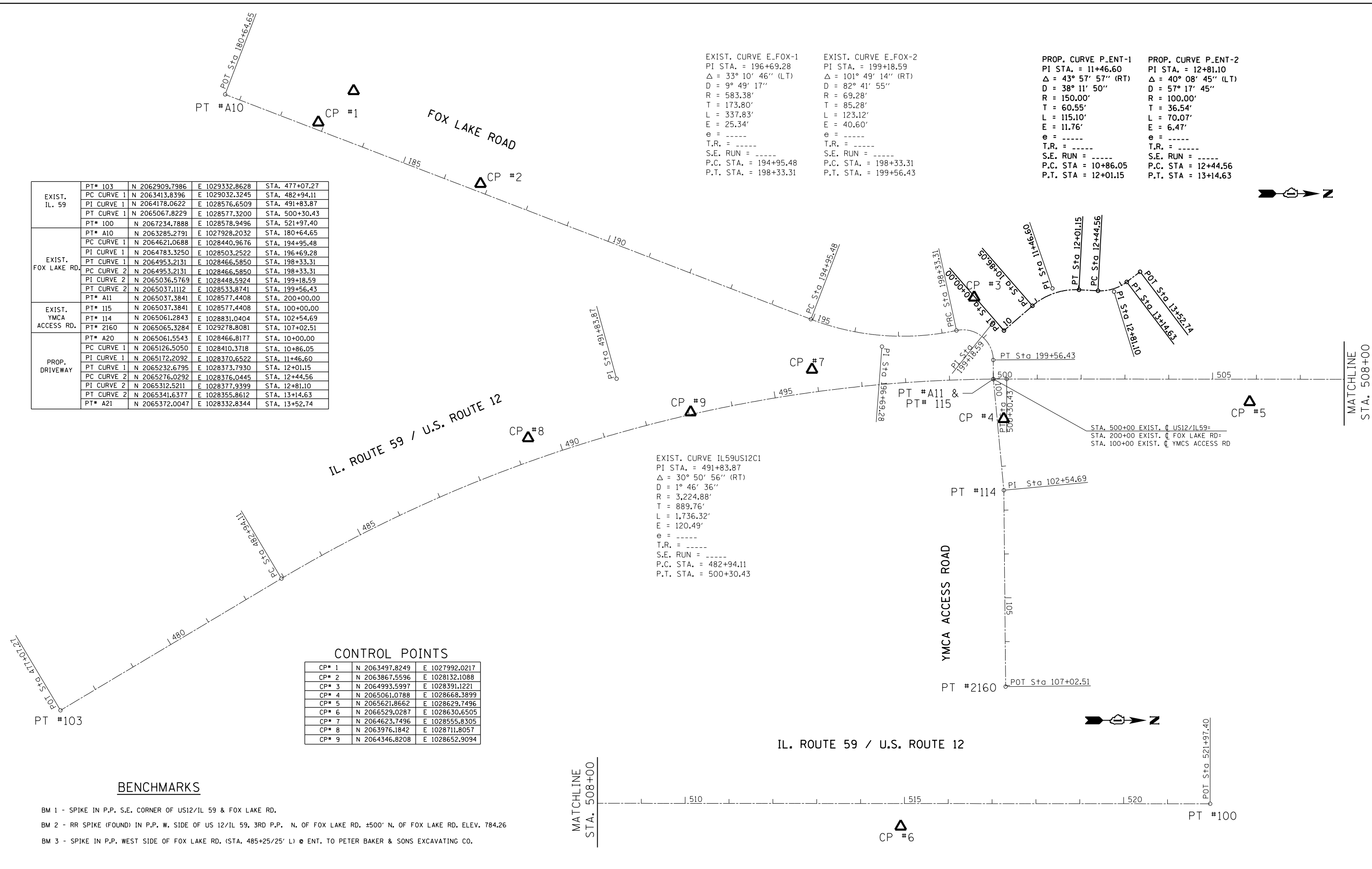
EXIST. CURVE E\_FOX-1  
 PI STA. = 196+69.28  
 $\Delta = 33^\circ 10' 46''$  (LT)  
 $D = 9^\circ 49' 17''$   
 $R = 583.38'$   
 $T = 173.80'$   
 $L = 337.83'$   
 $E = 25.34'$   
 $e = \text{-----}$   
 T.R. = -----  
 S.E. RUN = -----  
 P.C. STA. = 194+95.48  
 P.T. STA. = 198+33.31

EXIST. CURVE E\_FOX-2  
 PI STA. = 199+18.59  
 $\Delta = 101^\circ 49' 14''$  (RT)  
 $D = 82^\circ 41' 55''$   
 $R = 69.28'$   
 $T = 85.28'$   
 $L = 123.12'$   
 $E = 40.60'$   
 $e = \text{-----}$   
 T.R. = -----  
 S.E. RUN = -----  
 P.C. STA. = 198+33.31  
 P.T. STA. = 199+56.43

PROP. CURVE P\_ENT-1  
 PI STA. = 11+46.60  
 $\Delta = 43^\circ 57' 57''$  (RT)  
 $D = 38^\circ 11' 50''$   
 $R = 150.00'$   
 $T = 60.55'$   
 $L = 115.10'$   
 $E = 11.76'$   
 $e = \text{-----}$   
 T.R. = -----  
 S.E. RUN = -----  
 P.C. STA. = 10+86.05  
 P.T. STA. = 12+01.15

PROP. CURVE P\_ENT-2  
 PI STA. = 12+81.10  
 $\Delta = 40^\circ 08' 45''$  (LT)  
 $D = 57^\circ 17' 45''$   
 $R = 100.00'$   
 $T = 36.54'$   
 $L = 70.07'$   
 $E = 6.47'$   
 $e = \text{-----}$   
 T.R. = -----  
 S.E. RUN = -----  
 P.C. STA. = 12+44.56  
 P.T. STA. = 13+14.63

EXIST. CURVE IL59US12C1  
 PI STA. = 491+83.87  
 $\Delta = 30^\circ 50' 56''$  (RT)  
 $D = 1^\circ 46' 36''$   
 $R = 3,224.88'$   
 $T = 889.76'$   
 $L = 1,736.32'$   
 $E = 120.49'$   
 $e = \text{-----}$   
 T.R. = -----  
 S.E. RUN = -----  
 P.C. STA. = 482+94.11  
 P.T. STA. = 500+30.43



MATCHLINE  
STA. 508+00

MATCHLINE  
STA. 508+00