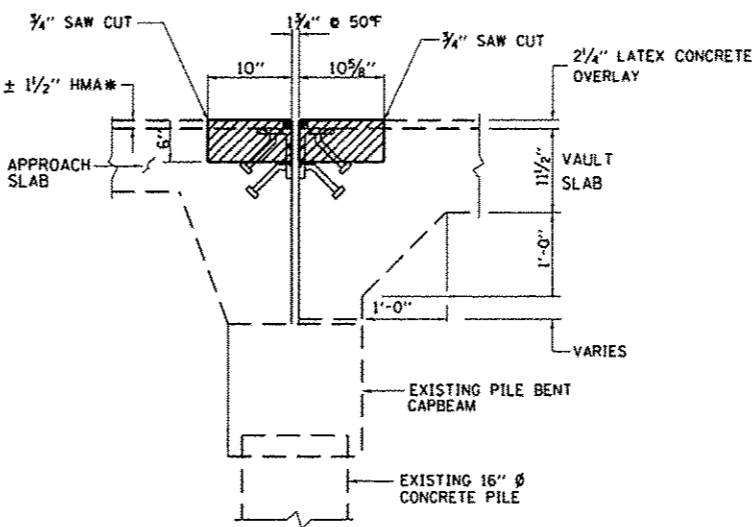
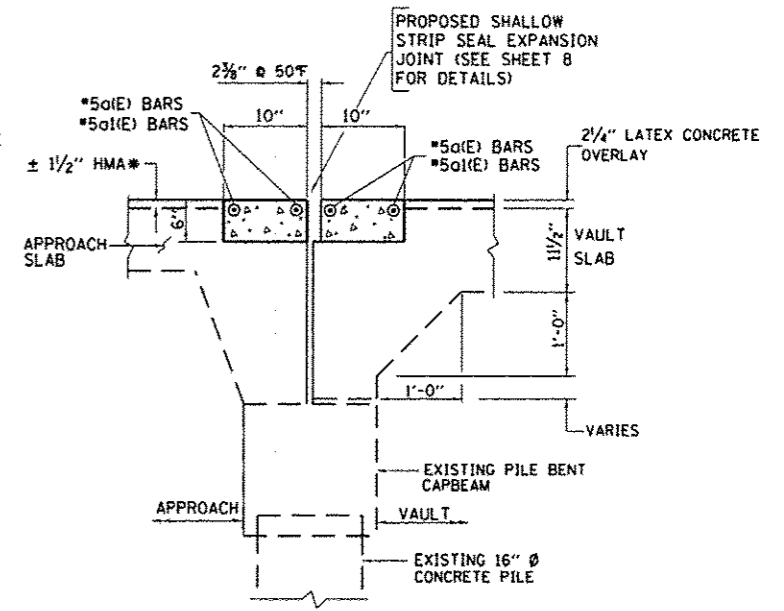


**PLAN**  
**SOUTH APPROACH SLAB**  
(NORTH APPROACH SLAB SIMILAR)

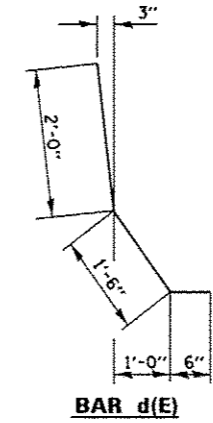


**EXISTING EXPANSION JOINT**  
**AT APPROACH SLAB**  
**JOINTS 0 AND 17**

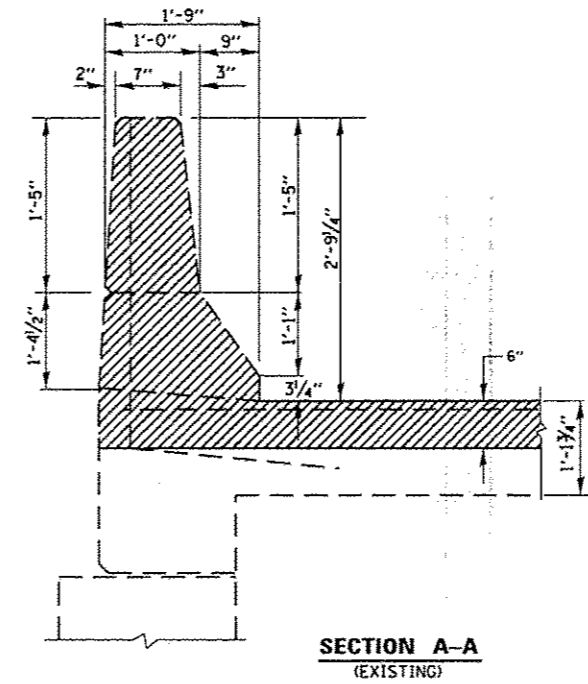
\* REMOVAL OF HMA IS INCLUDED IN THE COST OF CONCRETE REMOVAL.



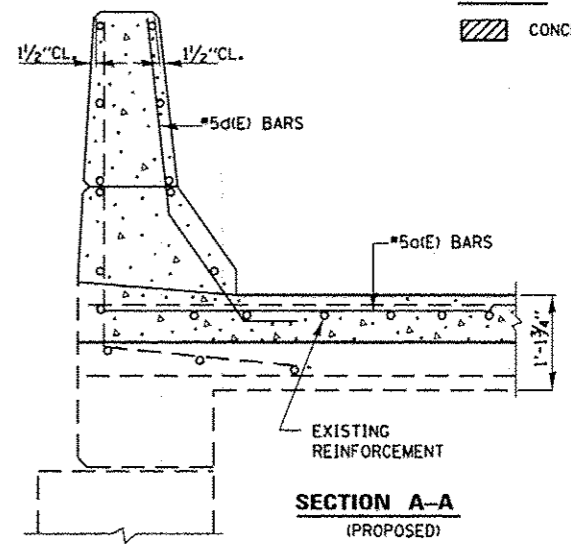
**PROPOSED EXPANSION JOINT**  
**AT APPROACH SLAB**  
**JOINTS 0 AND 17**



**BAR d(E)**



**SECTION A-A**  
(EXISTING)



**SECTION A-A**  
(PROPOSED)

**BILL OF MATERIALS**

BAR NO.	SIZE	LENGTH	SHAPE
a(E)	#5	20'-0"	—
a(E)	#5	15'-4"	—
d(E)	#5	4'-0"	⌋
REINFORCEMENT BARS (EPOXY COATED)			POUND 727
CONCRETE REMOVAL			CU.YD. 6.1
CONCRETE SUPERSTRUCTURE			CU.YD. 5.9
BAR SPLICERS			EACH 16

**LEGEND:**

CONCRETE REMOVAL

FILE NAME: c:\p\work\psdot\pyrzanovskir\b\0310668	USER NAME: pyrzanovskir	DESIGNED: -	REVISED: -	<b>STATE OF ILLINOIS</b> <b>DEPARTMENT OF TRANSPORTATION</b>	<b>U.S. 41 OVER DEERPATH ROAD</b> <b>TRANSVERSE EXPANSION JOINT DETAILS</b> <b>S.N. 049-0033</b>		F.A.P. RTE. 346	SECTION 1305-1(I)2	COUNTY LAKE	TOTAL SHEETS 15	SHEET NO. 7
PLOT SCALE: 1/8" = 1'-0"	PLOT DATE: 1/28/2013	DRAWN: -	REVISED: -		SCALE: SHEET OF SHEETS STA. TO STA.	CONTRACT NO. 60T65		ILLINOIS FED. AID PROJECT			
CHECKED: -	DATE: -	REVISED: -	REVISED: -								