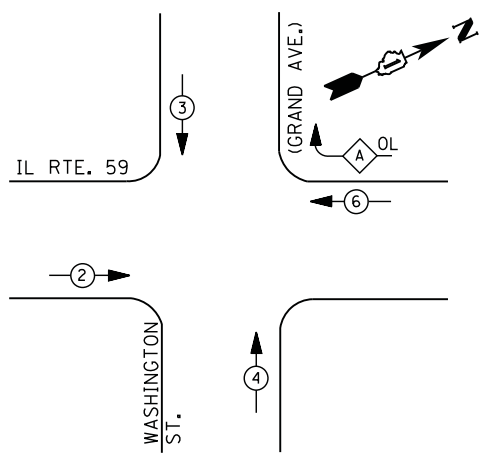
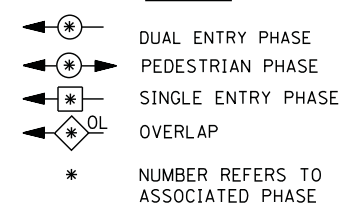


CONTROLLER SEQUENCE



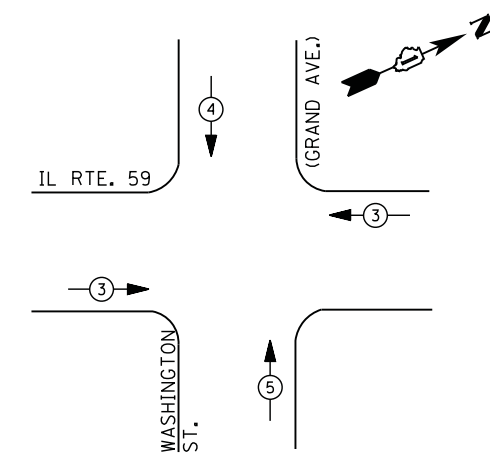
LEGEND



RIGHT TURN OVERLAP PHASE DESIGNATION

| OVERLAP LETTER | PERMISSIVE PHASE | PROTECTED PHASE |
|----------------|------------------|-----------------|
| A | = | 6 + 3 |

PHASE DESIGNATION DIAGRAM



EMERGENCY VEHICLE PREEMPTION SEQUENCE

| EMERGENCY VEHICLE PREEMPTORS | | | |
|------------------------------|-----|---|---|
| EMERGENCY VEHICLE PREEMPTOR | 3 | 4 | 5 |
| MOVEMENT | ← → | ↓ | ↑ |

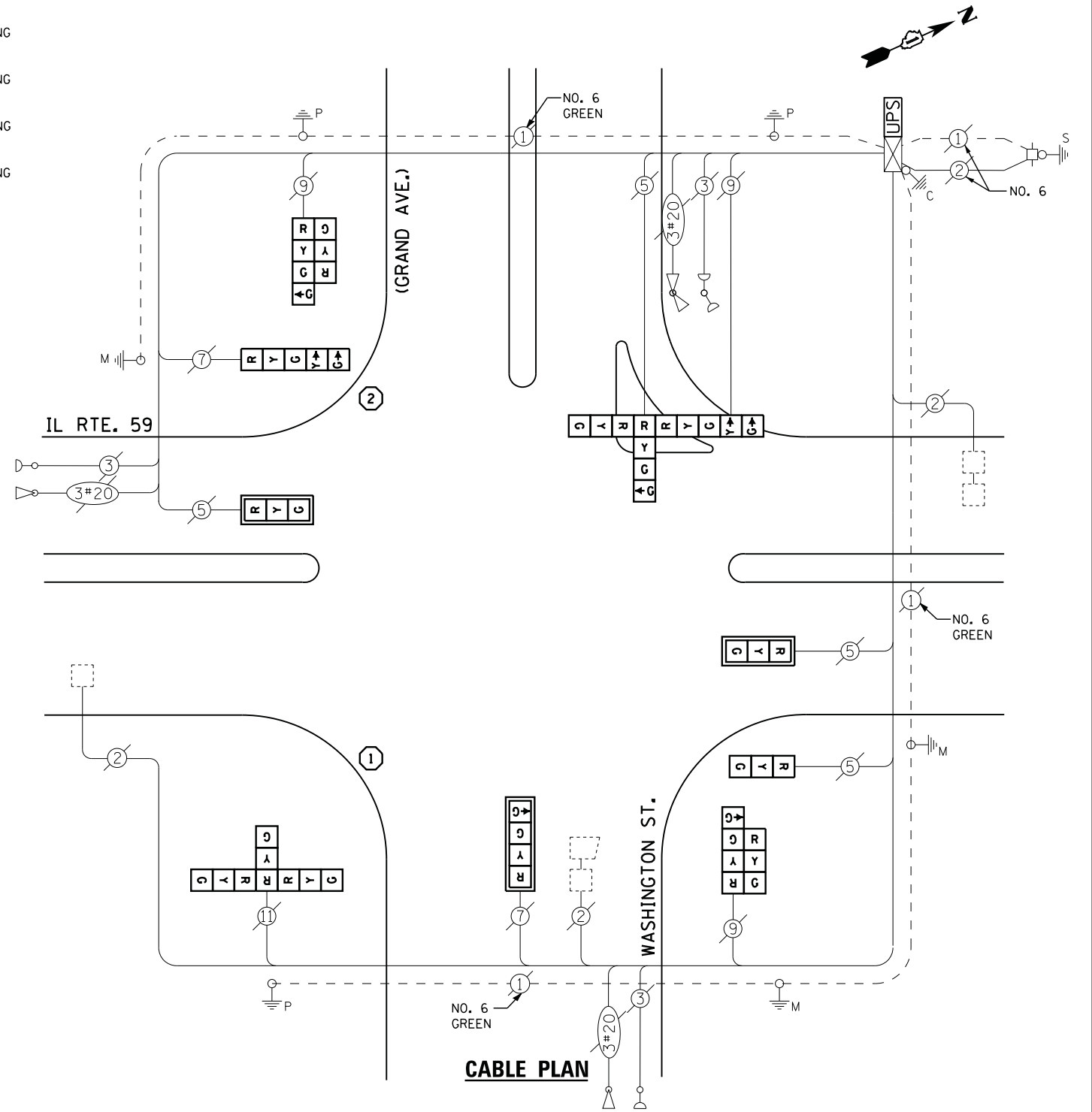
I. D. O. T. TRAFFIC SIGNAL INSTALLATION ELECTRICAL SERVICE REQUIREMENTS

| TYPE | NO. LAMPS | WATTAGE | | % OPERATIONS | TOTAL WATTAGE |
|--------------|-----------|---------|-----|--------------|---------------|
| | | INCAND. | LED | | |
| SIGNAL (RED) | 15 | 135 | 17 | 0.50 | 128 |
| (YELLOW) | 15 | 135 | 25 | 0.25 | 94 |
| (GREEN) | 19 | 135 | 15 | 0.25 | 71 |
| ARROW | 4 | 135 | 12 | 0.10 | 5 |
| PED. SIGNAL | -- | 90 | 25 | 1.00 | -- |
| CONTROLLER | 1 | 100 | 100 | 1.00 | 100 |
| ILLUM. SIGN | | 252 | 25 | 0.05 | -- |
| VIDEO SYSTEM | -- | 150 | - | 1.00 | -- |
| TOTAL = | | | | | 398 |

ENERGY COSTS- **BILLED TO: VILLAGE OF FOX LAKE**
66 THILLEN DRIVE
FOX LAKE, IL 60020

ENERGY SUPPLY - CONTACT **TERRI BLECK**
PHONE 847-816-5239
COMMONWEALTH EDISON

- ① REPLACE 14 FT. PAINTED POST. RE-USE EXISTING TYPE A CONCRETE FOUNDATION.
- ② REPLACE 15 FT. PAINTED POST. RE-USE EXISTING TYPE A CONCRETE FOUNDATION.
- ③ REPLACE 16 FT. PAINTED POST. RE-USE EXISTING TYPE A CONCRETE FOUNDATION.
- ④ REPLACE 18 FT. PAINTED POST. RE-USE EXISTING TYPE A CONCRETE FOUNDATION.



SCHEDULE OF QUANTITIES

| QUANTITY | UNIT | ITEM |
|----------|------|---|
| 1 | EACH | MAINTENANCE OF EXISTING TRAFFIC SIGNAL INSTALLATION |
| 1 | EACH | TRAFFIC SIGNAL POST, GALVANIZED STEEL 14 FT. |
| 1 | EACH | TRAFFIC SIGNAL POST, GALVANIZED STEEL 15 FT. |
| 2 | EACH | SIGNAL HEAD, LED, 1-FACE, 3-SECTION, MAST-ARM MOUNTED |
| 1 | EACH | SIGNAL HEAD, LED, 1-FACE, 3-SECTION, BRACKET MOUNTED |
| 1 | EACH | SIGNAL HEAD, LED, 1-FACE, 4-SECTION, MAST ARM MOUNTED |
| 1 | EACH | SIGNAL HEAD, LED, 1-FACE, 5-SECTION, BRACKET MOUNTED |
| 2 | EACH | SIGNAL HEAD, LED, 2-FACE, 1-3 SECTION, 1-4 SECTION, BRACKET MOUNTED |
| 1 | EACH | SIGNAL HEAD, LED, 3-FACE, 3-SECTION, BRACKET MOUNTED |
| 1 | EACH | SIGNAL HEAD, LED, 3-FACE, 1-3 SECTION, 1-4 SECTION, 1-5 SECTION BRACKET MOUNTED |
| 3 | EACH | TRAFFIC SIGNAL BACKPLATE, LOUVERED, ALUMINUM |
| 1 | EACH | MODIFY EXISTING CONTROLLER CABINET |
| 1 | EACH | REMOVE EXISTING TRAFFIC SIGNAL EQUIPMENT |
| 1 | EACH | UNINTERRUPTABLE POWER SUPPLY, SPECIAL |

REMOVAL OF EXISTING TRAFFIC SIGNAL EQUIPMENT

THE FOLLOWING ITEMS SHALL BE REMOVED BY THE CONTRACTOR AND SHALL BE DISPOSED OF BY THEM OUTSIDE THE RIGHT-OF-WAY AT THEIR EXPENSE. THE SALVAGE VALUE OF THE REMOVED EQUIPMENT SHALL BE REFLECTED IN THE CONTRACT BID PRICE.

| | | |
|---|------|--|
| 3 | EACH | SIGNAL HEAD, 1 - FACE, 3 - SECTION |
| 1 | EACH | SIGNAL HEAD, 1 - FACE, 4 - SECTION |
| 1 | EACH | SIGNAL HEAD, 1 - FACE, 5 - SECTION |
| 2 | EACH | SIGNAL HEAD, 2 - FACE, 1-3 SECTION, 1-4 SECTION |
| 1 | EACH | SIGNAL HEAD, 3 - FACE, 1-3 SECTION, 1-4 SECTION, 1-5 SECTION |
| 1 | EACH | SIGNAL HEAD, 3 - FACE, 3-3 SECTION |
| 3 | EACH | TRAFFIC SIGNAL BACKPLATE |
| 2 | EACH | SIGNAL POST |

| | | | |
|---|------------------------|---------------|-----------|
| FILE NAME = | USER NAME = sUsers | DESIGNED - DW | REVISED - |
| N:\Projects\312004\Design\CAD\Sheet Files\12-004 Sheets NW Lake Co\06850.CAB.LAKE.dgn | | DRAWN - JDH | REVISED - |
| | PLOT SCALE = sSCALE | CHECKED - KMM | REVISED - |
| | PLOT DATE = 12/10/2012 | DATE - | REVISED - |

STATE OF ILLINOIS DEPARTMENT OF TRANSPORTATION

| IL ROUTE 59 AT GRAND AVENUE/WASHINGTON STREET SCHEDULE OF QUANTITIES, CABLE PLAN, PHASE DESIGNATION DIAGRAM AND EMERGENCY VEHICLE PREEMPTION SEQUENCE | | | |
|---|-----------|-----------|--------------|
| SCALE: N.T.S. | SHEET NO. | OF SHEETS | STA. TO STA. |
| | | | |

| F.A. RTE. | SECTION | COUNTY | TOTAL SHEETS | SHEET NO. |
|---------------------------|------------|--------|--------------|-----------|
| | 2012-040TS | LAKE | 60 | 23 |
| CONTRACT NO. 60T85 | | | | |
| ILLINOIS FED. AID PROJECT | | | | |

TS# 6850
FOX LAKE