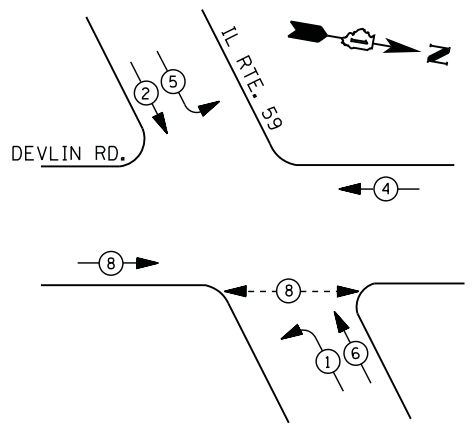


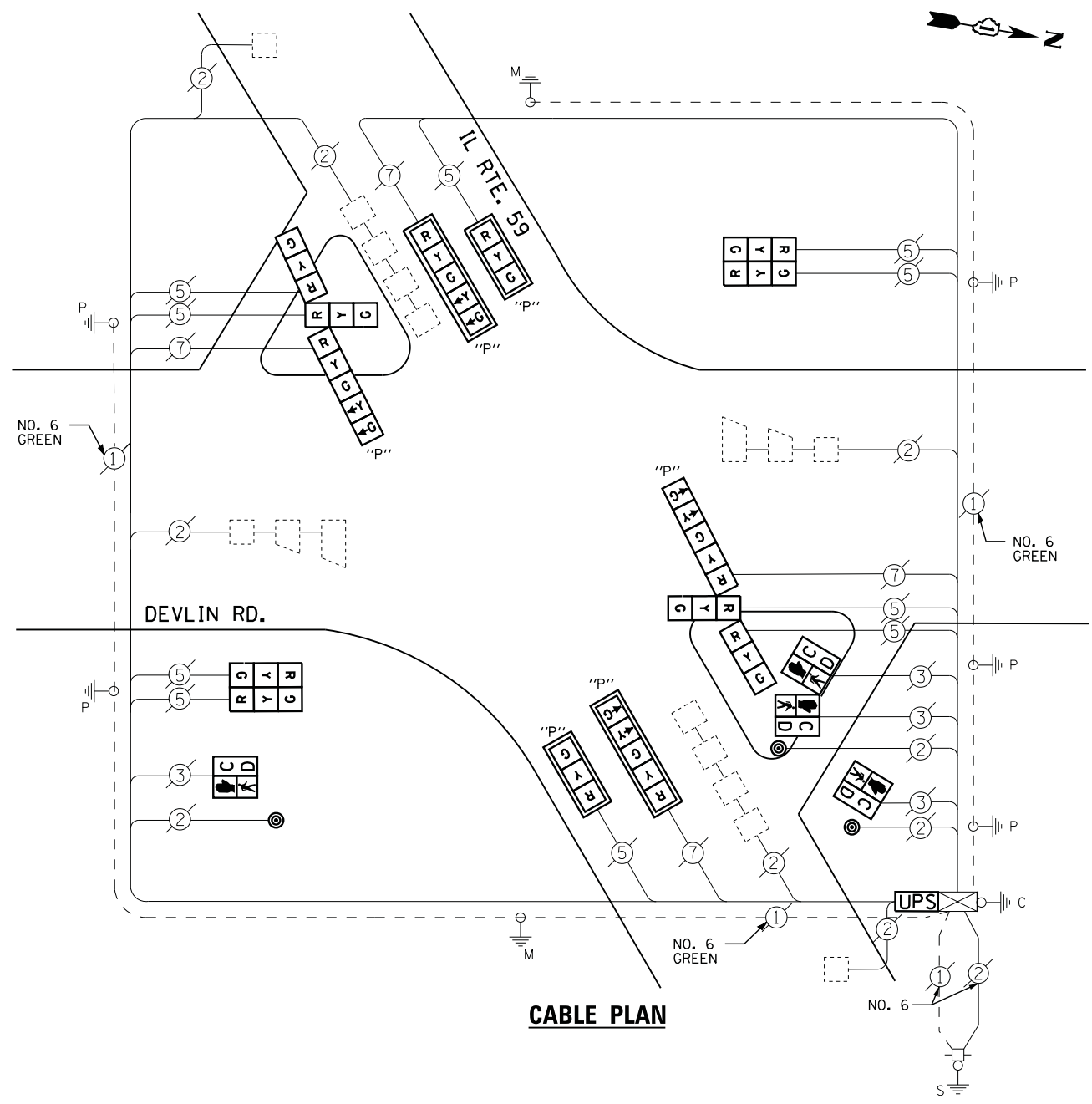
**CONTROLLER SEQUENCE**



**PHASE DESIGNATION DIAGRAM**

**LEGEND**

- ⊙\* ← PEDESTRIAN PHASE
- ⊙\* ← → PEDESTRIAN PHASE
- ⊙\* ← SINGLE ENTRY PHASE
- ⊙\* ← → OL OVERLAP
- \* NUMBER REFERS TO ASSOCIATED PHASE



**CABLE PLAN**

UPS SHALL BE INSTALLED ON LEFT SIDE OF CONTROLLER CABINET DUE TO PHYSICAL CONSTRAINT, OR AS DIRECTED BY THE ENGINEER

**REMOVAL OF EXISTING TRAFFIC SIGNAL EQUIPMENT**

THE FOLLOWING ITEMS SHALL BE REMOVED BY THE CONTRACTOR AND SHALL BE DISPOSED OF BY THEM OUTSIDE THE RIGHT-OF-WAY AT THEIR EXPENSE. THE SALVAGE VALUE OF THE REMOVED EQUIPMENT SHALL BE REFLECTED IN THE CONTRACT BID PRICE.

- 2 EACH SIGNAL HEAD, 1 - FACE, 3 - SECTION
- 2 EACH SIGNAL HEAD, 1 - FACE, 5 - SECTION
- 2 EACH SIGNAL HEAD, 2 - FACE, 2-3 SECTION
- 2 EACH SIGNAL HEAD, 3 - FACE, 2-3 SECTION, 1-5-SECTION
- 4 EACH TRAFFIC SIGNAL BACKPLATE
- 4 EACH PEDESTRIAN SIGNAL HEAD
- 3 EACH PEDESTRIAN PUSH-BUTTON

**SCHEDULE OF QUANTITIES**

QUANTITY	UNIT	ITEM
1	EACH	MAINTENANCE OF EXISTING TRAFFIC SIGNAL INSTALLATION
2	EACH	SIGNAL HEAD, LED, 2-FACE, 3-SECTION, BRACKET MOUNTED
2	EACH	OPTICALLY PROGRAMMED SIGNAL HEAD, LED, 1-FACE, 3-SECTION, MAST ARM MOUNTED
2	EACH	OPTICALLY PROGRAMMED SIGNAL HEAD, LED, 1-FACE, 5-SECTION, MAST ARM MOUNTED
2	EACH	COMBINATION SIGNAL HEAD, LED, 3-FACE, 1-5 SECTION OPTICALLY PROGRAMMED, 2-3 SECTION, BRACKET MOUNTED
2	EACH	PEDESTRIAN SIGNAL HEAD, LED, 1-FACE, BRACKET MOUNTED WITH COUNTDOWN TIMER
1	EACH	PEDESTRIAN SIGNAL HEAD, LED, 2-FACE, BRACKET MOUNTED WITH COUNTDOWN TIMER
4	EACH	TRAFFIC SIGNAL BACKPLATE, LOUVERED, ALUMINUM
3	EACH	PEDESTRIAN PUSH-BUTTON
1	EACH	MODIFY EXISTING CONTROLLER CABINET
1	EACH	REMOVE EXISTING TRAFFIC SIGNAL EQUIPMENT
1	EACH	UNINTERRUPTABLE POWER SUPPLY, SPECIAL

I. D. O. T. TRAFFIC SIGNAL INSTALLATION ELECTRICAL SERVICE REQUIREMENTS					
TYPE	NO. LAMPS	WATTAGE		% OPERATIONS	TOTAL WATTAGE
		INCAND.	LED		
SIGNAL (RED)	14	135	17	0.50	119
(YELLOW)	14	135	25	0.25	88
(GREEN)	14	135	15	0.25	53
ARROW	8	135	12	0.10	10
PED. SIGNAL	4	90	25	1.00	100
CONTROLLER	1	100	100	1.00	100
ILLUM. SIGN		252	25	0.05	--
VIDEO SYSTEM	--	150	-	1.00	--
TOTAL =					470
ENERGY COSTS- BILLED TO: VILLAGE OF FOX LAKE 66 THILLEN DRIVE FOX LAKE, IL 60020					
ENERGY SUPPLY - CONTACT TERRI BLECK PHONE 847-816-5239 COMMONWEALTH EDISON					

FILE NAME =	USER NAME = *USER*	DESIGNED - DW	REVISED -
N:\Projects\312004\Design\CAD\Sheet Files\12-004 Sheets NW Lake Co\22130.CAB.LAKE.dgn		DRAWN - JDH	REVISED -
	PLOT SCALE = *SCALE*	CHECKED - KMM	REVISED -
	PLOT DATE = 12/10/2012	DATE -	REVISED -

STATE OF ILLINOIS  
 DEPARTMENT OF TRANSPORTATION

IL ROUTE 59 AT DEVLIN ROAD SCHEDULE OF QUANTITIES, CABLE PLAN AND PHASE DESIGNATION DIAGRAM			
SCALE: N.T.S.	SHEET NO.	OF SHEETS	STA. TO STA.

F.A. RTE.	SECTION	COUNTY	TOTAL SHEETS	SHEET NO.
	2012-040TS	LAKE	60	25
CONTRACT NO. 60T85				
ILLINOIS FED. AID PROJECT				

TS# 22130  
 FOX LAKE