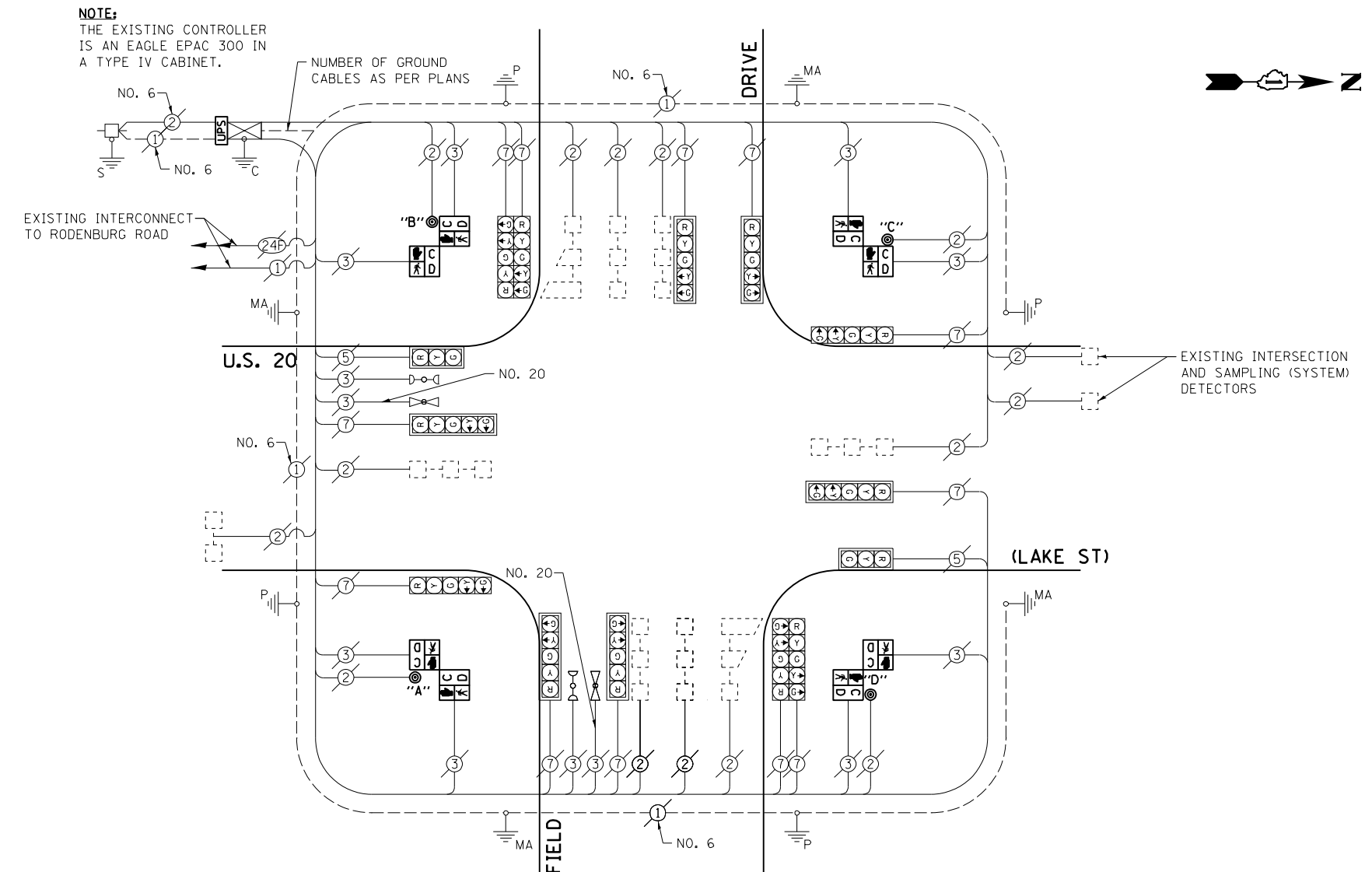


SCHEDULE OF QUANTITIES  
U. S. 20 (LAKE ST) AT SPRINGFIELD ROAD

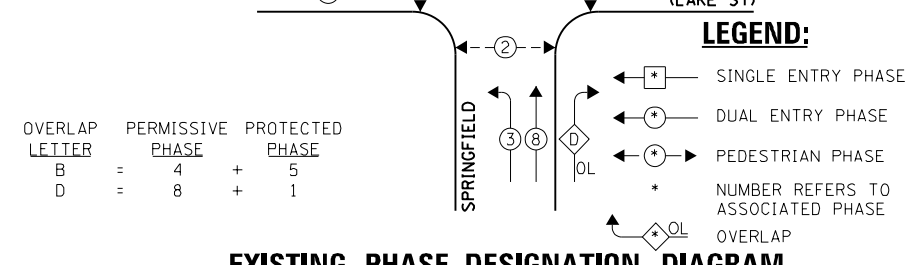
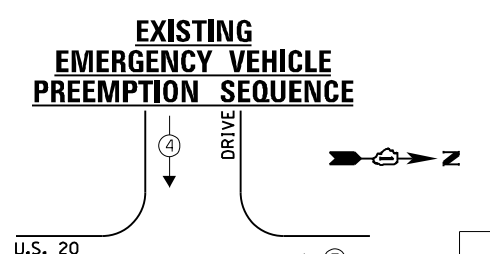
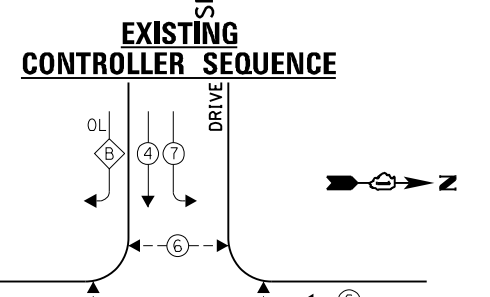
NO.	QUANT.	UNIT	DESCRIPTION
1.	1	EACH	MAINTENANCE OF EXISTING TRAFFIC SIGNAL INSTALLATION
2.	4	EACH	PEDESTRIAN SIGNAL HEAD, LED, 2-FACE, BRACKET MOUNTED WITH COUNTDOWN TIMER
3.	1	EACH	MODIFY EXISTING CONTROLLER CABINET
4.	1	EACH	REMOVE EXISTING TRAFFIC SIGNAL EQUIPMENT
5.	1	EACH	UNINTERRUPTABLE POWER SUPPLY, SPECIAL
6.	4	EACH	PEDESTRIAN PUSH-BUTTON, NON-LATCHING



THE FOLLOWING ITEMS SHALL BE REMOVED BY THE CONTRACTOR AND SHALL BE DISPOSED OF BY THEM OUTSIDE THE RIGHT-OF-WAY AT THEIR EXPENSE. THE SALVAGE VALUE OF THE REMOVED EQUIPMENT SHALL BE REFLECTED IN THE CONTRACT BID PRICE.

- 4 EACH PEDESTRIAN SIGNAL HEAD, 2-FACE
- 4 EACH PEDESTRIAN PUSH-BUTTON

**NOTE:**  
PUSH BUTTON "A" SHALL PLACE A CALL IN PHASES 2 AND 4.  
PUSH BUTTON "B" SHALL PLACE A CALL IN PHASES 4 AND 6.  
PUSH BUTTON "C" SHALL PLACE A CALL IN PHASES 6 AND 8.  
PUSH BUTTON "D" SHALL PLACE A CALL IN PHASES 8 AND 2.



EXISTING EMERGENCY VEHICLE PREEMPTORS	
EMERGENCY VEHICLE PREEMPTOR	3
MOVEMENT	4

I.D.O.T. TRAFFIC SIGNAL INSTALLATION ELECTRICAL SERVICE REQUIREMENTS				TOTAL WATTAGE
TYPE	NO. LAMPS	WATTAGE INCAND. L.E.D.	OPERATION	
SIGNAL (RED)	14	135 17	0.50	119.0
SIGNAL (YELLOW)	14	135 25	0.25	87.5
SIGNAL (GREEN)	14	135 15	0.25	52.5
ARROW	24	135 12	0.10	28.8
PED. SIGNAL	8	90 25	1.00	200.0
CONTROLLER	1	- 100	1.00	100.0
LUMINAIRE	-	- 250	0.50	-
L.E.D. ST. NAME SIGN	-	- 64	0.50	-
VIDEO SYSTEM	-	- 150	1.00	-
BATTERY BACKUP	1	- 25	1.00	25.0
ILLUMINATED SIGN	-	- 25	0.05	-
TOTAL =				612.8

ENERGY COSTS - BILLED TO: IL DEPT. OF TRANSPORTATION  
(ADDRESS) 201 W. CENTER COURT  
(ADDRESS) SCHALMBURG, IL 60196-1096  
ENERGY SUPPLY - CONTACT: JOE STACHO  
PHONE: (630) 424-5704  
COMPANY: CQM-ED

FILE NAME = 60V80-084-ts.dgn	USER NAME = zwallsten	DESIGNED - JRD	REVISED -
Default	PLOT SCALE = 1:20	DRAWN - JPW	REVISED -
	PLOT DATE = 12/20/2012	CHECKED - KLB	REVISED -
		DATE - 12-20-12	REVISED -

STATE OF ILLINOIS  
DEPARTMENT OF TRANSPORTATION

SCHEDULE OF QUANTITIES, CABLE PLAN, PHASE DESIGNATION DIAGRAM, & EMERGENCY VEHICLE PREEMPTION SEQUENCE  
U.S. 20 (LAKE STREET) AT SPRINGFIELD DRIVE  
SCALE: NONE SHEET OF SHEETS STA. TO STA.

F.A. RTE. VARIES	SECTION 2012-070 I	COUNTY DuPAGE	TOTAL SHEETS 103	SHEET NO. 84
ILLINOIS FED. AID PROJECT			CONTRACT NO. 60V80	

GHA #4085.887