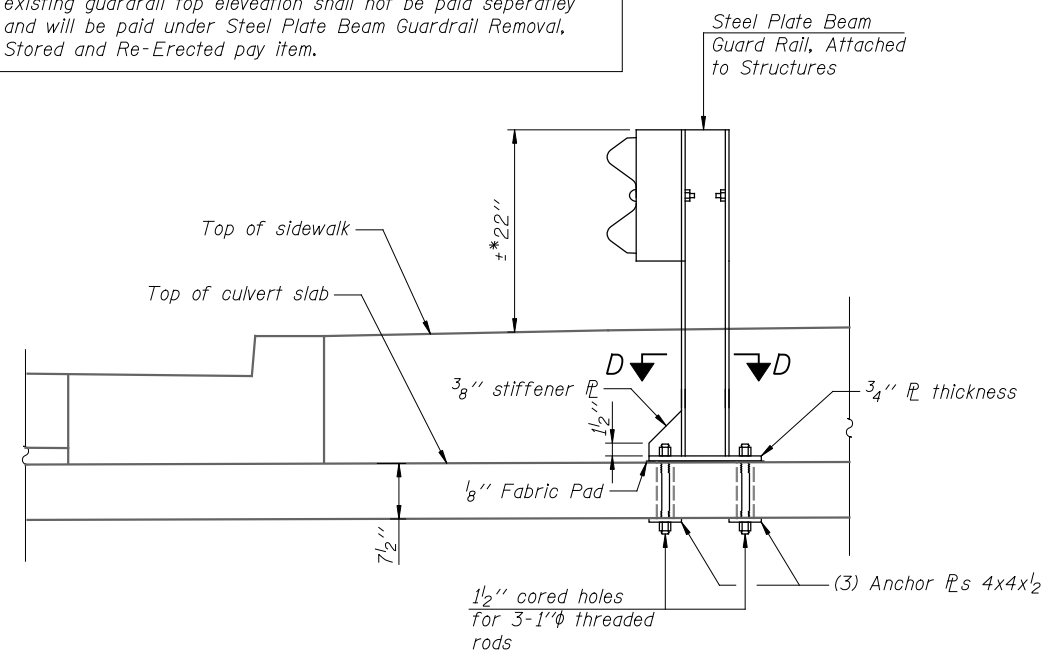


SECTION THRU BARREL

MINIMUM BAR LAPS

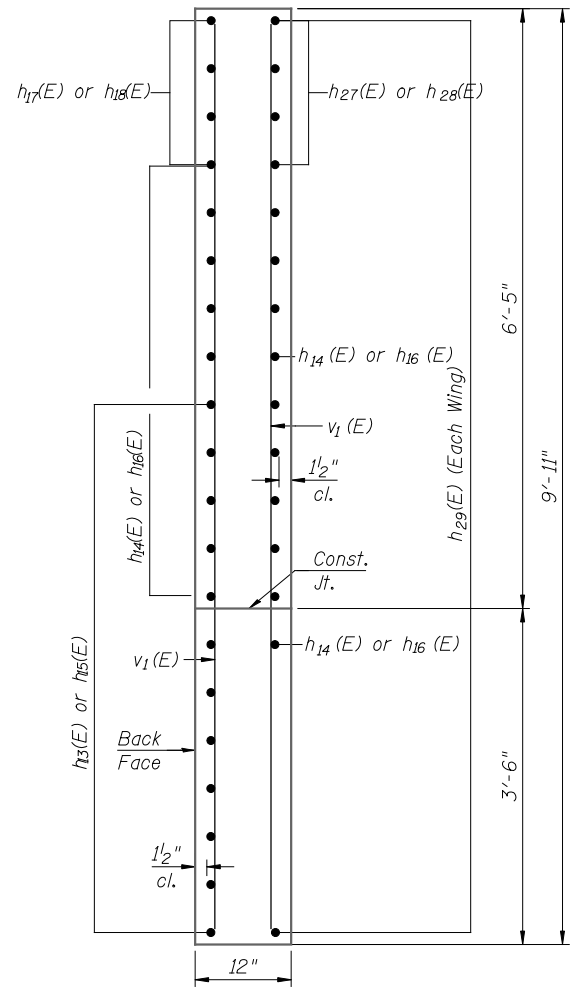
#4 Bar	1'-9"
#5 Bar	2'-2"
#6 Bar	2'-7"
#7 Bar	3'-5"
#8 Bar	4'-6"

Cost for Steel Plate Beam Guardrail Post connection to the top slab modification or replacement in kind to meet the top of existing guardrail top elevation shall not be paid separately and will be paid under Steel Plate Beam Guardrail Removal, Stored and Re-Erected pay item.

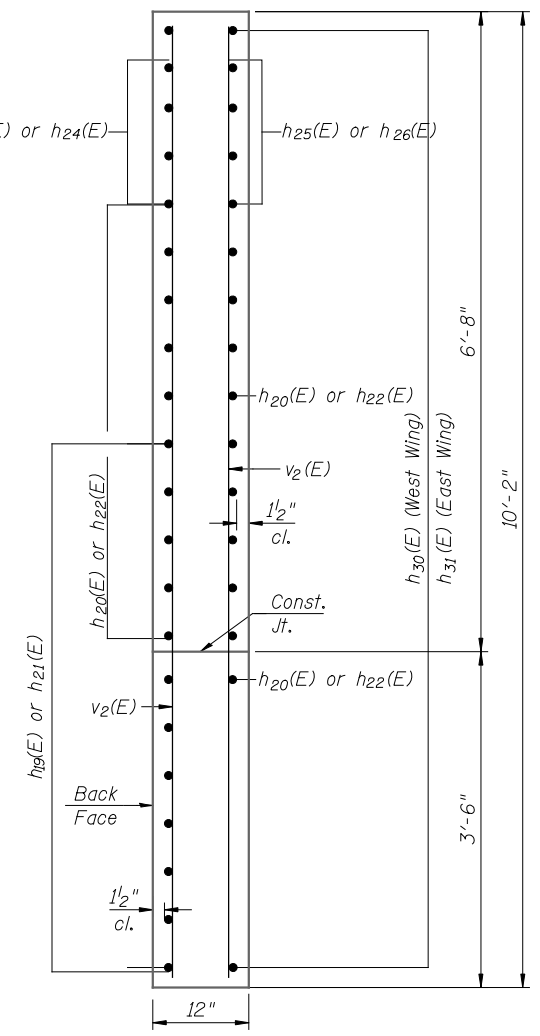


STEEL PLATE BEAM GUARD RAIL ATTACHED TO STRUCTURES

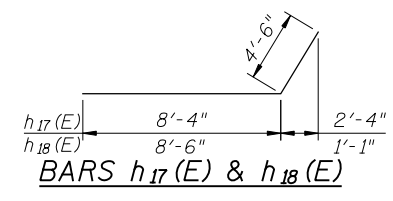
(Section shown at South end)



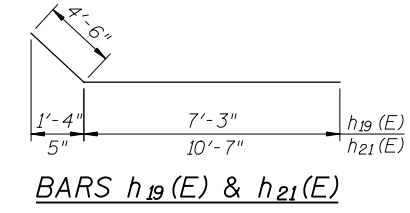
SECTION A-A



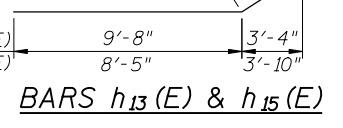
SECTION B-B



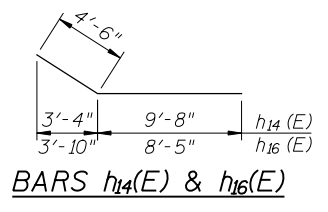
BARS h17(E) & h18(E)



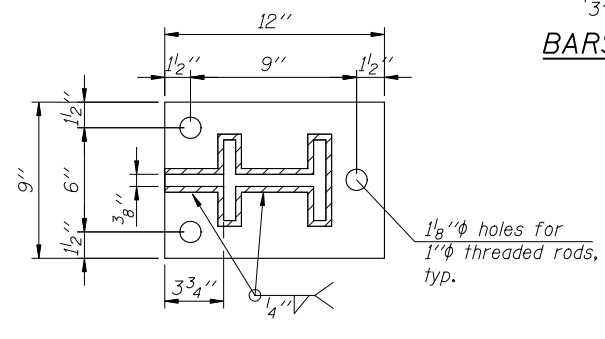
BARS h19(E) & h21(E)



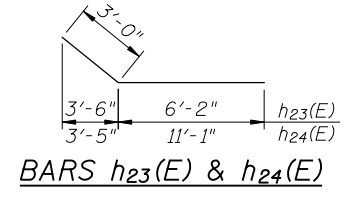
BARS h13(E) & h15(E)



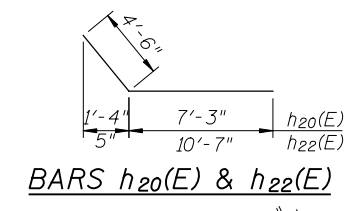
BARS h14(E) & h16(E)



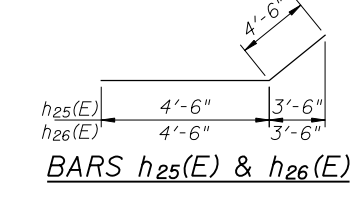
SECTION D-D



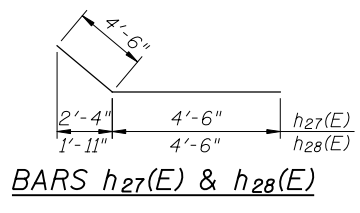
BARS h23(E) & h24(E)



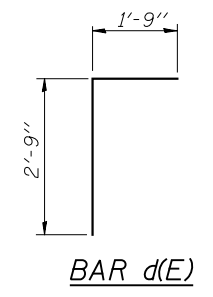
BARS h20(E) & h22(E)



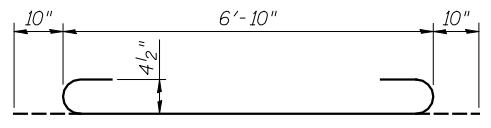
BARS h25(E) & h26(E)



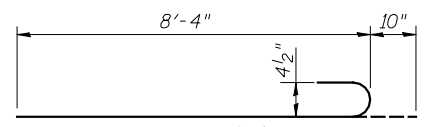
BARS h27(E) & h28(E)



BAR d(E)



BAR a1(E)



BAR a4(E)

BILL OF MATERIAL

Bar	No.	Size	Length	Shape
a1(E)	452	#7	8'-6"	U
a2(E)	60	#4	6'-9"	—
a3(E)	77	#5	6'-9"	—
a4(E)	56	#7	9'-2"	U
a5(E)	8	#4	8'-0"	—
a6(E)	10	#5	8'-0"	—
a7(E)	28	#7	7'-4"	—
d(E)	16	#4	4'-6"	L
h(E)	24	#7	29'-6"	—
h1(E)	48	#4	28'-6"	—
h2(E)	24	#4	28'-6"	—
h3(E)	16	#7	25'-11"	—
h4(E)	32	#4	25'-1"	—
h5(E)	16	#4	25'-1"	—
h6(E)	12	#5	28'-10"	—
h7(E)	12	#5	25'-10"	—
h8(E)	16	#5	25'-3"	—
h9(E)	9	#6	7'-8"	—
h10(E)	4	#5	7'-8"	—
h11(E)	29	#6	8'-0"	—
h12(E)	6	#5	8'-0"	—
h13(E)	12	#8	14'-2"	—
h14(E)	12	#8	14'-2"	—
h15(E)	12	#8	12'-11"	—
h16(E)	12	#8	12'-11"	—
h17(E)	4	#8	12'-10"	—
h18(E)	4	#8	13'-0"	—
h19(E)	12	#8	11'-9"	—
h20(E)	12	#8	11'-9"	—
h21(E)	12	#8	15'-1"	—
h22(E)	12	#8	15'-1"	—
h23(E)	4	#8	10'-8"	—
h24(E)	4	#8	15'-7"	—
h25(E)	4	#8	9'-0"	—
h26(E)	4	#8	9'-0"	—
h27(E)	4	#8	9'-0"	—
h28(E)	4	#8	9'-0"	—
h29(E)	22	#4	8'-6"	—
h30(E)	11	#4	6'-6"	—
h31(E)	11	#4	10'-6"	—
s(E)	9	#4	7'-5"	U
s1(E)	10	#4	7'-11"	U
s2(E)	20	#4	4'-1"	U
s3(E)	20	#4	4'-11"	U
v(E)	348	#5	5'-5"	—
v1(E)	36	#4	9'-7"	—
v2(E)	38	#4	9'-10"	—
Reinforcement Bars, Epoxy Coated		Pound	23,730	
Concrete Box Culverts		Cu. Yd.	98.1	