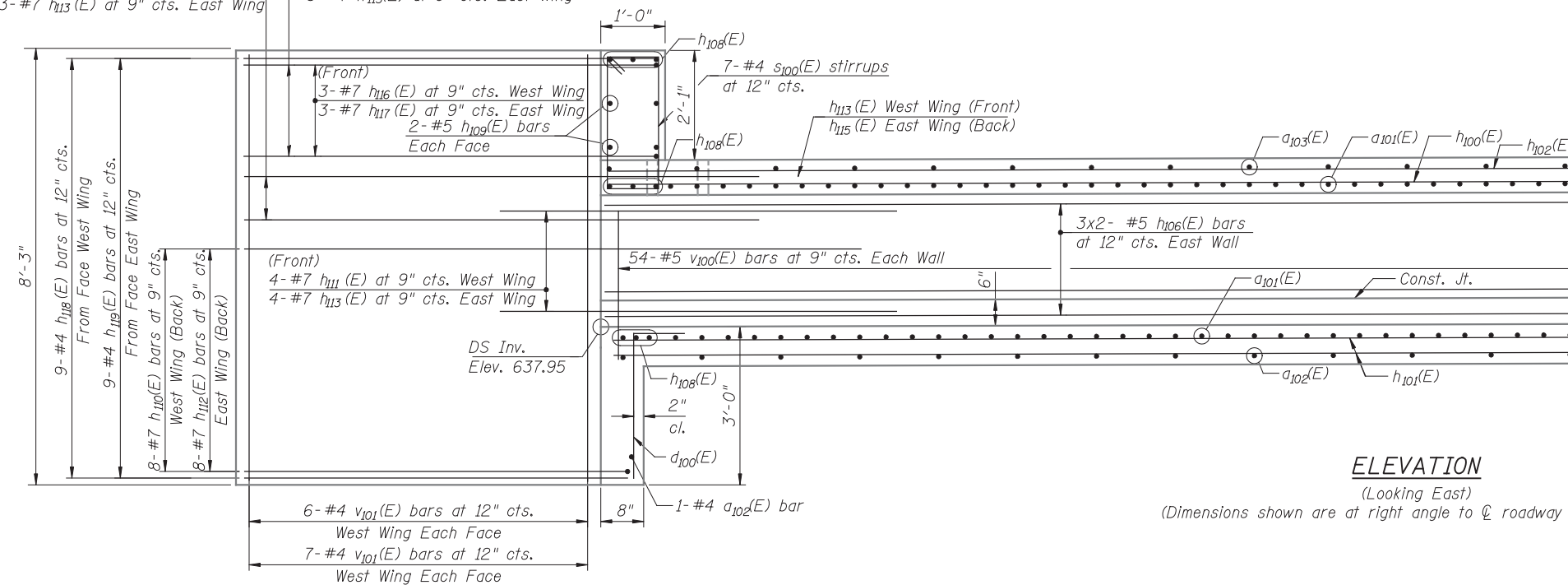


(Back)
 3-#7 h₁₁₁(E) at 9" cts. West Wing
 3-#7 h₁₁₃(E) at 9" cts. East Wing

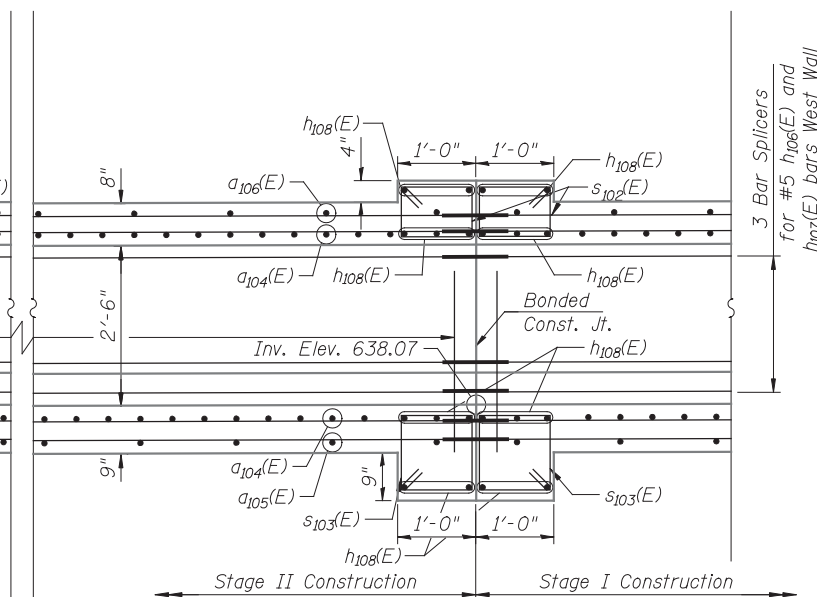
(Back)
 3-#7 h₁₁₄(E) at 9" cts. West Wing
 3-#7 h₁₁₅(E) at 9" cts. East Wing



ELEVATION

(Looking East)

(Dimensions shown are at right angle to ϕ roadway unless noted)

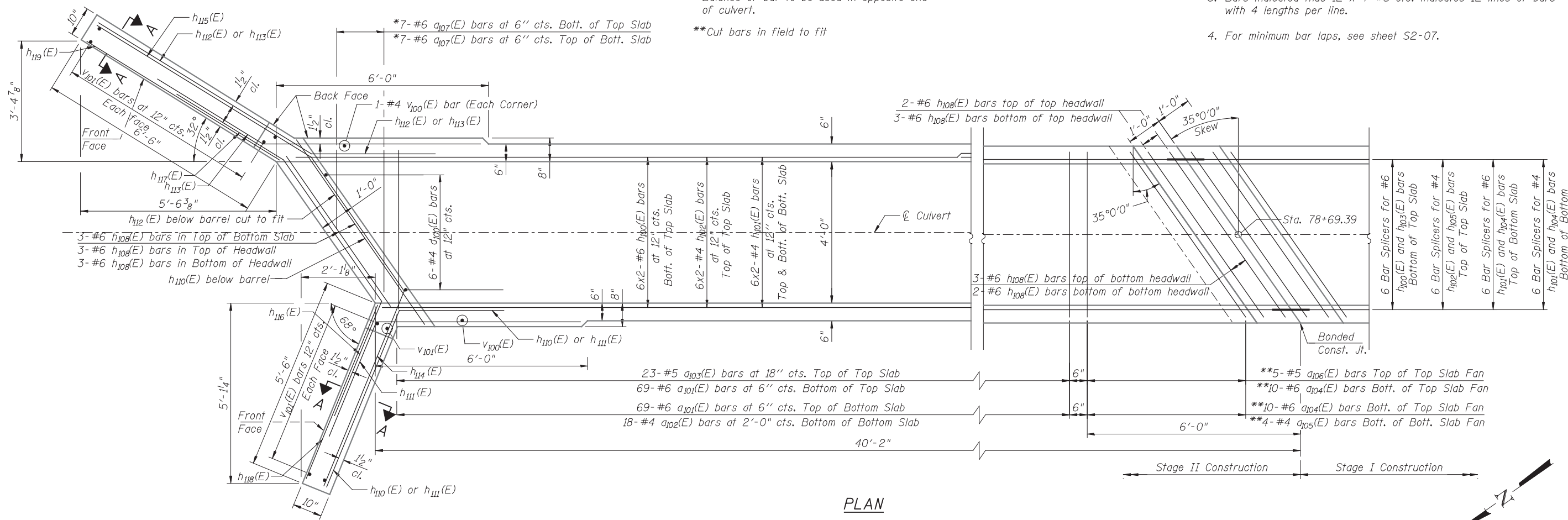


NOTES

1. A distance of half the length of the wingwall but not less than six feet of the barrel shall be poured monolithically with the wingwalls.
2. Reinforcement bars designated (E) shall be epoxy coated.
3. Bars indicated thus 12 x 4-#5 etc. indicates 12 lines of bars with 4 lengths per line.
4. For minimum bar laps, see sheet S2-07.

* a₁₀₇ bars in skew portion at north end of slab shall be ordered full length and cut to fit. Balance of bar to be used in opposite end of culvert.

** Cut bars in field to fit



PLAN

DESIGNED - MI, LAB	REVISED -
CHECKED - MI	REVISED -
DRAWN - WM, AI	REVISED -
CHECKED - MAI, MI	REVISED -

F.A.P. RTE.	SECTION	COUNTY	TOTAL SHEETS	SHEET NO.
305	1920.01-B-R	COOK	60	41
CONTRACT NO. 60W04				
ILLINOIS FED. AID PROJECT				

