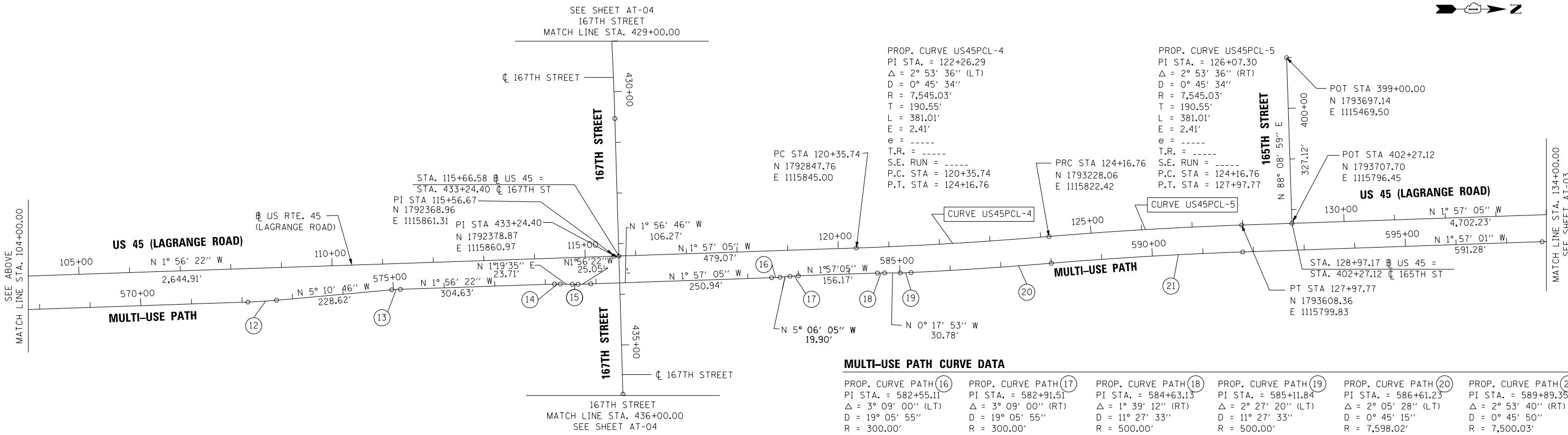
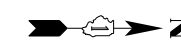


SEE SHEET AT-01
MATCH LINE STA. 74+00.00

MATCH LINE STA. 104+00.00
SEE BELOW

MULTI-USE PATH CURVE DATA

PROP. CURVE PATH (12)	PROP. CURVE PATH (13)	PROP. CURVE PATH (14)	PROP. CURVE PATH (15)
PI STA. = 572+39.61	PI STA. = 575+04.98	PI STA. = 578+23.80	PI STA. = 578+58.90
$\Delta = 3^\circ 14' 24''$ (LT)	$\Delta = 3^\circ 14' 24''$ (RT)	$\Delta = 3^\circ 15' 56''$ (RT)	$\Delta = 3^\circ 15' 56''$ (LT)
D = 5° 43' 46"	D = 19° 05' 55"	D = 28° 38' 52"	D = 28° 38' 52"
R = 1,000.00'	R = 300.00'	R = 200.00'	R = 200.00'
T = 28.28'	T = 8.48'	T = 5.70'	T = 5.70'
L = 56.55'	L = 16.97'	L = 11.40'	L = 11.40'
E = 0.40'	E = 0.12'	E = 0.08'	E = 0.08'
e = -----	e = -----	e = -----	e = -----
T.R. = -----	T.R. = -----	T.R. = -----	T.R. = -----
S.E. RUN = -----	S.E. RUN = -----	S.E. RUN = -----	S.E. RUN = -----
P.C. STA = 572+11.33	P.C. STA = 574+96.50	P.C. STA = 578+18.10	P.C. STA = 578+53.20
P.T. STA = 572+67.88	P.T. STA = 575+13.46	P.T. STA = 578+29.49	P.T. STA = 578+64.60



SEE ABOVE
MATCH LINE STA. 104+00.00

MATCH LINE STA. 134+00.00
SEE SHEET AT-03

MULTI-USE PATH CURVE DATA

PROP. CURVE PATH (16)	PROP. CURVE PATH (17)	PROP. CURVE PATH (18)	PROP. CURVE PATH (19)	PROP. CURVE PATH (20)	PROP. CURVE PATH (21)
PI STA. = 582+55.11	PI STA. = 582+91.51	PI STA. = 584+63.13	PI STA. = 585+11.84	PI STA. = 586+61.23	PI STA. = 589+89.35
$\Delta = 3^\circ 09' 00''$ (LT)	$\Delta = 3^\circ 09' 00''$ (RT)	$\Delta = 1^\circ 39' 12''$ (RT)	$\Delta = 2^\circ 27' 20''$ (LT)	$\Delta = 2^\circ 05' 28''$ (LT)	$\Delta = 2^\circ 53' 40''$ (RT)
D = 19° 05' 55"	D = 19° 05' 55"	D = 11° 27' 33"	D = 11° 27' 33"	D = 0° 45' 15"	D = 0° 45' 50"
R = 300.00'	R = 300.00'	R = 500.00'	R = 500.00'	R = 7,598.02'	R = 7,500.03'
T = 8.25'	T = 8.25'	T = 7.21'	T = 10.72'	T = 138.68'	T = 189.48'
L = 16.49'	L = 16.49'	L = 14.43'	L = 21.43'	L = 277.32'	L = 378.87'
E = 0.11'	E = 0.11'	E = 0.05'	E = 0.11'	E = 1.27'	E = 2.39'
e = -----	e = -----	e = -----	e = -----	e = -----	e = -----
T.R. = -----	T.R. = -----	T.R. = -----	T.R. = -----	T.R. = -----	T.R. = -----
S.E. RUN = -----	S.E. RUN = -----	S.E. RUN = -----	S.E. RUN = -----	S.E. RUN = -----	S.E. RUN = -----
P.C. STA = 582+46.86	P.C. STA = 582+83.26	P.C. STA = 584+55.92	P.C. STA = 585+01.13	P.C. STA = 585+22.55	P.C. STA = 587+99.88
P.T. STA = 582+63.36	P.T. STA = 582+99.75	P.T. STA = 584+70.35	P.T. STA = 585+22.55	P.T. STA = 587+99.88	P.T. STA = 591+78.75

100 S. WACKER DR.
SUITE 500
CHICAGO, IL 60606
TEL (312) 939-1000
FAX (312) 939-4198



FILE NAME =	USER NAME = Frank.Stallone	DESIGNED - BA	REVISED -
D160W07-SHT-AT02.dgn		DRAWN - BA	REVISED -
	PLOT SCALE = 200.0000' / in.	CHECKED -	REVISED -
SHT.PLAN	PLOT DATE = 1/7/2013	DATE - 01/02/13	REVISED -

**STATE OF ILLINOIS
DEPARTMENT OF TRANSPORTATION**

**ALIGNMENT, TIES AND BENCHMARKS
US 45 (LAGRANGE ROAD)**

SCALE: 1"=100' SHEET 2 OF 7 SHEETS STA. TO STA.

F.A.P. RTE.	SECTION	COUNTY	TOTAL SHEETS	SHEET NO.
330	2012-0861	COOK	98	10
AT-02			CONTRACT NO. 60W07	
ILLINOIS FED. AID PROJECT				