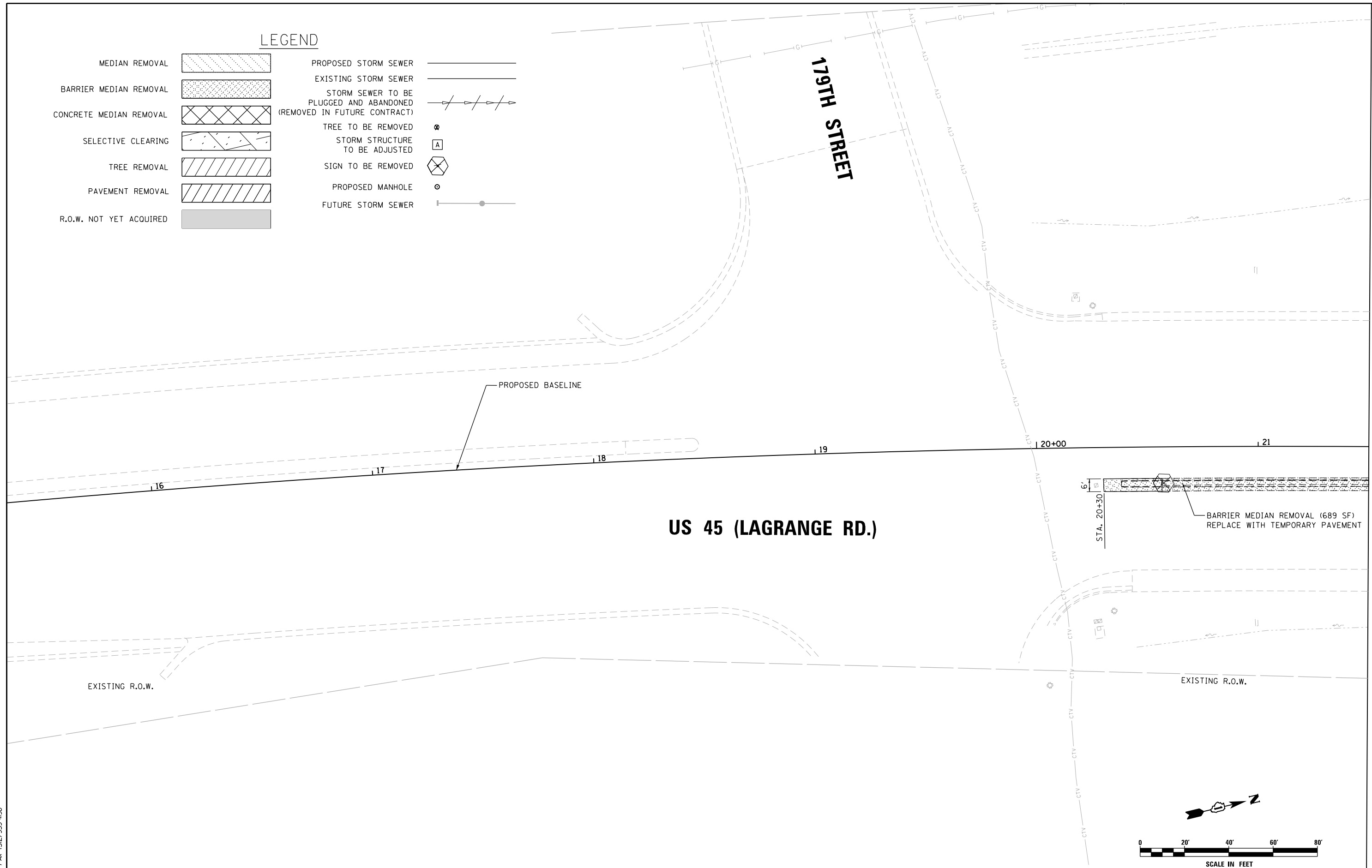


LEGEND

- | | | | |
|-------------------------|--|--|--|
| MEDIAN REMOVAL | | PROPOSED STORM SEWER | |
| BARRIER MEDIAN REMOVAL | | EXISTING STORM SEWER | |
| CONCRETE MEDIAN REMOVAL | | STORM SEWER TO BE PLUGGED AND ABANDONED (REMOVED IN FUTURE CONTRACT) | |
| SELECTIVE CLEARING | | TREE TO BE REMOVED | |
| TREE REMOVAL | | STORM STRUCTURE TO BE ADJUSTED | |
| PAVEMENT REMOVAL | | SIGN TO BE REMOVED | |
| R.O.W. NOT YET ACQUIRED | | PROPOSED MANHOLE | |
| | | FUTURE STORM SEWER | |



MATCH LINE STA. 21+50.00
SEE SHEET P-01

URS
100 S. WACKER DR.
SUITE 600
CHICAGO, IL 60606
TEL (312) 939-1000
FAX (312) 939-4998

FILE NAME = D160W07-SHT-PLAN01.dgn	USER NAME = Frank.Stallone	DESIGNED - MGS	REVISED -
SHT_PLAN	PLOT SCALE = 40.00' / in.	DRAWN - REW	REVISED -
	PLOT DATE = 1/7/2013	CHECKED - JRS	REVISED -
		DATE - 01/02/13	REVISED -

**STATE OF ILLINOIS
DEPARTMENT OF TRANSPORTATION**

REMOVAL, TEMPORARY PAVEMENT, AND DRAINAGE PLAN

SCALE: 1"=20' SHEET 1 OF 26 SHEETS STA. BEGIN TO STA. 21+50.00

F.A.P. RTE.	SECTION	COUNTY	TOTAL SHEETS	SHEET NO.
330	2012-0861	COOK	98	16
P-01			CONTRACT NO. 60W07	
ILLINOIS FED. AID PROJECT				