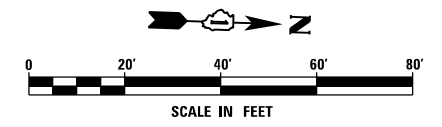
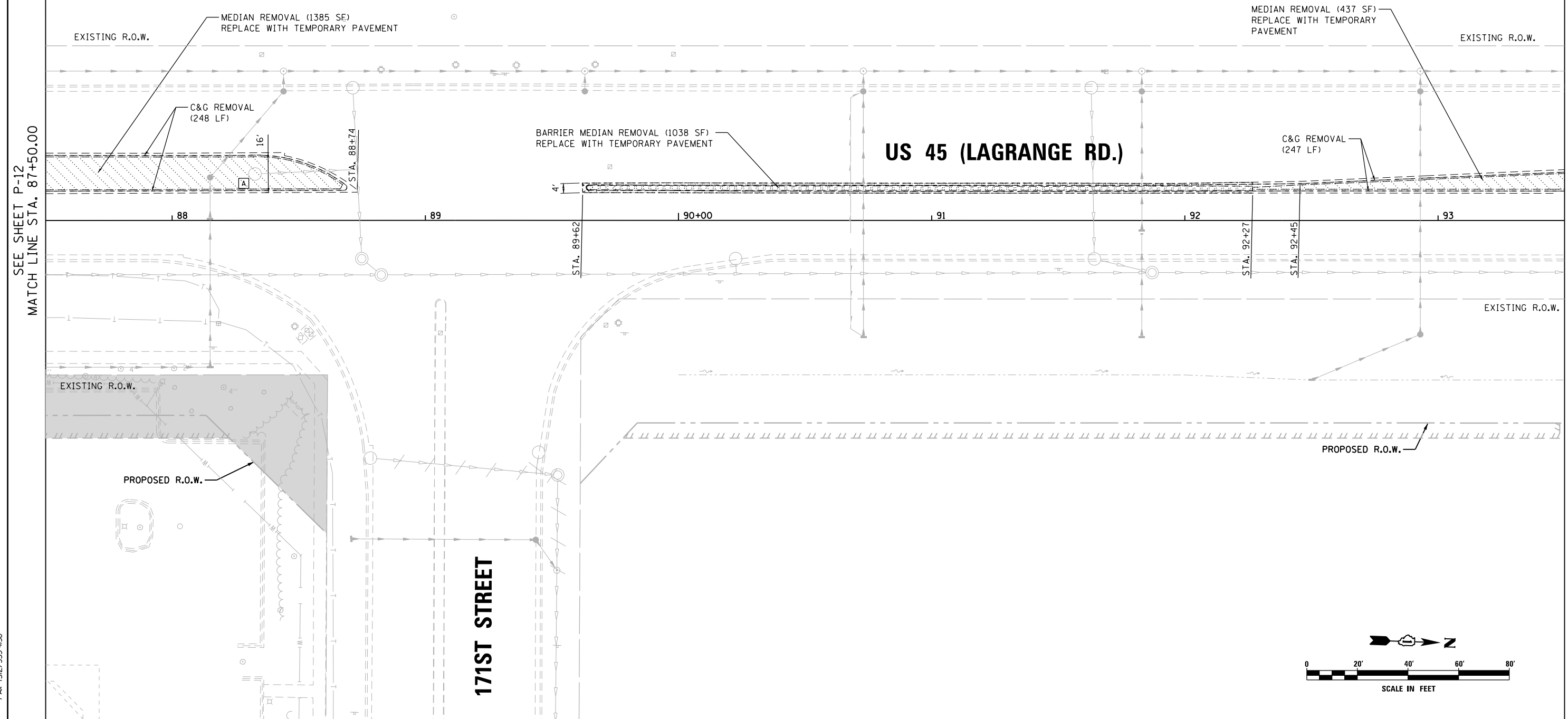


**LEGEND**

- |                         |  |  |  |
|-------------------------|--|--|--|
| MEDIAN REMOVAL          |  | PROPOSED STORM SEWER   |  |
| BARRIER MEDIAN REMOVAL  |  | EXISTING STORM SEWER   |  |
| CONCRETE MEDIAN REMOVAL |  | STORM SEWER TO BE PLUGGED AND ABANDONED (REMOVED IN FUTURE CONTRACT) |  |
| SELECTIVE CLEARING      |  | TREE TO BE REMOVED   |  |
| TREE REMOVAL            |  | STORM STRUCTURE TO BE ADJUSTED                                       |  |
| PAVEMENT REMOVAL        |  | SIGN TO BE REMOVED   |  |
| R.O.W. NOT YET ACQUIRED |  | PROPOSED MANHOLE   |  |
|                         |  | FUTURE STORM SEWER   |  |

SEE SHEET P-12  
MATCH LINE STA. 87+50.00

MATCH LINE STA. 93+50.00  
SEE SHEET P-14



**URS**  
100 S. WACKER DR.  
SUITE 600  
CHICAGO, IL 60606  
TEL (312) 935-1000  
FAX (312) 935-4998

|                                    |                            |                 |           |
|------------------------------------|----------------------------|-----------------|-----------|
| FILE NAME = D:\6007-SHT-PLAN13.dgn | USER NAME = Frank.Stallone | DESIGNED - MGS  | REVISED - |
| SHT.PLAN                           |                            | DRAWN - REW     | REVISED - |
|                                    |                            | CHECKED - JRS   | REVISED - |
|                                    |                            | DATE - 01/02/13 | REVISED - |

**STATE OF ILLINOIS**  
**DEPARTMENT OF TRANSPORTATION**

**REMOVAL, TEMPORARY PAVEMENT, AND DRAINAGE PLAN**

SCALE: 1"=20' SHEET 13 OF 26 SHEETS STA. 87+50.00 TO STA. 93+50.00

|                           |                   |                    |                 |              |
|---------------------------|-------------------|--------------------|-----------------|--------------|
| F.A.P. RTE. 330           | SECTION 2012-0861 | COUNTY COOK        | TOTAL SHEETS 98 | SHEET NO. 28 |
| <b>P-13</b>               |                   | CONTRACT NO. 60W07 |                 |              |
| ILLINOIS FED. AID PROJECT |                   |                    |                 |              |