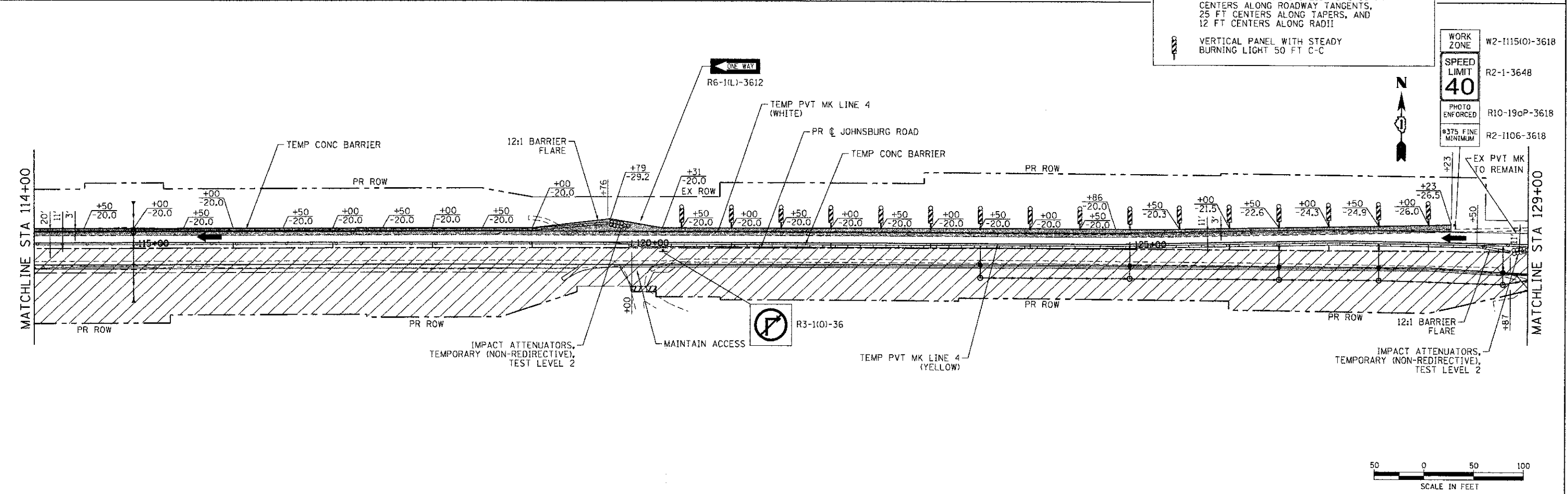


LEGEND:

- WORK ZONE
- TEMPORARY PAVEMENT
- DIRECTION OF TRAFFIC
- TYPE III BARRICADE W/TWO(2) FLASHING LIGHTS
- TEMPORARY CONCRETE BARRIER
- MAINTENANCE OF TRAFFIC SIGN
- TYPE II BARRICADES OR DRUMS WITH STEADY BURNING LIGHTS @ 50 FT CENTERS ALONG ROADWAY TANGENTS, 25 FT CENTERS ALONG TAPERS, AND 12 FT CENTERS ALONG RADII
- VERTICAL PANEL WITH STEADY BURNING LIGHT 50 FT C-C

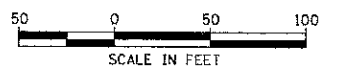


WORK ZONE W2-1115(0)-3618

SPEED LIMIT 40 R2-1-3648

PHOTO ENFORCED R10-19aP-3618

375 FINE MINIMUM R2-1106-3618



COMPANY NAME: HRGreen
 PROJECT CONTACT: jettens
 CLIENT: MCHENRY COUNTY
 DATE PLOTTED: 12/20/2012 8:05 AM
 FILE NAME: 080622-motl-01.dgn
 PLOT DRIVER: pcf.dft
 PEN TABLE: s1ender.ctb

HRGreen.com Wingo Professional Design Firm #184-091322	USER NAME = jettens	DESIGNED -	REVISED -	MCHENRY COUNTY DIVISION OF TRANSPORTATION	SUGGESTED MAINTENANCE OF TRAFFIC - STAGE 1 JOHNSBURG ROAD		F.A.U. RTE. 168	SECTION 05-00314-00-WR	COUNTY MCHENRY	TOTAL SHEETS 187	SHEET NO. 28
	FILE NAME = 080622-motl-01.dgn	DRAWN - TH	REVISI		REVISI	SCALE: 1" = 50'	SHEET NO. 5 OF 10 SHEETS	STA. TO STA.	CONTRACT NO. 63515		FED. ROAD DIST. NO. ILLINOIS FED. AID PROJECT
	PLOT SCALE = 1" = 50'	CHECKED - TH	REVISI								
	PLOT DATE = 12/28/2012	DATE = 12/19/12	REVISI								