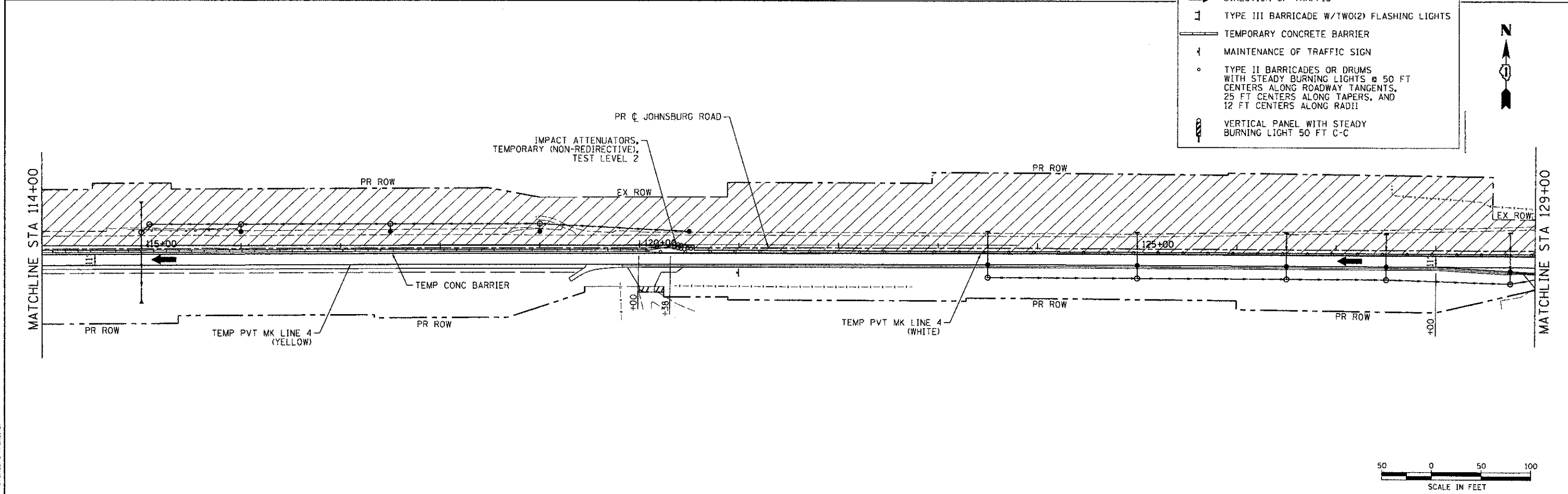


LEGEND:

- WORK ZONE
- TEMPORARY PAVEMENT
- DIRECTION OF TRAFFIC
- TYPE III BARRICADE W/TWO(2) FLASHING LIGHTS
- TEMPORARY CONCRETE BARRIER
- MAINTENANCE OF TRAFFIC SIGN
- TYPE II BARRICADES OR DRUMS WITH STEADY BURNING LIGHTS @ 50 FT CENTERS ALONG ROADWAY TANGENTS, 25 FT CENTERS ALONG TAPERS, AND 12 FT CENTERS ALONG RADII
- VERTICAL PANEL WITH STEADY BURNING LIGHT 50 FT C-C



COMPANY NAME: HRGreen
 PROJECT CONTACT: jettiana
 CLIENT: MCHENRY COUNTY
 DATE PLOTTED: 12/19/2012 2:27:35 PM
 FILE NAME: 088622-mot2-01.dgn
 PLOT DRIVER: pdf.plt
 PEN TABLE: standard-trans.tbl



USER NAME = jettiana	DESIGNED -	REVISED -
FILE NAME = 088622-mot2-01.dgn	DRAWN -	REVISED -
PLOT SCALE = 1" = 50'	CHECKED - TH	REVISED -
PLOT DATE = 12/19/2012	DATE - 12/19/12	REVISED -

**MCHENRY COUNTY
 DIVISION OF TRANSPORTATION**

**SUGGESTED MAINTENANCE OF TRAFFIC - STAGE 2
 JOHNSBURG ROAD**

SCALE: 1" = 50' SHEET NO. 8 OF 10 SHEETS STA. TO STA.

F.A.U. RTE.	SECTION	COUNTY	TOTAL SHEETS	SHEET NO.
168	05-00314-00-WR	MCHENRY	187	31

CONTRACT NO. 63515
 FED. ROAD DIST. NO. ILLINOIS FED. AID PROJECT