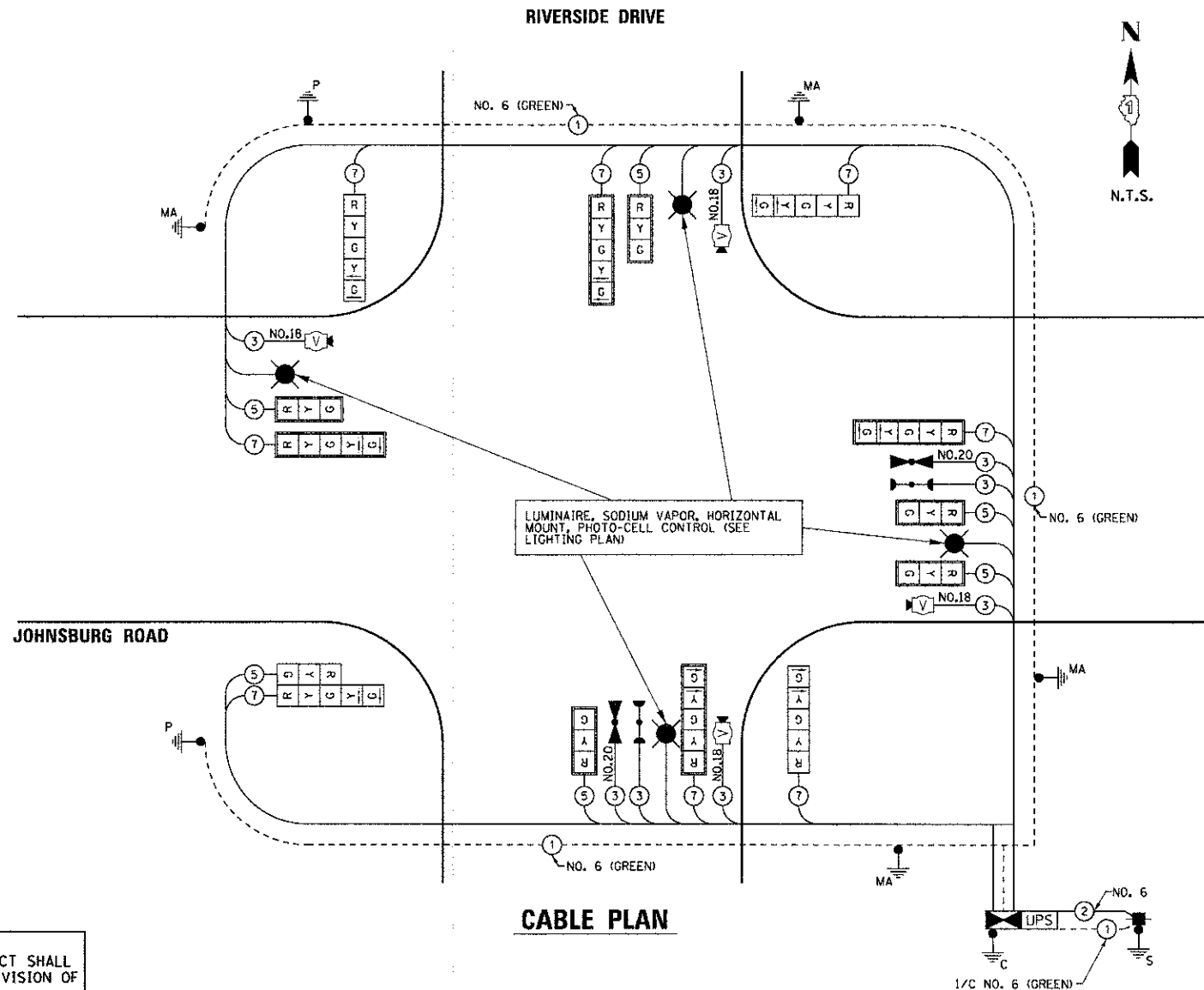


**SCHEDULE OF QUANTITIES**

ITEM	UNIT	TOTAL
SIGN PANEL - TYPE 1	SQ FT	18.0
SIGN PANEL - TYPE 2	SQ FT	19.5
SERVICE INSTALLATION - POLE MOUNTED	EACH	1
UNDERGROUND CONDUIT, GALVANIZED STEEL, 2" DIA.	FOOT	26.0
UNDERGROUND CONDUIT, GALVANIZED STEEL, 2 1/2" DIA.	FOOT	33.0
UNDERGROUND CONDUIT, GALVANIZED STEEL, 3" DIA.	FOOT	64.0
UNDERGROUND CONDUIT, GALVANIZED STEEL, 4" DIA.	FOOT	424.0
HANDHOLE	EACH	2
DOUBLE HANDHOLE	EACH	2
ELECTRIC CABLE IN CONDUIT, SIGNAL NO. 14 3C	FOOT	235.0
ELECTRIC CABLE IN CONDUIT, SIGNAL NO. 14 5C	FOOT	1,013.0
ELECTRIC CABLE IN CONDUIT, SIGNAL NO. 14 7C	FOOT	1,450.0
ELECTRIC CABLE IN CONDUIT, SIGNAL NO. 18 3C	FOOT	733.0
ELECTRIC CABLE IN CONDUIT, SERVICE NO. 6 2C	FOOT	63.0
ELECTRIC CABLE IN CONDUIT, EQUIPMENT GROUNDING CONDUCTOR, NO. 6 1C	FOOT	896.5
TRAFFIC SIGNAL POST, GALVANIZED STEEL 16 FT.	EACH	2
STEEL COMBINATION MAST ARM ASSEMBLY AND POLE 28 FT.	EACH	1
STEEL COMBINATION MAST ARM ASSEMBLY AND POLE 34 FT.	EACH	1
STEEL COMBINATION MAST ARM ASSEMBLY AND POLE 36 FT.	EACH	1
STEEL COMBINATION MAST ARM ASSEMBLY AND POLE 44 FT.	EACH	1
CONCRETE FOUNDATION, TYPE A	FOOT	8.0
CONCRETE FOUNDATION, TYPE C	FOOT	4.0
CONCRETE FOUNDATION, TYPE E 30-INCH DIAMETER	FOOT	10.0
CONCRETE FOUNDATION, TYPE E 36-INCH DIAMETER	FOOT	35.0
SIGNAL HEAD, LED, 1-FACE 3-SECTION, MAST-ARM MOUNTED	EACH	5
SIGNAL HEAD, LED, 1-FACE 5-SECTION, BRACKET MOUNTED	EACH	3
SIGNAL HEAD, LED, 1-FACE 5-SECTION, MAST-ARM MOUNTED	EACH	4
SIGNAL HEAD, LED, 2-FACE 1-3 SECTION, 1-5 SECTION, BRACKET MOUNTED	EACH	1
TRAFFIC SIGNAL BACKPLATE, LOUVERED	EACH	9
LIGHT DETECTOR	EACH	2
LIGHT DETECTOR AMPLIFIER	EACH	1
EMERGENCY VEHICLE PRIORITY SYSTEM LINE SENSOR CABLE, NO. 20 3/C	FOOT	235.0
FULL-ACTUATED CONTROLLER AND TYPE IV CABINET, SPECIAL	EACH	1
UNINTERRUPTABLE POWER SUPPLY, SPECIAL	EACH	1
VIDEO DETECTION SYSTEM COMPLETE INTERSECTION	L SUM	0.50



**CABLE PLAN**

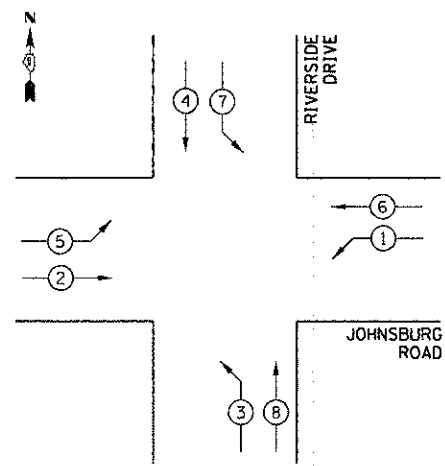
**NOTE:**  
THE TRAFFIC SIGNAL CONTROL EQUIPMENT FOR THIS PROJECT SHALL BE "ECONOLITE" AS REQUIRED BY THE MCHENRY COUNTY DIVISION OF TRANSPORTATION.

M.C.D.O.T. TRAFFIC SIGNAL INSTALLATION ELECTRICAL SERVICE REQUIREMENTS					TOTAL WATTAGE
TYPE	NO. LAMPS	WATTAGE		% OPERATION	
		INCAND.	LED		
SIGNAL (RED)	14	17	0.50	0.50	119.00
(YELLOW)	14	25	0.25	0.25	87.50
(GREEN)	14	15	0.25	0.25	52.50
ARROW	16	12	0.10	0.10	19.20
CONTROLLER	1	100	1.00	1.00	100.00
UPS	1	25	1.00	1.00	25.00
VIDEO SYSTEM	1	15	1.00	1.00	15.00
TOTAL =					418.20

ENERGY COSTS TO: VILLAGE OF JOHNSBURG  
1515 CHANNEL BEACH AVENUE  
JOHNSBURG, IL 60051

ENERGY SUPPLY CONTACT: NORA FERNANDEZ  
PHONE: 866-639-3532  
COMPANY: COMMONWEALTH EDISON

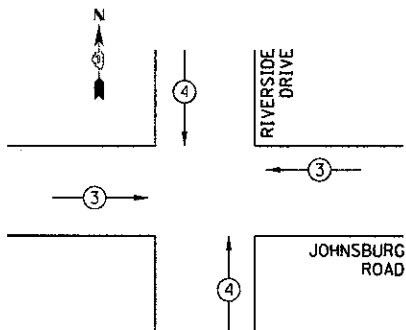
**CONTROLLER SEQUENCE**



**PHASE DESIGNATION DIAGRAM**

**CONTROLLER SEQUENCE LEGEND**

- ← ⊙ → DUAL ENTRY PHASE
- ← ⊙ SINGLE ENTRY PHASE
- ← ⊙ OL OVERLAP
- \* NUMBER REFERRING TO ASSOCIATED PHASE
- ← ⊙ → PEDESTRIAN PHASE



**EMERGENCY VEHICLE PREEMPTION SEQUENCE**

PROPOSED EMERGENCY VEHICLE PREEMPTORS

PROPOSED EMERGENCY VEHICLE PREEMPTORS	3	4
MOVEMENT	←	↑

**JOHNSBURG ROAD @ RIVERSIDE DRIVE**

COMPANY NAME: HRGreen  
 PROJECT CONTACT: HRGreen.com  
 DATE PLOTTED: 12/19/2012 2:55:21 PM  
 FILE NAME: 080822-sig01e-riv.dgn  
 PLOT DRIVER: pcf\_drv\_no\_level1c19  
 PEN TABLE: s1r080822-trans.tbl



USER NAME = jast1000  
 FILE NAME = 080822-sig01e-riv.dgn  
 PLOT SCALE = NTS  
 PLOT DATE = 12/19/2012

DESIGNED -  
 DRAWN -  
 CHECKED -  
 DATE - 12/19/12

REVISED -  
 REVISED -  
 REVISED -  
 REVISED -

**MCHENRY COUNTY DIVISION OF TRANSPORTATION**

**CABLE AND PHASE DESIGNATION DIAGRAM AND EMERGENCY VEHICLE PREEMPTION SEQUENCE**  
 SCALE: NTS SHEET NO. 3 OF 4 SHEETS STA. TO STA.

F.A.U. RTE.	SECTION	COUNTY	TOTAL SHEETS	SHEET NO.
168	05-00314-00-WR	MCHENRY	187	97
CONTRACT NO.				63515
FED. ROAD DIST. NO. ILLINOIS FED. AID PROJECT				