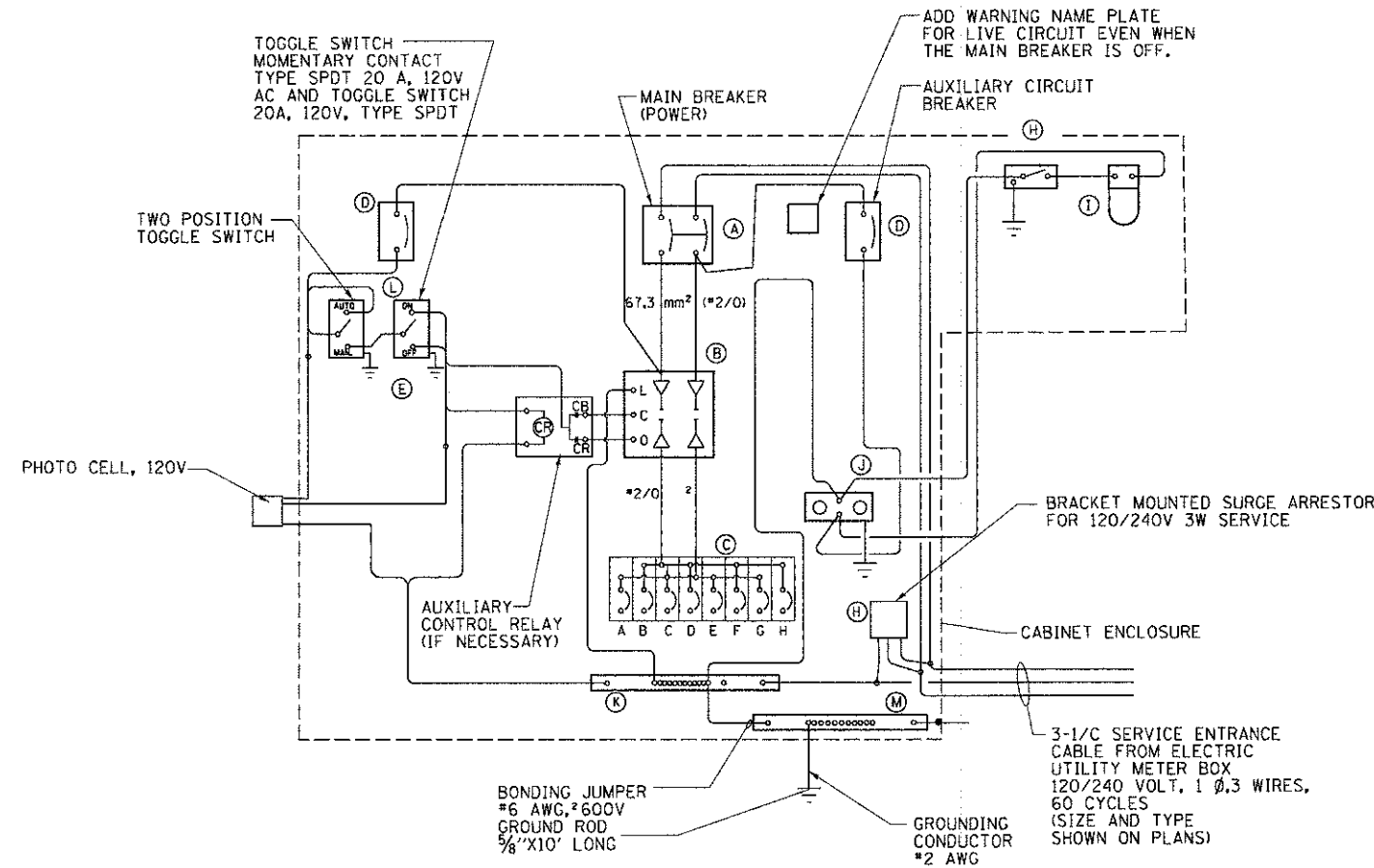


PANEL EQUIPMENT

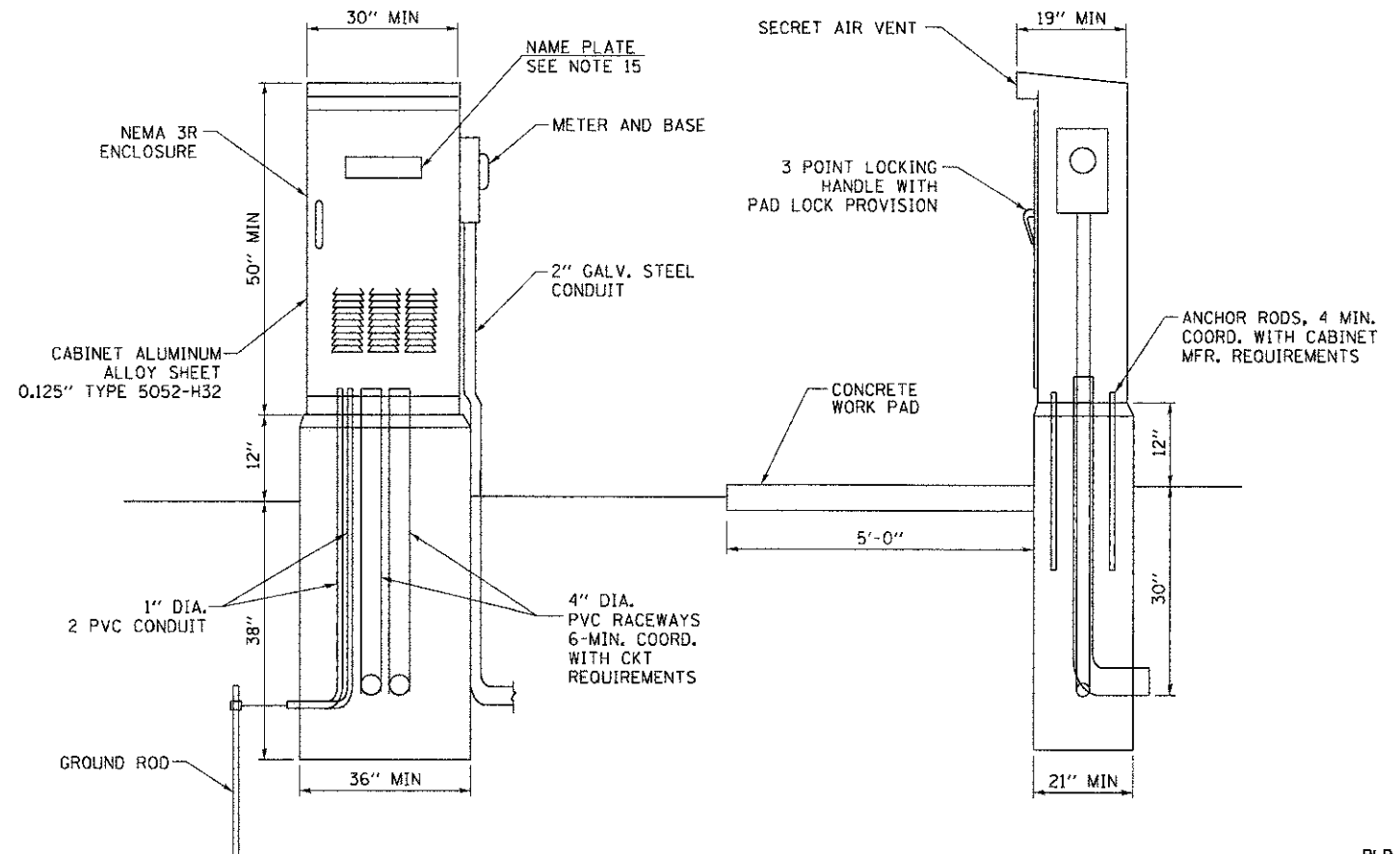
BILL OF MATERIAL		
ITEM	QTY.	DESCRIPTION
A	1	MAIN CIRCUIT BREAKER, 2 POLE, 600 VOLT 200AMP. FRAME, 150AMP. NON-INTERCHANGEABLE TRIP INTERRUPTING RATING NEMA-22000 AMP. AT 240 VOLT.
B	1	LIGHTING CONTACTOR, ELECTRICALLY OPERATED, MECHANICALLY HELD, 2 POLE, SINGLE THROW, 100 AMP., 600 VOLTS CONTROL CIRCUITS 240 VOLT, ASCO 920.
C	8	CIRCUIT BREAKERS, 1 POLE, 277V., 100AMP. FRAME 15AMP. NON-INTERCHANGEABLE TRIP INTERRUPTING RATING NEMA-14,000 AMP.
D	2	CONTROL CIRCUIT-CIRCUIT BREAKER, 1 POLE, 120 V., 15AMP. NON-INTERCHANGEABLE TRIP INTERRUPTING RATING NEMA-14,000 AMP.
E	1	PHOTOCCELL, 120V
H	1	SPST 20A SWITCH ON DOOR, TO TURN LIGHT ON WHEN DOOR IS OPEN.
I	1	INCANDESCENT LIGHTING FIXTURE ENCLOSED AND GASKETED WITH 60 WATT, 120 V. LAMP.
J	1	20 A., 120 V., DUPLEX RECEPTACLE, GFCI.
K	1	COPPER NEUTRAL BUS 6.35 mm (1/4") X 25.4 mm (1") X 304.8 mm (12") LONG MOUNTED ON PANEL WITH LUGS AND 4 SPARE LUGS.
L	1	TOGGLE SWITCHES MOUNTED IN 101.6 mm (4") X 101.6 mm (4") BOX.
M	1	COPPER GROUND BUS 6.35 mm (1/4") X 25.4 mm (1") X 304.8 mm (12") LONG MOUNTED ON PANEL WITH LUGS AND SPARE LUGS.
N	1	SURGE ARRESTOR



WIRING DIAGRAM

NOTES:

- ALL DIMENSIONS ARE IN MILLIMETERS (INCHES) UNLESS OTHERWISE NOTED.
- FOUNDATION SIZE SHALL BE COORDINATED WITH CABINET SIZE AND MFR.
- DOOR SHALL BE CONSTRUCTED FROM SAME TYPE OF MATERIAL AND THICKNESS AS CABINET.
- DOOR SHALL BE EQUIPPED WITH THREE POINT LATCHING MECHANISM WITH NYLON ROLLERS AT TOP THE BOTTOM.
- DOOR HINGE SHALL BE A HEAVY GAUGE CONTINUOUS HINGE WITH A 6.35 mm (1/4") DIA. STAINLESS STEEL HINGE PIN.
- ALL EXTERNAL HARDWARE SHALL BE STAINLESS STEEL.
- CONTROL WIRING TO BE #12 AWC, 600V, TYPE "SIS" GRAY SWITCH BOARD WIRE, STRANDED COPPER.
- METER BOX SHALL BE MOUNTED ON THE SIDE OF CONTROL CABINET, NEAR TO THE SERVICE POLE.
- CABINETS SHALL BE PRIMED AND PAINTED WITH TWO COATS OF ALKYD BASE ENAMEL. THE FINISH COLOR SHALL BE BLACK.
- THE HEADS OF CONNECTORS SCREWS SHALL BE PAINTED WHITE FOR NEUTRAL BAR CONNECTION AND GREEN FOR GROUND BAR CONNECTORS.
- ALL WIRING WITHIN THE CABINET SHALL BE COLOR CODED AS INDICATED.  
R = RED BL = BLUE W = WHITE  
B = BLACK Y = YELLOW G = GREEN
- PROVIDE SEALING GROMMETS FOR ALL OPEN WIRING EXTENDED FROM DEVICES IN BOXES OR CABINETS WITHIN THE CONTROL CABINET.
- ALL WIRING SHALL BE NEATLY DRESSED AND SUPPORTED.
- THE CONTROLLER SHALL BE CONSTRUCTED TO U.L. STD. 508 AND BEAR THE U.L. LABEL "ENCLOSED INDUSTRIAL CONTROL PANEL".
- 304.8 mm (12") X 406.4 mm (16") STAINLESS STEEL EXTERIOR NAMEPLATE SHALL BE ENGRAVED TO "MCDOT" UNLESS OTHERWISE SPECIFIED.
- SERVICE DISCONNECT SHOULD HAVE UL LABEL AND THE EQUIPMENT SHOULD BE SUITABLE FOR SERVICE ENTRANCE EQUIPMENT.



RLP-10

COMPANY NAME: HRGreen.com  
PROJECT CONTACT: jettana  
CLIENT: MCHENRY COUNTY  
DATE PLOTTED: 12/19/2012 3:16:46 PM  
FILE NAME: RLP-10.dgn  
PLOT DRIVER: pdfwrite.exe  
PEN TABLE: standard.ctb

**HRGreen.com**  
Illinois Professional Design Firm  
# 184-001522

USER NAME = jettana	DESIGNED -	REVISED -
FILE NAME = RLP-10.dgn	DRAWN -	REVISED -
PLOT SCALE =	CHECKED -	REVISED -
PLOT DATE = 12/19/2012	DATE = 12/19/12	REVISED -

MCHENRY COUNTY  
DIVISION OF TRANSPORTATION

LIGHTING PLAN  
LIGHTING CONTROLLER

SCALE: SHEET NO. 9 OF 13 SHEETS STA. TO STA.

F.A.U. RTE.	SECTION	COUNTY	TOTAL SHEETS	SHEET NO.
168	05-00314-00-WR	MCHENRY	187	117
FED. ROAD DIST. NO. ILLINOIS FED. AID PROJECT			CONTRACT NO. 63515	