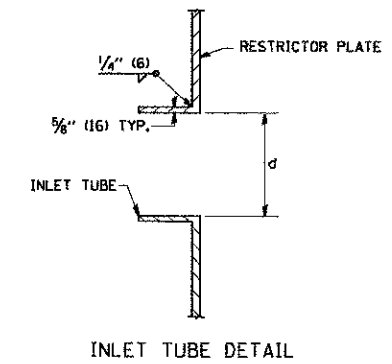
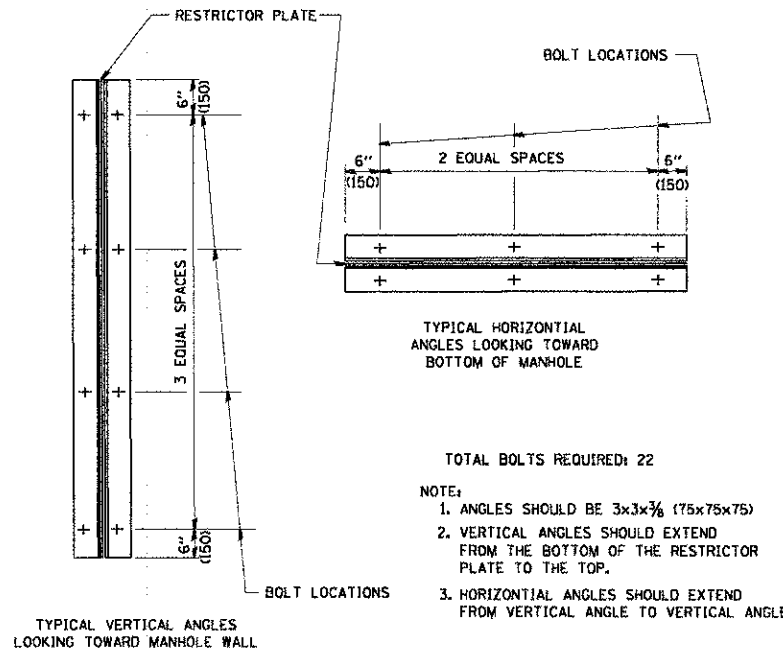


- NOTES:
- ALL STEEL ANGLES AND PLATES TO BE GALVANIZED AFTER FABRICATION.
 - ALL RESTRICTOR PLATES, ANGLES AND HARDWARE TO BE INCLUDED IN THE COST OF THE MANHOLE.
 - BASIS OF PAYMENT: "MANHOLES, TYPE A, 6 FT. (1.8 m)-DIAMETER, TYPE I FRAME, CLOSED LID, RESTRICTOR PLATE" EACH



STATION	MANHOLE DIAMETER	FRAME AND GRATE	RESTRICTOR TYPE	INSIDE RESTRICTOR TYPE DIAMETER In. (mm)	INVERT OF RESTRICTOR TYPE 2-YR/(100-YR)	ELEVATION OF TOP OF PLATE OVERFLOW
104+64, 37' LT	6'	TICL	3	4", 6"	808.52/(809.60)	811.56
156+25, 32' RT	7'	TICL	3	4", 6"	746.60/(748.58)	750.60



RESTRICTOR TYPE					
1	2	3	4	5	6
RE-ENTRANT TUBE	SHARP EDGED	SQUARE EDGED	RE-ENTRANT TUBE	SQUARE EDGED	ROUNDED
LENGTH 1/2 TO 1 DIA.		STREAM CLEARS SIDES	LENGTH 2-1/2 DIA.	LENGTH 2-1/2 DIA.	
C=.52	C=.61	C=.61	C=.73	C=.82	C=.98

VALUES OF "C" FOR CIRCULAR AND SQUARE ORIFICES

ALL DIMENSIONS ARE IN INCHES (MILLIMETERS) UNLESS OTHERWISE SHOWN.

COMPANY NAME: MCHENRY COUNTY
 PROJECT CONTACT: 12/14/2012 6:08:29 PM
 CLIENT: 09022-041-05.dgn
 FILE NAME: p07.dwg, no, level, plot, g
 PLOT DRIVER: standard.ctb, plots, tol
 PEN TABLE:

FILE NAME = W:\d\st\td\22x34\bd12.dgn

USER NAME = gaglienobt
 PLOT SCALE = 60.000 / IN.
 PLOT DATE = 1/4/2008

DESIGNED - R. SHAH
 DRAWN -
 CHECKED -
 DATE - 09-09-94

REVISED - R. SHAH 10-25-94
 REVISED - E. GOMEZ 08-28-00
 REVISED - M. GOMEZ 01-08-01
 REVISED -

STATE OF ILLINOIS
 DEPARTMENT OF TRANSPORTATION

MANHOLE WITH
 RESTRICTOR PLATE

SCALE: NONE SHEET NO. 1 OF 1 SHEETS STA. TO STA.

F.A.U. RTE.	SECTION	COUNTY	TOTAL SHEETS	SHEET NO.
168	05-00314-00-WR	MCHENRY	187	133
BD600-04 (BD-12)			CONTRACT NO. 63515	
FED. ROAD DIST. NO. 1 ILLINOIS FED. AID PROJECT				