

F.A. RTE.	SECTION	COUNTY	TOTAL SHEETS	SHEET NO.
	00-00064-00-BT	DuPAGE	31	1
CONTRACT NO.: 63730		ILLINOIS	FEDERAL AID PROJECT	

INDEX OF SHEETS

SHEET NO.	SHEET DESCRIPTION
1	COVER SHEET
2	GENERAL NOTES AND EARTHWORK TABLE
3	SUMMARY OF QUANTITIES
4	TYPICAL CROSS SECTIONS AND LEGEND
5-7	ALIGNMENT, TIES AND BENCHMARKS
8	PLAN AND PROFILE SHEET KEY
9-15	PLAN AND PROFILE SHEETS
16-18	EROSION AND SEDIMENT CONTROL PLAN
19	DETAILS
20-31	CROSS SECTIONS

IDOT HIGHWAY STANDARDS

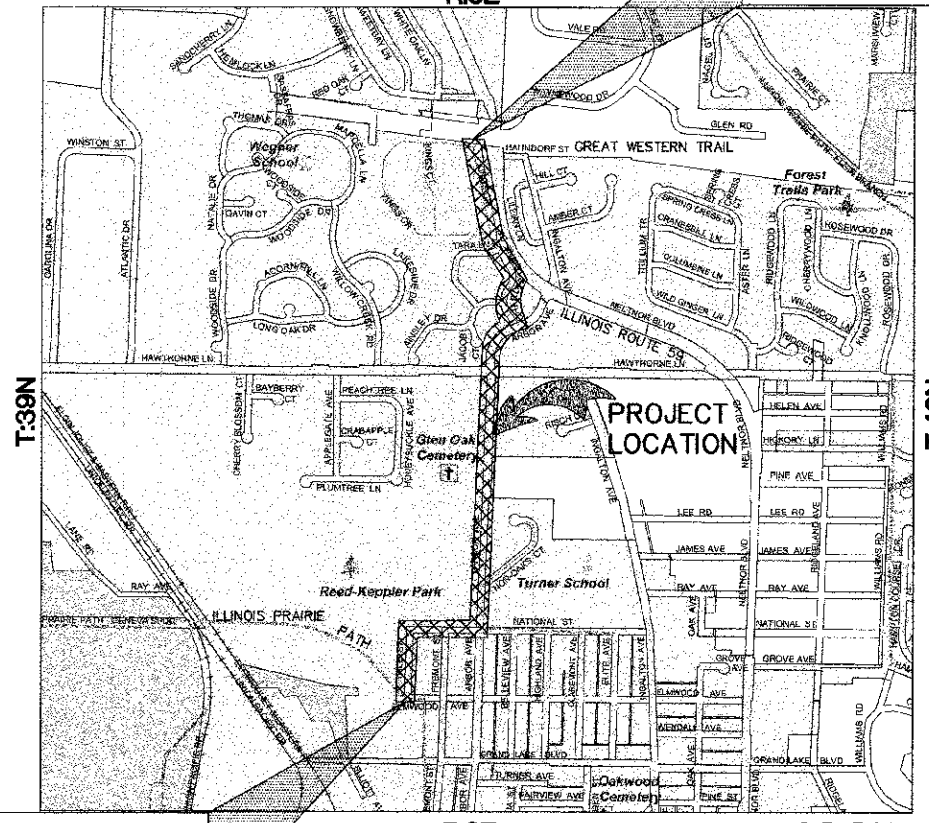
STANDARD 000001-06	STANDARD SYMBOLS, ABBREVIATIONS AND PATTERNS
STANDARD 280001-07	TEMPORARY EROSION CONTROL SYSTEMS
STANDARD 424006-01	DIAGONAL CURB RAMPS FOR SIDEWALKS
STANDARD 542301-03	PRECAST REINFORCED CONCRETE FLARED END SECTION
STANDARD 602001-02	CATCH BASIN TYPE A
STANDARD 602301-03	INLET-TYPE A
STANDARD 602306-03	INLET-TYPE B
STANDARD 602401-03	MANHOLE TYPE A
STANDARD 604001-03	FRAME AND LIDS TYPE 1
STANDARD 604006-04	FRAME AND GRATE TYPE 3
STANDARD 604036-02	GRATE TYPE 8
STANDARD 606001-05	CONCRETE CURB AND GUTTER TYPE B AND COMBINATION CONCRETE CURB AND GUTTER
STANDARD 701501-06	URBAN LANE CLOSURE, 2L,2W, UNDIVIDED
STANDARD 701701-08	URBAN LANE CLOSURE, MULTILANE INTERSECTION
STANDARD 701801-05	SIDEWALK, CORNER OR CROSSWALK CLOSURE
STANDARD 701901-02	TRAFFIC CONTROL DEVICES
STANDARD 729001-01	APPLICATIONS OF TYPES A&B METAL POSTS (FOR SIGNS AND MARKERS)

STATE OF ILLINOIS
DEPARTMENT OF TRANSPORTATION
DIVISION OF HIGHWAYS
**PLANS FOR PROPOSED
FEDERAL-AID HIGHWAY**
BIKEWAY-GENEVA SPUR GW CONNECTOR
ILLINOIS PRAIRIE PATH TO GREAT WESTERN TRAIL
PROJECT No.: M8003 (060)
SECTION No.: 00-00064-00-BT
JOB No.: C-91-241-01
CITY OF WEST CHICAGO
DuPAGE COUNTY



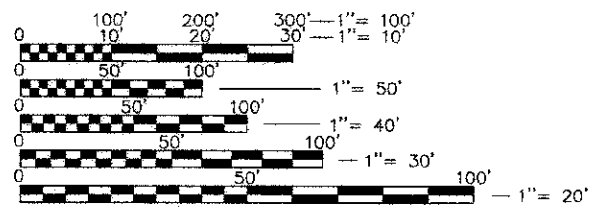
LOCATION OF SECTION INDICATED THIS: — ■ —

LOCATION MAP
(NOT TO SCALE)
R:9E PROJECT ENDS
STA. 166+22



PROJECT BEGINS
STA. 99+10

WINFIELD AND WAYNE TOWNSHIPS
GROSS LENGTH OF IMPROVEMENT = 6,718 LF (1.27 MILES)
NET LENGTH OF IMPROVEMENT = 6,718 LF (1.27 MILES)



FULL SIZE PLANS HAVE BEEN PREPARED USING STANDARD ENGINEERING SCALES. REDUCED SIZED PLANS WILL NOT CONFORM TO STANDARD SCALES. IN MAKING MEASUREMENTS ON REDUCED PLANS, THE ABOVE SCALES MAY BE USED.

J.U.L.I.E.
JOINT UTILITY LOCATION INFORMATION FOR EXCAVATION
1-800-892-0123
OR 811

CONTRACT NO. 63730

STATE OF ILLINOIS
DEPARTMENT OF TRANSPORTATION

APPROVED December 17, 2012
Douglas R. Noordan
CITY OF WEST CHICAGO, REPRESENTATIVE

PASSED December 31, 2012
C. Holt
DISTRICT 1 ENGINEER OF LOCAL ROADS & STREETS

RELEASING FOR BID
BASED ON LIMITED
REVIEW JANUARY 2, 2013
J. Patman
DEPUTY DIRECTOR OF HIGHWAYS, REGION 1 ENGINEER

ENGINEERING RESOURCE ASSOCIATES, INC.
CONSULTING ENGINEERS, SCIENTISTS & SURVEYORS

35701 WEST AVENUE, SUITE 150
WARRENVILLE, ILLINOIS 60555
PHONE (630) 393-3060
FAX (630) 393-2152
Professional Design Firm No. 184-001186
Expires April 30, 2013

John F. Mayer

John F. Mayer, P.E.
IL P.E. NO. 062-047345
Expires November 30, 2013

**PRINTED BY THE AUTHORITY
OF THE STATE OF ILLINOIS**

PROGRAM AND OFFICE ENGINEER: CHARLES RIDDLE, P.E. (847) 705-4406 SCHAUMBURG, IL

H:\West Chicago\100810-00-Blue Trail Connector\CADD\Final Design\100810-Final Detail.dwg Updated by: mmaheshwari: 12/17/2012