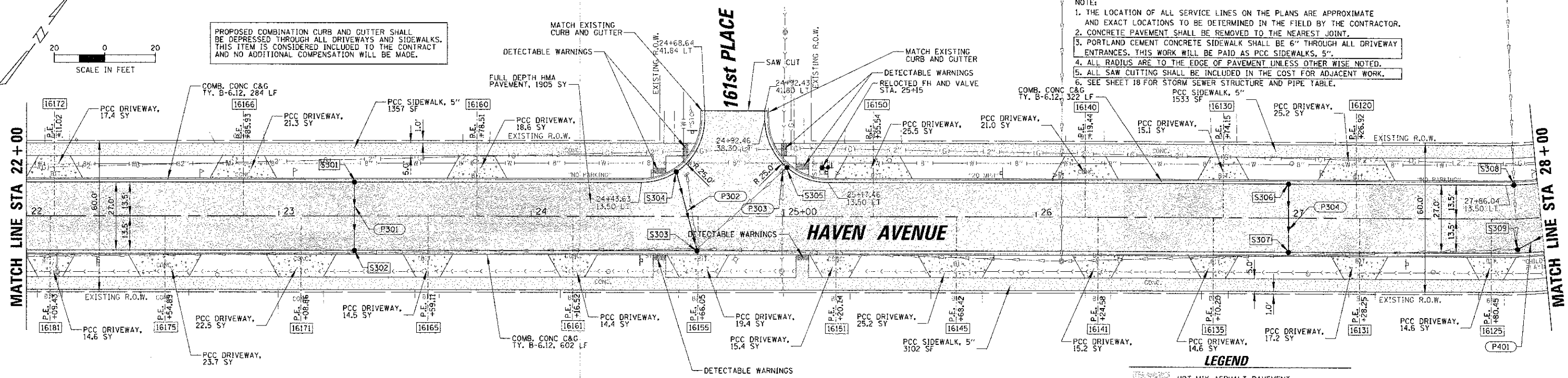


PROPOSED COMBINATION CURB AND GUTTER SHALL BE DEPRESSED THROUGH ALL DRIVEWAYS AND SIDEWALKS. THIS ITEM IS CONSIDERED INCLUDED TO THE CONTRACT AND NO ADDITIONAL COMPENSATION WILL BE MADE.

- NOTE:
1. THE LOCATION OF ALL SERVICE LINES ON THE PLANS ARE APPROXIMATE AND EXACT LOCATIONS TO BE DETERMINED IN THE FIELD BY THE CONTRACTOR.
  2. CONCRETE PAVEMENT SHALL BE REMOVED TO THE NEAREST JOINT.
  3. PORTLAND CEMENT CONCRETE SIDEWALK SHALL BE 6" THROUGH ALL DRIVEWAY ENTRANCES. THIS WORK WILL BE PAID AS PCC SIDEWALKS, 5".
  4. ALL RADII ARE TO THE EDGE OF PAVEMENT UNLESS OTHERWISE NOTED.
  5. ALL SAW CUTTING SHALL BE INCLUDED IN THE COST FOR ADJACENT WORK.
  6. SEE SHEET 18 FOR STORM SEWER STRUCTURE AND PIPE TABLE.

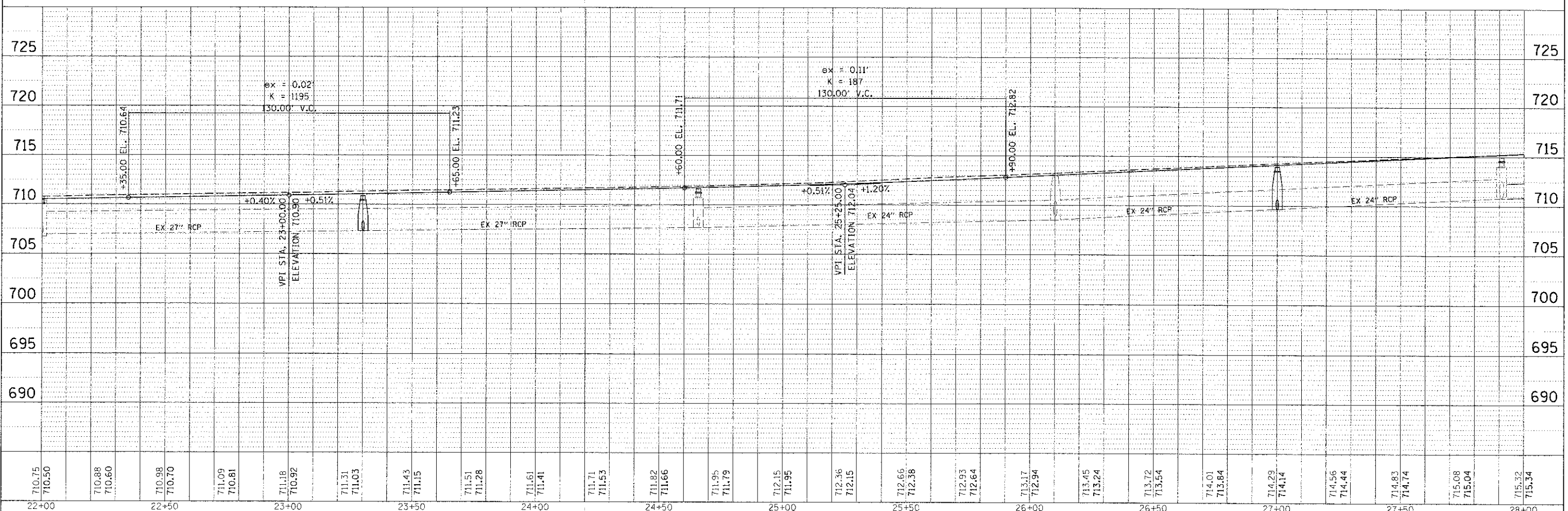
MATCH LINE STA 22+00

MATCH LINE STA 28+00



**LEGEND**

- HOT-MIX ASPHALT PAVEMENT
- PCC DRIVEWAY
- HOT-MIX ASPHALT DRIVEWAY
- PCC SIDEWALK 5"



710.75	710.50	710.88	710.60	710.98	710.70	711.09	710.81	711.18	710.92	711.31	711.03	711.43	711.15	711.51	711.28	711.61	711.41	711.71	711.53	711.82	711.66	711.95	711.79	712.15	711.95	712.36	712.15	712.66	712.38	712.93	712.64	713.17	712.94	713.45	713.24	713.72	713.54	714.01	713.84	714.29	714.14	714.56	714.44	714.83	714.74	715.08	715.04	715.32	715.34
22+00				22+50				23+00				23+50		24+00				24+50				25+00			25+50				26+00				26+50				27+00				27+50				28+00				

**CHRISTOPHER B. BURKE**  
ENGINEERING, LTD.  
1938 E. Lincoln Highway, Suite 121  
New Lenox, Illinois 60451  
(815) 483-9050

USER NAME = rskocina  
DESIGNED *CJM*  
DRAWN *MAK*  
CHECKED *DV*  
DATE = 1/13/2013

REVISED -  
REVISED -  
REVISED -  
REVISED -

**STATE OF ILLINOIS**  
**DEPARTMENT OF TRANSPORTATION**

**ROADWAY PLAN AND PROFILE**  
**HAVEN AVENUE**  
SCALE: 1" = 20' SHEET OF 59 SHEETS STA. 22+00.00 TO STA. 28+00.00

F.A.U. RTE. 1037 SECTION 10-00024-00-FP COUNTY COOK COUNTY TOTAL SHEET SHEETS NO. 59 14 CONTRACT NO. 63773 ILLINOIS FED. AID PROJECT