

| | | | |
|-------------|----------------|----------|------------------------|
| F.A.D. RTE. | SECTION | COUNTY | TOTAL SHEET SHEETS NO. |
| 3549 | 12-00046-00-RS | DUPAGE | 21 1 |
| | | ILLINOIS | CONTRACT NO. 63774 |

STATE OF ILLINOIS
DEPARTMENT OF TRANSPORTATION
DIVISION OF HIGHWAYS

PLANS FOR PROPOSED FEDERAL AID HIGHWAY

FAU ROUTE 3549 (MANCHESTER ROAD)
WINFIELD ROAD TO COUNTY FARM ROAD
STA 0+55 TO STA 40+45
PATCHING, RESURFACING AND SIDEWALK
SECTION 12-00046-00-RS
PROJECT M-9003(987)
VILLAGE OF WINFIELD, DuPAGE COUNTY
C-91-340-12

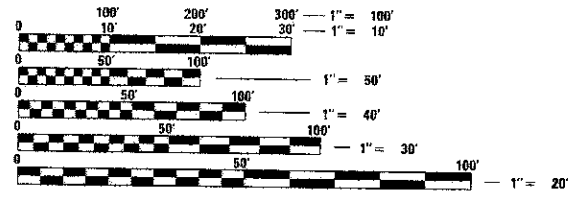
- INDEX OF SHEETS**
- 1 COVER SHEET
 - 2 GENERAL NOTES, HIGHWAY STANDARDS AND SUMMARY OF QUANTITIES
 - 3 TYPICAL SECTIONS
 - 4 SCHEDULE OF QUANTITIES
 - 5 MANCHESTER ROAD PLAN STA 0+55 TO STA 16+00
 - 6 MANCHESTER ROAD PLAN STA 16+00 TO STA 32+00
 - 7 MANCHESTER ROAD PLAN STA 32+00 TO STA 40+45
 - 8 MANCHESTER ROAD STRIPING PLAN STA 0+55 TO STA 16+00
 - 9 MANCHESTER ROAD STRIPING PLAN STA 16+00 TO STA 32+00
 - 10 MANCHESTER ROAD STRIPING PLAN STA 32+00 TO STA 40+45
 - 11 SIDEWALK IMPROVEMENTS PLAN MANCHESTER ROAD STA 0+00 TO STA 8+00
 - 12 SIDEWALK IMPROVEMENTS PLAN MANCHESTER ROAD STA 8+00 TO STA 16+75
 - 13 SIDEWALK IMPROVEMENTS PLAN MANCHESTER ROAD STA 16+75 TO STA 24+50
 - 14 SIDEWALK IMPROVEMENTS PLAN MANCHESTER ROAD STA 24+50 TO STA 32+50
 - 15 SIDEWALK IMPROVEMENTS PLAN MANCHESTER ROAD STA 32+50 TO STA 40+45
 - 16 RETAINING WALL PLAN & ELEVATION AT 27W340
 - 17 SIDEWALK TYPICAL SECTIONS
 - 18 BUTT JOINT DETAIL
 - 19 PAVEMENT MARKING DETAIL
 - 20 TRAFFIC CONTROL DETAIL
 - 21 EROSION NOTES AND DETAILS



PROGRAM AND OFFICE ENGINEER: CHARLES F. RIDDLE, P.E. (847) 705-4406 SCHAUMBURG, IL

TRAFFIC DATA
ADT (2005) = 7,400
POSTED SPEED LIMIT = 40 MPH
DESIGN SPEED = 45 MPH
CLASSIFICATION = PRINCIPAL ARTERIAL

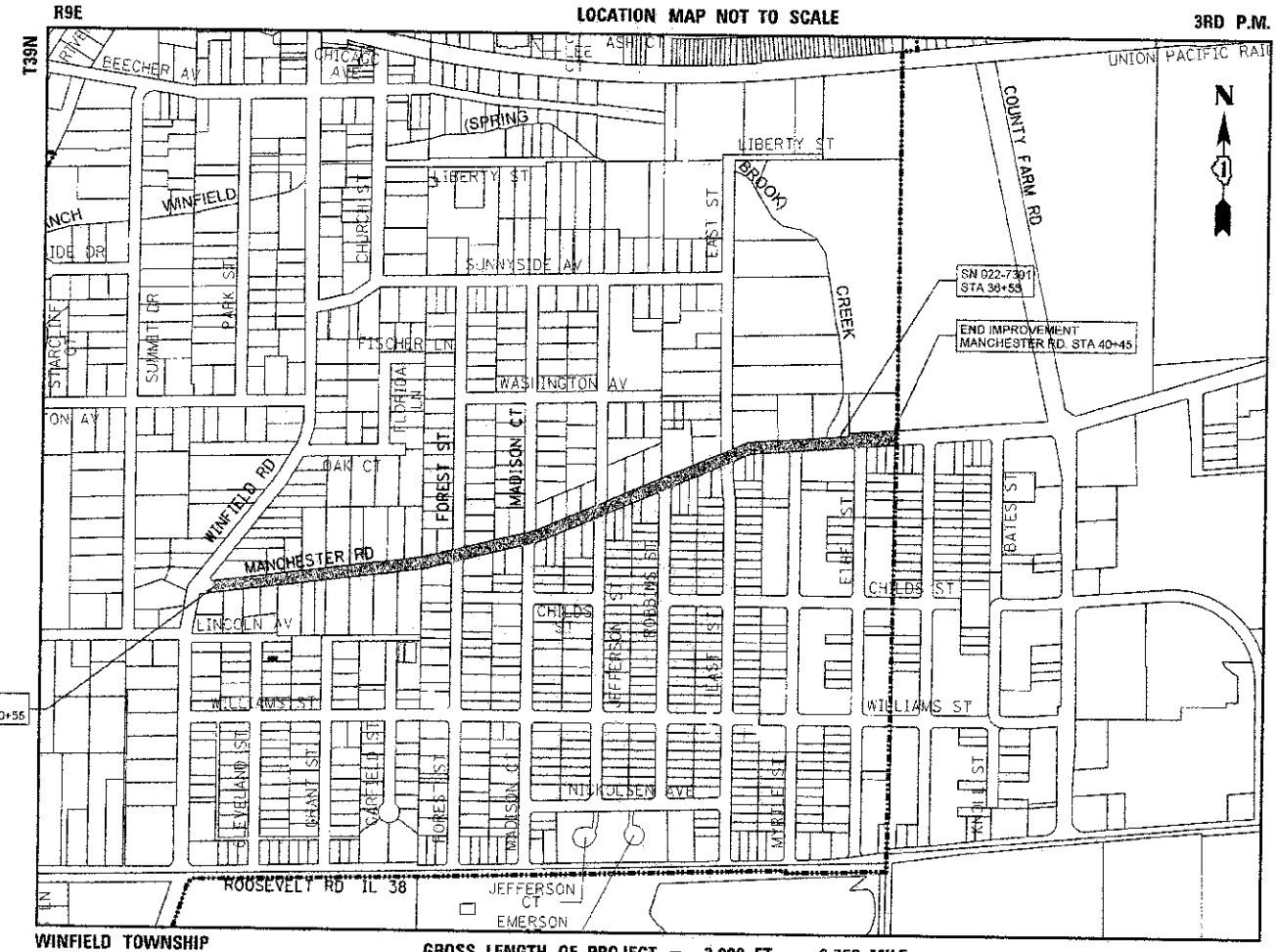
REMPE-SHARPE
CONSULTING ENGINEERS
I.L.P.E. LICENSE NO. 184-000895
324 WEST STATE STREET - GENEVA, ILLINOIS 60134
Telephone (800) 232-0827 - Fax (800) 232-1029



FULL SIZE PLANS HAVE BEEN PREPARED USING STANDARD ENGINEERING SCALES. REDUCED SIZED PLANS WILL NOT CONFORM TO STANDARD SCALES. IN MAKING MEASUREMENTS ON REDUCED PLANS, THE ABOVE SCALES MAY BE USED.

JULIE
Joint Utility Locating Information for Excavators CALL 811
Know what's below. Call before you dig.

PROJECT ENGINEER - DOUGLAS W. RANNEY II, P.E.
PROJECT MANAGER - DANIEL A. WATSON, P.E.
CONTRACT NO. 63774



GROSS LENGTH OF PROJECT = 3,990 FT = 0.756 MILE
NET LENGTH OF PROJECT = 3,990 LF = 0.756 MILE
NET LENGTH OF OMISSION = 0.0 FT = 0.0 MILE

STATE OF ILLINOIS
DEPARTMENT OF TRANSPORTATION
DIVISION OF HIGHWAYS

APPROVED DECEMBER 12, 2012
Douglas W. Ranney
VILLAGE OF WINFIELD

PASSED DECEMBER 31, 2012
Charles F. Riddle
DISTRICT ONE ENGINEER OF LOCAL ROADS AND STREETS

RELEASING FOR BID BASED ON LIMITED REVIEW JANUARY 2, 2013
Douglas W. Ranney
DEPUTY DIRECTOR OF HIGHWAYS, REGION ONE ENGINEER

Douglas W. Ranney
DOUGLAS W. RANNEY
ILLINOIS REGISTERED PROFESSIONAL ENGINEER
NO. 062-061276 EXPIRES 11-30-13

**PRINTED BY THE AUTHORITY
OF THE STATE OF ILLINOIS**