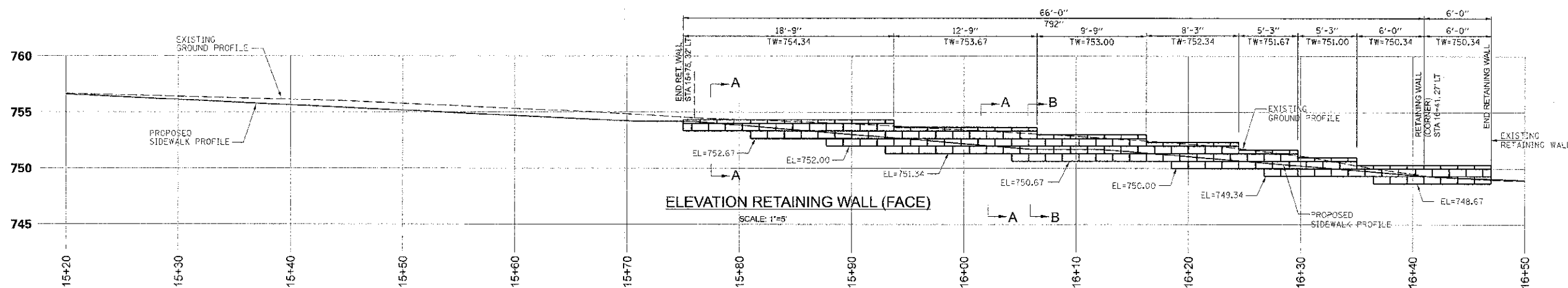


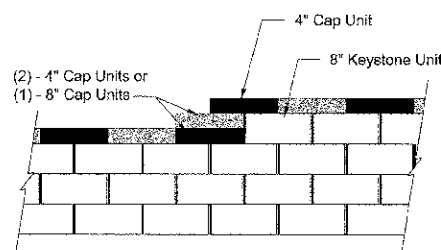
PLAN

- NOTES SEGMENTAL PRECAST WALL SPECIFICATIONS:
1. THE SECTION SHOWN REPRESENTS TYPICAL WALL SECTIONS (MAX. HEIGHT) CONSTRUCTION FOR THE RETAINING WALL KEYSTONE (OR APPROVED EQUAL) (8" UNITS) SYSTEM AT 27W340 MANCHESTER ROAD.
 2. SEE MANUFACTURER INFORMATION FOR ADDITIONAL DETAIL ON THE KEYSTONE RETAINING WALL SYSTEM. ADDITIONALLY ACCEPTABLE BLOCK MANUFACTURERS INCLUDE VERSA-LOK AND UNILOCK.
 3. PLACE 1/2" DIA. PERFORATED ADS 8-12 DRAINTILE WITH GEOTECH. WRAP AND OUTLET TO SITE DRAINAGE SYSTEM.
 4. SUB CUT TO DEPTH "D" AS REQUIRED AND REPLACE WITH SUITABLE COMPACTED STRUCTURAL FILL TO ACHIEVE THE REQUIRED BEARING CAPACITY AS DIRECTED BY SITE GEO-TECHNICAL ENGINEER. THE STRUCTURAL FILL IS TO BE COMPACTED TO A MINIMUM 95% STANDARD PROCTER DENSITY.
 5. APPROXIMATE LIMITS OF EXCAVATION VARIES WHEN SUBCUT IS REQUIRED.
 6. DO NOT BRING HEAVY EQUIPMENT WITHIN 3' OF THE BACK OF RETAINING WALLS.
 7. COORDINATE WITH ENGINEER TO DETERMINE BLOCK COLOR.



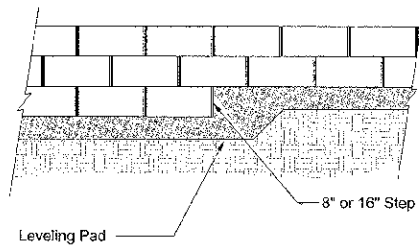
ELEVATION RETAINING WALL (FACE)

SCALE: 1"=5'



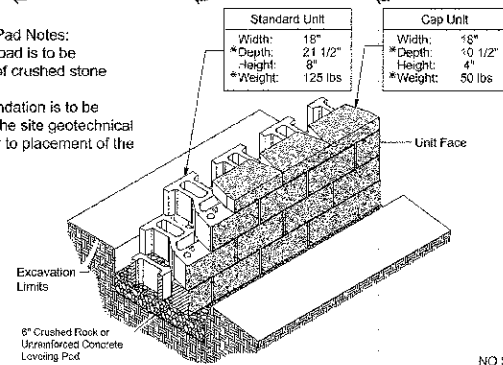
Note:
1. Secure all cap units with Keystone Kapseal or equal.

Top of Wall Steps

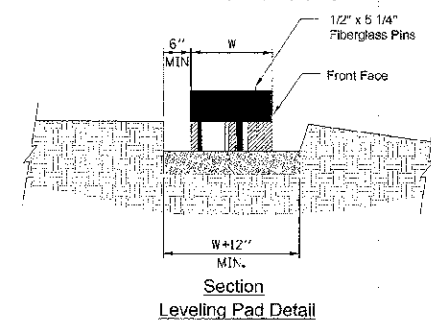


Elevation

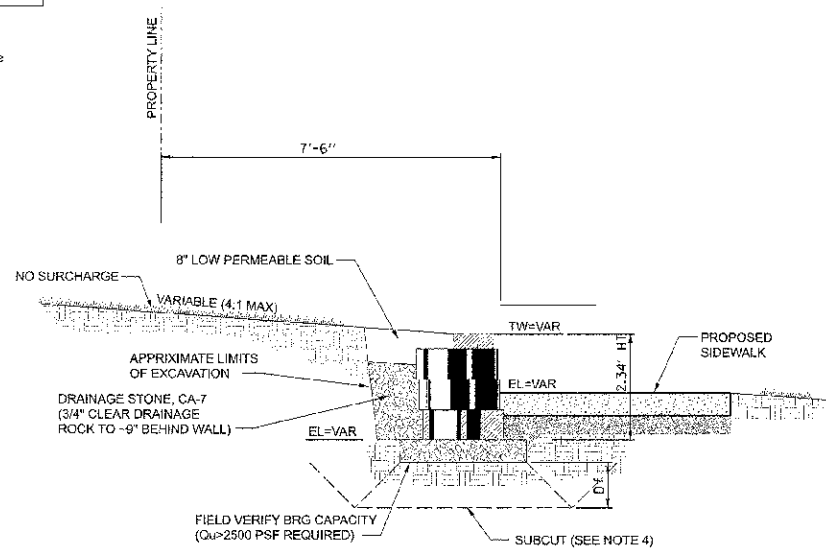
Base Leveling Pad Notes:
1. The leveling pad is to be constructed of crushed stone
2. The base foundation is to be approved by the site geotechnical engineer prior to placement of the leveling pad.



Standard Unit/Base Pad Isometric Section View
Dimensions & Weight May Vary by Region

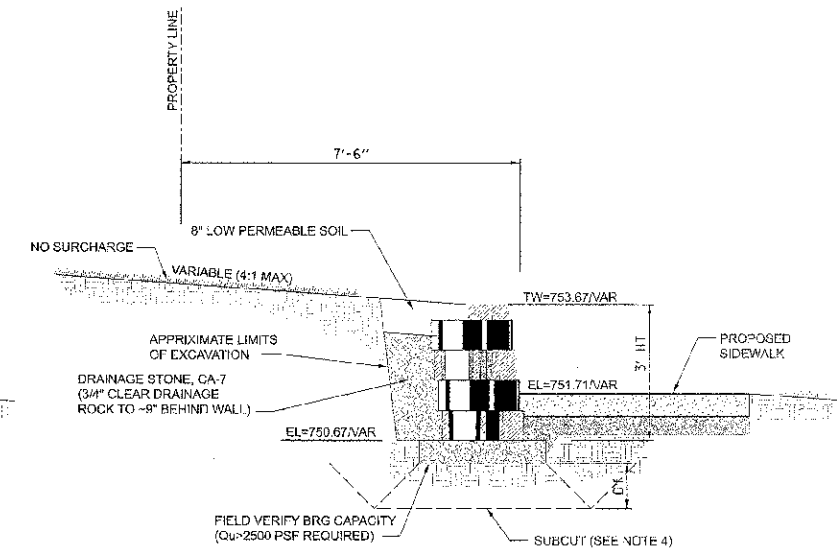


Section
Leveling Pad Detail



SECTION A-A
TYPICAL

Standard Unit - 1" Setback



SECTION B-B
TYPICAL

Standard Unit - 1" Setback

FILE NAME =	USER NAME = \$USER\$	DESIGNED - DR	REVISED -
#FILE#		DRAWN - SS	REVISED -
	PLD SCALE = \$SCALE\$	CHECKED - DW	REVISED -
	PLD DATE = \$DATE\$	DATE - DEC 2012	REVISED -

STATE OF ILLINOIS
DEPARTMENT OF TRANSPORTATION

RETAINING WALL PLAN AND ELEVATION
@ 27W340 MANCHESTER ROAD

SCALE: 1"=10'

SHEET No. 16 OF 21

F.A.H. RTE.	SECTION	COUNTY	TOTAL SHEET NO.
3549	12-00046-00-R5	DU PAGE	21 16
		CONTRACT NO.	63774
		ILLINOIS FED. AID PROJECT	