

GENERAL NOTES

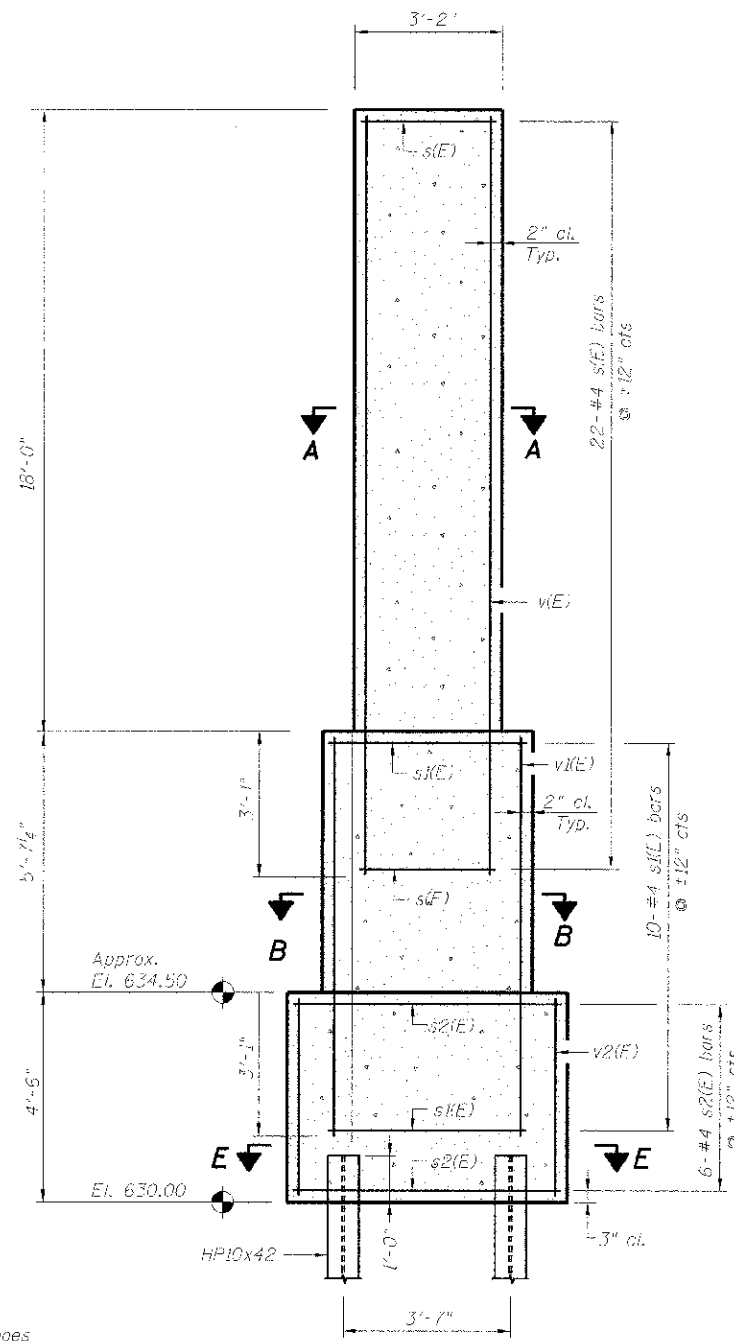
Reinforcement bars shall conform to the requirements ASTM A 706 GR 60.
Reinforcement bars designated (F) shall be epoxy coated.

DESIGN SPECIFICATIONS

2010 AASHTO LRFD Bridge Design Specifications

DESIGN STRESSES

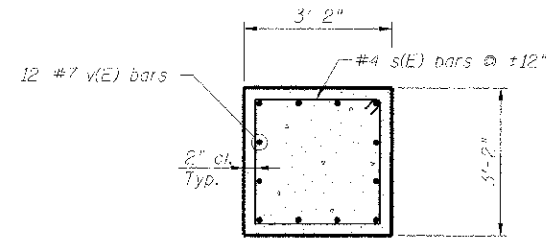
FIELD UNITS
 $f'_c = 3,500$ psi
 $f_y = 60,000$ psi (Reinforcement)



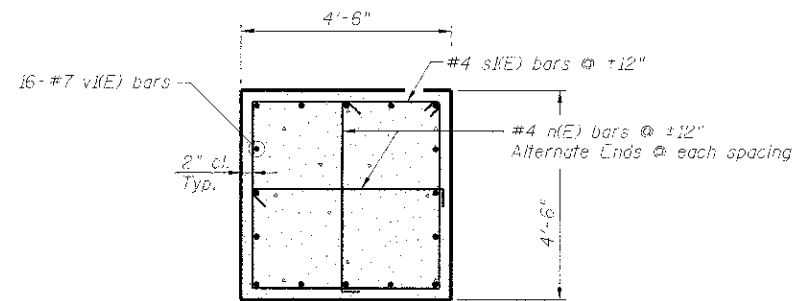
MONUMENT, TYPE A

PILE DATA

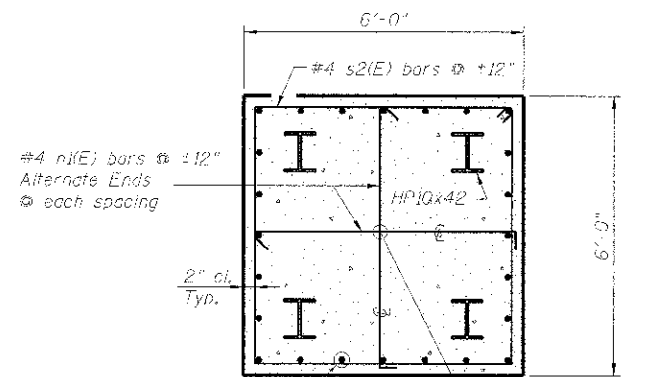
Type: HP10x42 with pile shoes
 Nominal Required Bearing: 535 Kips
 Factored Resistance Available: 184 Kips
 Estimated Length: 27'-0"
 No. Production Piles: 3
 No. Test Piles: 1
 Estimated Top of Rock Elevation: 608.50



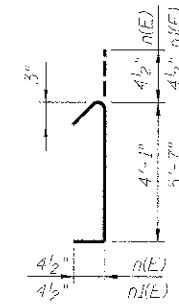
SECTION A-A



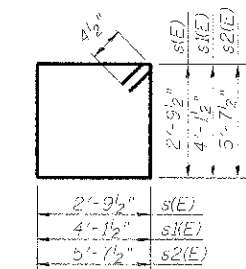
SECTION B-B



SECTION E-E



BAR n(E)



BAR s(E)

**MONUMENT, TYPE A
BILL OF MATERIAL**

Bar	No.	Size	Length	Shape
n(E)	20	4	4'-10"	┌┐
n(E)	12	4	6'-4"	┌┐
s(F)	18	4	11'-11"	□
s(E)	10	4	17'-3"	□
s2(E)	6	4	23'-3"	□
v(F)	12	7	20'-11"	▬
v(E)	16	7	8'-6 1/2"	▬
v2(E)	24	7	4'-1"	▬
Structure Excavation		Cu. Yd.	16	
Concrete Structures		Cu. Yd.	16.9	
Reinforcement Bars, Epoxy Coated		Pound	1490	
Furnishing Steel Piles: HP 10x42		Foot	81	
Driving Piles		Foot	81	
Test Pile: HP 10x42		Each	1	
Pile Shoes		Each	4	

FILE NAME =	USER NAME =	DESIGNED JGT	REVISED -
		CHECKED JN	REVISED -
		DRAWN ROD	REVISED -
		CHECKED - 12/17/2012	REVISED -

STATE OF ILLINOIS
DEPARTMENT OF TRANSPORTATION

VILLAGE OF HILLSIDE
MANNHEIM ROAD STREETScape & I-290 BRIDGE IMPROVEMENTS
MONUMENT, TYPE A ELEVATION PLAN

F.A.P. RITE	SECTION	COUNTY	TOTAL SHEETS	SHEET NO.
330	06-00045-00-LS	COOK	12	06
CONTRACT NO. 63783			ILLINOIS FED. AID PROJECT	

SHEET NO. 06 OF 12 SHEETS