

FOR INDEX OF SHEETS, SEE SHEET NO. 02 03-08-13 LETTING ITEM 073 STATE OF ILLINOIS

F.A.P. RTE. 330	SECTION 06-00045-00-LS	COUNTY COOK	TOTAL SHEETS 12	SHEET NO. 1
ILLINOIS		CONTRACT NO. 63783		

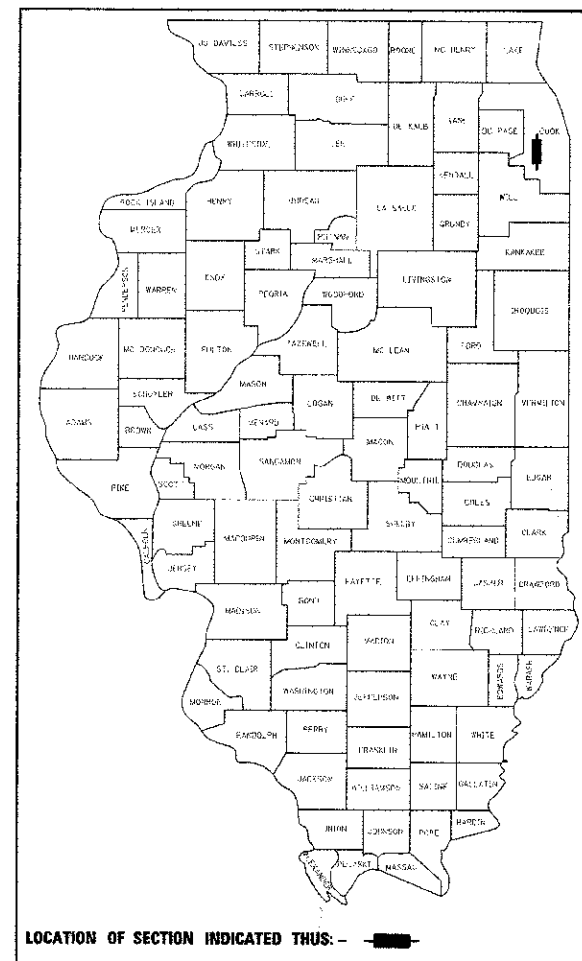
ALIGNMENT	CLASSIFICATION	DESIGN SPEED	POSTED SPEED	ADT (YEAR)
MANNHEIM ROAD (US 12/20/45) (FAP 330)	PRINCIPAL ARTERIAL	35 MPH	35 MPH	42,000 (2011)

DEPARTMENT OF TRANSPORTATION
DIVISION OF HIGHWAYS

PLANS FOR PROPOSED FEDERAL AID HIGHWAY

FAP 330 (MANNHEIM ROAD)
ROOSEVELT ROAD TO WASHINGTON BOULEVARD
STREETSCAPE & I-290 BRIDGE IMPROVEMENTS

SECTION NO.: 06-00045-00-LS
PROJECT: TE-00D1(744)
JOB: C-91-091-07
VILLAGE OF HILLSIDE
COOK COUNTY



STATE OF ILLINOIS
DEPARTMENT OF TRANSPORTATION
DIVISION OF HIGHWAYS

APPROVED December 17, 2012
[Signature]
VILLAGE OF HILLSIDE, DIRECTOR OF PUBLIC WORKS

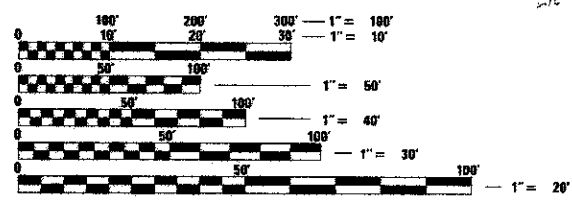
PASSED December 31, 2012
[Signature] C. Holt
DISTRICT 1, ENGINEER OF LOCAL ROAD & STREETS

RELEASED FOR BID
BASED ON LIMITED
REVIEW JANUARY 2, 2013
[Signature]
DEPUTY DIRECTOR OF HIGHWAYS, REGION 1 ENGINEER

**PRINTED BY THE AUTHORITY
OF THE STATE OF ILLINOIS**

VILLAGE OF HILLSIDE
425 Hillside Avenue
Hillside, Illinois 00162
Telephone: 708.202.3434
Fax: 708.202.3432

PROGRAM AND OFFICE ENGINEER: CHARLES F. RIDDLE, P.E., TEL. 847-705-4406 SCHAUMBURG, IL



FULL SIZE PLANS HAVE BEEN PREPARED USING STANDARD ENGINEERING SCALES. REDUCED SIZED PLANS WILL NOT CONFORM TO STANDARD SCALES. IN MAKING MEASUREMENTS ON REDUCED PLANS, THE ABOVE SCALES MAY BE USED.

J.U.L.I.E.
JOINT UTILITY LOCATION INFORMATION FOR EXCAVATION
1-800-892-0123
OR 811

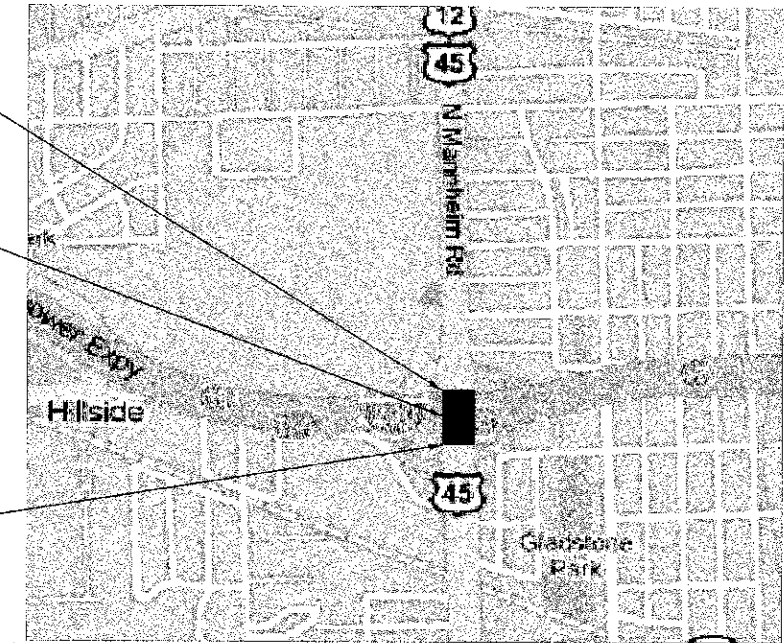
PROJECT ENGINEER (CIVIL): JOHN NELSON (HANSON)
PROJECT ENGINEER (STRUCTURAL): JEFF TATAREK (HANSON)
PROJECT ARCHITECT: PAUL WIESE (JJR)
PROJECT MANAGER: JOHN NELSON (HANSON)

CONTRACT NO. 63783

PROJECT ENDS
STATION 68 + 50.00

MANNHEIM BRIDGE
OVER I-290
STRUCTURE: 016-2760

PROJECT BEGINS
STATION 64 + 00.00



SE 1/4 SEC. 7, SW 1/4 SEC. 8, NW 1/4 SEC. 17, & NE 1/4 SEC. 18, T-39N, R-12E
PROVISO TOWNSHIP 3RD P.M.

LOCATION MAP
GROSS LENGTH = 330 FT. = (0.06 MILE)
NET LENGTH = 330 FT. = (0.06 MILE)

© Copyright Hanson Professional Services Inc. 2012
HANSON
Hanson Professional Services Inc.

815 Commerce Drive Suite 200
Oak Brook, Illinois 60521
Telephone: 630.989.3800
Fax: 630.990.3801

SMITHGROUP

SUMMARY OF QUANTITIES

SPECIAL PROVISION	PAY ITEM	DESCRIPTION	UNIT	TOTAL QUANTITY	CONSTRUCTION TYPE CODE		
					0031	0040	0042
*	21101645	TOPSOIL FURNISH AND PLACE 12"	SQ YD	106	106		
	50200100	STRUCTURE EXCAVATION	CU YD	55.0		55.0	
	50300225	CONCRETE STRUCTURES	CU YD	37.0		37.0	
	50800205	REINFORCEMENT BARS, EPOXY COATED	POUND	3260.0		3260.0	
	51201400	FURNISHING STEEL PILES, HP 10X42	FOOT	81.0		81.0	
	51202305	DRIVING PILES	FOOT	81.0		81.0	
	51203400	TEST PILE, HP 10X42	EACH	1.00		1.00	
	51204650	PILE SHOES	EACH	4.0		4.0	
	67100100	MOBILIZATION	L SUM	1.0		1.0	
*	K0012993	PERENNIAL PLANTS, ORNAMENTAL TYPE, 3-GALLON POT	UNIT	4.66	4.66		
*	x	K0028850	PERENNIAL PLANT CARE	SQ YD	700.00	700.00	
*	x	K0029634	WEED CONTROL, PRE-EMERGENT GRANULAR HERBICIDE	POUND	5.00	5.00	
*	x	K1005481	SHREDDED BARK MULCH 3"	SQ YD	135	135	
*	x	XX007415	MONUMENT, TYPE A	EACH	1.0		1.0
*	x	XX007416	MONUMENT, TYPE B	EACH	1.0		1.0
	x	Z0013796	CONSTRUCTION LAYOUT	L SUM	1.0		1.0

* SPECIALTY ITEMS

FILE NAME = c:\pwworkspace\11111111\11111111\11111111.dwg

LAYOUT
DRAWN
REVIEWED

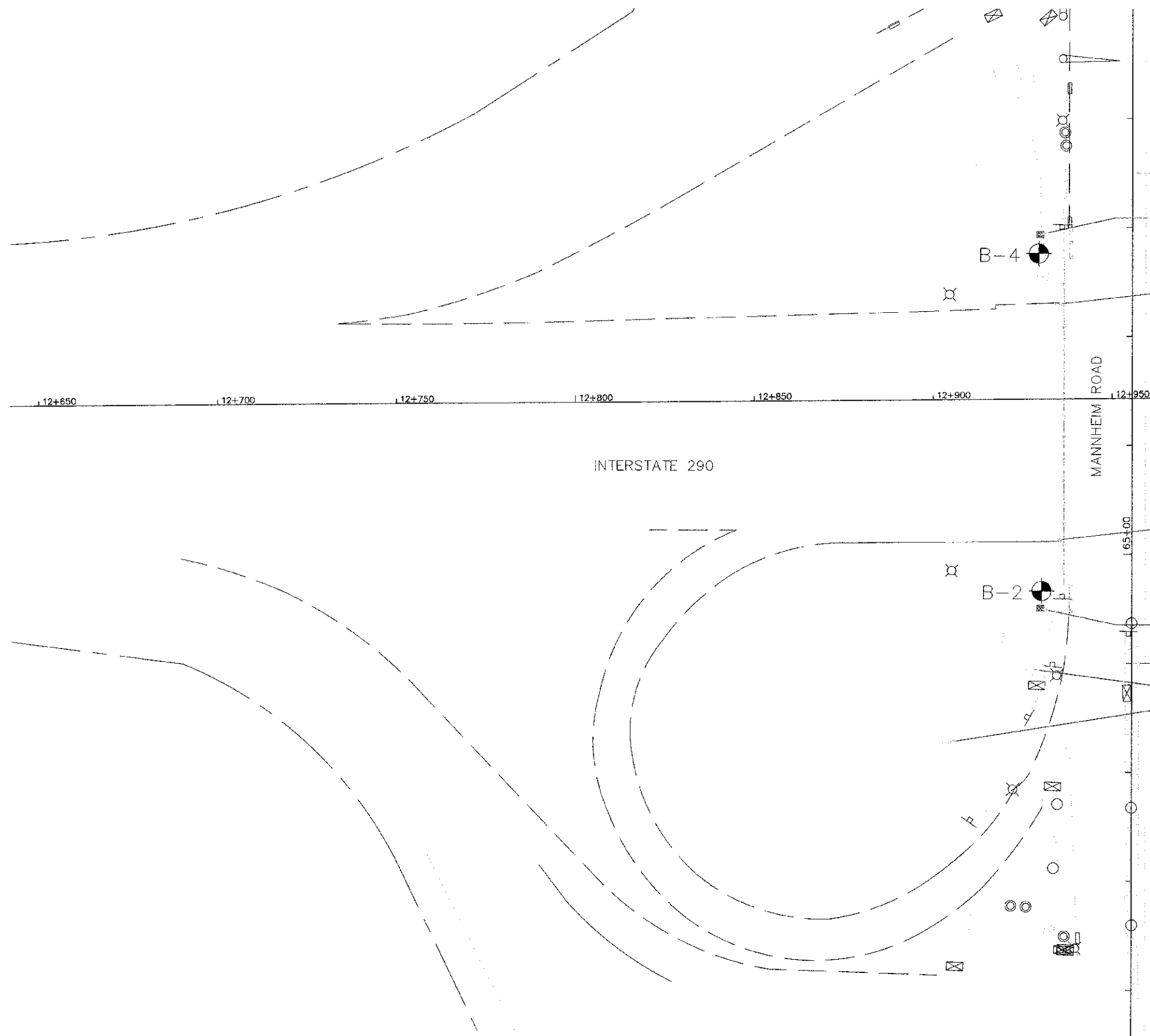
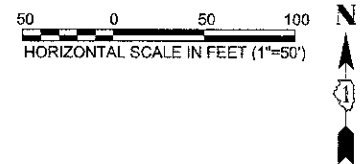
USER NAME = Pate-01040	DESIGNED - DWP	REVISED -
PLOT SCALE = 40.0000 1/4" = 1'	DRAWN - DWP	REVISED -
PLOT DATE = 01/03/2013	CHECKED - AMN	REVISED -
	DATE - 12/17/2012	REVISED -

**STATE OF ILLINOIS
DEPARTMENT OF TRANSPORTATION**

**VILLAGE OF HILLSIDE
MANNHEIM ROAD STREETSCAPE & I-290 BRIDGE IMPROVEMENTS
SUMMARY OF QUANTITIES**

F.A.P. RTE. 330	SECTION 06-00045-00-LS	COUNTY COOK	TOTAL SHEETS 12	SHEET NO. 03
CONTRACT NO. 63783			ILLINOIS	

SCALE: AS SHOWN SHEET NO. 03 OF 12 SHEETS STA. TO STA.



SEE SHEET 12 OF 12 FOR SOIL BORING INFORMATION.

NOTE: ALL SOILS EXCAVATED FROM CONSTRUCTION OF THE MONUMENTS SHALL BE SPREAD ON SITE AT LOCATIONS DETERMINED BY THE ENGINEER AT THE TIME OF CONSTRUCTION

ENGINEER TO PROVIDE BENCHMARK AND CONTROL POINT INFORMATION TO THE CONTRACTOR AT THE TIME OF CONSTRUCTION.

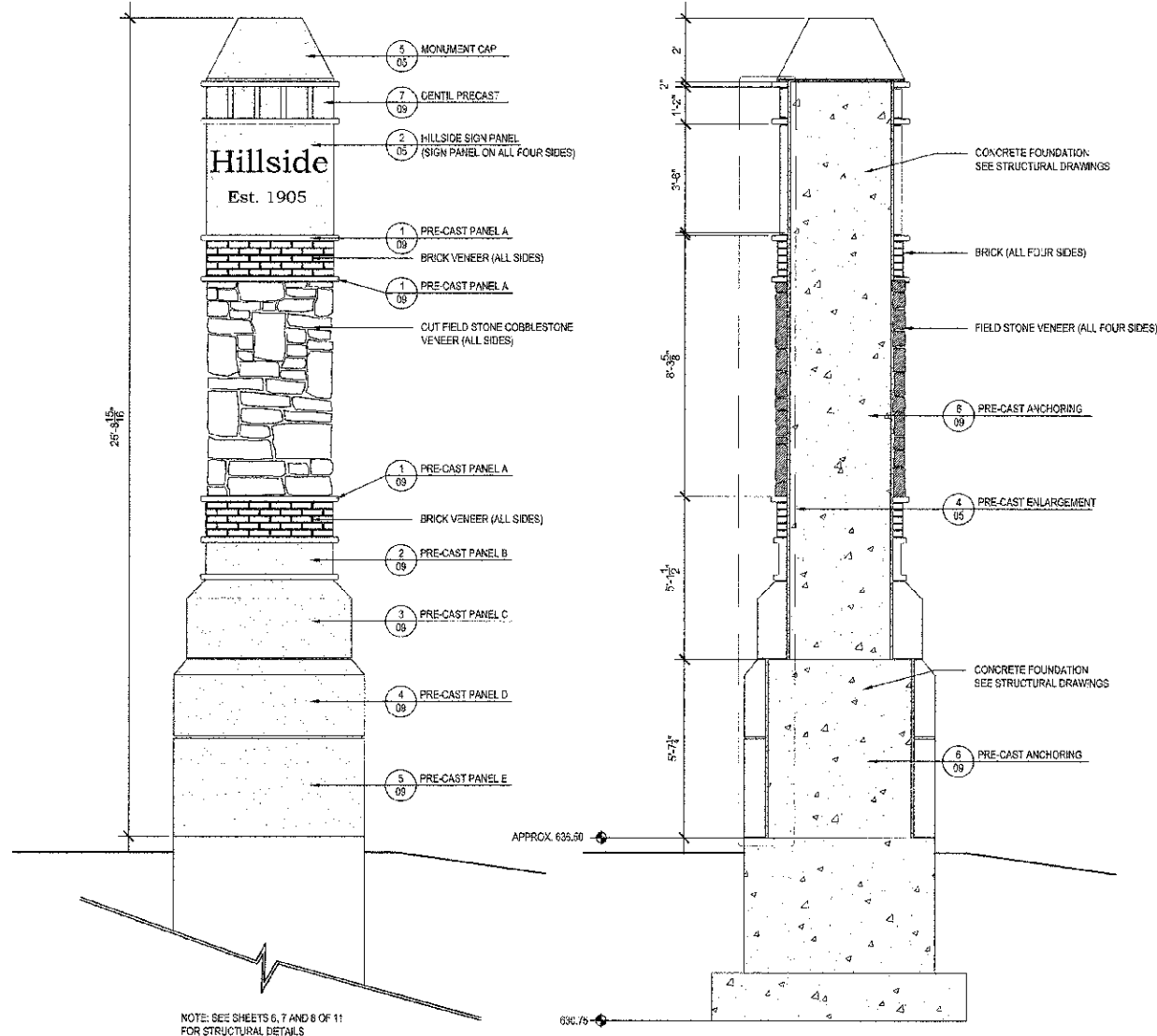
FILE NAME = S301E18
LAYOUT
DRAWN
REVIEWED

USER NAME =	DESIGNED -- RMM/W	REVISED --
PLOT SCALE = 1"=50'	DRAWN -- MW	REVISED --
PLOT DATE = 12/10/2012	CHECKED -- RM	REVISED --
	DATE -- 12/17/2012	REVISED --

STATE OF ILLINOIS
DEPARTMENT OF TRANSPORTATION

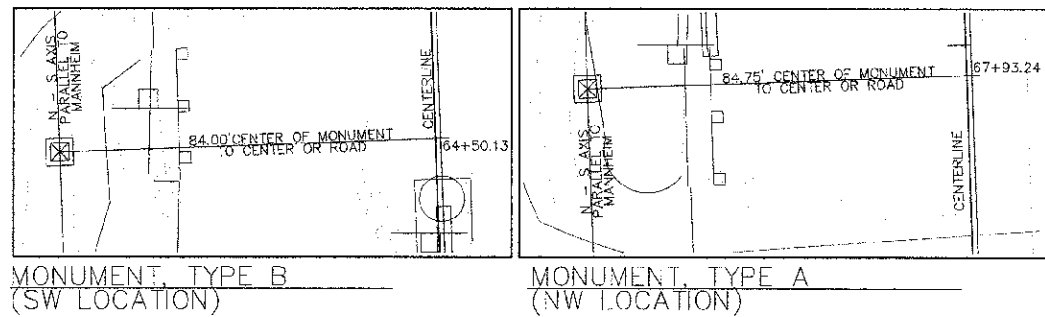
VILLAGE OF HILLSIDE MANNHEIM ROAD STREETSCAPE SITE PLAN		
SCALE: AS SHOWN	SHEET NO. 04 OF 12 SHEETS	STA. 64+00.00 TO STA. 68+50.00

F.A.P. RTE. : S30	SECTION : 06-00049-00-LS	COUNTY : COOK	TOTAL SHEETS : 12	SHEET NO. : 04
CONTRACT NO. 63783			ILLINOIS	

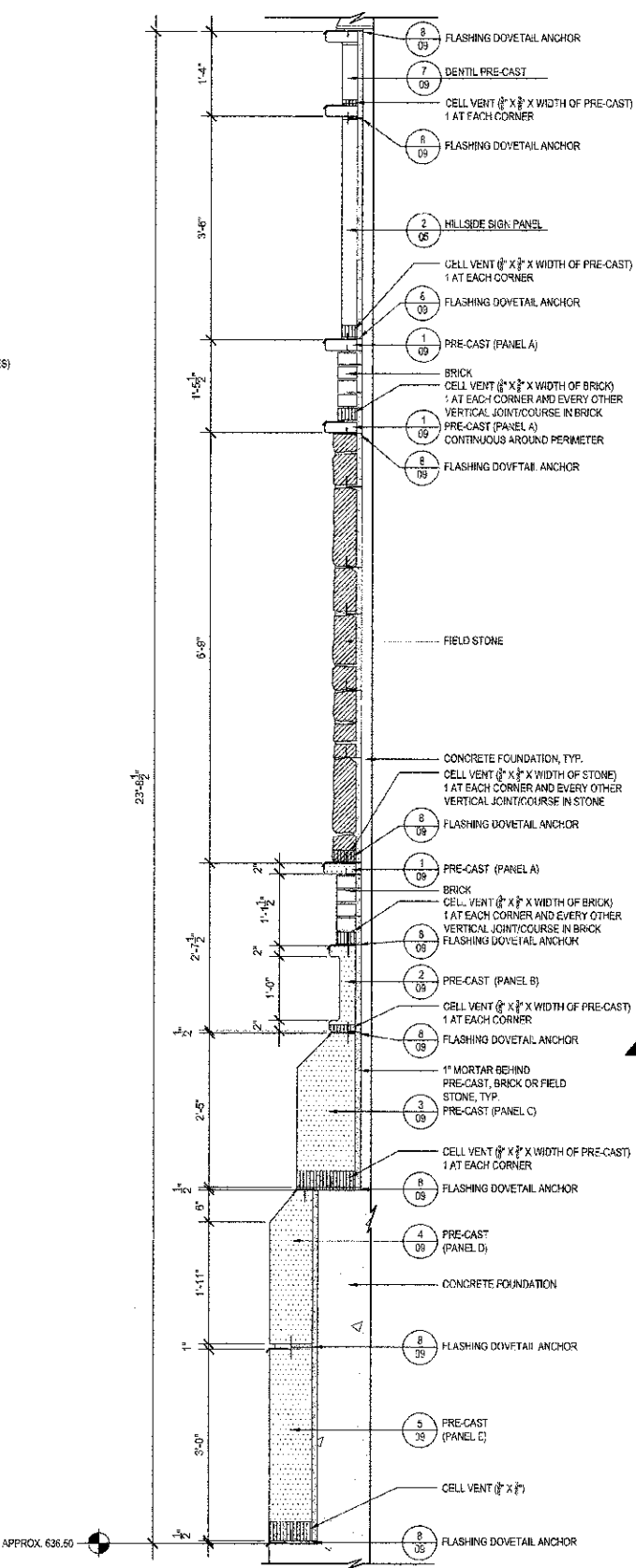


NOTE: SEE SHEETS 6, 7 AND 8 OF 11 FOR STRUCTURAL DETAILS

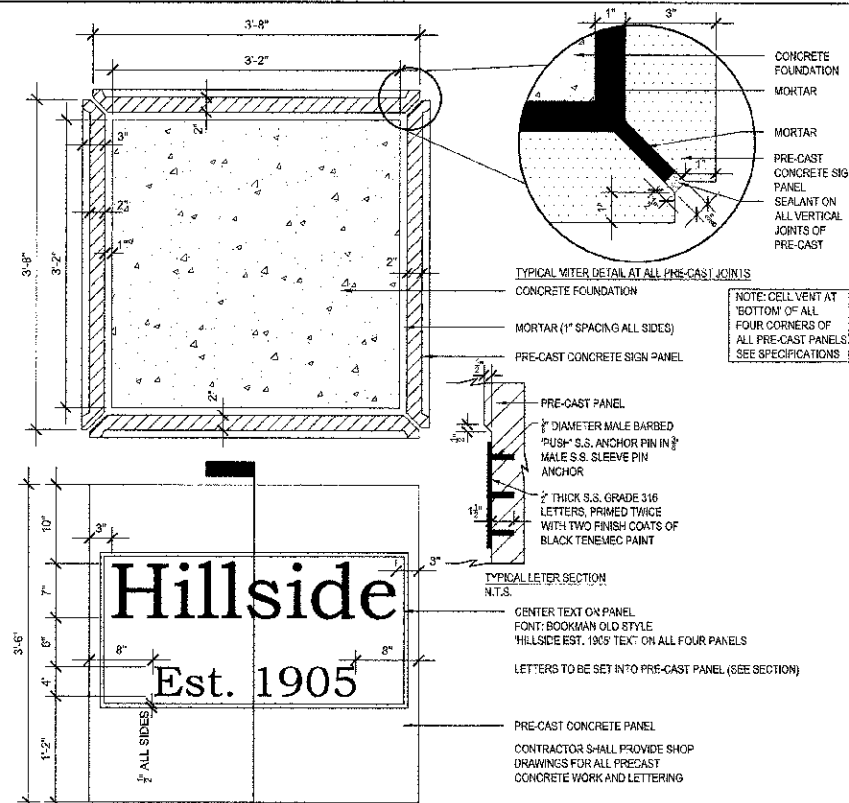
1 MONUMENT TYPE A & B (ELEVATION AND SECTION)
SCALE: 3/8" = 1'-0"



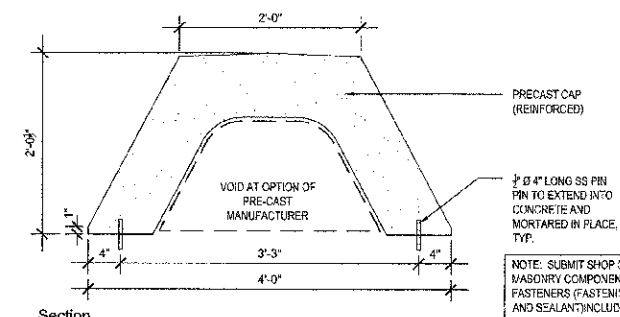
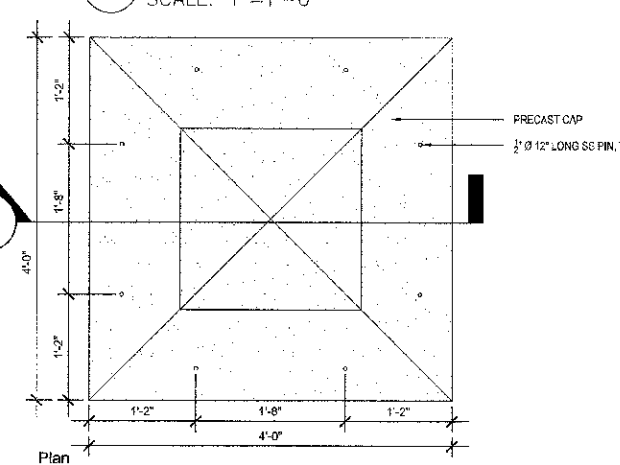
3 MONUMENT PLAN VIEW
SCALE: 1" = 20'-0"



4 PRE-CAST ENLARGEMENT
SCALE: 3/4" = 1'-0"



2 HILLSIDE SIGN PANEL
SCALE: 1" = 1'-0"



5 MONUMENT CAP
SCALE: 1" = 1'-0"

NOTE: SUBMIT SHOP DRAWINGS FOR ALL MASONRY AND MASONRY COMPONENTS INDICATING MATERIAL, MATERIAL SIZE, FASTENERS (FASTENING METHODS, REINFORCEMENT, MORTAR AND SEALANT) INCLUDING PRECAST STONE.
NO LIFTING ANCHORS SHALL BE PERMITTED - ALL PRECAST SHALL BE SET & HANDLED USING NYLON STRAPS.
ALL MASONRY AND MATERIALS USED IN SETTING AND FASTENING SHALL BE REQUIRED TO HAVE A STATE OF ILLINOIS STRUCTURAL ENGINEER'S SEAL CERTIFYING STRUCTURAL INTEGRITY.

FILE NAME: 081113
LAYOUT
DRAWN
REVIEWED

USER NAME =	DESIGNED -- RMMW	REVISED --
PILOT SCALE =	DRAWN -- MW	REVISED --
PLOT DATE = 12/02/12	CHECKED -- RM	REVISED --
	DATE -- 12/17/2012	REVISED --

STATE OF ILLINOIS
DEPARTMENT OF TRANSPORTATION

VILLAGE OF HILLSIDE
MANNHEIM ROAD STREETSCAPE
PROPOSED MONUMENT PLAN

F.A.P. RTE. 330	SECTION 08-00045-00-LS	COUNTY COOK	TOTAL SHEETS 12	SHEET NO. 05
SCALE: AS SHOWN				CONTRACT NO. 63793
SHEET NO. 05 OF 12 SHEETS				STA. 64+00.00 TO STA. 68+50.00

GENERAL NOTES

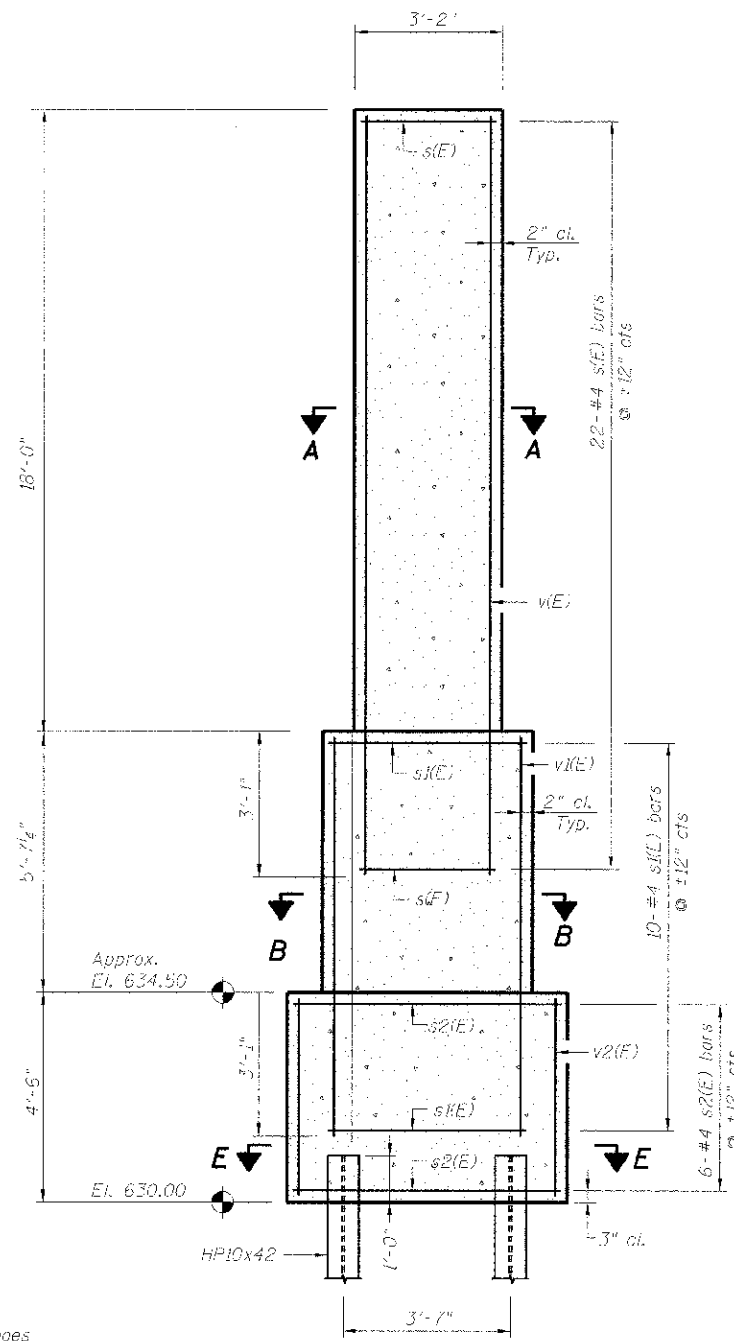
Reinforcement bars shall conform to the requirements ASTM A 706 GR 60.
Reinforcement bars designated (F) shall be epoxy coated.

DESIGN SPECIFICATIONS

2010 AASHTO LRFD Bridge Design Specifications

DESIGN STRESSES

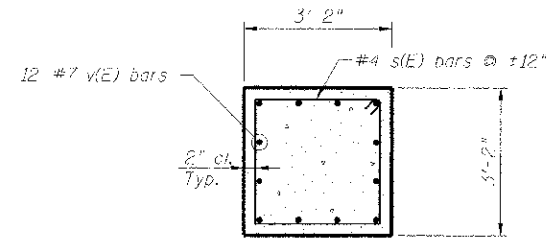
FIELD UNITS
 $f'_c = 3,500$ psi
 $f_y = 60,000$ psi (Reinforcement)



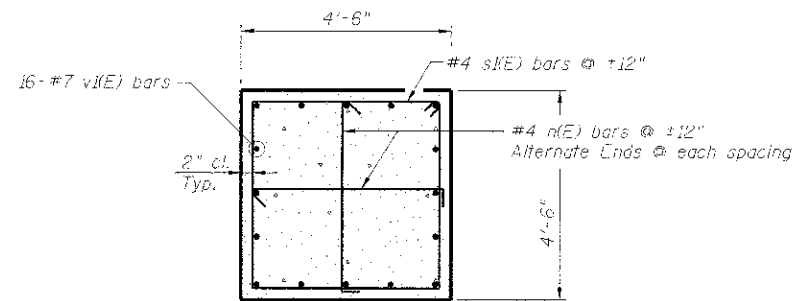
MONUMENT, TYPE A

PILE DATA

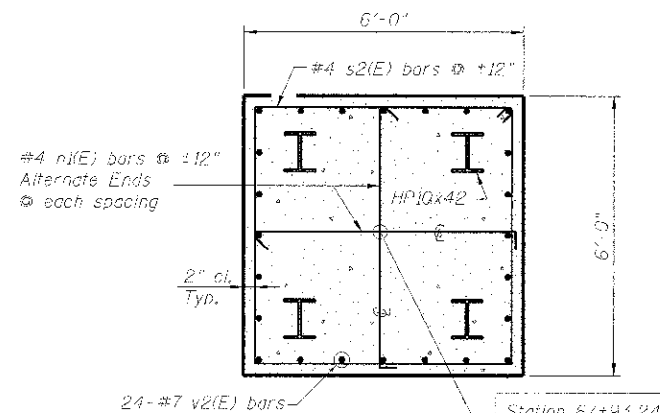
Type: HP10x42 with pile shoes
 Nominal Required Bearing: 535 Kips
 Factored Resistance Available: 184 Kips
 Estimated Length: 27'-0"
 No. Production Piles: 3
 No. Test Piles: 1
 Estimated Top of Rock Elevation: 608.50



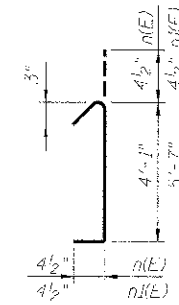
SECTION A-A



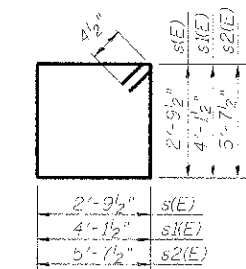
SECTION B-B



SECTION E-E



BAR n(E)



BAR s(E)

**MONUMENT, TYPE A
BILL OF MATERIAL**

Bar	No.	Size	Length	Shape
n(E)	20	4	4'-10"	┌┐
n(E)	12	4	6'-4"	┌┐
s(F)	18	4	11'-11"	□
s(E)	10	4	17'-3"	□
s2(E)	6	4	23'-3"	□
v(F)	12	7	20'-11"	▬
v(E)	16	7	8'-6 1/2"	▬
v2(E)	24	7	4'-1"	▬
Structure Excavation		Cu. Yd.	16	
Concrete Structures		Cu. Yd.	16.9	
Reinforcement Bars, Epoxy Coated		Pound	1490	
Furnishing Steel Piles: HP 10x42		Foot	81	
Driving Piles		Foot	81	
Test Pile: HP 10x42		Each	1	
Pile Shoes		Each	4	

DESIGN SPECIFICATIONS

2010 AASHTO LRFD Bridge Design Specifications

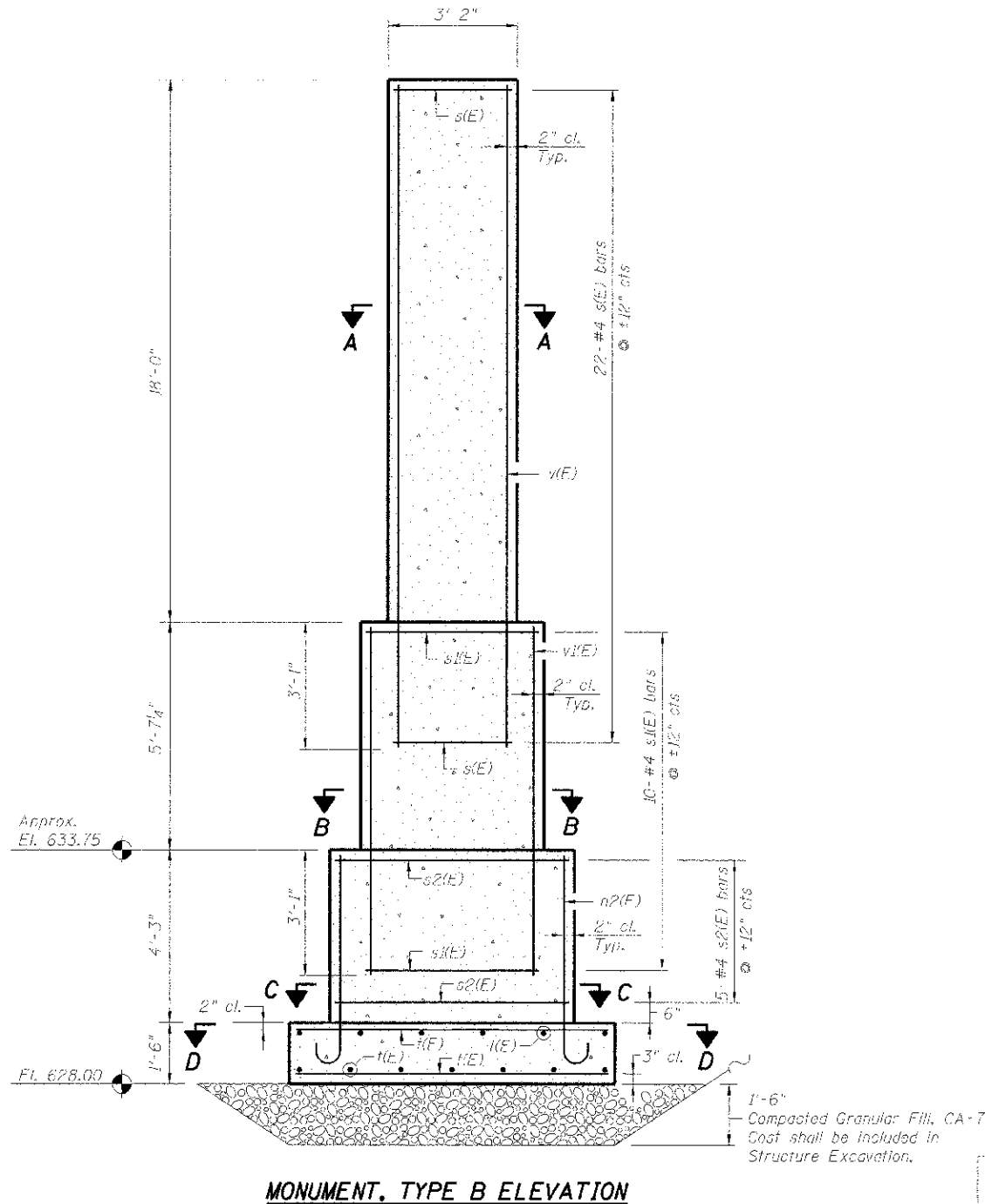
DESIGN STRESSES

FIELD UNITS

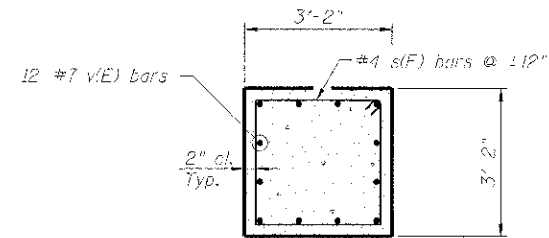
$f'_c = 3,500$ psi
 $f_y = 60,000$ psi (Reinforcement)

GENERAL NOTES

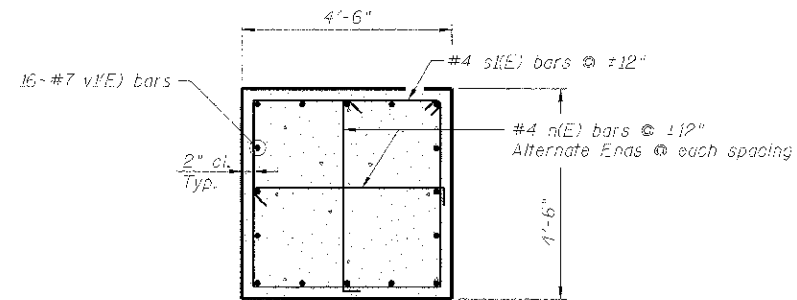
Reinforcement bars shall conform to the requirements ASTM A 706 GR 60.
 Reinforcement bars designated (E) shall be epoxy coated.



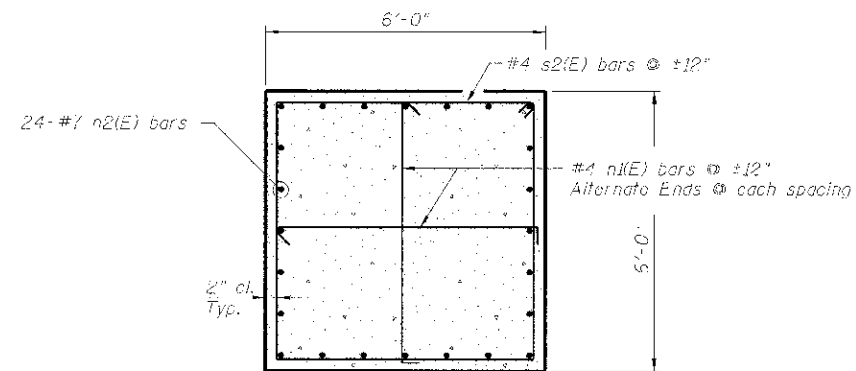
MONUMENT, TYPE B ELEVATION



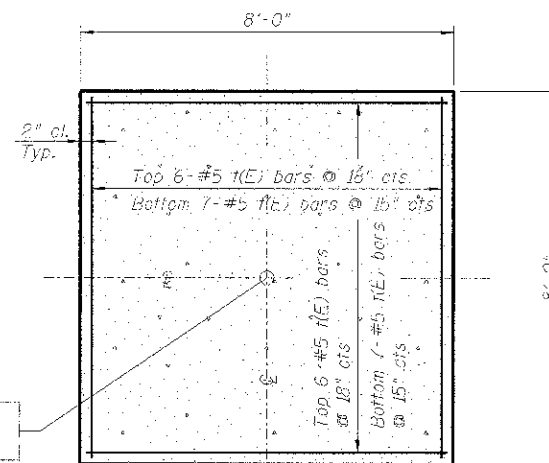
SECTION A-A



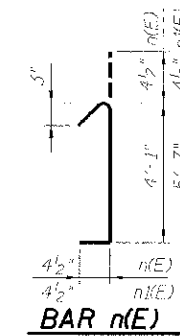
SECTION B-B



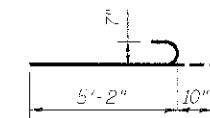
SECTION C-C



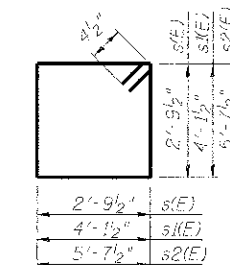
SECTION D-D - FOOTING PLAN



BAR n(E)



BAR n2(E)



BAR s(E)

**MONUMENT, TYPE B
BILL OF MATERIAL**

Bar	No.	Size	Length	Shape
n(E)	20	4	4'-10"	U
n1(E)	10	4	6'-4"	U
n2(E)	24	7	6'-0"	U
s(E)	18	4	11'-11"	□
s1(E)	10	4	17'-3"	□
s2(E)	5	4	23'-3"	□
v(E)	26	5	7'-8"	—
v1(E)	12	7	20'-11"	—
v2(E)	16	7	8'-6 1/2"	—
Structure Excavation		Cu. Yd.	39	
Concrete Structures		Cu. Yd.	20.1	
Reinforcement Bars, Epoxy Coated		Pound	1770	

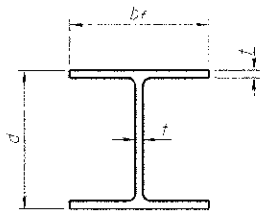
FILE NAME =	USER NAME =	DESIGNED <i>JCT</i>	REVISED -
		CHECKED <i>JCT</i>	REVISED -
		DRAWN <i>ROD</i>	REVISED -
		CHECKED - 12/17/2012	REVISED -

STATE OF ILLINOIS
DEPARTMENT OF TRANSPORTATION

VILLAGE OF HILLSIDE
MANNHEIM ROAD STREETScape & I-290 BRIDGE IMPROVEMENTS
MONUMENT, TYPE B ELEVATION PLAN

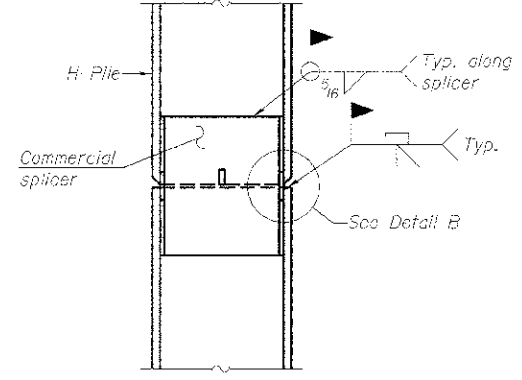
F.A.P. RTE. 330	SECTION 06-00045-00-LS	COUNTY COOK	TOTAL SHEETS 11	SHEET NO. 07
CONTRACT NO. 63783				ILLINOIS FED. AID PROJECT

SHEET NO. 07 OF 12 SHEETS

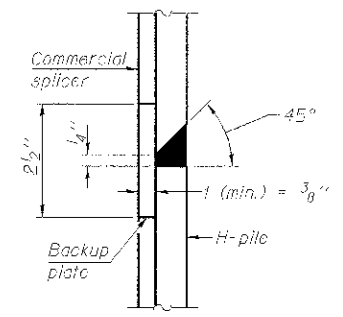


STEEL PILE TABLE

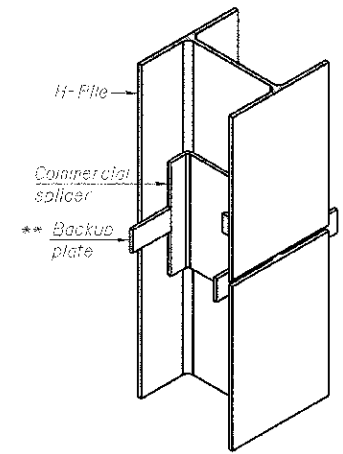
Designation	Depth d	Flange width b _f	Web and Flange thickness t	Encasement diameter A
HP 14x117	14 1/4"	14 7/8"	3/8"	30"
x102	14"	14 3/4"	5/8"	30"
x89	13 7/8"	14 3/4"	5/8"	30"
x73	13 5/8"	14 5/8"	1/2"	30"
HP 12x84	12 1/4"	12 1/4"	5/8"	24"
x74	12 1/4"	12 1/4"	5/8"	24"
x63	12"	12 1/8"	1/2"	24"
x53	11 3/4"	12"	7/8"	24"
HP 10x57	10"	10 1/4"	5/8"	24"
x42	9 1/4"	10 3/8"	7/16"	24"
HP 8x35	8"	8 1/4"	7/16"	18"



ELEVATION

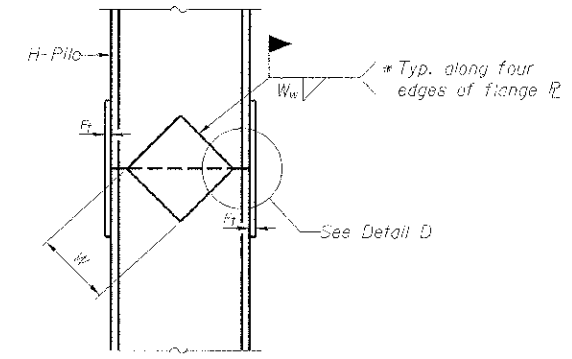


DETAIL "B"

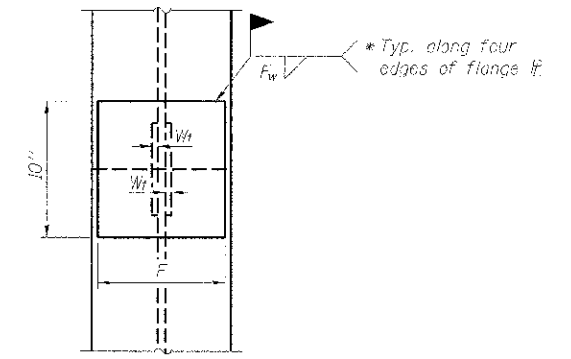


ISOMETRIC VIEW

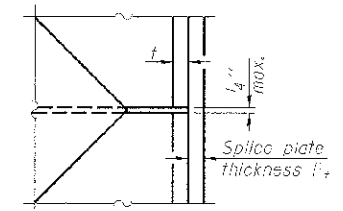
WELDED COMMERCIAL SPLICE



ELEVATION



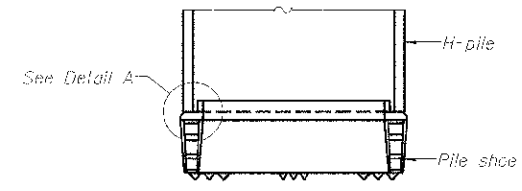
END VIEW



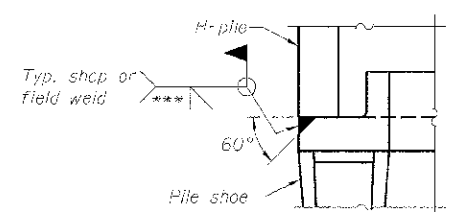
DETAIL D

WELDED PLATE FIELD SPLICE

Designation	F	F _t	F _w	W	N _t	W _w
HP 14x117	12 1/2"	1"	7/8"	7 3/4"	5/8"	1/2"
x102	12 1/2"	7/8"	3/4"	7 3/4"	5/8"	1/2"
x89	12 1/2"	3/4"	1/2"	7 3/4"	5/8"	1/2"
x73	12 1/2"	5/8"	9/16"	7 3/4"	5/8"	1/2"
HP 12x84	10"	7/8"	1/2"	6 1/2"	5/8"	1/2"
x74	10"	7/8"	1/2"	6 1/2"	5/8"	1/2"
x63	10"	5/8"	1/2"	6 1/2"	1/2"	3/8"
x53	10"	5/8"	1/2"	6 1/2"	1/2"	3/8"
HP 10x57	8"	3/4"	9/16"	5 1/4"	1/2"	3/8"
x42	8"	5/8"	3/16"	5 1/4"	1/2"	3/8"
HP 8x35	7"	5/8"	7/16"	4 1/4"	1/2"	3/8"

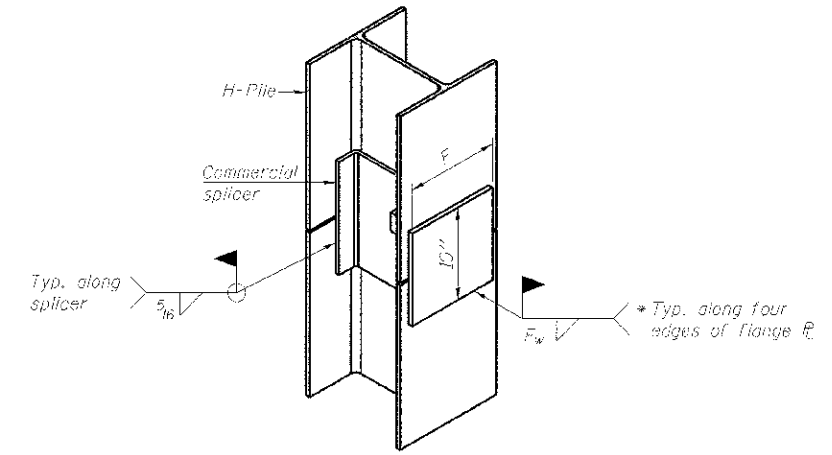


ELEVATION



DETAIL A

H-PILE SHOE ATTACHMENT



ISOMETRIC VIEW

WELDED COMMERCIAL SPLICE ALTERNATE

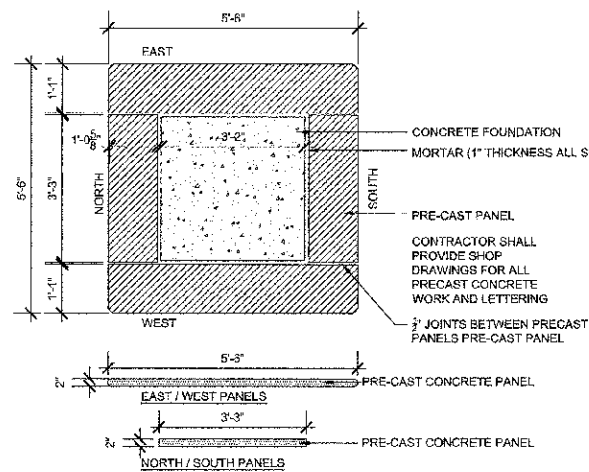
- * Interrupt welds 1/4" from end of web and/or each flange.
- ** Remove portions of backup plates that extend outside the flanges.
- *** Weld size per pile shoe manufacturer (5/16" min.).

Note:
The steel H-piles shall be according to AASHTO M270 Grade 50.

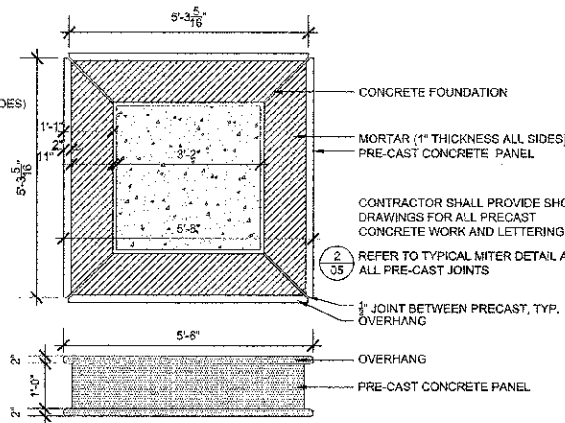
F-HP

1-1-10

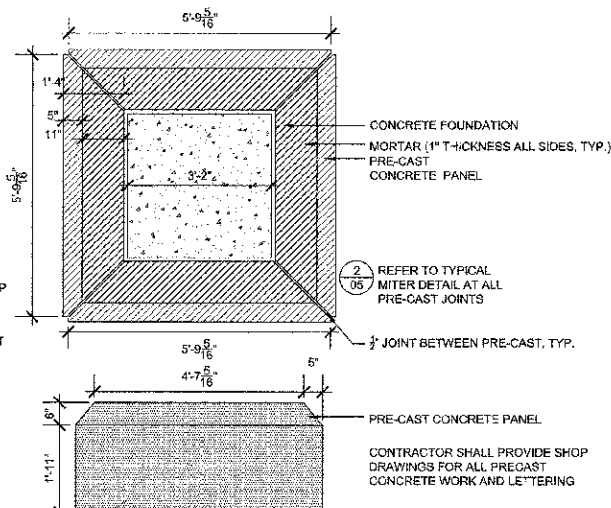
FILE NAME =	USER NAME =	DESIGNED JCT	REVISED -	STATE OF ILLINOIS DEPARTMENT OF TRANSPORTATION	VILLAGE OF HILLSIDE MANNHEIM ROAD STREETSCAPE & I-290 BRIDGE IMPROVEMENTS PILE DETAILS	F.A.P. RTE. 330	SECTION 06-00045-00-LS	COUNTY COOK	TOTAL SHEETS 12	SHEET NO. 08	
DESIGNED JCT	CHECKED JCT	REVISED -									
DRAWN ROD	REVISED -	REVISED -									
CHECKED - 12/13/2012	REVISED -	REVISED -									
SHEET NO. 08 OF 12 SHEETS						CONTRACT NO. 63783 ILLINOIS FED. AID PROJECT					



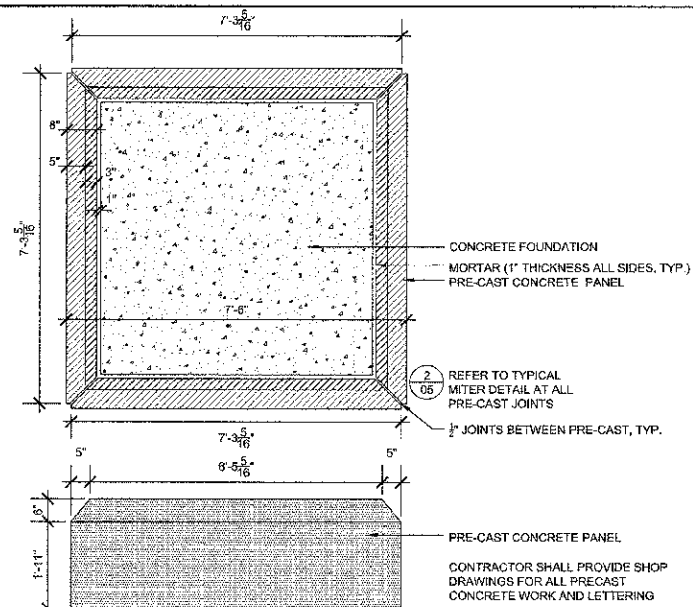
1 PRE-CAST PANEL A
SCALE: 1/2"=1'-0"



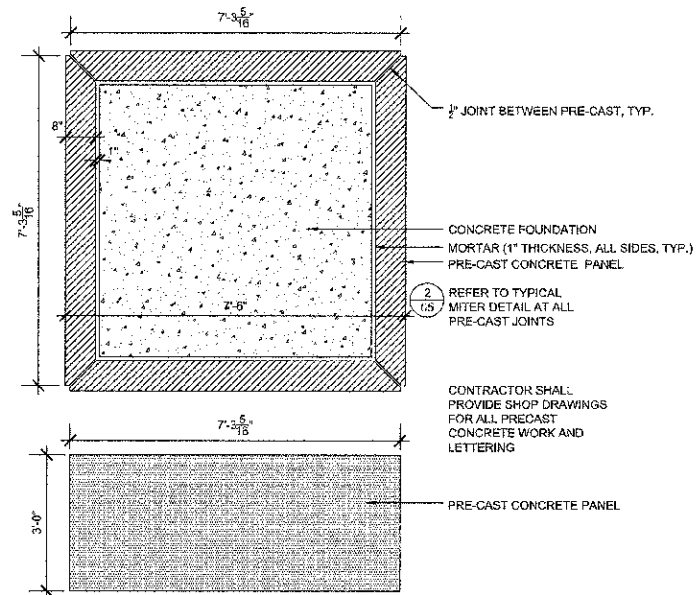
2 PRE-CAST PANEL B
SCALE: 1/2"=1'-0"



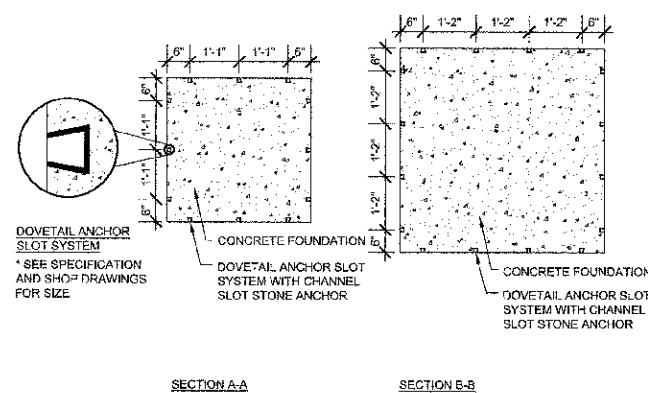
3 PRE-CAST PANEL C
SCALE: 1/2"=1'-0"



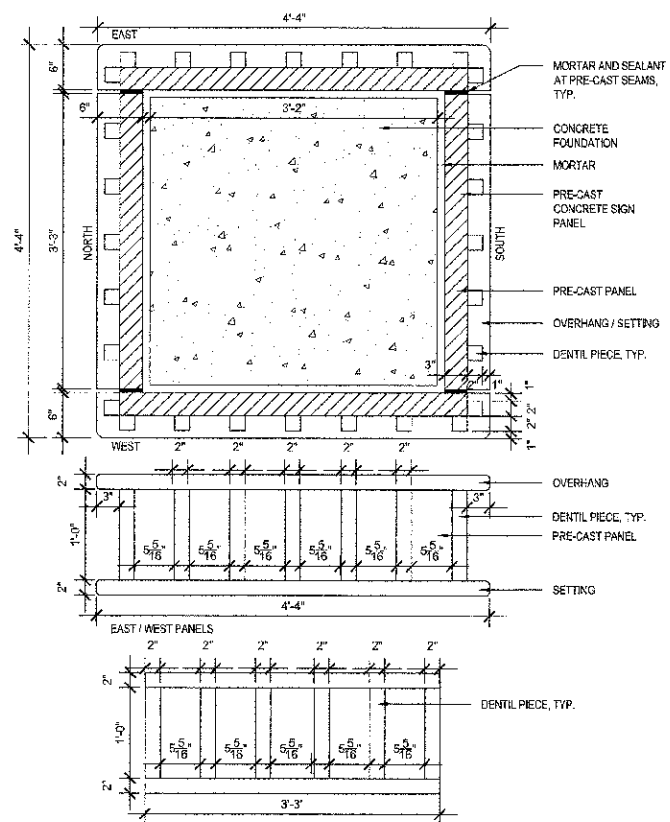
4 PRE-CAST PANEL D
SCALE: 1/2"=1'-0"



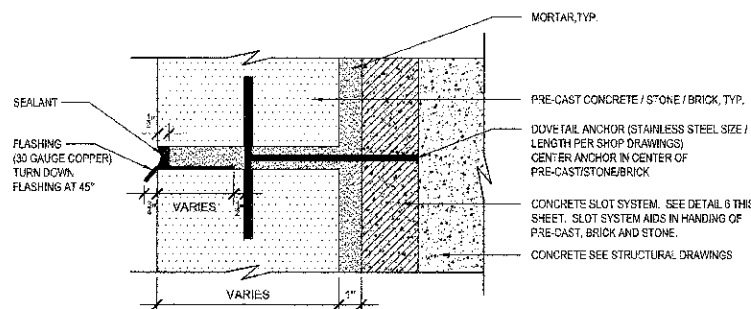
5 PRE-CAST PANEL E
SCALE: 1/2"=1'-0"



6 PRE-CAST ANCHORING
SCALE: 1/2"=1'-0"



7 DENTIL PRECAST
SCALE: 3"=1'-0"



8 FLASHING DOVETAIL ANCHOR (PRE-CAST/STONE/BRICK)
SCALE: 3"=1'-0"

NOTE: SUBMIT SHOP DRAWINGS FOR ALL MASONRY AND MASONRY COMPONENTS INDICATING MATERIAL, MATERIAL SIZE, FASTENERS (FASTENING METHODS, REINFORCEMENT, MORTAR AND SEALANT) INCLUDING PRECAST STONE.

NO LIFTING ANCHORS SHALL BE PERMITTED - ALL PRECAST SHALL BE SET / HANDLED USING NYLON STRAPS.

ALL MASONRY AND MATERIALS USED IN SETTING AND FASTENING SHALL BE REQUIRED TO HAVE A STATE OF ILLINOIS STRUCTURAL ENGINEER'S SEAL CERTIFYING STRUCTURAL INTEGRITY.

FILE NAME: 08-FILED\$
LAYOUT
DRAWN
REVIEWED

USER NAME =	DESIGNED -- RM/MW	REVISED --
PLOT SCALE =	DRAWN -- MW	REVISED --
PLOT DATE = 12/10/2012	CHECKED -- RM	REVISED --
	DATE -- 12/17/2012	REVISED --

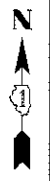
STATE OF ILLINOIS
DEPARTMENT OF TRANSPORTATION

VILLAGE OF HILLSIDE
MANNHEIM ROAD STREETSCAPE
MONUMENT DETAILS

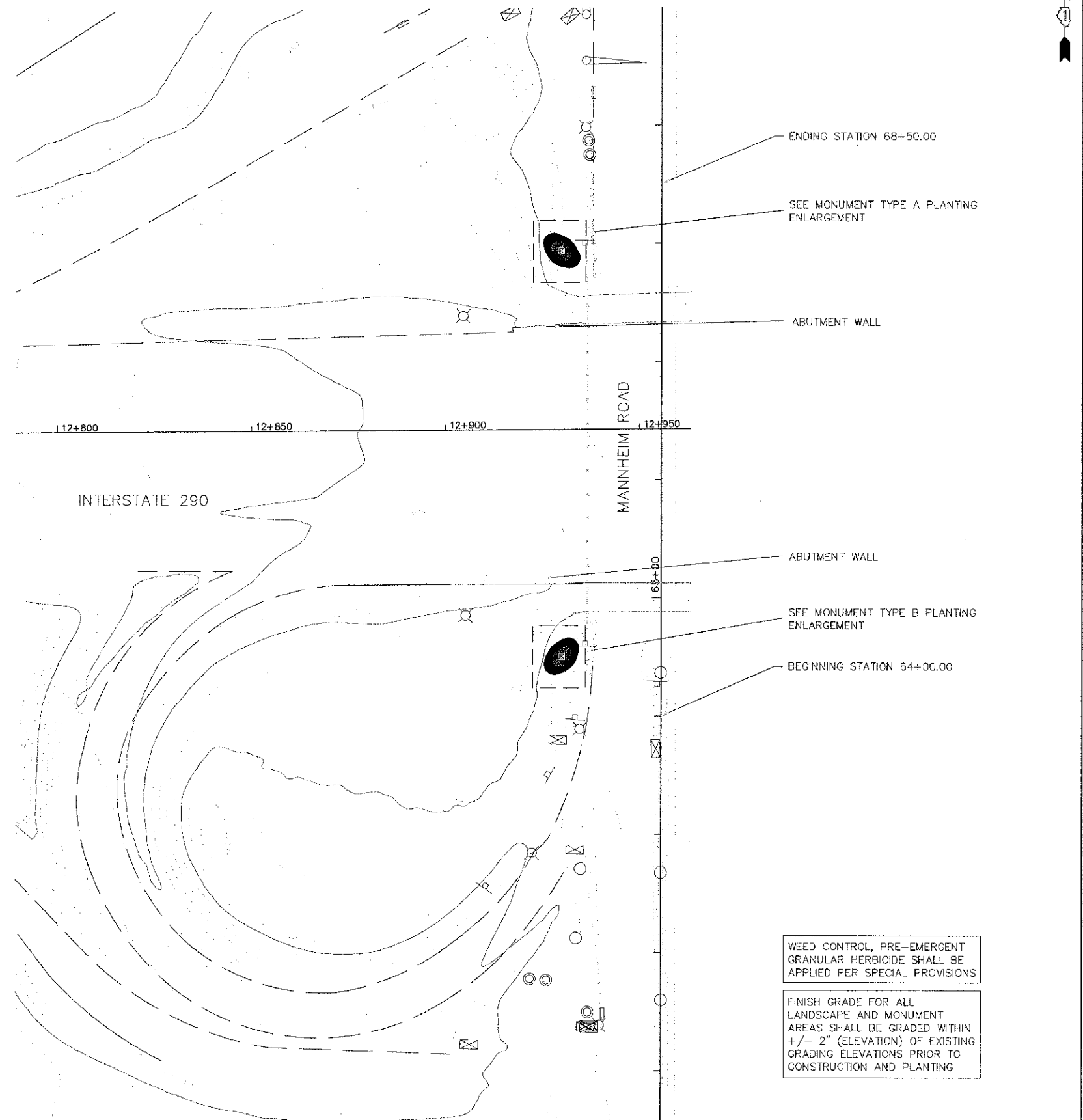
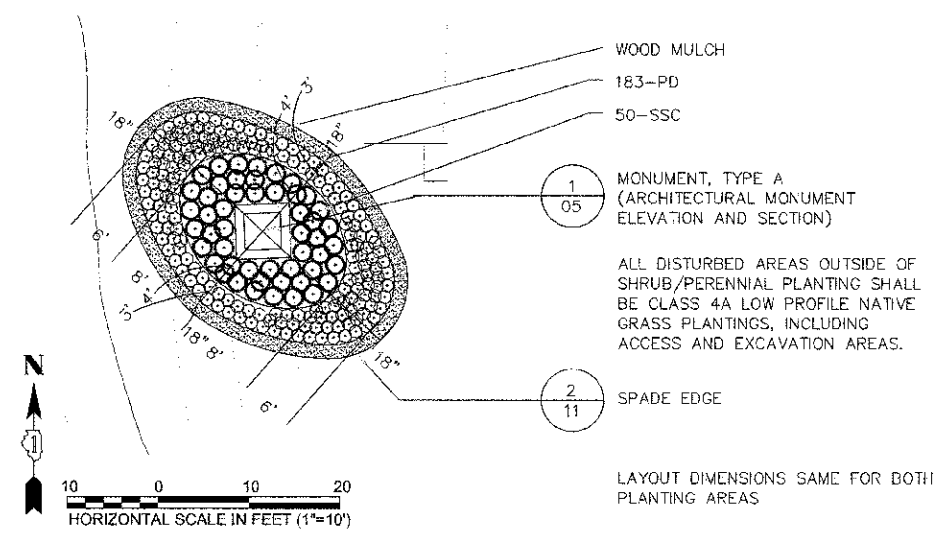
F.A.P. RTE. 330	SECTION 06-00345-00-LS	COUNTY COOK	TOTAL SHEETS 12	SHEET NO. 09
SCALE: AS SHOWN			CONTRACT NO. 83783	

SCALE: AS SHOWN SHEET NO. 09 OF 12 SHEETS STA. 84+00.00 TO STA. 88+50.00

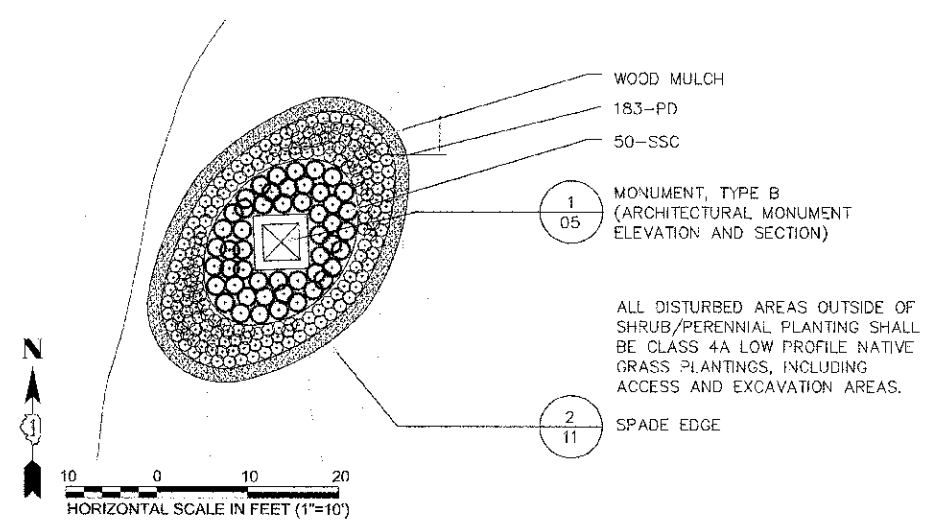
50 0 50 100
HORIZONTAL SCALE IN FEET (1"=50')



MONUMENT TYPE A PLANTING ENLARGEMENT



MONUMENT TYPE B PLANTING ENLARGEMENT



PAY ITEM	DESCRIPTION	UNIT	TOTAL QUANTITY	CONSTRUCTION TYPE CODE	
				0046	0051
21101645	TOPSOIL FURNISH AND PLACE, 12"	SY	106	106	
K1005481	SHREDDED BARK MULCH 1.5"	SY	135	135	
K0012993	PERENNIAL PLANTS, ORNAMENTAL TYPE, 3-GALLON POT	UNIT	4.66	4.66	
K00126550	PERENNIAL PLANT CARE	SQ YD	700	700	
K0029634	WEED CONTROL, PRE-EMERGENT GRANULAR HERBICIDE	POUNDS	5.00	5.00	

NOTE: LANDSCAPE PAY ITEMS LOCATED ON LANDSCAPE DETAILS SHEET 11 OF 12

WEED CONTROL, PRE-EMERGENT GRANULAR HERBICIDE SHALL BE APPLIED PER SPECIAL PROVISIONS

FINISH GRADE FOR ALL LANDSCAPE AND MONUMENT AREAS SHALL BE GRADED WITHIN +/- 2" (ELEVATION) OF EXISTING GRADING ELEVATIONS PRIOR TO CONSTRUCTION AND PLANTING

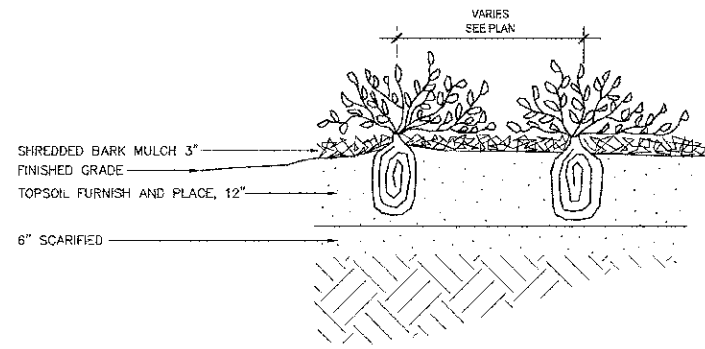
FILE NAME = 81E113
LAYOUT
DRAWN
REVIEWED

USER NAME =	DESIGNED -- RM/MW	REVISED --
PLOT SCALE = 1"=50'	DRAWN -- MW	REVISED --
PLOT DATE = 12/10/2012	CHECKED -- RM	REVISED --
	DATE -- 12/17/2012	REVISED --

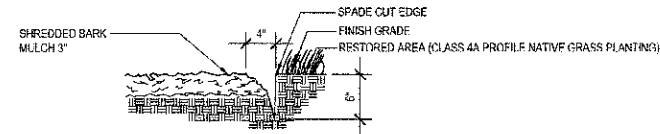
STATE OF ILLINOIS
DEPARTMENT OF TRANSPORTATION

VILLAGE OF HILLSIDE
MANNHEIM ROAD STREETSCAPE
LANDSCAPE PLAN
SCALE: AS SHOWN SHEET NO. 10 OF 12 SHEETS STA. 64+00.00 TO STA. 68+50.00

F.A.P. RTE. 330	SECTION 06-00045-00-LS	COUNTY COOK	TOTAL SHEETS 12	SHEET NO. 10
ILLINOIS			CONTRACT NO. 63783	



1 SHRUB / PERENNIAL PLANTING
SCALE: 1"=1'-0"



2 SPADE EDGE
SCALE: 1"=1'-0"

PLANTING SCHEDULE

PAY ITEM	DESCRIPTION	BOTANICAL NAME	COMMON NAME	CODE	SPACING	SIZE	UNIT	QUANTITY
K0012883	PERENNIAL PLANTS, ORNAMENTAL TYPE, 3-GALLON POT							
		SPORBOLLUS HETEROLEPIS	PRAIRIE DROPSEED	PD	18"	#3	UNIT	3.66
		SCHIZACHYRIUM SCOPARIUM 'CAROUSEL'	LITTLE BLUESTEM 'CAROUSEL'	SSC	24"	#3	UNIT	1.00

3 PLANTING SCHEDULE

FILE NAME = \$FILES\$
LAYOUT
DRAWN
REVIEWED

USER NAME =	DESIGNED -- RMMW	REVISED --
	DRAWN -- MW	REVISED --
PLOT SCALE =	CHECKED -- RM	REVISED --
PLOT DATE = 12/10/2012	DATE -- 12/17/2012	REVISED --

STATE OF ILLINOIS
DEPARTMENT OF TRANSPORTATION

VILLAGE OF HILLSIDE
MANNHEIM ROAD STREETSCAPE
LANDSCAPE DETAILS

SCALE: AS SHOWN SHEET NO. 11 OF 12 SHEETS STA. 64+00.00 TO STA. 68+50.00

F.A.P. RTE.	SECTION	COUNTY	TOTAL SHEETS	SHEET NO.
330	06-00045-00-LS	COOK	12	11
CONTRACT NO. 63783			ILLINOIS	

