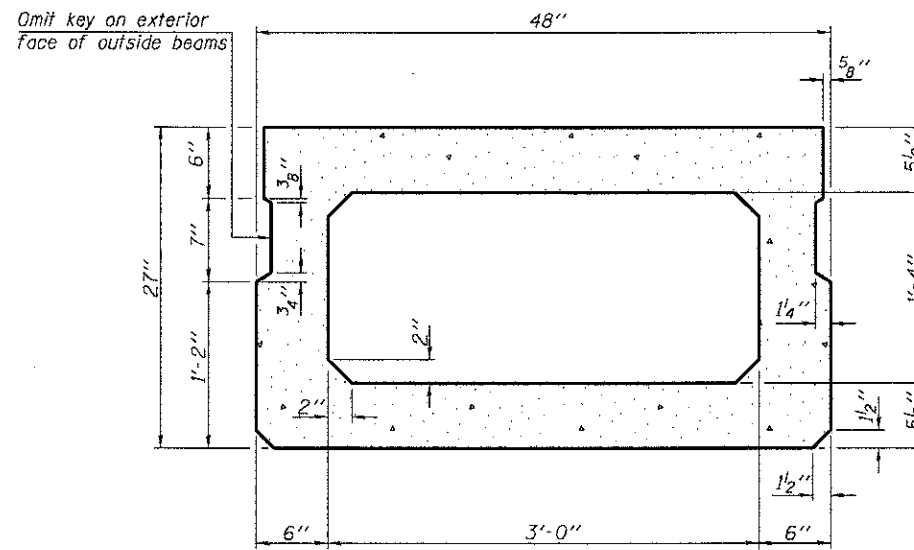
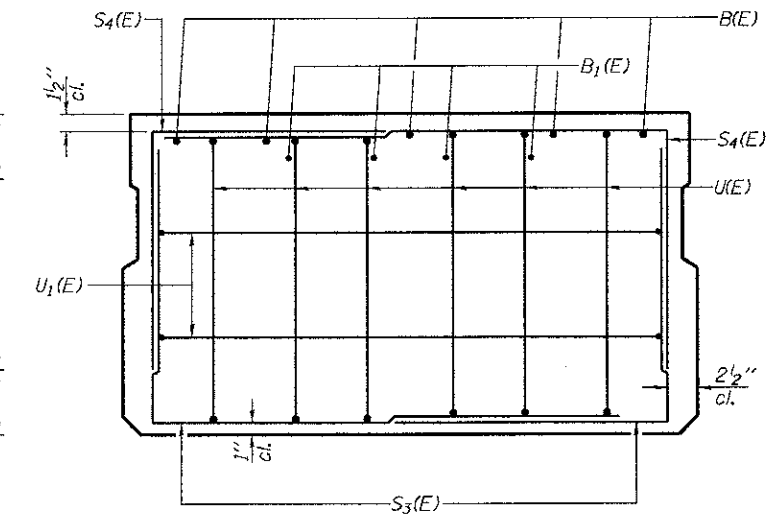


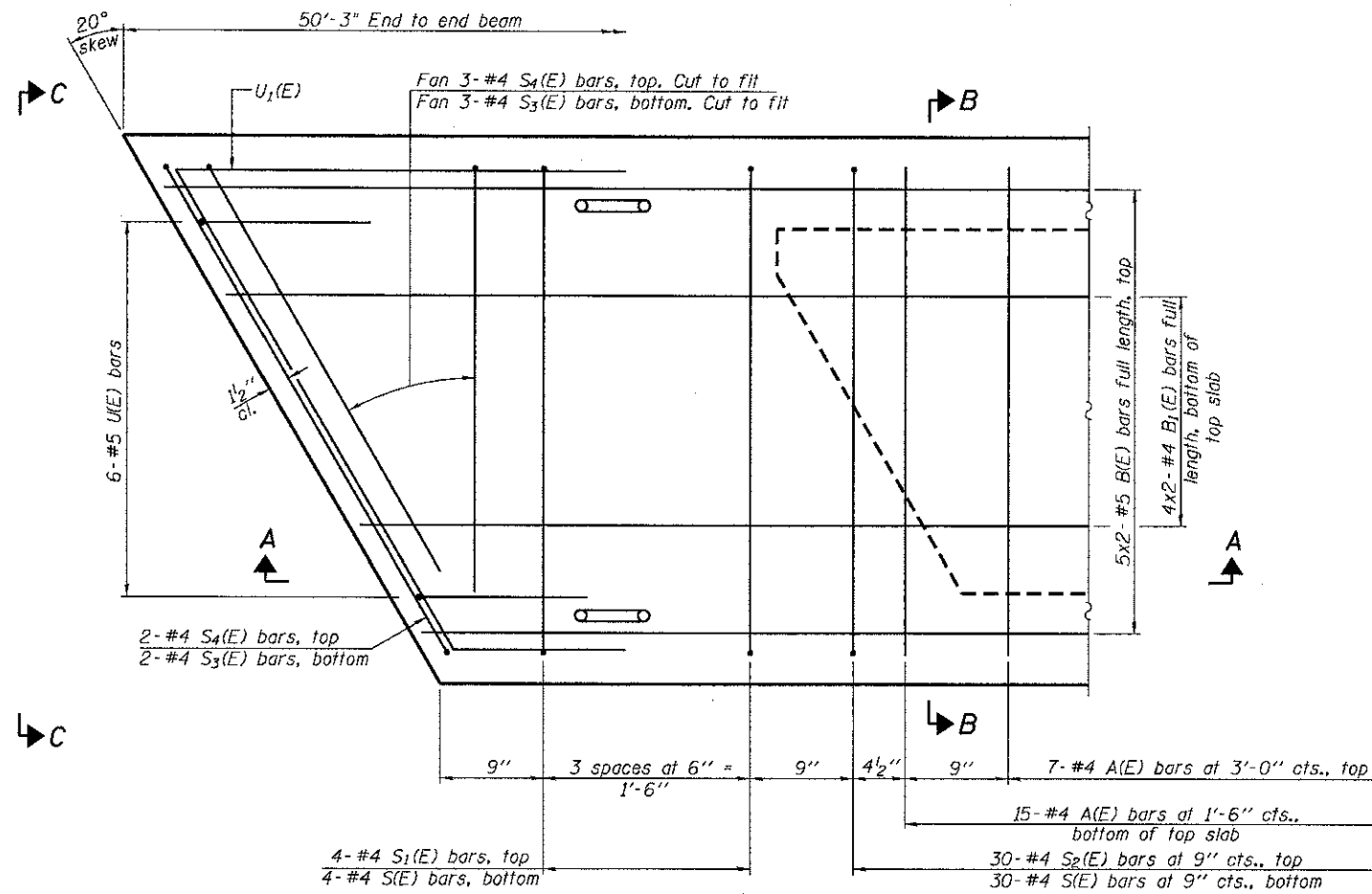
SECTION A-A



SECTION B-B
(Showing dimensions)

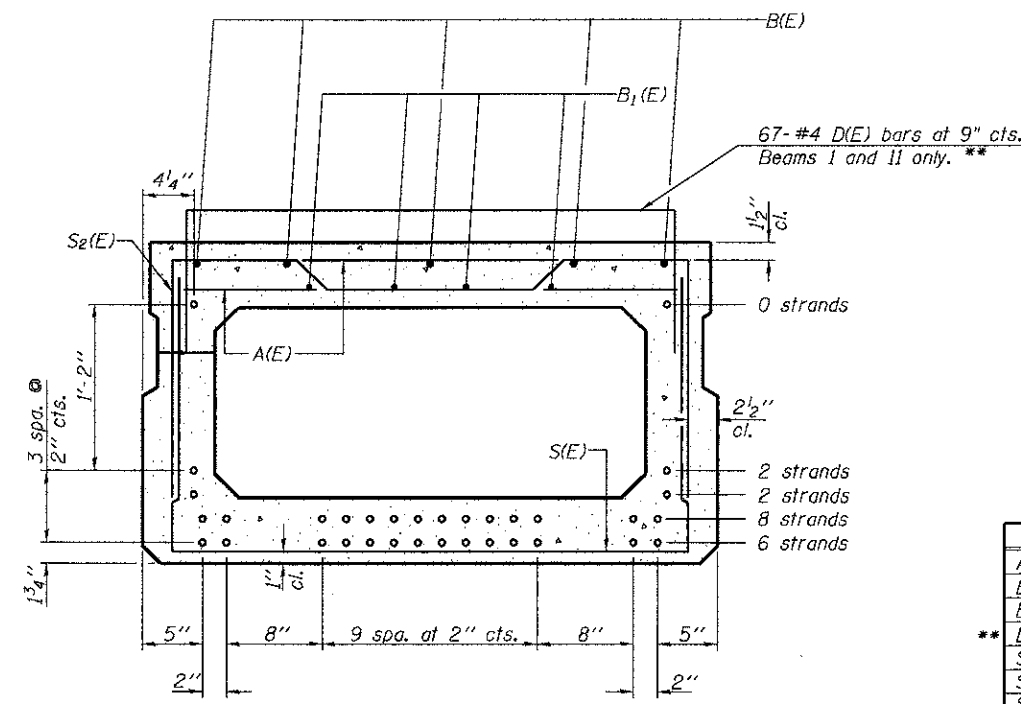


VIEW C-C



PLAN VIEW

Note: Spacing of S(E) and S2(E) bars may be adjusted up to 4" in the immediate area of the transverse tie diaphragms to miss the block outs for the transverse ties.



SECTION B-B

(Showing reinforcement and permissible strand locations)

Note: Place the number of strands specified in each row symmetrically about the centerline of beam in the permissible strand locations shown.

BAR LIST
ONE BEAM ONLY
(For information only)

Bar	No.	Size	Length	Shape
A(E)	44	#4	3'-7"	—
B(E)	10	#5	26'-0"	—
B1(E)	8	#4	26'-0"	—
D(E)	67	#4	6'-1"	□
S(E)	68	#4	7'-5"	□
S1(E)	8	#4	6'-11"	□
S2(E)	60	#4	7'-2"	□
S3(E)	10	#4	4'-11"	□
S4(E)	10	#4	4'-8"	□
U(E)	12	#5	4'-6"	□
U1(E)	4	#4	7'-6"	□

NOTES:

See sheet 6 of 18 for additional details and Bill of Material.

Bars indicated thus 4x2-#4 etc. indicates 4 lines of bars with 2 lengths per line.

** Beams I and II only

MINIMUM BAR LAP

#4 bar = 2'-0"
#5 bar = 2'-6"

PD-2748-R

7-1-10



USER NAME	DESIGNED	REVISION
	RJP	
	MJT	
	JTF	
	MJT	

STATE OF ILLINOIS
DEPARTMENT OF TRANSPORTATION

27" x 48" PPC DECK BEAM
STRUCTURE NO. 022-3041

SHEET NO. 5 OF 18 SHEETS

F.A.P. RTE.	SECTION	COUNTY	TOTAL SHEETS	SHEET NO.
	08-01120-00-BR	DUPAGE	38	21
CONTRACT NO. 63785				

ILLINOIS FED. AID PROJECT