

**NORTH EDGE OF SHOULDER**

Location	Station	Offset	Theoretical Grade Elevations
W. End of East Appr. Slab	19+19.78	-16.00	679.30
A3	19+29.78	-16.00	679.08
A4	19+39.78	-16.00	678.84
E. End of East Appr. Slab	19+49.78	-16.00	678.57

**NORTH EDGE OF ROADWAY**

Location	Station	Offset	Theoretical Grade Elevations
W. End of East Appr. Slab	19+21.23	-12.00	679.33
A3	19+31.23	-12.00	679.11
A4	19+41.23	-12.00	678.86
E. End of East Appr. Slab	19+51.23	-12.00	678.59

**℄ FULLERTON AVENUE & P.G.L.**

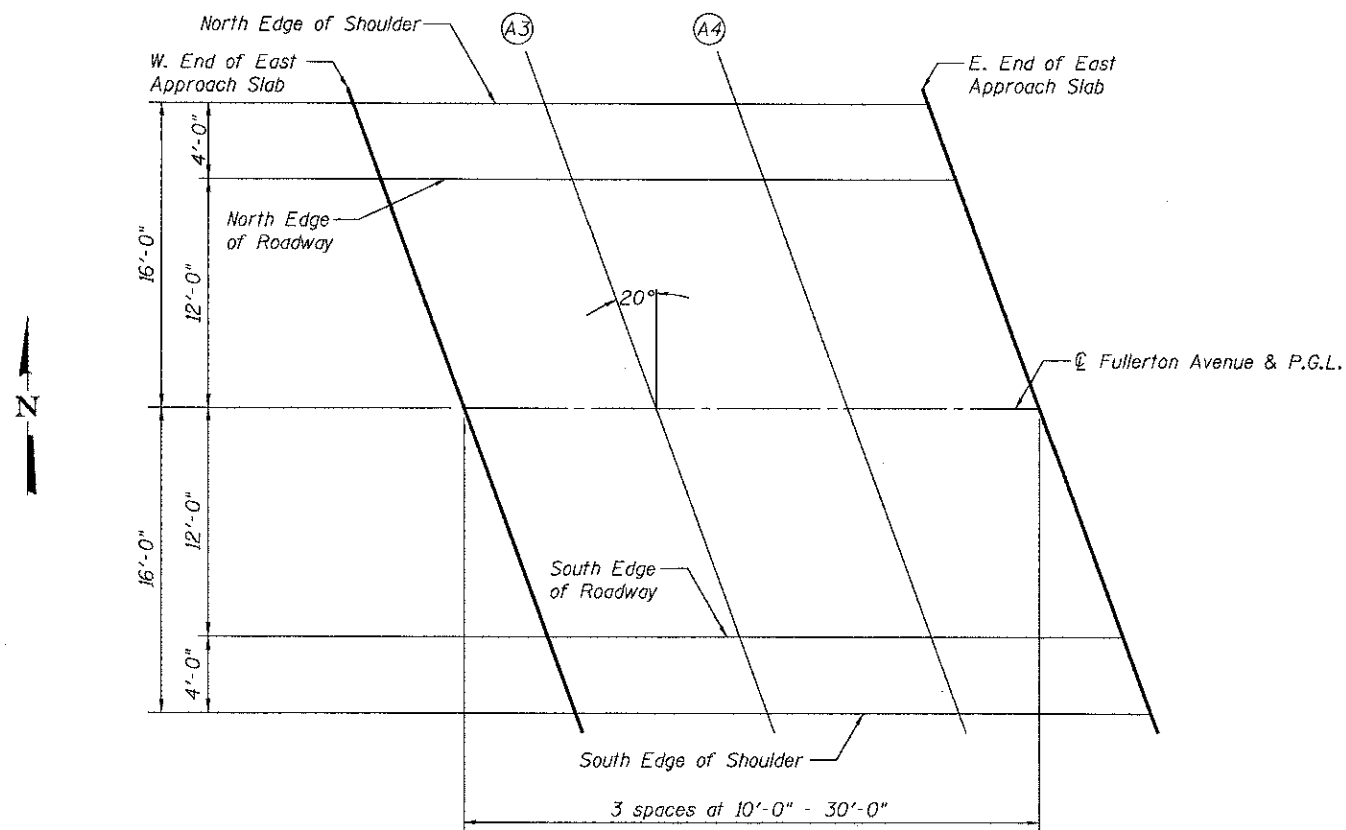
Location	Station	Offset	Theoretical Grade Elevations
W. End of East Appr. Slab	19+25.60	00.00	679.43
A3	19+35.60	00.00	679.20
A4	19+45.60	00.00	678.93
E. End of East Appr. Slab	19+55.60	00.00	678.64

**SOUTH EDGE OF ROADWAY**

Location	Station	Offset	Theoretical Grade Elevations
W. End of East Appr. Slab	19+29.97	12.00	679.14
A3	19+39.97	12.00	678.90
A4	19+49.97	12.00	678.62
E. End of East Appr. Slab	19+59.97	12.00	678.32

**SOUTH EDGE OF SHOULDER**

Location	Station	Offset	Theoretical Grade Elevations
W. End of East Appr. Slab	19+31.42	16.00	679.05
A3	19+41.42	16.00	678.80
A4	19+51.42	16.00	678.52
E. End of East Appr. Slab	19+61.42	16.00	678.21



**PLAN**  
East Approach



USER NAME =	DESIGNED - RJP	REVISIONS
PLOT SCALE =	CHECKED - MJT	REVISIONS
PLOT DATE =	DRAWN - JTF	REVISIONS
	CHECKED - MJT	REVISIONS

**STATE OF ILLINOIS**  
**DEPARTMENT OF TRANSPORTATION**

**TOP OF EAST APPROACH SLAB ELEVATIONS**  
**STRUCTURE NO. 022-3041**

SHEET NO. 8 OF 18 SHEETS

F.A.P. RTE.	SECTION	COUNTY	TOTAL SHEETS	SHEET NO.
	08-01120-00-BR	DUPAGE	38	24
CONTRACT NO. 63785			ILLINOIS FED. AID PROJECT	