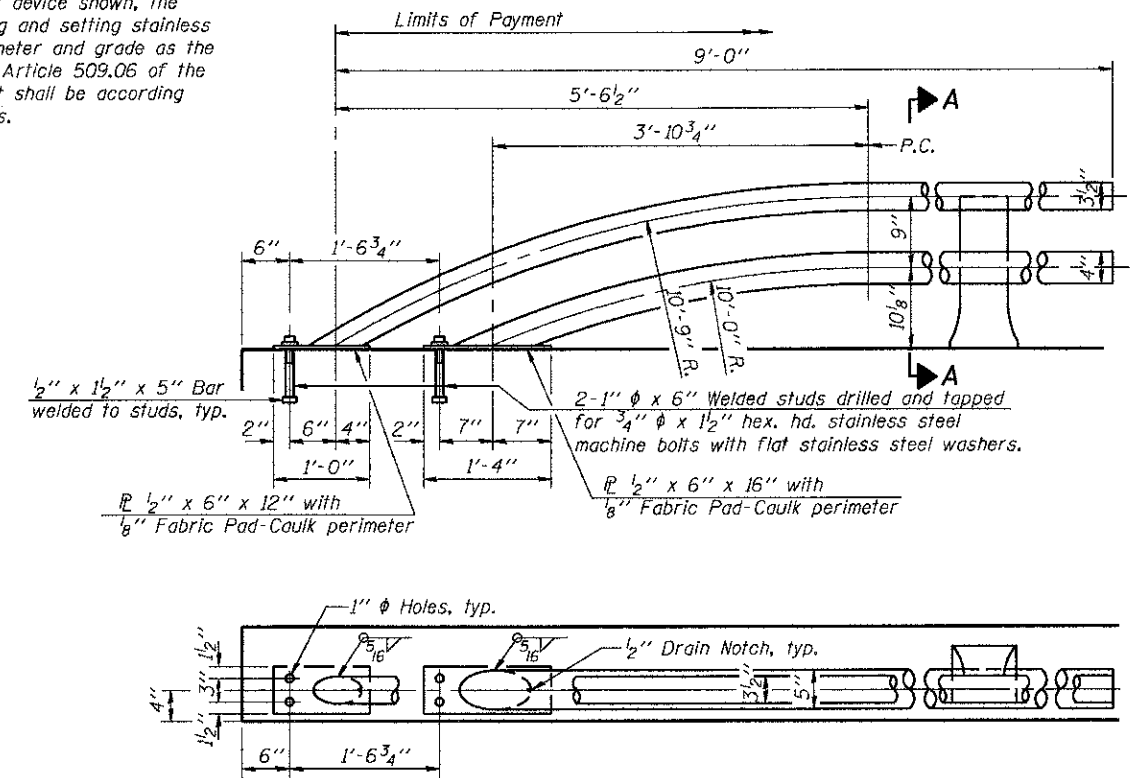


VIEW B-B

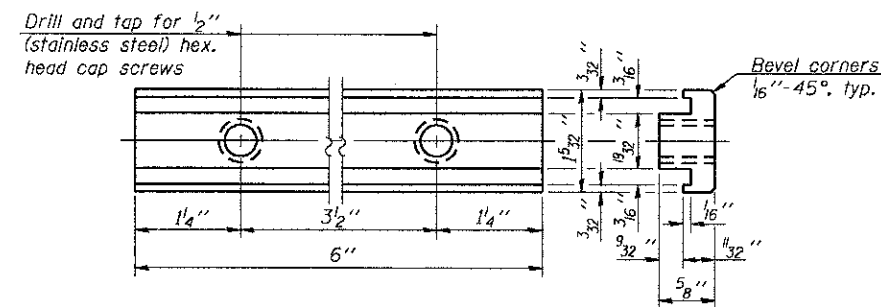
RAIL POST DETAILS

SECTION A-A

* In lieu of the cast-in-place anchor device shown, the Contractor has the option of drilling and setting stainless steel anchor rods of the same diameter and grade as the specified cap screws according to Article 509.06 of the Standard Specifications. Embedment shall be according to the manufacturer's specifications.

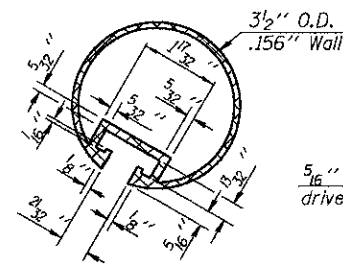


RAIL TERMINAL SECTION

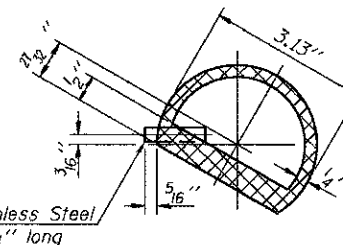


RAIL POST CLAMP BAR

For Top Rail

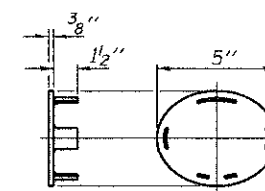


SECTION THRU TOP RAIL



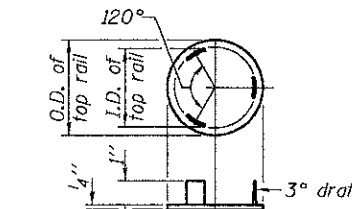
SECTION THRU SPLICE

For Top Rail



CAST END CAP

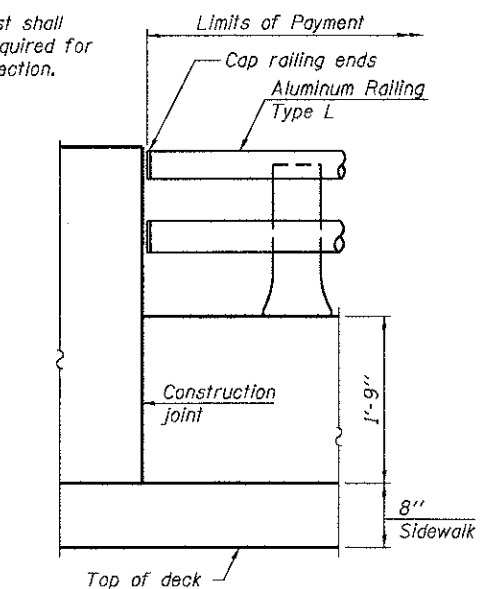
For bottom rail
DRIVE FIT TYPE



CAST END CAP

For top rail

Notes:
All Posts shall be normal to parapet.
All joints in rail shall be spliced per detail.
All exposed rail ends shall be capped per detail.
Provide 1-1/8" and 2-1/16" Aluminum Shims for 25% of the Posts. Rail elements shall be parallel to Grade-high spots will be ground and low spots shimmed.
See sheet 4 of 18 for rail post spacing of bridge.
See sheet 10 of 18 for rail post spacing of approaches.



RAIL END TREATMENT FOR TYPE 5 AND 6 TERMINAL

BILL OF MATERIAL

Item	Unit	Quantity
Aluminum Railing, Type L	Foot	346

R-20

1-27-12 (7'-0" to 10'-0" Post spacing)



USER NAME	DESIGNED -	REVISOR
	RJP	
CHECKED -	REVISOR	
MJT		
DRAWN -	REVISOR	
JTF		
CHECKED -	REVISOR	
MJT		

STATE OF ILLINOIS
DEPARTMENT OF TRANSPORTATION

ALUMINUM RAILING, TYPE L
STRUCTURE NO. 022-3041

SHEET NO. 11 OF 18 SHEETS

F.A.P. RTE.	SECTION	COUNTY	TOTAL SHEETS	SHEET NO.
	08-00120-00-BR	DUPAGE	38	27
				CONTRACT NO. 63785
ILLINOIS FED. AID PROJECT				