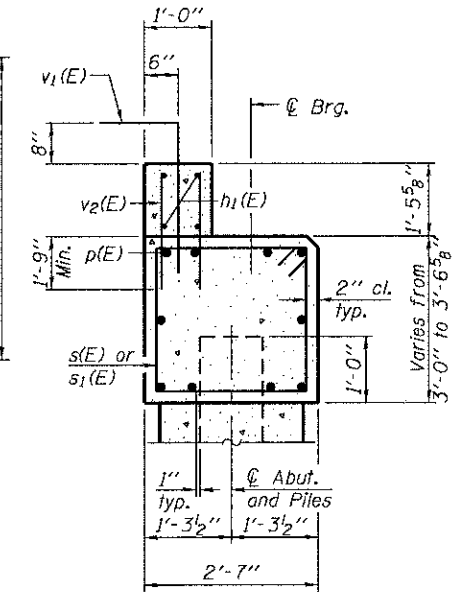
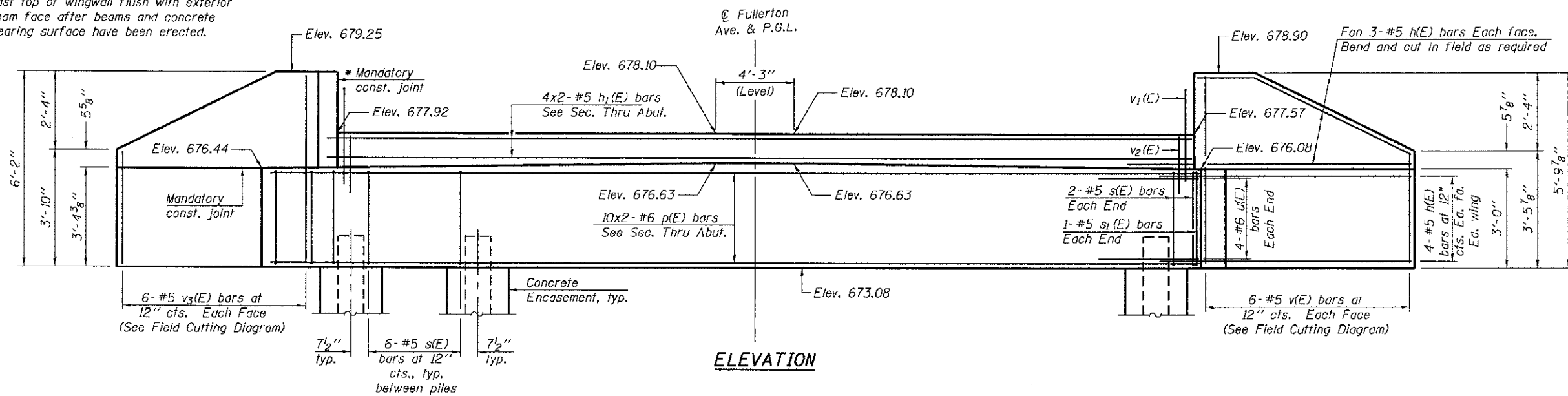
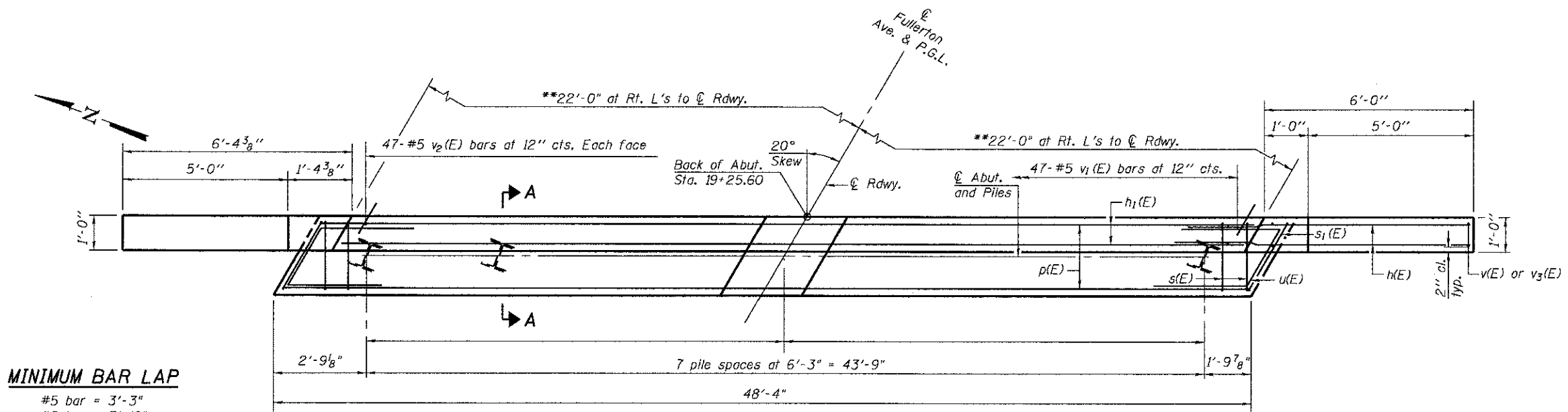


* Cast top of wingwall flush with exterior beam face after beams and concrete wearing surface have been erected.

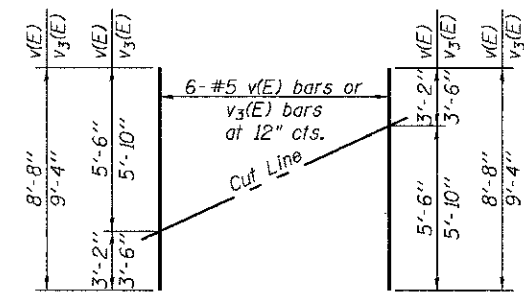


SECTION A-A
(Dimensions are at Rt. L's)

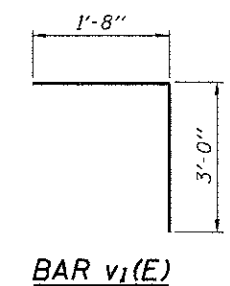
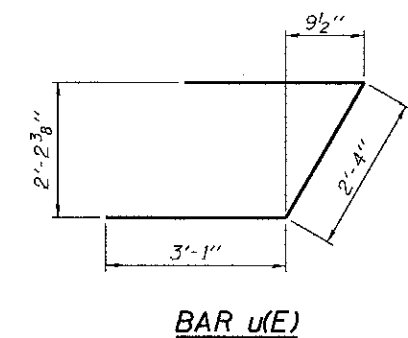
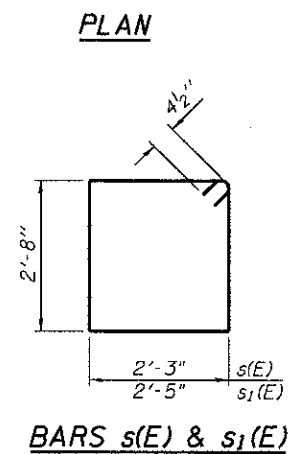


MINIMUM BAR LAP
#5 bar = 3'-3"
#6 bar = 3'-10"

PILE DATA
Type: HP 14x73
Nominal Required Bearing: 345 k
Factored Resistance Available: 190 k
Est. Length: 55 ft
No. Production Piles: 7
No. Test Piles: 1



FIELD CUTTING DIAGRAM
Order v(E) & v3(E) full length. Cut as shown and use remainder of bars in opposite face.



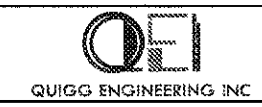
BILL OF MATERIAL

| Bar | No. | Size | Length | Shape |
|----------------------------------|---------|------|---------|-------|
| h(E) | 28 | #5 | 8'-3" | — |
| h1(E) | 8 | #5 | 24'-11" | — |
| p(E) | 20 | #6 | 25'-11" | — |
| s(E) | 46 | #5 | 10'-7" | □ |
| s1(E) | 2 | #5 | 10'-11" | □ |
| u(E) | 8 | #6 | 8'-6" | └ |
| v(E) | 6 | #5 | 8'-8" | — |
| v1(E) | 47 | #5 | 4'-8" | └ |
| v2(E) | 94 | #5 | 3'-2" | — |
| v3(E) | 6 | #5 | 9'-4" | — |
| Structure Excavation | Cu. Yd. | 52.2 | | |
| Concrete Structures | Cu. Yd. | 19.8 | | |
| Reinforcement Bars, Epoxy Coated | Pound | 2510 | | |
| Furnishing Steel Piles, HP14x73 | Foot | 385 | | |
| Driving Piles | Foot | 385 | | |
| Test Pile Steel HP14x73 | Each | 1 | | |
| Concrete Encasement | Cu. Yd. | 4.4 | | |

Notes:
For details of piles and Concrete Encasement, see sheet 16 of 18.
Cast backwall after beams and concrete wearing surface have been erected.

AD-2742-R

7-1-10



| USER NAME | DESIGNED - RJP | REVISED |
|---------------|----------------|---------|
| CHECKED - MJT | REVISED | |
| DRAWN - JTF | REVISED | |
| CHECKED - MJT | REVISED | |

STATE OF ILLINOIS
DEPARTMENT OF TRANSPORTATION

EAST ABUTMENT
STRUCTURE NO. 022-3041

SHEET NO. 13 OF 18 SHEETS

| F.A.P. RTE. | SECTION | COUNTY | TOTAL SHEETS | SHEET NO. |
|--------------------|----------------|--------|--------------|-----------|
| | 08-01120-00-BR | DUPAGE | 38 | 29 |
| CONTRACT NO. 63785 | | | | |

ILLINOIS FED. AID PROJECT