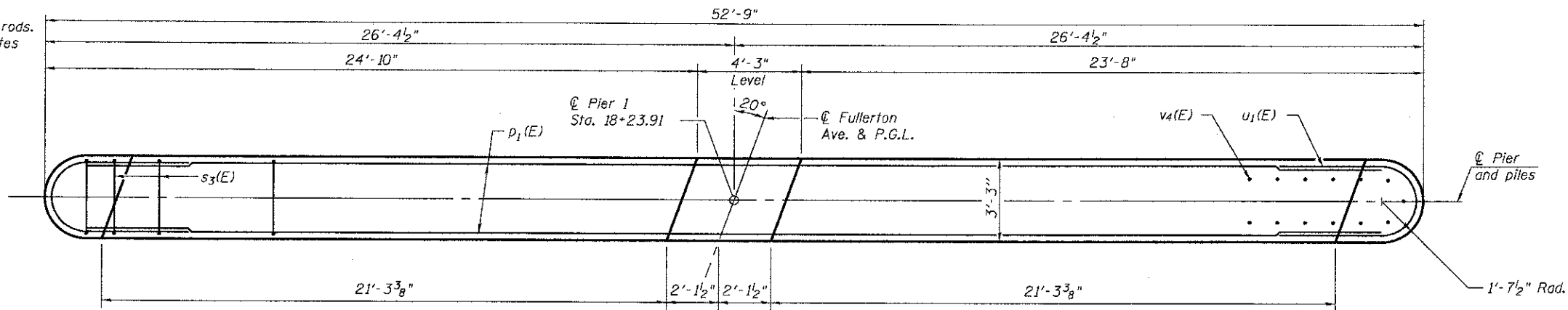
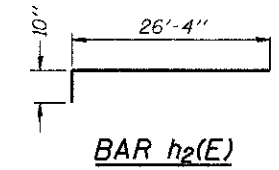


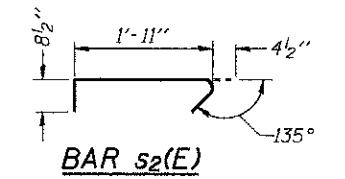
Notes:  
 Space reinforcement in cap to miss dowel rods.  
 Bars indicated thus 12 x 2-#5 etc. indicates  
 12 lines of bars with 2 lengths per line.



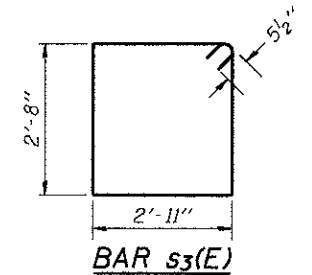
TOP PLAN



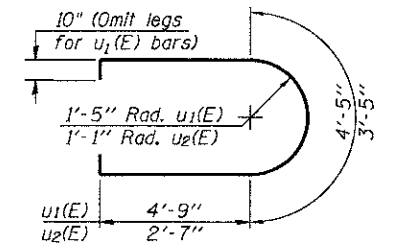
BAR h<sub>2</sub>(E)



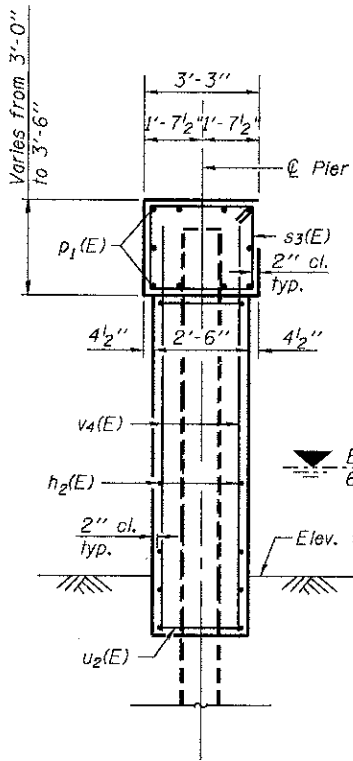
BAR s<sub>2</sub>(E)



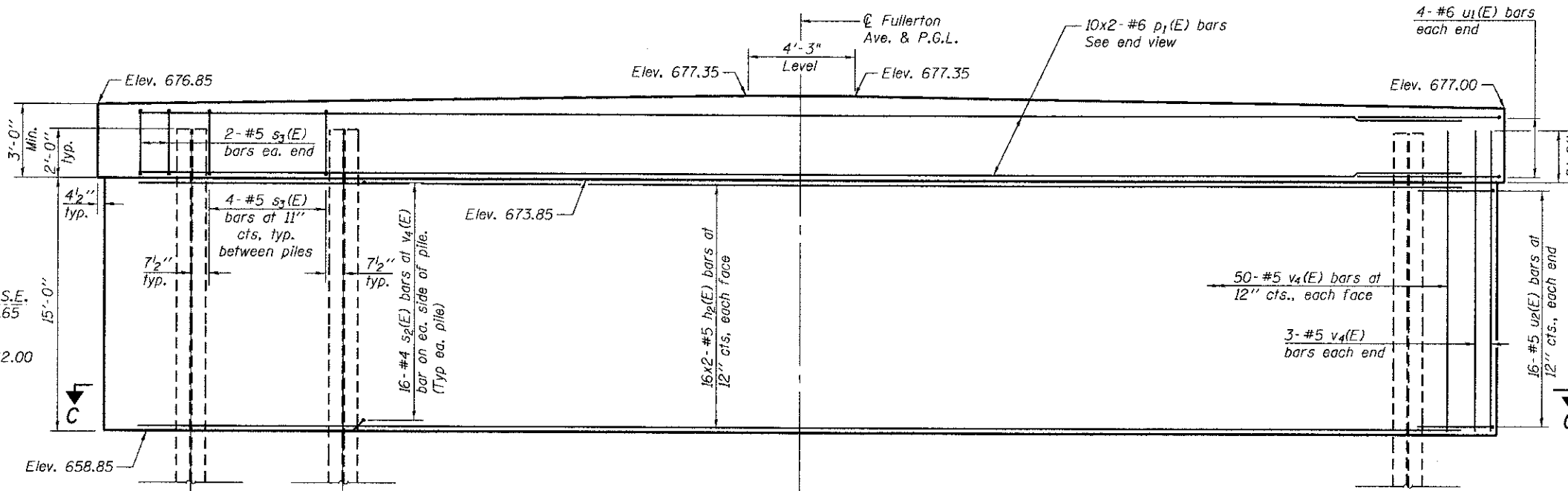
BAR s<sub>3</sub>(E)



BARS u<sub>1</sub>(E) & u<sub>2</sub>(E)



END VIEW



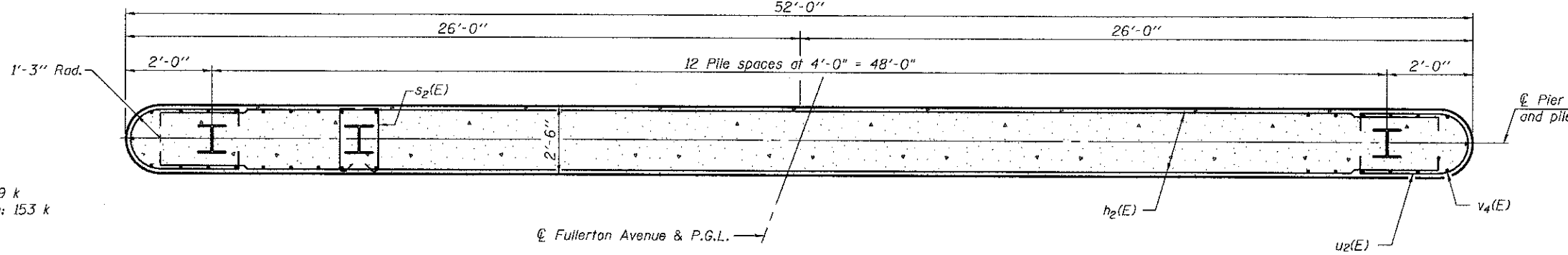
ELEVATION  
(Looking East)

MINIMUM BAR LAP

#5 bar = 3'-3"  
 #6 bar = 3'-10"

PILE DATA

Type: HP 14x73  
 Nominal Required Bearing: 279 k  
 Allowable Resistance Available: 153 k  
 Est. Length: 58 ft  
 No. Production Piles: 12  
 No. Test Piles: 1



SECTION C-C

BILL OF MATERIAL

Bar	No.	Size	Length	Shape
h <sub>2</sub> (E)	64	#5	27'-2"	□
p <sub>1</sub> (E)	20	#6	26'-8"	—
s <sub>2</sub> (E)	416	#4	3'-0"	┌
s <sub>3</sub> (E)	52	#5	12'-1"	□
u <sub>1</sub> (E)	8	#6	13'-11"	U
u <sub>2</sub> (E)	32	#5	10'-3"	U
v <sub>4</sub> (E)	106	#5	17'-0"	—
Cofferdam Excavation		Cu. Yd.	73.5	
Cofferdam (Type 1) (Location-1)		Each	1	
Concrete Structures		Cu. Yd.	91.8	
Reinforcement Bars, Epoxy Coated		Pound	6490	
Furnishing Steel Piles HP14x73		Foot	696	
Driving Piles		Foot	696	
Test Pile Steel HP14x73		Each	1	



USER NAME =	DESIGNED RJP	REVISED -
PLLOT SCALE =	CHECKED MJT	REVISED -
PLLOT DATE =	DRAWN KC	REVISED -
	CHECKED MJT	REVISED -

STATE OF ILLINOIS  
 DEPARTMENT OF TRANSPORTATION

PIER 1  
 STRUCTURE NO. 022-3041

SHEET NO. 14 OF 18 SHEETS

F.A.I. RTE.	SECTION	COUNTY	TOTAL SHEETS	SHEET NO.
	08-01120-00-BR		38	30
CONTRACT NO. 63785				
ILLINOIS FED. AID PROJECT				