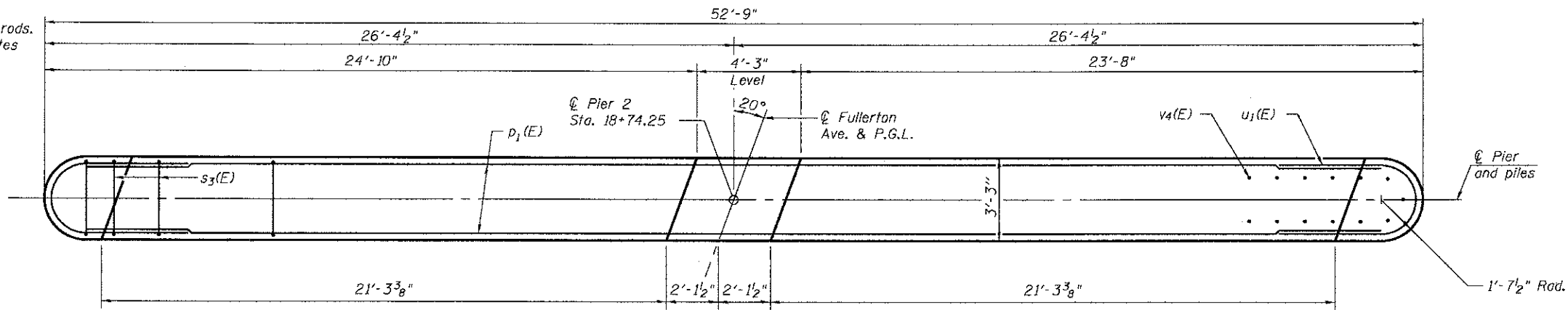
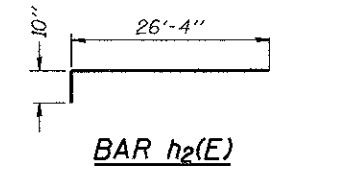


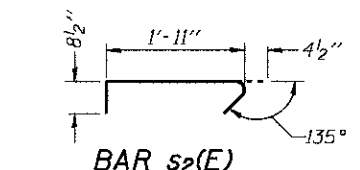
Notes:
 Space reinforcement in cap to miss dowel rods.
 Bars indicated thus 12 x 2-#5 etc. indicates
 12 lines of bars with 2 lengths per line.



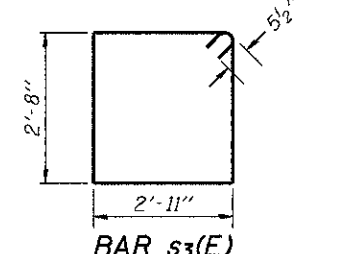
TOP PLAN



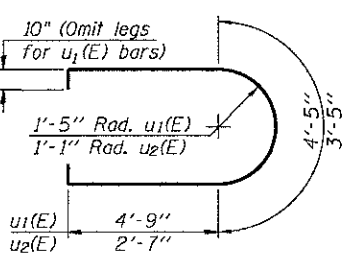
BAR h2(E)



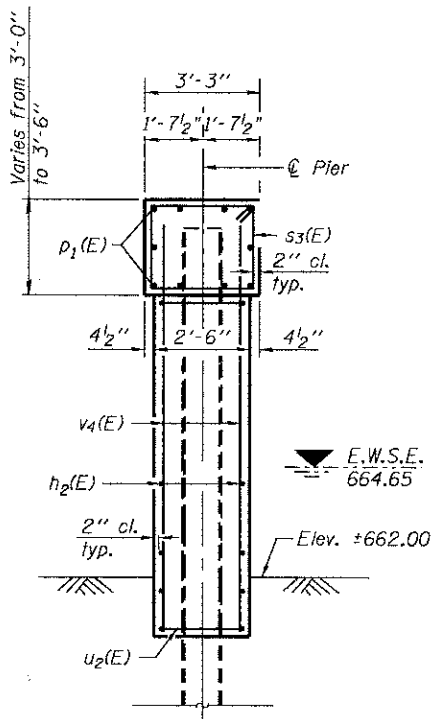
BAR s2(E)



BAR s3(E)



BARS u1(E) & u2(E)

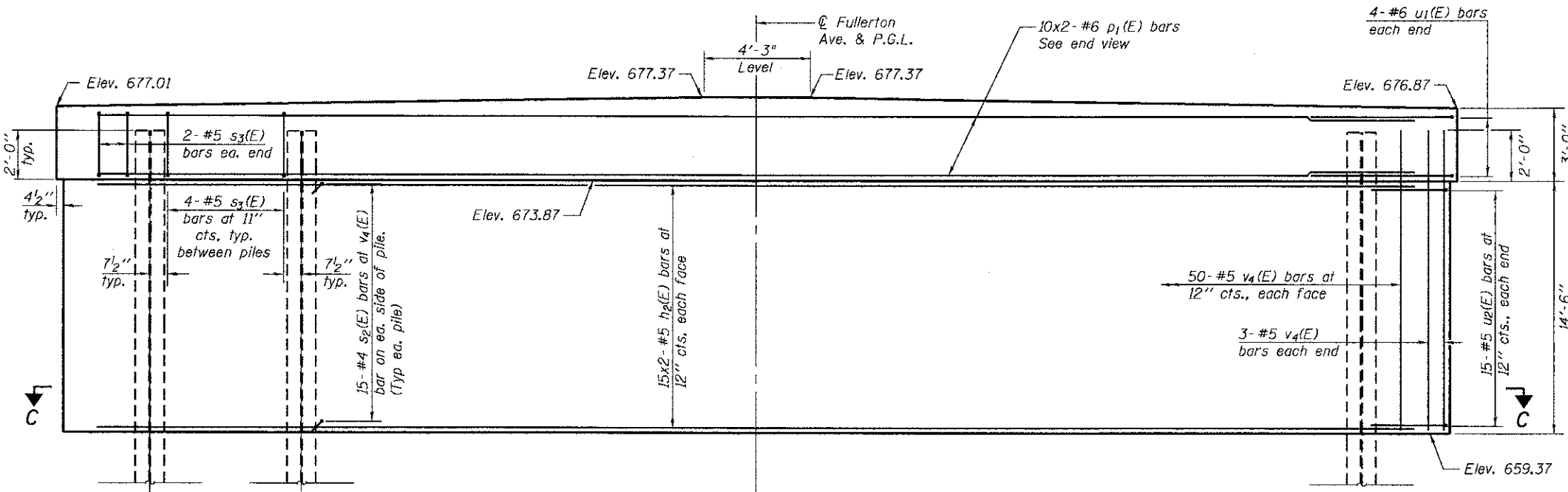


END VIEW

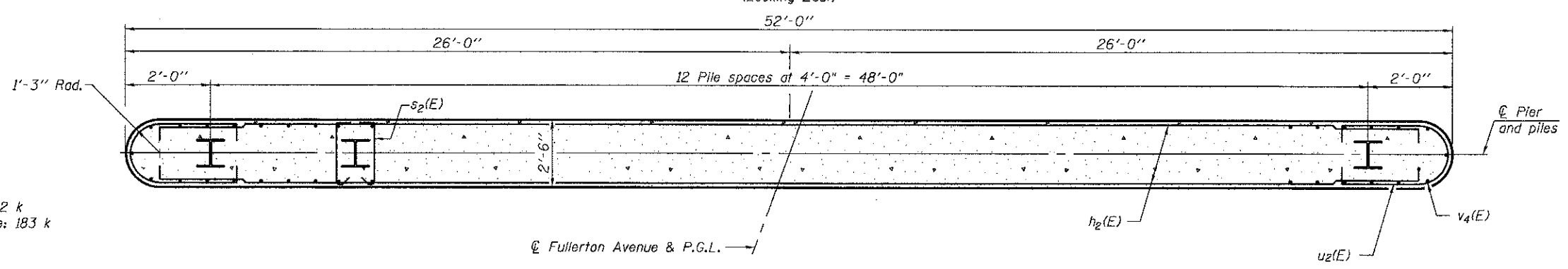
MINIMUM BAR LAP
 #5 bar = 3'-3"
 #6 bar = 3'-10"

PILE DATA

Type: HP 14x73
 Nominal Required Bearing: 332 k
 Allowable Resistance Available: 183 k
 Est. Length: 56 ft
 No. Production Piles: 12
 No. Test Piles: 1



ELEVATION
 (Looking East)



SECTION C-C

BILL OF MATERIAL

Bar	No.	Size	Length	Shape
h2(E)	60	#5	27'-2"	□
p1(E)	20	#6	26'-8"	—
s2(E)	390	#4	3'-0"	U
s3(E)	52	#5	12'-1"	□
u1(E)	8	#6	13'-11"	U
u2(E)	30	#5	10'-3"	U
v4(E)	106	#5	16'-6"	—
Cofferdam Excavation		Cu. Yd.	61.4	
Cofferdam (Type 1) (Location-2)		Each	1	
Concrete Structures		Cu. Yd.	89.4	
Reinforcement Bars, Epoxy Coated		Pound	6250	
Furnishing Steel Piles HP14x73		Foot	672	
Driving Piles		Foot	672	
Test Pile Steel HP14x73		Each	1	



USER NAME	DESIGNED RJP	REVISED -
PLOT SCALE	CHECKED MJT	REVISED -
PLOT DATE	DRAWN KC	REVISED -
	CHECKED MJT	REVISED -

STATE OF ILLINOIS
 DEPARTMENT OF TRANSPORTATION

PIER 2
 STRUCTURE NO. 022-3041

SHEET NO. 15 OF 18 SHEETS

F.A.I. RTE.	SECTION	COUNTY	TOTAL SHEETS	SHEET NO.
	08-01120-00-BR	DUPAGE	38	31
			CONTRACT NO. 63785	
ILLINOIS FED. AID PROJECT				