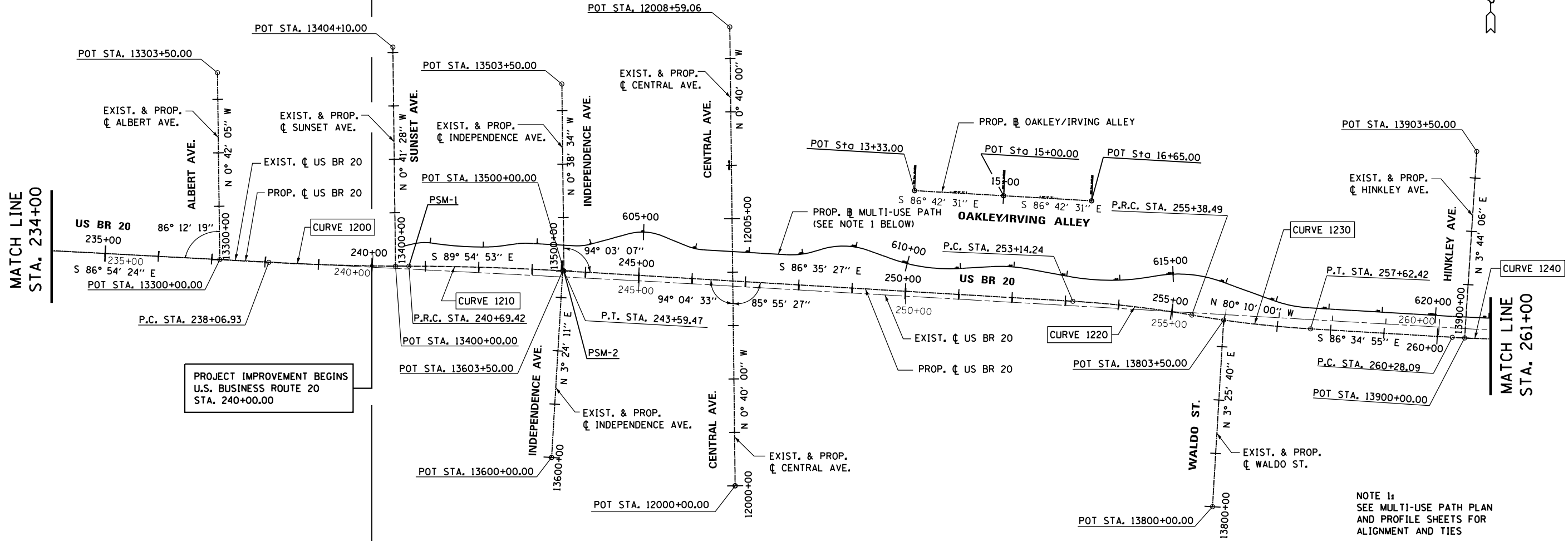


FOR INFORMATION ONLY



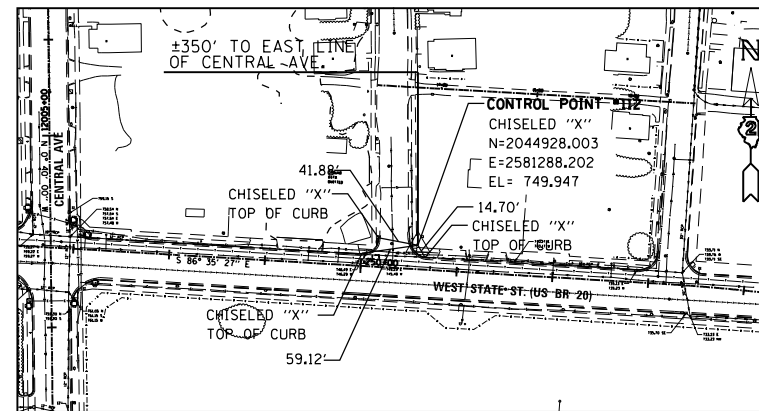
PROJECT IMPROVEMENT BEGINS  
U.S. BUSINESS ROUTE 20  
STA. 240+00.00

NOTE 1:  
SEE MULTI-USE PATH PLAN  
AND PROFILE SHEETS FOR  
ALIGNMENT AND TIES

TIE POINT LOCATION STA	DESCRIPTION	PSM TYPE II	MONUMENT RECORD TO BE RECORDED
		EACH	
US BR 20 240+69.42	PC	1	YES
US BR 20 243+59.47	PT	1	YES
US BR 20 275+04.39	PC	1	YES
US BR 20 27750.72	PT	1	YES

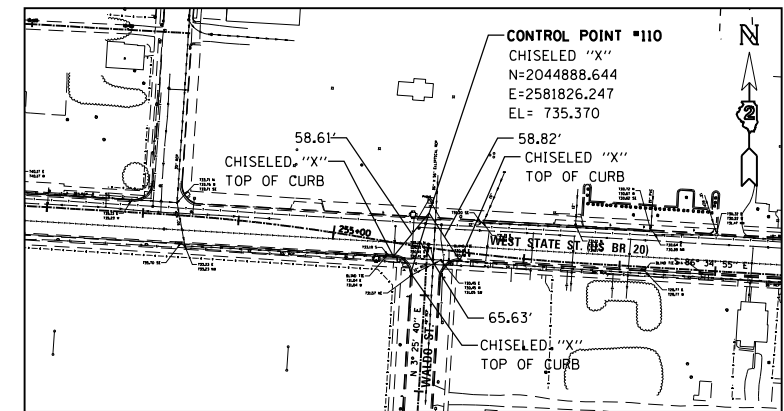
NOTE:  
PROFESSIONAL LAND SURVEYOR SHALL RECORD NEW MONUMENT RECORD AND PROVIDE COPY TO DISTRICT 2 PLATS & PLANS.

PMS = PERMANENT SURVEY MARKER



LOCATION DESCRIPTION: STA. 250+58.35, 25.00' NORTH OF BR US 20 PROP. CL

CONTROL POINT #112  
SCALE: 1" = 100'



LOCATION DESCRIPTION: STA. 255+95.52, 35.96' NORTH OF BR US 20 PROP. CL

CONTROL POINT #110  
SCALE: 1" = 100'

McDonough Associates Inc.  
Engineers / Architects  
130 East Randolph Street, Chicago, Illinois 60601

FILE NAME =	USER NAME = dossed	DESIGNED - BA	REVISED -
et:\pwork\pwork\dot\dossed\dms67949\0264750-sh-t-HVC-lpgs37-471.dgn		DRAWN - BA	REVISED -
	PLOT SCALE = 200.0000' / in.	CHECKED - RCH	REVISED -
	PLOT DATE = Mon Dec 17 13:19:08 2012	DATE - \$SUBDATE\$	REVISED -

STATE OF ILLINOIS  
DEPARTMENT OF TRANSPORTATION

ALIGNMENT, TIES, AND BENCHMARKS

SCALE: SHEET NO. 2 OF 11 SHEETS STA. TO STA.

F.A.P. RTE.	SECTION	COUNTY	TOTAL SHEETS	SHEET NO.
303	41R	WINNEBAGO	327	38
CONTRACT NO. 64750				
FED. ROAD DIST. NO. 2 ILLINOIS FED. AID PROJECT				