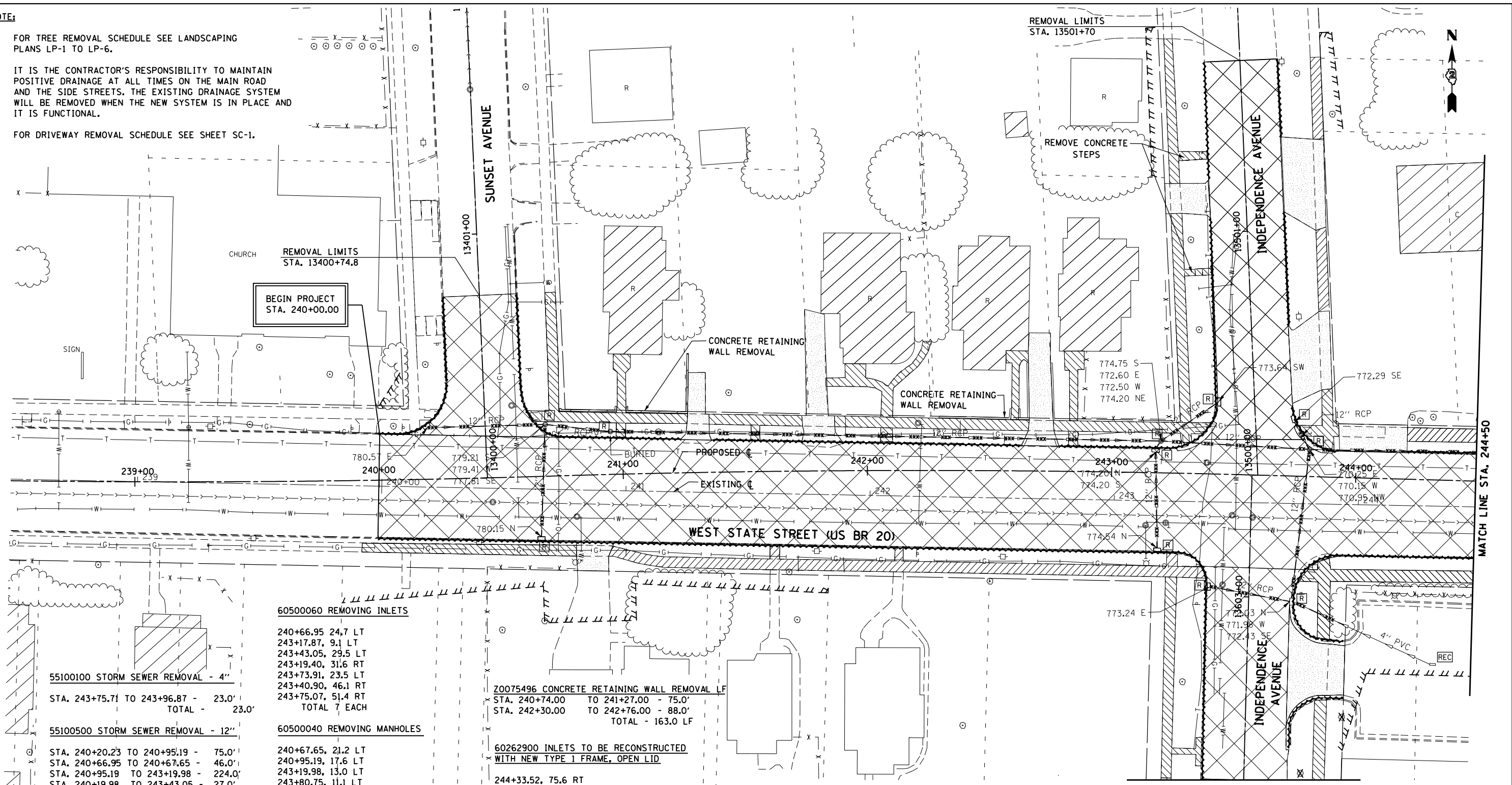


NOTE:

- FOR TREE REMOVAL SCHEDULE SEE LANDSCAPING PLANS LP-1 TO LP-6.
- IT IS THE CONTRACTOR'S RESPONSIBILITY TO MAINTAIN POSITIVE DRAINAGE AT ALL TIMES ON THE MAIN ROAD AND THE SIDE STREETS. THE EXISTING DRAINAGE SYSTEM WILL BE REMOVED WHEN THE NEW SYSTEM IS IN PLACE AND IT IS FUNCTIONAL.
- FOR DRIVEWAY REMOVAL SCHEDULE SEE SHEET SC-1.



55100100 STORM SEWER REMOVAL - 4"

STA. 243+75.71 TO 243+96.87 - 23.0'
TOTAL - 23.0'

55100500 STORM SEWER REMOVAL - 12"

STA. 240+20.23 TO 240+95.19 - 75.0'
STA. 240+66.95 TO 240+67.65 - 46.0'
STA. 240+95.19 TO 243+19.98 - 224.0'
STA. 240+19.98 TO 243+43.05 - 27.0'
STA. 243+19.40 TO 243+19.98 - 40.0'
STA. 243+19.98 TO 243+80.75 - 59.0'
STA. 243+73.91 TO 243+80.75 - 12.0'
STA. 243+40.90 TO 243+75.07 - 33.0'
STA. 243+75.07 TO 243+80.75 - 61.0'
STA. 243+75.07 TO 244+49.12 - 68.0'
TOTAL - 645.0'

44000500 COMBINATION CURB AND GUTTER REMOVAL LF

STA. 240+00.00 TO 241+27.43, LT - 75.8'
STA. 240+57.77 TO 241+24.00, LT - 116.3'
STA. 241+36.78 TO 242+63.00, LT - 126.5'
STA. 242+78.22 TO 243+43.91, LT - 198.9'
STA. 243+67.75 TO 243+93.09, LT - 108.2'
STA. 244+20.74 TO 244+50.00, LT - 40.0'
TOTAL - 665.7'

60500060 REMOVING INLETS

240+66.95 24.7 LT
243+17.87, 9.1 LT
243+43.05, 29.5 LT
243+19.40, 31.6 RT
243+73.91, 23.5 LT
243+40.90, 46.1 RT
243+75.07, 51.4 RT
TOTAL 7 EACH

60500040 REMOVING MANHOLES

240+67.65, 21.2 LT
240+95.19, 17.6 LT
243+19.98, 13.0 LT
243+80.75, 11.1 LT
TOTAL 4 EACH

44000600 SIDEWALK REMOVAL

STA. 240+61.64 TO 241+26.50, LT - 495.9
STA. 240+95.00 TO 241+00.00, LT - 108.0
STA. 241+35.58 TO 241+73.64, LT - 184.6
STA. 241+83.00 TO 242+25.69, LT - 259.4
STA. 241+86.66 TO 242+66.29, LT - 376.1
STA. 242+58.25 TO 242+63.25, LT - 113.5
STA. 242+75.85 TO 243+40.09, LT - 952.8
STA. 242+82.59 TO 242+87.59, LT - 133.0
STA. 243+76.11 TO 243+92.73, LT - 438.9
STA. 244+20.72 TO 244+50.00, LT - 219.8
STA. 240+38.23 TO 240+80.05, RT - 355.9
STA. 240+93.17 TO 243+39.19, RT - 1,540.3
STA. 243+78.15 TO 244+50.00, RT - 640.3
TOTAL - 5,818.5

70075496 CONCRETE RETAINING WALL REMOVAL LF

STA. 240+74.00 TO 241+27.00 - 75.0'
STA. 242+30.00 TO 242+76.00 - 88.0'
TOTAL - 163.0 LF

60262900 INLETS TO BE RECONSTRUCTED WITH NEW TYPE 1 FRAME, OPEN LID

244+33.52, 75.6 RT
TOTAL 1 EACH

44000100 PAVEMENT REMOVAL SY

STA. 240+00 TO 244+50 - 2172.0 SQ FT
STA. 13400+17 TO 13400+75 - 210.7 SQ FT
STA. 13602+25 TO 13603+12 - 333.2 SQ FT
STA. 13500+14 TO 13501+70 - 522.4 SQ FT
TOTAL - 3238.3 SQ FT

44000500 COMBINATION CURB AND GUTTER REMOVAL LF

STA. 240+00.00 TO 243+39.66, RT - 426.8'
STA. 243+75.70 TO 244+50.00, RT - 152.7'
TOTAL - 579.5'

LEGEND

--- ---	TEMPORARY CONSTRUCTION EASEMENT	[Hatched Box]	PAVEMENT REMOVAL	[Hatched Box]	CONCRETE REMOVAL
---	EXISTING R.O.W.	[Hatched Box]	SIDEWALK REMOVAL	[Hatched Box]	BITUMINOUS REMOVAL
- - - -	PROPOSED R.O.W.	[Hatched Box]	DRIVEWAY PAVEMENT REMOVAL	[Hatched Box]	BARRIER CURB REMOVAL
- xxx - xxx -	STORM SEWER REMOVAL	[Wavy Line]	COMBINATION CONCRETE CURB AND GUTTER REMOVAL	[Hatched Box]	
[A]	STRUCTURE TO BE ADJUSTED	[Hatched Box]	BUILDING TO BE REMOVED (BY OTHERS)		
[R]	STRUCTURE TO BE REMOVED				
[REC]	STRUCTURE TO BE RECONSTRUCTED				

McDonough Associates Inc.
Engineers / Architects
130 East Randolph Street, Chicago, Illinois 60601

FILE NAME =	USER NAME = dossed	DESIGNED - JWM	REVISED -
et:\pw\work\p1dot\dossed\0317613\026478	0-shr-rem@48.dgn	DRAWN - JPW	REVISED -
	PLOT SCALE = 40.0000' / in.	CHECKED - RCH	REVISED -
	PLOT DATE = Mon Dec 17 13:25:35 2012	DATE - \$SUBDATE\$	REVISED -

**STATE OF ILLINOIS
DEPARTMENT OF TRANSPORTATION**

**EXISTING REMOVAL PLAN
WEST STATE STREET (US BUS 20)**

SCALE: SHEET NO. 1 OF 18 SHEETS STA. 240+00 TO STA. 244+50

F.A.P. R.T.E.	SECTION	COUNTY	TOTAL SHEETS	SHEET NO.
303	41R	WINNEBAGO	327	48
CONTRACT NO. 64750			FED. ROAD DIST. NO. 2 ILLINOIS FED. AID PROJECT	