

55100500 STORM SEWER REMOVAL - 12"

STA. 244+49.12 TO 246+35.40 - 186.0'  
 STA. 246+34.56 TO 246+35.40 - 43.0'  
 STA. 246+35.40 TO 246+57.21 - 19.0'  
 STA. 246+54.14 TO 246+57.21 - 31.0'  
 STA. 246+57.21 TO 246+95.98 - 37.0'  
 STA. 246+93.16 TO 246+95.98 - 23.0'  
 STA. 246+57.20 TO 246+97.90 - 39.0'  
 STA. 246+97.90 TO 246+95.98 - 56.0'  
 STA. 246+90 TO 247+03.45 - 86.0'  
 STA. 246+95.98 TO 250+04.03 - 308.0'  
 STA. 250+04.03 TO 250+17.96 - 12.0'  
 TOTAL - 840.0'

55100700 STORM SEWER REMOVAL - 15"

STA. 245+81.82 TO 246+57.20 - 74.0'  
 TOTAL - 74.0'

55100900 STORM SEWER REMOVAL - 18"

STA. 250+17.96 TO 250+49.21 - 30.0'  
 TOTAL - 30.0'

60500060 REMOVING INLETS

246+36.80, 14.0 LT  
 246+34.56, 29.6 RT  
 246+54.14, 45.1 LT  
 246+93.16, 38.0 LT  
 246+57.05, 44.6 RT  
 247+01.32, 64.6 RT  
 250+04.03, 12.5 LT  
 TOTAL - 7 EACH

60500040 REMOVING MANHOLES

246+57.21, 12.5 LT  
 246+95.98, 12.5 LT  
 245+81.82, 44.9 RT  
 246+97.90, 45.6 RT  
 250+17.96, 12.5 LT  
 TOTAL - 5 EACH

44000100 PAVEMENT REMOVAL SY

STA. 244+50 TO 250+50 - 3086.4 SQ YD  
 STA. 12004+21 TO 12005+00 - 326.0 SQ YD  
 STA. 12002+50 TO 12003+50 - 318.1 SQ YD  
 STA. 250+32 - 287.0 SQ YD  
 TOTAL - 4,017.5 SQ YD

44000500 COMBINATION CURB AND GUTTER REMOVAL

STA. 244+49.19 TO 244+96.72 RT - 74.6'  
 STA. 245+20.55 TO 246+66.31, RT - 400.9'  
 STA. 247+05.89 TO 250+49.21, RT - 437.0'  
 TOTAL - 912.5'

44000500 COMBINATION CURB AND GUTTER REMOVAL

STA. 244+93.20 TO 245+29.65, LT - 40.0  
 STA. 244+91.03 TO 245+30.52, LT - 42.3  
 STA. 245+37.75 TO 245+45.83, LT - 11.2  
 STA. 245+80.93 TO 245+98.00, LT - 25.1  
 STA. 246+19.10 TO 246+48.21, LT - 125.2  
 STA. 246+88.15 TO 250+17.32, LT - 433.3  
 STA. 250+14.16 TO 250+12.66, LT - 27.3  
 STA. 250+49.21 TO 250+49.21, LT - 14.1  
 TOTAL - 718.5

44000600 SIDEWALK REMOVAL SF

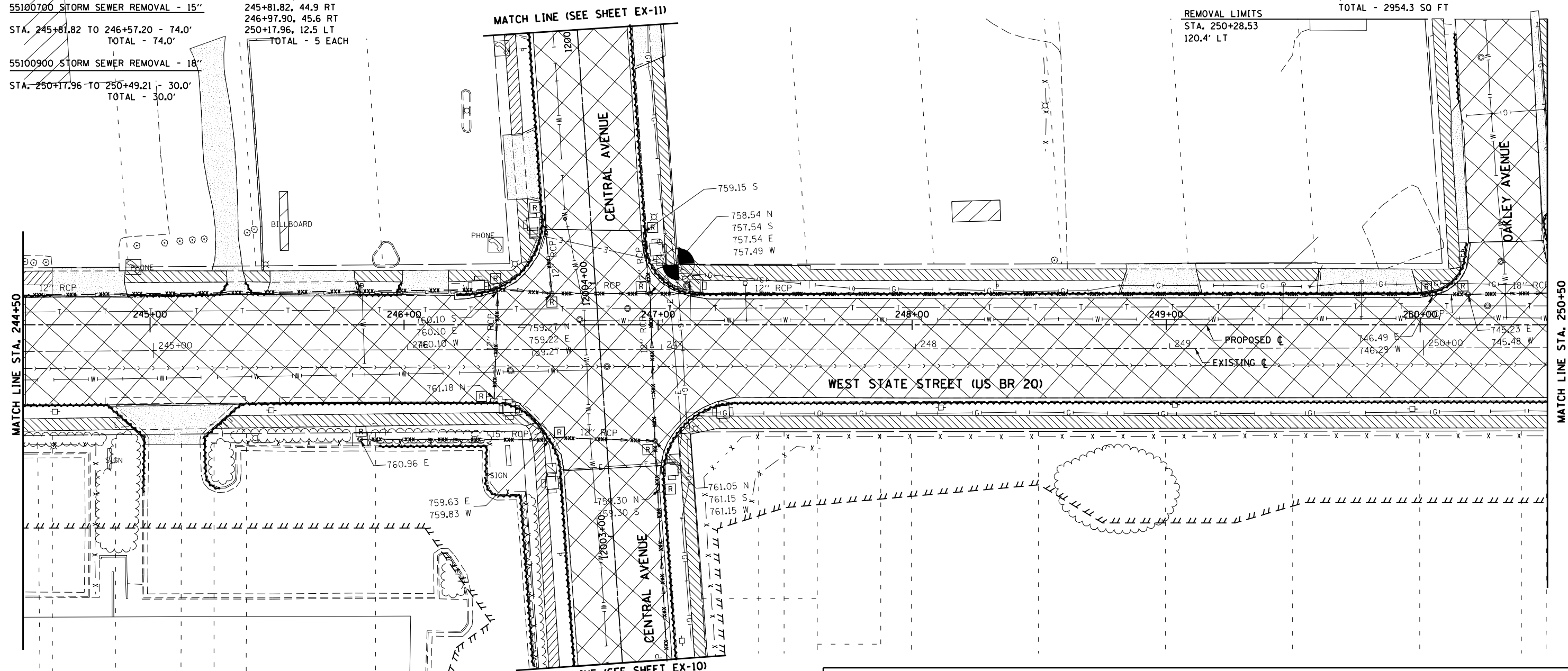
STA. 244+49.12 TO 244+89.96, RT - 199.1 SQ FT  
 STA. 245+27.35 TO 246+48.47, RT - 577.9 SQ FT  
 STA. 246+49.15 TO 246+58.25, RT - 407.6 SQ FT  
 STA. 247+16.00 TO 247+09.21, RT - 442.1 SQ FT  
 STA. 247+11.43 TO 250+49.21, RT - 1,690.8 SQ FT  
 TOTAL - 3317.5 SQ FT

44000600 SIDEWALK REMOVAL SF

STA. 244+49.12 TO 244+60.59, LT - 62.1 SQ FT  
 STA. 244+88.94 TO 245+29.35, LT - 183.1 SQ FT  
 STA. 245+36.12 TO 245+46.35, LT - 44.2 SQ FT  
 STA. 245+79.66 TO 245+98.38, LT - 82.1 SQ FT  
 STA. 246+16.61 TO 246+43.40, LT - 137.7 SQ FT  
 STA. 246+47.17 TO 246+45.48, LT - 118.5 SQ FT  
 STA. 246+43.69 TO 246+40.62, LT - 174.2 SQ FT  
 STA. 246+98.69 TO 247+04.44, LT - 334.6 SQ FT  
 STA. 246+99.28 TO 248+82.98, LT - 939.4 SQ FT  
 STA. 249+11.47 TO 249+59.04, LT - 225.0 SQ FT  
 STA. 249+96.62 TO 250+13.49, LT - 124.4 SQ FT  
 STA. 250+12.72 TO 250+06.02, LT - 449.3 SQ FT  
 STA. 250+46.76 TO 250+50.00, LT - 79.7 SQ FT  
 TOTAL - 2954.3 SQ FT

REMOVAL LIMITS

STA. 250+28.53  
 120.4' LT



LEGEND			
---	TEMPORARY CONSTRUCTION EASEMENT	▨	PAVEMENT REMOVAL
---	EXISTING R.O.W.	▨	SIDEWALK REMOVAL
- - -	PROPOSED R.O.W.	▨	DRIVEWAY PAVEMENT REMOVAL
- xxx - xxx -	STORM SEWER REMOVAL	▨	COMBINATION CONCRETE CURB AND GUTTER REMOVAL
[A]	STRUCTURE TO BE ADJUSTED	▨	BUILDING TO BE REMOVED (BY OTHERS)
[R]	STRUCTURE TO BE REMOVED		
[REC]	STRUCTURE TO BE RECONSTRUCTED		
▨	CONCRETE REMOVAL		
▨	BITUMINOUS REMOVAL		
▨	BARRIER CURB REMOVAL		

NOTE:  
 SEE SHEET EX-1 FOR NOTES.

McDonough Associates Inc.  
 Engineers / Architects  
 130 East Randolph Street, Chicago, Illinois 60601

FILE NAME =	USER NAME = dosddd	DESIGNED - JWM	REVISED -
ei:\pw\work\p\dot\d\dosddd\0317613\026478\0-shr-rem049.dgn		DRAWN - JPF	REVISED -
		CHECKED - RCH	REVISED -
		DATE - \$SUBDATE\$	REVISED -

STATE OF ILLINOIS  
 DEPARTMENT OF TRANSPORTATION

EXISTING REMOVAL PLAN	
WEST STATE STREET (US BUS 20)	
SCALE:	SHEET NO. 2 OF 18 SHEETS
STA. 244+50 TO STA. 240+50	

F.A.P. RTE.	SECTION	COUNTY	TOTAL SHEETS	SHEET NO.
303	41R	WINNEBAGO	327	49
CONTRACT NO. 64750				
FED. ROAD DIST. NO. 2 ILLINOIS FED. AID PROJECT				