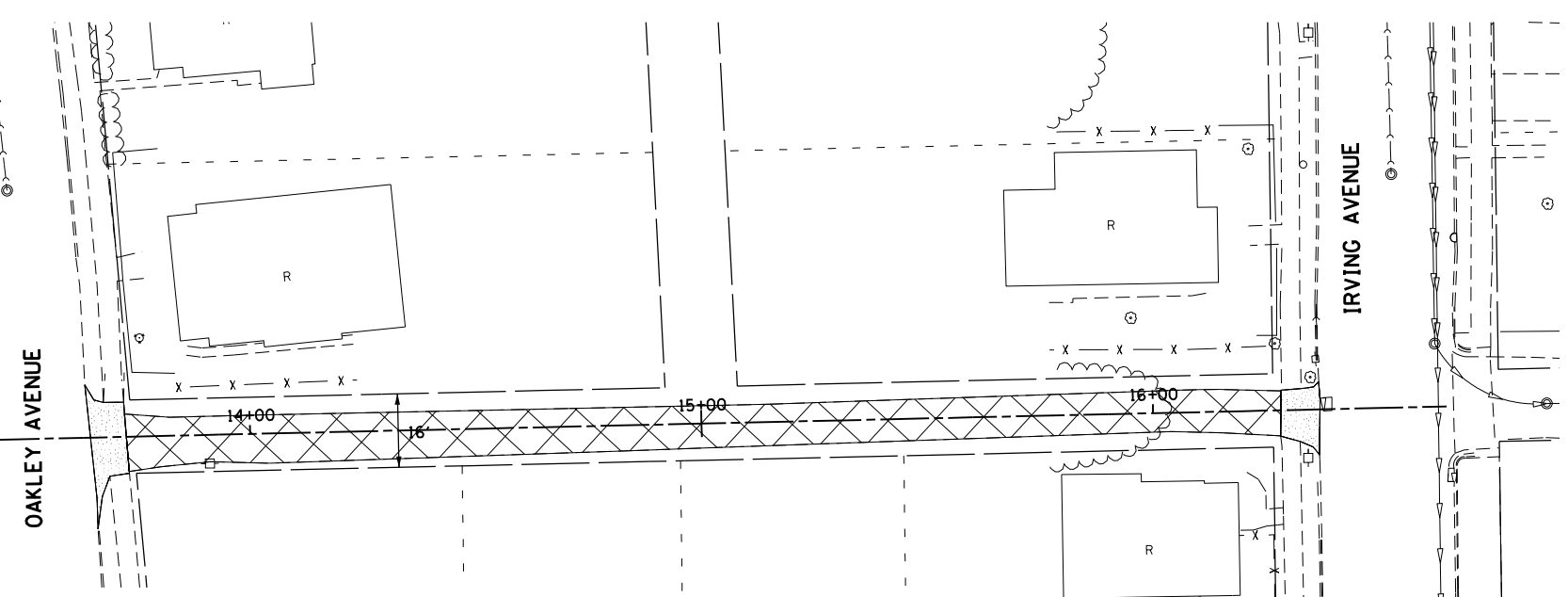
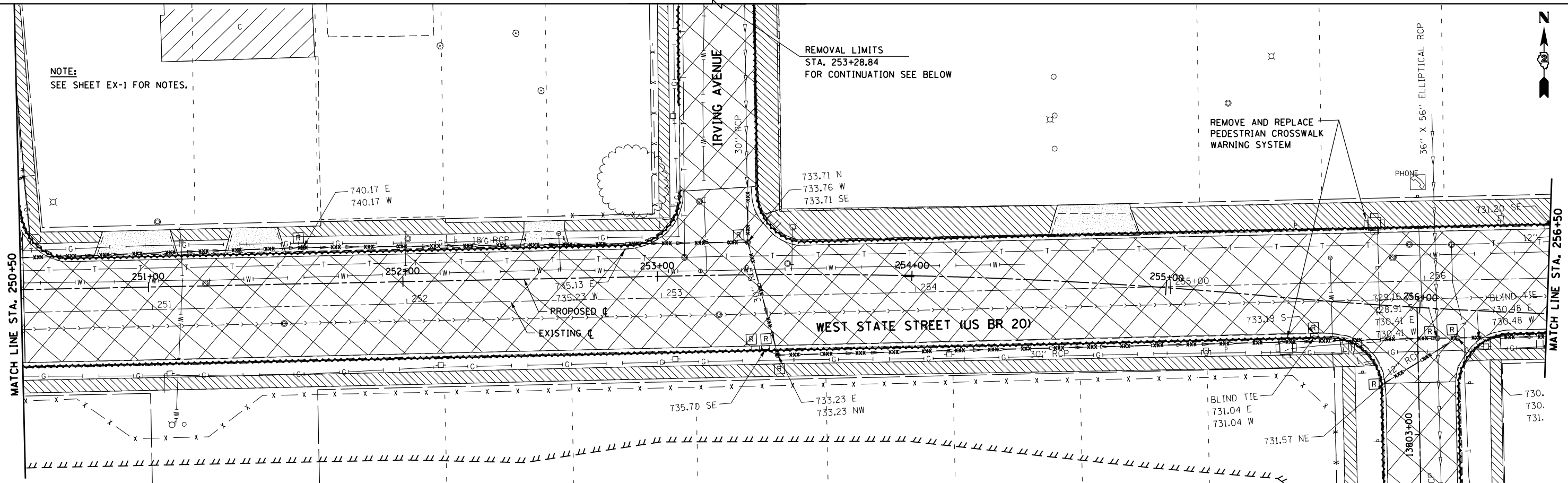




NOTE:
SEE SHEET EX-1 FOR NOTES.

REMOVAL LIMITS
STA. 253+28.84
FOR CONTINUATION SEE BELOW

REMOVE AND REPLACE
PEDESTRIAN CROSSWALK
WARNING SYSTEM



44000600 SIDEWALK REMOVAL SF

STA. 250+49.21 TO 255+81.63, RT	- 2,639.8
STA. 255+72.88 TO 255+93.54, RT	- 1,223.9
STA. 256+44.05 TO 256+41.75, RT	- 183.4
STA. 256+41.28 TO 256+38.23, RT	- 268.9
STA. 256+37.22 TO 256+29.77, RT	- 559.2
STA. 256+20.56 TO 256+49.13, RT	- 144.9
STA. 250+53.39 TO 250+80.84, LT	- 468.7
STA. 251+08.82 TO 251+31.65, LT	- 103.0
STA. 251+50.96 TO 252+47.17, LT	- 483.4
STA. 252+63.04 TO 253+03.67, LT	- 186.0
STA. 253+02.43 TO 253+03.44, LT	- 355.7
STA. 253+02.43 TO 253+03.44, LT	- 120.7
STA. 253+40.22 TO 253+48.90, LT	- 1,418.7
STA. 253+43.26 TO 254+54.18, LT	- 1,295.5
STA. 254+84.10 TO 256+50.00, LT	- 1,632.2
TOTAL	- 11,083.8 SQ FT

60500060 REMOVING INLETS

253+37.28, 28.6 RT
253+41.38, 28.6 RT
255+58.62, 13.6 RT
255+86.73, 30.5 RT
TOTAL - 4 EACH

60500040 REMOVING MANHOLES

251+60.17, 14.4 LT
253+34.79, 12.9 LT
253+46.30, 31.5 RT
256+07.58, 11.5 RT
256+15.45, 11.0 RT
TOTAL - 5 EACH

55100500 STORM SEWER REMOVAL - 12"

STA. 253+37.28 TO 253+41.38	- 1.0'
STA. 253+41.38 TO 253+46.30	- 5.0'
STA. 255+58.62 TO 255+58.82	- 1.0'
STA. 255+86.73 TO 256+14.49	- 33.0'
TOTAL	- 40.0'

44000100 PAVEMENT REMOVAL SY

STA. 250+50 TO 256+50	- 2,790.6 SQ YD
STA. 253+24 (IRVING AVE.)	- 262.5 SQ YD
STA. 13800+78 TO 13803+20	- 729.7 SQ YD
STA. 13+33 TO 16+28 (ALLEY)	- 726.5 SQ YD
TOTAL	- 4,503.3 SQ YD

55100900 STORM SEWER REMOVAL - 18"

STA. 250+49.21 TO 251+60.17	- 111.0'
STA. 251+60.17 TO 253+34.79	- 173.0'
TOTAL	- 284.0'

44000500 COMBINATION CURB AND GUTTER REMOVAL

STA. 250+49.21 TO 256+04.85, RT	- 783.6'
STA. 256+31.52 TO 256+29.13, RT	- 41.0'
STA. 256+28.37 TO 256+49.12, RT	- 230.4'
STA. 253+08.89 TO 253+09.62, LT	- 39.9'
STA. 253+08.89 TO 253+09.62, LT	- 29.1'
STA. 253+38.10 TO 253+38.30, LT	- 53.2'
STA. 253+38.10 TO 256+49.08, LT	- 396.8'
STA. 250+49.21 TO 253+08.72, LT	- 283.9'
TOTAL	- 1,857.9'

55101400 STORM SEWER REMOVAL - 30"

STA. 253+34.73 TO 253+34.79	- 27.0'
STA. 253+34.79 TO 253+46.30	- 44.0'
STA. 253+46.30 TO 256+06.66	- 258.0'
STA. 256+06.66 TO 256+14.49	- 6.0'
STA. 256+14.49 TO 256+49.12	- 34.0'
TOTAL	- 369.0'

REMOVAL LIMITS - STA. 253+28.84
200.61' LT. OF WEST
STATE ST. (US BR 20)
FOR CONTINUATION SEE ABOVE

REMOVAL LIMITS
STA. 13800+80.00

LEGEND

--- TEMPORARY CONSTRUCTION EASEMENT	[Hatched Box] PAVEMENT REMOVAL	[Hatched Box] CONCRETE REMOVAL
--- EXISTING R.O.W.	[Hatched Box] SIDEWALK REMOVAL	[Hatched Box] BITUMINOUS REMOVAL
--- PROPOSED R.O.W.	[Hatched Box] DRIVEWAY PAVEMENT REMOVAL	[Hatched Box] BARRIER CURB REMOVAL
--- xxx --- STORM SEWER REMOVAL	[Wavy Line] COMBINATION CONCRETE CURB AND GUTTER REMOVAL	
[A] STRUCTURE TO BE ADJUSTED	[Hatched Box] BUILDING TO BE REMOVED (BY OTHERS)	
[R] STRUCTURE TO BE REMOVED		
[REC] STRUCTURE TO BE RECONSTRUCTED		

McDonough Associates Inc.
Engineers / Architects
130 East Randolph Street, Chicago, Illinois 60601

FILE NAME =	USER NAME = dssdd	DESIGNED - JWM	REVISED -
es:\pwork\p\dot\dssdd\0317613\0264750-sht-rem050.dgn		DRAWN - JPF	REVISED -
		CHECKED - RCH	REVISED -
		DATE - \$SUBDATE\$	REVISED -

**STATE OF ILLINOIS
DEPARTMENT OF TRANSPORTATION**

**EXISTING REMOVAL PLAN
WEST STATE STREET (US BUS 20)**

SCALE:	SHEET NO. 3 OF 18 SHEETS	STA. 250+50 TO STA. 256+50
--------	--------------------------	----------------------------

F.A.P. RTE.	SECTION	COUNTY	TOTAL SHEETS	SHEET NO.
303	41R	WINNEBAGO	327	50
				CONTRACT NO. 64750
FED. ROAD DIST. NODIST/ILLINOIS FED. AID PROJECT				