

**NOTE:**  
SEE SHEET EX-1 FOR REMOVAL NOTES.

**55100200 STORM SEWER REMOVAL 6"**

STA. 272+52.50 TO 272+79.51 - 40.0'  
TOTAL - 40.0'

**55100500 STORM SEWER REMOVAL - 12"**

STA. 272+80.55 TO 272+87.56 - 42.0'  
STA. 272+81.90 TO 273+19.40 - 38.0'  
STA. 273+39.94 TO 273+53.76 - 28.0'  
TOTAL - 108.0'

**55100900 STORM SEWER REMOVAL - 18"**

STA. 272+89.69 TO 272+97.33 - 152.0'  
TOTAL - 152.0'

**55101200 STORM SEWER REMOVAL - 24"**

STA. 273+19.40 TO 273+53.76 - 35.0'  
STA. 272+98.22 TO 273+19.40 - 35.0'  
STA. 273+53.76 TO 274+50.00 - 79.0'  
TOTAL - 149.0'

**60500060 REMOVING INLETS**

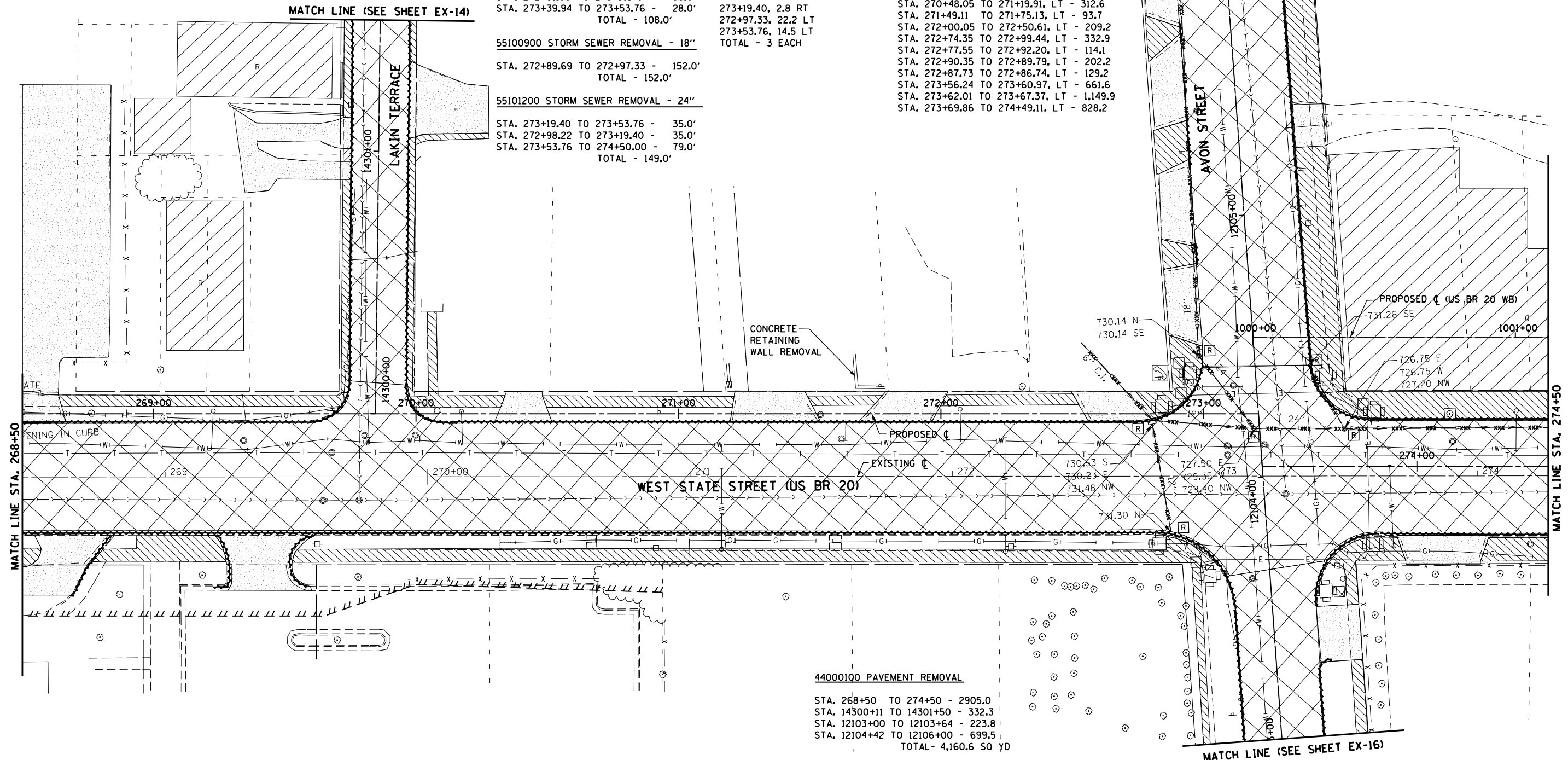
272+81.0, 2.5 RT  
272+87.7, 44.9 RT  
273+39.06, 27 LT  
TOTAL - 3 EACH

**60500040 REMOVING MANHOLES**

273+19.40, 2.8 RT  
272+97.33, 22.2 LT  
273+53.76, 14.5 LT  
TOTAL - 3 EACH

**44000600 SIDEWALK REMOVAL (SF)**

STA. 268+63.44 TO 269+71.61, LT - 460.0  
STA. 269+71.79 TO 269+72.73, LT - 241.9  
STA. 269+72.81 TO 269+72.86, LT - 14.4  
STA. 269+72.98 TO 269+73.36, LT - 111.5  
STA. 269+97.98 TO 269+98.32, LT - 44.9  
STA. 269+97.73 TO 269+97.62, LT - 342.9  
STA. 269+97.17 TO 270+62.22, LT - 261.5  
STA. 270+48.05 TO 271+19.91, LT - 312.6  
STA. 271+49.11 TO 271+75.13, LT - 93.7  
STA. 272+00.05 TO 272+50.61, LT - 209.2  
STA. 272+74.35 TO 272+99.44, LT - 332.9  
STA. 272+77.55 TO 272+92.20, LT - 114.1  
STA. 272+90.35 TO 272+89.79, LT - 202.2  
STA. 272+87.73 TO 272+86.74, LT - 129.2  
STA. 273+56.24 TO 273+60.97, LT - 661.6  
STA. 273+62.01 TO 273+67.37, LT - 1,149.9  
STA. 273+69.86 TO 274+49.11, LT - 828.2



**44000100 PAVEMENT REMOVAL**

STA. 268+50 TO 274+50 - 2905.0  
STA. 14300+11 TO 14301+50 - 332.3  
STA. 12103+00 TO 12103+64 - 223.8  
STA. 12104+42 TO 12106+00 - 699.5  
TOTAL - 4,160.6 SQ YD

**44000500 COMBINATION CURB AND GUTTER REMOVAL**

STA. 267+63.14 TO 273+41.02, RT - 528.6'  
STA. 268+67.76 TO 268+82.64, RT - 27.6'  
STA. 269+21.32 TO 269+23.33, RT - 26.9'  
STA. 269+57.95 TO 269+60.15, RT - 27.9'  
STA. 273+63.75 TO 273+66.71, RT - 32.1'  
STA. 273+60.70 TO 274+49.11, RT - 106.0'  
STA. 268+49.11 TO 269+74.65, LT - 271.5'  
STA. 269+96.87 TO 277+99.05, LT - 462.0'  
STA. 272+96.80 TO 272+96.24, LT - 8.8'  
STA. 272+94.11 TO 272+92.84, LT - 18.5'  
STA. 272+90.61 TO 272+90.36, LT - 5.5'  
STA. 273+20.97 TO 274+49.05, LT - 260.0'  
TOTAL - 1775.4'

**44000600 SIDEWALK REMOVAL**

STA. 268+49.11 TO 268+55.92, RT - 39.7  
STA. 268+77.58 TO 269+25.90, RT - 390.1  
STA. 269+52.34 TO 273+41.02, RT - 1,783.5  
STA. 273+41.02 TO 273+41.02, RT - 204.6  
STA. 273+78.17 TO 273+76.21, RT - 122.3  
STA. 273+67.29 TO 273+93.26, RT - 283.3  
STA. 274+24.87 TO 274+49.11, RT - 217.3  
TOTAL - 3040.8 SQ FT

**Z0075496 CONCRETE RETAINING WALL REMOVAL LF**

STA. 271+65.00 TO 271+78.00 - 23.0'  
TOTAL - 23.0 LF

**LEGEND**

- TEMPORARY CONSTRUCTION EASEMENT
- EXISTING R.O.W.
- PROPOSED R.O.W.
- xxx --- STORM SEWER REMOVAL
- [A] STRUCTURE TO BE ADJUSTED
- [R] STRUCTURE TO BE REMOVED
- [REC] STRUCTURE TO BE RECONSTRUCTED
- [Hatched Box] PAVEMENT REMOVAL
- [Diagonal Lines] SIDEWALK REMOVAL
- [Dotted Box] DRIVEWAY PAVEMENT REMOVAL
- [Wavy Line] COMBINATION CONCRETE CURB AND GUTTER REMOVAL
- [Diagonal Lines] BUILDING TO BE REMOVED (BY OTHERS)
- [Cross-hatched Box] CONCRETE REMOVAL
- [Stippled Box] BITUMINOUS REMOVAL
- [Dashed Line] BARRIER CURB REMOVAL

McDonough Associates Inc.  
Engineers / Architects  
130 East Randolph Street, Chicago, Illinois 60601

FILE NAME =	USER NAME =	DESIGNED -	REVISED -
es:\pw\work\p\d0317613\0264750-sht-rem053.dgn	dossdd	JWM	
PLOT SCALE = 40.0000' / in.		DRAWN -	REVISED -
		JPF	
PLOT DATE = Mon Dec 17 13:29:24 2012		CHECKED -	REVISED -
		RCH	
		DATE -	REVISED -
		\$SUBDATE\$	

STATE OF ILLINOIS  
DEPARTMENT OF TRANSPORTATION

EXISTING REMOVAL PLAN  
WEST STATE STREET (US BUS 20)

SCALE: SHEET NO. 6 OF 18 SHEETS STA. 268+50 TO STA. 274+50

F.A.P. RTE.	SECTION	COUNTY	TOTAL SHEETS	SHEET NO.
303	41R	WINNEBAGO	327	53
FED. ROAD DIST. NO. 2 ILLINOIS FED. AID PROJECT			CONTRACT NO. 64750	