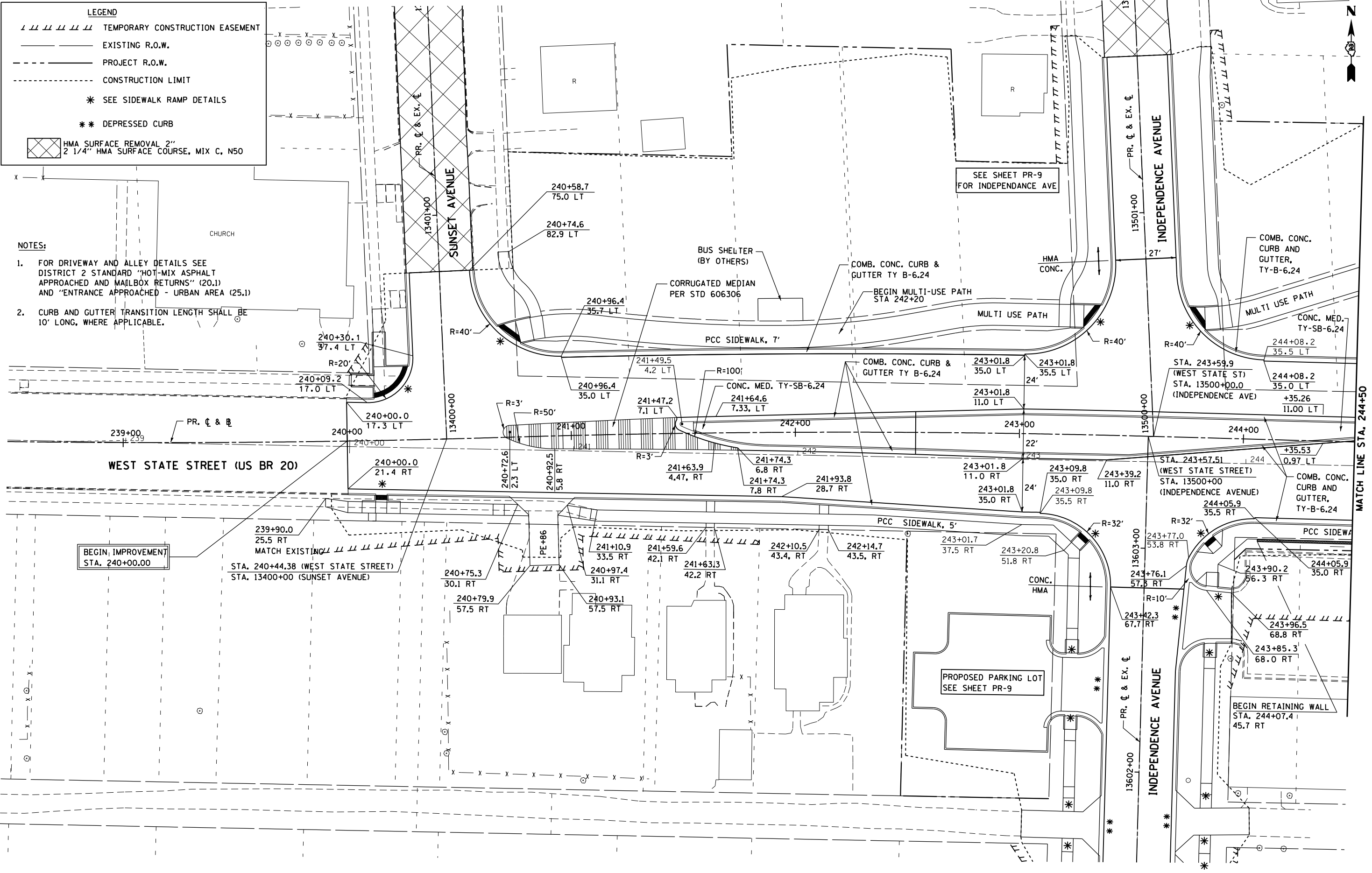


LEGEND

- TEMPORARY CONSTRUCTION EASEMENT
- EXISTING R.O.W.
- PROJECT R.O.W.
- CONSTRUCTION LIMIT
- * SEE SIDEWALK RAMP DETAILS
- ** DEPRESSED CURB
- HMA SURFACE REMOVAL 2" / 2 1/4" HMA SURFACE COURSE, MIX C, N50

- NOTES:**
- FOR DRIVEWAY AND ALLEY DETAILS SEE DISTRICT 2 STANDARD "HOT-MIX ASPHALT APPROACHED AND MAILBOX RETURNS" (20.1) AND "ENTRANCE APPROACHED - URBAN AREA (25.1)"
 - CURB AND GUTTER TRANSITION LENGTH SHALL BE 10' LONG, WHERE APPLICABLE.



FILE NAME =	USER NAME = dosddd	DESIGNED - JWM	REVISED -
et:\pw\work\p\dot\dosddd\0317614\026478	0-shr-pln066.dgn	DRAWN - JPF	REVISED -
	PLOT SCALE = 48.0000' / in.	CHECKED - RCH	REVISED -
	PLOT DATE = Mon Dec 17 13:37:53 2012	DATE - \$SUBDATE\$	REVISED -

**STATE OF ILLINOIS
DEPARTMENT OF TRANSPORTATION**

**PROPOSED PLAN
WEST STATE ST (US BUS 20)**

SCALE: SHEET NO. 1 OF 23 SHEETS STA. TO STA.

F.A.P. RTE.	SECTION	COUNTY	TOTAL SHEETS	SHEET NO.
303	41R	WINNEBAGO	327	66
FED. ROAD DIST. NO. 2 ILLINOIS FED. AID PROJECT			CONTRACT NO. 64750	