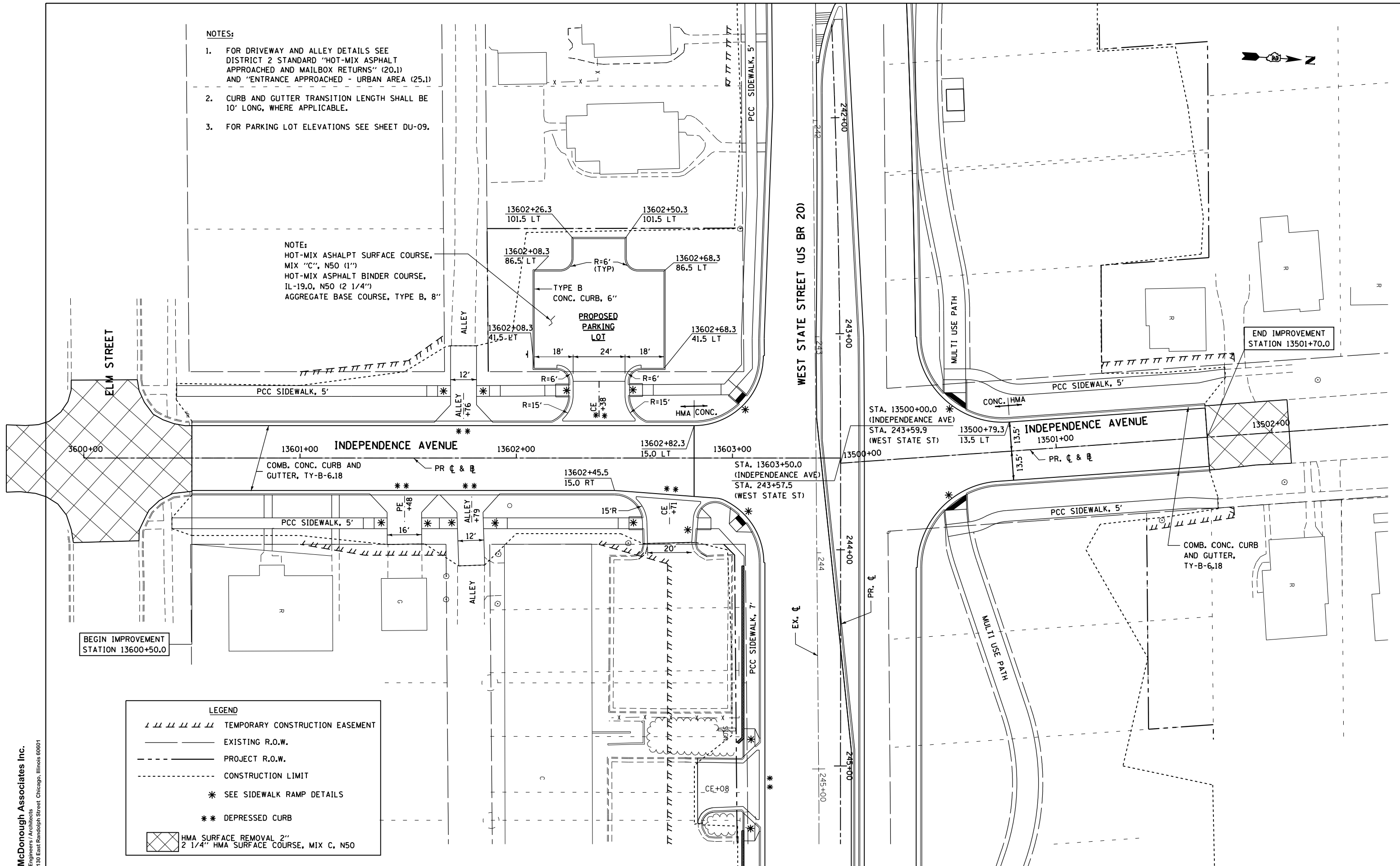


NOTES:

1. FOR DRIVEWAY AND ALLEY DETAILS SEE DISTRICT 2 STANDARD "HOT-MIX ASPHALT APPROACHED AND MAILBOX RETURNS" (20.1) AND "ENTRANCE APPROACHED - URBAN AREA (25.1)
2. CURB AND GUTTER TRANSITION LENGTH SHALL BE 10' LONG, WHERE APPLICABLE.
3. FOR PARKING LOT ELEVATIONS SEE SHEET DU-09.

NOTE:
HOT-MIX ASPHALT SURFACE COURSE,
MIX "C", N50 (1")
HOT-MIX ASPHALT BINDER COURSE,
IL-19.0, N50 (2 1/4")
AGGREGATE BASE COURSE, TYPE B, 8"



LEGEND	
	TEMPORARY CONSTRUCTION EASEMENT
	EXISTING R.O.W.
	PROJECT R.O.W.
	CONSTRUCTION LIMIT
	SEE SIDEWALK RAMP DETAILS
	DEPRESSED CURB
	HMA SURFACE REMOVAL 2" 2 1/4" HMA SURFACE COURSE, MIX C, N50

McDonough Associates Inc.
Engineers / Architects
130 East Randolph Street, Chicago, Illinois 60601

FILE NAME =	USER NAME = dssdd	DESIGNED - JWM	REVISED -
et:\pwork\pwork\dot\dssdd\0317614\0264750-shr-pln074.dgn		DRAWN - JPF	REVISED -
		CHECKED - RCH	REVISED -
		DATE - \$SUBDATE\$	REVISED -

**STATE OF ILLINOIS
DEPARTMENT OF TRANSPORTATION**

**PROPOSED PLAN
INDEPENDENCE AVENUE**

SCALE: SHEET NO. 9 OF 23 SHEETS STA. TO STA.

F.A.P. RTE.	SECTION	COUNTY	TOTAL SHEETS	SHEET NO.
303	41R	WINNEBAGO	327	74
FED. ROAD DIST. NO. 2 ILLINOIS FED. AID PROJECT			CONTRACT NO. 64750	