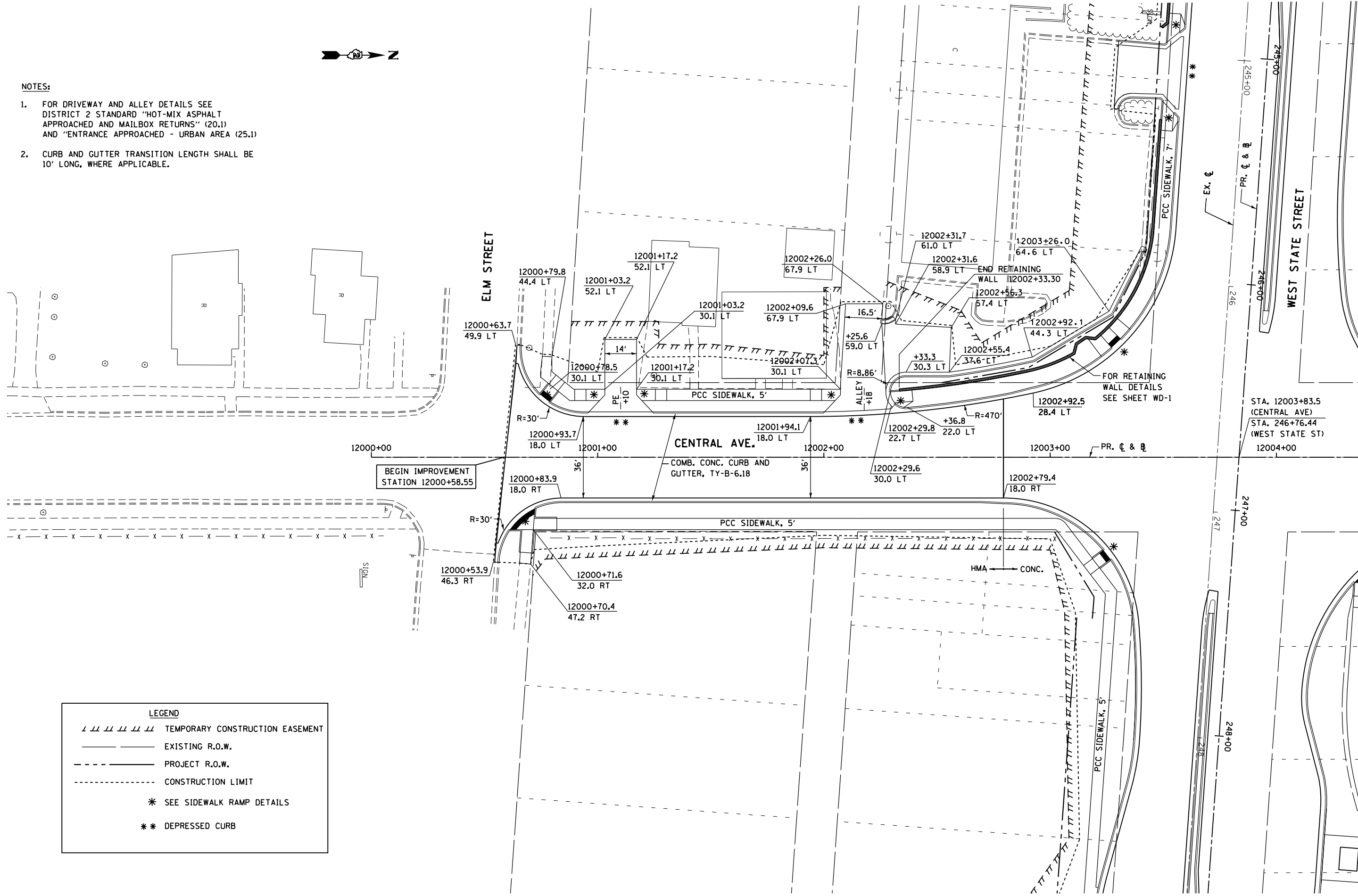


NOTES:

- FOR DRIVEWAY AND ALLEY DETAILS SEE DISTRICT 2 STANDARD "HOT-MIX ASPHALT APPROACHED AND MAILBOX RETURNS" (20.1) AND "ENTRANCE APPROACHED - URBAN AREA (25.1)"
- CURB AND GUTTER TRANSITION LENGTH SHALL BE 10' LONG, WHERE APPLICABLE.



LEGEND	
	TEMPORARY CONSTRUCTION EASEMENT
	EXISTING R.O.W.
	PROJECT R.O.W.
	CONSTRUCTION LIMIT
	SEE SIDEWALK RAMP DETAILS
	DEPRESSED CURB

McDonough Associates Inc.
 Engineers / Architects
 130 East Randolph Street, Chicago, Illinois 60601

FILE NAME =	USER NAME =	DESIGNED -	REVISED -
ei:\pw\work\p\dot\d\ossdd\0317614\0264750-sht-pln075.dgn	dossdd	JPF	JPF
PLOT SCALE = 40.0000' / in.	CHECKED -	RCH	RCH
PLOT DATE = Mon Dec 17 13:43:38 2012	DATE -	\$SUBDATE\$	\$SUBDATE\$

**STATE OF ILLINOIS
DEPARTMENT OF TRANSPORTATION**

**PROPOSED PLAN
CENTRAL AVENUE**

SCALE: SHEET NO. 10 OF 23 SHEETS STA. TO STA.

F.A.P. RTE.	SECTION	COUNTY	TOTAL SHEETS	SHEET NO.
303	41R	WINNEBAGO	327	75
FED. ROAD DIST. NO. 2 ILLINOIS FED. AID PROJECT			CONTRACT NO. 64750	

FOR CONTINUATION SEE SHEET PR-11