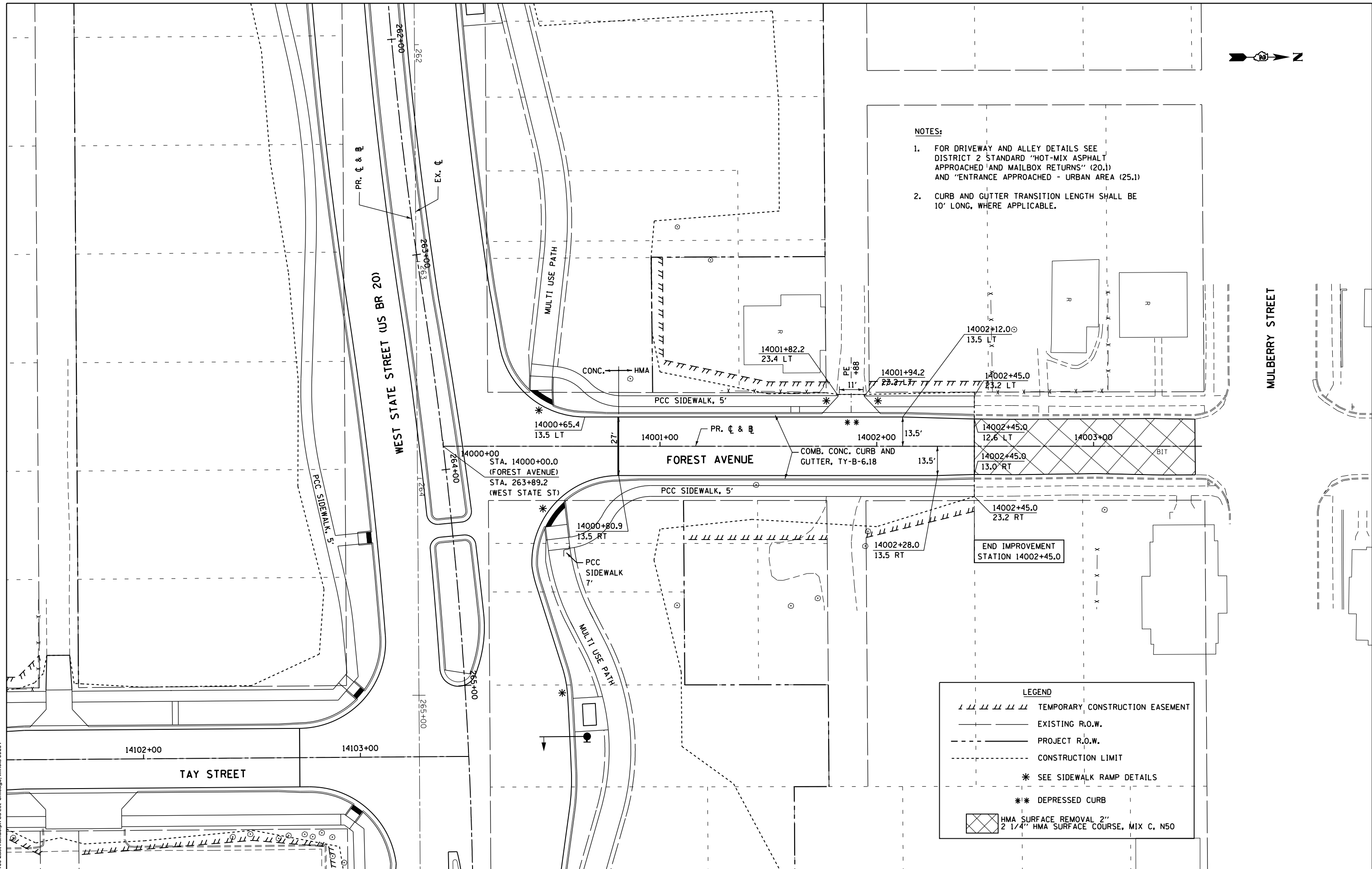




- NOTES:**
- FOR DRIVEWAY AND ALLEY DETAILS SEE DISTRICT 2 STANDARD "HOT-MIX ASPHALT APPROACHED AND MAILBOX RETURNS" (20.1) AND "ENTRANCE APPROACHED - URBAN AREA (25.1)
  - CURB AND GUTTER TRANSITION LENGTH SHALL BE 10' LONG, WHERE APPLICABLE.



**LEGEND**

- /// TEMPORARY CONSTRUCTION EASEMENT
- EXISTING R.O.W.
- - - PROJECT R.O.W.
- - - CONSTRUCTION LIMIT
- \* SEE SIDEWALK RAMP DETAILS
- \*\* DEPRESSED CURB
- ▨ HMA SURFACE REMOVAL 2"
- ▨ 2 1/4" HMA SURFACE COURSE, MIX C, N50

**McDonough Associates Inc.**  
 Engineers / Architects  
 130 East Randolph Street, Chicago, Illinois 60601

FILE NAME =	USER NAME = dosddd	DESIGNED - JWM	REVISED -
et:\pw\work\p\dot\dosddd\0317614\026479\0-shr-pln079.dgn		DRAWN - JPF	REVISED -
		CHECKED - RCH	REVISED -
		DATE - \$SUBDATE\$	REVISED -

**STATE OF ILLINOIS**  
**DEPARTMENT OF TRANSPORTATION**

**PROPOSED PLAN**  
**FOREST AVENUE**

SCALE:      SHEET NO. 14 OF 23 SHEETS      STA.      TO STA.

F.A.P. RTE.	SECTION	COUNTY	TOTAL SHEETS	SHEET NO.
303	41R	WINNEBAGO	327	79
FED. ROAD DIST. NO. 2 ILLINOIS FED. AID PROJECT			CONTRACT NO. 64750	