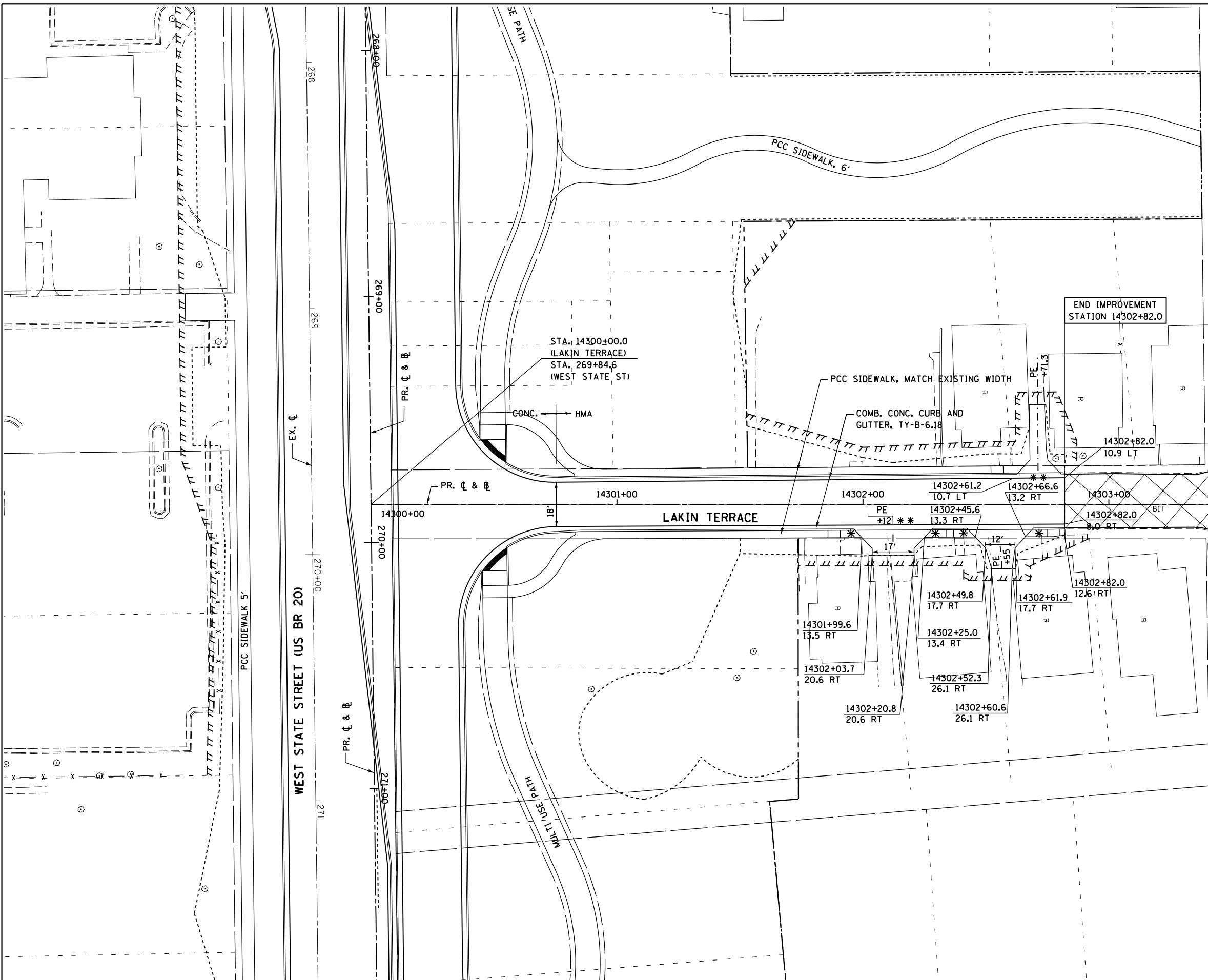




| LEGEND | |
|--------|---|
| | TEMPORARY CONSTRUCTION EASEMENT |
| | EXISTING R.O.W. |
| | PROJECT R.O.W. |
| | CONSTRUCTION LIMIT |
| | * SEE SIDEWALK RAMP DETAILS |
| | ** DEPRESSED CURB |
| | HMA SURFACE REMOVAL 2" 2 1/4" HMA SURFACE COURSE, MIX C, N50 |



- NOTES:
- FOR DRIVEWAY AND ALLEY DETAILS SEE DISTRICT 2 STANDARD "HOT-MIX ASPHALT APPROACHED AND MAILBOX RETURNS" (20.1) AND "ENTRANCE APPROACHED - URBAN AREA (25.1)
 - CURB AND GUTTER TRANSITION LENGTH SHALL BE 10' LONG, WHERE APPLICABLE.

McDonough Associates Inc.
Engineers / Architects
130 East Randolph Street, Chicago, Illinois 60601

| | | | |
|---|--------------------|--------------------|-----------|
| FILE NAME = | USER NAME = dosddd | DESIGNED - JWM | REVISED - |
| ei:\pw\work\p\dot\dosddd\0317614\0264750-sht-pln082.dgn | | DRAWN - JPF | REVISED - |
| PLOT SCALE = 48.0000' / in. | | CHECKED - RCH | REVISED - |
| PLOT DATE = Mon Dec 17 13:51:21 2012 | | DATE - \$SUBDATE\$ | REVISED - |

STATE OF ILLINOIS
DEPARTMENT OF TRANSPORTATION

PROPOSED PLAN
LAKIN TERRACE

SCALE: SHEET NO. 17 OF 23 SHEETS STA. TO STA.

| F.A.P. RTE. | SECTION | COUNTY | TOTAL SHEETS | SHEET NO. |
|---|---------|-----------|--------------|--------------------|
| 303 | 41R | WINNEBAGO | 327 | 82 |
| FED. ROAD DIST. NO. 2 ILLINOIS FED. AID PROJECT | | | | CONTRACT NO. 64750 |