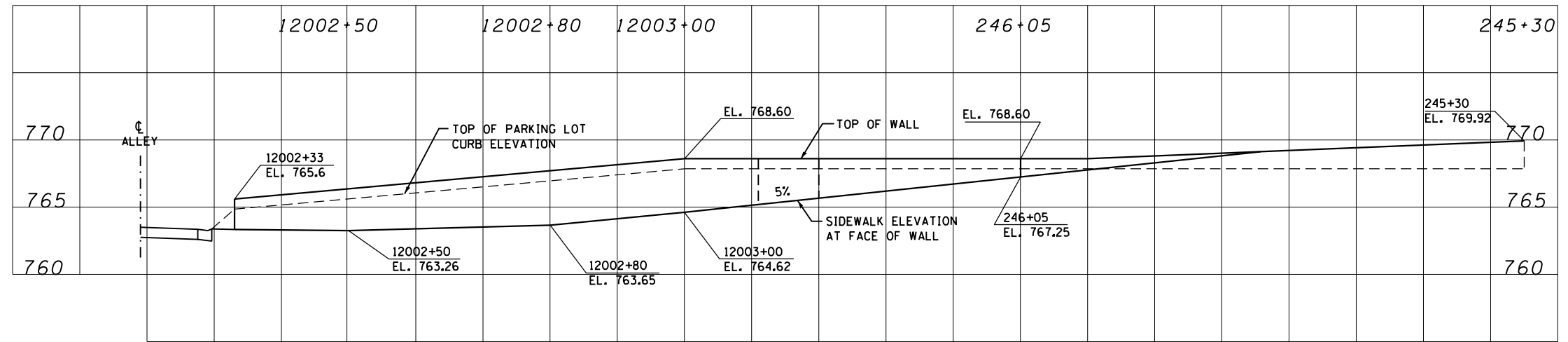
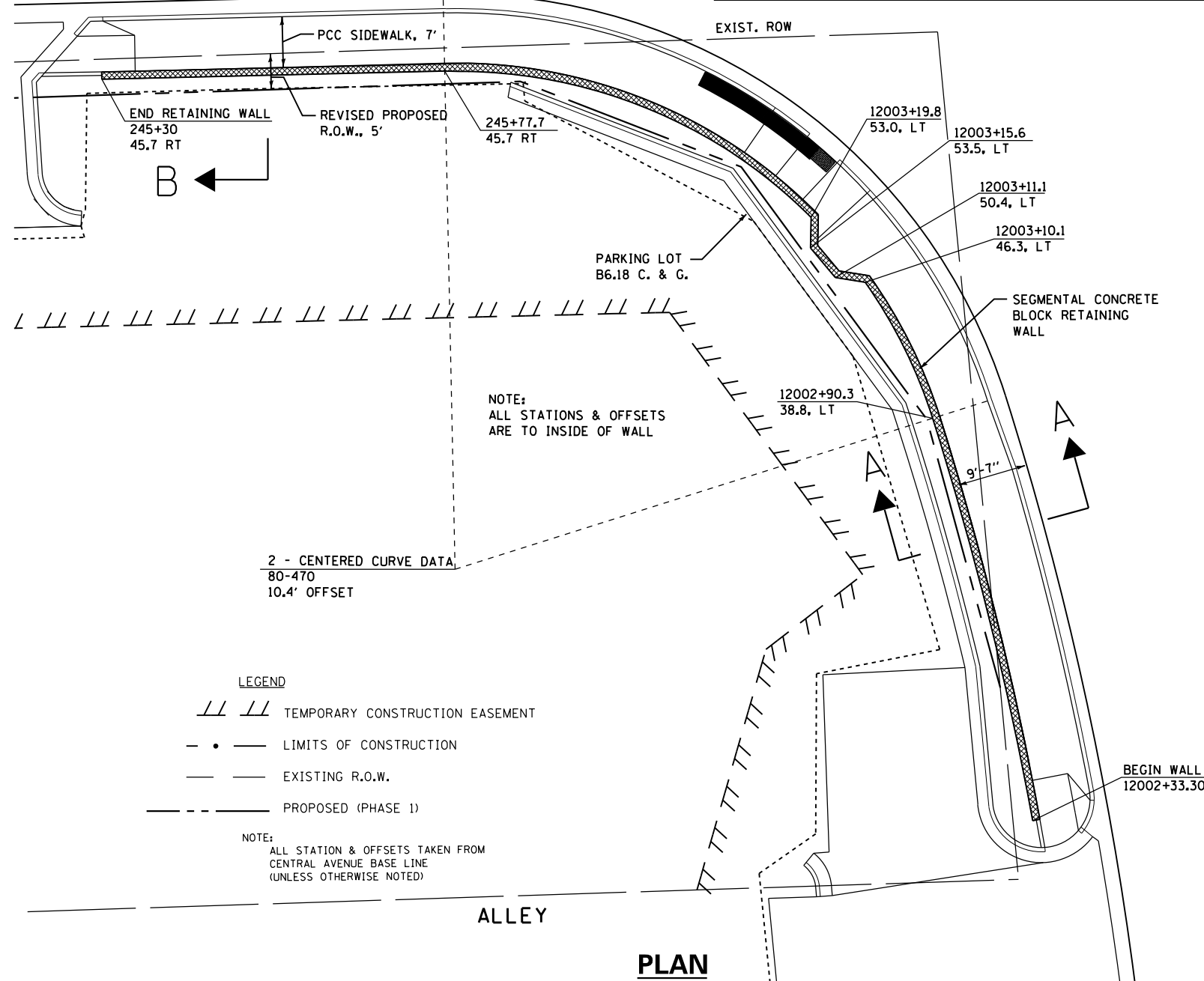




U.S. BUS 20  
(WEST STATE STREET)



**SEGMENTAL BLOCK WALL ELEVATION**

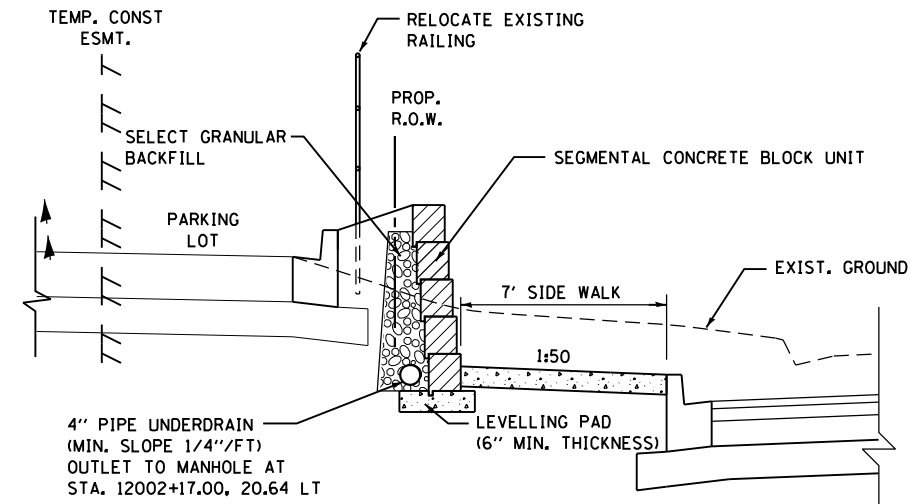


**PLAN**

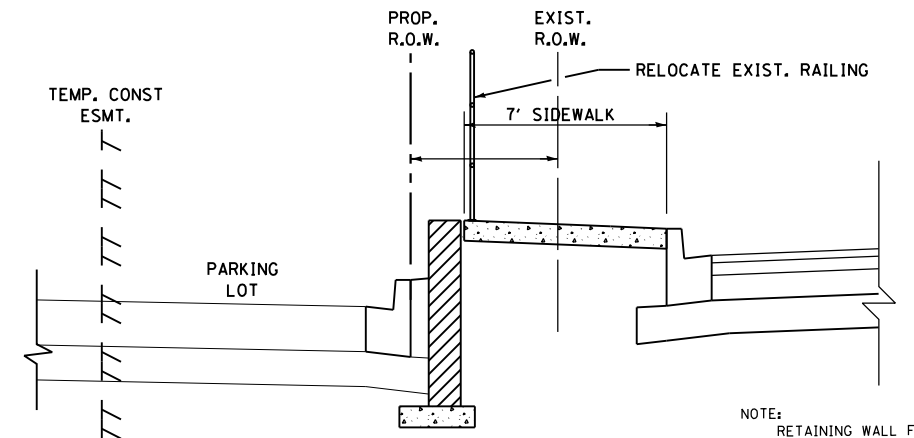
**LEGEND**

- /// TEMPORARY CONSTRUCTION EASEMENT
- . - LIMITS OF CONSTRUCTION
- - - EXISTING R.O.W.
- - - PROPOSED (PHASE 1)

NOTE:  
ALL STATION & OFFSETS TAKEN FROM  
CENTRAL AVENUE BASE LINE  
(UNLESS OTHERWISE NOTED)



**WALL SECTION A-A**



**WALL SECTION B-B**

NOTE:  
RETAINING WALL FROM STATION 244+07.7 TO 245+69.3  
SHALL USE SAME RETAINING WALL DETAIL

RELOCATING THE EXISTING RAILING SHALL BE INCIDENTAL TO  
THE COST OF SEGMENTAL CONCRETE BLOCK WALL

McDonough Associates Inc.  
 Engineers / Architects  
 130 East Randolph Street, Chicago, Illinois 60601

FILE NAME =	USER NAME = dssdd	DESIGNED - JWM	REVISED -
es:\pwork\pwork\dot\dssdd\dms67949\0264750-sh-t-wd-(pg89).dgn		DRAWN - JPW	REVISED -
	PLOT SCALE = 20.0000' / in.	CHECKED - RCH	REVISED -
	PLOT DATE = Mon Dec 17 13:55:55 2012	DATE - \$SUBDATE\$	REVISED -

**STATE OF ILLINOIS  
DEPARTMENT OF TRANSPORTATION**

**RETAINING WALL DETAILS  
CENTRAL AVENUE AT US BUS 20**

SCALE: SHEET NO. 1 OF 1 SHEETS STA. TO STA.

F.A.P. RTE.	SECTION	COUNTY	TOTAL SHEETS	SHEET NO.
303	41R	WINNEBAGO	327	89
FED. ROAD DIST. NO. 2 ILLINOIS FED. AID PROJECT			CONTRACT NO. 64750	